

Data Path : Z:\voasrv\HPCHEM1\MSVOA_W\Data\VW022422\
 Data File : VW022143.D
 Acq On : 24 Feb 2022 18:21
 Operator : SY/VA
 Sample : N1631-17
 Misc : 5.75g/10mL/MSVOA_W/SOIL
 ALS Vial : 1 Sample Multiplier: 1

Instrument :
 MSVOA_W
 ClientSampleId :
 DBRL7

Integration Parameters: LSCINT.P

Integrator: RTE
 Smoothing : OFF
 Sampling : 1
 Start Thrs : 0.2
 Stop Thrs : 0

Filtering: 5
 Min Area: 0 % of largest Peak
 Max Peaks: 100
 Peak Location: TOP

If leading or trailing edge < 100 prefer < Baseline drop else tangent >
 Peak separation: 5

Method : Z:\voasrv\HPCHEM1\MSVOA_W\Method\SFAMWLM022322SMA.M
 Title : SFAM01.0

Signal : TIC: VW022143.D\data.ms

peak #	R.T. min	first scan	max scan	last scan	PK TY	peak height	corr. area	corr. % max.	% of total
1	2.105	30	33	35	rVB2	388	370	0.08%	0.011%
2	2.154	37	41	44	rBV2	868	1103	0.24%	0.032%
3	2.349	67	73	81	rVB	33863	57218	12.66%	1.639%
4	2.654	118	123	132	rBV	3407	9785	2.16%	0.280%
5	2.885	154	161	168	rBV	24180	49177	10.88%	1.408%
6	3.544	267	269	273	rBV2	481	374	0.08%	0.011%
7	3.641	281	285	288	rBV2	348	458	0.10%	0.013%
8	3.873	320	323	325	rBV2	436	512	0.11%	0.015%
9	4.013	334	346	360	rBV	44903	129309	28.61%	3.703%
10	4.220	379	380	382	rVV2	369	310	0.07%	0.009%
11	4.263	383	387	390	rVV3	440	776	0.17%	0.022%
12	4.318	393	396	398	rBV2	391	348	0.08%	0.010%
13	4.391	405	408	410	rVV2	245	393	0.09%	0.011%
14	4.409	410	411	413	rVV2	358	300	0.07%	0.009%
15	4.501	424	426	430	rBV2	341	406	0.09%	0.012%
16	4.605	439	443	444	rBV3	411	527	0.12%	0.015%
17	4.800	472	475	480	rBV2	362	645	0.14%	0.018%
18	4.915	484	494	503	rBV4	2552	7857	1.74%	0.225%
19	5.153	531	533	534	rBV	380	296	0.07%	0.008%
20	5.226	542	545	546	rBV2	313	285	0.06%	0.008%
21	5.245	546	548	549	rBV	540	330	0.07%	0.009%
22	5.434	574	579	582	rBV	191	425	0.09%	0.012%
23	5.470	582	585	587	rBV	271	288	0.06%	0.008%
24	5.556	598	599	603	rVB	286	354	0.08%	0.010%
25	5.641	612	613	617	rVB2	352	349	0.08%	0.010%
26	5.671	617	618	620	rBV2	334	280	0.06%	0.008%
27	5.696	620	622	626	rVV	349	341	0.08%	0.010%
28	5.940	655	662	670	rVB6	870	2627	0.58%	0.075%
29	6.025	673	676	678	rBV	294	280	0.06%	0.008%
30	6.202	703	705	709	rVV3	509	677	0.15%	0.019%
31	6.720	788	790	793	rVB2	453	373	0.08%	0.011%
32	6.769	797	798	801	rBV2	269	294	0.07%	0.008%
33	6.793	801	802	805	rVB2	413	286	0.06%	0.008%
34	6.903	818	820	823	rBV	288	284	0.06%	0.008%
35	6.939	823	826	828	rVB	227	280	0.06%	0.008%
36	7.080	836	849	866	rBV	15810	45685	10.11%	1.308%

Data Path : Z:\voasrv\HPCHEM1\MSVOA_W\Data\VW022422\
 Data File : VW022143.D
 Acq On : 24 Feb 2022 18:21
 Operator : SY/VA
 Sample : N1631-17
 Misc : 5.75g/10mL/MSVOA_W/SOIL
 ALS Vial : 1 Sample Multiplier: 1

Instrument :
 MSVOA_W
 ClientSampleId :
 DBRL7

Integration Parameters: LSCINT.P

Integrator: RTE
 Smoothing : OFF
 Sampling : 1
 Start Thrs : 0.2
 Stop Thrs : 0

Filtering: 5
 Min Area: 0 % of largest Peak
 Max Peaks: 100
 Peak Location: TOP

If leading or trailing edge < 100 prefer < Baseline drop else tangent >
 Peak separation: 5

Method : Z:\voasrv\HPCHEM1\MSVOA_W\Method\SFAMWLM022322SMA.M
 Title : SFAM01.0

37	7.354	893	894	897	rVV	406	460	0.10%	0.013%
38	7.433	903	907	909	rBV	528	532	0.12%	0.015%
39	7.647	932	942	953	rVV	70490	174179	38.54%	4.988%
40	7.744	955	958	961	rBV	340	410	0.09%	0.012%
41	7.775	961	963	966	rVB	309	281	0.06%	0.008%
42	7.817	966	970	972	rBV2	328	388	0.09%	0.011%
43	7.884	977	981	984	rBV	755	747	0.17%	0.021%
44	7.958	986	993	996	rVB4	584	1312	0.29%	0.038%
45	8.025	1002	1004	1009	rVB2	343	405	0.09%	0.012%
46	8.067	1009	1011	1016	rVB3	394	468	0.10%	0.013%
47	8.275	1033	1045	1059	rBV2	127091	394446	87.27%	11.297%
48	8.409	1064	1067	1069	rBV3	418	386	0.09%	0.011%
49	8.707	1114	1116	1118	rVB2	438	370	0.08%	0.011%
50	8.762	1121	1125	1126	rBV2	408	322	0.07%	0.009%
51	8.842	1128	1138	1146	rBV	168365	333250	73.73%	9.544%
52	8.921	1149	1151	1154	rVB	401	464	0.10%	0.013%
53	8.951	1154	1156	1159	rBV3	250	345	0.08%	0.010%
54	9.043	1168	1171	1172	rBV	325	345	0.08%	0.010%
55	9.079	1172	1177	1182	rVV7	1236	2374	0.53%	0.068%
56	9.274	1200	1209	1218	rBV	91388	187299	41.44%	5.364%
57	9.341	1218	1220	1226	rVB4	769	1137	0.25%	0.033%
58	9.415	1231	1232	1237	rBV4	342	452	0.10%	0.013%
59	9.659	1267	1272	1279	rVV5	1405	2859	0.63%	0.082%
60	9.768	1289	1290	1295	rVB2	383	281	0.06%	0.008%
61	9.896	1308	1311	1313	rVB3	281	331	0.07%	0.009%
62	10.036	1325	1334	1345	rBV	47339	86870	19.22%	2.488%
63	10.171	1353	1356	1357	rBV	358	306	0.07%	0.009%
64	10.219	1363	1364	1368	rVB2	395	339	0.08%	0.010%
65	10.323	1372	1381	1388	rBV	195849	346114	76.58%	9.913%
66	10.390	1388	1392	1396	rVB2	3513	5672	1.25%	0.162%
67	10.463	1402	1404	1407	rBV4	250	352	0.08%	0.010%
68	10.579	1416	1423	1431	rBV	30296	54883	12.14%	1.572%
69	10.634	1431	1432	1436	rVB3	618	711	0.16%	0.020%
70	10.707	1437	1444	1449	rBV3	3987	8451	1.87%	0.242%
71	10.768	1452	1454	1456	rBV	641	576	0.13%	0.016%
72	10.823	1458	1463	1470	rVB3	1901	3537	0.78%	0.101%
73	10.920	1472	1479	1488	rBV	61708	108503	24.01%	3.108%
74	11.006	1490	1493	1499	rVB6	1649	3330	0.74%	0.095%
75	11.061	1499	1502	1504	rBV2	1671	2178	0.48%	0.062%
76	11.146	1515	1516	1517	rBV	572	280	0.06%	0.008%

Data Path : Z:\voasrv\HPCHEM1\MSVOA_W\Data\VW022422\
 Data File : VW022143.D
 Acq On : 24 Feb 2022 18:21
 Operator : SY/VA
 Sample : N1631-17
 Misc : 5.75g/10mL/MSVOA_W/SOIL
 ALS Vial : 1 Sample Multiplier: 1

Instrument :
 MSVOA_W
 ClientSampleId :
 DBRL7

Integration Parameters: LSCINT.P

Integrator: RTE
 Smoothing : OFF Filtering: 5
 Sampling : 1 Min Area: 0 % of largest Peak
 Start Thrs: 0.2 Max Peaks: 100
 Stop Thrs : 0 Peak Location: TOP

If leading or trailing edge < 100 prefer < Baseline drop else tangent >
 Peak separation: 5

Method : Z:\voasrv\HPCHEM1\MSVOA_W\Method\SFAMWLM022322SMA.M
 Title : SFAM01.0

77	11.207	1524	1526	1527	rBV2	330	289	0.06%	0.008%
78	11.256	1532	1534	1536	rBV2	563	548	0.12%	0.016%
79	11.280	1536	1538	1541	rVB4	483	435	0.10%	0.012%
80	11.311	1541	1543	1544	rBV2	403	364	0.08%	0.010%
81	11.329	1544	1546	1549	rBV3	404	444	0.10%	0.013%
82	11.378	1551	1554	1557	rBV5	1002	1496	0.33%	0.043%
83	11.634	1588	1596	1603	rBV	238711	416539	92.16%	11.930%
84	11.713	1607	1609	1610	rBV2	600	418	0.09%	0.012%
85	11.835	1625	1629	1634	rVB4	1256	2439	0.54%	0.070%
86	12.012	1655	1658	1661	rBV4	1279	1366	0.30%	0.039%
87	12.085	1668	1670	1671	rVB2	833	453	0.10%	0.013%
88	12.170	1679	1684	1689	rBV7	1417	3335	0.74%	0.096%
89	12.231	1693	1694	1696	rBV2	507	405	0.09%	0.012%
90	12.560	1744	1748	1749	rBV4	1101	1412	0.31%	0.040%
91	12.609	1749	1756	1762	rVV5	10175	24399	5.40%	0.699%
92	12.688	1763	1769	1777	rVV	101362	170750	37.78%	4.890%
93	12.774	1781	1783	1784	rBV2	930	834	0.18%	0.024%
94	13.188	1849	1851	1854	rVB4	1575	1648	0.36%	0.047%
95	13.554	1905	1911	1918	rBV	282211	451985	100.00%	12.945%
96	13.853	1952	1960	1967	rBV	204763	352670	78.03%	10.100%
97	14.066	1991	1995	2005	rVB2	9000	16680	3.69%	0.478%
98	16.096	2327	2328	2330	rBV2	1369	882	0.20%	0.025%
99	16.602	2409	2411	2413	rBV3	1115	887	0.20%	0.025%
100	16.627	2413	2415	2418	rVB4	1129	1407	0.31%	0.040%

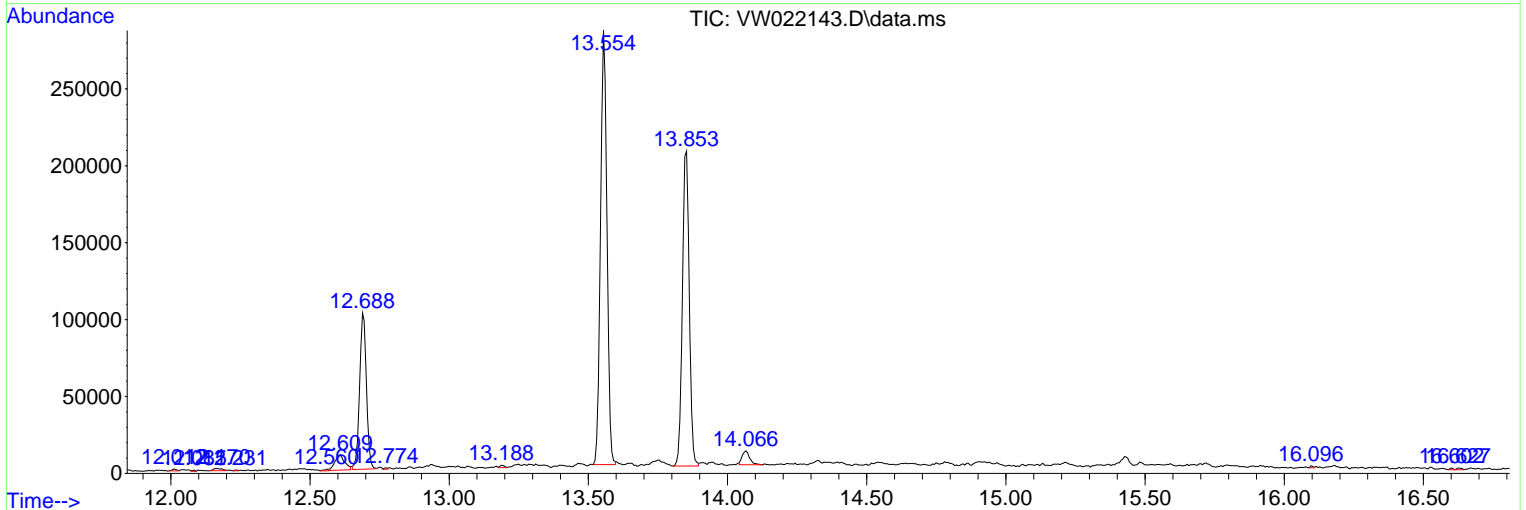
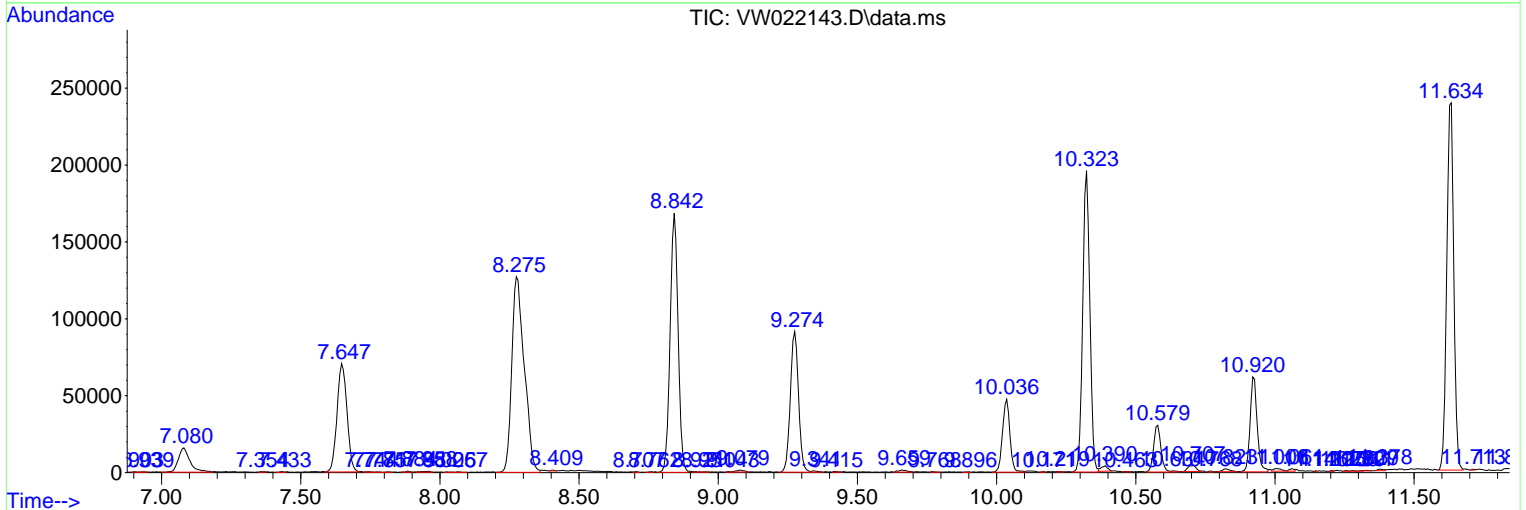
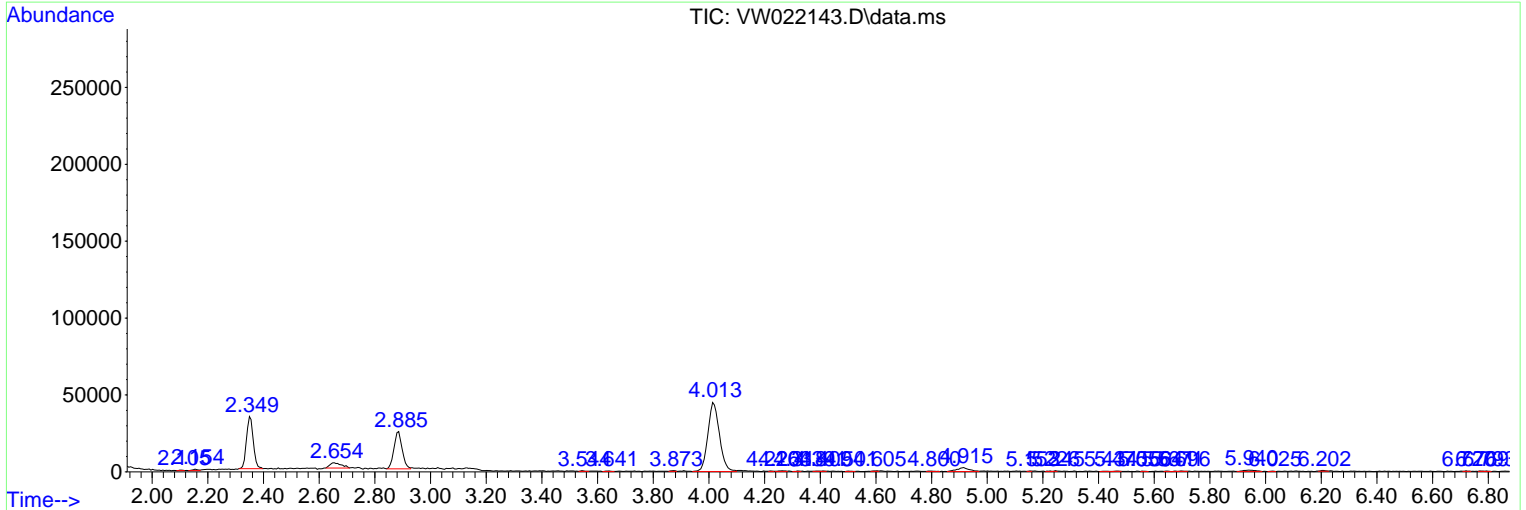
Sum of corrected areas: 3491632

Data Path : Z:\voasrv\HPCHEM1\MSVOA_W\Data\VW022422\
 Data File : VW022143.D
 Acq On : 24 Feb 2022 18:21
 Operator : SY/VA
 Sample : N1631-17
 Misc : 5.75g/10mL/MSVOA_W/SOIL
 ALS Vial : 1 Sample Multiplier: 1

Instrument :
 MSVOA_W
ClientSampleId :
 DBRL7

Quant Method : Z:\voasrv\HPCHEM1\MSVOA_W\Method\SFAMWLM022322SMA.M
 Quant Title : SFAM01.0

TIC Library : C:\Database\NIST20.L
 TIC Integration Parameters: LSCINT.P



Library Search Compound Report

Data Path : Z:\voasrv\HPCHEM1\MSVOA_W\Data\VW022422\
Data File : VW022143.D
Acq On : 24 Feb 2022 18:21
Operator : SY/VA
Sample : N1631-17
Misc : 5.75g/10mL/MSVOA_W/SOIL
ALS Vial : 1 Sample Multiplier: 1

Instrument :
MSVOA_W
ClientSampleId :
DBRL7

Quant Method : Z:\voasrv\HPCHEM1\MSVOA_W\Method\SFAMWLM022322SMA.M
Quant Title : SFAM01.0

TIC Library : C:\Database\NIST0.L
TIC Integration Parameters: LSCINT.P

No Library Search Compounds Detected

Data Path : Z:\voasrv\HPCHEM1\MSVOA_W\Data\VW022422\
Data File : VW022143.D
Acq On : 24 Feb 2022 18:21
Operator : SY/VA
Sample : N1631-17
Misc : 5.75g/10mL/MSVOA_W/SOIL
ALS Vial : 1 Sample Multiplier: 1

Instrument :
MSVOA_W
ClientSampleId :
DBRL7

Quant Method : Z:\voasrv\HPCHEM1\MSVOA_W\Method\SFAMWLM022322SMA.M
Quant Title : SFAM01.0

TIC Library : C:\Database\NIST0.L
TIC Integration Parameters: LSCINT.P

TIC Top Hit name	RT	EstConc	Units	Response	--Internal Standard--		
					#	RT	Resp Conc
