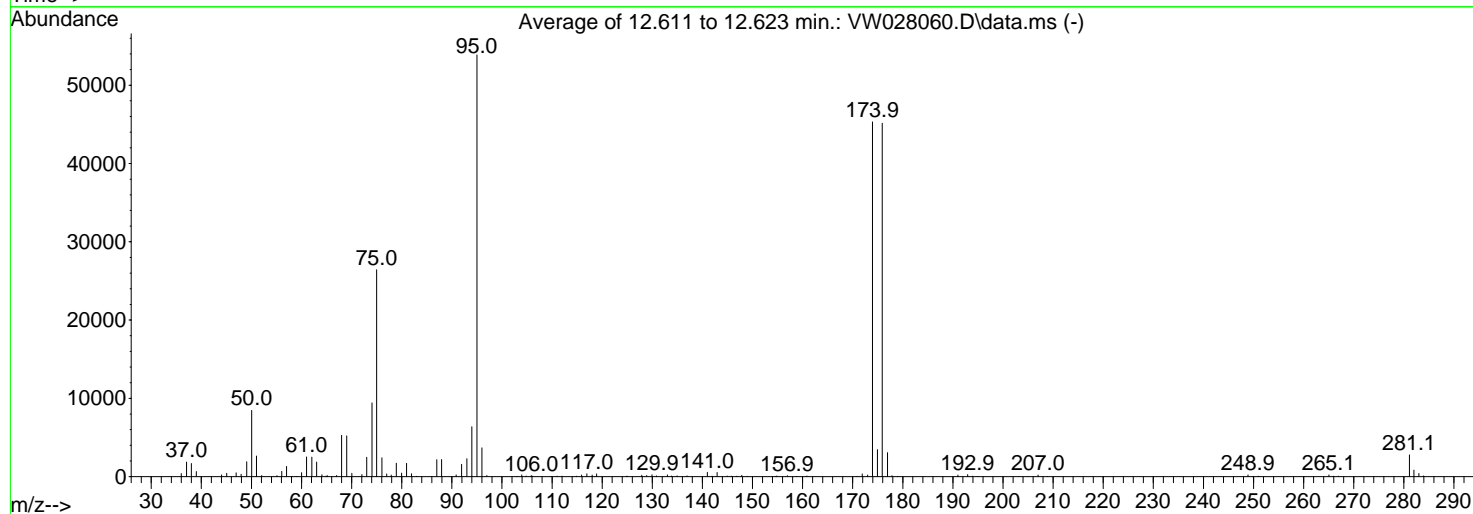
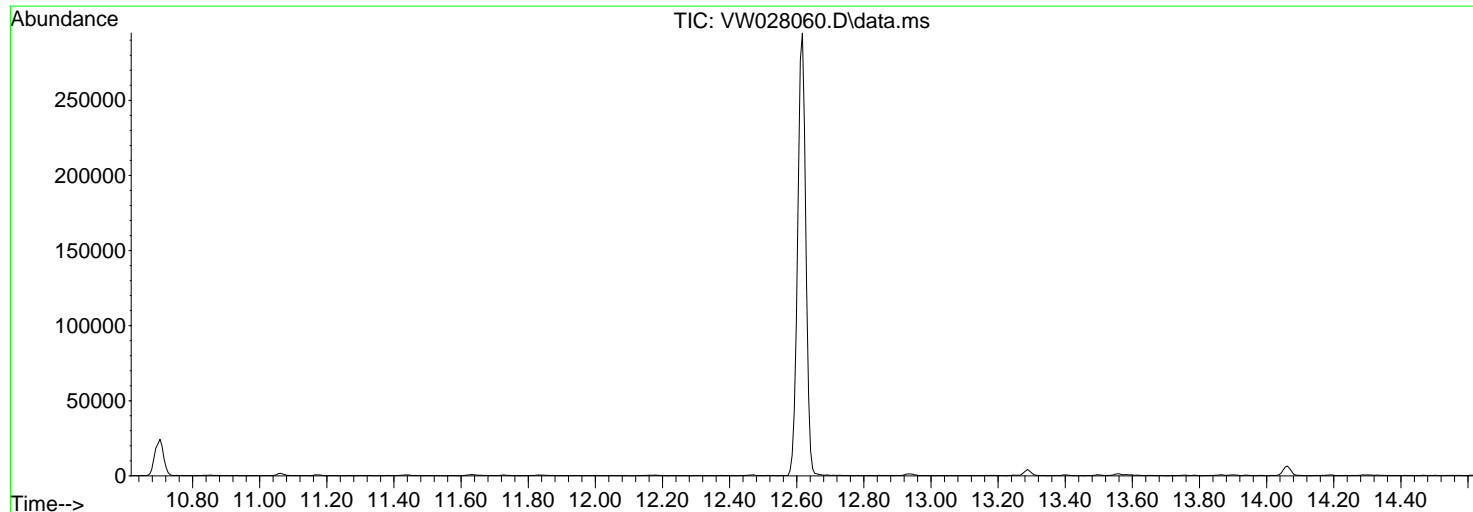


Data Path : Z:\voasrv\HPCHEM1\MSVOA_W\Data\VW022624\
 Data File : VW028060.D
 Acq On : 26 Feb 2024 09:41
 Operator : SY/MD
 Sample : BFB442
 Misc : 5.00g/10mL/MSVOA_W/SOIL
 ALS Vial : 1 Sample Multiplier: 1

Instrument :
 MSVOA_W
 ClientSampleId :
 BFB442

Integration File: LSCINT.P

Method : Z:\voasrv\HPCHEM1\MSVOA_W\Method\SFAMWLM020524SMA.M
 Title : SFAM01.0
 Last Update : Tue Feb 27 01:31:10 2024



AutoFind: Scans 1759, 1760, 1761; Background Corrected with Scan 1752

Target Mass	Rel. to Mass	Lower Limit%	Upper Limit%	Rel. Abn%	Raw Abn	Result Pass/Fail
50	95	15	40	15.7	8470	PASS
75	95	30	80	49.0	26421	PASS
95	95	100	100	100.0	53877	PASS
96	95	5	9	6.8	3670	PASS
173	174	0.00	2	0.4	197	PASS
174	95	50	120	84.1	45317	PASS
175	174	5	9	7.6	3463	PASS
176	174	95	101	99.6	45155	PASS
177	176	5	9	6.8	3076	PASS

m/z	Abundance
40.00	137.0
44.10	94.0

Instrument :
MSVOA_W
ClientSampleId :
BFB442

m/z	Abundance
36.00	401.0
37.00	2084.0
38.00	1961.0
39.00	804.0
39.90	114.0
44.00	306.0
45.10	406.0
47.00	529.0
47.90	349.0
49.10	1985.0
50.00	8962.0
51.00	2812.0
52.10	105.0
55.10	175.0
56.00	664.0
57.00	1275.0
58.20	63.0
59.00	79.0
60.00	490.0
61.00	2893.0
62.00	2463.0
63.00	2014.0
64.10	244.0
64.90	237.0
67.10	199.0
68.00	5518.0
69.00	5820.0
70.00	556.0
72.10	328.0
73.00	2668.0
74.00	10148.0
75.00	28696.0
76.00	2644.0
77.00	317.0
77.90	259.0
78.90	1758.0
80.00	516.0
80.90	1918.0
82.00	356.0
82.90	60.0
87.00	2156.0
87.90	2493.0
90.90	223.0
92.00	1394.0
93.00	2429.0
94.00	6559.0
95.00	57232.0
96.00	4089.0
97.00	140.0
103.00	78.0
104.00	220.0
104.80	102.0
105.80	246.0
109.80	71.0
111.00	108.0
112.00	69.0
114.90	76.0
116.00	192.0
116.90	426.0
118.00	224.0
118.90	405.0
124.90	184.0
127.90	169.0
128.90	115.0
129.90	234.0
130.80	88.0
133.00	409.0
133.80	164.0
135.00	100.0
136.90	73.0
141.00	529.0
143.00	509.0
145.00	116.0
146.00	80.0
146.80	75.0
147.90	176.0
148.90	80.0
154.70	103.0
157.00	154.0
160.80	89.0
170.90	50.0
171.80	351.0
173.00	590.0
173.90	41112.0
175.00	3397.0
175.90	41624.0
176.90	3407.0
177.80	138.0
179.00	109.0
191.00	327.0
192.90	429.0
193.90	178.0

Instrument :
MSVOA_W
ClientSampleId :
BFB442

195.00	77.0
203.10	61.0
205.00	90.0
207.00	352.0
208.90	68.0
248.80	410.0
249.90	87.0
250.90	183.0
265.10	361.0
265.90	155.0
266.90	87.0
281.10	5063.0
282.00	1404.0
283.10	577.0
283.90	199.0

Instrument :
MSVOA_W
ClientSampleId :
BFB442

m/z	Abundance
36.00	403.0
37.00	2092.0
38.00	1751.0
39.00	674.0
40.00	116.0
44.10	352.0
45.00	470.0
46.90	648.0
47.90	309.0
49.00	2192.0
50.00	9276.0
51.00	2923.0
52.00	185.0
55.10	149.0
56.10	804.0
57.00	1472.0
58.00	66.0
60.00	547.0
61.00	2530.0
62.10	2758.0
63.00	2157.0
64.00	268.0
65.10	226.0
67.00	173.0
68.00	5866.0
69.00	5814.0
70.00	367.0
72.10	271.0
73.00	2991.0
74.00	10847.0
75.00	29376.0
76.10	2661.0
77.00	421.0
77.90	262.0
78.90	1986.0
79.90	541.0
81.00	1926.0
81.90	435.0
85.90	64.0
87.00	2425.0
87.90	2292.0
90.90	276.0
92.00	1855.0
93.00	2673.0
94.00	7156.0
95.00	59168.0
96.00	4164.0
97.00	175.0
103.00	67.0
103.90	302.0
104.90	73.0
106.00	236.0
109.80	54.0
111.00	56.0
111.90	83.0
114.90	135.0
115.80	238.0
116.90	400.0
118.00	284.0
118.90	394.0
125.10	86.0
127.90	166.0
128.90	181.0
130.00	284.0
130.90	109.0
133.00	192.0
133.90	69.0
135.00	119.0
137.00	151.0
141.00	552.0
141.90	90.0
143.00	545.0
144.90	75.0
145.70	133.0
146.90	61.0
147.90	206.0
149.00	63.0
154.90	124.0
156.90	128.0
160.90	80.0
170.80	65.0
171.90	366.0
174.00	48920.0
175.00	3704.0
175.90	51200.0
176.90	3237.0
177.90	111.0
191.00	223.0
193.00	283.0
207.00	189.0
248.90	144.0
251.10	59.0

Instrument :
MSVOA_W
ClientSampleId :
BFB442

265.00	206.0
265.90	50.0
266.90	71.0
281.10	2312.0
282.00	884.0
282.90	435.0
284.00	92.0

Instrument :
MSVOA_W
ClientSampleId :
BFB442

m/z	Abundance
36.00	342.0
37.10	1419.0
38.00	1334.0
39.10	492.0
40.00	168.0
44.10	309.0
45.00	391.0
47.00	299.0
48.00	257.0
49.00	1502.0
50.10	7173.0
51.00	2164.0
52.10	111.0
55.00	71.0
56.00	535.0
57.00	1171.0
60.00	504.0
61.00	2116.0
62.00	2266.0
63.00	1437.0
64.00	220.0
65.20	134.0
66.90	81.0
68.00	4424.0
69.00	4025.0
70.10	383.0
71.90	204.0
73.10	1785.0
74.10	7288.0
75.00	21192.0
76.10	1933.0
77.00	275.0
77.80	108.0
78.90	1426.0
80.00	309.0
81.00	1260.0
82.00	319.0
83.00	71.0
87.00	1943.0
88.00	1780.0
90.80	197.0
91.90	1470.0
93.00	1783.0
94.00	5434.0
95.00	45232.0
96.00	2757.0
96.90	93.0
103.90	181.0
104.70	80.0
105.90	204.0
111.90	52.0
115.90	186.0
117.00	288.0
117.90	114.0
119.00	263.0
125.00	52.0
127.90	227.0
128.90	111.0
130.00	212.0
130.90	126.0
133.00	86.0
134.90	87.0
137.00	61.0
141.00	558.0
141.90	87.0
142.90	555.0
145.00	86.0
145.80	85.0
146.90	57.0
147.80	132.0
154.80	136.0
156.90	65.0
158.80	76.0
160.90	75.0
172.00	323.0
173.90	45920.0
174.90	3289.0
175.90	42640.0
177.00	2583.0
177.90	114.0
191.10	76.0
192.90	96.0
207.00	104.0
249.00	124.0
265.10	97.0
281.00	996.0
281.90	259.0
282.90	217.0

Instrument :
MSVOA_W
ClientSampleId :
BFB442