

Data Path : Z:\VOASRV\HPCHEM1\MSVOA W\DATA\VW022719\  
 Data File : VW008850.D  
 Acq On : 27 Feb 2019 13:15  
 Operator : SY/VA  
 Sample : K1627-01  
 Misc : 5.61G/5ML/MSVOA W/SOIL  
 ALS Vial : 6 Sample Multiplier: 1

**Instrument :**  
 MSVOA\_W  
**ClientSampleId :**  
 SB-01-(0-6)

Quant Time: Feb 28 07:29:37 2019  
 Quant Method : Z:\VOASRV\HPCHEM1\MSVOA\_W\METHOD\82W022119S.M  
 Quant Title : SW846 8260  
 QLast Update : Fri Feb 22 00:38:32 2019  
 Response via : Initial Calibration

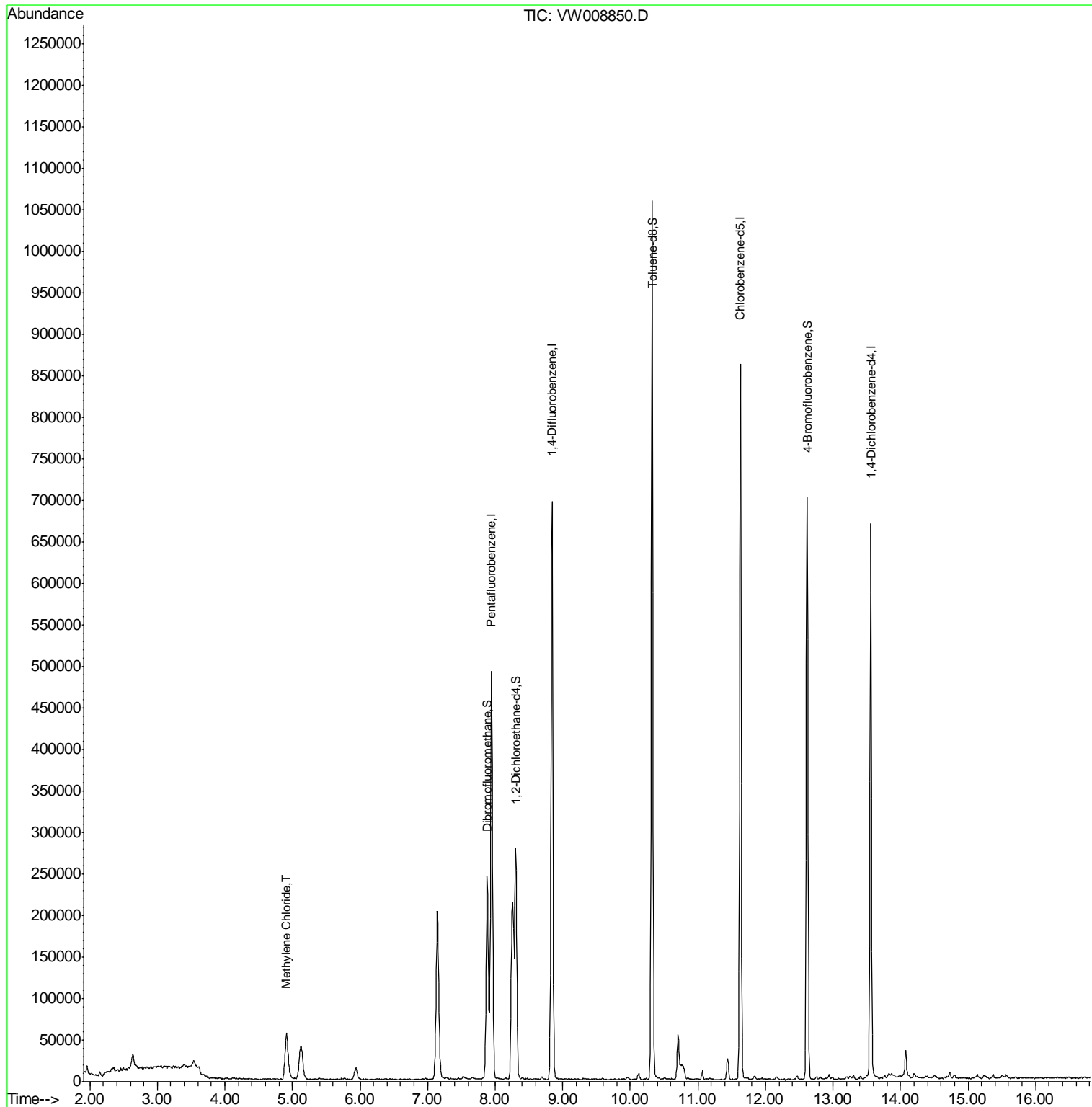
Internal Standards	R.T.	QIon	Response	Conc	Units	Dev(Min)
1) Pentafluorobenzene	7.95	168	374735	50.00	ug/l	0.00
34) 1,4-Difluorobenzene	8.84	114	575481	50.00	ug/l	0.00
63) Chlorobenzene-d5	11.63	117	472440	50.00	ug/l	0.00
72) 1,4-Dichlorobenzene-d4	13.56	152	172240	50.00	ug/l	0.00
System Monitoring Compounds						
33) 1,2-Dichloroethane-d4	8.30	65	198293	56.42	ug/l	0.00
Spiked Amount	50.000		Recovery	=	112.84%	
35) Dibromofluoromethane	7.88	113	165851	48.00	ug/l	0.00
Spiked Amount	50.000		Recovery	=	96.00%	
50) Toluene-d8	10.32	98	665144	49.87	ug/l	0.00
Spiked Amount	50.000		Recovery	=	99.74%	
62) 4-Bromofluorobenzene	12.62	95	194717	37.28	ug/l	0.00
Spiked Amount	50.000		Recovery	=	74.56%	
Target Compounds						Qvalue
20) Methylene Chloride	4.92	84	41162	5.733	ug/l	92

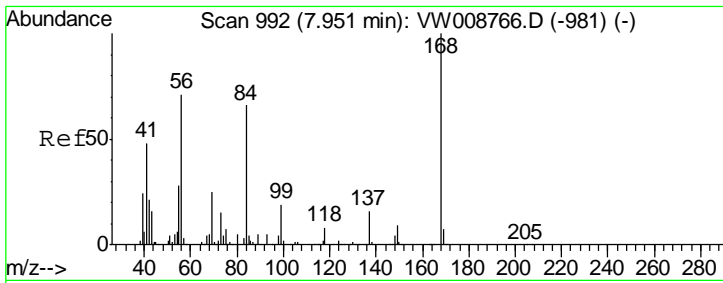
(#) = qualifier out of range (m) = manual integration (+) = signals summed

Data Path : Z:\VOASRV\HPCHEM1\MSVOA W\DATA\VW022719\  
 Data File : VW008850.D  
 Acq On : 27 Feb 2019 13:15  
 Operator : SY/VA  
 Sample : K1627-01  
 Misc : 5.61G/5ML/MSVOA W/SOIL  
 ALS Vial : 6 Sample Multiplier: 1

Instrument :  
 MSVOA\_W  
 ClientSampled :  
 SB-01-(0-6)

Quant Time: Feb 28 07:29:37 2019  
 Quant Method : Z:\VOASRV\HPCHEM1\MSVOA\_W\METHOD\82W022119S.M  
 Quant Title : SW846 8260  
 QLast Update : Fri Feb 22 00:38:32 2019  
 Response via : Initial Calibration

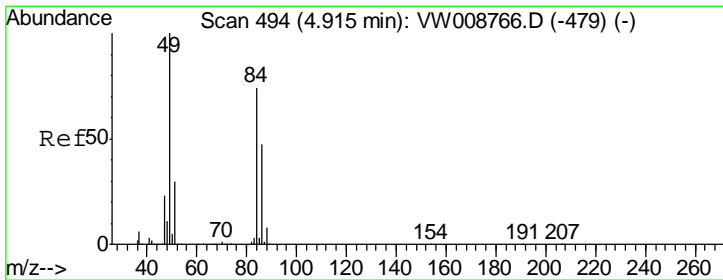
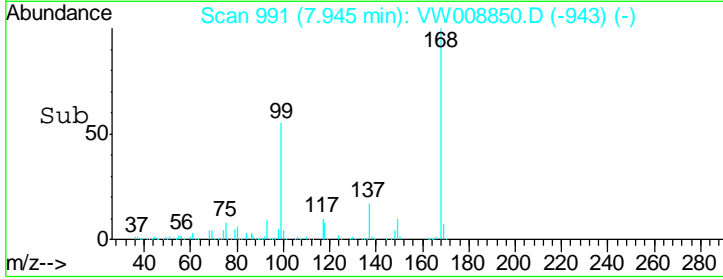
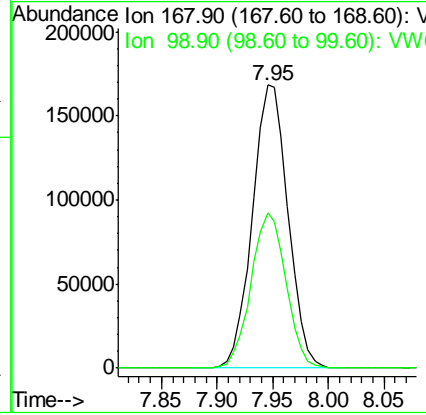
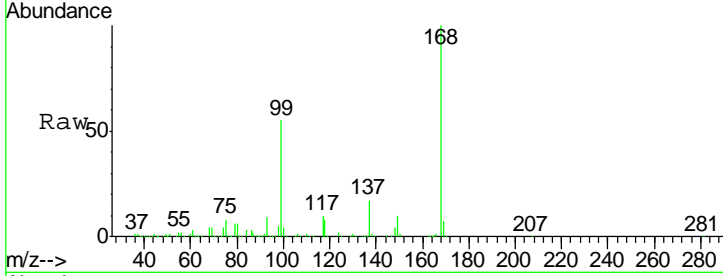




#1  
 Pentafluorobenzene  
 Concen: 50.000 ug/l  
 RT: 7.95 min Scan# 991  
 Delta R.T. -0.01 min  
 Lab File: VW008850.D  
 Acq: 27 Feb 2019 13:15

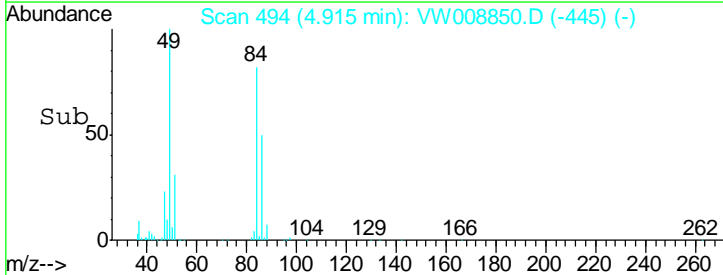
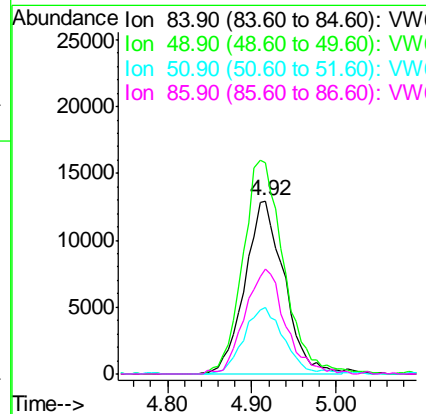
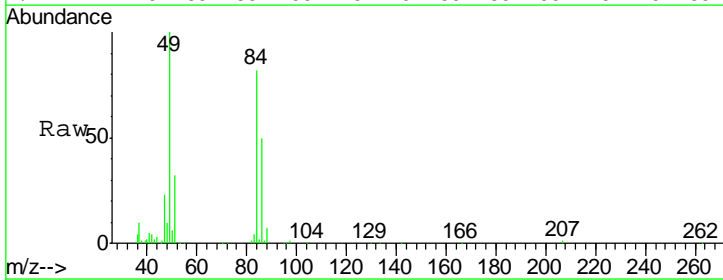
Instrument :  
 MSVOA\_W  
 ClientSampled :  
 SB-01-(0-6)

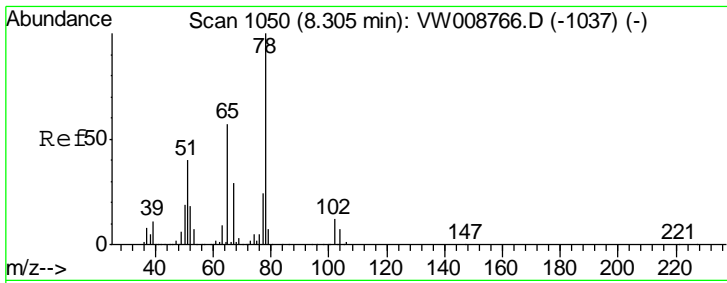
Tgt Ion	Resp	Lower	Upper
168	100		
99	54.7	42.2	63.2



#20  
 Methylene Chloride  
 Concen: 5.733 ug/l  
 RT: 4.92 min Scan# 494  
 Delta R.T. 0.00 min  
 Lab File: VW008850.D  
 Acq: 27 Feb 2019 13:15

Tgt Ion	Resp	Lower	Upper
84	100		
49	121.5	108.2	162.2
51	38.4	32.7	49.1
86	60.4	50.3	75.5

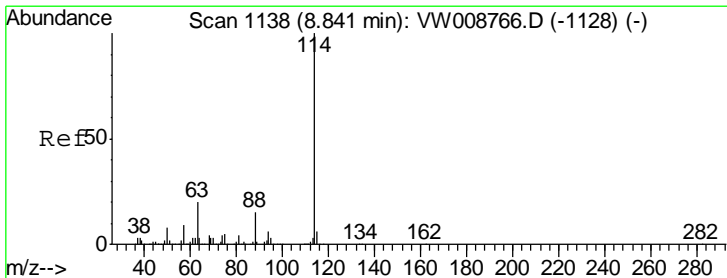
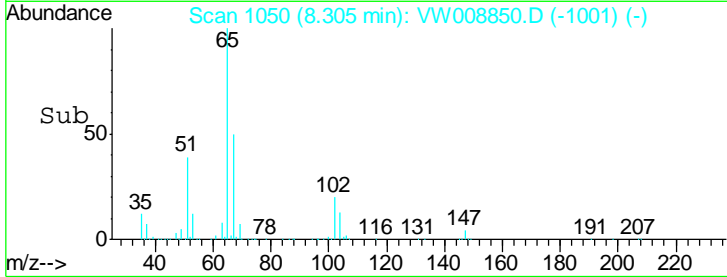
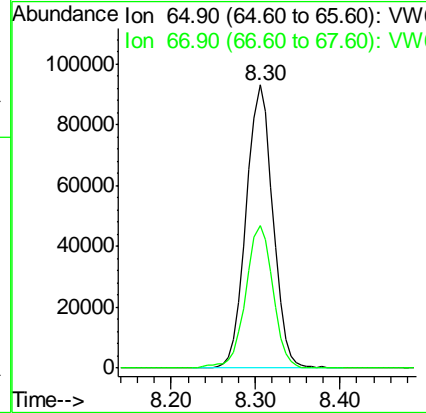
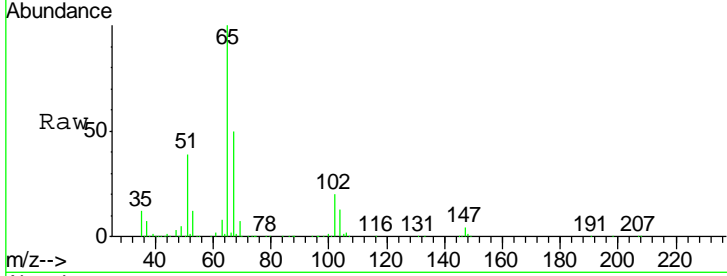




#33  
 1,2-Dichloroethane-d4  
 Concen: 56.419 ug/l  
 RT: 8.30 min Scan# 1050  
 Delta R.T. -0.00 min  
 Lab File: VW008850.D  
 Acq: 27 Feb 2019 13:15

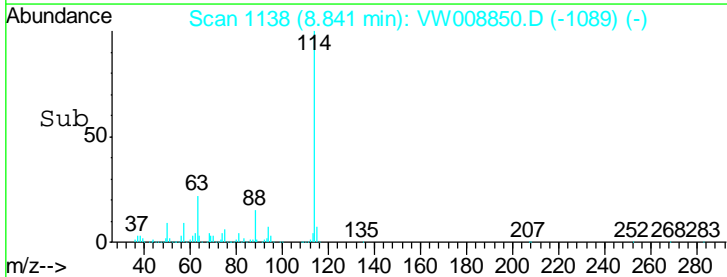
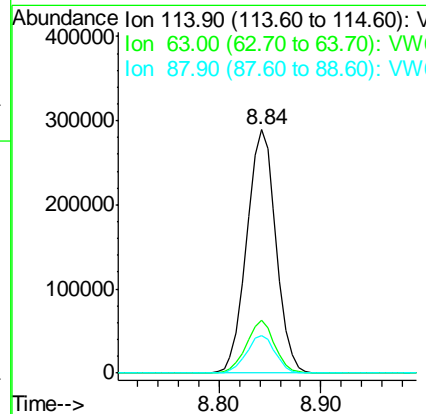
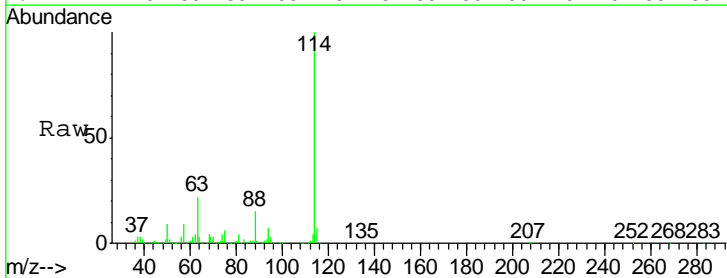
Instrument :  
 MSVOA\_W  
 ClientSampled :  
 SB-01-(0-6)

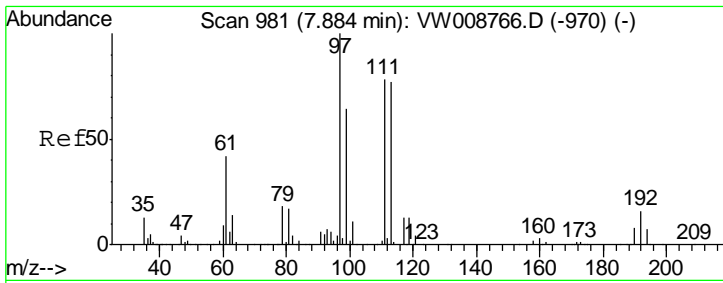
Tgt Ion: 65 Resp: 198293  
 Ion Ratio Lower Upper  
 65 100  
 67 51.5 0.0 101.4



#34  
 1,4-Difluorobenzene  
 Concen: 50.000 ug/l  
 RT: 8.84 min Scan# 1138  
 Delta R.T. -0.00 min  
 Lab File: VW008850.D  
 Acq: 27 Feb 2019 13:15

Tgt Ion: 114 Resp: 575481  
 Ion Ratio Lower Upper  
 114 100  
 63 21.9 0.0 40.8  
 88 15.5 0.0 30.4

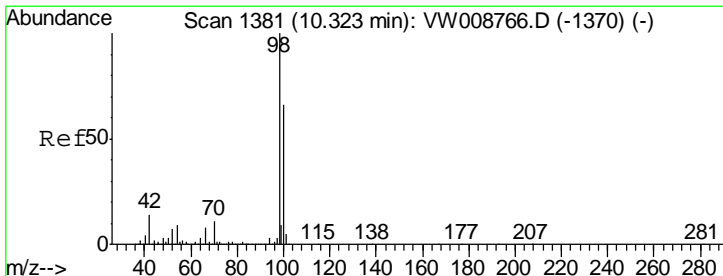
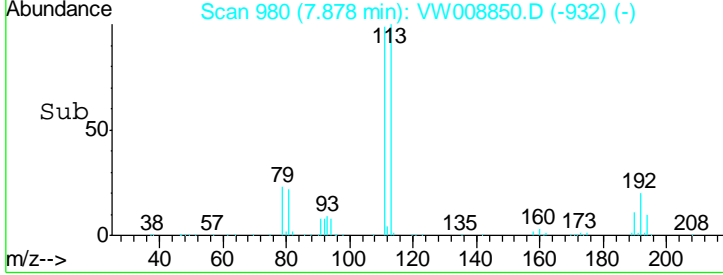
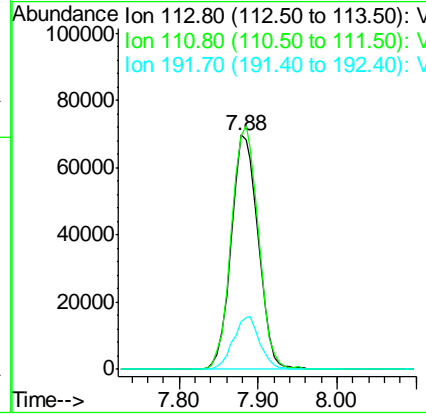
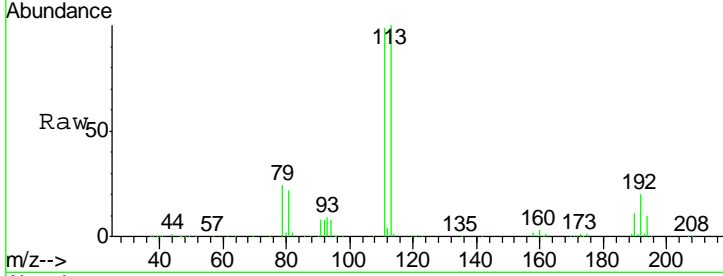




#35  
 Dibromofluoromethane  
 Concen: 48.000 ug/l  
 RT: 7.88 min Scan# 980  
 Delta R.T. -0.01 min  
 Lab File: VW008850.D  
 Acq: 27 Feb 2019 13:15

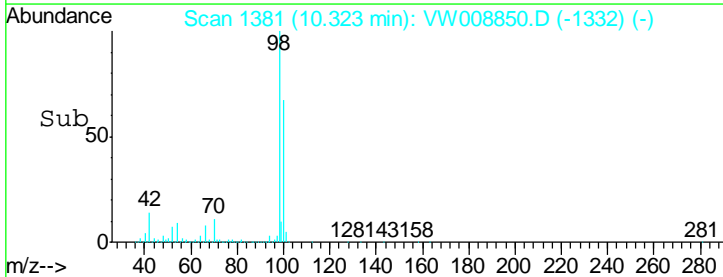
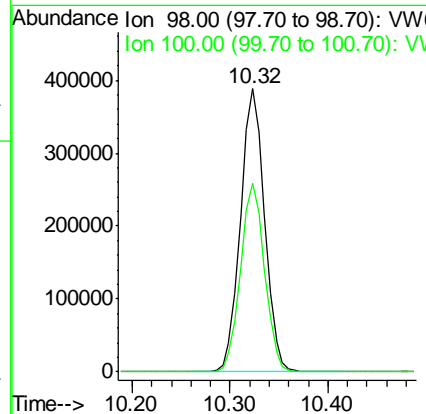
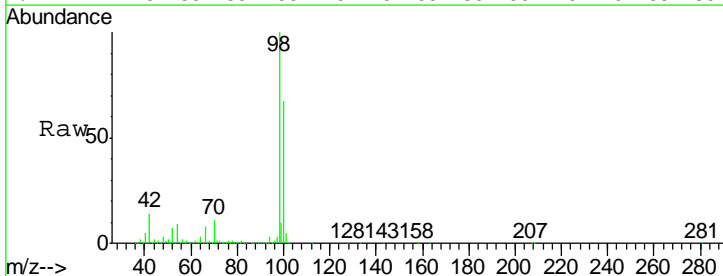
**Instrument :**  
 MSVOA\_W  
**ClientSampled :**  
 SB-01-(0-6)

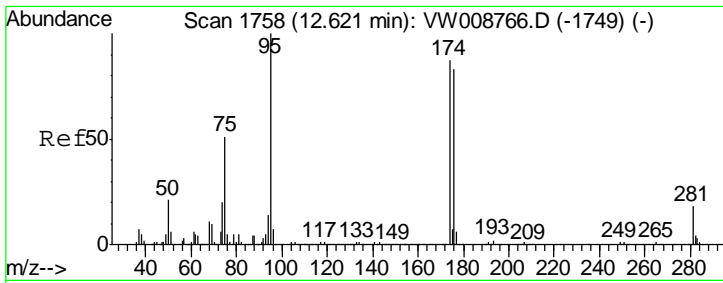
Tgt Ion	Resp	Lower	Upper
113	165851		
111	104.2	81.9	122.9
192	21.9	17.1	25.7



#50  
 Toluene-d8  
 Concen: 49.867 ug/l  
 RT: 10.32 min Scan# 1381  
 Delta R.T. -0.00 min  
 Lab File: VW008850.D  
 Acq: 27 Feb 2019 13:15

Tgt Ion	Resp	Lower	Upper
98	665144		
100	66.2	52.4	78.6

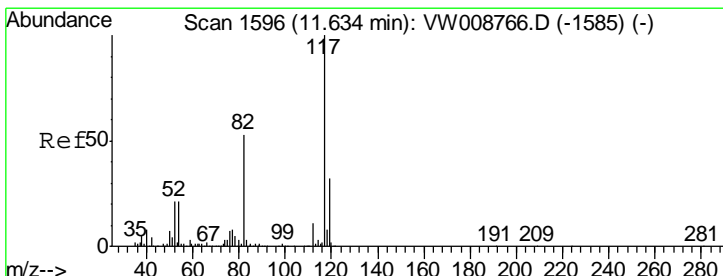
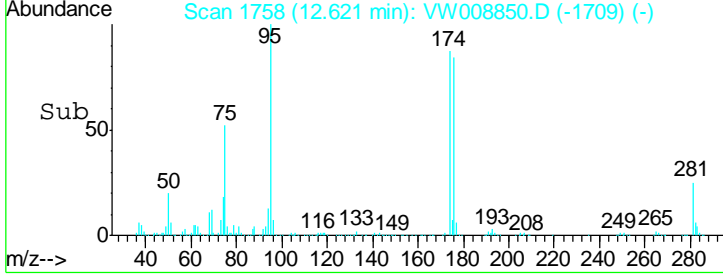
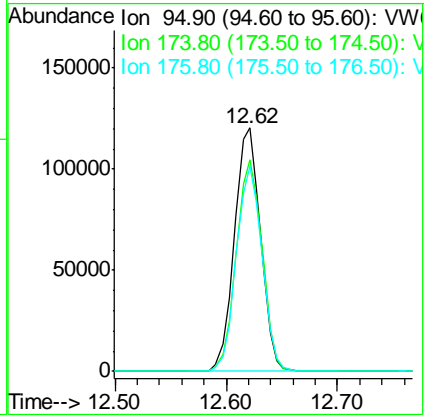
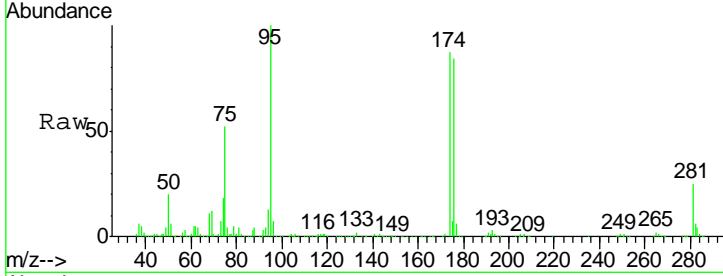




#62  
 4-Bromofluorobenzene  
 Concen: 37.284 ug/l  
 RT: 12.62 min Scan# 1758  
 Delta R.T. -0.00 min  
 Lab File: VW008850.D  
 Acq: 27 Feb 2019 13:15

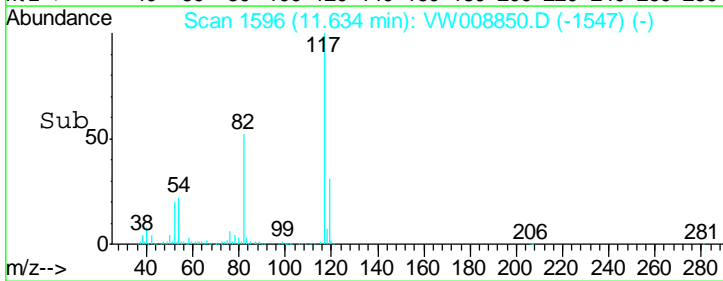
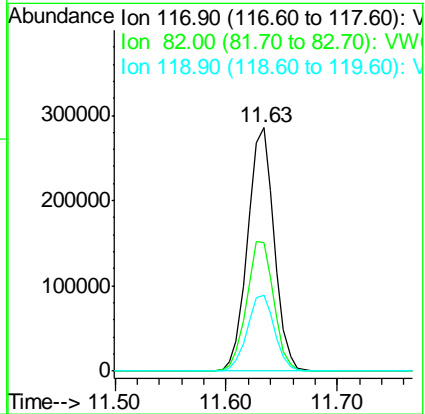
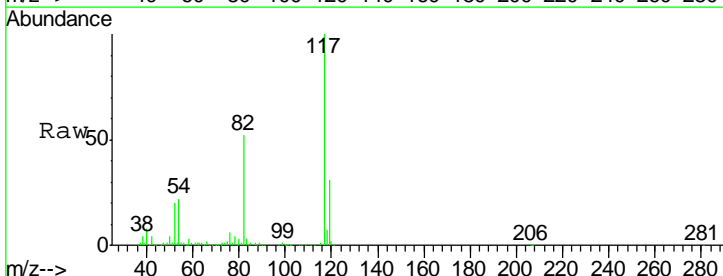
Instrument : MSVOA\_W  
 ClientSampled : SB-01-(0-6)

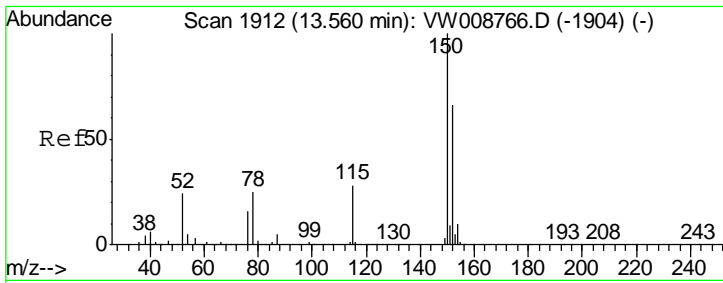
Tgt Ion	Resp	Lower	Upper
95	194717		
174	86.6	0.0	169.2
176	83.2	0.0	163.6



#63  
 Chlorobenzene-d5  
 Concen: 50.000 ug/l  
 RT: 11.63 min Scan# 1596  
 Delta R.T. -0.00 min  
 Lab File: VW008850.D  
 Acq: 27 Feb 2019 13:15

Tgt Ion	Resp	Lower	Upper
117	472440		
82	52.5	42.2	63.4
119	31.1	25.9	38.9





#72  
 1,4-Dichlorobenzene-d4  
 Concen: 50.000 ug/l  
 RT: 13.56 min Scan# 1912  
 Delta R.T. -0.00 min  
 Lab File: VW008850.D  
 Acq: 27 Feb 2019 13:15

Instrument :  
 MSVOA\_W  
 ClientSampled :  
 SB-01-(0-6)

Tot Ion	Resp	Lower	Upper
152	100		
115	56.3	28.6	85.8
150	154.6	0.0	348.0

