

Data Path : Z:\VOASRV\HPCHEM1\MSVOA W\DATA\VW030119\
 Data File : VW008918.D
 Acq On : 01 Mar 2019 13:02
 Operator : SY/VA
 Sample : K1657-01
 Misc : 7.18G/10ML/MSVOA W/SOIL
 ALS Vial : 1 Sample Multiplier: 1

Instrument :
 MSVOA_W
Client Sampled :
 DB647

Manual Integrations
APPROVED
 MMDadoda
 3/5/2019 11:47:19 PM

Quant Time: Mar 04 17:25:59 2019
 Quant Method : Z:\VOASRV\HPCHEM1\MSVOA_W\METHOD\SOM2WLM022019S.M
 Quant Title : VOC Analysis
 QLast Update : Sat Mar 02 02:55:16 2019
 Response via : Initial Calibration

Internal Standards	R.T.	QIon	Response	Conc	Units	Dev(Min)
1) 1,4-Difluorobenzene	8.84	114	67655	25.00	ug/L	0.00
28) Chlorobenzene-d5	11.63	117	49204	25.00	ug/L	0.00
60) 1,4-Dichlorobenzene-d4	13.56	152	12483	25.00	ug/L	0.00

System Monitoring Compounds

4) Vinyl Chloride-d3	2.35	65	20773	19.74	ug/L	0.00	MMDadoda
Spiked Amount	25.000	Range	30 - 150	Recovery	=	78.96%	
7) Chloroethane-d5	2.89	69	19646	20.79	ug/L	0.00	
Spiked Amount	25.000	Range	30 - 150	Recovery	=	83.16%	
10) 1,1-Dichloroethene-d2	4.02	63	32421	18.52	ug/L	0.00	3/5/2019 11:47:19 PM
Spiked Amount	25.000	Range	45 - 110	Recovery	=	74.08%	
20) 2-Butanone-d5	7.08	46	9358m	29.82	ug/L	0.00	
Spiked Amount	50.000	Range	20 - 135	Recovery	=	59.64%	
24) Chloroform-d	7.65	84	19030	11.63	ug/L	0.00	
Spiked Amount	25.000	Range	40 - 150	Recovery	=	46.52%	
26) 1,2-Dichloroethane-d4	8.31	65	24223	25.09	ug/L	0.00	
Spiked Amount	25.000	Range	70 - 130	Recovery	=	100.36%	
29) Benzene-d6	8.27	84	78609	33.28	ug/L	0.00	
Spiked Amount	25.000	Range	20 - 135	Recovery	=	133.12%	
33) 1,2-Dichloropropane-d6	9.27	67	23253	33.60	ug/L	0.00	
Spiked Amount	25.000	Range	70 - 120	Recovery	=	134.40%#	
37) Toluene-d8	10.32	98	62930	26.60	ug/L	0.00	
Spiked Amount	25.000	Range	30 - 130	Recovery	=	106.40%	
38) trans-1,3-Dichloropropene-	10.58	79	7713	22.24	ug/L	0.00	
Spiked Amount	25.000	Range	30 - 135	Recovery	=	88.96%	
39) 2-Hexanone-d5	10.93	63	5871	31.14	ug/L	0.00	
Spiked Amount	50.000	Range	20 - 135	Recovery	=	62.28%	
48) 1,1,2,2-Tetrachloroethane-	12.69	84	14347	20.65	ug/L	0.00	
Spiked Amount	25.000	Range	45 - 120	Recovery	=	82.60%	
61) 1,2-Dichlorobenzene-d4	13.86	152	11368	25.55	ug/L	0.00	
Spiked Amount	25.000	Range	75 - 120	Recovery	=	102.20%	

Target Compounds				Ovalue
16) Methylene chloride	4.90	84	2472m	2.260 ug/L

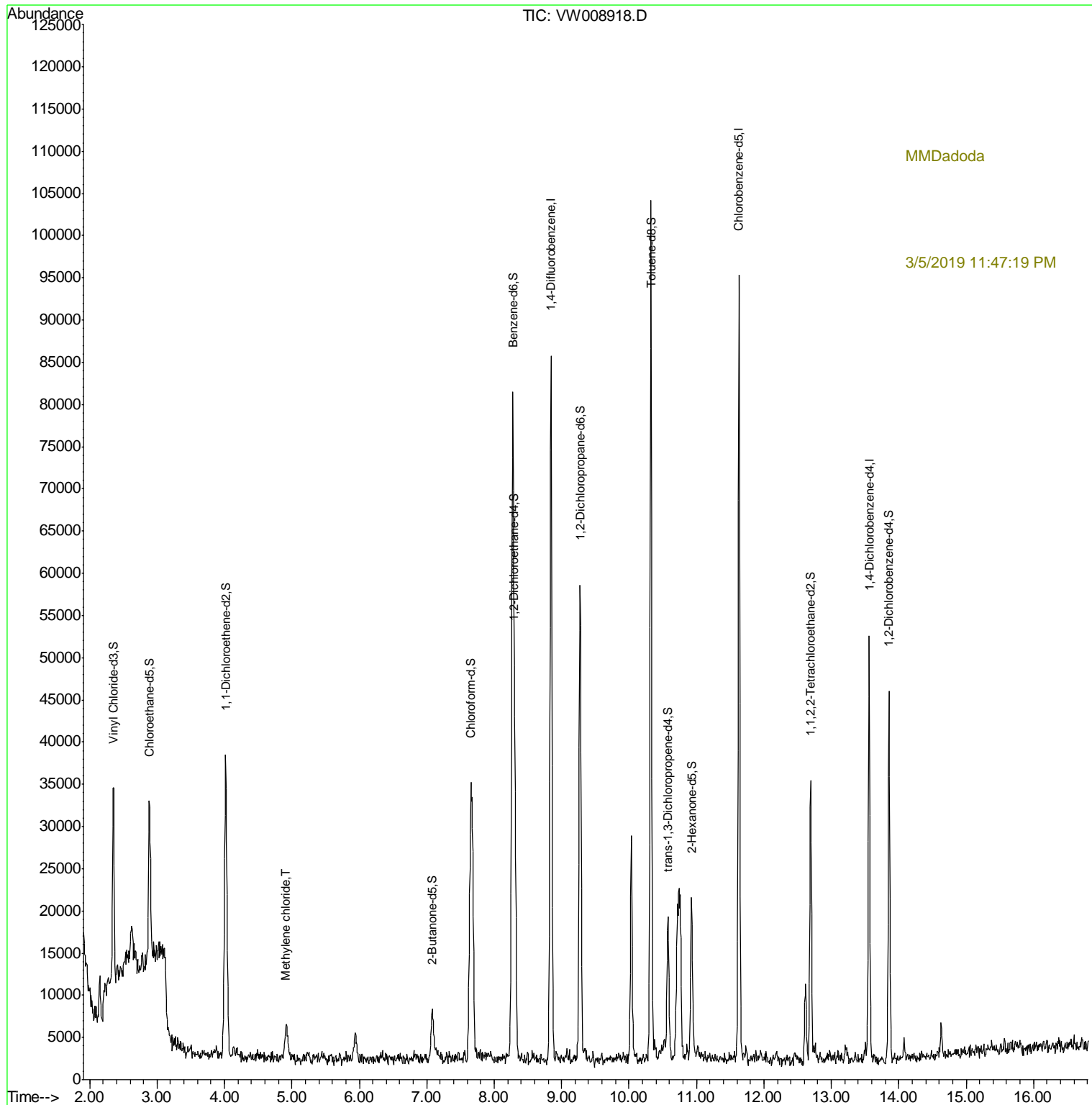
(#) = qualifier out of range (m) = manual integration (+) = signals summed

Data Path : Z:\VOASRV\HPCHEM1\MSVOA W\DATA\VW030119\
 Data File : VW008918.D
 Acq On : 01 Mar 2019 13:02
 Operator : SY/VA
 Sample : K1657-01
 Misc : 7.18G/10ML/MSVOA W/SOIL
 ALS Vial : 1 Sample Multiplier: 1

Instrument :
 MSVOA_W
Client Sampled :
 DB647

Manual Integrations
APPROVED
 MMDadoda
 3/5/2019 11:47:19 PM

Quant Time: Mar 04 17:25:59 2019
 Quant Method : Z:\VOASRV\HPCHEM1\MSVOA_W\METHOD\SOM2WLM022019S.M
 Quant Title : VOC Analysis
 QLast Update : Sat Mar 02 02:55:16 2019
 Response via : Initial Calibration



MMDadoda

3/5/2019 11:47:19 PM