

Data Path : Z:\VOASRV\HPCHEM1\MSVOA W\DATA\VW030519\
 Data File : VW008986.D
 Acq On : 05 Mar 2019 03:18
 Operator : SY/VA
 Sample : K1712-19
 Misc : 6.02G/5ML/MSVOA W/SOIL
 ALS Vial : 24 Sample Multiplier: 1

Instrument :
 MSVOA_W
 ClientSampled :
 Z-2-4

Integration Parameters: RTEINT.P

Integrator: RTE
 Smoothing : ON Filtering: 5
 Sampling : 1 Min Area: 3 % of largest Peak
 Start Thrs: 0.2 Max Peaks: 100
 Stop Thrs : 0 Peak Location: TOP

If leading or trailing edge < 100 prefer < Baseline drop else tangent >
 Peak separation: 5

Method : Z:\VOASRV\HPCHEM1\MSVOA_W\METHOD\82W022119S.M
 Title : SW846 8260

Signal : TIC

peak #	R.T. min	first scan	max scan	last scan	PK TY	peak height	corr. area	corr. % max.	% of total
1	2.642	115	121	129	rBV5	14274	41494	2.68%	0.435%
2	4.129	358	365	373	rBV	16951	40991	2.64%	0.430%
3	4.916	482	494	506	rBV2	41155	134379	8.67%	1.409%
4	5.123	516	528	542	rBV3	18715	70277	4.53%	0.737%
5	7.147	849	860	877	rBV	222784	627967	40.52%	6.585%
6	7.885	971	981	986	rBV	216533	517835	33.41%	5.430%
7	7.945	986	991	1006	rVB	399974	889141	57.37%	9.324%
8	8.256	1034	1042	1044	rBV2	53976	112869	7.28%	1.184%
9	8.305	1044	1050	1061	rVB	228764	520537	33.59%	5.459%
10	8.842	1128	1138	1150	rBV	577943	1140493	73.58%	11.960%
11	10.323	1372	1381	1391	rBV	885422	1549906	100.00%	16.253%
12	10.707	1437	1444	1449	rBV	29403	66738	4.31%	0.700%
13	11.067	1496	1503	1509	rBV	23696	38042	2.45%	0.399%
14	11.439	1558	1564	1573	rVB3	9196	17412	1.12%	0.183%
15	11.634	1587	1596	1606	rBV	797034	1332090	85.95%	13.969%
16	12.621	1750	1758	1770	rBV	678157	1118780	72.18%	11.732%
17	13.560	1903	1912	1921	rBV	807511	1273464	82.16%	13.354%
18	14.079	1990	1997	2002	rVB	24265	43653	2.82%	0.458%

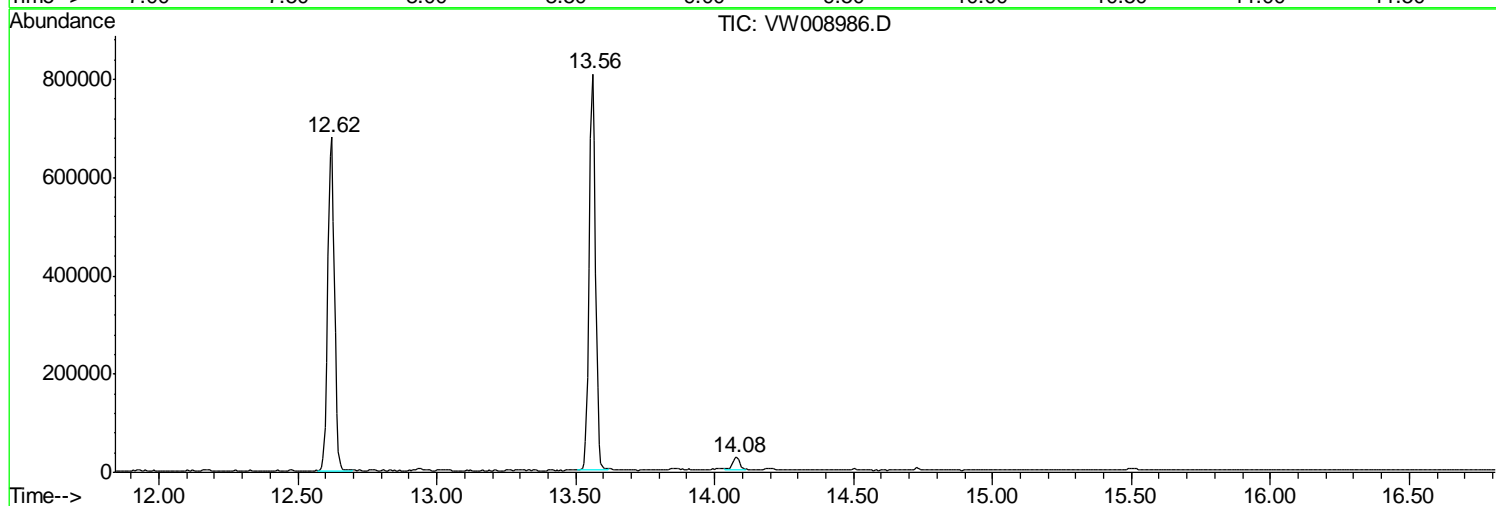
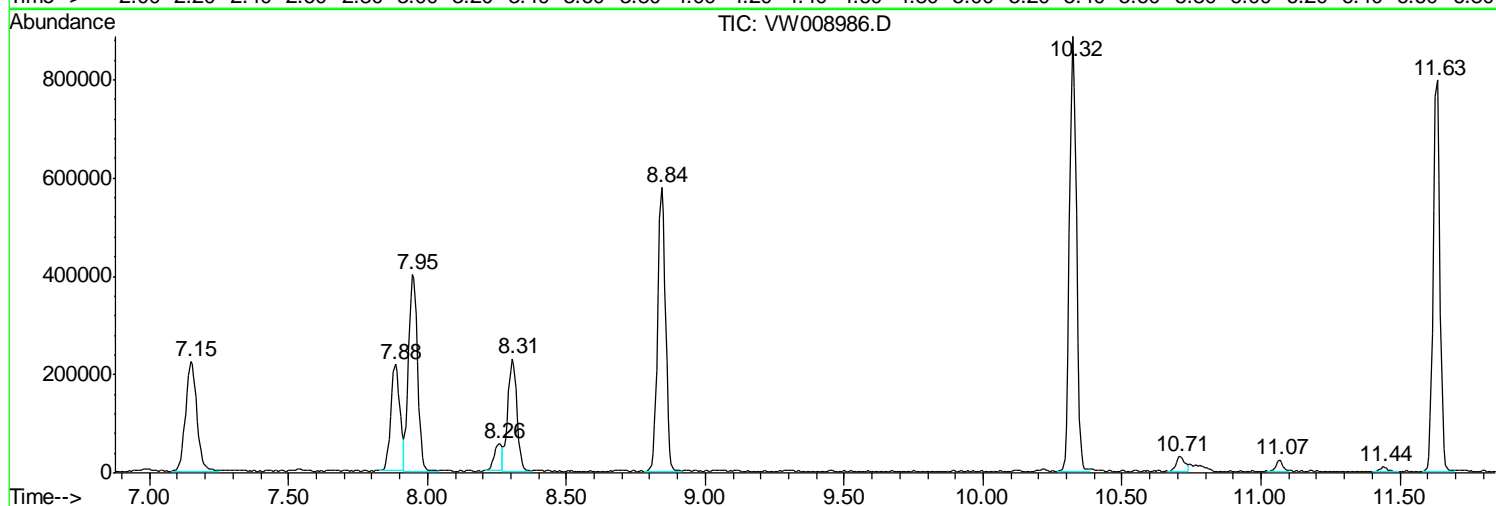
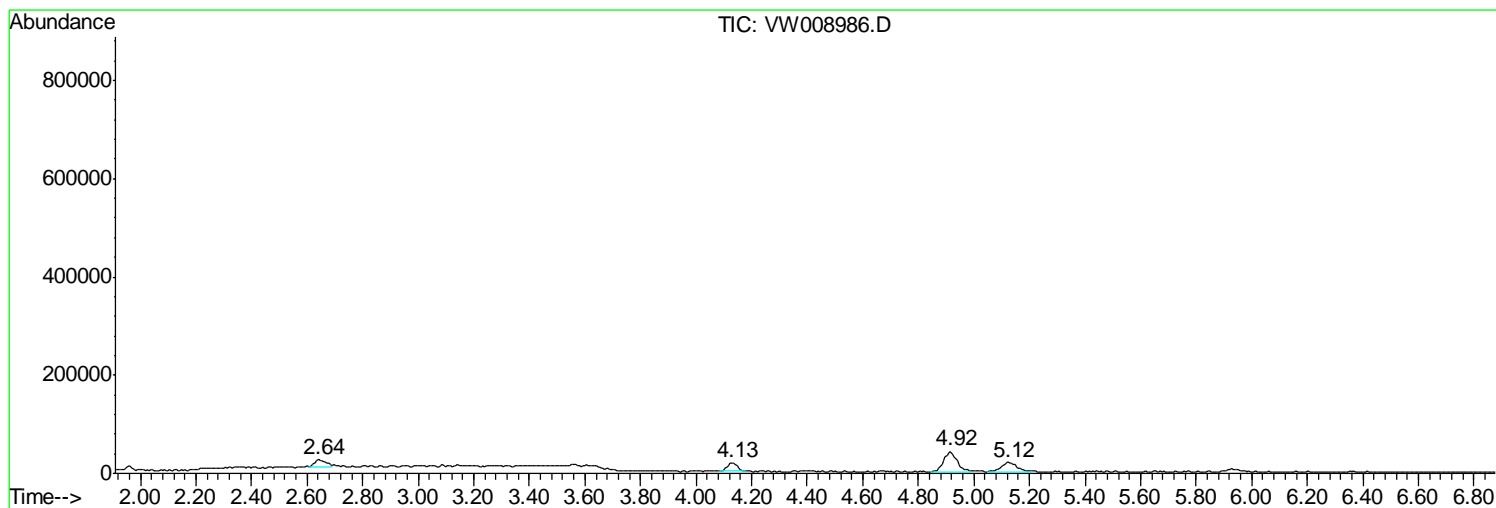
Sum of corrected areas: 9536068

Data Path : Z:\VOASRV\HPCHEM1\MSVOA W\DATA\VW030519\
Data File : VW008986.D
Acq On : 05 Mar 2019 03:18
Operator : SY/VA
Sample : K1712-19
Misc : 6.02G/5ML/MSVOA W/SOIL
ALS Vial : 24 Sample Multiplier: 1

Instrument :
MSVOA_W
ClientSampled :
Z-2-4

Quant Method : Z:\VOASRV\HPCHEM1\MSVOA_W\METHOD\82W022119S.M
Quant Title : SW846 8260

TIC Library : C:\DATABASE\NIST11.L
TIC Integration Parameters: LSCINT.P



Data Path : Z:\VOASRV\HPCHEM1\MSVOA_W\DATA\VW030519\
Data File : VW008986.D
Acq On : 05 Mar 2019 03:18
Operator : SY/VA
Sample : K1712-19
Misc : 6.02G/5ML/MSVOA_W/SOIL
ALS Vial : 24 Sample Multiplier: 1

Instrument :
MSVOA_W
ClientSampleId :
Z-2-4

Quant Method : Z:\VOASRV\HPCHEM1\MSVOA_W\METHOD\82W022119S.M
Quant Title : SW846 8260

TIC Library : C:\DATABASE\NIST11.L
TIC Integration Parameters: LSCINT.P

No Library Search Compounds Detected

Data Path : Z:\VOASRV\HPCHEM1\MSVOA_W\DATA\VW030519\
Data File : VW008986.D
Acq On : 05 Mar 2019 03:18
Operator : SY/VA
Sample : K1712-19
Misc : 6.02G/5ML/MSVOA_W/SOIL
ALS Vial : 24 Sample Multiplier: 1

Instrument :
MSVOA_W
ClientSampleId :
Z-2-4

Quant Method : Z:\VOASRV\HPCHEM1\MSVOA_W\METHOD\82W022119S.M
Quant Title : SW846 8260

TIC Library : C:\DATABASE\NIST11.L
TIC Integration Parameters: LSCINT.P

TIC Top Hit name	RT	EstConc	Units	Response	--Internal Standard--			
					#	RT	Resp	Conc
