

Data Path : Z:\voasrv\HPCHEM1\MSVOA\_W\Data\VW030922\  
 Data File : VW022253.D  
 Acq On : 09 Mar 2022 15:08  
 Operator : SY/VA  
 Sample : N1816-07  
 Misc : 6.31g/10mL/MSVOA\_W/SOIL  
 ALS Vial : 1 Sample Multiplier: 1

Instrument :  
 MSVOA\_W  
 ClientSampleId :  
 DBSD4

Integration Parameters: LSCINT.P

Integrator: RTE  
 Smoothing : OFF  
 Sampling : 1  
 Start Thrs : 0.2  
 Stop Thrs : 0

Filtering: 5  
 Min Area: 0 % of largest Peak  
 Max Peaks: 100  
 Peak Location: TOP

If leading or trailing edge < 100 prefer < Baseline drop else tangent >  
 Peak separation: 5

Method : Z:\voasrv\HPCHEM1\MSVOA\_W\Method\SFAMWLM022322SMA.M  
 Title : SFAM01.0

Signal : TIC: VW022253.D\data.ms

peak #	R.T. min	first scan	max scan	last scan	PK TY	peak height	corr. area	corr. % max.	% of total
1	2.349	67	73	84	rVB	63159	102504	21.63%	2.732%
2	2.879	154	160	171	rVB	36251	78445	16.55%	2.090%
3	3.269	218	224	225	rBV2	457	795	0.17%	0.021%
4	3.294	225	228	230	rVB2	388	452	0.10%	0.012%
5	3.477	256	258	260	rBV2	487	486	0.10%	0.013%
6	3.629	281	283	284	rVB2	407	291	0.06%	0.008%
7	4.013	335	346	359	rBV2	61555	176213	37.18%	4.696%
8	4.464	418	420	421	rBV	325	323	0.07%	0.009%
9	4.513	426	428	431	rVV2	293	290	0.06%	0.008%
10	4.556	433	435	437	rVB2	442	297	0.06%	0.008%
11	4.580	437	439	440	rBV	249	260	0.05%	0.007%
12	4.623	444	446	451	rVV2	319	426	0.09%	0.011%
13	4.909	485	493	505	rVB5	2211	7019	1.48%	0.187%
14	5.214	542	543	547	rVB2	378	296	0.06%	0.008%
15	5.257	547	550	553	rBV2	221	303	0.06%	0.008%
16	5.354	563	566	571	rBV2	342	655	0.14%	0.017%
17	5.574	600	602	607	rVB2	456	503	0.11%	0.013%
18	5.623	607	610	613	rVB2	382	462	0.10%	0.012%
19	5.659	613	616	619	rBV3	328	521	0.11%	0.014%
20	5.726	626	627	631	rVB2	290	258	0.05%	0.007%
21	5.946	658	663	669	rBV8	815	1764	0.37%	0.047%
22	6.007	671	673	675	rVB2	349	283	0.06%	0.008%
23	6.184	699	702	704	rBB2	331	272	0.06%	0.007%
24	6.281	716	718	721	rVB2	329	306	0.06%	0.008%
25	6.793	799	802	803	rBV	340	333	0.07%	0.009%
26	7.007	834	837	839	rBV2	367	413	0.09%	0.011%
27	7.080	841	849	859	rVV	14067	38538	8.13%	1.027%
28	7.647	932	942	954	rBV	81180	200863	42.39%	5.353%
29	7.878	975	980	983	rBV3	541	951	0.20%	0.025%
30	7.915	984	986	987	rBV	455	268	0.06%	0.007%
31	8.019	1002	1003	1006	rBV2	347	358	0.08%	0.010%
32	8.159	1023	1026	1027	rBV3	677	624	0.13%	0.017%
33	8.275	1035	1045	1062	rBV2	158440	473887	100.00%	12.629%
34	8.677	1108	1111	1112	rBV2	364	295	0.06%	0.008%
35	8.689	1112	1113	1117	rVV4	782	922	0.19%	0.025%
36	8.756	1123	1124	1127	rBV	456	422	0.09%	0.011%

Data Path : Z:\voasrv\HPCHEM1\MSVOA\_W\Data\VW030922\  
 Data File : VW022253.D  
 Acq On : 09 Mar 2022 15:08  
 Operator : SY/VA  
 Sample : N1816-07  
 Misc : 6.31g/10mL/MSVOA\_W/SOIL  
 ALS Vial : 1 Sample Multiplier: 1

Instrument :  
 MSVOA\_W  
 ClientSampleId :  
 DBSD4

Integration Parameters: LSCINT.P

Integrator: RTE  
 Smoothing : OFF  
 Sampling : 1  
 Start Thrs: 0.2  
 Stop Thrs : 0

Filtering: 5  
 Min Area: 0 % of largest Peak  
 Max Peaks: 100  
 Peak Location: TOP

If leading or trailing edge < 100 prefer < Baseline drop else tangent >  
 Peak separation: 5

Method : Z:\voasrv\HPCHEM1\MSVOA\_W\Method\SFAMWLM022322SMA.M  
 Title : SFAM01.0

37	8.842	1129	1138	1149	rBV	173322	339950	71.74%	9.059%
38	9.055	1170	1173	1174	rBV2	534	560	0.12%	0.015%
39	9.085	1174	1178	1180	rBV4	1953	2645	0.56%	0.070%
40	9.177	1190	1193	1194	rVB2	489	324	0.07%	0.009%
41	9.213	1196	1199	1200	rBV2	447	348	0.07%	0.009%
42	9.274	1200	1209	1221	rVV	102093	210856	44.49%	5.619%
43	9.390	1226	1228	1229	rBV2	414	291	0.06%	0.008%
44	9.500	1243	1246	1248	rBV2	403	490	0.10%	0.013%
45	9.561	1254	1256	1258	rBV	254	283	0.06%	0.008%
46	9.866	1301	1306	1308	rBV2	380	727	0.15%	0.019%
47	9.915	1312	1314	1318	rBV3	365	490	0.10%	0.013%
48	10.036	1325	1334	1341	rBV	54562	103543	21.85%	2.759%
49	10.323	1373	1381	1388	rBV	242982	423298	89.32%	11.281%
50	10.506	1410	1411	1415	rBV2	294	284	0.06%	0.008%
51	10.573	1415	1422	1432	rBV	36481	66902	14.12%	1.783%
52	10.701	1440	1443	1445	rBV2	830	898	0.19%	0.024%
53	10.786	1455	1457	1460	rVB2	304	258	0.05%	0.007%
54	10.860	1463	1469	1474	rVV2	10616	18735	3.95%	0.499%
55	10.920	1474	1479	1489	rVB	53511	89896	18.97%	2.396%
56	11.250	1531	1533	1535	rBV	269	270	0.06%	0.007%
57	11.451	1563	1566	1567	rBV	321	346	0.07%	0.009%
58	11.628	1588	1595	1605	rVV	241679	407850	86.06%	10.869%
59	11.774	1618	1619	1622	rBV2	305	293	0.06%	0.008%
60	11.804	1622	1624	1626	rBV2	317	286	0.06%	0.008%
61	11.951	1645	1648	1651	rBV3	329	401	0.08%	0.011%
62	12.219	1691	1692	1694	rVV	491	339	0.07%	0.009%
63	12.286	1702	1703	1706	rVB	340	260	0.05%	0.007%
64	12.310	1706	1707	1709	rBV2	513	335	0.07%	0.009%
65	12.353	1712	1714	1717	rVV2	386	352	0.07%	0.009%
66	12.390	1719	1720	1724	rVB3	245	316	0.07%	0.008%
67	12.420	1724	1725	1728	rBV	252	255	0.05%	0.007%
68	12.457	1728	1731	1734	rVB2	437	556	0.12%	0.015%
69	12.481	1734	1735	1741	rVB2	207	275	0.06%	0.007%
70	12.585	1746	1752	1759	rBV4	3409	6440	1.36%	0.172%
71	12.688	1762	1769	1777	rBV	99647	165379	34.90%	4.407%
72	12.749	1777	1779	1782	rBV4	950	1072	0.23%	0.029%
73	12.884	1799	1801	1804	rVB2	348	296	0.06%	0.008%
74	12.932	1805	1809	1810	rBV2	578	771	0.16%	0.021%
75	13.012	1820	1822	1826	rBV2	578	695	0.15%	0.019%
76	13.103	1835	1837	1838	rBV	455	276	0.06%	0.007%

Data Path : Z:\voasrv\HPCHEM1\MSVOA\_W\Data\VW030922\  
 Data File : VW022253.D  
 Acq On : 09 Mar 2022 15:08  
 Operator : SY/VA  
 Sample : N1816-07  
 Misc : 6.31g/10mL/MSVOA\_W/SOIL  
 ALS Vial : 1 Sample Multiplier: 1

Instrument :  
 MSVOA\_W  
 ClientSampleId :  
 DBSD4

Integration Parameters: LSCINT.P

Integrator: RTE  
 Smoothing : OFF Filtering: 5  
 Sampling : 1 Min Area: 0 % of largest Peak  
 Start Thrs: 0.2 Max Peaks: 100  
 Stop Thrs : 0 Peak Location: TOP

If leading or trailing edge < 100 prefer < Baseline drop else tangent >  
 Peak separation: 5

Method : Z:\voasrv\HPCHEM1\MSVOA\_W\Method\SFAMWLM022322SMA.M  
 Title : SFAM01.0

77	13.237	1857	1859	1861	rBV2	411	456	0.10%	0.012%
78	13.402	1878	1886	1891	rBV6	2115	4454	0.94%	0.119%
79	13.469	1891	1897	1902	rBV3	6622	10233	2.16%	0.273%
80	13.554	1904	1911	1918	rBV	258405	409213	86.35%	10.905%
81	13.755	1940	1944	1945	rBV2	1153	1461	0.31%	0.039%
82	13.853	1952	1960	1967	rBV	217641	363931	76.80%	9.698%
83	14.060	1991	1994	1999	rVB3	1701	2732	0.58%	0.073%
84	14.103	1999	2001	2003	rBV2	337	301	0.06%	0.008%
85	14.170	2009	2012	2013	rBV	340	367	0.08%	0.010%
86	14.463	2058	2060	2062	rVB	444	375	0.08%	0.010%
87	14.523	2062	2070	2075	rBV5	1021	2882	0.61%	0.077%
88	14.719	2097	2102	2106	rVB3	3997	5806	1.23%	0.155%
89	14.944	2134	2139	2140	rBV2	355	602	0.13%	0.016%
90	15.273	2189	2193	2197	rBV4	271	406	0.09%	0.011%
91	15.395	2212	2213	2217	rBV3	441	444	0.09%	0.012%
92	15.450	2219	2222	2223	rBV	449	422	0.09%	0.011%
93	15.542	2231	2237	2244	rVB5	3676	6325	1.33%	0.169%
94	15.596	2244	2246	2249	rVB	553	517	0.11%	0.014%
95	15.627	2249	2251	2252	rBV2	460	315	0.07%	0.008%
96	16.005	2312	2313	2317	rVB	479	416	0.09%	0.011%
97	16.237	2349	2351	2355	rBV2	429	532	0.11%	0.014%
98	16.377	2372	2374	2376	rVB	689	478	0.10%	0.013%
99	16.480	2390	2391	2396	rVB3	417	353	0.07%	0.009%
100	16.596	2408	2410	2413	rVB2	344	307	0.06%	0.008%

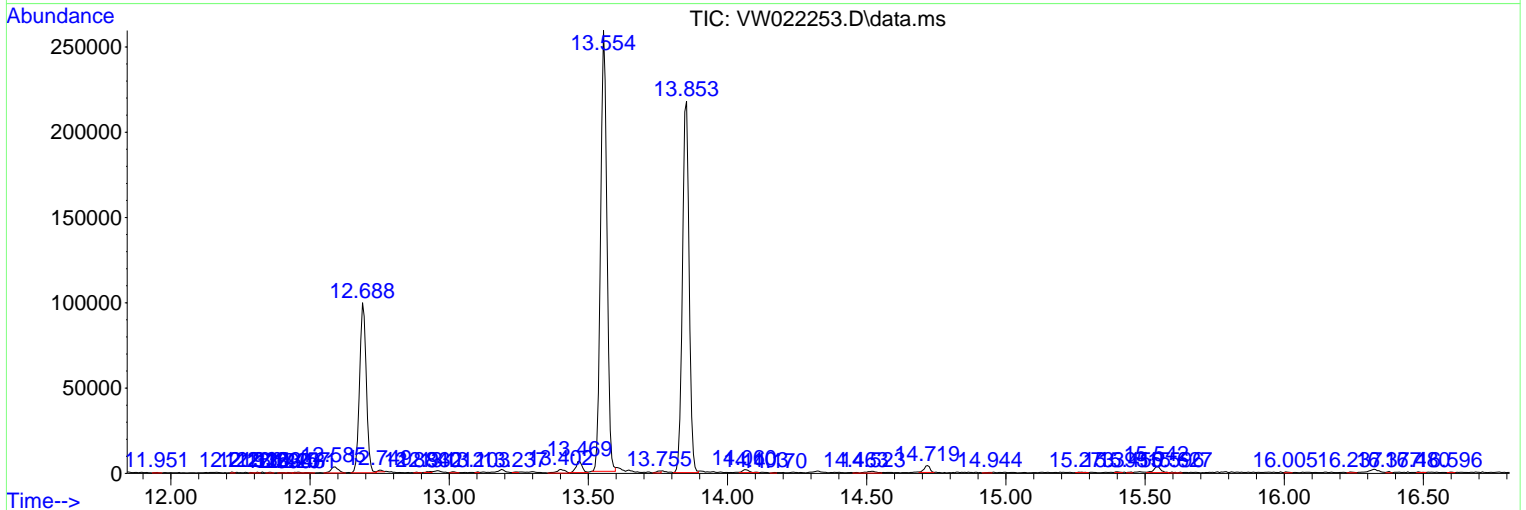
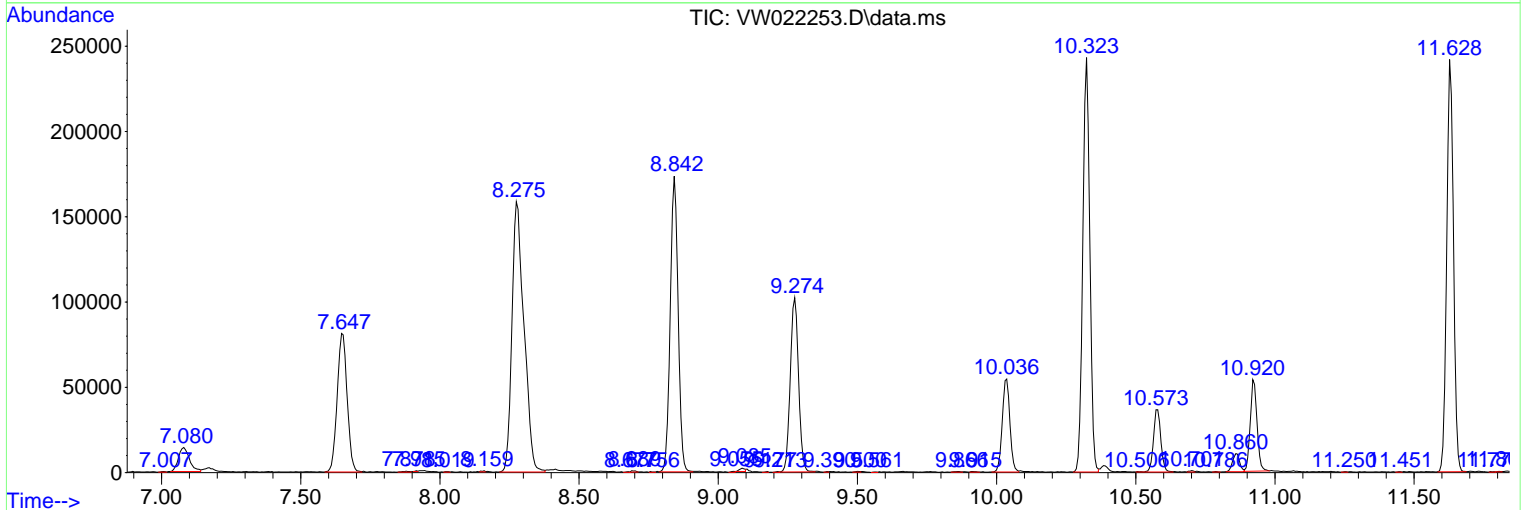
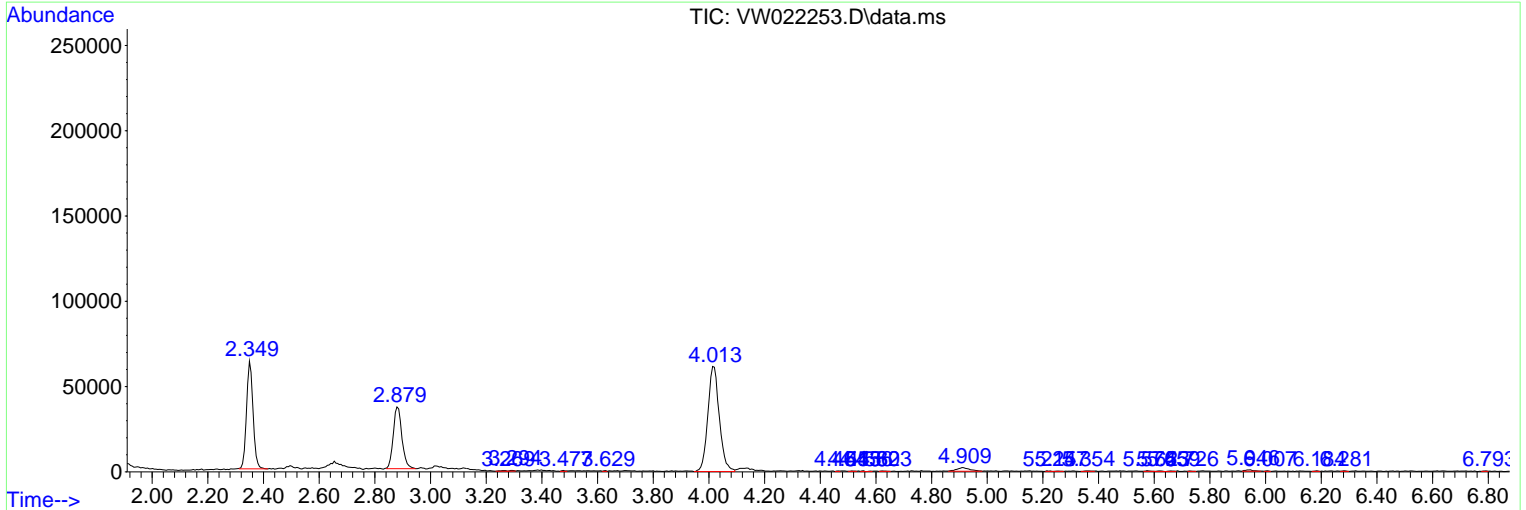
Sum of corrected areas: 3752467

Data Path : Z:\voasrv\HPCHEM1\MSVOA\_W\Data\VW030922\  
 Data File : VW022253.D  
 Acq On : 09 Mar 2022 15:08  
 Operator : SY/VA  
 Sample : N1816-07  
 Misc : 6.31g/10mL/MSVOA\_W/SOIL  
 ALS Vial : 1 Sample Multiplier: 1

**Instrument :**  
 MSVOA\_W  
**ClientSampleId :**  
 DBSD4

Quant Method : Z:\voasrv\HPCHEM1\MSVOA\_W\Method\SFAMWLM022322SMA.M  
 Quant Title : SFAM01.0

TIC Library : C:\Database\NIST20.L  
 TIC Integration Parameters: LSCINT.P



Library Search Compound Report

Data Path : Z:\voasrv\HPCHEM1\MSVOA\_W\Data\VW030922\  
Data File : VW022253.D  
Acq On : 09 Mar 2022 15:08  
Operator : SY/VA  
Sample : N1816-07  
Misc : 6.31g/10mL/MSVOA\_W/SOIL  
ALS Vial : 1 Sample Multiplier: 1

Instrument :  
MSVOA\_W  
ClientSampleId :  
DBSD4

Quant Method : Z:\voasrv\HPCHEM1\MSVOA\_W\Method\SFAMWLM022322SMA.M  
Quant Title : SFAM01.0

TIC Library : C:\Database\NIST20.L  
TIC Integration Parameters: LSCINT.P

No Library Search Compounds Detected

\*\*\*\*\*

Data Path : Z:\voasrv\HPCHEM1\MSVOA\_W\Data\VW030922\  
Data File : VW022253.D  
Acq On : 09 Mar 2022 15:08  
Operator : SY/VA  
Sample : N1816-07  
Misc : 6.31g/10mL/MSVOA\_W/SOIL  
ALS Vial : 1 Sample Multiplier: 1

Instrument :  
MSVOA\_W  
ClientSampleId :  
DBSD4

Quant Method : Z:\voasrv\HPCHEM1\MSVOA\_W\Method\SFAMWLM022322SMA.M  
Quant Title : SFAM01.0

TIC Library : C:\Database\NIST0.L  
TIC Integration Parameters: LSCINT.P

TIC Top Hit name	RT	EstConc	Units	Response	--Internal Standard--			
					#	RT	Resp	Conc

---