

Data Path : Z:\VOASRV\HPCHEM1\MSVOA_W\DATA\VW031119\
 Data File : VW009087.D
 Acq On : 11 Mar 2019 15:31
 Operator : SY/VA
 Sample : K1837-05
 Misc : 6.52G/5ML/MSVOA_W/SOIL
 ALS Vial : 12 Sample Multiplier: 1

Instrument :
 MSVOA_W
 ClientSampleId :
 MR-MH-09-COMP

Quant Time: Mar 12 08:11:55 2019
 Quant Method : Z:\VOASRV\HPCHEM1\MSVOA_W\METHOD\82W030719S.M
 Quant Title : SW846 8260
 QLast Update : Fri Mar 08 05:22:30 2019
 Response via : Initial Calibration

Internal Standards	R.T.	QIon	Response	Conc	Units	Dev(Min)
1) Pentafluorobenzene	7.95	168	255800	50.00	ug/l	0.00
34) 1,4-Difluorobenzene	8.84	114	408587	50.00	ug/l	0.00
63) Chlorobenzene-d5	11.63	117	368145	50.00	ug/l	0.00
72) 1,4-Dichlorobenzene-d4	13.56	152	171379	50.00	ug/l	0.00

System Monitoring Compounds

33) 1,2-Dichloroethane-d4	8.31	65	164925	64.08	ug/l	0.00
Spiked Amount				50.000		
			Recovery	=	128.16%	
35) Dibromofluoromethane	7.88	113	131540	53.47	ug/l	0.00
Spiked Amount				50.000		
			Recovery	=	106.94%	
50) Toluene-d8	10.32	98	491621	48.66	ug/l	0.00
Spiked Amount				50.000		
			Recovery	=	97.32%	
62) 4-Bromofluorobenzene	12.62	95	164515	41.36	ug/l	0.00
Spiked Amount				50.000		
			Recovery	=	82.72%	

Target Compounds

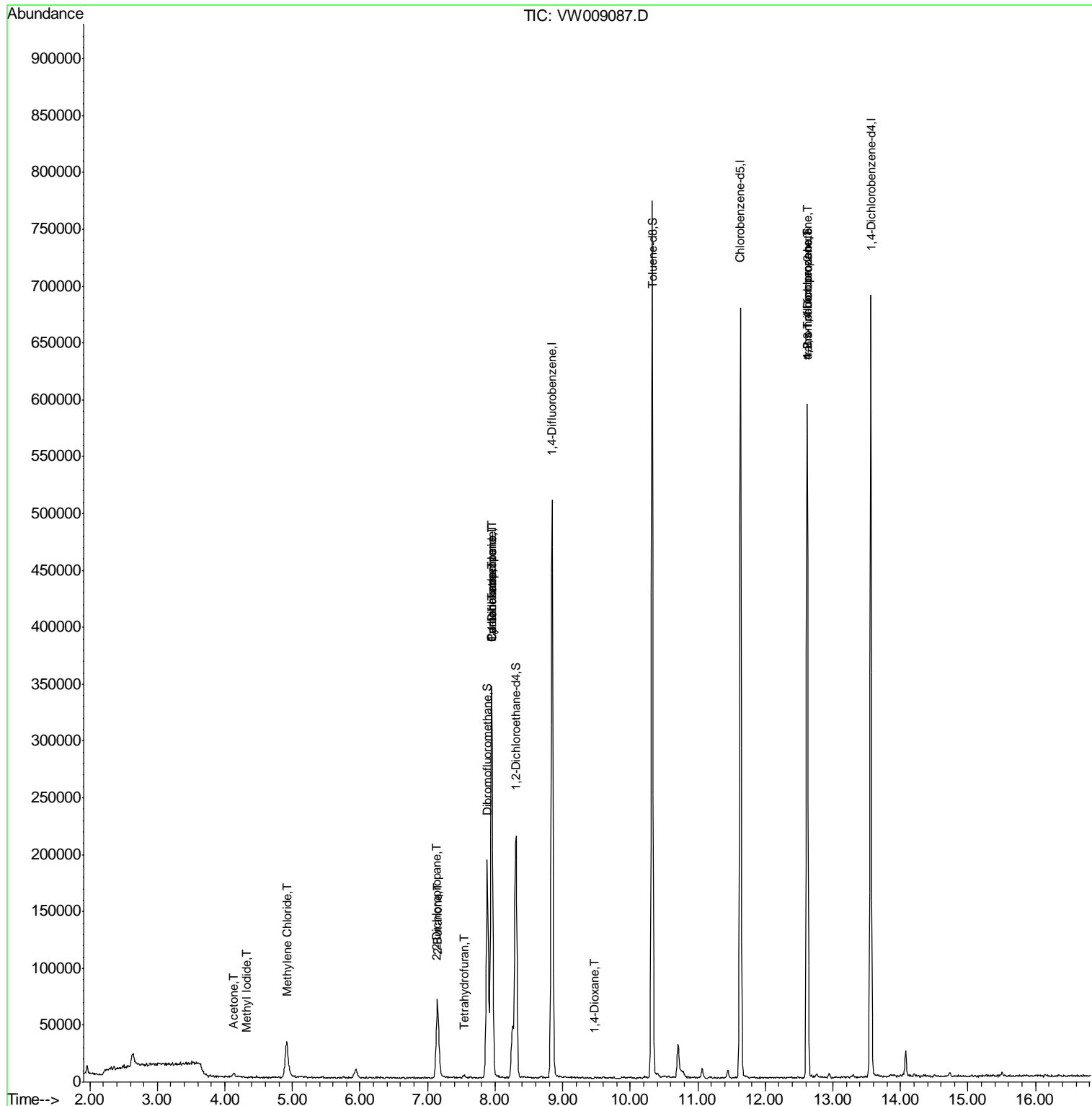
						Qvalue
10) Methyl Iodide	4.33	142	69	3.210	ug/l #	40
16) Acetone	4.14	43	6009	10.347	ug/l	94
20) Methylene Chloride	4.92	84	23913	3.732	ug/l #	91
25) 2-Butanone	7.14	43	4419	5.506	ug/l	96
26) 2,2-Dichloropropane	7.13	77	4725	1.112	ug/l #	55
29) Tetrahydrofuran	7.54	42	1540	3.045	ug/l #	78
31) Cyclohexane	7.95	56	6386	1.331	ug/l #	12
36) 1,1-Dichloropropene	7.95	75	20935	4.900	ug/l #	52
38) Carbon Tetrachloride	7.95	117	25205	5.713	ug/l #	17
49) 1,4-Dioxane	9.46	88	46	2.059	ug/l #	1
76) 1,2,3-Trichloropropane	12.62	75	90609	66.918	ug/l #	1
81) trans-1,4-Dichloro-2-buten	12.62	75	90609	149.677	ug/l #	5

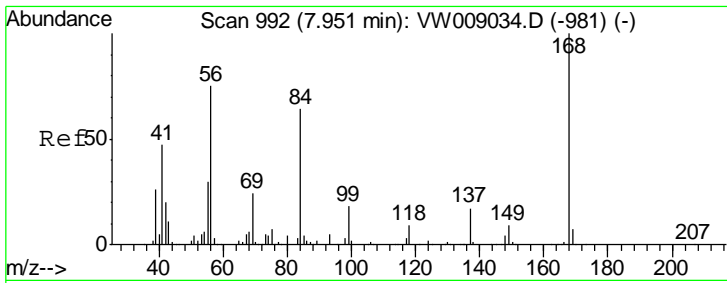
(#) = qualifier out of range (m) = manual integration (+) = signals summed

Data Path : Z:\VOASRV\HPCHEM1\MSVOA_W\DATA\VW031119\
 Data File : VW009087.D
 Acq On : 11 Mar 2019 15:31
 Operator : SY/VA
 Sample : K1837-05
 Misc : 6.52G/5ML/MSVOA_W/SOIL
 ALS Vial : 12 Sample Multiplier: 1

Instrument :
 MSVOA_W
Client SampleID :
 MR-MH-09-COMP

Quant Time: Mar 12 08:11:55 2019
 Quant Method : Z:\VOASRV\HPCHEM1\MSVOA_W\METHOD\82W030719S.M
 Quant Title : SW846 8260
 QLast Update : Fri Mar 08 05:22:30 2019
 Response via : Initial Calibration

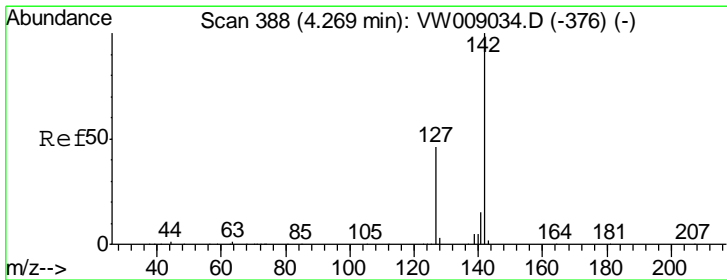
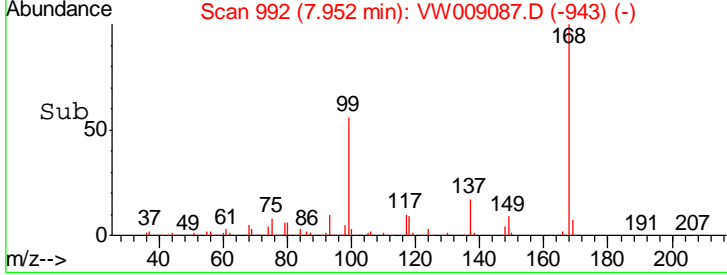
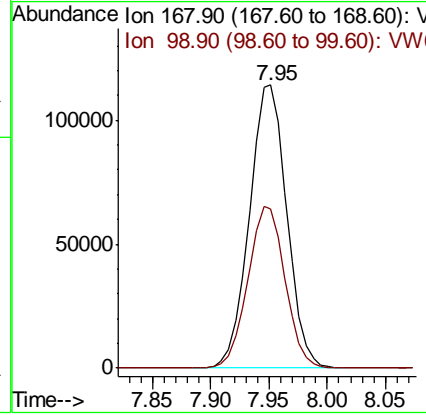
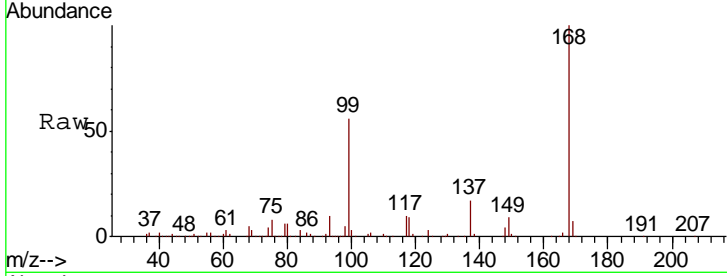




#1
 Pentafluorobenzene
 Concen: 50.000 ug/l
 RT: 7.95 min Scan# 992
 Delta R.T. 0.00 min
 Lab File: VW009087.D
 Acq: 11 Mar 2019 15:31

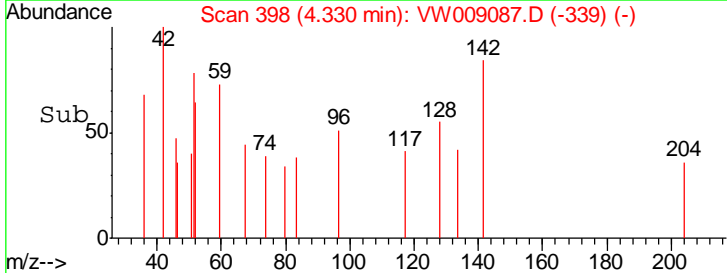
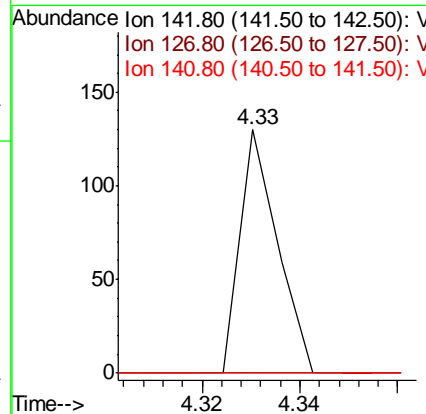
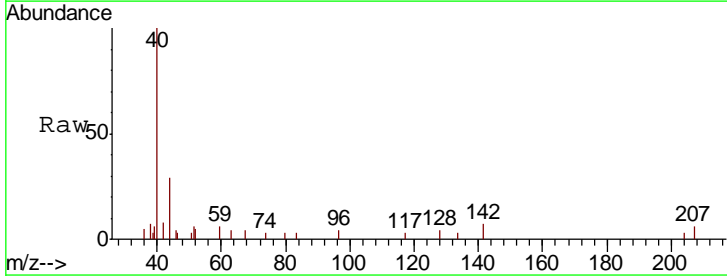
Instrument : MSVOA_W
 ClientSampleId : MR-MH-09-COMP

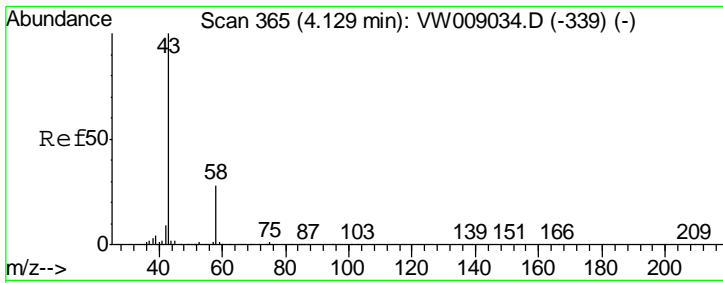
Tgt Ion	Resp	Lower	Upper
168	100		
99	56.2	42.2	63.2



#10
 Methyl Iodide
 Concen: 3.210 ug/l
 RT: 4.33 min Scan# 398
 Delta R.T. 0.06 min
 Lab File: VW009087.D
 Acq: 11 Mar 2019 15:31

Tgt Ion	Resp	Lower	Upper
142	100		
127	0.0	35.8	53.6#
141	0.0	11.8	17.8#

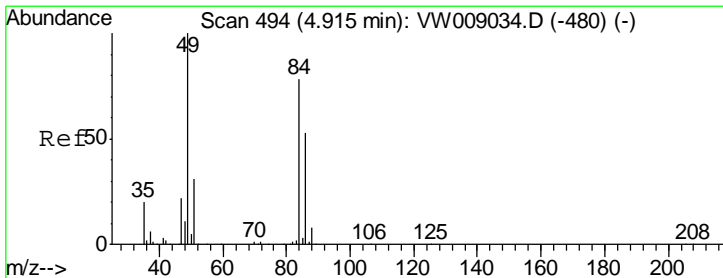
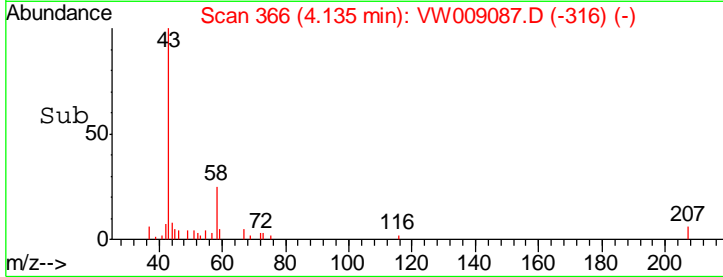
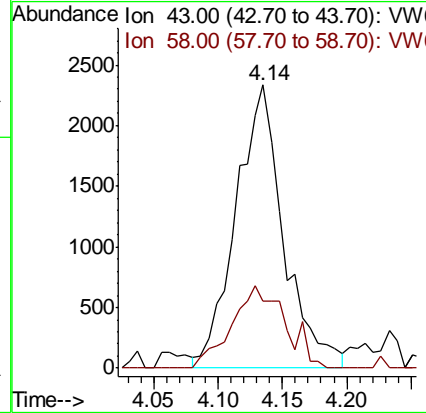
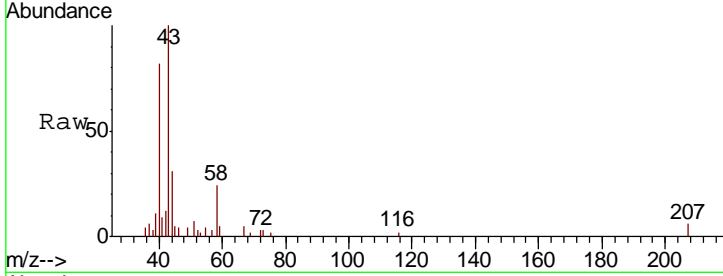




#16
 Acetone
 Concen: 10.347 ug/l
 RT: 4.14 min Scan# 366
 Delta R.T. 0.01 min
 Lab File: VW009087.D
 Acq: 11 Mar 2019 15:31

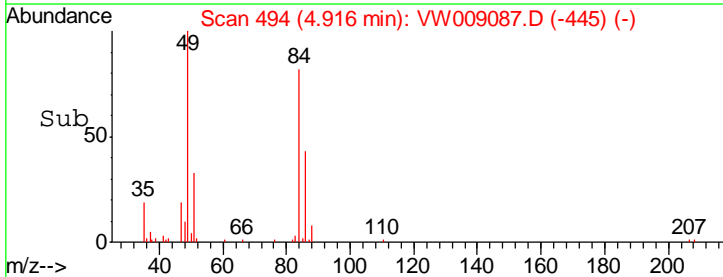
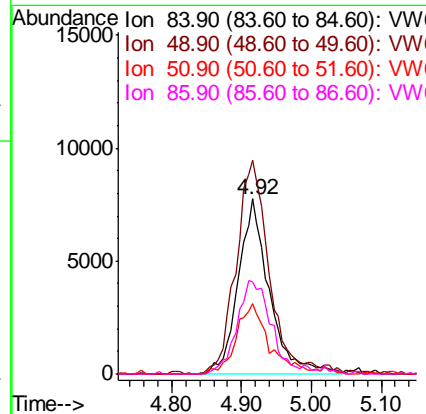
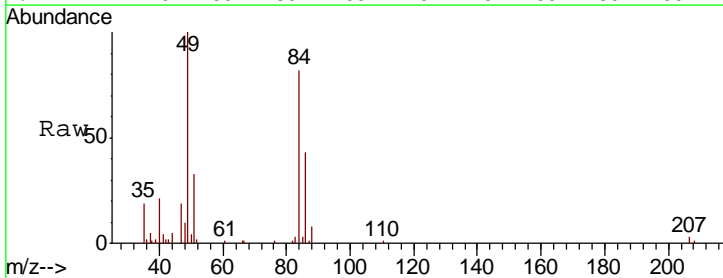
Instrument :
 MSVOA_W
 ClientSampled :
 MR-MH-09-COMP

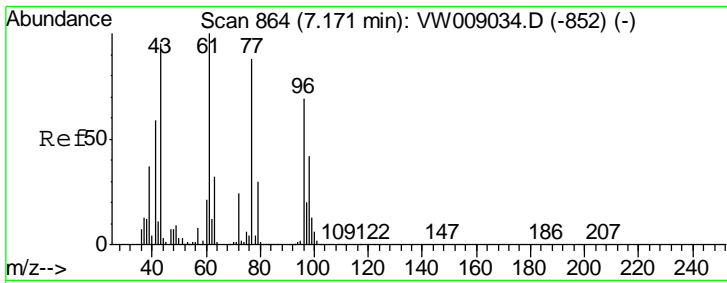
Tgt Ion	Resp	Lower	Upper
43	6009		
58	24.8	22.5	33.7



#20
 Methylene Chloride
 Concen: 3.732 ug/l
 RT: 4.92 min Scan# 494
 Delta R.T. 0.00 min
 Lab File: VW009087.D
 Acq: 11 Mar 2019 15:31

Tgt Ion	Resp	Lower	Upper
84	23913		
49	121.8	102.4	153.6
51	40.5	31.6	47.4
86	52.8	54.5	81.7#

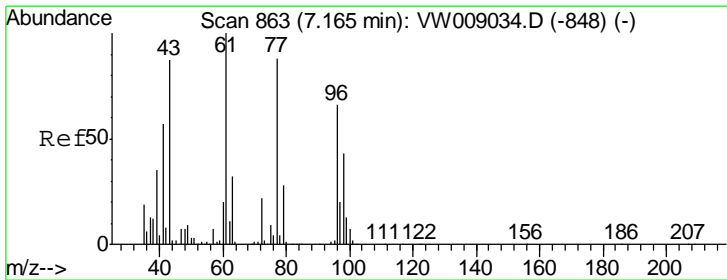
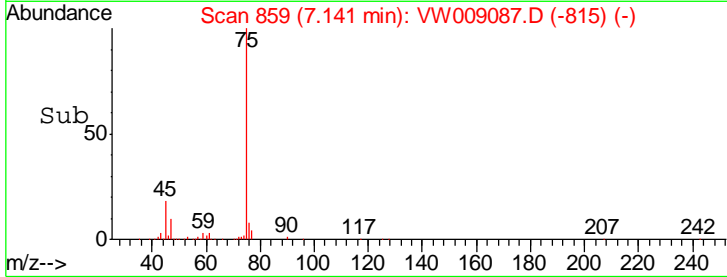
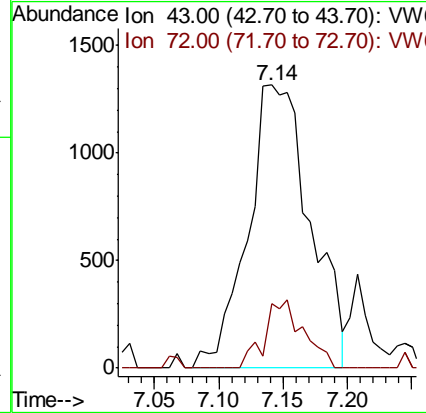
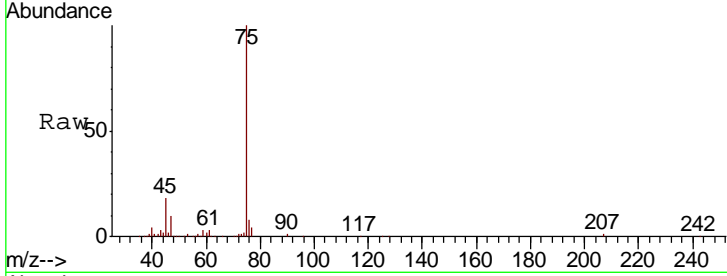




#25
 2-Butanone
 Concen: 5.506 ug/l
 RT: 7.14 min Scan# 859
 Delta R.T. -0.03 min
 Lab File: VW009087.D
 Acq: 11 Mar 2019 15:31

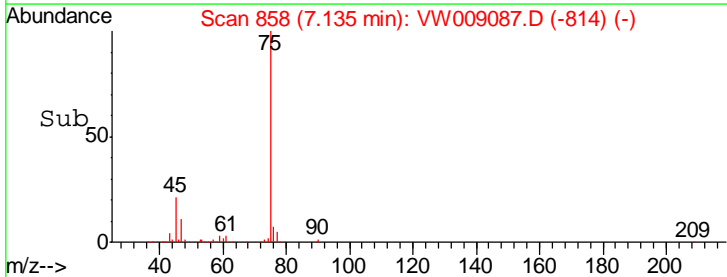
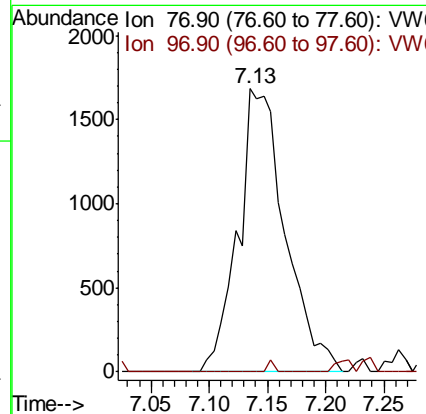
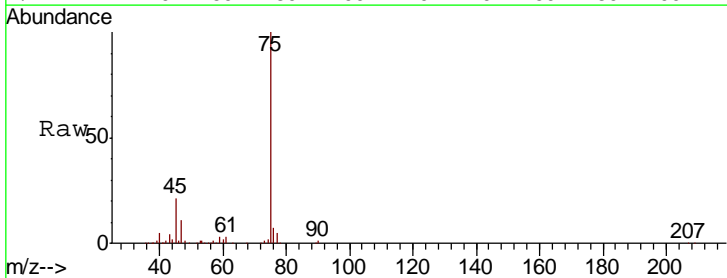
Instrument :
 MSVOA_W
 ClientSampled :
 MR-MH-09-COMP

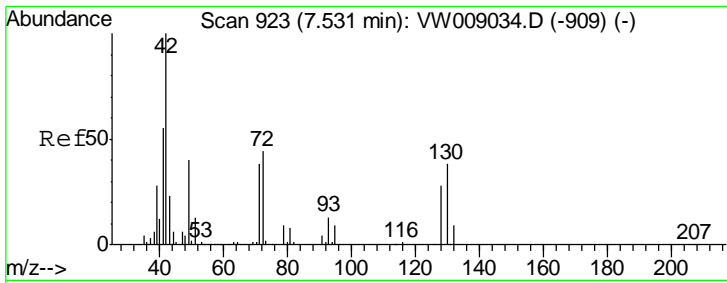
Tgt Ion: 43 Resp: 4419
 Ion Ratio Lower Upper
 43 100
 72 23.0 20.0 30.0



#26
 2,2-Dichloropropane
 Concen: 1.112 ug/l
 RT: 7.13 min Scan# 858
 Delta R.T. -0.03 min
 Lab File: VW009087.D
 Acq: 11 Mar 2019 15:31

Tgt Ion: 77 Resp: 4725
 Ion Ratio Lower Upper
 77 100
 97 0.6 10.9 32.9#

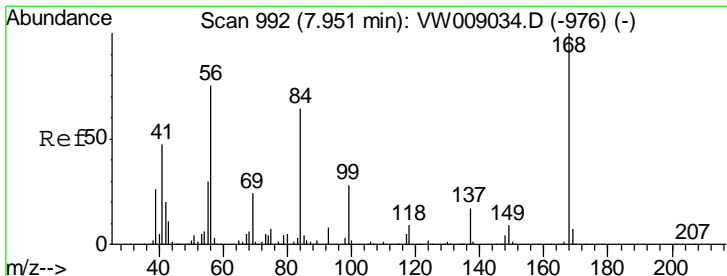
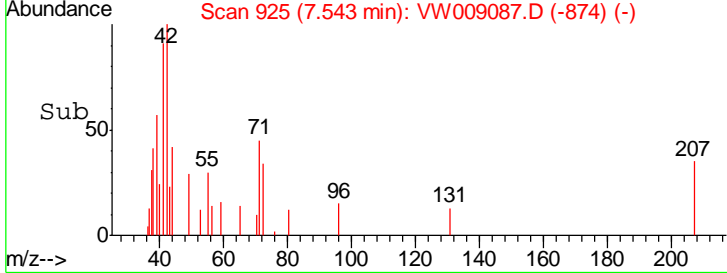
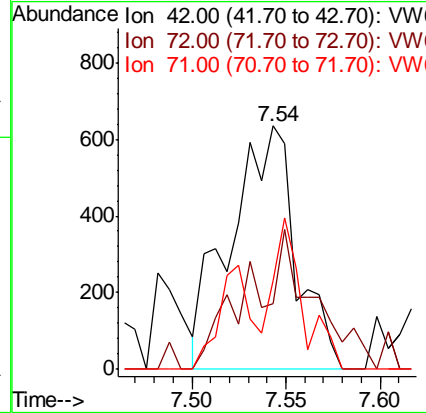
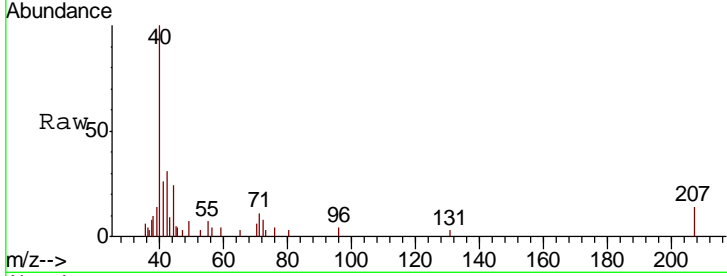




#29
 Tetrahydrofuran
 Concen: 3.045 ug/l
 RT: 7.54 min Scan# 925
 Delta R.T. 0.01 min
 Lab File: VW009087.D
 Acq: 11 Mar 2019 15:31

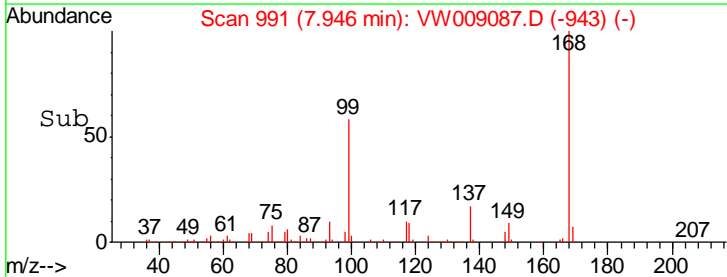
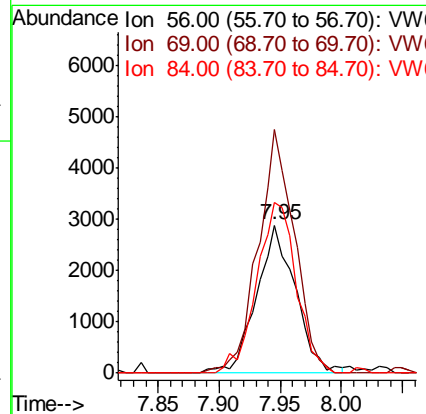
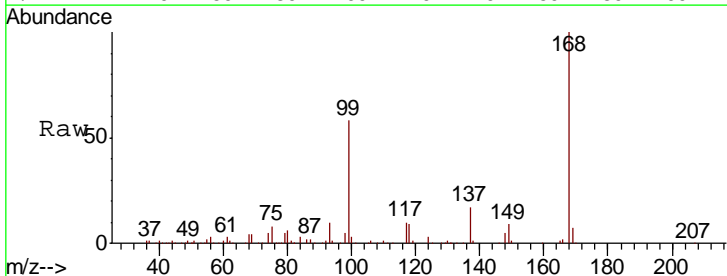
Instrument :
 MSVOA_W
 ClientSampled :
 MR-MH-09-COMP

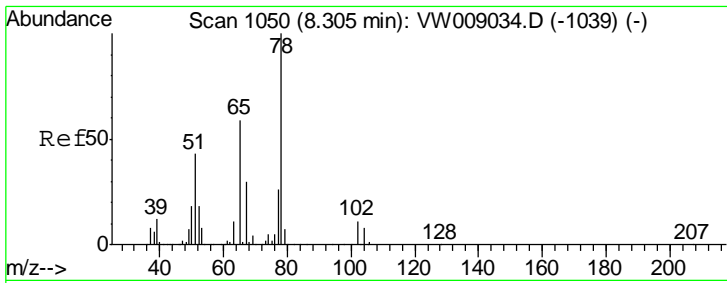
Tgt Ion	Resp	Lower	Upper
42	1540		
72	57.0	32.2	48.4#
71	27.8	30.7	46.1#



#31
 Cyclohexane
 Concen: 1.331 ug/l
 RT: 7.95 min Scan# 991
 Delta R.T. -0.01 min
 Lab File: VW009087.D
 Acq: 11 Mar 2019 15:31

Tgt Ion	Resp	Lower	Upper
56	6386		
69	164.7	25.5	38.3#
84	115.3	68.6	103.0#

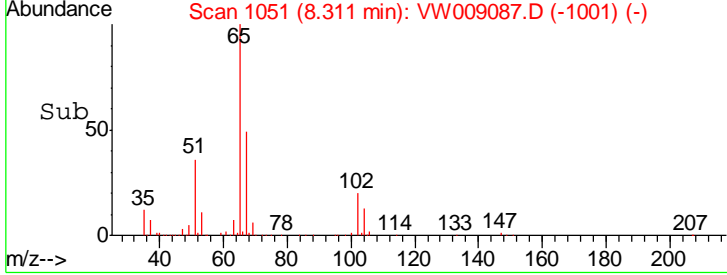
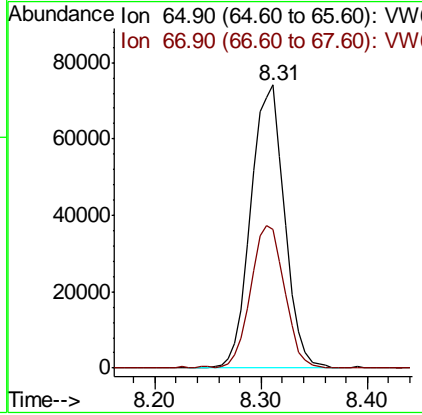
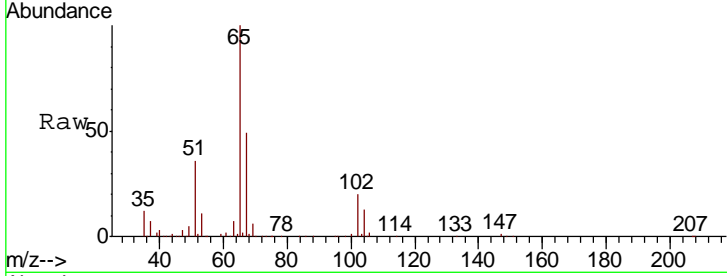




#33
 1,2-Dichloroethane-d4
 Concen: 64.083 ug/l
 RT: 8.31 min Scan# 1051
 Delta R.T. 0.01 min
 Lab File: VW009087.D
 Acq: 11 Mar 2019 15:31

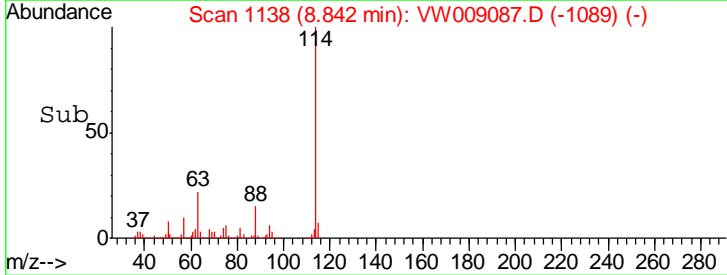
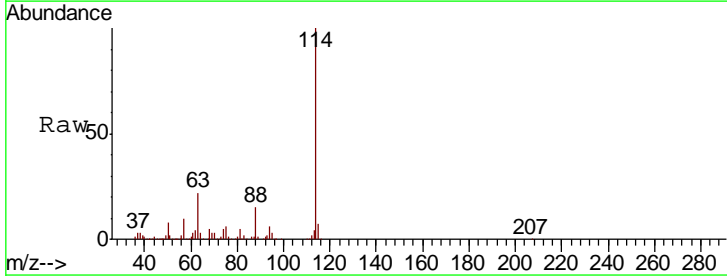
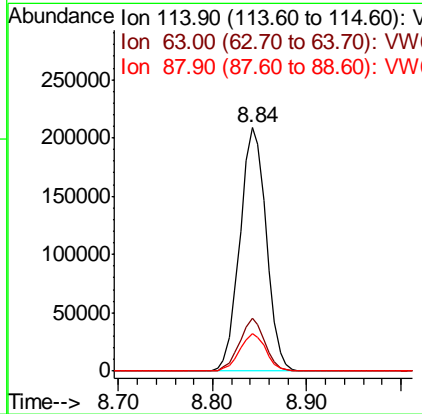
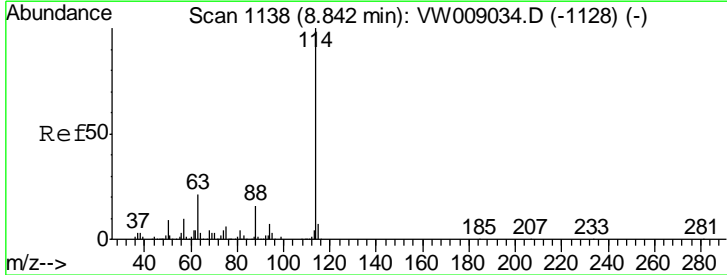
Instrument :
 MSVOA_W
ClientSampled :
 MR-MH-09-COMP

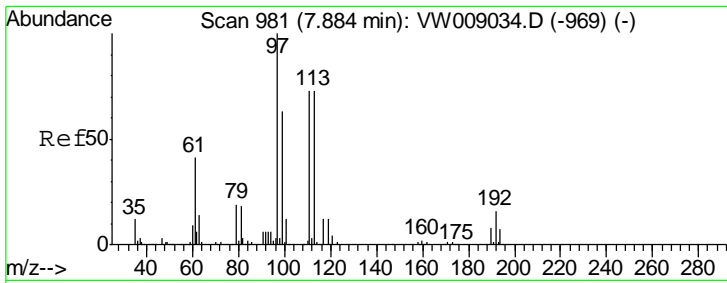
Tgt Ion: 65 Resp: 164925
 Ion Ratio Lower Upper
 65 100
 67 50.8 0.0 103.0



#34
 1,4-Difluorobenzene
 Concen: 50.000 ug/l
 RT: 8.84 min Scan# 1138
 Delta R.T. 0.00 min
 Lab File: VW009087.D
 Acq: 11 Mar 2019 15:31

Tgt Ion: 114 Resp: 408587
 Ion Ratio Lower Upper
 114 100
 63 21.7 0.0 41.2
 88 15.2 0.0 31.2

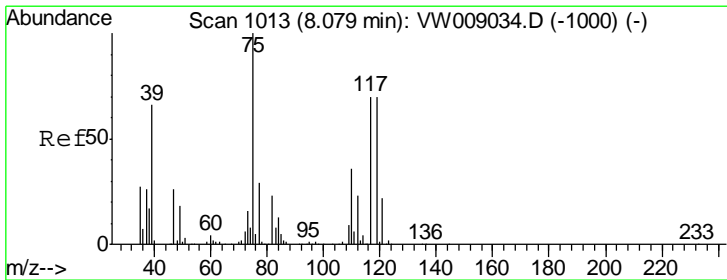
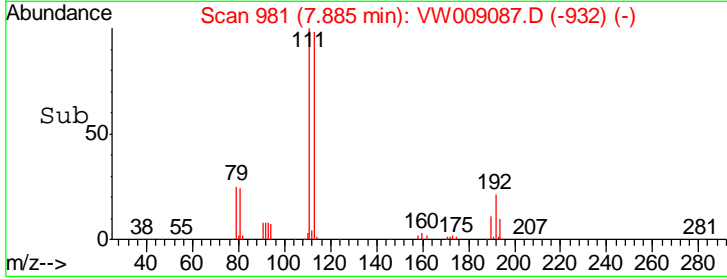
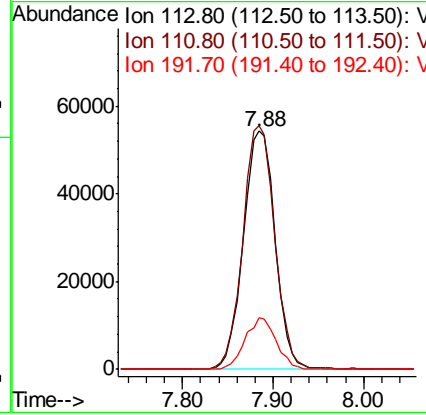
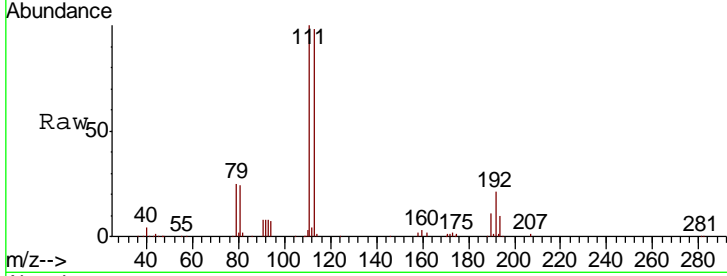




#35
 Dibromofluoromethane
 Concen: 53.470 ug/l
 RT: 7.88 min Scan# 981
 Delta R.T. 0.00 min
 Lab File: VW009087.D
 Acq: 11 Mar 2019 15:31

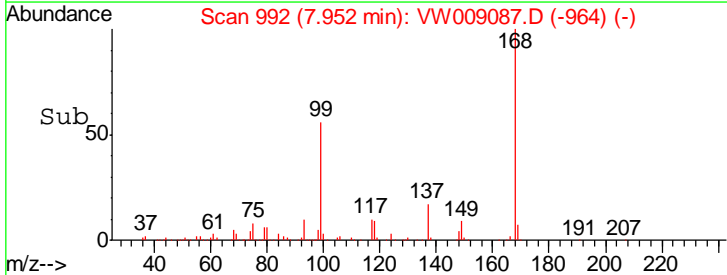
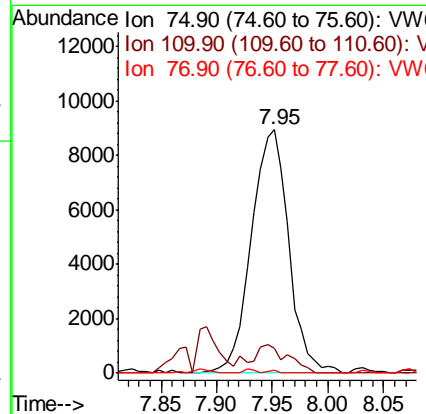
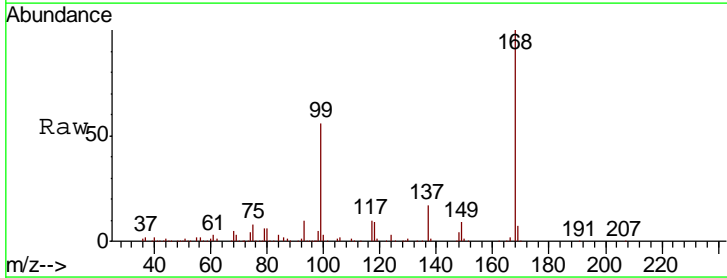
Instrument :
 MSVOA_W
 ClientSampled :
 MR-MH-09-COMP

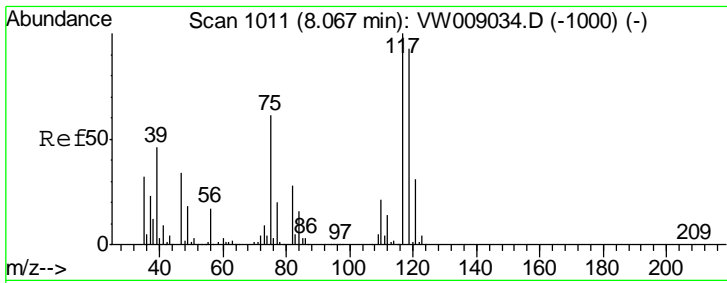
Tgt Ion	Resp	Lower	Upper
113	100		
111	102.6	81.0	121.4
192	21.0	17.1	25.7



#36
 1,1-Dichloropropene
 Concen: 4.900 ug/l
 RT: 7.95 min Scan# 992
 Delta R.T. -0.13 min
 Lab File: VW009087.D
 Acq: 11 Mar 2019 15:31

Tgt Ion	Resp	Lower	Upper
75	100		
110	11.3	17.6	52.9#
77	0.4	25.1	37.7#

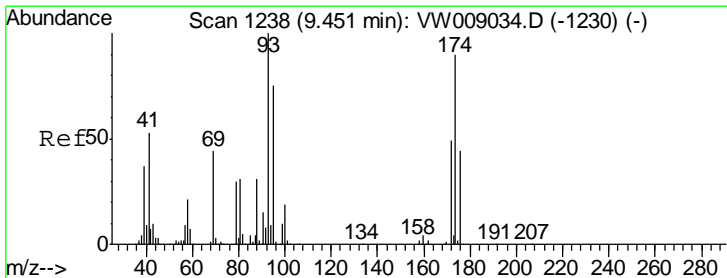
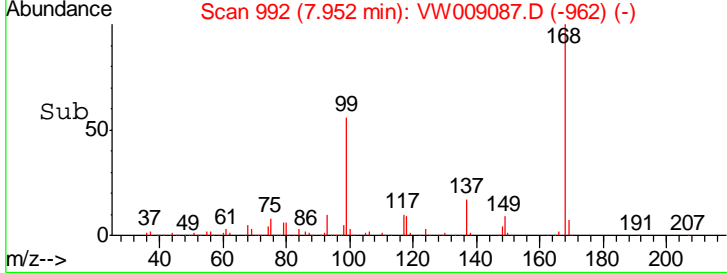
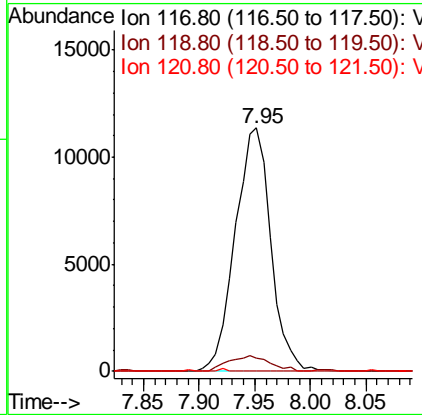
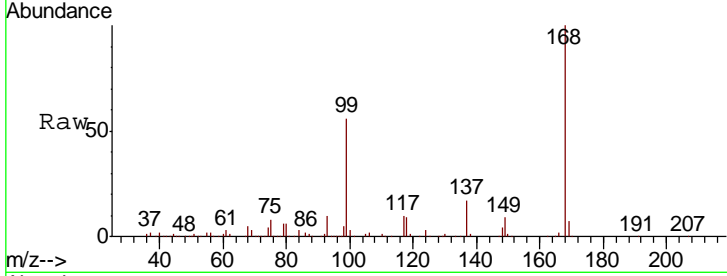




#38
 Carbon Tetrachloride
 Concen: 5.713 ug/l
 RT: 7.95 min Scan# 992
 Delta R.T. -0.12 min
 Lab File: VW009087.D
 Acq: 11 Mar 2019 15:31

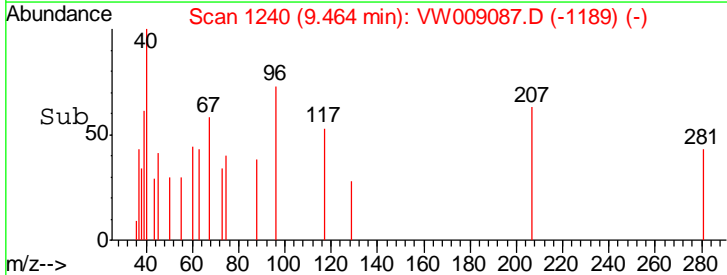
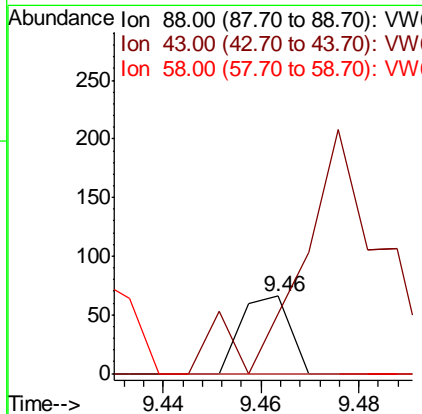
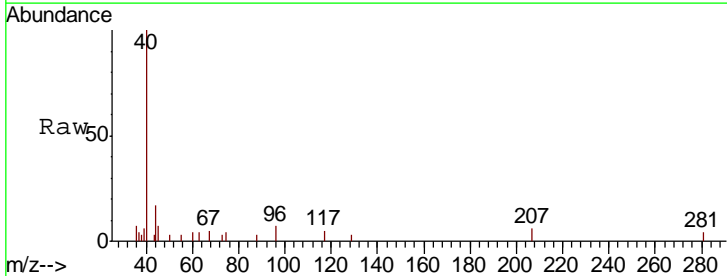
Instrument :
 MSVOA_W
 ClientSampled :
 MR-MH-09-COMP

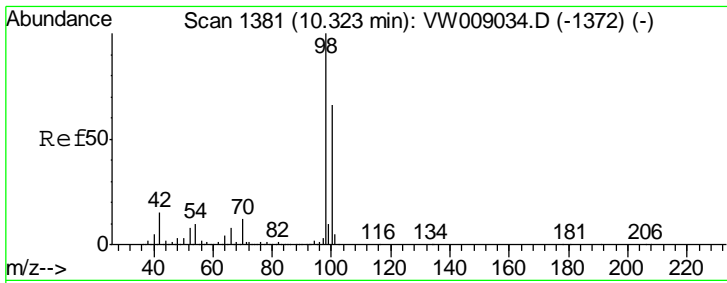
Tgt Ion	Resp	Lower	Upper
117	100		
119	5.2	74.6	112.0#
121	0.0	24.7	37.1#



#49
 1,4-Dioxane
 Concen: 2.059 ug/l
 RT: 9.46 min Scan# 1240
 Delta R.T. 0.01 min
 Lab File: VW009087.D
 Acq: 11 Mar 2019 15:31

Tgt Ion	Resp	Lower	Upper
88	100		
43	497.8	29.0	43.4#
58	0.0	59.2	88.8#

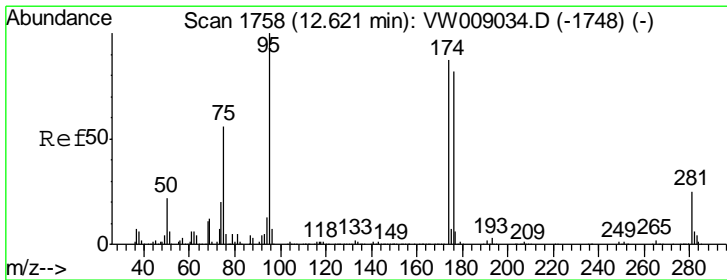
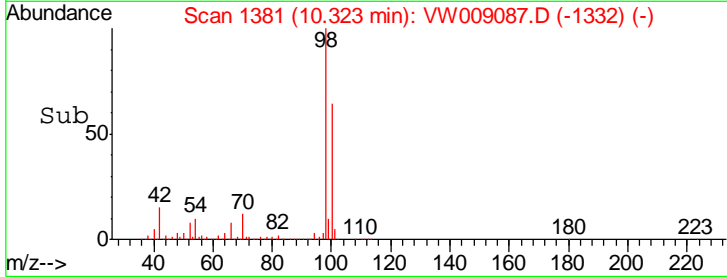
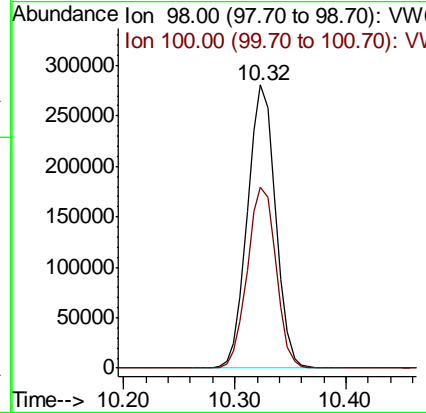
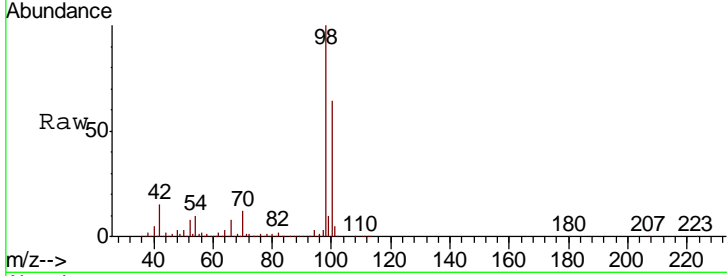




#50
 Toluene-d8
 Concen: 48.657 ug/l
 RT: 10.32 min Scan# 1381
 Delta R.T. 0.00 min
 Lab File: VW009087.D
 Acq: 11 Mar 2019 15:31

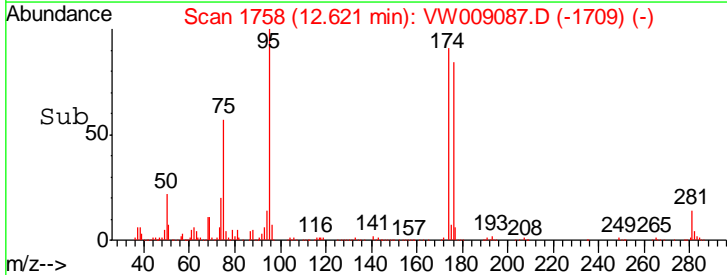
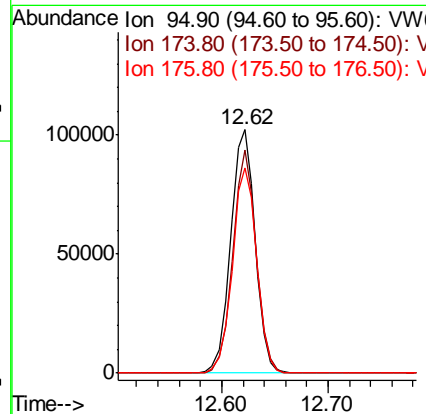
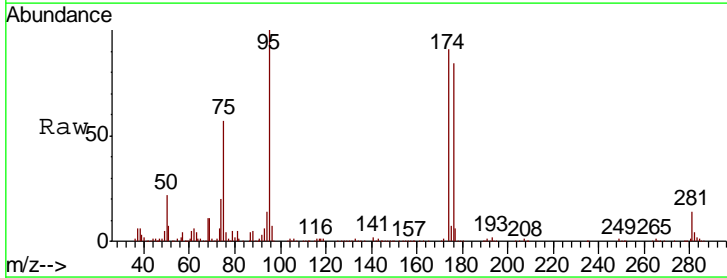
Instrument :
 MSVOA_W
 ClientSampled :
 MR-MH-09-COMP

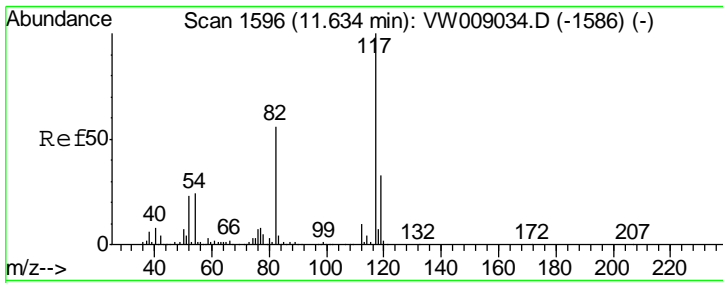
Tgt Ion: 98 Resp: 491621
 Ion Ratio Lower Upper
 98 100
 100 65.4 51.9 77.9



#62
 4-Bromofluorobenzene
 Concen: 41.362 ug/l
 RT: 12.62 min Scan# 1758
 Delta R.T. 0.00 min
 Lab File: VW009087.D
 Acq: 11 Mar 2019 15:31

Tgt Ion: 95 Resp: 164515
 Ion Ratio Lower Upper
 95 100
 174 87.8 0.0 167.0
 176 83.4 0.0 159.4

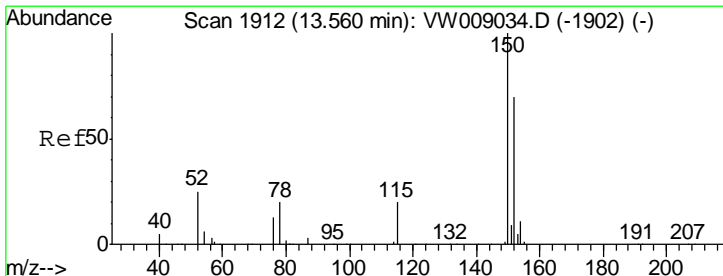
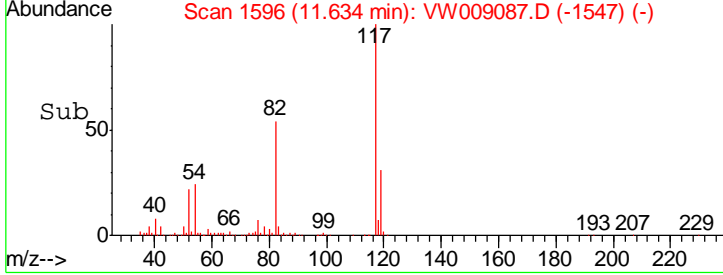
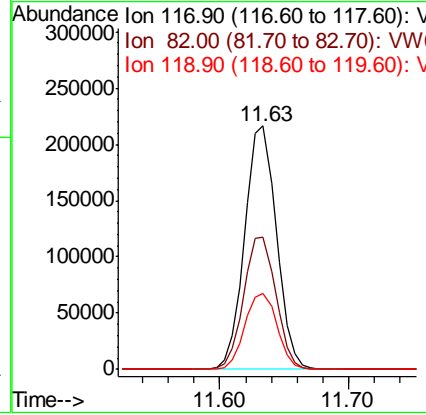
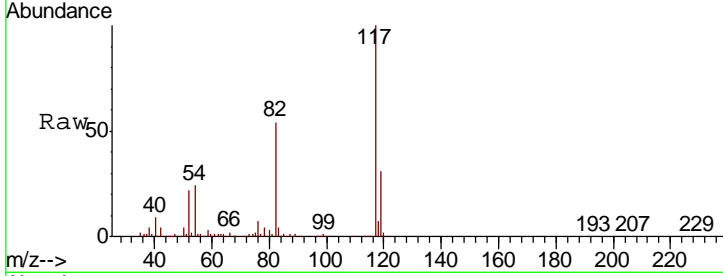




#63
 Chlorobenzene-d5
 Concen: 50.000 ug/l
 RT: 11.63 min Scan# 1596
 Delta R.T. 0.00 min
 Lab File: VW009087.D
 Acq: 11 Mar 2019 15:31

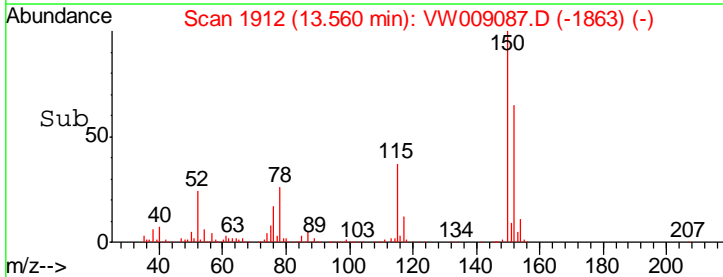
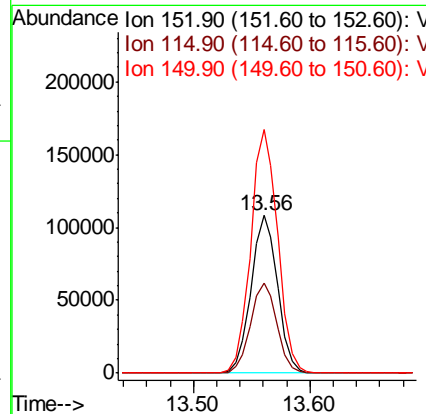
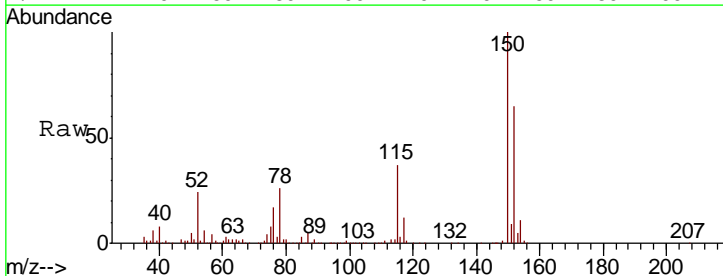
Instrument : MSVOA_W
 ClientSampleId : MR-MH-09-COMP

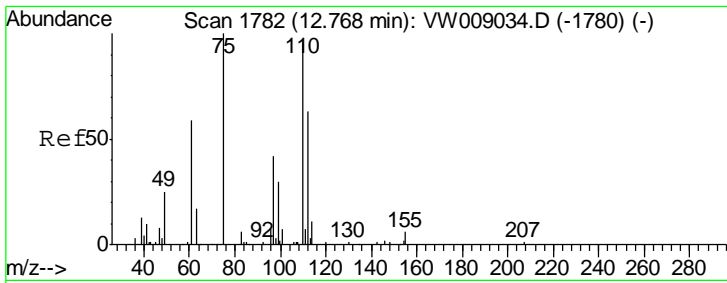
Tgt Ion	Resp	Lower	Upper
117	368145		
82	54.4	45.0	67.6
119	31.0	26.6	39.8



#72
 1,4-Dichlorobenzene-d4
 Concen: 50.000 ug/l
 RT: 13.56 min Scan# 1912
 Delta R.T. 0.00 min
 Lab File: VW009087.D
 Acq: 11 Mar 2019 15:31

Tgt Ion	Resp	Lower	Upper
152	171379		
115	57.1	28.9	86.7
150	156.9	0.0	349.2

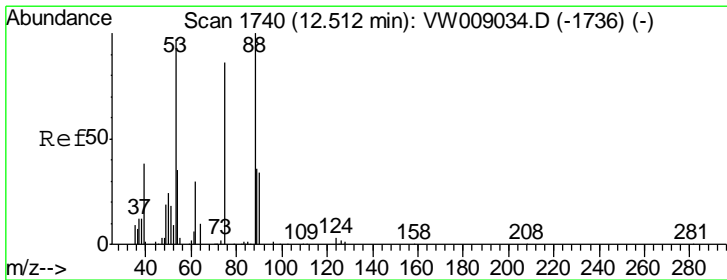
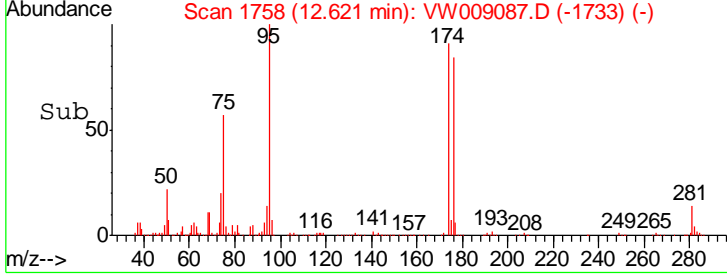
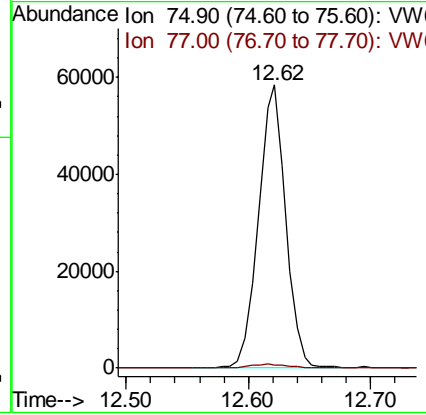
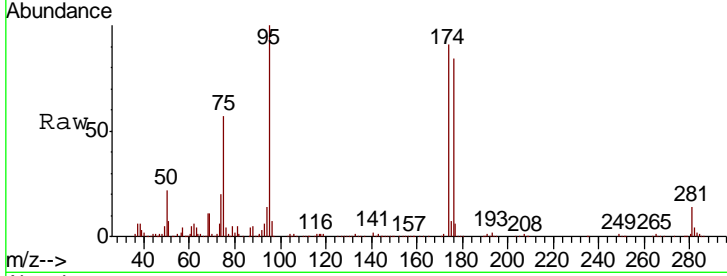




#76
 1,2,3-Trichloropropane
 Concen: 66.918 ug/l
 RT: 12.62 min Scan# 1758
 Delta R.T. -0.15 min
 Lab File: VW009087.D
 Acq: 11 Mar 2019 15:31

Instrument : MSVOA_W
 ClientSampled : MR-MH-09-COMP

Tgt Ion: 75 Resp: 90609
 Ion Ratio Lower Upper
 75 100
 77 1.9 186.7 560.0#



#81
 trans-1,4-Dichloro-2-butene
 Concen: 149.677 ug/l
 RT: 12.62 min Scan# 1758
 Delta R.T. 0.11 min
 Lab File: VW009087.D
 Acq: 11 Mar 2019 15:31

Tgt Ion: 75 Resp: 90609
 Ion Ratio Lower Upper
 75 100
 53 0.6 90.5 135.7#
 89 0.3 37.5 56.3#

