

Data Path : Z:\VOASRV\HPCHEM1\MSVOA_W\DATA\VW031119\
 Data File : VW009116.D
 Acq On : 12 Mar 2019 06:12
 Operator : SY/VA
 Sample : K1847-10
 Misc : 8.91G/5ML/MSVOA_W/SOIL
 ALS Vial : 45 Sample Multiplier: 1

Instrument :
 MSVOA_W
ClientSampleId :
 SUP-7B-G-10-031119

Quant Time: Mar 12 08:20:28 2019
 Quant Method : Z:\VOASRV\HPCHEM1\MSVOA_W\METHOD\82W030719S.M
 Quant Title : SW846 8260
 QLast Update : Fri Mar 08 05:22:30 2019
 Response via : Initial Calibration

Internal Standards	R.T.	QIon	Response	Conc	Units	Dev(Min)
1) Pentafluorobenzene	7.95	168	218982	50.00	ug/l	0.00
34) 1,4-Difluorobenzene	8.84	114	348309	50.00	ug/l	0.00
63) Chlorobenzene-d5	11.63	117	302674	50.00	ug/l	0.00
72) 1,4-Dichlorobenzene-d4	13.56	152	119924	50.00	ug/l	0.00

System Monitoring Compounds

33) 1,2-Dichloroethane-d4	8.31	65	126763	57.54	ug/l	0.00
Spiked Amount				50.000		
			Recovery	=	115.08%	
35) Dibromofluoromethane	7.88	113	104430	49.80	ug/l	0.00
Spiked Amount				50.000		
			Recovery	=	99.60%	
50) Toluene-d8	10.32	98	417029	48.42	ug/l	0.00
Spiked Amount				50.000		
			Recovery	=	96.84%	
62) 4-Bromofluorobenzene	12.62	95	127651	37.65	ug/l	0.00
Spiked Amount				50.000		
			Recovery	=	75.30%	

Target Compounds

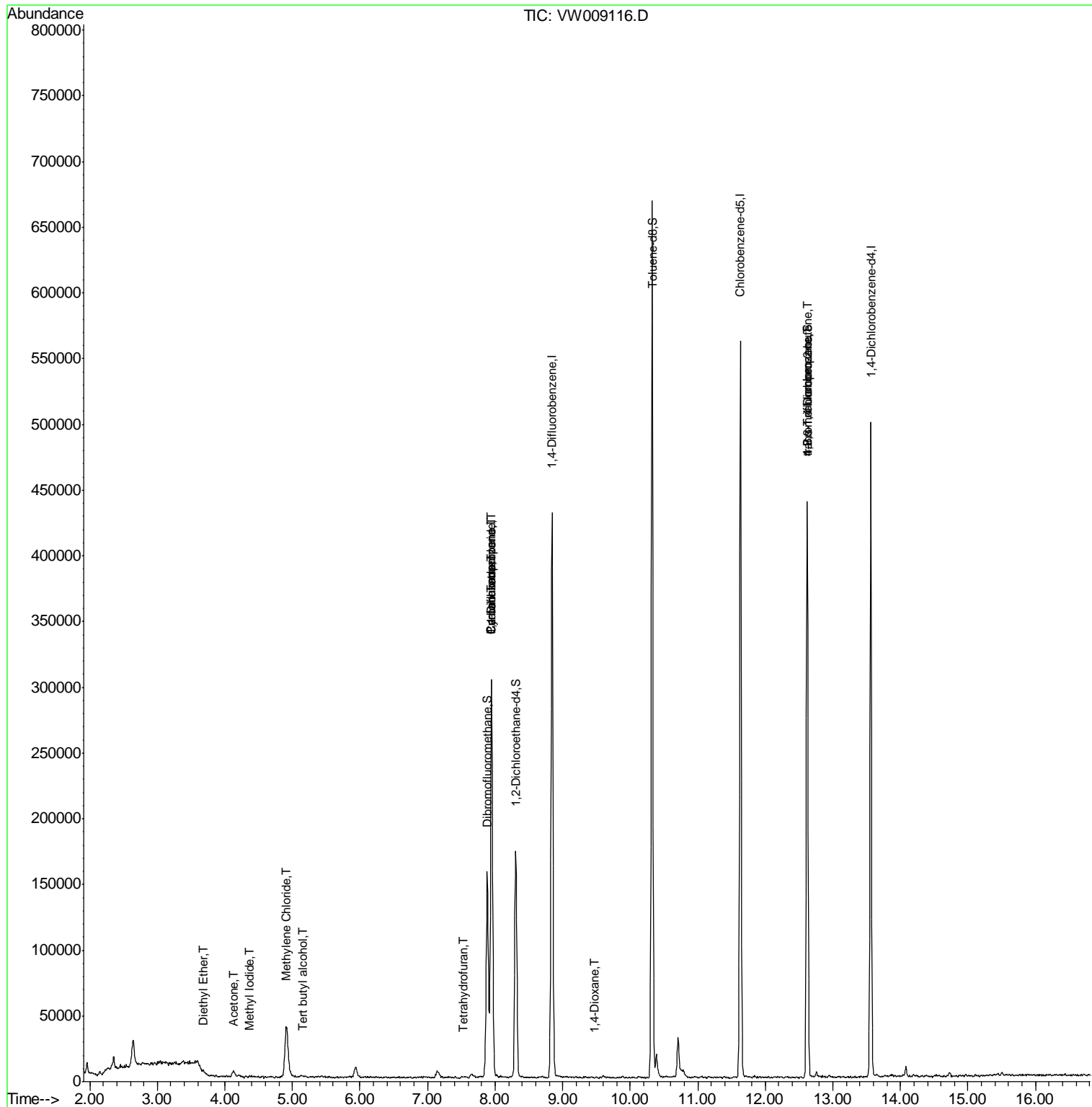
						Qvalue
8) Diethyl Ether	3.68	74	1725	1.540	ug/l	80
10) Methyl Iodide	4.36	142	41	3.203	ug/l #	40
11) Tert butyl alcohol	5.15	59	1058	6.267	ug/l #	78
16) Acetone	4.13	43	8651	17.401	ug/l	94
20) Methylene Chloride	4.91	84	30679	8.628	ug/l	96
29) Tetrahydrofuran	7.52	42	964	2.226	ug/l #	47
31) Cyclohexane	7.95	56	5950	1.448	ug/l #	40
36) 1,1-Dichloropropene	7.95	75	17913	4.918	ug/l #	50
38) Carbon Tetrachloride	7.95	117	22243	5.914	ug/l #	18
49) 1,4-Dioxane	9.48	88	54	2.836	ug/l #	41
76) 1,2,3-Trichloropropane	12.62	75	69319	73.160	ug/l #	1
81) trans-1,4-Dichloro-2-buten	12.62	75	69319	163.640	ug/l #	5

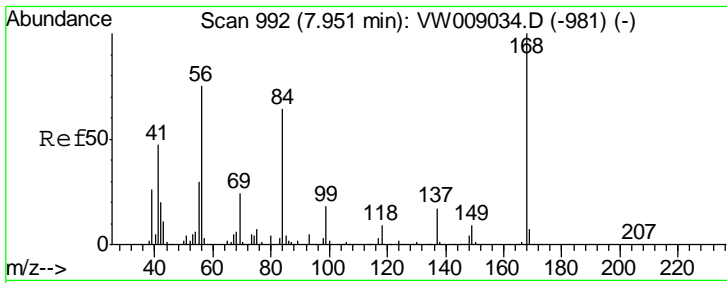
(#) = qualifier out of range (m) = manual integration (+) = signals summed

Data Path : Z:\VOASRV\HPCHEM1\MSVOA_W\DATA\VW031119\
 Data File : VW009116.D
 Acq On : 12 Mar 2019 06:12
 Operator : SY/VA
 Sample : K1847-10
 Misc : 8.91G/5ML/MSVOA_W/SOIL
 ALS Vial : 45 Sample Multiplier: 1

Instrument :
 MSVOA_W
 ClientSampleId :
 SUP-7B-G-10-031119

Quant Time: Mar 12 08:20:28 2019
 Quant Method : Z:\VOASRV\HPCHEM1\MSVOA_W\METHOD\82W030719S.M
 Quant Title : SW846 8260
 QLast Update : Fri Mar 08 05:22:30 2019
 Response via : Initial Calibration

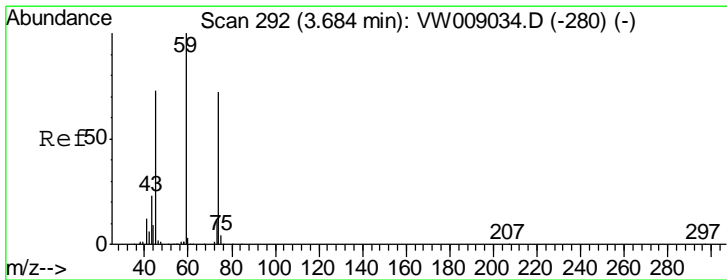
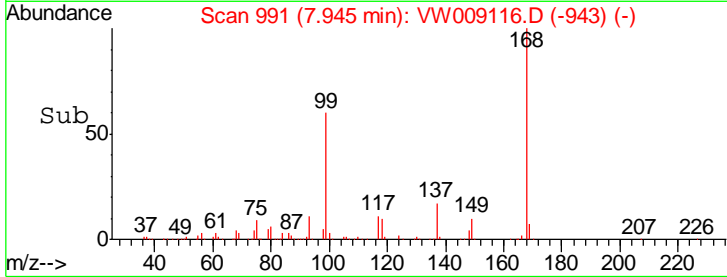
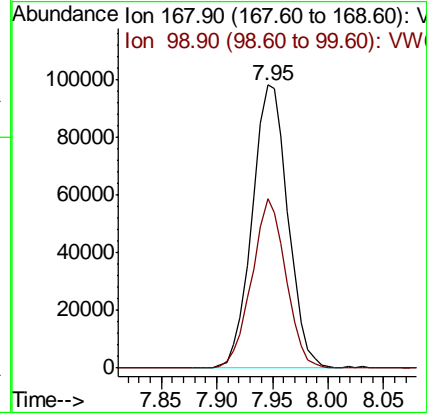
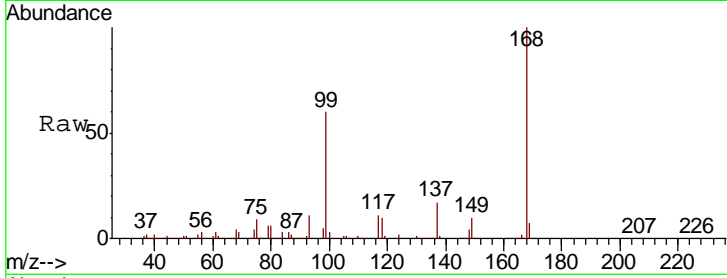




#1
 Pentafluorobenzene
 Concen: 50.000 ug/l
 RT: 7.95 min Scan# 991
 Delta R.T. -0.01 min
 Lab File: VW009116.D
 Acq: 12 Mar 2019 06:12

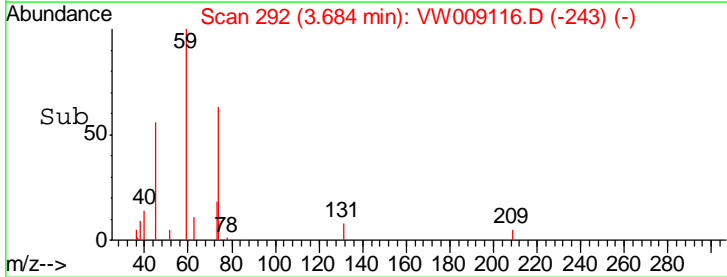
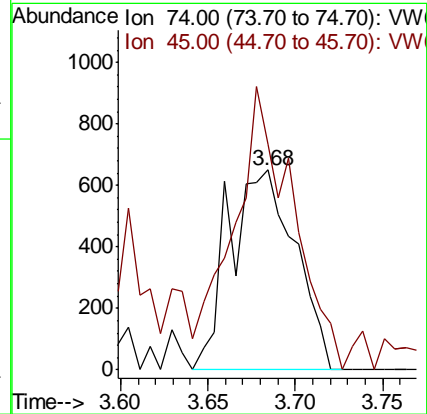
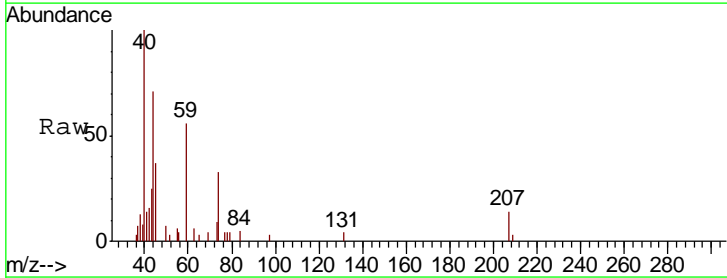
Instrument :
 MSVOA_W
 ClientSampleId :
 SUP-7B-G-10-031119

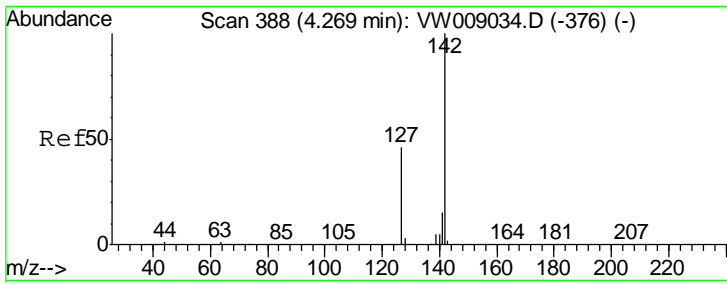
Tgt Ion: 168 Resp: 218982
 Ion Ratio Lower Upper
 168 100
 99 59.8 42.2 63.2



#8
 Diethyl Ether
 Concen: 1.540 ug/l
 RT: 3.68 min Scan# 292
 Delta R.T. 0.00 min
 Lab File: VW009116.D
 Acq: 12 Mar 2019 06:12

Tgt Ion: 74 Resp: 1725
 Ion Ratio Lower Upper
 74 100
 45 125.6 52.3 157.1

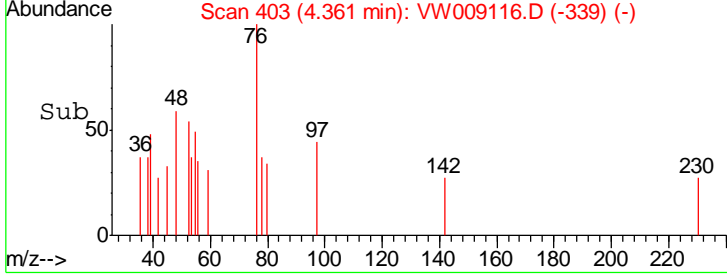
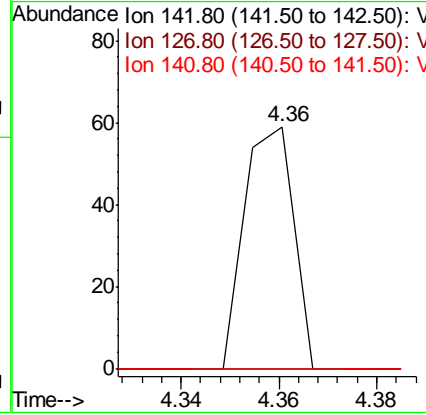
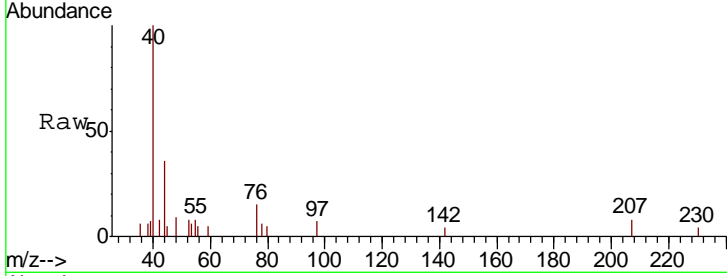




#10
 Methyl Iodide
 Concen: 3.203 ug/l
 RT: 4.36 min Scan# 403
 Delta R.T. 0.09 min
 Lab File: VW009116.D
 Acq: 12 Mar 2019 06:12

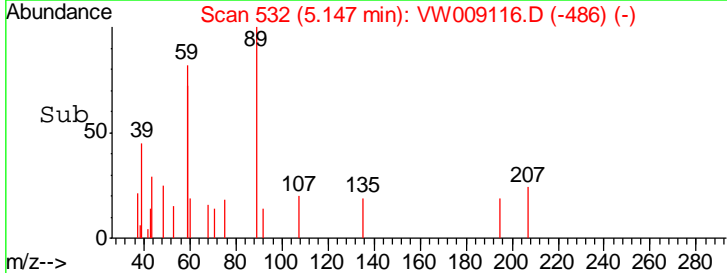
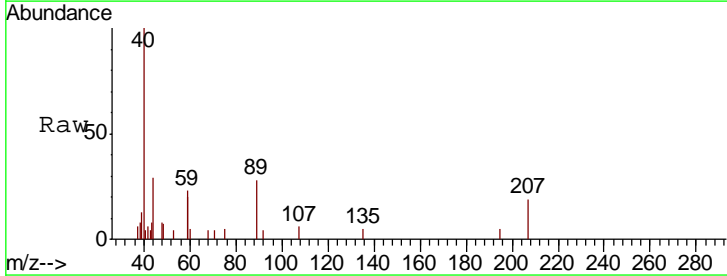
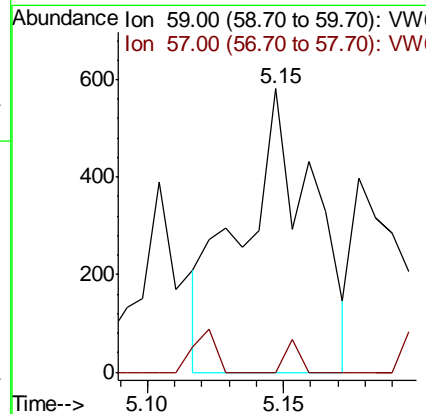
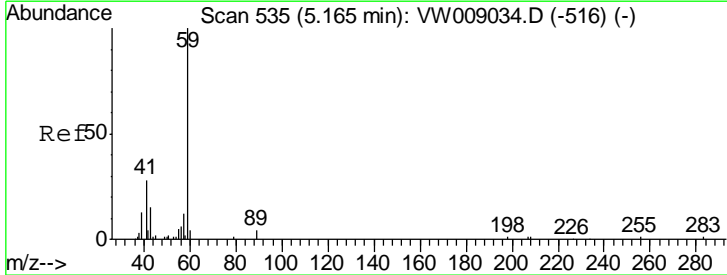
Instrument :
 MSVOA_W
ClientSampled :
 SUP-7B-G-10-031119

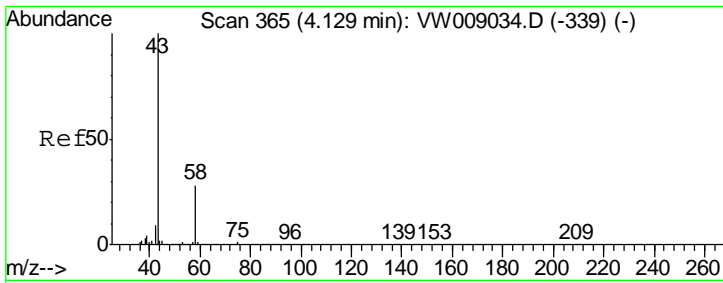
Tgt Ion	Ratio	Lower	Upper
142	100		
127	0.0	35.8	53.6#
141	0.0	11.8	17.8#



#11
 Tert butyl alcohol
 Concen: 6.267 ug/l
 RT: 5.15 min Scan# 532
 Delta R.T. -0.02 min
 Lab File: VW009116.D
 Acq: 12 Mar 2019 06:12

Tgt Ion	Ratio	Lower	Upper
59	100		
57	2.3	8.6	12.8#

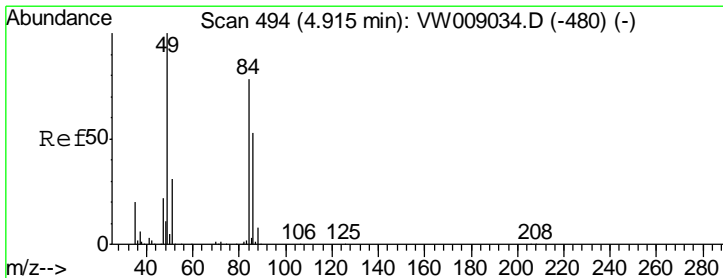
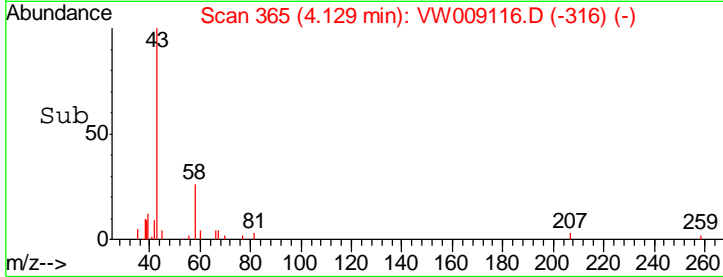
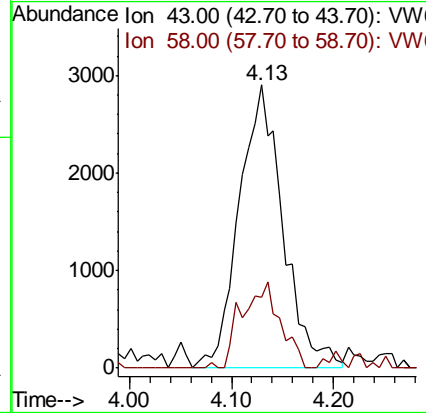
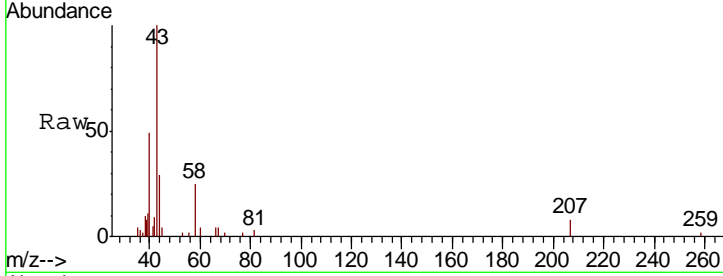




#16
 Acetone
 Concen: 17.401 ug/l
 RT: 4.13 min Scan# 365
 Delta R.T. 0.00 min
 Lab File: VW009116.D
 Acq: 12 Mar 2019 06:12

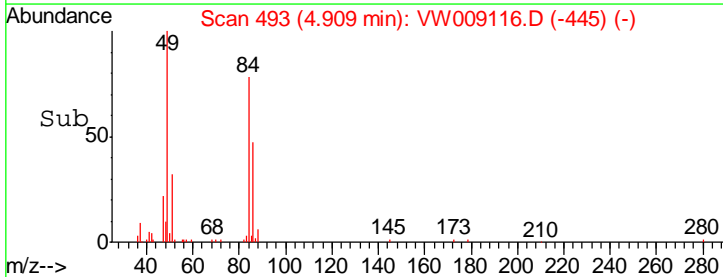
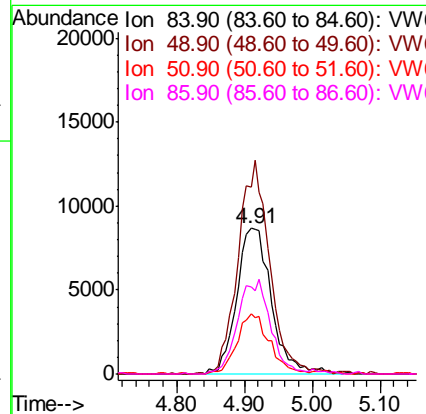
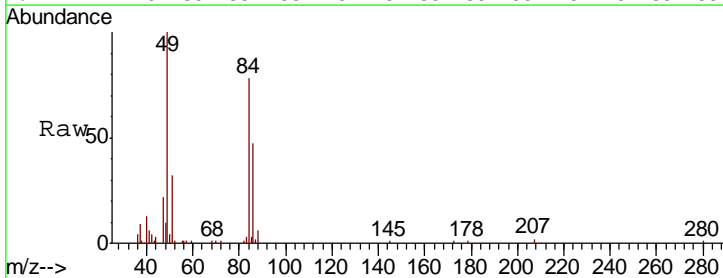
Instrument :
 MSVOA_W
 ClientSampled :
 SUP-7B-G-10-031119

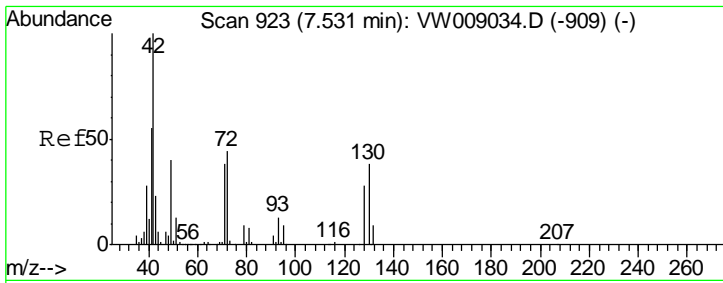
Tgt Ion	Resp	Lower	Upper
43	100		
58	24.9	22.5	33.7



#20
 Methylene Chloride
 Concen: 8.628 ug/l
 RT: 4.91 min Scan# 493
 Delta R.T. -0.01 min
 Lab File: VW009116.D
 Acq: 12 Mar 2019 06:12

Tgt Ion	Resp	Lower	Upper
84	100		
49	127.8	102.4	153.6
51	41.4	31.6	47.4
86	59.6	54.5	81.7

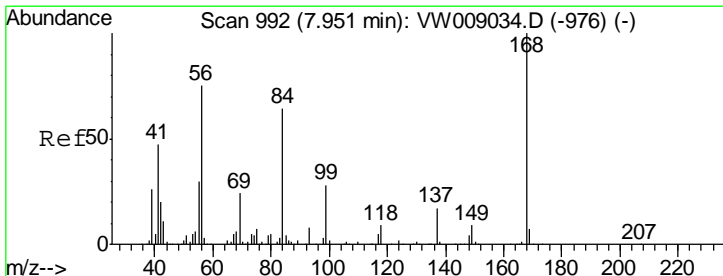
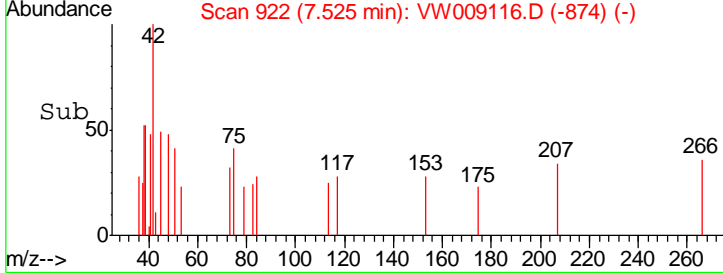
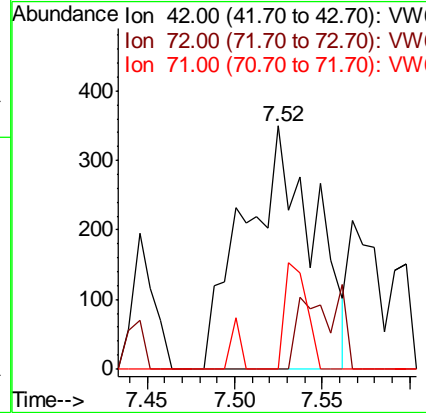
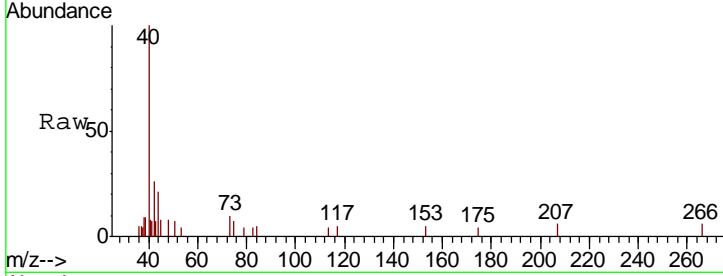




#29
 Tetrahydrofuran
 Concen: 2.226 ug/l
 RT: 7.52 min Scan# 922
 Delta R.T. -0.01 min
 Lab File: VW009116.D
 Acq: 12 Mar 2019 06:12

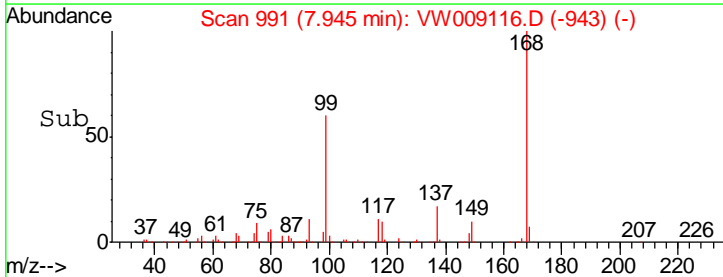
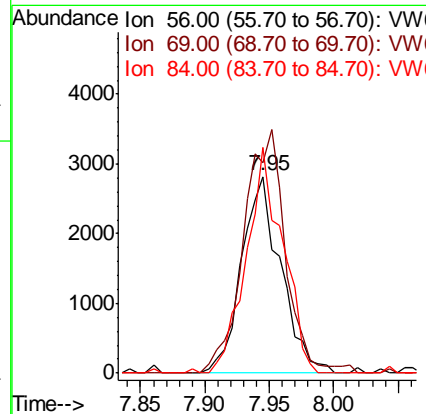
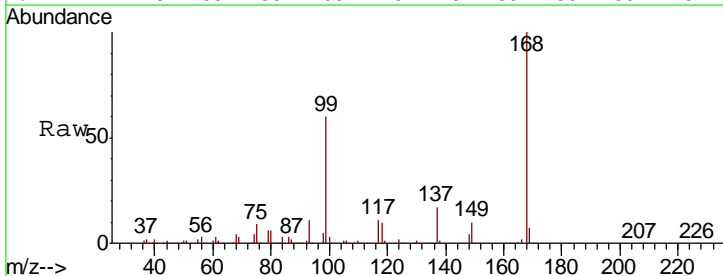
Instrument :
 MSVOA_W
 ClientSampled :
 SUP-7B-G-10-031119

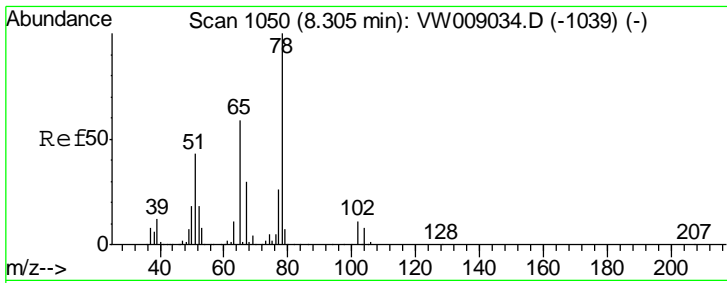
Tgt Ion	Resp	Lower	Upper
42	100		
72	0.0	32.2	48.4#
71	13.8	30.7	46.1#



#31
 Cyclohexane
 Concen: 1.448 ug/l
 RT: 7.95 min Scan# 991
 Delta R.T. -0.01 min
 Lab File: VW009116.D
 Acq: 12 Mar 2019 06:12

Tgt Ion	Resp	Lower	Upper
56	100		
69	107.1	25.5	38.3#
84	114.6	68.6	103.0#

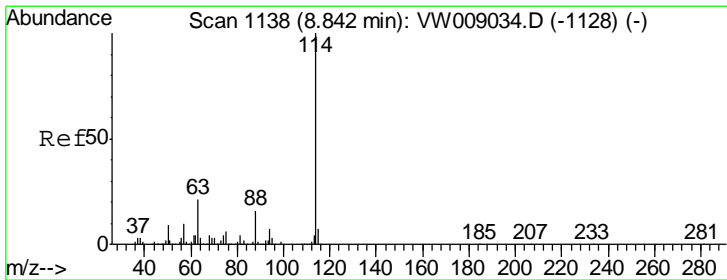
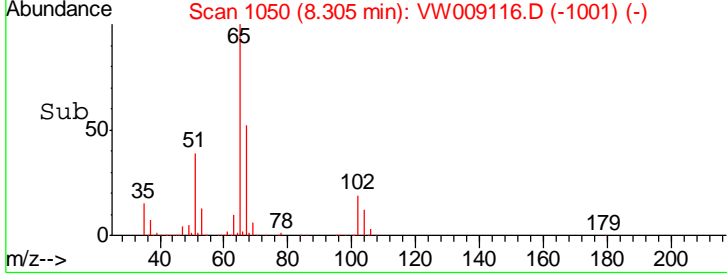
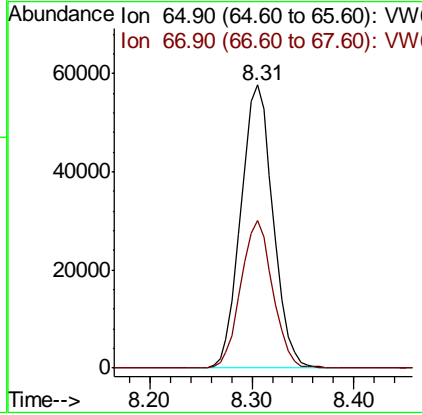
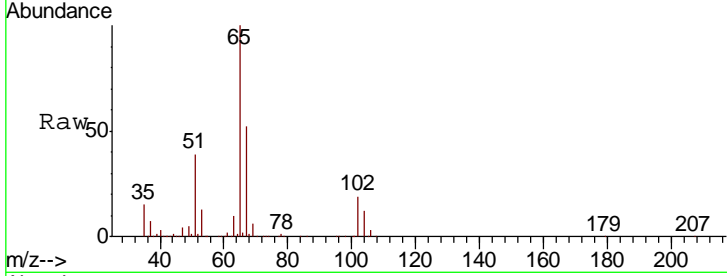




#33
 1,2-Dichloroethane-d4
 Concen: 57.537 ug/l
 RT: 8.31 min Scan# 1050
 Delta R.T. 0.00 min
 Lab File: VW009116.D
 Acq: 12 Mar 2019 06:12

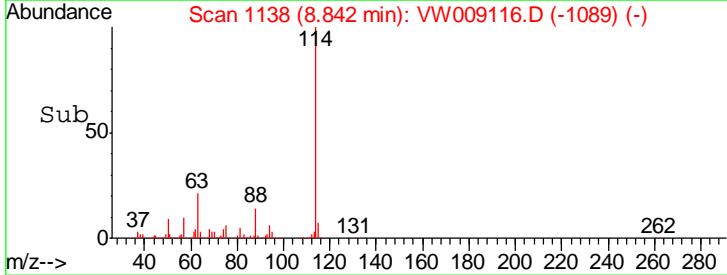
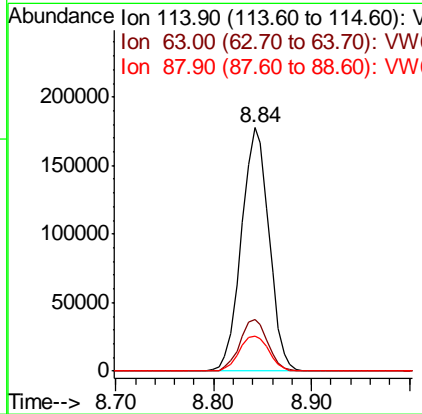
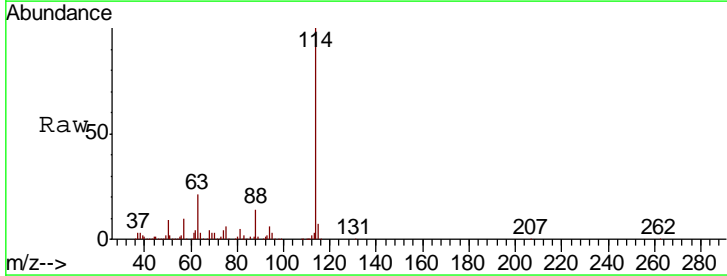
Instrument :
 MSVOA_W
ClientSampled :
 SUP-7B-G-10-031119

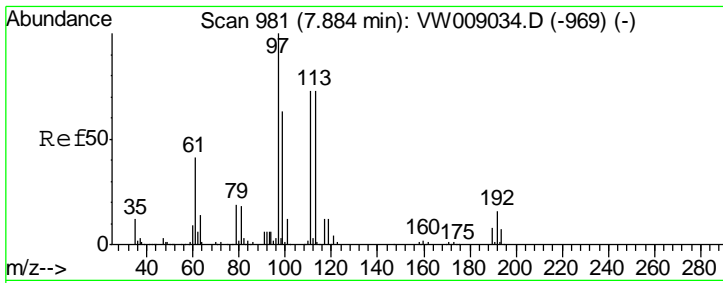
Tgt Ion: 65 Resp: 126763
 Ion Ratio Lower Upper
 65 100
 67 51.5 0.0 103.0



#34
 1,4-Difluorobenzene
 Concen: 50.000 ug/l
 RT: 8.84 min Scan# 1138
 Delta R.T. 0.00 min
 Lab File: VW009116.D
 Acq: 12 Mar 2019 06:12

Tgt Ion: 114 Resp: 348309
 Ion Ratio Lower Upper
 114 100
 63 21.2 0.0 41.2
 88 14.3 0.0 31.2

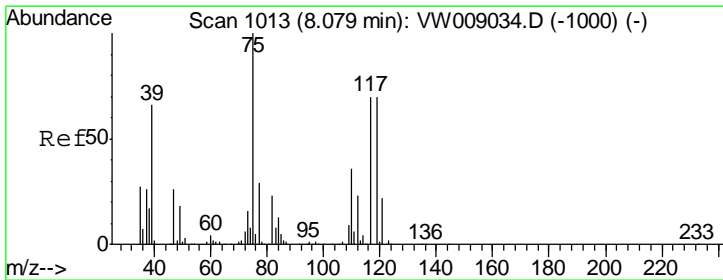
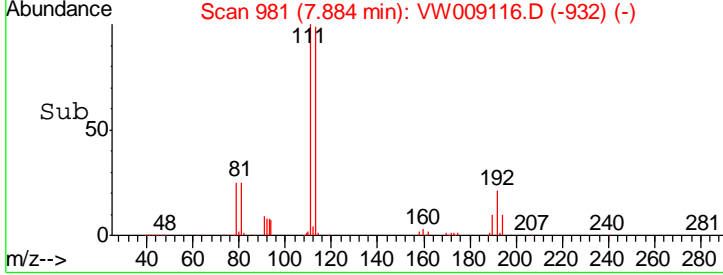
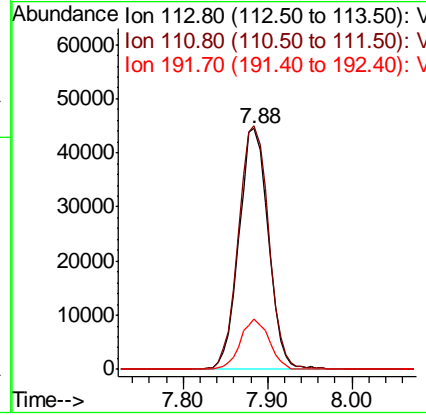
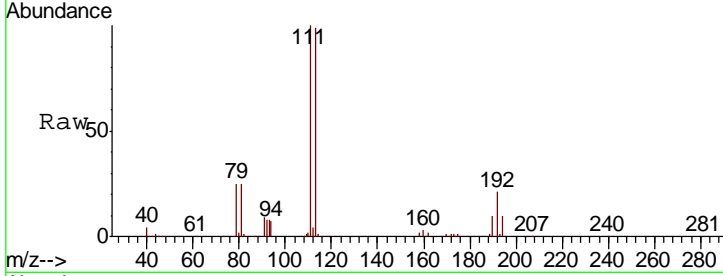




#35
 Dibromofluoromethane
 Concen: 49.797 ug/l
 RT: 7.88 min Scan# 981
 Delta R.T. 0.00 min
 Lab File: VW009116.D
 Acq: 12 Mar 2019 06:12

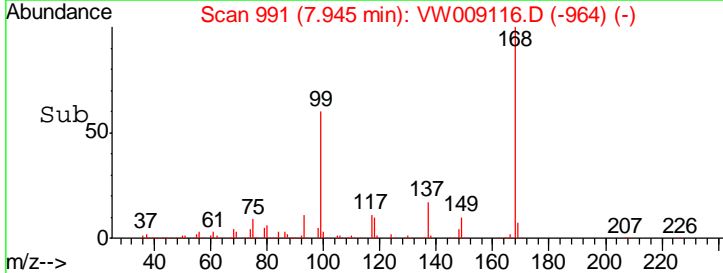
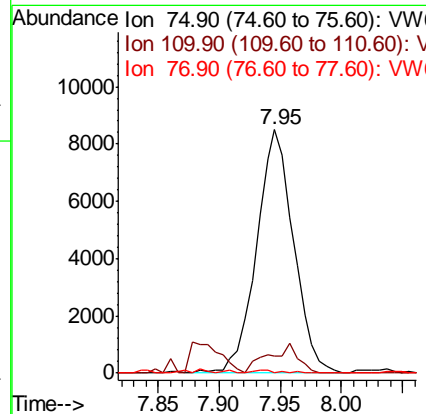
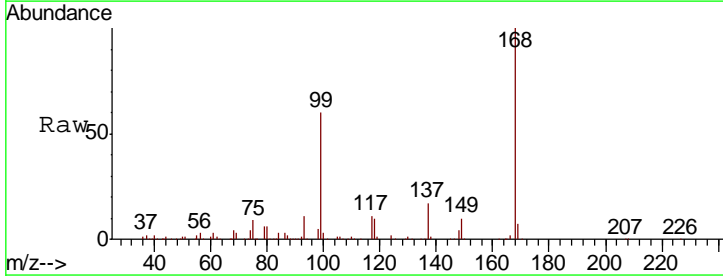
Instrument :
 MSVOA_W
ClientSampled :
 SUP-7B-G-10-031119

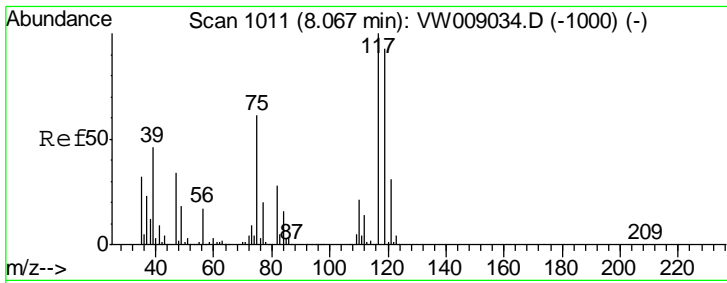
Tgt Ion	Resp	Lower	Upper
113	104430		
111	104.1	81.0	121.4
192	20.7	17.1	25.7



#36
 1,1-Dichloropropene
 Concen: 4.918 ug/l
 RT: 7.95 min Scan# 991
 Delta R.T. -0.13 min
 Lab File: VW009116.D
 Acq: 12 Mar 2019 06:12

Tgt Ion	Resp	Lower	Upper
75	17913		
75	100		
110	9.7	17.6	52.9#
77	0.0	25.1	37.7#

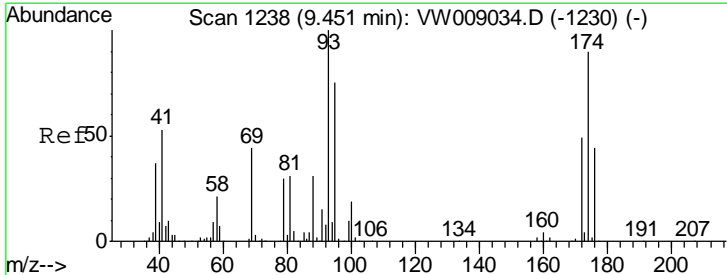
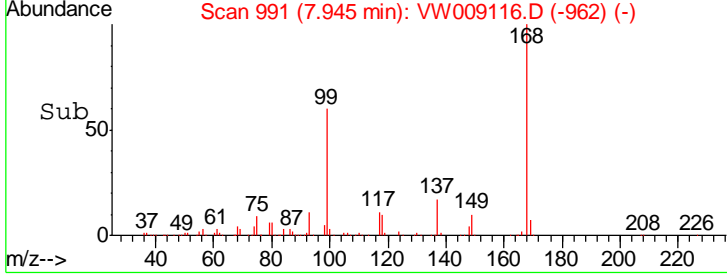
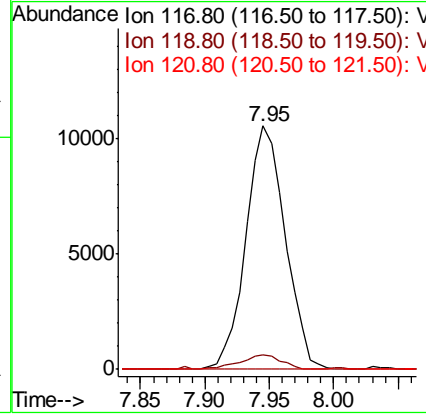
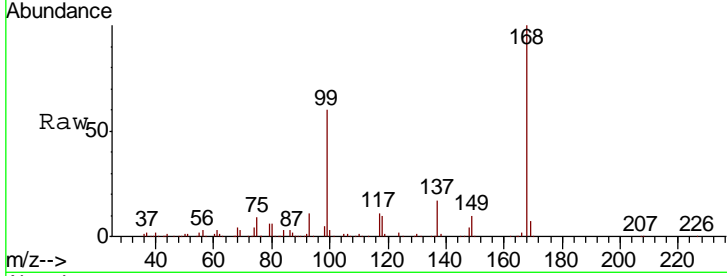




#38
 Carbon Tetrachloride
 Concen: 5.914 ug/l
 RT: 7.95 min Scan# 991
 Delta R.T. -0.12 min
 Lab File: VW009116.D
 Acq: 12 Mar 2019 06:12

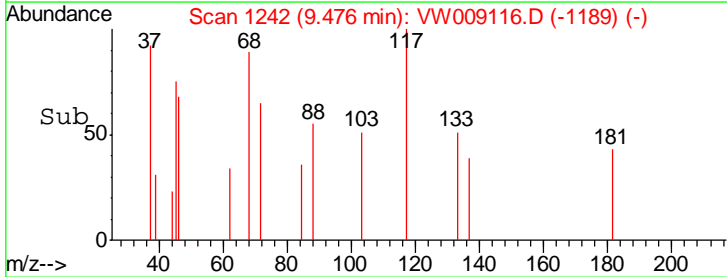
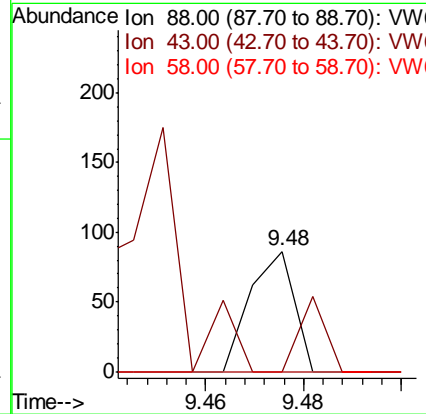
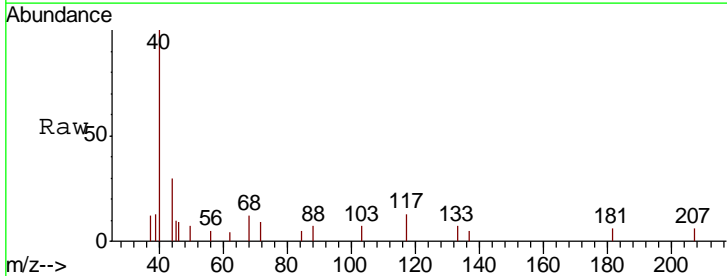
Instrument :
 MSVOA_W
ClientSampled :
 SUP-7B-G-10-031119

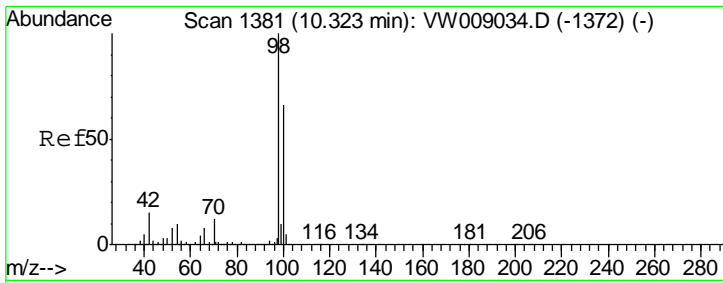
Tgt Ion	Resp	Lower	Upper
117	22243		
119	5.7	74.6	112.0#
121	0.0	24.7	37.1#



#49
 1,4-Dioxane
 Concen: 2.836 ug/l
 RT: 9.48 min Scan# 1242
 Delta R.T. 0.02 min
 Lab File: VW009116.D
 Acq: 12 Mar 2019 06:12

Tgt Ion	Resp	Lower	Upper
88	54		
43	37.0	29.0	43.4
58	0.0	59.2	88.8#

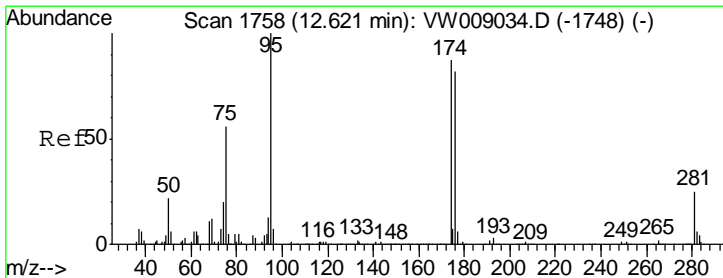
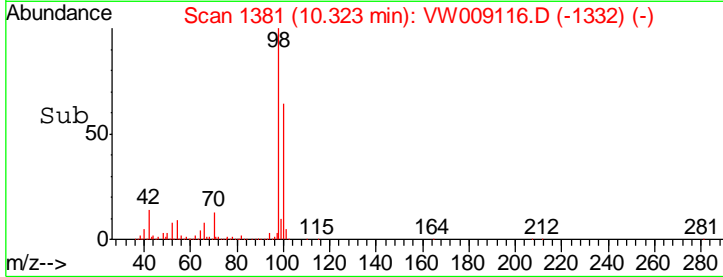
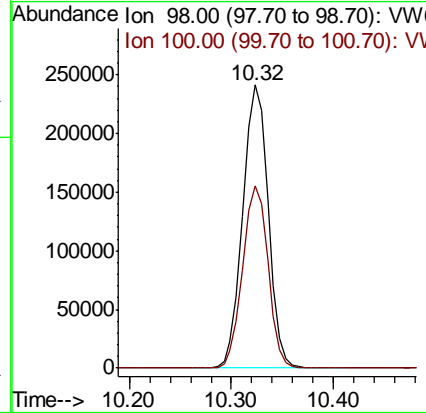
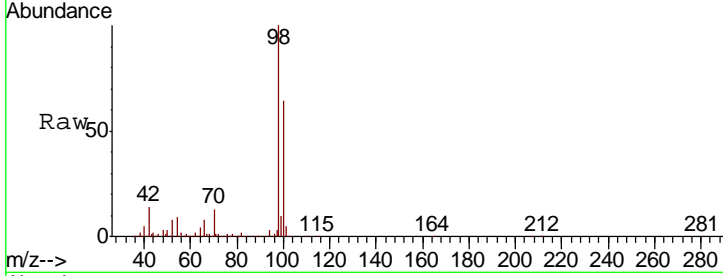




#50
 Toluene-d8
 Concen: 48.417 ug/l
 RT: 10.32 min Scan# 1381
 Delta R.T. 0.00 min
 Lab File: VW009116.D
 Acq: 12 Mar 2019 06:12

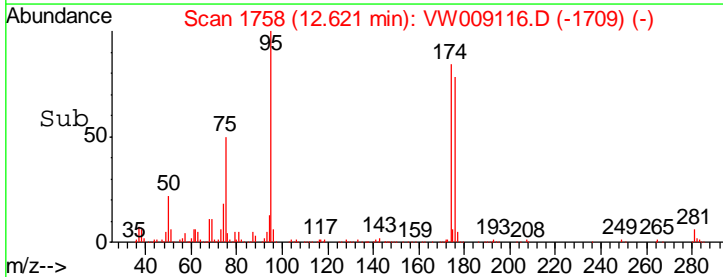
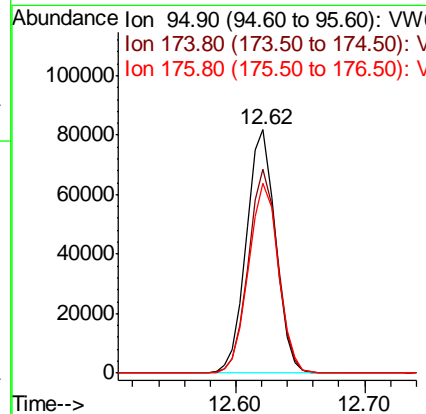
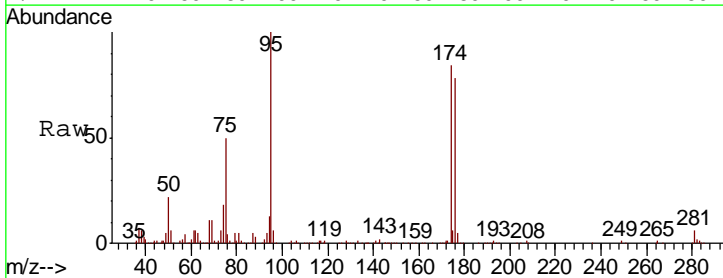
Instrument :
 MSVOA_W
 ClientSampled :
 SUP-7B-G-10-031119

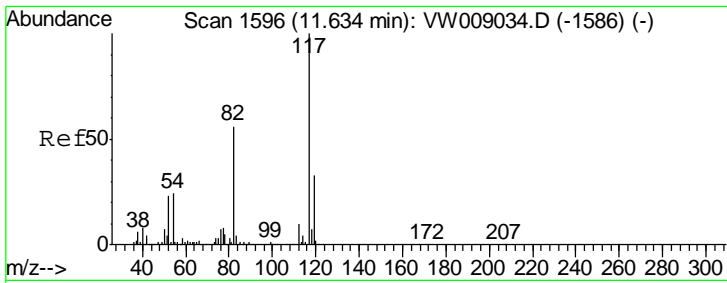
Tgt Ion: 98 Resp: 417029
 Ion Ratio Lower Upper
 98 100
 100 64.3 51.9 77.9



#62
 4-Bromofluorobenzene
 Concen: 37.647 ug/l
 RT: 12.62 min Scan# 1758
 Delta R.T. 0.00 min
 Lab File: VW009116.D
 Acq: 12 Mar 2019 06:12

Tgt Ion: 95 Resp: 127651
 Ion Ratio Lower Upper
 95 100
 174 84.5 0.0 167.0
 176 80.1 0.0 159.4

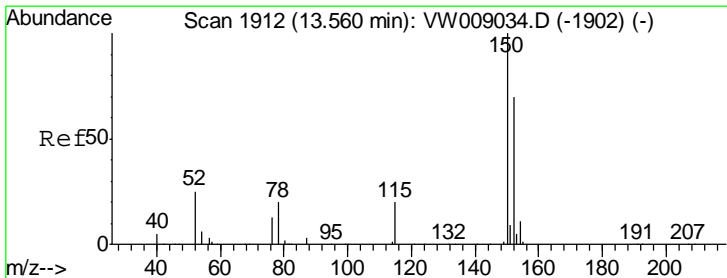
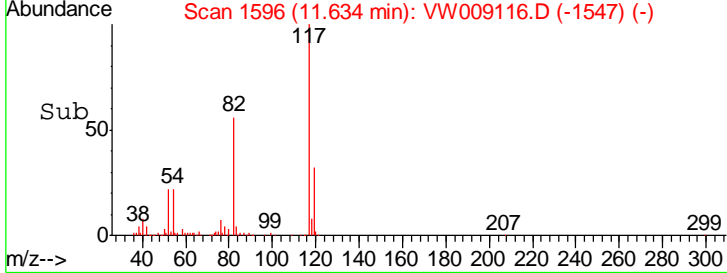
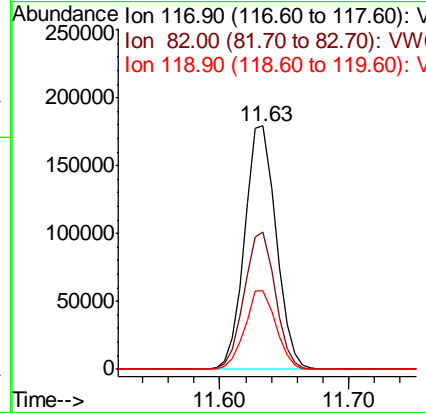
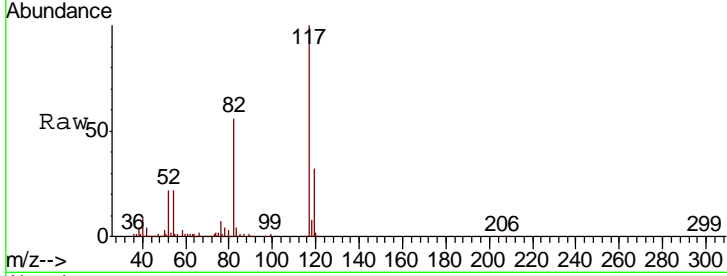




#63
 Chlorobenzene-d5
 Concen: 50.000 ug/l
 RT: 11.63 min Scan# 1596
 Delta R.T. 0.00 min
 Lab File: VW009116.D
 Acq: 12 Mar 2019 06:12

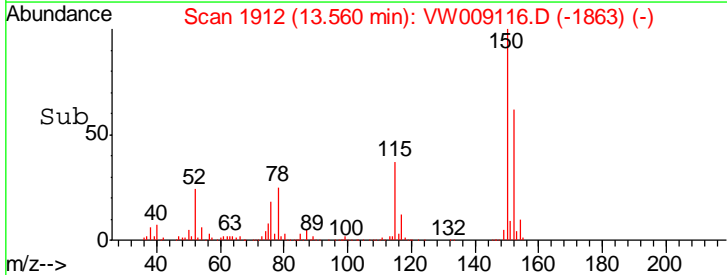
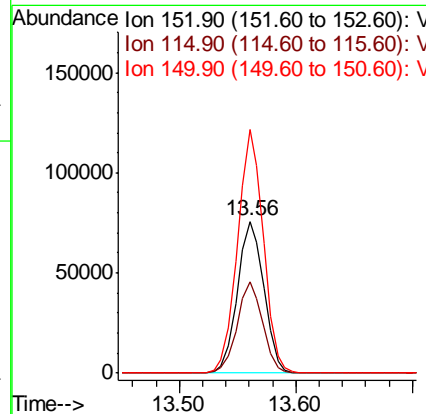
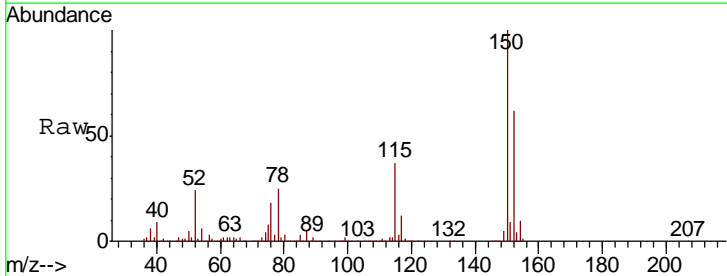
Instrument : MSVOA_W
 ClientSampleId : SUP-7B-G-10-031119

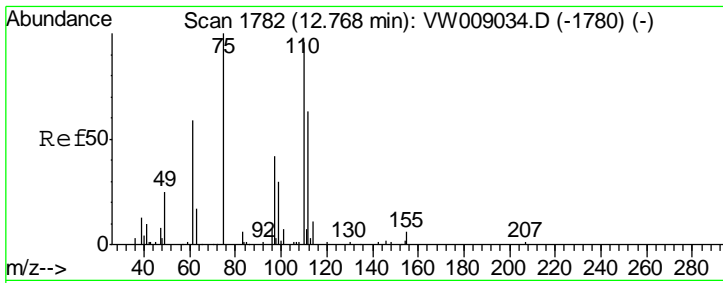
Tgt Ion	Resp	Lower	Upper
117	302674		
82	56.4	45.0	67.6
119	32.4	26.6	39.8



#72
 1,4-Dichlorobenzene-d4
 Concen: 50.000 ug/l
 RT: 13.56 min Scan# 1912
 Delta R.T. 0.00 min
 Lab File: VW009116.D
 Acq: 12 Mar 2019 06:12

Tgt Ion	Resp	Lower	Upper
152	119924		
152	100		
115	57.9	28.9	86.7
150	155.8	0.0	349.2

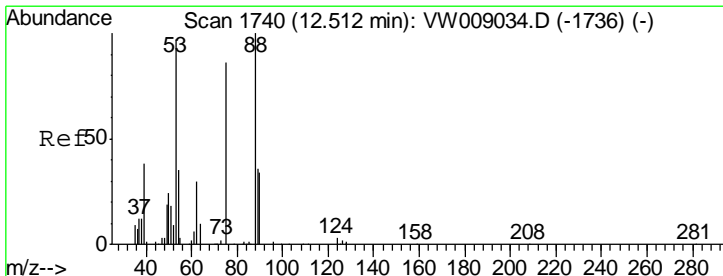
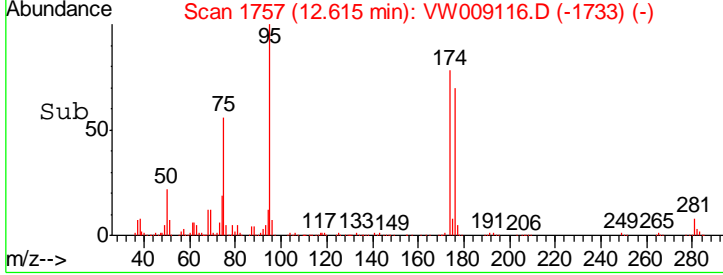
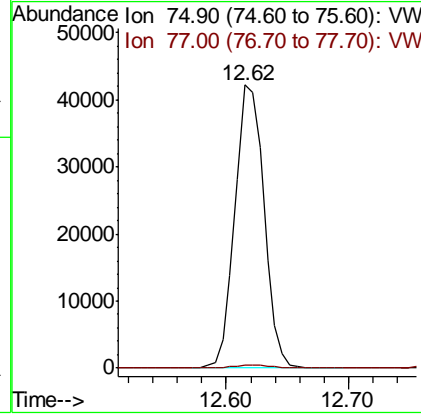
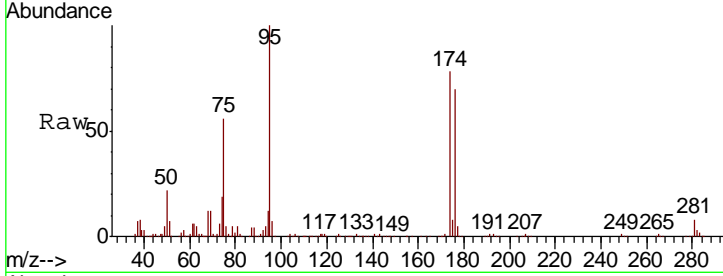




#76
 1,2,3-Trichloropropane
 Concen: 73.160 ug/l
 RT: 12.62 min Scan# 1757
 Delta R.T. -0.15 min
 Lab File: VW009116.D
 Acq: 12 Mar 2019 06:12

Instrument :
 MSVOA_W
 ClientSampled :
 SUP-7B-G-10-031119

Tgt Ion: 75 Resp: 69319
 Ion Ratio Lower Upper
 75 100
 77 1.5 186.7 560.0#



#81
 trans-1,4-Dichloro-2-butene
 Concen: 163.640 ug/l
 RT: 12.62 min Scan# 1757
 Delta R.T. 0.10 min
 Lab File: VW009116.D
 Acq: 12 Mar 2019 06:12

Tgt Ion: 75 Resp: 69319
 Ion Ratio Lower Upper
 75 100
 53 0.2 90.5 135.7#
 89 0.2 37.5 56.3#

