

Data Path : Z:\voasrv\HPCHEM1\MSVOA_W\Data\VW031422\
 Data File : VW022320.D
 Acq On : 14 Mar 2022 15:12
 Operator : SY/VA
 Sample : N1820-07
 Misc : 4.28g/10mL/MSVOA_W/SOIL
 ALS Vial : 1 Sample Multiplier: 1

Instrument :
 MSVOA_W
 ClientSampleId :
 DBRZ7

Integration Parameters: LSCINT.P

Integrator: RTE
 Smoothing : OFF Filtering: 5
 Sampling : 1 Min Area: 0 % of largest Peak
 Start Thrs: 0.2 Max Peaks: 100
 Stop Thrs : 0 Peak Location: TOP

If leading or trailing edge < 100 prefer < Baseline drop else tangent >
 Peak separation: 5

Method : Z:\voasrv\HPCHEM1\MSVOA_W\Method\SFAMWLM022322SMA.M
 Title : SFAM01.0

Signal : TIC: VW022320.D\data.ms

peak #	R.T. min	first scan	max scan	last scan	PK TY	peak height	corr. area	corr. % max.	% of total
1	2.349	68	73	80	rVB	52952	82834	16.13%	2.049%
2	2.879	155	160	168	rVB	33489	67302	13.10%	1.665%
3	3.422	247	249	250	rBV	471	276	0.05%	0.007%
4	3.531	265	267	270	rBV2	500	598	0.12%	0.015%
5	3.574	273	274	277	rVB2	400	268	0.05%	0.007%
6	3.611	278	280	282	rVB3	401	242	0.05%	0.006%
7	3.672	288	290	292	rBV2	496	498	0.10%	0.012%
8	4.013	335	346	359	rBV2	52143	154250	30.03%	3.816%
9	4.251	380	385	389	rBV5	1100	2710	0.53%	0.067%
10	4.379	398	406	418	rVB2	3950	12081	2.35%	0.299%
11	4.489	422	424	427	rBV2	281	295	0.06%	0.007%
12	4.611	443	444	446	rVB	376	246	0.05%	0.006%
13	4.672	452	454	459	rVB2	395	447	0.09%	0.011%
14	4.824	477	479	481	rVB	455	287	0.06%	0.007%
15	4.915	484	494	502	rBV7	2323	7957	1.55%	0.197%
16	5.013	508	510	514	rVB2	321	323	0.06%	0.008%
17	5.068	515	519	522	rBV3	206	305	0.06%	0.008%
18	5.348	564	565	572	rBV3	270	556	0.11%	0.014%
19	5.421	575	577	580	rVB2	317	259	0.05%	0.006%
20	5.507	587	591	593	rBV2	222	287	0.06%	0.007%
21	5.531	593	595	602	rBV3	342	509	0.10%	0.013%
22	5.580	602	603	606	rVB2	657	406	0.08%	0.010%
23	5.793	632	638	639	rBV4	586	937	0.18%	0.023%
24	6.208	705	706	710	rVB	344	319	0.06%	0.008%
25	6.324	724	725	727	rVV	271	264	0.05%	0.007%
26	6.354	729	730	733	rBV2	316	330	0.06%	0.008%
27	6.641	775	777	780	rBV	395	285	0.06%	0.007%
28	6.726	788	791	793	rBV	392	414	0.08%	0.010%
29	6.982	829	833	835	rBV3	326	435	0.08%	0.011%
30	7.074	840	848	863	rBV2	13859	40245	7.83%	0.996%
31	7.384	897	899	902	rVB	449	365	0.07%	0.009%
32	7.647	933	942	953	rVB2	83575	210238	40.93%	5.201%
33	7.927	986	988	990	rBV2	614	680	0.13%	0.017%
34	8.128	1020	1021	1026	rVV2	344	382	0.07%	0.009%
35	8.275	1035	1045	1059	rVV2	157290	470619	91.62%	11.642%
36	8.841	1129	1138	1149	rBV	219455	426386	83.01%	10.548%

Data Path : Z:\voasrv\HPCHEM1\MSVOA_W\Data\VW031422\
 Data File : VW022320.D
 Acq On : 14 Mar 2022 15:12
 Operator : SY/VA
 Sample : N1820-07
 Misc : 4.28g/10mL/MSVOA_W/SOIL
 ALS Vial : 1 Sample Multiplier: 1

Instrument :
 MSVOA_W
 ClientSampleId :
 DBRZ7

Integration Parameters: LSCINT.P

Integrator: RTE
 Smoothing : OFF
 Sampling : 1
 Start Thrs: 0.2
 Stop Thrs : 0

Filtering: 5
 Min Area: 0 % of largest Peak
 Max Peaks: 100
 Peak Location: TOP

If leading or trailing edge < 100 prefer < Baseline drop else tangent >
 Peak separation: 5

Method : Z:\voasrv\HPCHEM1\MSVOA_W\Method\SFAMWLM022322SMA.M
 Title : SFAM01.0

37	9.018	1163	1167	1169	rBV2	419	470	0.09%	0.012%
38	9.073	1172	1176	1178	rBV2	1035	1402	0.27%	0.035%
39	9.128	1184	1185	1188	rVB	286	309	0.06%	0.008%
40	9.195	1194	1196	1199	rVB2	419	309	0.06%	0.008%
41	9.274	1199	1209	1217	rBV	110897	223045	43.42%	5.518%
42	9.512	1243	1248	1250	rBV2	300	437	0.09%	0.011%
43	9.665	1269	1273	1276	rVB2	588	734	0.14%	0.018%
44	9.908	1311	1313	1316	rBV	250	252	0.05%	0.006%
45	10.030	1326	1333	1343	rBV	56491	105208	20.48%	2.603%
46	10.177	1355	1357	1358	rVB	441	244	0.05%	0.006%
47	10.201	1358	1361	1362	rBV2	338	293	0.06%	0.007%
48	10.323	1373	1381	1388	rBV	229878	406172	79.07%	10.048%
49	10.451	1400	1402	1406	rBV3	550	624	0.12%	0.015%
50	10.579	1415	1423	1431	rBV	38381	68585	13.35%	1.697%
51	10.701	1438	1443	1445	rBV3	896	1297	0.25%	0.032%
52	10.866	1467	1470	1472	rBV	254	291	0.06%	0.007%
53	10.920	1472	1479	1488	rBV	54083	89699	17.46%	2.219%
54	11.042	1497	1499	1500	rBV	323	263	0.05%	0.007%
55	11.122	1510	1512	1515	rVB3	342	326	0.06%	0.008%
56	11.207	1524	1526	1529	rBV2	268	322	0.06%	0.008%
57	11.244	1529	1532	1536	rVV3	457	717	0.14%	0.018%
58	11.274	1536	1537	1538	rVV	476	245	0.05%	0.006%
59	11.365	1550	1552	1553	rVV2	443	319	0.06%	0.008%
60	11.384	1553	1555	1557	rVV2	328	299	0.06%	0.007%
61	11.548	1578	1582	1585	rVB3	347	541	0.11%	0.013%
62	11.628	1585	1595	1606	rBV	297344	513664	100.00%	12.707%
63	11.725	1609	1611	1612	rVV	561	277	0.05%	0.007%
64	11.902	1638	1640	1641	rBV	410	255	0.05%	0.006%
65	11.975	1650	1652	1654	rBV	316	335	0.07%	0.008%
66	12.164	1680	1683	1684	rBV3	473	474	0.09%	0.012%
67	12.292	1702	1704	1707	rBV3	287	259	0.05%	0.006%
68	12.335	1707	1711	1715	rBV3	423	555	0.11%	0.014%
69	12.414	1721	1724	1725	rBV2	298	320	0.06%	0.008%
70	12.457	1729	1731	1737	rBV2	611	1114	0.22%	0.028%
71	12.542	1741	1745	1748	rVB2	235	284	0.06%	0.007%
72	12.597	1748	1754	1763	rBV2	4440	8771	1.71%	0.217%
73	12.688	1763	1769	1777	rBV	100217	169044	32.91%	4.182%
74	12.749	1777	1779	1783	rBV5	702	1027	0.20%	0.025%
75	12.938	1806	1810	1811	rBV2	1016	1216	0.24%	0.030%
76	13.188	1846	1851	1857	rVB4	1473	2639	0.51%	0.065%

Data Path : Z:\voasrv\HPCHEM1\MSVOA_W\Data\VW031422\
 Data File : VW022320.D
 Acq On : 14 Mar 2022 15:12
 Operator : SY/VA
 Sample : N1820-07
 Misc : 4.28g/10mL/MSVOA_W/SOIL
 ALS Vial : 1 Sample Multiplier: 1

Instrument :
 MSVOA_W
 ClientSampleId :
 DBRZ7

Integration Parameters: LSCINT.P

Integrator: RTE
 Smoothing : OFF Filtering: 5
 Sampling : 1 Min Area: 0 % of largest Peak
 Start Thrs: 0.2 Max Peaks: 100
 Stop Thrs : 0 Peak Location: TOP

If leading or trailing edge < 100 prefer < Baseline drop else tangent >
 Peak separation: 5

Method : Z:\voasrv\HPCHEM1\MSVOA_W\Method\SFAMWLM022322SMA.M
 Title : SFAM01.0

77	13.249	1857	1861	1864	rBV5	1070	1936	0.38%	0.048%
78	13.402	1880	1886	1892	rBV5	2216	4283	0.83%	0.106%
79	13.505	1897	1903	1904	rBV5	805	1358	0.26%	0.034%
80	13.554	1904	1911	1923	rVV	321950	511288	99.54%	12.648%
81	13.743	1939	1942	1943	rBV2	413	486	0.09%	0.012%
82	13.761	1943	1945	1951	rVB4	1360	1796	0.35%	0.044%
83	13.853	1951	1960	1970	rBV	230723	394073	76.72%	9.748%
84	14.066	1988	1995	1999	rBV2	3375	6137	1.19%	0.152%
85	14.322	2031	2037	2044	rVB3	3358	5769	1.12%	0.143%
86	14.493	2061	2065	2067	rBV3	767	1255	0.24%	0.031%
87	14.621	2078	2086	2094	rBV3	1616	2854	0.56%	0.071%
88	14.719	2096	2102	2106	rVV3	3695	5608	1.09%	0.139%
89	14.950	2136	2140	2145	rBV4	494	721	0.14%	0.018%
90	15.072	2158	2160	2162	rBV	301	290	0.06%	0.007%
91	15.127	2164	2169	2173	rVV2	1710	2482	0.48%	0.061%
92	15.206	2180	2182	2186	rVB3	663	646	0.13%	0.016%
93	15.359	2205	2207	2212	rVB2	1361	1709	0.33%	0.042%
94	15.481	2225	2227	2231	rVV3	570	652	0.13%	0.016%
95	15.548	2233	2238	2245	rVB4	4744	7923	1.54%	0.196%
96	15.999	2309	2312	2314	rBV	406	442	0.09%	0.011%
97	16.200	2343	2345	2346	rBV2	382	297	0.06%	0.007%
98	16.316	2357	2364	2366	rBV5	1395	2443	0.48%	0.060%
99	16.395	2376	2377	2379	rBV2	284	273	0.05%	0.007%
100	16.419	2379	2381	2383	rVB	534	293	0.06%	0.007%

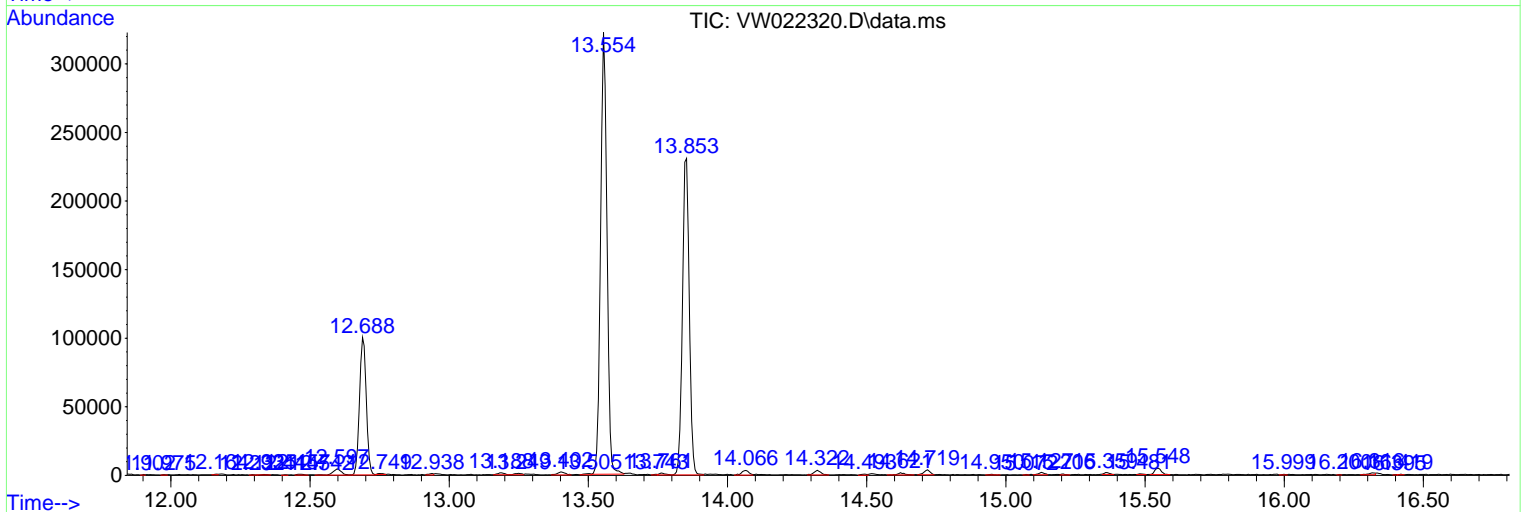
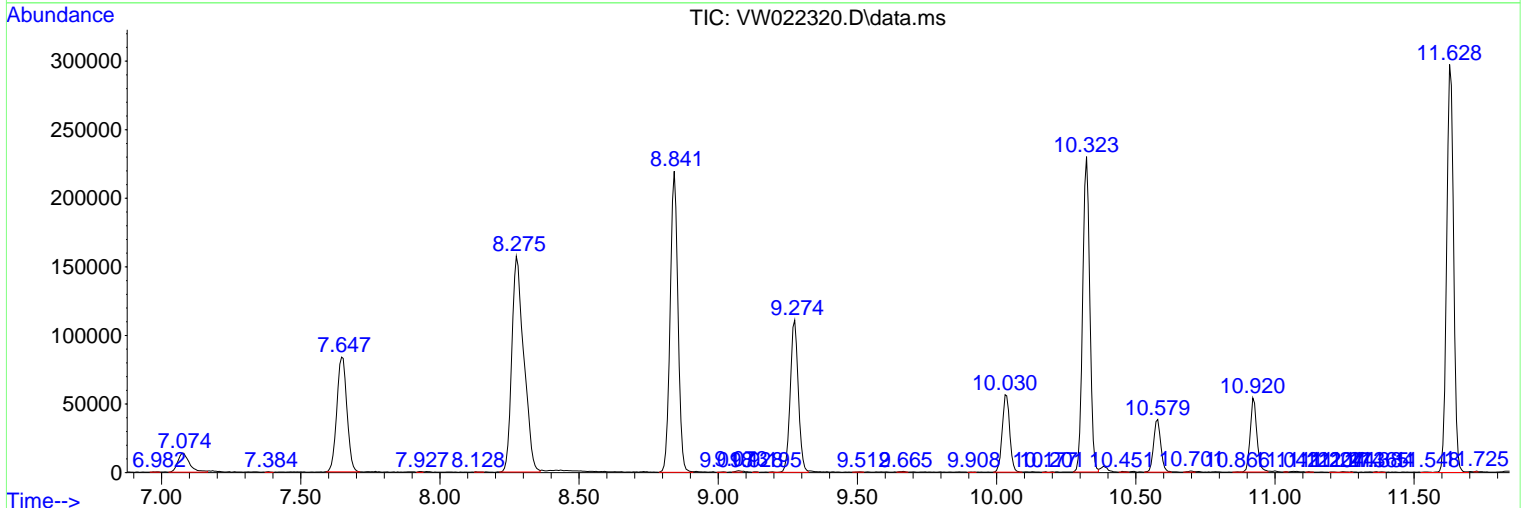
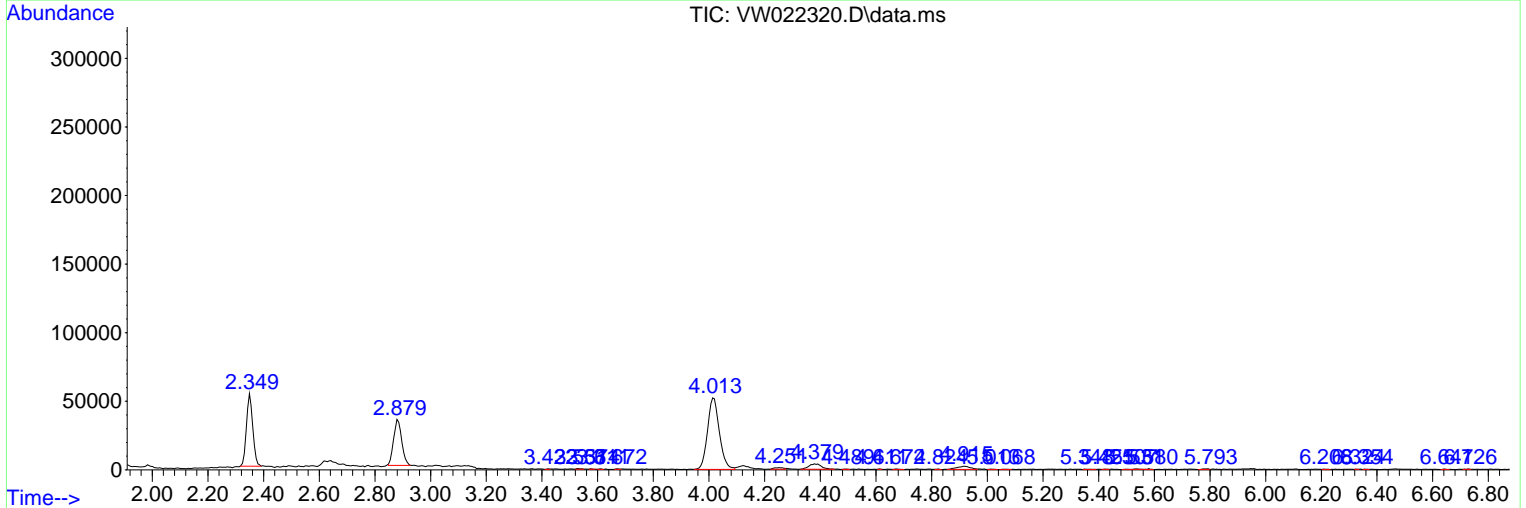
Sum of corrected areas: 4042486

Data Path : Z:\voasrv\HPCHEM1\MSVOA_W\Data\VW031422\
 Data File : VW022320.D
 Acq On : 14 Mar 2022 15:12
 Operator : SY/VA
 Sample : N1820-07
 Misc : 4.28g/10mL/MSVOA_W/SOIL
 ALS Vial : 1 Sample Multiplier: 1

Instrument :
 MSVOA_W
ClientSampleId :
 DBRZ7

Quant Method : Z:\voasrv\HPCHEM1\MSVOA_W\Method\SFAMWLM022322SMA.M
 Quant Title : SFAM01.0

TIC Library : C:\Database\NIST20.L
 TIC Integration Parameters: LSCINT.P



Library Search Compound Report

Data Path : Z:\voasrv\HPCHEM1\MSVOA_W\Data\VW031422\
Data File : VW022320.D
Acq On : 14 Mar 2022 15:12
Operator : SY/VA
Sample : N1820-07
Misc : 4.28g/10mL/MSVOA_W/SOIL
ALS Vial : 1 Sample Multiplier: 1

Instrument :
MSVOA_W
ClientSampleId :
DBRZ7

Quant Method : Z:\voasrv\HPCHEM1\MSVOA_W\Method\SFAMWLM022322SMA.M
Quant Title : SFAM01.0

TIC Library : C:\Database\NIST20.L
TIC Integration Parameters: LSCINT.P

No Library Search Compounds Detected

Data Path : Z:\voasrv\HPCHEM1\MSVOA_W\Data\VW031422\
Data File : VW022320.D
Acq On : 14 Mar 2022 15:12
Operator : SY/VA
Sample : N1820-07
Misc : 4.28g/10mL/MSVOA_W/SOIL
ALS Vial : 1 Sample Multiplier: 1

Instrument :
MSVOA_W
ClientSampleId :
DBRZ7

Quant Method : Z:\voasrv\HPCHEM1\MSVOA_W\Method\SFAMWLM022322SMA.M
Quant Title : SFAM01.0

TIC Library : C:\Database\NIST0.L
TIC Integration Parameters: LSCINT.P

TIC Top Hit name	RT	EstConc	Units	Response	--Internal Standard--		
					#	RT	Resp Conc
