

Data Path : Z:\voasrv\HPCHEM1\MSVOA_W\Data\VW031522\
 Data File : VW022339.D
 Acq On : 15 Mar 2022 15:59
 Operator : SY/VA
 Sample : N1883-16
 Misc : 6.91g/10mL/MSVOA_W/SOIL
 ALS Vial : 1 Sample Multiplier: 1

Instrument :
 MSVOA_W
ClientSampleId :
 DBSB3

Manual Integrations
APPROVED
 Reviewed By :Semsettin Yesilyurt 03/16/2022
 Supervised By :Mahesh Dadoda 03/16/2022

Quant Time: Mar 16 05:35:32 2022
 Quant Method : Z:\voasrv\HPCHEM1\MSVOA_W\Method\SFAMWLM022322SMA.M
 Quant Title : SFAM01.0
 QLast Update : Wed Mar 16 05:30:16 2022
 Response via : Initial Calibration

Compound	R.T.	QIon	Response	Conc	Units	Dev(Min)
Internal Standards						
1) 1,4-Difluorobenzene	8.841	114	176833	25.000	ug/L	0.00
28) Chlorobenzene-d5	11.633	117	166617	25.000	ug/L	0.00
58) 1,4-Dichlorobenzene-d4	13.554	152	78042	25.000	ug/L	0.00
System Monitoring Compounds						
4) Vinyl Chloride-d3	2.355	65	45245	19.617	ug/L	0.00
Spiked Amount	25.000	Range 30 - 150	Recovery =	78.480%		
7) Chloroethane-d5	2.891	69	37222	20.511	ug/L	0.01
Spiked Amount	25.000	Range 30 - 150	Recovery =	82.040%		
11) 1,1-Dichloroethene-d2	4.019	63	49404	13.987	ug/L	0.00
Spiked Amount	25.000	Range 45 - 110	Recovery =	55.960%		
21) 2-Butanone-d5	7.073	46	18561	47.863	ug/L	0.00
Spiked Amount	50.000	Range 20 - 135	Recovery =	95.720%		
24) Chloroform-d	7.646	84	85850	21.760	ug/L	0.00
Spiked Amount	25.000	Range 40 - 150	Recovery =	87.040%		
26) 1,2-Dichloroethane-d4	8.305	65	45195	22.037	ug/L	0.00
Spiked Amount	25.000	Range 70 - 130	Recovery =	88.160%		
32) Benzene-d6	8.274	84	160076	20.643	ug/L	0.00
Spiked Amount	25.000	Range 20 - 135	Recovery =	82.560%		
36) 1,2-Dichloropropane-d6	9.274	67	47103	21.873	ug/L	0.00
Spiked Amount	25.000	Range 70 - 120	Recovery =	87.480%		
41) Toluene-d8	10.323	98	148817	19.304	ug/L	0.00
Spiked Amount	25.000	Range 30 - 130	Recovery =	77.200%		
43) trans-1,3-Dichloroprop...	10.579	79	18534	19.411	ug/L	0.00
Spiked Amount	25.000	Range 30 - 135	Recovery =	77.640%		
47) 2-Hexanone-d5	10.920	63	14776	41.718	ug/L	0.00
Spiked Amount	50.000	Range 20 - 135	Recovery =	83.440%		
56) 1,1,2,2-Tetrachloroeth...	12.694	84	42396	22.433	ug/L	0.00
Spiked Amount	25.000	Range 45 - 120	Recovery =	89.720%		
66) 1,2-Dichlorobenzene-d4	13.853	152	57747	23.038	ug/L	0.00
Spiked Amount	25.000	Range 75 - 120	Recovery =	92.160%		
Target Compounds						
13) Acetone	4.129	43	2780m	8.777	ug/L	Qvalue

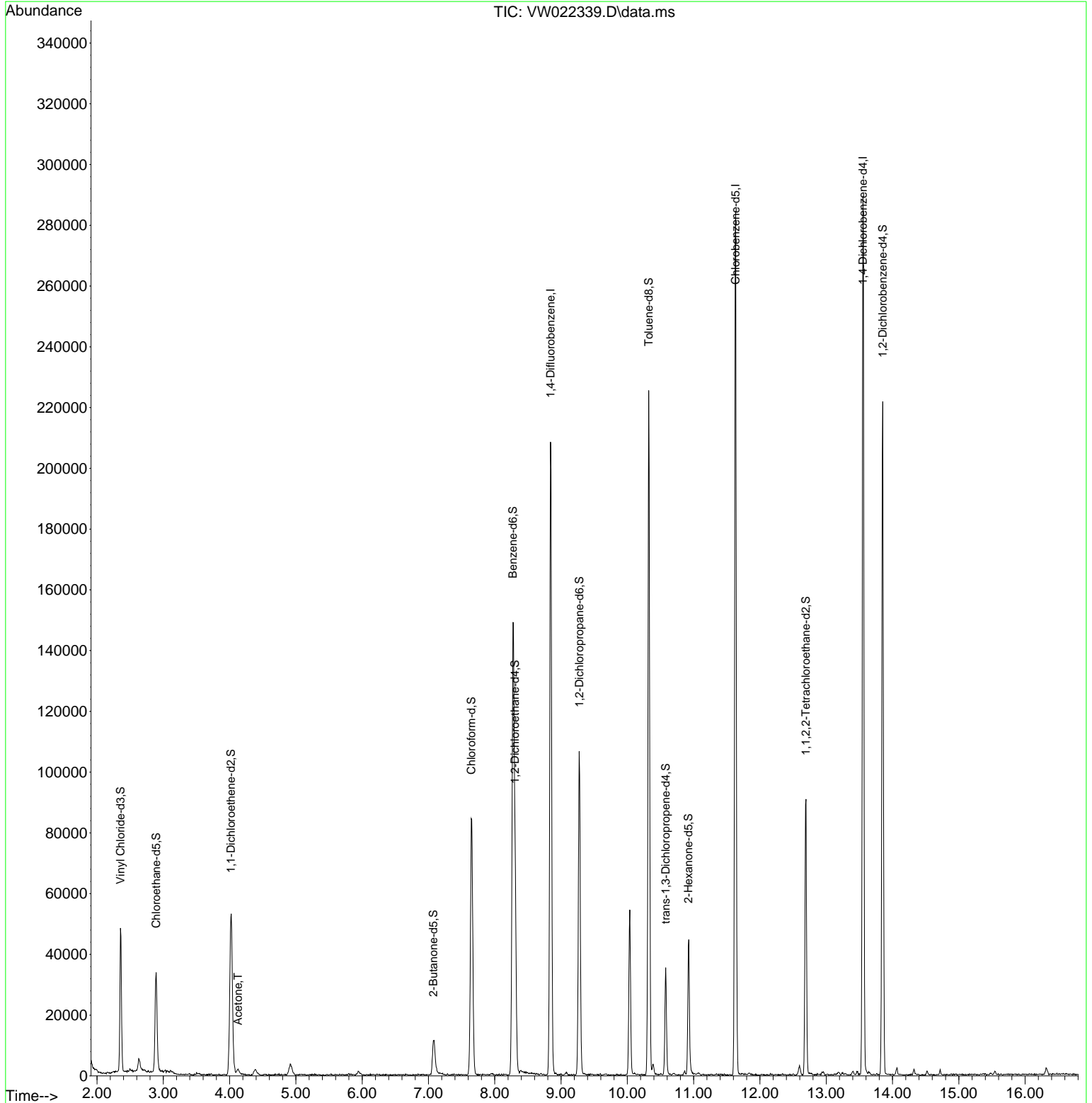
(#) = qualifier out of range (m) = manual integration (+) = signals summed

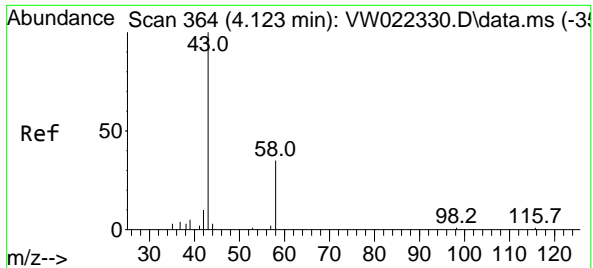
Data Path : Z:\voasrv\HPCHEM1\MSVOA_W\Data\VW031522\
 Data File : VW022339.D
 Acq On : 15 Mar 2022 15:59
 Operator : SY/VA
 Sample : N1883-16
 Misc : 6.91g/10mL/MSVOA_W/SOIL
 ALS Vial : 1 Sample Multiplier: 1

Instrument :
 MSVOA_W
ClientSampleId :
 DBSB3

Quant Time: Mar 16 05:35:32 2022
 Quant Method : Z:\voasrv\HPCHEM1\MSVOA_W\Method\SFAMWLM022322SMA.M
 Quant Title : SFAM01.0
 QLast Update : Wed Mar 16 05:30:16 2022
 Response via : Initial Calibration

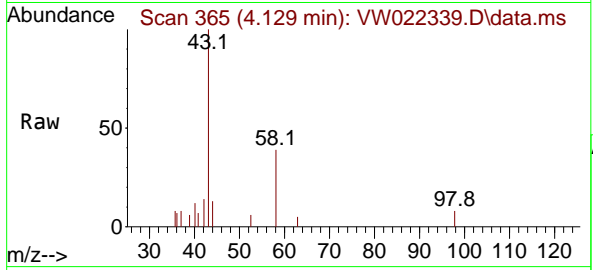
Manual Integrations
APPROVED
 Reviewed By :Semsettin Yesilyurt 03/16/2022
 Supervised By :Mahesh Dadoda 03/16/2022





#13
 Acetone
 Concen: 8.777 ug/L m
 RT: 4.129 min Scan# 30
 Delta R.T. 0.006 min
 Lab File: VW022339.D
 Acq: 15 Mar 2022 15:59

Instrument : MSVOA_W
 ClientSampleId : DBSB3



Tgt Ion: 43 Resp: 2780
 Ion Ratio Lower Upper
 43 100
 58 32.3 0.0 69.2

Manual Integrations
APPROVED
 Reviewed By :Semsettin Yesilyurt 03/16/2022
 Supervised By :Mahesh Dadoda 03/16/2022

