

Data Path : Z:\voasrv\HPCHEM1\MSVOA_W\Data\VW031921\
 Data File : VW018396.D
 Acq On : 19 Mar 2021 18:05
 Operator : SY/VA
 Sample : M1698-09
 Misc : 5.50G/10ML/MSVOA_W/SOIL
 ALS Vial : 31 Sample Multiplier: 1

Instrument :
 MSVOA_W
 ClientSampleId :
 BG4H3

Quant Time: Mar 20 01:43:56 2021
 Quant Method : Z:\voasrv\HPCHEM1\MSVOA_W\Method\SOM2WLM031921S.M
 Quant Title : VOC Analysis
 QLast Update : Sat Mar 20 01:36:44 2021
 Response via : Initial Calibration

Compound	R.T.	QIon	Response	Conc	Units	Dev(Min)

Internal Standards						
1) 1,4-Difluorobenzene	8.841	114	531586	25.00	ug/L	0.00
28) Chlorobenzene-d5	11.634	117	470591	25.00	ug/L	0.00
60) 1,4-Dichlorobenzene-d4	13.554	152	203859	25.00	ug/L	0.00
System Monitoring Compounds						
4) Vinyl Chloride-d3	2.355	65	189743	25.65	ug/L	0.00
Spiked Amount	25.000	Range 30 - 150	Recovery =	102.60%		
7) Chloroethane-d5	2.891	69	170300	26.30	ug/L	0.00
Spiked Amount	25.000	Range 30 - 150	Recovery =	105.20%		
10) 1,1-Dichloroethene-d2	4.019	63	228272	17.87	ug/L	0.00
Spiked Amount	25.000	Range 45 - 110	Recovery =	71.48%		
20) 2-Butanone-d5	7.074	46	81130	49.26	ug/L	0.00
Spiked Amount	50.000	Range 20 - 135	Recovery =	98.52%		
24) Chloroform-d	7.647	84	317355	23.44	ug/L	0.00
Spiked Amount	25.000	Range 40 - 150	Recovery =	93.76%		
26) 1,2-Dichloroethane-d4	8.305	65	193632	24.50	ug/L	0.00
Spiked Amount	25.000	Range 70 - 130	Recovery =	98.00%		
29) Benzene-d6	8.274	84	620128	24.79	ug/L	0.00
Spiked Amount	25.000	Range 20 - 135	Recovery =	99.16%		
33) 1,2-Dichloropropane-d6	9.274	67	182390	25.27	ug/L	0.00
Spiked Amount	25.000	Range 70 - 120	Recovery =	101.08%		
37) Toluene-d8	10.323	98	578771	24.03	ug/L	0.00
Spiked Amount	25.000	Range 30 - 130	Recovery =	96.12%		
38) trans-1,3-Dichloroprop...	10.579	79	82470	22.16	ug/L	0.00
Spiked Amount	25.000	Range 30 - 135	Recovery =	88.64%		
39) 2-Hexanone-d5	10.920	63	68110	48.23	ug/L	0.00
Spiked Amount	50.000	Range 20 - 135	Recovery =	96.46%		
48) 1,1,2,2-Tetrachloroeth...	12.688	84	150624	23.33	ug/L	0.00
Spiked Amount	25.000	Range 45 - 120	Recovery =	93.32%		
61) 1,2-Dichlorobenzene-d4	13.853	152	180790	24.94	ug/L	0.00
Spiked Amount	25.000	Range 75 - 120	Recovery =	99.76%		

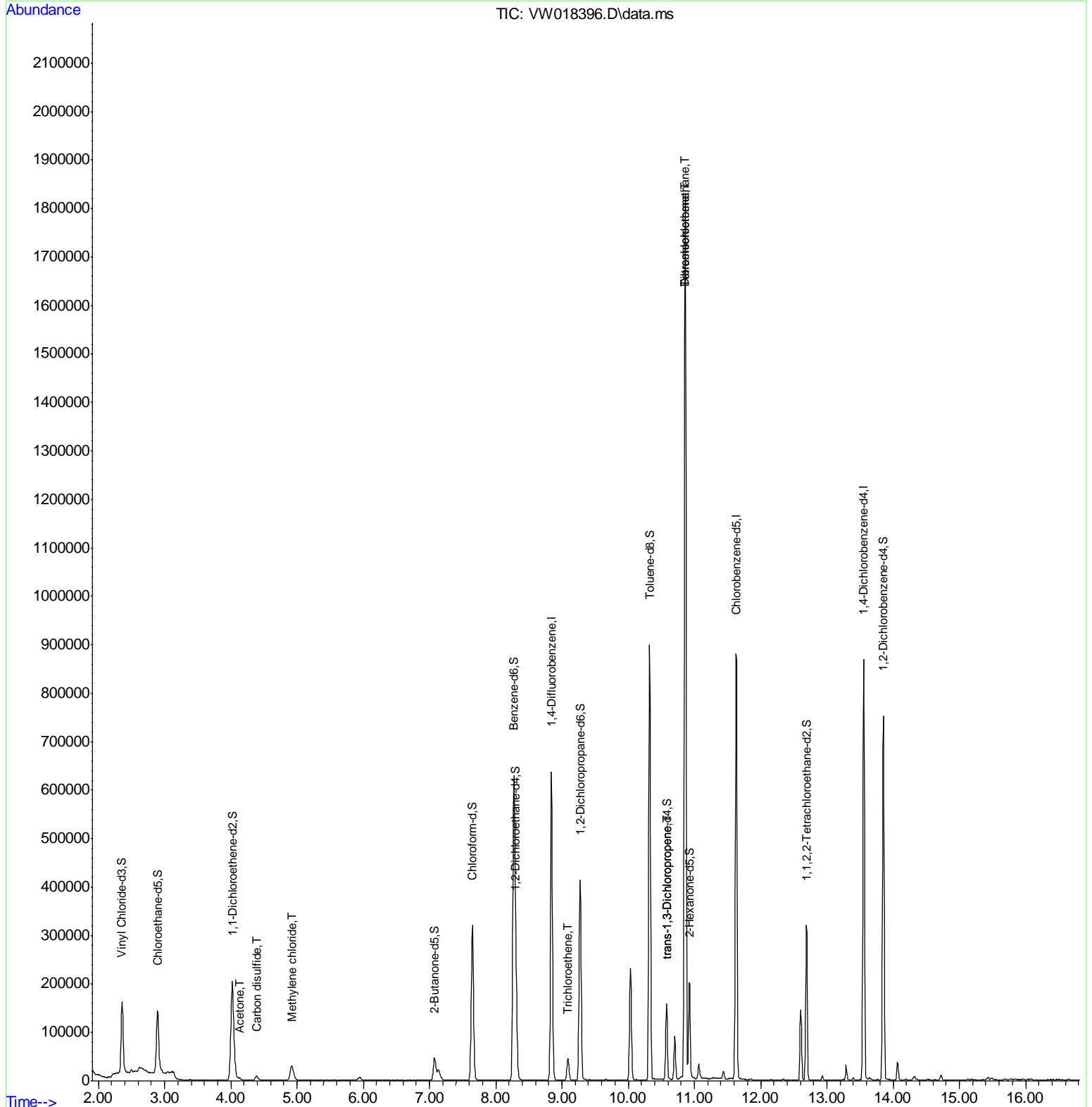
Target Compounds						Qvalue
13) Acetone	4.129	43	5682	4.80	ug/L	78
14) Carbon disulfide	4.391	76	20495	1.02	ug/L	96
16) Methylene chloride	4.921	84	26184	3.00	ug/L	91
35) Trichloroethene	9.091	95	15321	2.03	ug/L	96
45) trans-1,3-Dichloropropene	10.579	75	4512	0.45	ug/L	86
47) Tetrachloroethene	10.859	164	394392	68.98	ug/L	89
50) Dibromochloromethane	10.859	129	369022	58.87	ug/L #	8

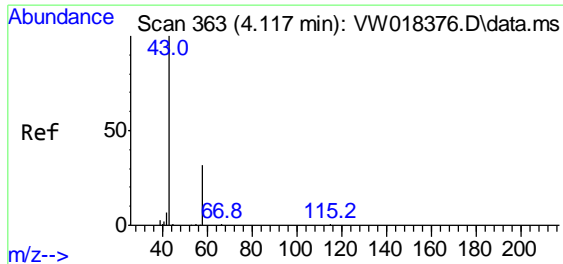
(#) = qualifier out of range (m) = manual integration (+) = signals summed

Data Path : Z:\voasrv\HPCHEM1\MSVOA_W\Data\VW031921\
 Data File : VW018396.D
 Acq On : 19 Mar 2021 18:05
 Operator : SY/VA
 Sample : M1698-09
 Misc : 5.50G/10ML/MSVOA_W/SOIL
 ALS Vial : 31 Sample Multiplier: 1

Instrument :
 MSVOA_W
 Client Sampled :
 BG4H3

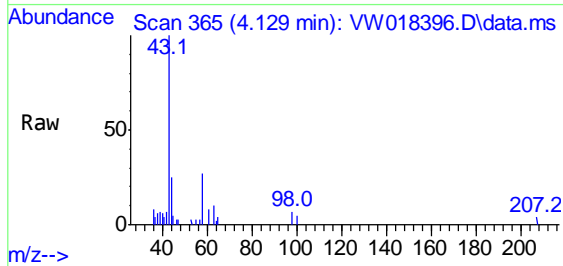
Quant Time: Mar 20 01:43:56 2021
 Quant Method : Z:\voasrv\HPCHEM1\MSVOA_W\Method\SOM2WLM031921S.M
 Quant Title : VOC Analysis
 QLast Update : Sat Mar 20 01:36:44 2021
 Response via : Initial Calibration



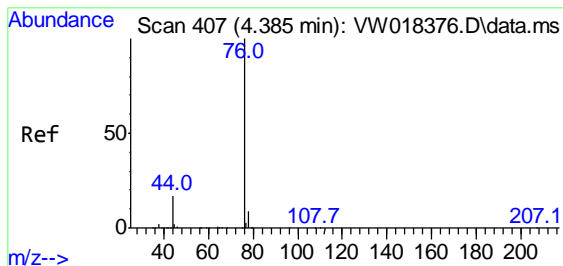
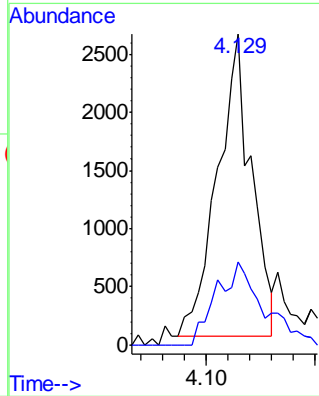
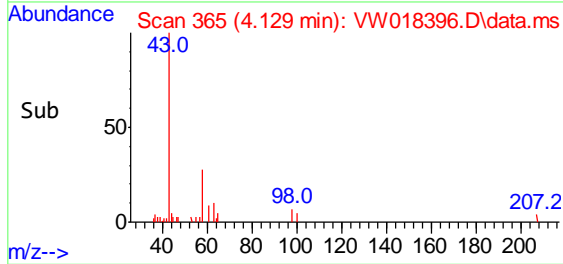


#13
 Acetone
 Concen: 4.80 ug/L
 RT: 4.129 min Scan# 365
 Delta R.T. 0.012 min
 Lab File: VW018396.D
 Acq: 19 Mar 2021 18:05

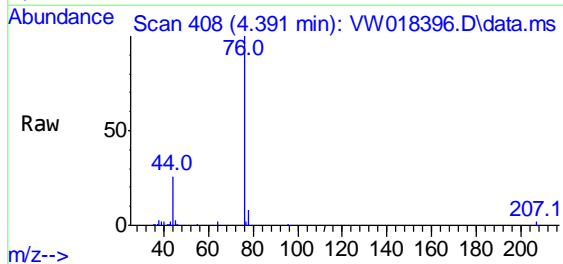
Instrument :
 MSVOA_W
ClientSampled :
 BG4H3



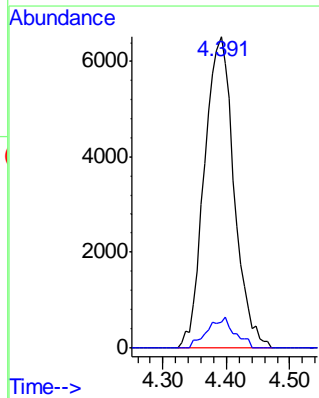
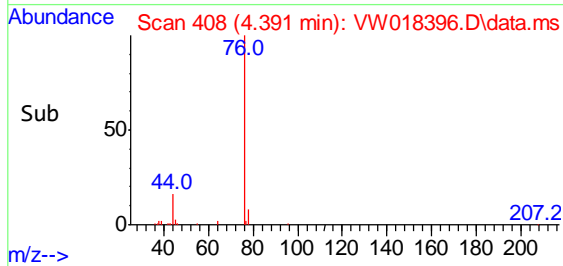
Tgt Ion: 43 Resp: 5682
 Ion Ratio Lower Upper
 43 100
 58 18.8 0.0 62.2

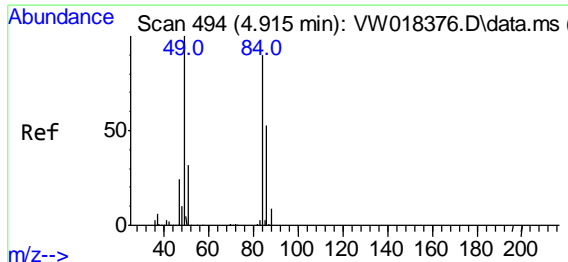


#14
 Carbon disulfide
 Concen: 1.02 ug/L
 RT: 4.391 min Scan# 408
 Delta R.T. 0.006 min
 Lab File: VW018396.D
 Acq: 19 Mar 2021 18:05



Tgt Ion: 76 Resp: 20495
 Ion Ratio Lower Upper
 76 100
 78 8.0 7.4 11.2



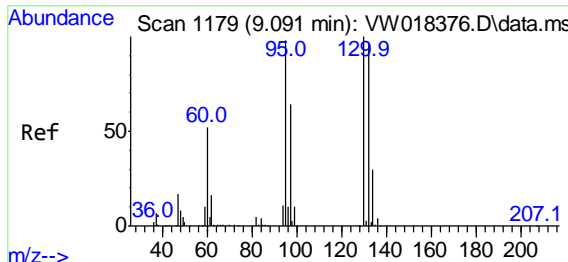
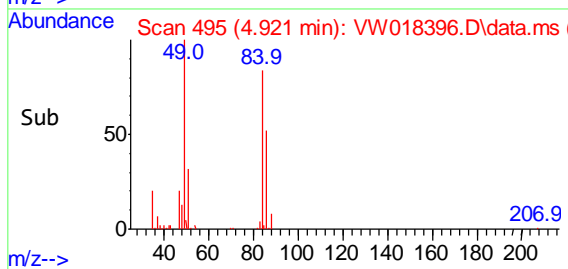
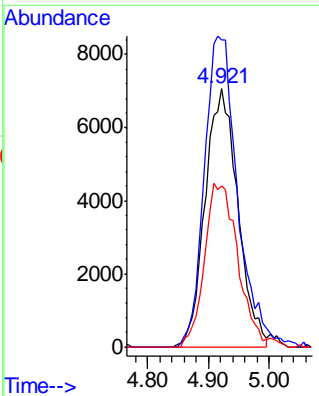
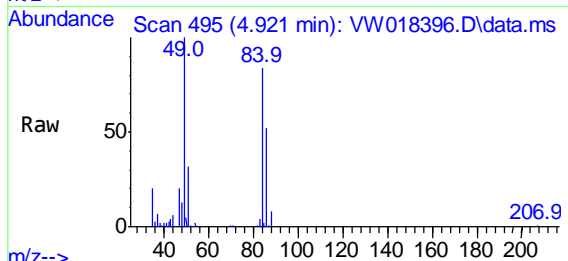


#16
 Methylene chloride
 Concen: 3.00 ug/L
 RT: 4.921 min Scan# 495
 Delta R.T. 0.006 min
 Lab File: VW018396.D
 Acq: 19 Mar 2021 18:05

Instrument :
 MSVOA_W
 ClientSampled :
 BG4H3

Tgt Ion: 84 Resp: 26184

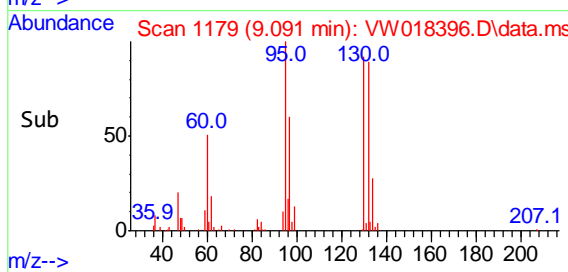
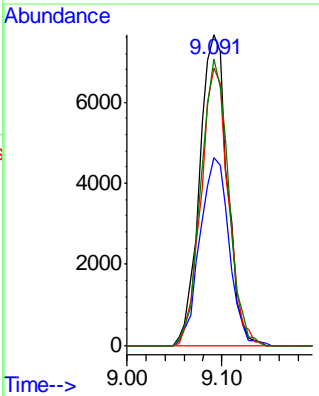
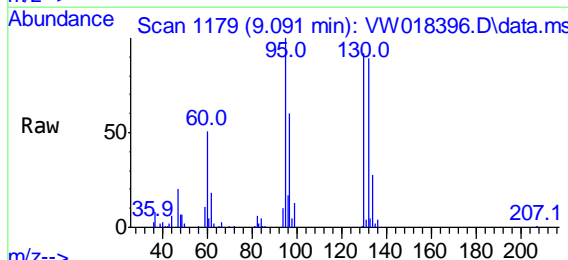
Ion	Ratio	Lower	Upper
84	100		
49	118.8	74.4	138.2
86	62.4	46.1	85.7

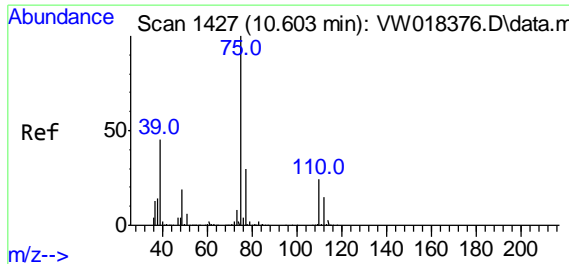


#35
 Trichloroethene
 Concen: 2.03 ug/L
 RT: 9.091 min Scan# 1179
 Delta R.T. -0.000 min
 Lab File: VW018396.D
 Acq: 19 Mar 2021 18:05

Tgt Ion: 95 Resp: 15321

Ion	Ratio	Lower	Upper
95	100		
97	63.0	44.4	82.4
132	88.0	65.9	122.5
130	91.7	67.4	125.2

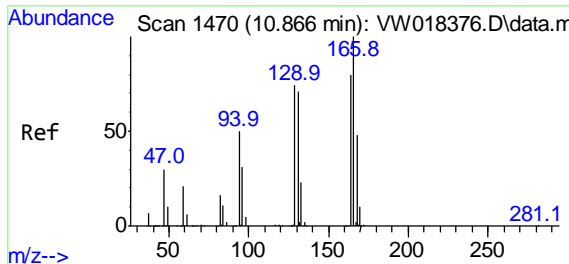
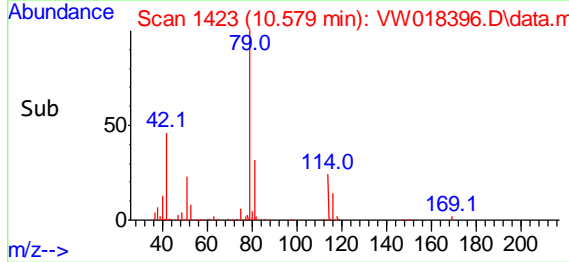
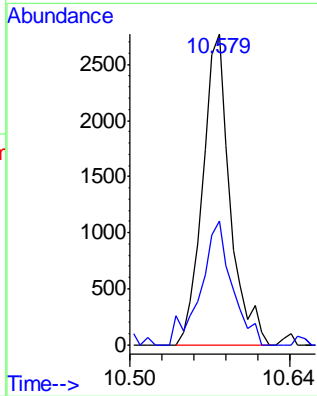
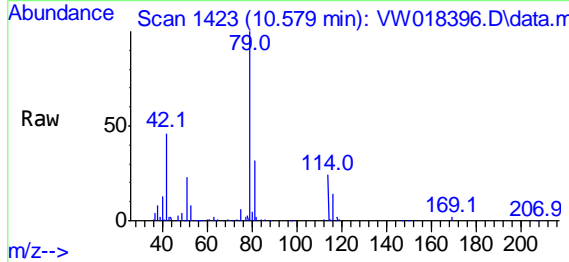




#45
 trans-1,3-Dichloropropene
 Concen: 0.45 ug/L
 RT: 10.579 min Scan# 1423
 Delta R.T. -0.024 min
 Lab File: VW018396.D
 Acq: 19 Mar 2021 18:05

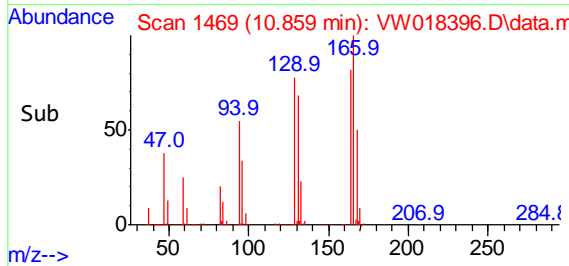
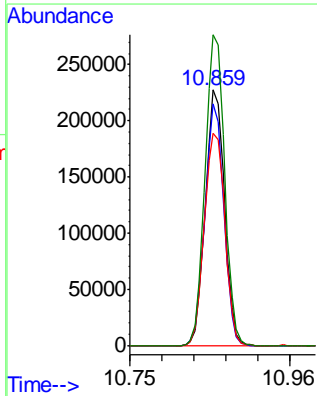
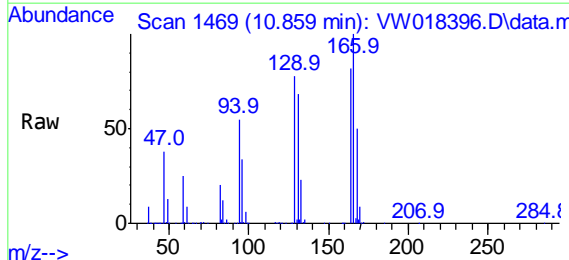
Instrument :
 MSVOA_W
 ClientSampleId :
 BG4H3

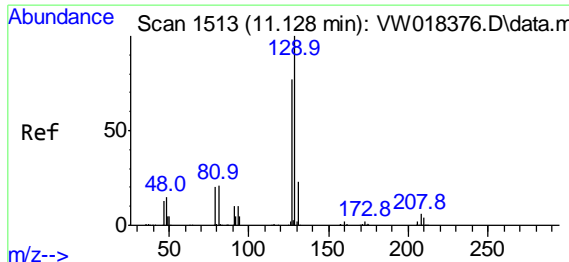
Tgt Ion: 75 Resp: 4512
 Ion Ratio Lower Upper
 75 100
 77 39.9 22.6 42.0



#47
 Tetrachloroethene
 Concen: 68.98 ug/L
 RT: 10.859 min Scan# 1469
 Delta R.T. -0.006 min
 Lab File: VW018396.D
 Acq: 19 Mar 2021 18:05

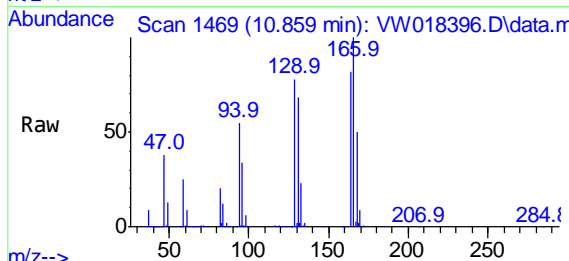
Tgt Ion:164 Resp: 394392
 Ion Ratio Lower Upper
 164 100
 129 94.5 68.8 127.8
 131 83.0 68.3 126.8
 166 121.6 95.4 177.2





#50
 Dibromochloromethane
 Concen: 58.87 ug/L
 RT: 10.859 min Scan# 1469
 Delta R.T. -0.268 min
 Lab File: VW018396.D
 Acq: 19 Mar 2021 18:05

Instrument :
 MSVOA_W
ClientSampled :
 BG4H3



Tgt Ion:129 Resp: 369022
 Ion Ratio Lower Upper
 129 100
 127 0.1 58.0 107.6#

