

Data Path : Z:\voasrv\HPCHEM1\MSVOA\_W\Data\VW031921\  
 Data File : VW018385.D  
 Acq On : 19 Mar 2021 13:41  
 Operator : SY/VA  
 Sample : M1685-08  
 Misc : 5.72G/10ML/MSVOA\_W/SOIL  
 ALS Vial : 20 Sample Multiplier: 1

Instrument :  
 MSVOA\_W  
 ClientSampleId :  
 BG494

Integration Parameters: LSCINT.P

Integrator: RTE  
 Smoothing : OFF Filtering: 5  
 Sampling : 1 Min Area: 0 % of largest Peak  
 Start Thrs: 0.2 Max Peaks: 100  
 Stop Thrs : 0 Peak Location: TOP

If leading or trailing edge < 100 prefer < Baseline drop else tangent >  
 Peak separation: 5

Method : Z:\voasrv\HPCHEM1\MSVOA\_W\Method\SOM2WLM031921S.M  
 Title : VOC Analysis

Signal : TIC: VW018385.D\data.ms

peak #	R.T. min	first scan	max scan	last scan	PK TY	peak height	corr. area	corr. % max.	% of total
1	2.233	47	54	56	rBV	6792	16084	1.23%	0.186%
2	2.355	69	74	87	rVB	109000	233367	17.91%	2.700%
3	2.891	155	162	175	rVB	88755	226167	17.36%	2.617%
4	3.391	242	244	246	rVV3	1438	1210	0.09%	0.014%
5	3.440	250	252	255	rBV3	1043	810	0.06%	0.009%
6	3.464	255	256	260	rVB4	866	1087	0.08%	0.013%
7	3.727	296	299	301	rBV3	713	773	0.06%	0.009%
8	3.903	322	328	335	rBV5	1315	3100	0.24%	0.036%
9	4.019	335	347	358	rBV	144208	465730	35.74%	5.389%
10	4.385	396	407	418	rBV2	11350	36449	2.80%	0.422%
11	4.733	461	464	467	rBV4	940	1370	0.11%	0.016%
12	4.818	471	478	481	rVB6	729	1613	0.12%	0.019%
13	4.915	481	494	511	rBV2	16562	65366	5.02%	0.756%
14	5.568	600	601	604	rVV2	715	1007	0.08%	0.012%
15	5.610	606	608	611	rVV3	834	1032	0.08%	0.012%
16	5.726	624	627	628	rVV2	792	835	0.06%	0.010%
17	5.781	628	636	649	rVV4	4890	18247	1.40%	0.211%
18	5.940	662	662	670	rVV5	6674	20004	1.54%	0.231%
19	6.720	786	790	793	rBV5	615	808	0.06%	0.009%
20	6.872	810	815	816	rBV5	1188	1468	0.11%	0.017%
21	6.897	816	819	826	rVV6	1963	4461	0.34%	0.052%
22	7.074	839	848	863	rBV	53448	169221	12.99%	1.958%
23	7.439	904	908	911	rBV6	472	880	0.07%	0.010%
24	7.543	919	925	926	rBV4	1187	2138	0.16%	0.025%
25	7.647	932	942	955	rBV	222294	545309	41.85%	6.310%
26	7.951	988	992	999	rVB6	1595	2997	0.23%	0.035%
27	8.275	1036	1045	1062	rBV2	432889	1303038	100.00%	15.078%
28	8.555	1085	1091	1095	rBV7	2787	5670	0.44%	0.066%
29	8.701	1109	1115	1118	rBV5	3155	5469	0.42%	0.063%
30	8.842	1130	1138	1152	rVV	422531	841518	64.58%	9.737%
31	9.037	1166	1170	1171	rBV4	1241	1742	0.13%	0.020%
32	9.073	1171	1176	1182	rVB6	4167	8653	0.66%	0.100%
33	9.201	1193	1197	1200	rBV5	859	1308	0.10%	0.015%
34	9.274	1200	1209	1219	rBV	287916	586364	45.00%	6.785%
35	9.409	1227	1231	1238	rBV4	3482	7066	0.54%	0.082%
36	9.524	1246	1250	1251	rBV3	847	898	0.07%	0.010%

Data Path : Z:\voasrv\HPCHEM1\MSVOA\_W\Data\VW031921\  
 Data File : VW018385.D  
 Acq On : 19 Mar 2021 13:41  
 Operator : SY/VA  
 Sample : M1685-08  
 Misc : 5.72G/10ML/MSVOA\_W/SOIL  
 ALS Vial : 20 Sample Multiplier: 1

Instrument :  
 MSVOA\_W  
 ClientSampleId :  
 BG494

Integration Parameters: LSCINT.P

Integrator: RTE  
 Smoothing : OFF  
 Sampling : 1  
 Start Thrs : 0.2  
 Stop Thrs : 0

Filtering: 5  
 Min Area: 0 % of largest Peak  
 Max Peaks: 100  
 Peak Location: TOP

If leading or trailing edge < 100 prefer < Baseline drop else tangent >  
 Peak separation: 5

Method : Z:\voasrv\HPCHEM1\MSVOA\_W\Method\SOM2WLM031921S.M  
 Title : VOC Analysis

37	9.665	1269	1273	1280	rVB3	2485	4739	0.36%	0.055%
38	9.726	1280	1283	1286	rBV2	654	1048	0.08%	0.012%
39	9.793	1291	1294	1295	rBV2	665	831	0.06%	0.010%
40	9.927	1313	1316	1318	rBV3	821	923	0.07%	0.011%
41	10.036	1326	1334	1343	rBV	144129	260878	20.02%	3.019%
42	10.323	1373	1381	1390	rBV	557308	982134	75.37%	11.364%
43	10.500	1401	1410	1411	rBV7	2133	4096	0.31%	0.047%
44	10.579	1416	1423	1430	rBV	87269	152804	11.73%	1.768%
45	10.701	1438	1443	1450	rVB	15680	27239	2.09%	0.315%
46	10.774	1450	1455	1456	rBV4	1692	2418	0.19%	0.028%
47	10.792	1456	1458	1459	rBV	1410	997	0.08%	0.012%
48	10.927	1473	1480	1488	rBV	203033	343584	26.37%	3.976%
49	11.073	1497	1504	1510	rBV6	12870	24379	1.87%	0.282%
50	11.274	1534	1537	1540	rBV5	1590	2913	0.22%	0.034%
51	11.518	1574	1577	1578	rBV2	1515	1433	0.11%	0.017%
52	11.628	1588	1595	1606	rBV	457380	780339	59.89%	9.029%
53	11.835	1625	1629	1630	rBV4	1299	1661	0.13%	0.019%
54	11.981	1652	1653	1657	rVB3	802	853	0.07%	0.010%
55	12.018	1657	1659	1661	rBV2	974	1031	0.08%	0.012%
56	12.103	1668	1673	1675	rBV4	645	1091	0.08%	0.013%
57	12.182	1680	1686	1691	rVB8	2353	5406	0.41%	0.063%
58	12.231	1691	1694	1698	rBV4	1386	1731	0.13%	0.020%
59	12.341	1707	1712	1718	rVB4	5470	10353	0.79%	0.120%
60	12.463	1729	1732	1733	rVV3	1078	1162	0.09%	0.013%
61	12.609	1746	1756	1762	rBV	52707	94523	7.25%	1.094%
62	12.695	1762	1770	1777	rBV	237538	406710	31.21%	4.706%
63	12.756	1777	1780	1783	rVB4	1120	1447	0.11%	0.017%
64	12.932	1800	1809	1818	rVB4	4237	9911	0.76%	0.115%
65	13.036	1823	1826	1828	rBV3	1160	1454	0.11%	0.017%
66	13.164	1846	1847	1849	rVV2	995	859	0.07%	0.010%
67	13.201	1849	1853	1856	rVB5	2084	3187	0.24%	0.037%
68	13.292	1858	1868	1875	rVB6	6732	14751	1.13%	0.171%
69	13.402	1879	1886	1892	rBV7	5933	13138	1.01%	0.152%
70	13.457	1892	1895	1896	rBV3	1011	882	0.07%	0.010%
71	13.499	1900	1902	1905	rBV4	1360	1704	0.13%	0.020%
72	13.554	1905	1911	1918	rBV	249932	404415	31.04%	4.680%
73	13.646	1924	1926	1928	rBV2	1359	1290	0.10%	0.015%
74	13.761	1940	1945	1949	rBV3	2438	4529	0.35%	0.052%
75	13.853	1953	1960	1967	rBV	230087	373843	28.69%	4.326%
76	13.975	1978	1980	1981	rVB2	1503	873	0.07%	0.010%

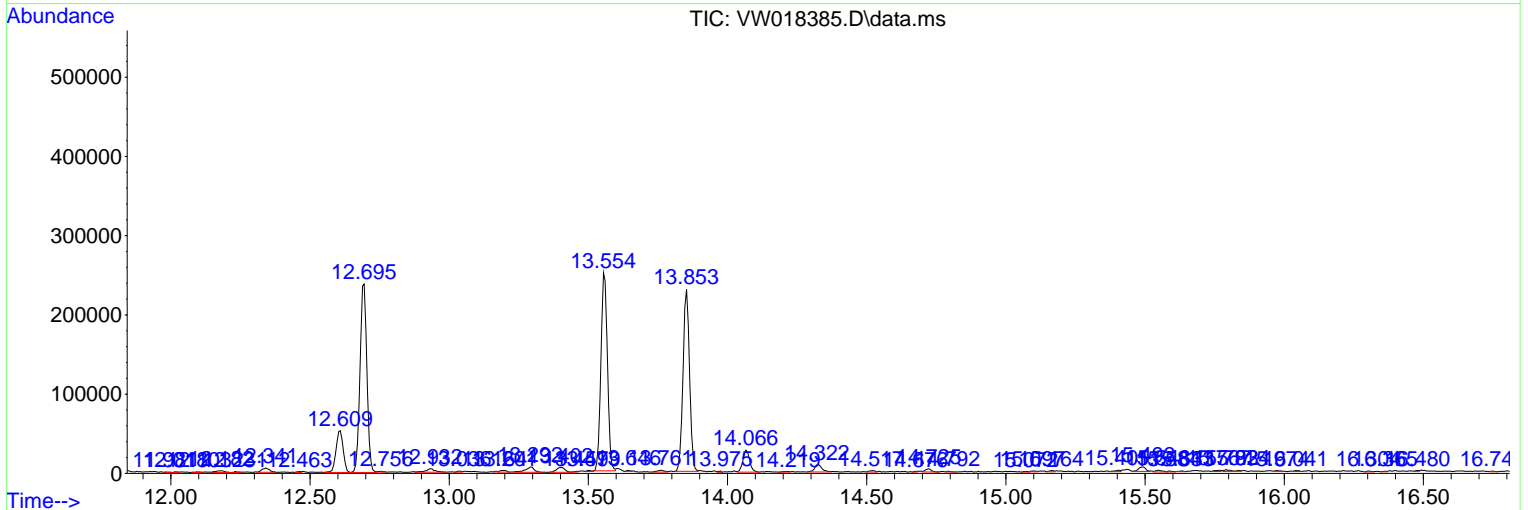
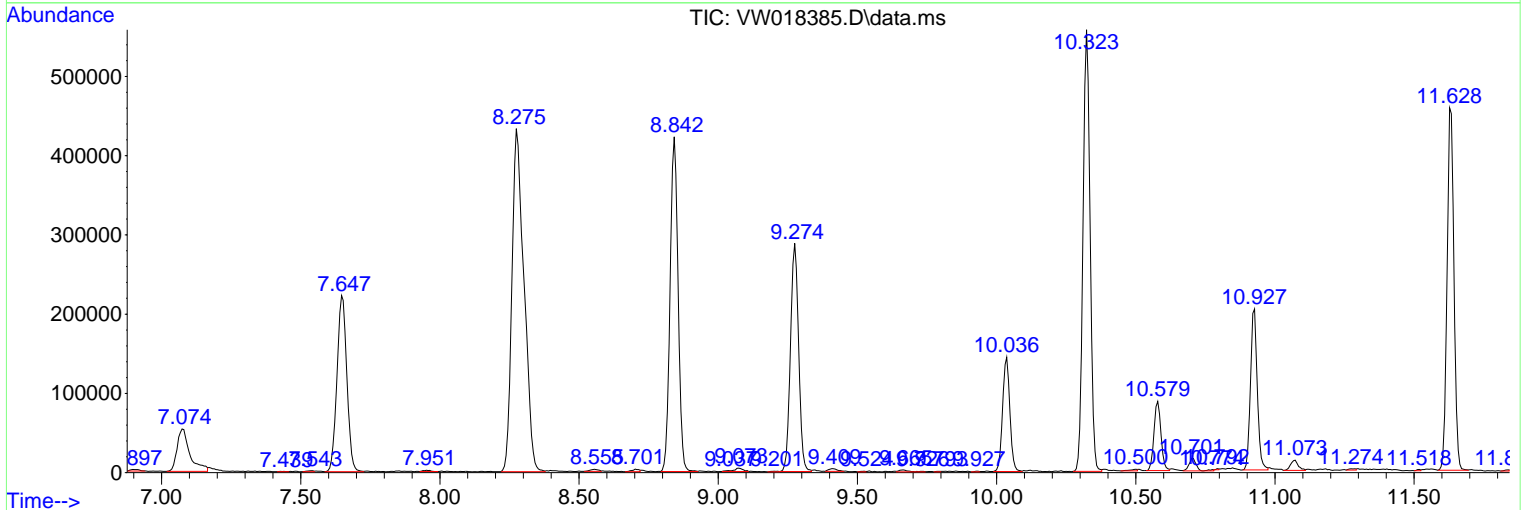
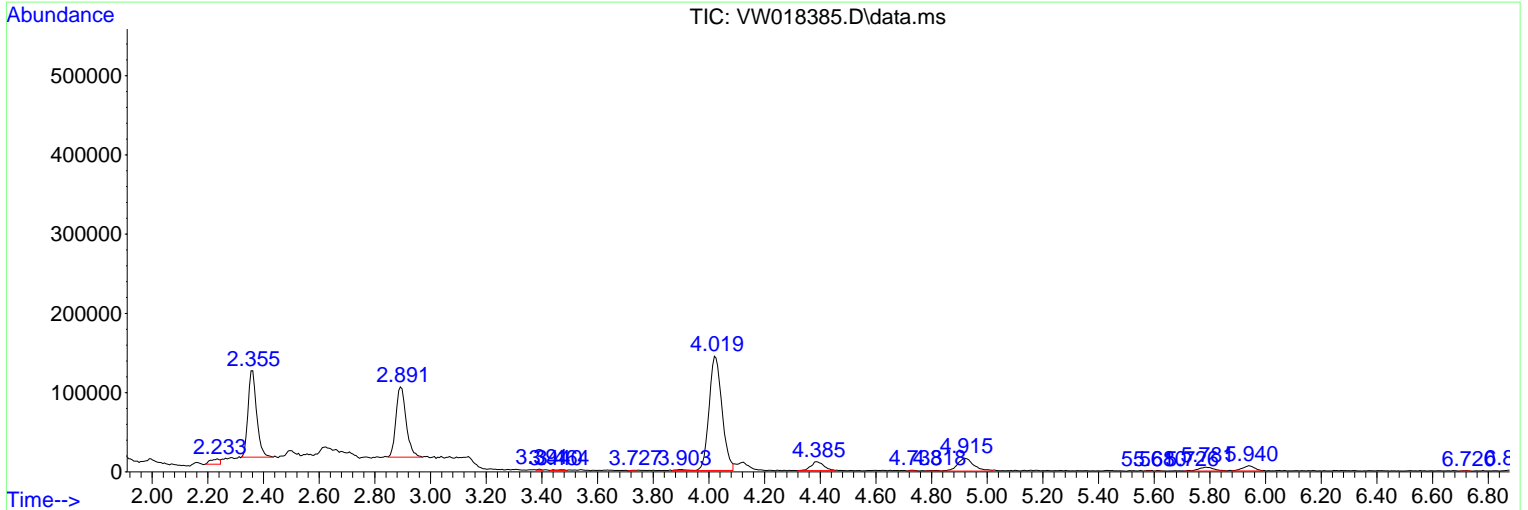


Data Path : Z:\voasrv\HPCHEM1\MSVOA\_W\Data\VW031921\  
 Data File : VW018385.D  
 Acq On : 19 Mar 2021 13:41  
 Operator : SY/VA  
 Sample : M1685-08  
 Misc : 5.72G/10ML/MSVOA\_W/SOIL  
 ALS Vial : 20 Sample Multiplier: 1

**Instrument :**  
 MSVOA\_W  
**ClientSampleId :**  
 BG494

Quant Method : Z:\voasrv\HPCHEM1\MSVOA\_W\Method\SOM2WLM031921S.M  
 Quant Title : VOC Analysis

TIC Library : C:\DATABASE\NIST11.L  
 TIC Integration Parameters: LSCINT.P



Data Path : Z:\voasrv\HPCHEM1\MSVOA\_W\Data\VW031921\  
 Data File : VW018385.D  
 Acq On : 19 Mar 2021 13:41  
 Operator : SY/VA  
 Sample : M1685-08  
 Misc : 5.72G/10ML/MSVOA\_W/SOIL  
 ALS Vial : 20 Sample Multiplier: 1

Instrument :  
 MSVOA\_W  
 ClientSampled :  
 BG494

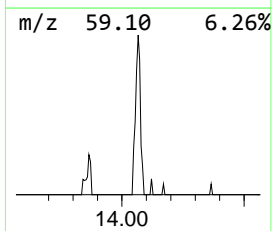
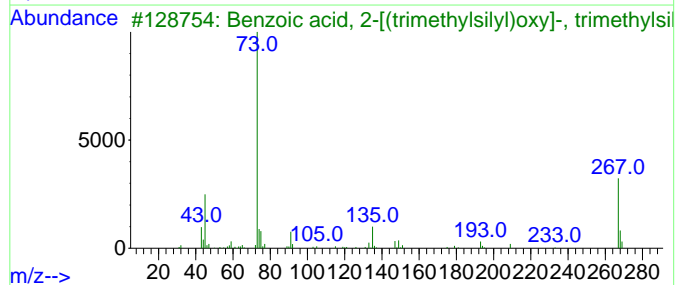
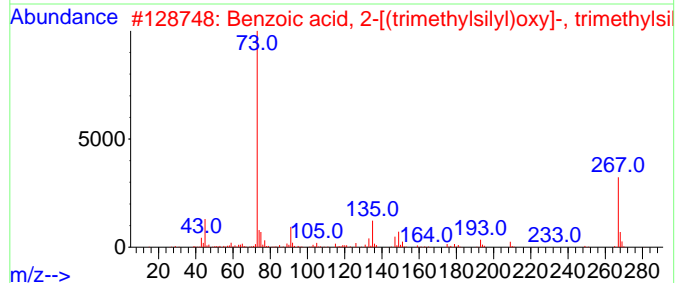
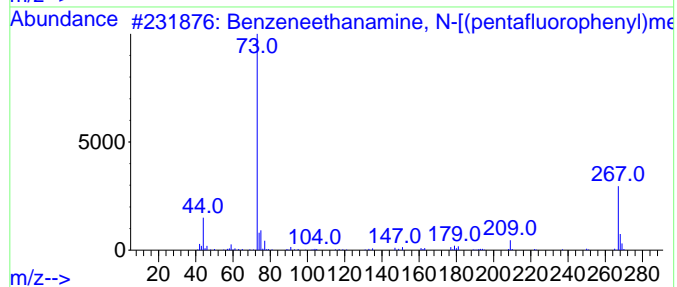
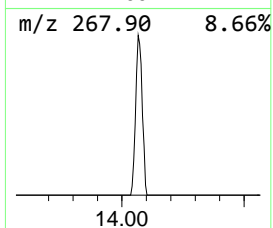
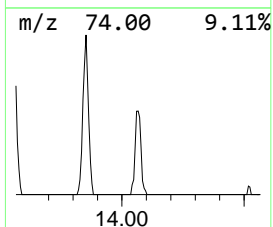
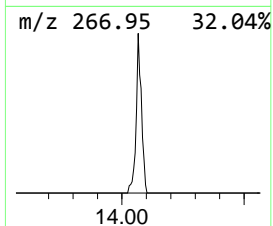
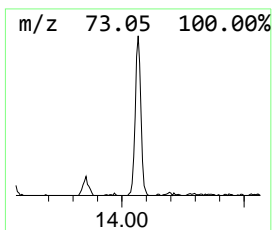
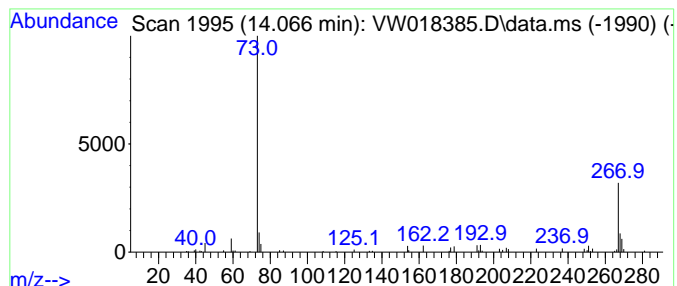
Quant Method : Z:\voasrv\HPCHEM1\MSVOA\_W\Method\SOM2WLM031921S.M  
 Quant Title : VOC Analysis

TIC Library : C:\DATABASE\NIST11.L  
 TIC Integration Parameters: LSCINT.P

\*\*\*\*\*  
 Peak Number 3 unknown-01 Concentration Rank 3

R.T.	EstConc	Area	Relative to ISTD	R.T.
14.066	2.85 ug/L	46141	1,4-Dichlorobenzene-d4	13.560

Hit#	of	5	Tentative ID	MW	MolForm	CAS#	Qual
1			Benzeneethanamine, N-[(pentafluoro...]	475	C21H26F5NO2Si2	055429-85-1	42
2			Benzoic acid, 2-[(trimethylsilyl...]	282	C13H22O3Si2	003789-85-3	36
3			Benzoic acid, 2-[(trimethylsilyl...]	282	C13H22O3Si2	003789-85-3	36
4			1-(3-Chlorophenyl)piperazine, 4-...	268	C13H21ClN2Si	1000373-99-3	10
5			1-Boraindane, 3-methyl-1-[1-(tri...]	266	C17H23BSi	190316-36-0	10



Data Path : Z:\voasrv\HPCHEM1\MSVOA\_W\Data\VW031921\  
Data File : VW018385.D  
Acq On : 19 Mar 2021 13:41  
Operator : SY/VA  
Sample : M1685-08  
Misc : 5.72G/10ML/MSVOA\_W/SOIL  
ALS Vial : 20 Sample Multiplier: 1

Instrument :  
MSVOA\_W  
ClientSampleId :  
BG494

Quant Method : Z:\voasrv\HPCHEM1\MSVOA\_W\Method\SOM2WLM031921S.M  
Quant Title : VOC Analysis

TIC Library : C:\DATABASE\NIST11.L  
TIC Integration Parameters: LSCINT.P

TIC Top Hit name	RT	EstConc	Units	Response	--Internal Standard--			
					#	RT	Resp	Conc
-----	-----	-----	-----	-----	-----	-----	-----	-----
unknown-01	14.066	2.9	ug/L	46141	3	13.560	404415	25.0