

Data Path : Z:\voasrv\HPCHEM1\MSVOA\_W\Data\VW031921\  
 Data File : VW018386.D  
 Acq On : 19 Mar 2021 14:05  
 Operator : SY/VA  
 Sample : M1685-09  
 Misc : 4.89G/10ML/MSVOA\_W/SOIL  
 ALS Vial : 21 Sample Multiplier: 1

Instrument :  
 MSVOA\_W  
 ClientSampled :  
 BG495

Integration Parameters: LSCINT.P

Integrator: RTE  
 Smoothing : OFF Filtering: 5  
 Sampling : 1 Min Area: 0 % of largest Peak  
 Start Thrs: 0.2 Max Peaks: 100  
 Stop Thrs : 0 Peak Location: TOP

If leading or trailing edge < 100 prefer < Baseline drop else tangent >  
 Peak separation: 5

Method : Z:\voasrv\HPCHEM1\MSVOA\_W\Method\SOM2WLM031921S.M  
 Title : VOC Analysis

Signal : TIC: VW018386.D\data.ms

peak #	R.T. min	first scan	max scan	last scan	PK TY	peak height	corr. area	corr. % max.	% of total
1	2.160	39	42	47	rBV4	7710	12194	0.75%	0.113%
2	2.355	69	74	88	rVB	137610	292060	17.85%	2.700%
3	2.891	156	162	175	rVB	119759	293881	17.97%	2.717%
4	3.324	232	233	237	rVB3	1384	1348	0.08%	0.012%
5	3.385	237	243	248	rBV7	1546	3191	0.20%	0.029%
6	3.586	274	276	278	rVB2	1021	833	0.05%	0.008%
7	3.806	308	312	315	rVB4	680	1055	0.06%	0.010%
8	3.897	320	327	328	rBV7	928	2195	0.13%	0.020%
9	4.019	335	347	359	rBV	185879	583175	35.65%	5.391%
10	4.117	360	363	373	rVV	12405	32038	1.96%	0.296%
11	4.208	377	378	386	rVB5	931	1525	0.09%	0.014%
12	4.318	393	396	398	rBV2	862	953	0.06%	0.009%
13	4.385	398	407	419	rVB	23645	68799	4.21%	0.636%
14	4.507	426	427	434	rVB4	762	1114	0.07%	0.010%
15	4.611	442	444	447	rVB2	1218	1034	0.06%	0.010%
16	4.916	483	494	509	rBV3	23460	88647	5.42%	0.819%
17	5.080	518	521	524	rBV2	559	886	0.05%	0.008%
18	5.159	532	534	538	rVB3	868	1100	0.07%	0.010%
19	5.275	550	553	555	rBV4	741	941	0.06%	0.009%
20	5.617	605	609	614	rVB4	750	1232	0.08%	0.011%
21	5.787	625	637	647	rBV3	6812	21224	1.30%	0.196%
22	5.940	653	662	671	rVV5	6327	19308	1.18%	0.178%
23	6.147	692	696	700	rVV4	762	1369	0.08%	0.013%
24	6.299	717	721	724	rBV4	804	1231	0.08%	0.011%
25	6.909	814	821	828	rBV6	2770	7657	0.47%	0.071%
26	7.074	839	848	859	rBV	51123	155252	9.49%	1.435%
27	7.647	932	942	955	rBV	282706	704118	43.05%	6.509%
28	7.952	985	992	995	rBV5	1692	3823	0.23%	0.035%
29	8.275	1035	1045	1062	rVV2	552672	1635763	100.00%	15.122%
30	8.555	1084	1091	1099	rVV6	4094	10938	0.67%	0.101%
31	8.622	1101	1102	1107	rVB4	912	844	0.05%	0.008%
32	8.701	1108	1115	1125	rBV8	3928	10862	0.66%	0.100%
33	8.842	1129	1138	1150	rBV	501446	988905	60.46%	9.142%
34	9.043	1165	1171	1172	rBV4	1545	2833	0.17%	0.026%
35	9.079	1172	1177	1182	rVB5	4541	8989	0.55%	0.083%
36	9.274	1199	1209	1219	rBV	365549	741522	45.33%	6.855%

Data Path : Z:\voasrv\HPCHEM1\MSVOA\_W\Data\VW031921\  
 Data File : VW018386.D  
 Acq On : 19 Mar 2021 14:05  
 Operator : SY/VA  
 Sample : M1685-09  
 Misc : 4.89G/10ML/MSVOA\_W/SOIL  
 ALS Vial : 21 Sample Multiplier: 1

Instrument :  
 MSVOA\_W  
 ClientSampleId :  
 BG495

Integration Parameters: LSCINT.P

Integrator: RTE  
 Smoothing : OFF Filtering: 5  
 Sampling : 1 Min Area: 0 % of largest Peak  
 Start Thrs: 0.2 Max Peaks: 100  
 Stop Thrs : 0 Peak Location: TOP

If leading or trailing edge < 100 prefer < Baseline drop else tangent >  
 Peak separation: 5

Method : Z:\voasrv\HPCHEM1\MSVOA\_W\Method\SOM2WLM031921S.M  
 Title : VOC Analysis

37	9.409	1226	1231	1239	rVB5	4170	9209	0.56%	0.085%
38	9.543	1248	1253	1254	rBV5	716	1043	0.06%	0.010%
39	9.652	1269	1271	1279	rVB5	2122	4693	0.29%	0.043%
40	9.799	1293	1295	1298	rVV3	812	1146	0.07%	0.011%
41	9.829	1298	1300	1302	rVV3	970	1067	0.07%	0.010%
42	9.872	1304	1307	1309	rVV3	801	922	0.06%	0.009%
43	10.037	1323	1334	1343	rBV	172257	317310	19.40%	2.933%
44	10.128	1345	1349	1352	rBV5	1259	2112	0.13%	0.020%
45	10.323	1373	1381	1389	rBV	721521	1294917	79.16%	11.971%
46	10.579	1416	1423	1430	rBV	107138	185825	11.36%	1.718%
47	10.701	1438	1443	1449	rBV	15290	26617	1.63%	0.246%
48	10.805	1450	1460	1461	rBV7	3490	8690	0.53%	0.080%
49	10.921	1473	1479	1493	rVB	200399	345467	21.12%	3.194%
50	11.073	1498	1504	1509	rBV5	12240	25225	1.54%	0.233%
51	11.433	1562	1563	1568	rVB4	1851	1820	0.11%	0.017%
52	11.512	1573	1576	1577	rVV2	1930	1394	0.09%	0.013%
53	11.542	1577	1581	1585	rVV5	1489	3073	0.19%	0.028%
54	11.628	1588	1595	1607	rVV	571558	997346	60.97%	9.220%
55	11.713	1607	1609	1618	rVB7	1953	3105	0.19%	0.029%
56	11.841	1626	1630	1635	rVB8	1659	2681	0.16%	0.025%
57	12.036	1659	1662	1664	rVB2	1148	1031	0.06%	0.010%
58	12.176	1681	1685	1692	rVB6	2038	3726	0.23%	0.034%
59	12.335	1707	1711	1718	rBV5	6606	11647	0.71%	0.108%
60	12.469	1728	1733	1738	rBV8	1348	2546	0.16%	0.024%
61	12.567	1746	1749	1750	rVV2	858	843	0.05%	0.008%
62	12.609	1750	1756	1762	rVV2	50359	82604	5.05%	0.764%
63	12.695	1762	1770	1777	rVV	260311	442733	27.07%	4.093%
64	12.938	1806	1810	1816	rVB5	4797	8290	0.51%	0.077%
65	13.030	1822	1825	1829	rVB6	662	844	0.05%	0.008%
66	13.109	1836	1838	1843	rVB4	1027	1527	0.09%	0.014%
67	13.195	1846	1852	1858	rVB7	2049	4302	0.26%	0.040%
68	13.249	1858	1861	1862	rBV3	1586	1523	0.09%	0.014%
69	13.298	1862	1869	1875	rVB7	5369	12340	0.75%	0.114%
70	13.396	1881	1885	1892	rVV5	6092	12498	0.76%	0.116%
71	13.469	1895	1897	1899	rVV3	971	1173	0.07%	0.011%
72	13.505	1899	1903	1905	rVV4	1682	2477	0.15%	0.023%
73	13.554	1905	1911	1923	rVV	358503	595495	36.40%	5.505%
74	13.652	1923	1927	1930	rVB4	2235	3389	0.21%	0.031%
75	13.768	1941	1946	1948	rBV4	1504	2547	0.16%	0.024%
76	13.853	1953	1960	1966	rBV	365831	592785	36.24%	5.480%

Data Path : Z:\voasrv\HPCHEM1\MSVOA\_W\Data\VW031921\  
 Data File : VW018386.D  
 Acq On : 19 Mar 2021 14:05  
 Operator : SY/VA  
 Sample : M1685-09  
 Misc : 4.89G/10ML/MSVOA\_W/SOIL  
 ALS Vial : 21 Sample Multiplier: 1

Instrument :  
 MSVOA\_W  
 ClientSampleId :  
 BG495

Integration Parameters: LSCINT.P  
 Integrator: RTE  
 Smoothing : OFF  
 Sampling : 1  
 Start Thrs : 0.2  
 Stop Thrs : 0  
 Filtering: 5  
 Min Area: 0 % of largest Peak  
 Max Peaks: 100  
 Peak Location: TOP

If leading or trailing edge < 100 prefer < Baseline drop else tangent >  
 Peak separation: 5

Method : Z:\voasrv\HPCHEM1\MSVOA\_W\Method\SOM2WLM031921S.M  
 Title : VOC Analysis

77	14.011	1980	1986	1988	rBV6	1249	2186	0.13%	0.020%
78	14.066	1988	1995	2004	rVV2	21922	36184	2.21%	0.334%
79	14.139	2004	2007	2010	rVB5	1295	1089	0.07%	0.010%
80	14.322	2029	2037	2045	rBV7	7497	15116	0.92%	0.140%
81	14.420	2051	2053	2055	rVB2	1539	1150	0.07%	0.011%
82	14.517	2066	2069	2075	rVB7	2458	4396	0.27%	0.041%
83	14.719	2095	2102	2106	rBV7	3185	5511	0.34%	0.051%
84	14.841	2117	2122	2124	rBV4	1203	1697	0.10%	0.016%
85	14.877	2124	2128	2130	rBV3	959	1168	0.07%	0.011%
86	15.170	2174	2176	2180	rBV5	1898	2095	0.13%	0.019%
87	15.243	2186	2188	2192	rBV3	1473	1514	0.09%	0.014%
88	15.359	2204	2207	2210	rBV4	973	1668	0.10%	0.015%
89	15.395	2210	2213	2215	rVB4	1529	1593	0.10%	0.015%
90	15.432	2217	2219	2224	rVB4	2229	2687	0.16%	0.025%
91	15.487	2224	2228	2233	rVB3	3780	5926	0.36%	0.055%
92	15.548	2234	2238	2239	rBV4	1206	1604	0.10%	0.015%
93	15.682	2257	2260	2261	rBV2	1346	1074	0.07%	0.010%
94	15.755	2269	2272	2275	rVV5	1085	1529	0.09%	0.014%
95	15.786	2275	2277	2279	rVV3	1358	1534	0.09%	0.014%
96	16.182	2340	2342	2345	rVB4	1215	1411	0.09%	0.013%
97	16.212	2345	2347	2349	rBV2	1009	1279	0.08%	0.012%
98	16.261	2354	2355	2358	rVB2	1203	832	0.05%	0.008%
99	16.371	2370	2373	2375	rBV4	920	1242	0.08%	0.011%
100	16.474	2387	2390	2393	rBV5	1302	2039	0.12%	0.019%

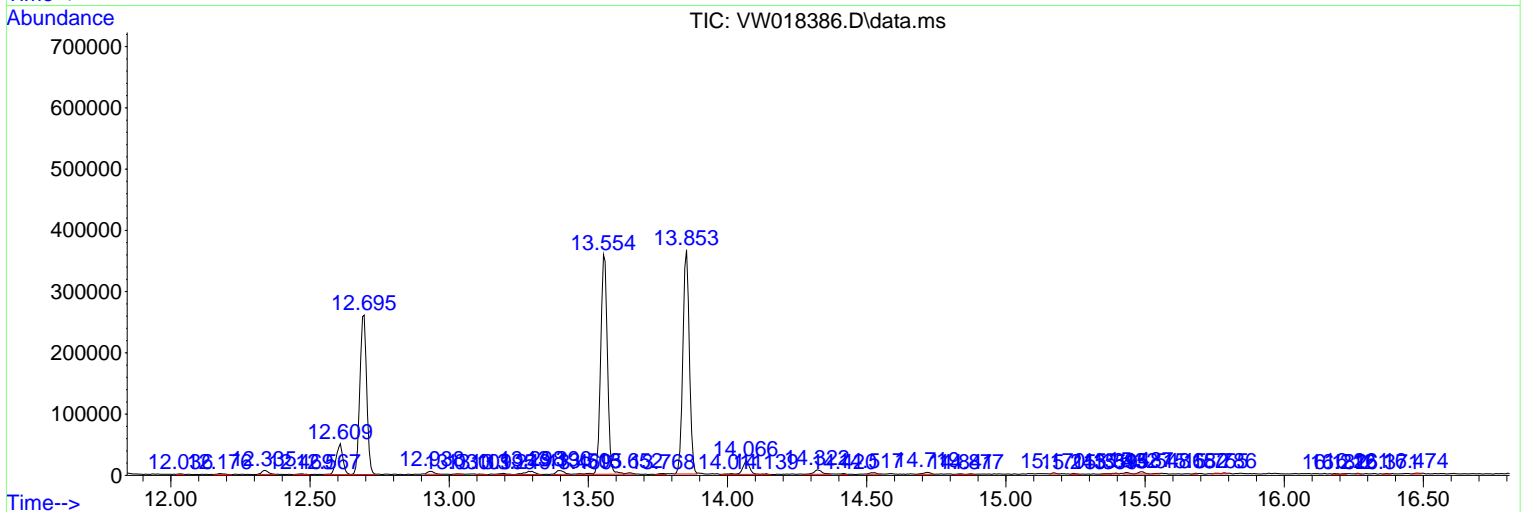
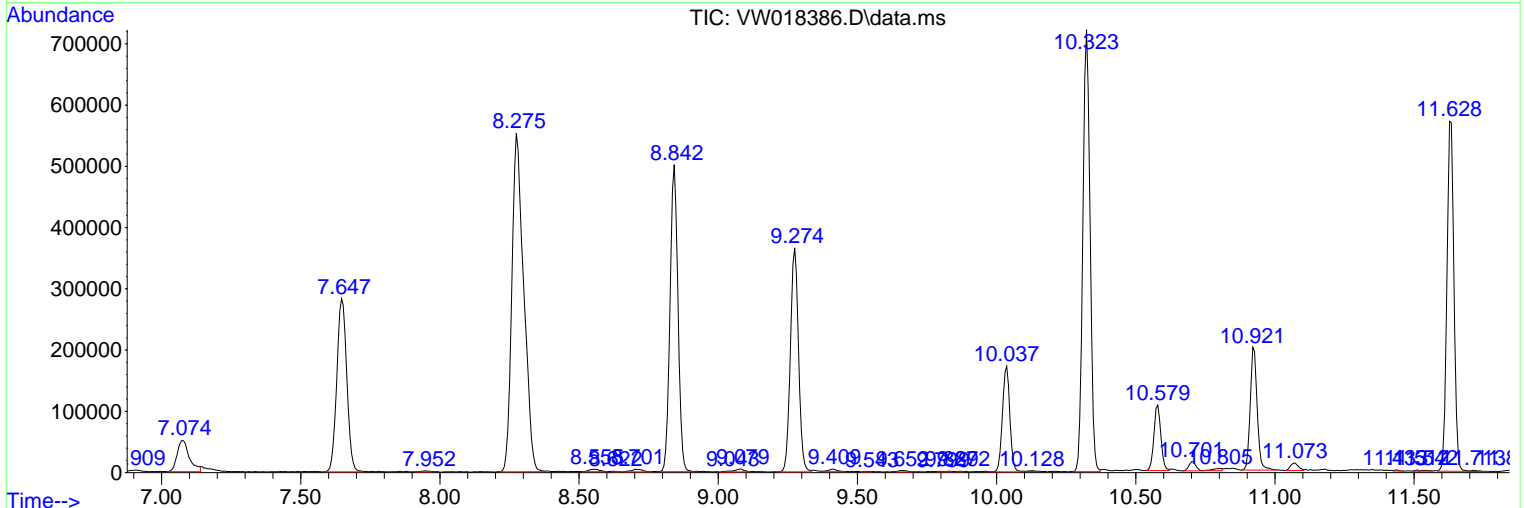
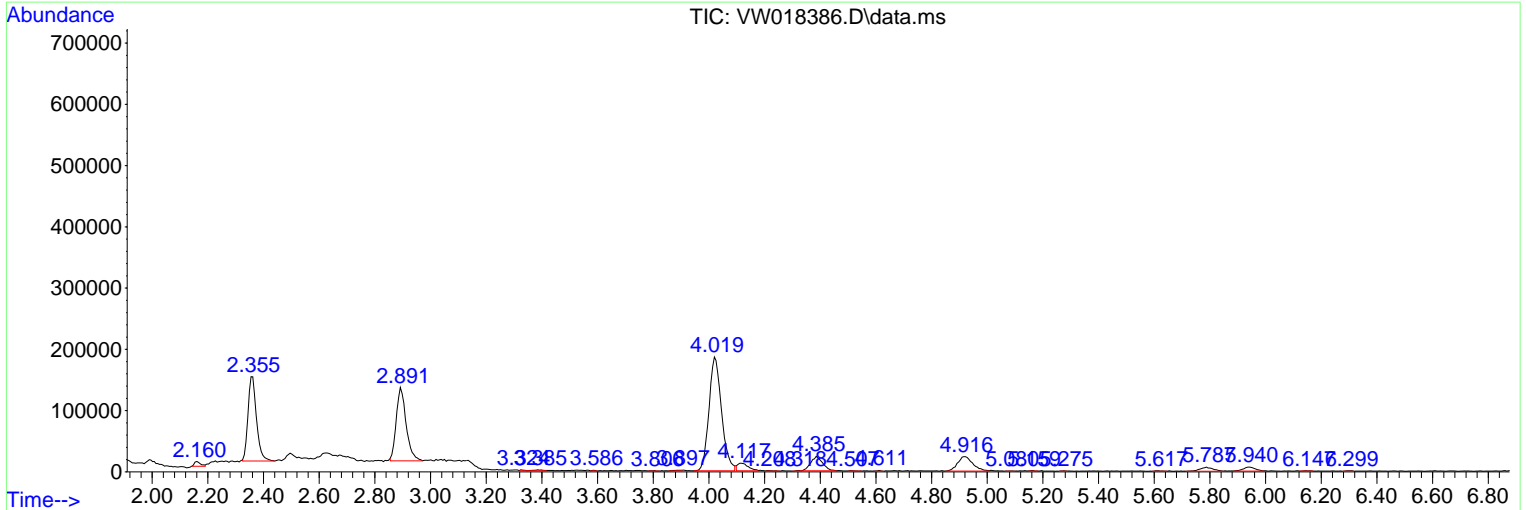
Sum of corrected areas: 10817345

Data Path : Z:\voasrv\HPCHEM1\MSVOA\_W\Data\VW031921\  
 Data File : VW018386.D  
 Acq On : 19 Mar 2021 14:05  
 Operator : SY/VA  
 Sample : M1685-09  
 Misc : 4.89G/10ML/MSVOA\_W/SOIL  
 ALS Vial : 21 Sample Multiplier: 1

**Instrument :**  
 MSVOA\_W  
**ClientSampleId :**  
 BG495

Quant Method : Z:\voasrv\HPCHEM1\MSVOA\_W\Method\SOM2WLM031921S.M  
 Quant Title : VOC Analysis

TIC Library : C:\DATABASE\NIST11.L  
 TIC Integration Parameters: LSCINT.P



Data Path : Z:\voasrv\HPCHEM1\MSVOA\_W\Data\VW031921\  
 Data File : VW018386.D  
 Acq On : 19 Mar 2021 14:05  
 Operator : SY/VA  
 Sample : M1685-09  
 Misc : 4.89G/10ML/MSVOA\_W/SOIL  
 ALS Vial : 21 Sample Multiplier: 1

Instrument :  
 MSVOA\_W  
 ClientSampled :  
 BG495

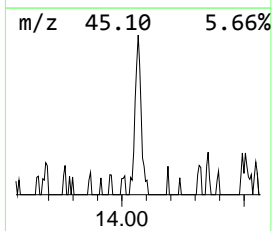
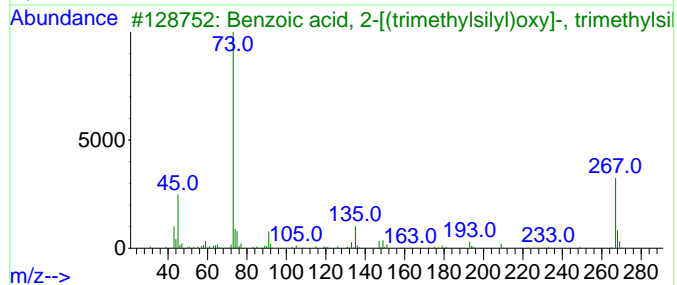
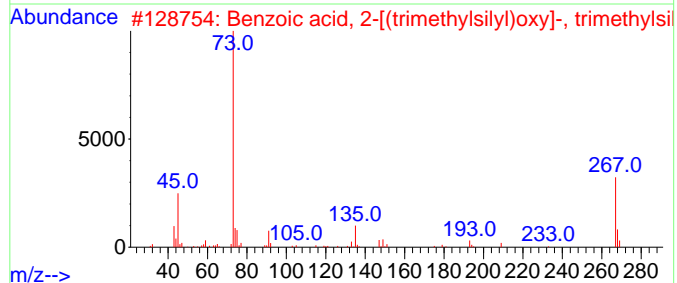
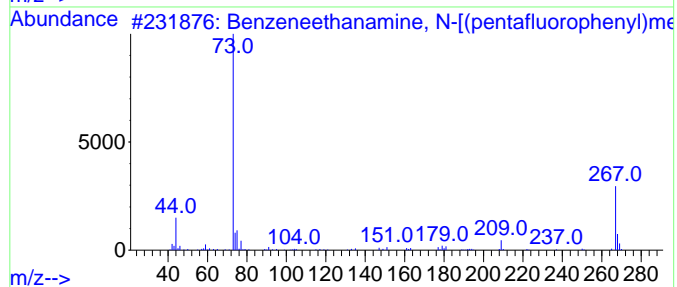
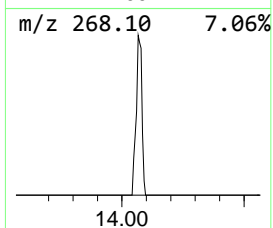
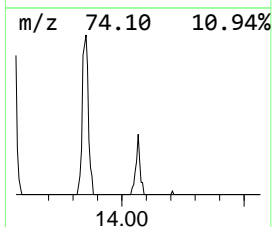
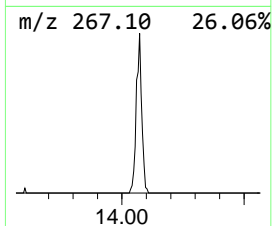
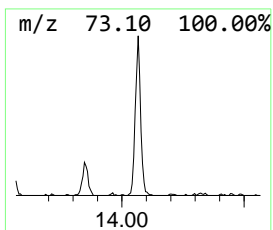
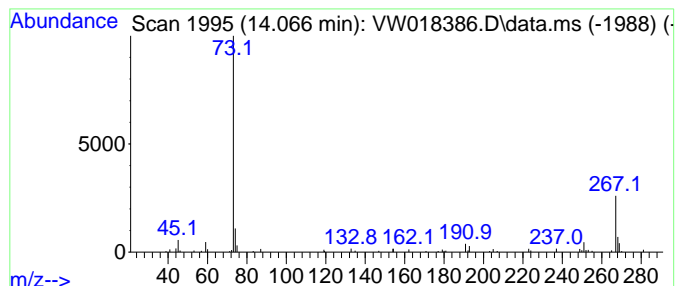
Quant Method : Z:\voasrv\HPCHEM1\MSVOA\_W\Method\SOM2WLM031921S.M  
 Quant Title : VOC Analysis

TIC Library : C:\DATABASE\NIST11.L  
 TIC Integration Parameters: LSCINT.P

\*\*\*\*\*  
 Peak Number 3 unknown-01 Concentration Rank 3

R.T.	EstConc	Area	Relative to ISTD	R.T.
14.066	1.52 ug/L	36184	1,4-Dichlorobenzene-d4	13.554

Hit#	of	5	Tentative ID	MW	MolForm	CAS#	Qual
1			Benzeneethanamine, N-[(pentafluo...	475	C21H26F5NO2Si2	055429-85-1	45
2			Benzoic acid, 2-[(trimethylsilyl...	282	C13H22O3Si2	003789-85-3	33
3			Benzoic acid, 2-[(trimethylsilyl...	282	C13H22O3Si2	003789-85-3	33
4			Benzoic acid, 2-[(trimethylsilyl...	282	C13H22O3Si2	003789-85-3	33
5			Spiro[2.4]hept-5-ene, 5-trimethy...	252	C14H28Si2	1000153-96-9	16



Data Path : Z:\voasrv\HPCHEM1\MSVOA\_W\Data\VW031921\  
Data File : VW018386.D  
Acq On : 19 Mar 2021 14:05  
Operator : SY/VA  
Sample : M1685-09  
Misc : 4.89G/10ML/MSVOA\_W/SOIL  
ALS Vial : 21 Sample Multiplier: 1

Instrument :  
MSVOA\_W  
ClientSampled :  
BG495

Quant Method : Z:\voasrv\HPCHEM1\MSVOA\_W\Method\SOM2WLM031921S.M  
Quant Title : VOC Analysis

TIC Library : C:\DATABASE\NIST11.L  
TIC Integration Parameters: LSCINT.P

TIC Top Hit name	RT	EstConc	Units	Response	--Internal Standard--			
					#	RT	Resp	Conc
-----	-----	-----	-----	-----	-----	-----	-----	-----
unknown-01	14.066	1.5	ug/L	36184	3	13.554	595495	25.0