

Data Path : Z:\voasrv\HPCHEM1\MSVOA_W\Data\VW031921\
 Data File : VW018397.D
 Acq On : 19 Mar 2021 18:28
 Operator : SY/VA
 Sample : M1698-10
 Misc : 5.91G/10ML/MSVOA_W/SOIL
 ALS Vial : 32 Sample Multiplier: 1

Instrument :
 MSVOA_W
 ClientSampleId :
 BG4K8

Integration Parameters: LSCINT.P

Integrator: RTE
 Smoothing : OFF Filtering: 5
 Sampling : 1 Min Area: 0 % of largest Peak
 Start Thrs: 0.2 Max Peaks: 100
 Stop Thrs : 0 Peak Location: TOP

If leading or trailing edge < 100 prefer < Baseline drop else tangent >
 Peak separation: 5

Method : Z:\voasrv\HPCHEM1\MSVOA_W\Method\SOM2WLM031921S.M
 Title : VOC Analysis

Signal : TIC: VW018397.D\data.ms

peak #	R.T. min	first scan	max scan	last scan	PK TY	peak height	corr. area	corr. % max.	% of total
1	2.355	68	74	85	rBV	136707	293498	1.73%	0.933%
2	2.892	155	162	176	rBV	125862	303507	1.79%	0.965%
3	3.282	224	226	228	rBV3	811	974	0.01%	0.003%
4	3.392	241	244	248	rBV4	1848	2870	0.02%	0.009%
5	3.684	288	292	295	rBV4	728	1261	0.01%	0.004%
6	3.745	298	302	303	rBV4	811	1047	0.01%	0.003%
7	3.879	323	324	329	rVV3	743	1066	0.01%	0.003%
8	4.026	335	348	360	rBV2	190175	619405	3.66%	1.968%
9	4.391	398	408	422	rBV	8252	26930	0.16%	0.086%
10	4.794	472	474	477	rVB4	774	860	0.01%	0.003%
11	4.922	484	495	509	rBV4	25067	96546	0.57%	0.307%
12	5.135	527	530	532	rBV3	1194	1393	0.01%	0.004%
13	5.288	553	555	559	rBV2	619	866	0.01%	0.003%
14	5.367	565	568	570	rVV4	793	1163	0.01%	0.004%
15	5.428	573	578	579	rVV4	1021	1688	0.01%	0.005%
16	5.940	654	662	673	rVV4	6084	19131	0.11%	0.061%
17	6.159	696	698	702	rBV3	976	960	0.01%	0.003%
18	6.342	724	728	730	rVB3	535	785	0.00%	0.002%
19	6.806	801	804	807	rBV2	1005	1430	0.01%	0.005%
20	6.909	815	821	822	rBV5	1806	3333	0.02%	0.011%
21	7.074	837	848	855	rBV	53932	155365	0.92%	0.494%
22	7.312	882	887	889	rBV4	763	1315	0.01%	0.004%
23	7.543	922	925	930	rVB5	1022	1729	0.01%	0.005%
24	7.647	930	942	957	rBV	305034	742569	4.39%	2.360%
25	7.854	972	976	980	rBV5	1135	1675	0.01%	0.005%
26	7.939	987	990	992	rBV4	1063	1179	0.01%	0.004%
27	7.958	992	993	999	rVB3	1065	1217	0.01%	0.004%
28	8.275	1035	1045	1061	rBV2	594042	1764971	10.43%	5.609%
29	8.385	1061	1063	1066	rVB4	888	1071	0.01%	0.003%
30	8.555	1087	1091	1095	rBV6	2051	3451	0.02%	0.011%
31	8.695	1108	1114	1122	rVB8	1702	4289	0.03%	0.014%
32	8.842	1130	1138	1150	rVV	622722	1228332	7.26%	3.904%
33	9.092	1170	1179	1191	rVB	228446	459047	2.71%	1.459%
34	9.275	1200	1209	1222	rBV	404408	810171	4.79%	2.575%
35	9.415	1229	1232	1237	rVB4	2963	4449	0.03%	0.014%
36	9.567	1255	1257	1260	rVB2	681	802	0.00%	0.003%

Data Path : Z:\voasrv\HPCHEM1\MSVOA_W\Data\VW031921\
 Data File : VW018397.D
 Acq On : 19 Mar 2021 18:28
 Operator : SY/VA
 Sample : M1698-10
 Misc : 5.91G/10ML/MSVOA_W/SOIL
 ALS Vial : 32 Sample Multiplier: 1

Instrument :
 MSVOA_W
 ClientSampleId :
 BG4K8

Integration Parameters: LSCINT.P
 Integrator: RTE
 Smoothing : OFF
 Sampling : 1
 Start Thrs: 0.2
 Stop Thrs : 0
 Filtering: 5
 Min Area: 0 % of largest Peak
 Max Peaks: 100
 Peak Location: TOP

If leading or trailing edge < 100 prefer < Baseline drop else tangent >
 Peak separation: 5

Method : Z:\voasrv\HPCHEM1\MSVOA_W\Method\SOM2WLM031921S.M
 Title : VOC Analysis

77	14.066	1989	1995	2000	rVV2	44425	70829	0.42%	0.225%
78	14.194	2012	2016	2021	rVV2	2949	4506	0.03%	0.014%
79	14.322	2029	2037	2049	rVV8	9716	26455	0.16%	0.084%
80	14.487	2062	2064	2066	rBV3	1413	1613	0.01%	0.005%
81	14.518	2066	2069	2075	rVB7	2228	3657	0.02%	0.012%
82	14.615	2083	2085	2092	rVB6	1436	2357	0.01%	0.007%
83	14.725	2097	2103	2108	rVB2	13267	19850	0.12%	0.063%
84	14.792	2110	2114	2115	rBV3	849	974	0.01%	0.003%
85	14.889	2129	2130	2135	rVB5	1214	1575	0.01%	0.005%
86	15.097	2162	2164	2165	rVV2	1312	1090	0.01%	0.003%
87	15.133	2165	2170	2171	rVV3	2710	3284	0.02%	0.010%
88	15.182	2174	2178	2182	rVB7	2249	3564	0.02%	0.011%
89	15.274	2190	2193	2198	rVB4	1025	1635	0.01%	0.005%
90	15.353	2202	2206	2208	rBV4	1216	1423	0.01%	0.005%
91	15.402	2209	2214	2215	rVV5	1859	3191	0.02%	0.010%
92	15.432	2215	2219	2223	rVB5	4331	7522	0.04%	0.024%
93	15.493	2224	2229	2234	rVB2	4369	8071	0.05%	0.026%
94	15.609	2246	2248	2252	rVB4	754	799	0.00%	0.003%
95	15.688	2257	2261	2267	rVB7	3115	5394	0.03%	0.017%
96	15.761	2267	2273	2274	rBV6	2280	2726	0.02%	0.009%
97	15.883	2291	2293	2297	rVB4	1187	1315	0.01%	0.004%
98	15.944	2299	2303	2304	rBV3	1981	1958	0.01%	0.006%
99	16.584	2406	2408	2413	rVB6	1174	1094	0.01%	0.003%
100	16.670	2420	2422	2424	rVB2	1212	791	0.00%	0.003%

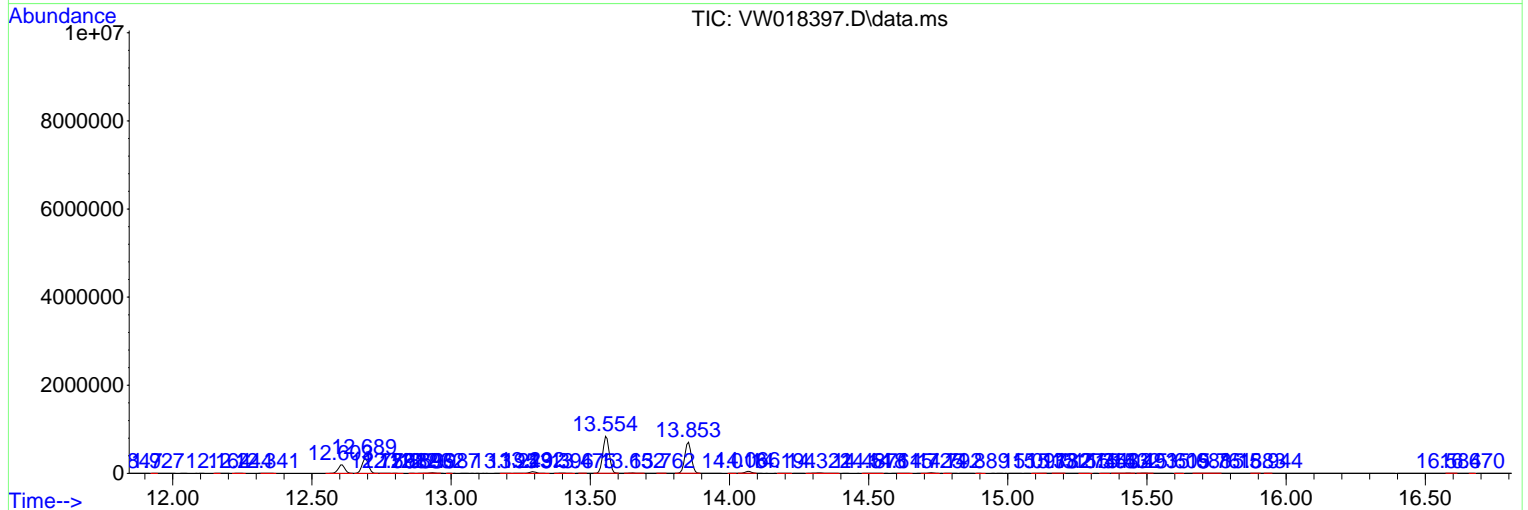
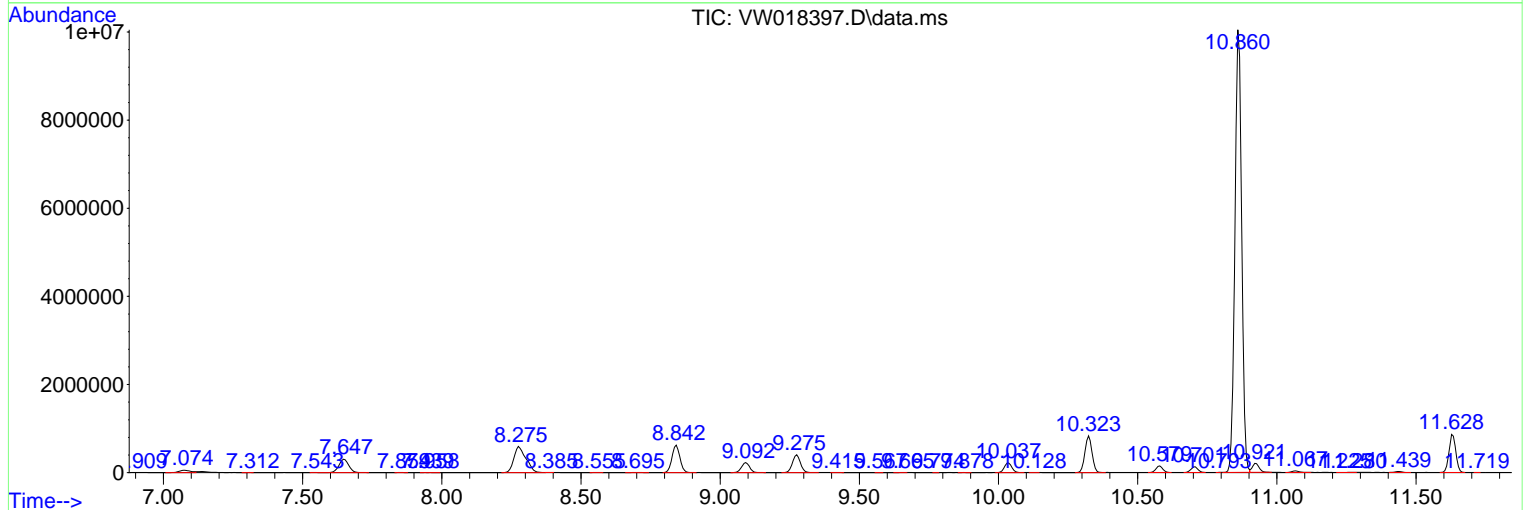
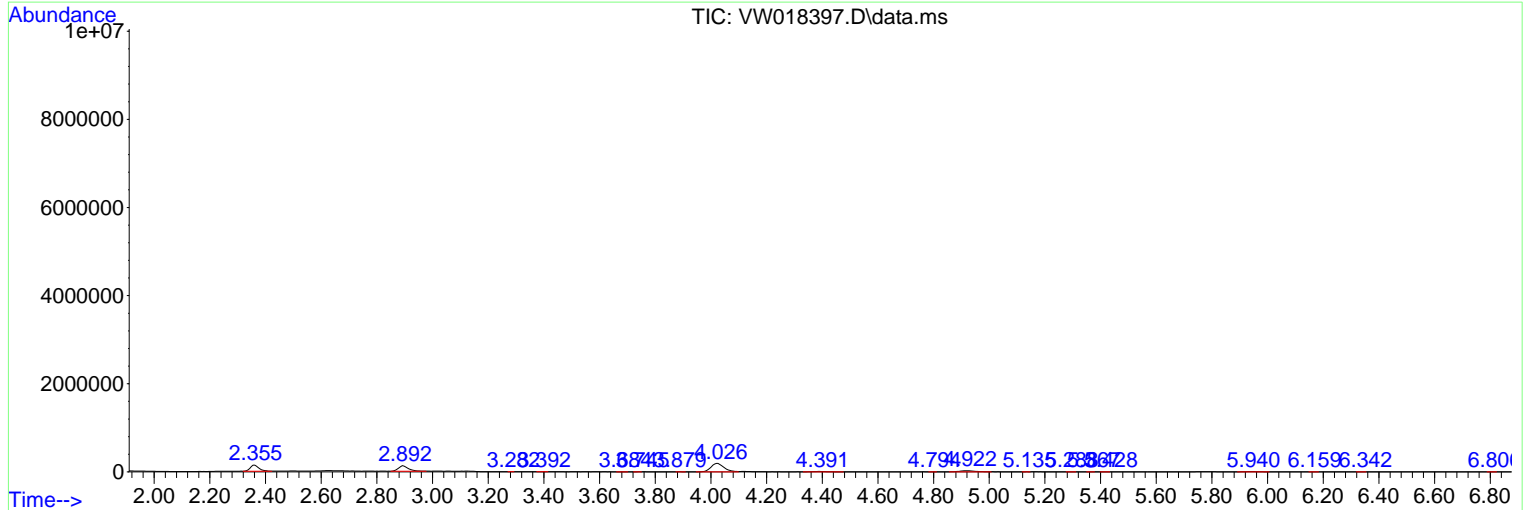
Sum of corrected areas: 31466635

Data Path : Z:\voasrv\HPCHEM1\MSVOA_W\Data\VW031921\
 Data File : VW018397.D
 Acq On : 19 Mar 2021 18:28
 Operator : SY/VA
 Sample : M1698-10
 Misc : 5.91G/10ML/MSVOA_W/SOIL
 ALS Vial : 32 Sample Multiplier: 1

Instrument :
 MSVOA_W
 ClientSampleId :
 BG4K8

Quant Method : Z:\voasrv\HPCHEM1\MSVOA_W\Method\SOM2WLM031921S.M
 Quant Title : VOC Analysis

TIC Library : C:\DATABASE\NIST11.L
 TIC Integration Parameters: LSCINT.P



Data Path : Z:\voasrv\HPCHEM1\MSVOA_W\Data\VW031921\
 Data File : VW018397.D
 Acq On : 19 Mar 2021 18:28
 Operator : SY/VA
 Sample : M1698-10
 Misc : 5.91G/10ML/MSVOA_W/SOIL
 ALS Vial : 32 Sample Multiplier: 1

Instrument :
 MSVOA_W
 ClientSampleId :
 BG4K8

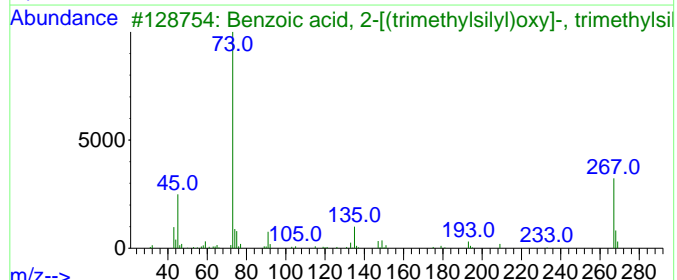
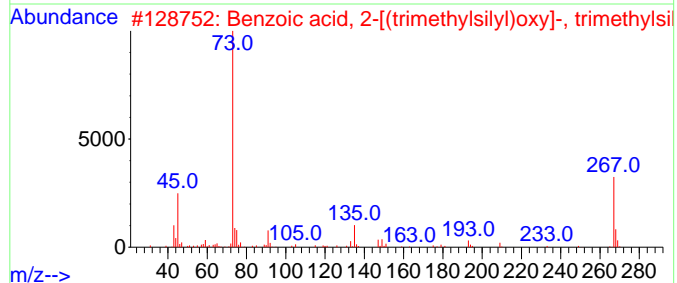
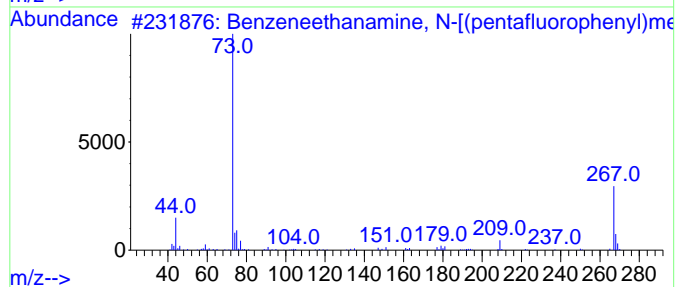
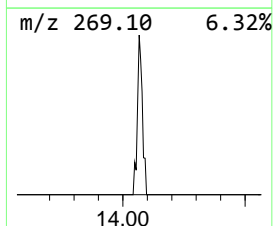
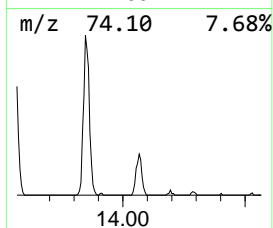
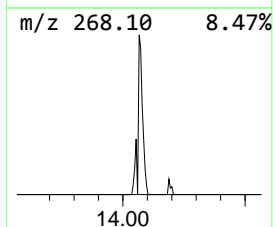
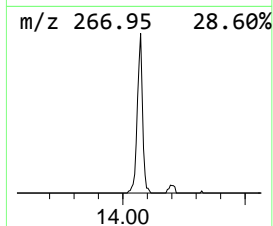
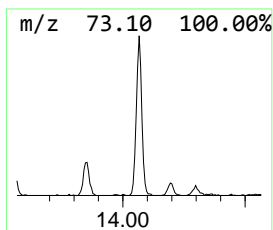
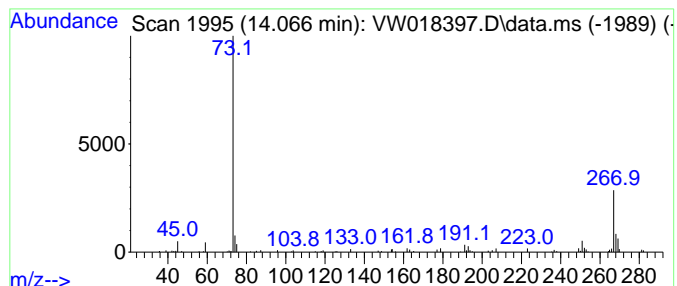
Quant Method : Z:\voasrv\HPCHEM1\MSVOA_W\Method\SOM2WLM031921S.M
 Quant Title : VOC Analysis

TIC Library : C:\DATABASE\NIST11.L
 TIC Integration Parameters: LSCINT.P

 Peak Number 4 unknown-01 Concentration Rank 4

R.T.	EstConc	Area	Relative to ISTD	R.T.
14.066	1.32 ug/L	70829	1,4-Dichlorobenzene-d4	13.554

Hit#	of	5	Tentative ID	MW	MolForm	CAS#	Qual
1			Benzeneethanamine, N-[(pentafluoro...]	475	C21H26F5NO2Si2	055429-85-1	45
2			Benzoic acid, 2-[(trimethylsilyl...]	282	C13H22O3Si2	003789-85-3	42
3			Benzoic acid, 2-[(trimethylsilyl...]	282	C13H22O3Si2	003789-85-3	42
4			Benzoic acid, 2-[(trimethylsilyl...]	282	C13H22O3Si2	003789-85-3	36
5			1-Boraindane, 3-methyl-1-[1-(tri...]	266	C17H23BSi	190316-36-0	25



Data Path : Z:\voasrv\HPCHEM1\MSVOA_W\Data\VW031921\
Data File : VW018397.D
Acq On : 19 Mar 2021 18:28
Operator : SY/VA
Sample : M1698-10
Misc : 5.91G/10ML/MSVOA_W/SOIL
ALS Vial : 32 Sample Multiplier: 1

Instrument :
MSVOA_W
ClientSampled :
BG4K8

Quant Method : Z:\voasrv\HPCHEM1\MSVOA_W\Method\SOM2WLM031921S.M
Quant Title : VOC Analysis

TIC Library : C:\DATABASE\NIST11.L
TIC Integration Parameters: LSCINT.P

TIC Top Hit name	RT	EstConc	Units	Response	--Internal Standard--			
					#	RT	Resp	Conc
-----	-----	-----	-----	-----	-----	-----	-----	-----
unknown-01	14.066	1.3	ug/L	70829	3	13.554	1341200	25.0