

Data File : VW009299.D
 Acq On : 20 Mar 2019 21:48
 Operator : SY/VA
 Sample : K1986-18
 Misc : 5.54G/10ML/MSVOA_W/SOIL
 ALS Vial : 1 Sample Multiplier: 1

Instrument :
 MSVOA_W
 ClientSampleId :
 BF126

Quant Time: Mar 21 12:23:08 2019
 Quant Method : Z:\VOASRV\HPCHEM1\MSVOA_W\METHOD\SOM2WLM031419S.M
 Quant Title : VOC Analysis
 QLast Update : Thu Mar 21 12:20:05 2019
 Response via : Initial Calibration

Internal Standards	R.T.	QIon	Response	Conc	Units	Dev(Min)
1) 1,4-Difluorobenzene	8.84	114	384770	25.00	ug/L	0.00
28) Chlorobenzene-d5	11.63	117	367968	25.00	ug/L	0.00
60) 1,4-Dichlorobenzene-d4	13.56	152	169785	25.00	ug/L	0.00

System Monitoring Compounds

4) Vinyl Chloride-d3	2.36	65	119780	26.05	ug/L	0.00
Spiked Amount	25.000	Range	30 - 150	Recovery	=	104.20%
7) Chloroethane-d5	2.89	69	114348	21.25	ug/L	0.00
Spiked Amount	25.000	Range	30 - 150	Recovery	=	85.00%
10) 1,1-Dichloroethene-d2	4.01	63	188176	18.94	ug/L	0.00
Spiked Amount	25.000	Range	45 - 110	Recovery	=	75.76%
20) 2-Butanone-d5	7.07	46	85442	44.93	ug/L	0.00
Spiked Amount	50.000	Range	20 - 135	Recovery	=	89.86%
24) Chloroform-d	7.65	84	260273	24.79	ug/L	0.00
Spiked Amount	25.000	Range	40 - 150	Recovery	=	99.16%
26) 1,2-Dichloroethane-d4	8.30	65	156042	24.67	ug/L	0.00
Spiked Amount	25.000	Range	70 - 130	Recovery	=	98.68%
29) Benzene-d6	8.27	84	494413	24.36	ug/L	0.00
Spiked Amount	25.000	Range	20 - 135	Recovery	=	97.44%
33) 1,2-Dichloropropane-d6	9.27	67	152551	25.03	ug/L	0.00
Spiked Amount	25.000	Range	70 - 120	Recovery	=	100.12%
37) Toluene-d8	10.32	98	445729	23.75	ug/L	0.00
Spiked Amount	25.000	Range	30 - 130	Recovery	=	95.00%
38) trans-1,3-Dichloropropene-	10.58	79	65649	21.45	ug/L	0.00
Spiked Amount	25.000	Range	30 - 135	Recovery	=	85.80%
39) 2-Hexanone-d5	10.93	63	65545	44.40	ug/L	0.00
Spiked Amount	50.000	Range	20 - 135	Recovery	=	88.80%
48) 1,1,2,2-Tetrachloroethane-	12.69	84	141093	23.50	ug/L	0.00
Spiked Amount	25.000	Range	45 - 120	Recovery	=	94.00%
61) 1,2-Dichlorobenzene-d4	13.86	152	173237	26.61	ug/L	0.00
Spiked Amount	25.000	Range	75 - 120	Recovery	=	106.44%

Target Compounds

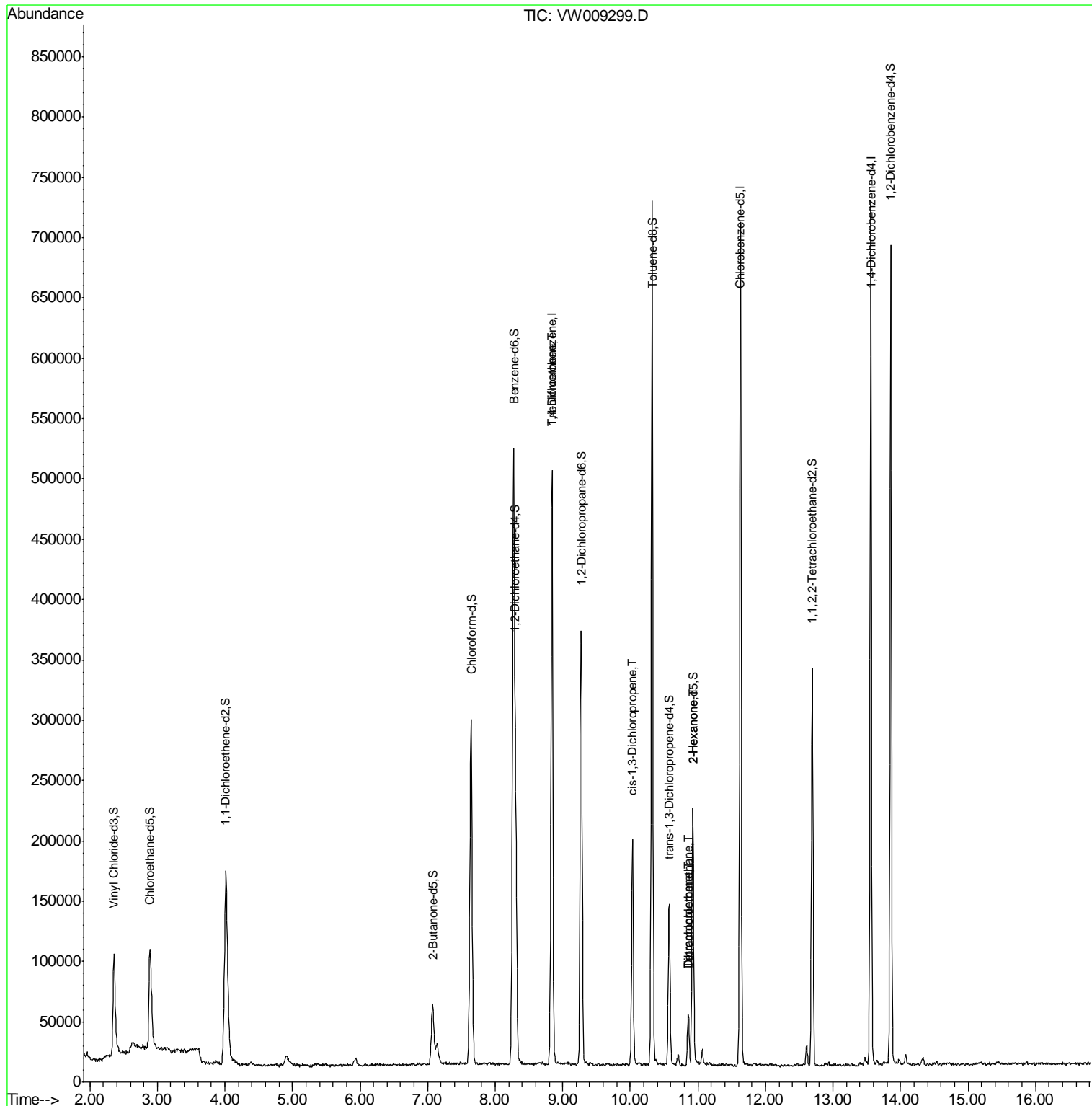
					Qvalue
35) Trichloroethene	8.84	95	12225	2.278 ug/L #	4
42) cis-1,3-Dichloropropene	10.04	75	5160	0.613 ug/L #	70
47) Tetrachloroethene	10.86	164	9264	2.043 ug/L	90
49) 2-Hexanone	10.93	43	10043	3.045 ug/L #	68
50) Dibromochloromethane	10.87	129	8131	1.597 ug/L #	9

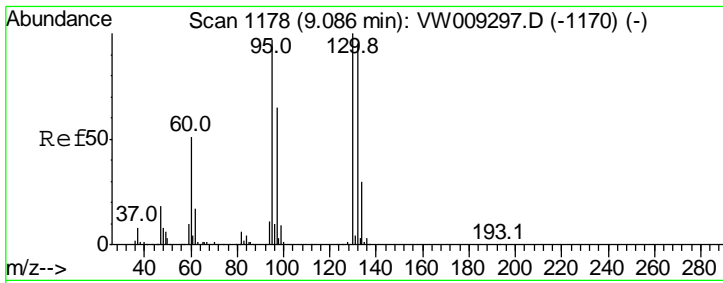
(#) = qualifier out of range (m) = manual integration (+) = signals summed

Data File : VW009299.D
Acq On : 20 Mar 2019 21:48
Operator : SY/VA
Sample : K1986-18
Misc : 5.54G/10ML/MSVOA_W/SOIL
ALS Vial : 1 Sample Multiplier: 1

Instrument :
MSVOA_W
Client Sampled :
BF126

Quant Time: Mar 21 12:23:08 2019
Quant Method : Z:\VOASRV\HPCHEM1\MSVOA_W\METHOD\SOM2WLM031419S.M
Quant Title : VOC Analysis
QLast Update : Thu Mar 21 12:20:05 2019
Response via : Initial Calibration

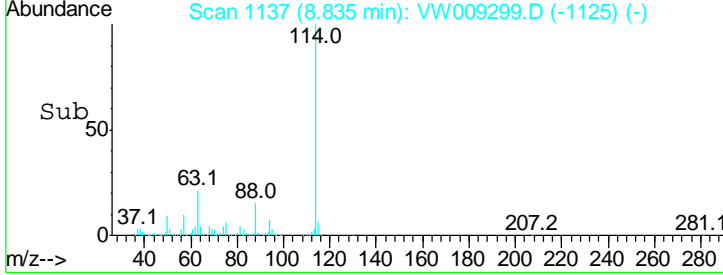
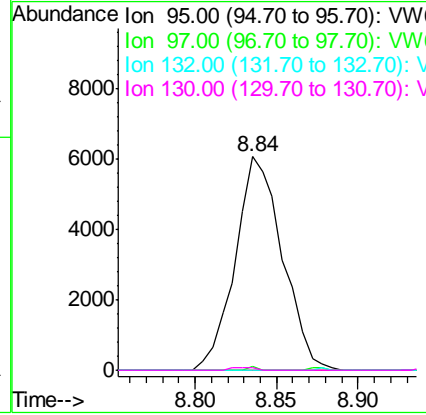
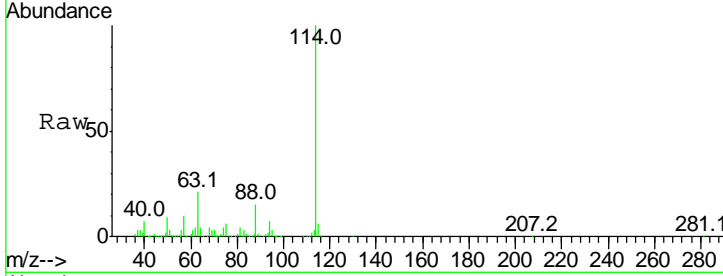




#35
 Trichloroethene
 Concen: 2.278 ug/L
 RT: 8.84 min Scan# 1137
 Delta R.T. -0.26 min
 Lab File: VW009299.D
 Acq: 20 Mar 2019 21:48

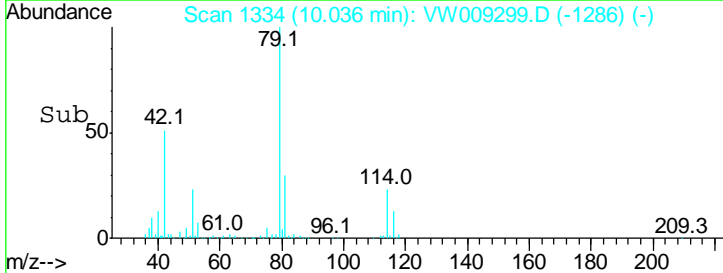
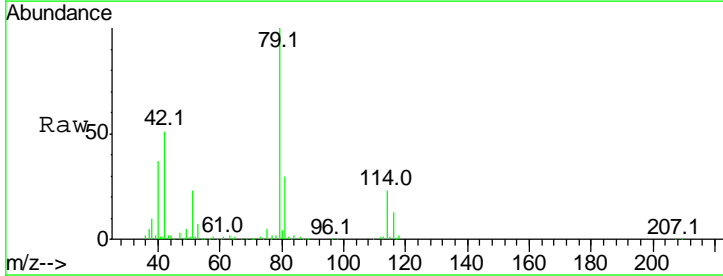
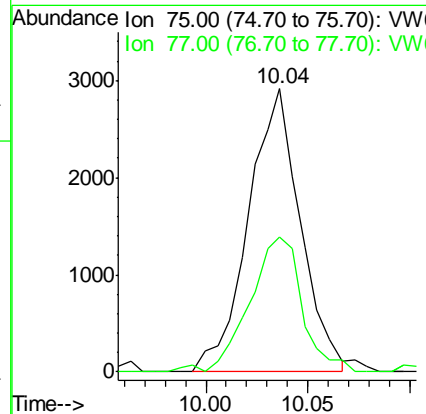
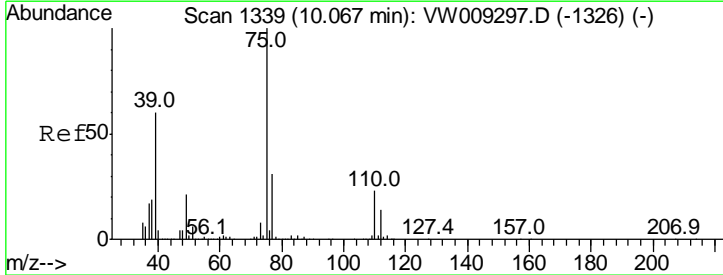
Instrument : MSVOA_W
 ClientSampled : BF126

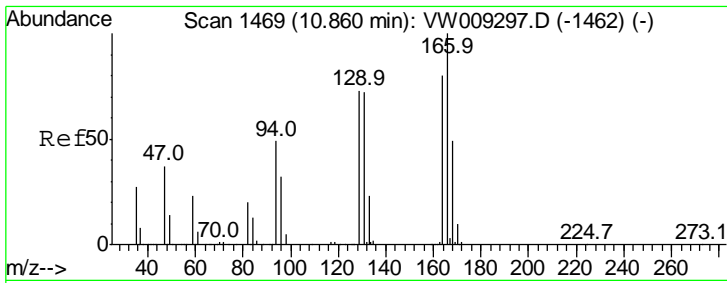
Tgt Ion	Resp	Lower	Upper
95	12225		
97	0.3	44.7	82.9#
132	0.0	69.0	128.2#
130	0.5	72.7	134.9#



#42
 cis-1,3-Dichloropropene
 Concen: 0.613 ug/L
 RT: 10.04 min Scan# 1334
 Delta R.T. -0.04 min
 Lab File: VW009299.D
 Acq: 20 Mar 2019 21:48

Tgt Ion	Resp	Lower	Upper
75	5160		
77	47.6	21.6	40.2#



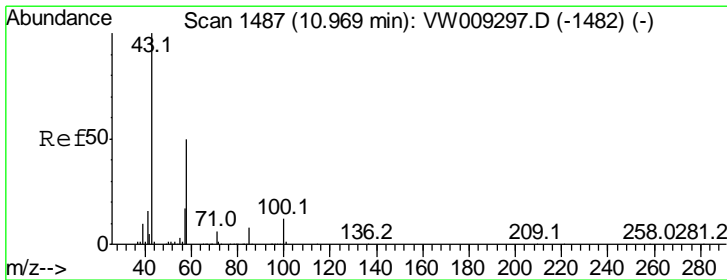
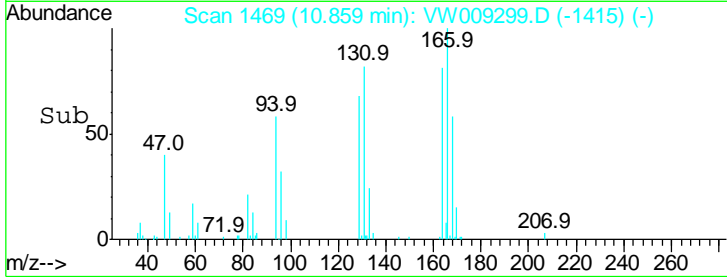
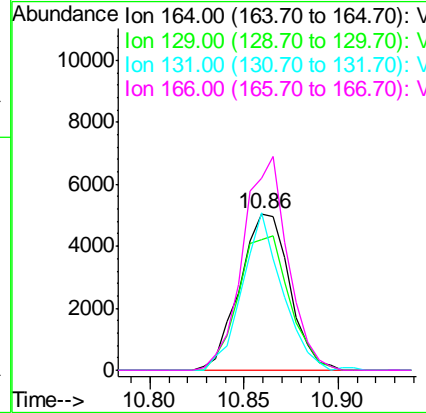
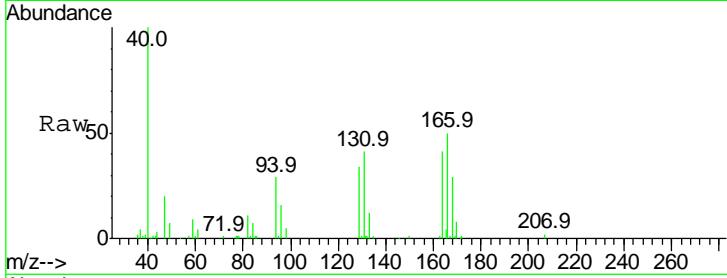


#47
 Tetrachloroethene
 Concen: 2.043 ug/L
 RT: 10.86 min Scan# 1469
 Delta R.T. -0.00 min
 Lab File: VW009299.D
 Acq: 20 Mar 2019 21:48

Instrument :
 MSVOA_W
 ClientSampled :
 BF126

Tgt Ion: 164 Resp: 9264

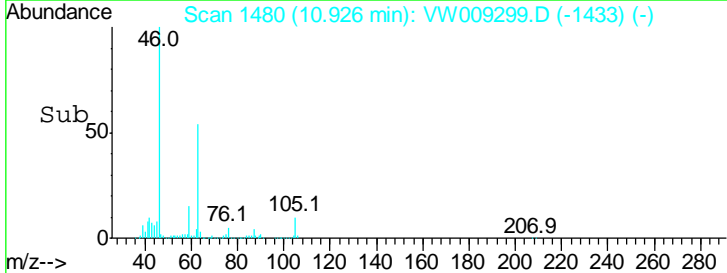
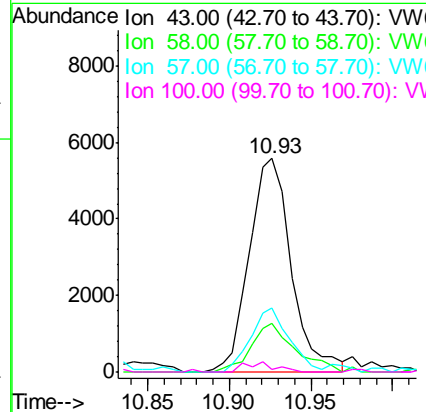
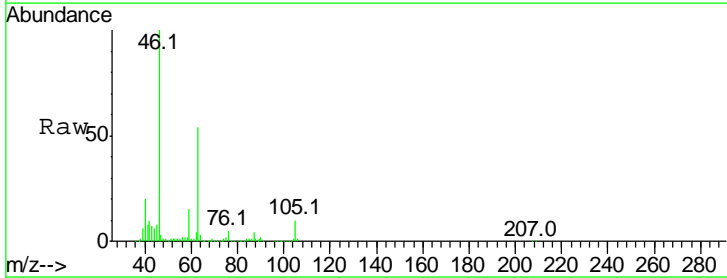
Ion	Ratio	Lower	Upper
164	100		
129	83.5	66.5	123.5
131	103.5	62.6	116.3
166	125.5	91.6	170.0

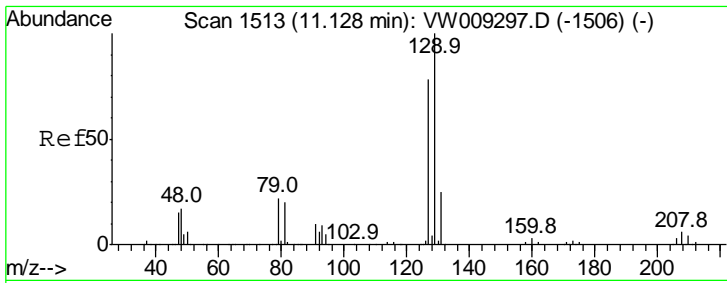


#49
 2-Hexanone
 Concen: 3.045 ug/L
 RT: 10.93 min Scan# 1480
 Delta R.T. -0.04 min
 Lab File: VW009299.D
 Acq: 20 Mar 2019 21:48

Tgt Ion: 43 Resp: 10043

Ion	Ratio	Lower	Upper
43	100		
58	23.7	39.2	58.8#
57	27.1	14.2	21.2#
100	0.8	8.9	13.3#





#50
 Dibromochloromethane
 Concen: 1.597 ug/L
 RT: 10.87 min Scan# 1470
 Delta R.T. -0.26 min
 Lab File: VW009299.D
 Acq: 20 Mar 2019 21:48

Instrument : MSVOA_W
 ClientSampled : BF126

Tgt Ion:129 Resp: 8131
 Ion Ratio Lower Upper
 129 100
 127 0.0 56.8 105.6#

