

Data Path : Z:\VOASRV\HPCHEM1\MSVOA W\DATA\VW032019\  
 Data File : VW009280.D  
 Acq On : 20 Mar 2019 12:00  
 Operator : SY/VA  
 Sample : K1986-02  
 Misc : 6.17G/10ML/MSVOA W/SOIL  
 ALS Vial : 1 Sample Multiplier: 1

Instrument :  
 MSVOA\_W  
 ClientSampleId :  
 BF0A9

Integration Parameters: LSCINT.P

Integrator: RTE  
 Smoothing : OFF  
 Sampling : 1  
 Start Thrs: 0.2  
 Stop Thrs : 0

Filtering: 5  
 Min Area: 0 % of largest Peak  
 Max Peaks: 100  
 Peak Location: TOP

If leading or trailing edge < 100 prefer < Baseline drop else tangent >  
 Peak separation: 5

Method : Z:\VOASRV\HPCHEM1\MSVOA\_W\METHOD\SOM2WLM031419S.M  
 Title : VOC Analysis

Signal : TIC

peak #	R.T. min	first scan	max scan	last scan	PK TY	peak height	corr. area	corr. % max.	% of total
1	2.355	69	74	87	rBV	91611	218189	13.51%	1.827%
2	2.892	157	162	179	rVB2	89667	250491	15.51%	2.098%
3	3.757	302	304	305	rBV	1296	968	0.06%	0.008%
4	3.843	313	318	319	rBV3	3209	3963	0.25%	0.033%
5	4.013	335	346	358	rBV2	169010	588933	36.47%	4.932%
6	4.251	382	385	386	rBV3	2498	2744	0.17%	0.023%
7	7.080	841	849	855	rBV	47785	128375	7.95%	1.075%
8	7.464	911	912	913	rBV	1927	823	0.05%	0.007%
9	7.641	933	941	954	rVB	297603	721401	44.67%	6.042%
10	7.787	963	965	966	rBV2	1356	889	0.06%	0.007%
11	7.836	971	973	974	rVB	1965	1345	0.08%	0.011%
12	7.885	979	981	982	rVB	2016	1140	0.07%	0.010%
13	7.903	982	984	985	rBV	1406	899	0.06%	0.008%
14	7.952	990	992	993	rBV	1867	1133	0.07%	0.009%
15	8.067	1009	1011	1012	rVB2	1336	706	0.04%	0.006%
16	8.092	1013	1015	1016	rVB2	1311	651	0.04%	0.005%
17	8.202	1031	1033	1035	rBV	838	893	0.06%	0.007%
18	8.269	1035	1044	1061	rVV2	536119	1614933	100.00%	13.525%
19	8.391	1061	1064	1066	rVB2	1545	1834	0.11%	0.015%
20	8.573	1093	1094	1098	rVB2	2997	2497	0.15%	0.021%
21	8.683	1110	1112	1114	rBV2	3489	3114	0.19%	0.026%
22	8.842	1129	1138	1150	rBV	564204	1114447	69.01%	9.333%
23	8.921	1150	1151	1155	rVV	2191	2485	0.15%	0.021%
24	8.958	1155	1157	1158	rVB	2253	976	0.06%	0.008%
25	9.055	1171	1173	1175	rBV2	2111	1687	0.10%	0.014%
26	9.073	1175	1176	1184	rVB3	3812	5313	0.33%	0.044%
27	9.207	1196	1198	1201	rBV2	1245	1701	0.11%	0.014%
28	9.275	1201	1209	1217	rVV	373046	752787	46.61%	6.305%
29	9.500	1245	1246	1249	rBV2	1211	1086	0.07%	0.009%
30	9.585	1258	1260	1261	rVB2	916	636	0.04%	0.005%
31	9.610	1263	1264	1266	rVB	2436	1251	0.08%	0.010%
32	9.628	1266	1267	1268	rBV	1122	583	0.04%	0.005%
33	9.653	1268	1271	1273	rBV3	1864	2299	0.14%	0.019%
34	9.732	1281	1284	1285	rBV2	1174	1459	0.09%	0.012%

Data Path : Z:\VOASRV\HPCHEM1\MSVOA W\DATA\VW032019\  
 Data File : VW009280.D  
 Acq On : 20 Mar 2019 12:00  
 Operator : SY/VA  
 Sample : K1986-02  
 Misc : 6.17G/10ML/MSVOA W/SOIL  
 ALS Vial : 1 Sample Multiplier: 1

Instrument :  
 MSVOA\_W  
 ClientSampleId :  
 BF0A9

## Integration Parameters: LSCINT.P

Integrator: RTE  
 Smoothing : OFF  
 Sampling : 1  
 Start Thrs: 0.2  
 Stop Thrs : 0

Filtering: 5  
 Min Area: 0 % of largest Peak  
 Max Peaks: 100  
 Peak Location: TOP

If leading or trailing edge < 100 prefer < Baseline drop else tangent >  
 Peak separation: 5

Method : Z:\VOASRV\HPCHEM1\MSVOA\_W\METHOD\SOM2WLM031419S.M  
 Title : VOC Analysis

35	9.750	1285	1287	1288	rBV2	1477	1353	0.08%	0.011%
36	9.854	1303	1304	1305	rBV	1568	783	0.05%	0.007%
37	9.884	1308	1309	1311	rBV2	2212	1920	0.12%	0.016%
38	9.945	1317	1319	1321	rBV	1014	742	0.05%	0.006%
39	10.030	1327	1333	1342	rVB	204777	363292	22.50%	3.043%
40	10.165	1353	1355	1357	rVB2	1078	1094	0.07%	0.009%
41	10.207	1357	1362	1363	rBV3	1879	2834	0.18%	0.024%
42	10.323	1374	1381	1389	rBV	763707	1315371	81.45%	11.016%
43	10.512	1408	1412	1416	rVB5	2213	4085	0.25%	0.034%
44	10.573	1416	1422	1434	rBV	133025	241143	14.93%	2.020%
45	10.707	1440	1444	1449	rVB2	6901	11571	0.72%	0.097%
46	10.744	1449	1450	1451	rBV	1175	705	0.04%	0.006%
47	10.860	1462	1469	1474	rBV2	82150	141786	8.78%	1.187%
48	10.927	1474	1480	1491	rVV	189950	330835	20.49%	2.771%
49	11.012	1491	1494	1496	rVV	2810	3174	0.20%	0.027%
50	11.067	1498	1503	1512	rVV4	10808	23536	1.46%	0.197%
51	11.134	1512	1514	1516	rVV	2086	1730	0.11%	0.014%
52	11.177	1516	1521	1526	rVV4	3997	8083	0.50%	0.068%
53	11.225	1527	1529	1531	rVV	3130	1925	0.12%	0.016%
54	11.244	1531	1532	1535	rVV	1637	1737	0.11%	0.015%
55	11.292	1538	1540	1542	rVB2	1711	760	0.05%	0.006%
56	11.396	1554	1557	1560	rBV3	2393	3094	0.19%	0.026%
57	11.506	1572	1575	1576	rBV2	1052	1078	0.07%	0.009%
58	11.518	1576	1577	1579	rVB2	2278	1267	0.08%	0.011%
59	11.549	1579	1582	1583	rBV2	1394	1623	0.10%	0.014%
60	11.628	1588	1595	1603	rBV	780737	1331887	82.47%	11.154%
61	11.713	1606	1609	1611	rBV2	2322	2543	0.16%	0.021%
62	11.835	1624	1629	1633	rBV3	4440	8928	0.55%	0.075%
63	11.969	1649	1651	1654	rVB3	1757	1843	0.11%	0.015%
64	12.000	1654	1656	1658	rBV2	1601	1655	0.10%	0.014%
65	12.085	1667	1670	1671	rVB2	1706	1505	0.09%	0.013%
66	12.103	1671	1673	1674	rBV2	719	668	0.04%	0.006%
67	12.134	1676	1678	1680	rBV2	1616	1467	0.09%	0.012%
68	12.335	1709	1711	1717	rVB5	3575	6143	0.38%	0.051%
69	12.469	1729	1733	1735	rBV3	3548	5116	0.32%	0.043%
70	12.615	1751	1757	1761	rBV5	10307	19836	1.23%	0.166%
71	12.695	1763	1770	1780	rVB	279394	469363	29.06%	3.931%

Data Path : Z:\VOASRV\HPCHEM1\MSVOA W\DATA\VW032019\  
 Data File : VW009280.D  
 Acq On : 20 Mar 2019 12:00  
 Operator : SY/VA  
 Sample : K1986-02  
 Misc : 6.17G/10ML/MSVOA W/SOIL  
 ALS Vial : 1 Sample Multiplier: 1

Instrument :  
 MSVOA\_W  
 ClientSampleId :  
 BFOA9

## Integration Parameters: LSCINT.P

Integrator: RTE  
 Smoothing : OFF  
 Sampling : 1  
 Start Thrs: 0.2  
 Stop Thrs : 0

Filtering: 5  
 Min Area: 0 % of largest Peak  
 Max Peaks: 100  
 Peak Location: TOP

If leading or trailing edge < 100 prefer < Baseline drop else tangent >  
 Peak separation: 5

Method : Z:\VOASRV\HPCHEM1\MSVOA\_W\METHOD\SOM2WLM031419S.M  
 Title : VOC Analysis

72	12.768	1780	1782	1785	rBV3	1538	1618	0.10%	0.014%
73	13.146	1843	1844	1846	rBV2	1973	1956	0.12%	0.016%
74	13.170	1846	1848	1849	rVV2	1624	1076	0.07%	0.009%
75	13.365	1878	1880	1881	rBV	1782	1252	0.08%	0.010%
76	13.469	1895	1897	1903	rVB6	8763	12035	0.75%	0.101%
77	13.560	1905	1912	1922	rVB	722993	1141946	70.71%	9.564%
78	13.701	1933	1935	1937	rBV2	1776	1811	0.11%	0.015%
79	13.853	1954	1960	1967	rVB	584412	976554	60.47%	8.179%
80	14.011	1984	1986	1987	rBV	2279	1168	0.07%	0.010%
81	14.079	1993	1997	2002	rVB3	7175	11401	0.71%	0.095%
82	14.176	2010	2013	2014	rBV3	2652	2716	0.17%	0.023%
83	14.280	2028	2030	2031	rBV2	1986	1678	0.10%	0.014%
84	14.463	2058	2060	2062	rBV3	1701	1132	0.07%	0.009%
85	14.761	2107	2109	2110	rBV2	1692	1759	0.11%	0.015%
86	14.895	2130	2131	2133	rBV2	2216	1674	0.10%	0.014%
87	14.920	2133	2135	2139	rVV2	2057	2503	0.15%	0.021%
88	14.999	2142	2148	2154	rVB5	4471	10525	0.65%	0.088%
89	15.066	2158	2159	2160	rBV	1453	812	0.05%	0.007%
90	15.377	2208	2210	2215	rVB3	2676	2199	0.14%	0.018%
91	15.548	2236	2238	2239	rBV2	1879	1272	0.08%	0.011%
92	15.645	2252	2254	2256	rVB2	2021	1488	0.09%	0.012%
93	15.950	2303	2304	2305	rBV	1724	759	0.05%	0.006%
94	16.151	2335	2337	2338	rBV2	1613	1424	0.09%	0.012%
95	16.170	2338	2340	2343	rVB	2351	2016	0.12%	0.017%
96	16.224	2347	2349	2351	rBV2	1848	1520	0.09%	0.013%
97	16.395	2375	2377	2379	rBV2	2148	2589	0.16%	0.022%
98	16.584	2406	2408	2409	rVB2	2293	1229	0.08%	0.010%
99	16.755	2434	2436	2437	rBV2	2276	1699	0.11%	0.014%
100	16.773	2437	2439	2440	rVV2	2040	1531	0.09%	0.013%

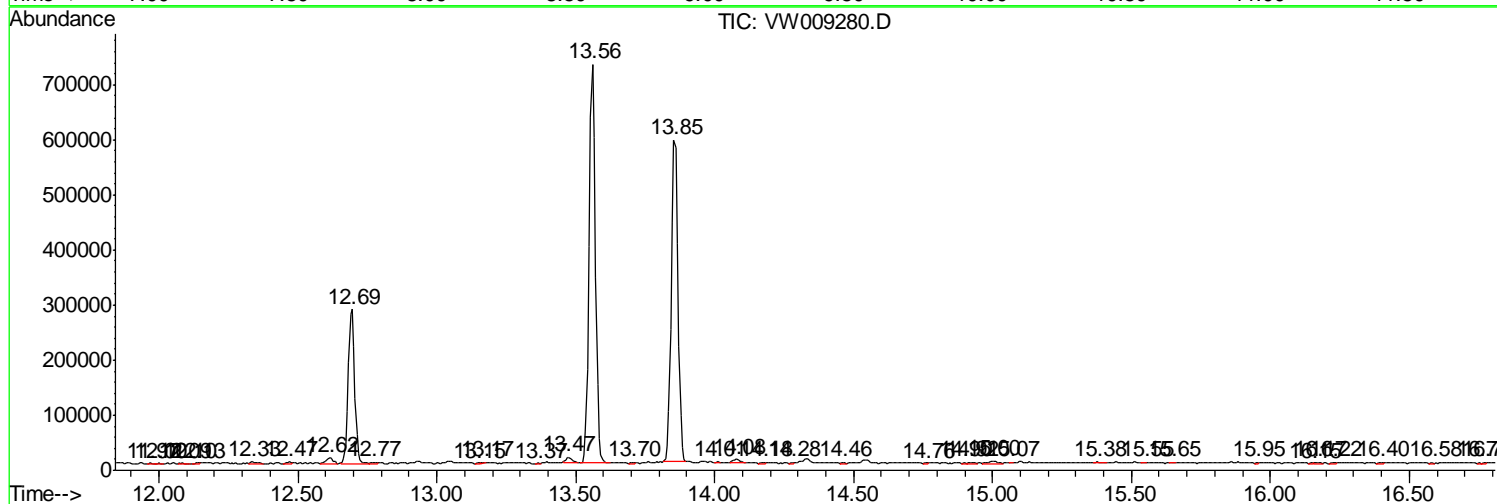
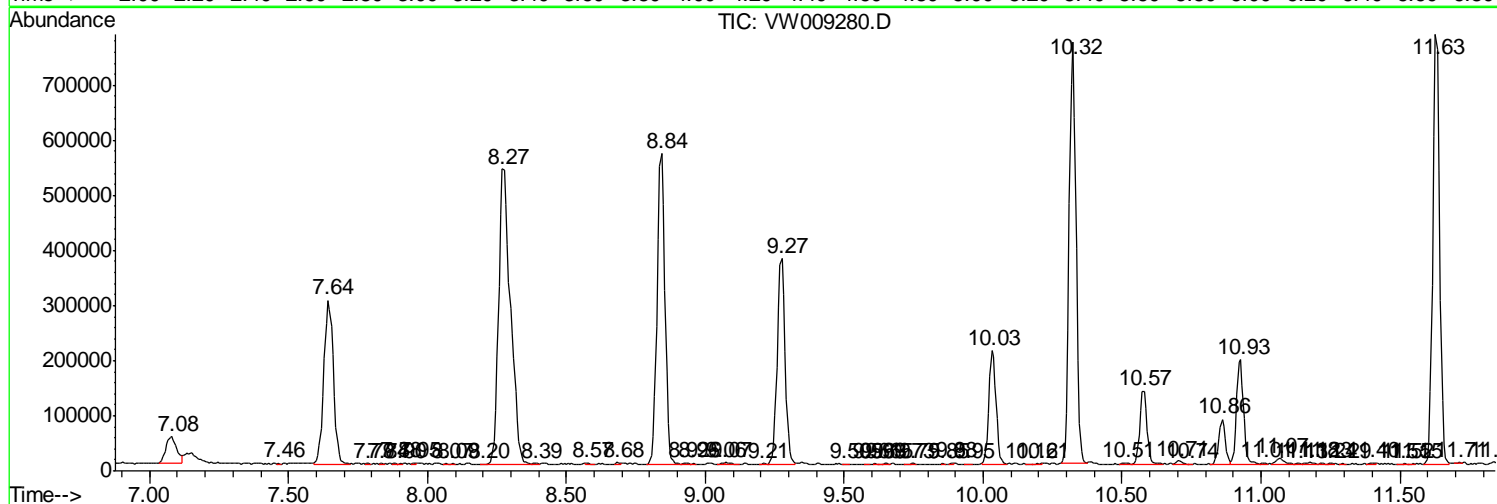
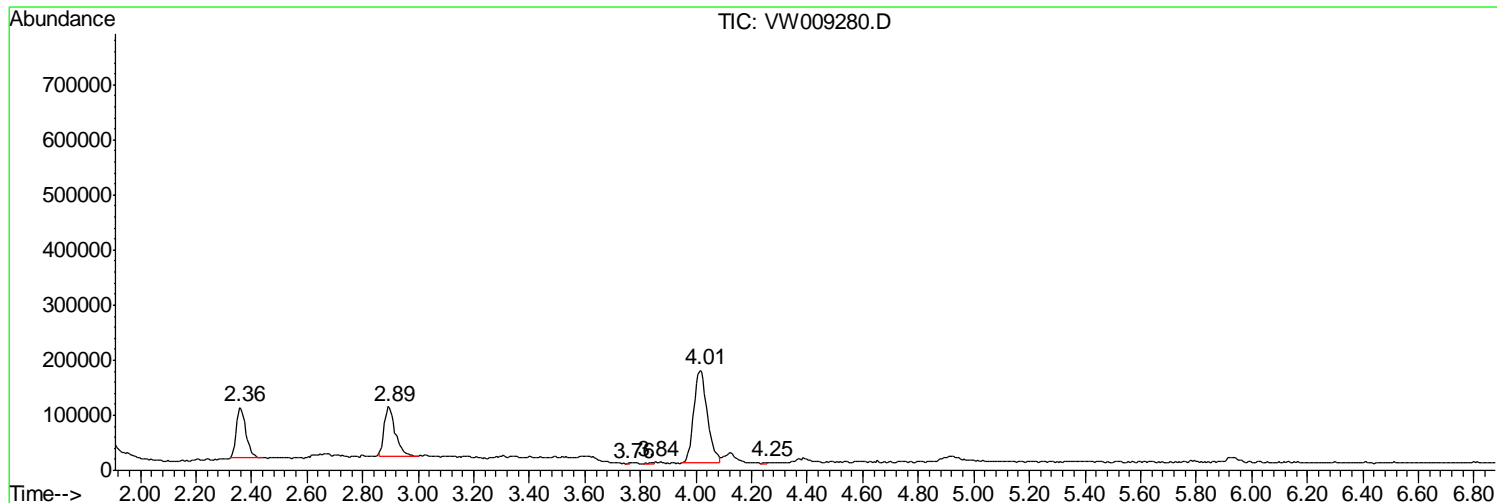
Sum of corrected areas: 11940448

Data Path : Z:\VOASRV\HPCHEM1\MSVOA W\DATA\VW032019\  
 Data File : VW009280.D  
 Acq On : 20 Mar 2019 12:00  
 Operator : SY/VA  
 Sample : K1986-02  
 Misc : 6.17G/10ML/MSVOA W/SOIL  
 ALS Vial : 1 Sample Multiplier: 1

**Instrument :**  
 MSVOA\_W  
**ClientSampleId :**  
 BF0A9

Quant Method : Z:\VOASRV\HPCHEM1\MSVOA\_W\METHOD\SOM2WLM031419S.M  
 Quant Title : VOC Analysis

TIC Library : C:\DATABASE\NIST11.L  
 TIC Integration Parameters: LSCINT.P



Data Path : Z:\VOASRV\HPCHEM1\MSVOA\_W\DATA\VW032019\  
Data File : VW009280.D  
Acq On : 20 Mar 2019 12:00  
Operator : SY/VA  
Sample : K1986-02  
Misc : 6.17G/10ML/MSVOA\_W/SOIL  
ALS Vial : 1 Sample Multiplier: 1

Instrument :  
MSVOA\_W  
ClientSampleId :  
BF0A9

Quant Method : Z:\VOASRV\HPCHEM1\MSVOA\_W\METHOD\SOM2WLM031419S.M  
Quant Title : VOC Analysis

TIC Library : C:\DATABASE\NIST11.L  
TIC Integration Parameters: LSCINT.P

No Library Search Compounds Detected

\*\*\*\*\*

Data Path : Z:\VOASRV\HPCHEM1\MSVOA\_W\DATA\VW032019\  
Data File : VW009280.D  
Acq On : 20 Mar 2019 12:00  
Operator : SY/VA  
Sample : K1986-02  
Misc : 6.17G/10ML/MSVOA\_W/SOIL  
ALS Vial : 1 Sample Multiplier: 1

Instrument :  
MSVOA\_W  
ClientSampleId :  
BF0A9

Quant Method : Z:\VOASRV\HPCHEM1\MSVOA\_W\METHOD\SOM2WLM031419S.M  
Quant Title : VOC Analysis

TIC Library : C:\DATABASE\NIST11.L  
TIC Integration Parameters: LSCINT.P

TIC Top Hit name	RT	EstConc	Units	Response	--Internal Standard--			
					#	RT	Resp	Conc

---