

Data Path : Z:\VOASRV\HPCHEM1\MSVOA W\DATA\VW032519\
 Data File : VW009420.D
 Acq On : 25 Mar 2019 11:34
 Operator : SY/VA
 Sample : K2062-02
 Misc : 11.15G/10ML/MSVOA W/SOIL
 ALS Vial : 1 Sample Multiplier: 1

Instrument :
 MSVOA_W
 ClientSampleId :

Quant Time: Mar 26 07:50:34 2019
 Quant Method : Z:\VOASRV\HPCHEM1\MSVOA_W\METHOD\SOM2WLM031419S.M
 Quant Title : VOC Analysis
 QLast Update : Tue Mar 26 07:46:05 2019
 Response via : Initial Calibration

Internal Standards	R.T.	QIon	Response	Conc	Units	Dev(Min)
1) 1,4-Difluorobenzene	8.84	114	371465	25.00	ug/L	0.00
28) Chlorobenzene-d5	11.63	117	346739	25.00	ug/L	0.00
60) 1,4-Dichlorobenzene-d4	13.56	152	160087	25.00	ug/L	0.00

System Monitoring Compounds

4) Vinyl Chloride-d3	2.36	65	93062	20.96	ug/L	0.00
Spiked Amount	25.000	Range	30 - 150	Recovery	=	83.84%
7) Chloroethane-d5	2.89	69	102835	19.80	ug/L	0.00
Spiked Amount	25.000	Range	30 - 150	Recovery	=	79.20%
10) 1,1-Dichloroethene-d2	4.01	63	154261	16.08	ug/L	0.00
Spiked Amount	25.000	Range	45 - 110	Recovery	=	64.32%
20) 2-Butanone-d5	7.07	46	115975	63.17	ug/L	0.00
Spiked Amount	50.000	Range	20 - 135	Recovery	=	126.34%
24) Chloroform-d	7.64	84	234508	23.13	ug/L	0.00
Spiked Amount	25.000	Range	40 - 150	Recovery	=	92.52%
26) 1,2-Dichloroethane-d4	8.39	65	173	0.03	ug/L	0.09
Spiked Amount	25.000	Range	70 - 130	Recovery	=	0.12%#
29) Benzene-d6	8.27	84	416317	21.77	ug/L	0.00
Spiked Amount	25.000	Range	20 - 135	Recovery	=	87.08%
33) 1,2-Dichloropropane-d6	9.27	67	137694	23.97	ug/L	0.00
Spiked Amount	25.000	Range	70 - 120	Recovery	=	95.88%
37) Toluene-d8	10.32	98	365997	20.70	ug/L	0.00
Spiked Amount	25.000	Range	30 - 130	Recovery	=	82.80%
38) trans-1,3-Dichloropropene-	10.58	79	63855	22.14	ug/L	0.00
Spiked Amount	25.000	Range	30 - 135	Recovery	=	88.56%
39) 2-Hexanone-d5	10.93	63	82593	59.38	ug/L	0.00
Spiked Amount	50.000	Range	20 - 135	Recovery	=	118.76%
48) 1,1,2,2-Tetrachloroethane-	12.69	84	154913	27.39	ug/L	0.00
Spiked Amount	25.000	Range	45 - 120	Recovery	=	109.56%
61) 1,2-Dichlorobenzene-d4	13.86	152	143959	23.45	ug/L	0.00
Spiked Amount	25.000	Range	75 - 120	Recovery	=	93.80%

Target Compounds

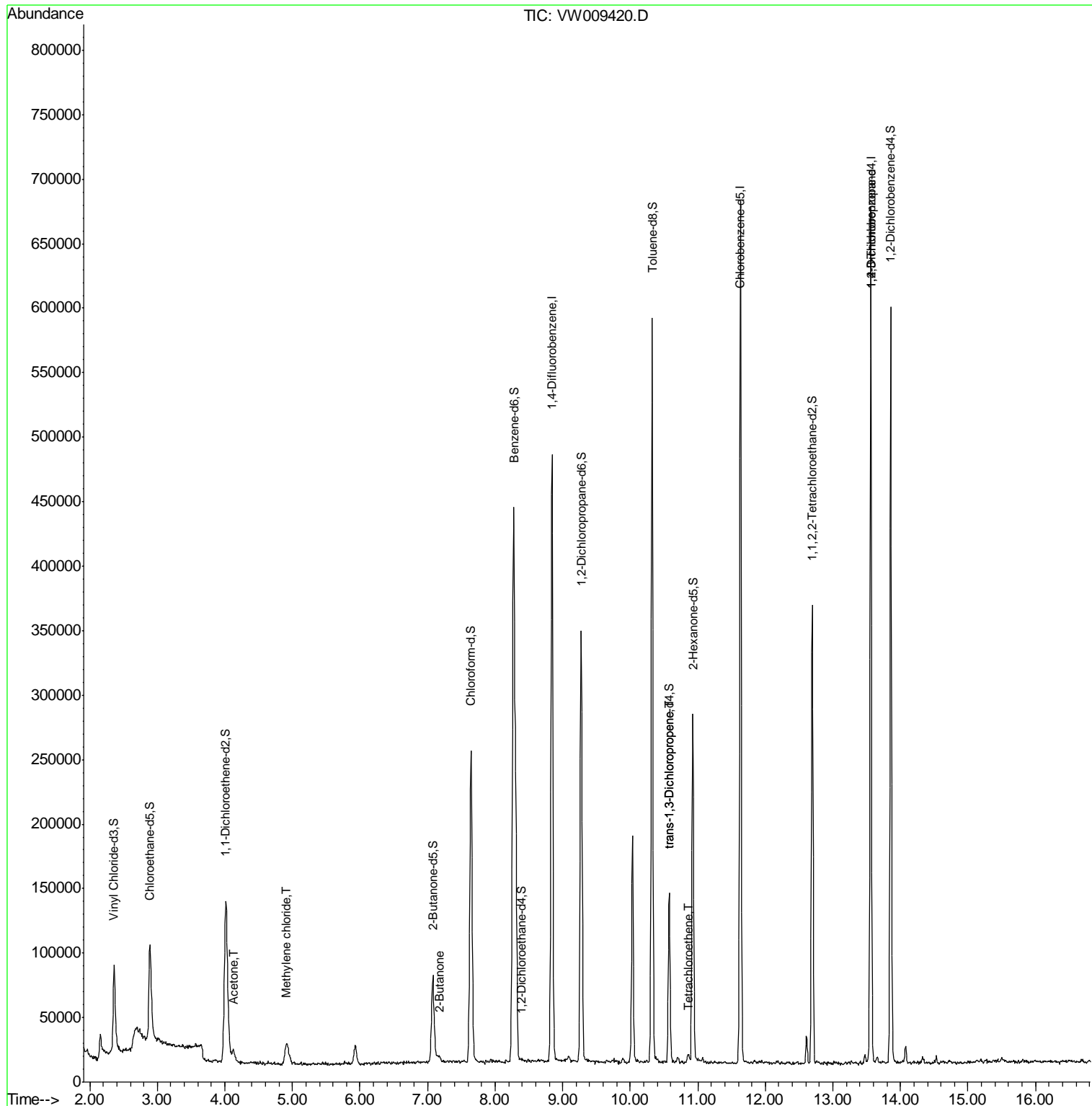
Target Compounds	R.T.	QIon	Response	Conc	Units	Ovalue
13) Acetone	4.12	43	14583	9.687	ug/L	74
16) Methylene chloride	4.90	84	6420	1.185	ug/L	88
21) 2-Butanone	7.18	43	3150	1.515	ug/L	97
45) trans-1,3-Dichloropropene	10.58	75	3373	0.489	ug/L	89
47) Tetrachloroethene	10.87	164	1230	0.288	ug/L	83
59) 1,2,3-Trichloropropane	13.56	75	21153	5.438	ug/L	94

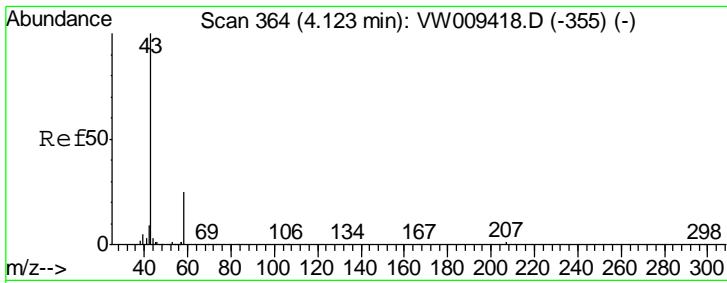
(#) = qualifier out of range (m) = manual integration (+) = signals summed

Data Path : Z:\VOASRV\HPCHEM1\MSVOA W\DATA\VW032519\
 Data File : VW009420.D
 Acq On : 25 Mar 2019 11:34
 Operator : SY/VA
 Sample : K2062-02
 Misc : 11.15G/10ML/MSVOA W/SOIL
 ALS Vial : 1 Sample Multiplier: 1

Instrument :
 MSVOA_W
 ClientSampled :

Quant Time: Mar 26 07:50:34 2019
 Quant Method : Z:\VOASRV\HPCHEM1\MSVOA_W\METHOD\SOM2WLM031419S.M
 Quant Title : VOC Analysis
 QLast Update : Tue Mar 26 07:46:05 2019
 Response via : Initial Calibration

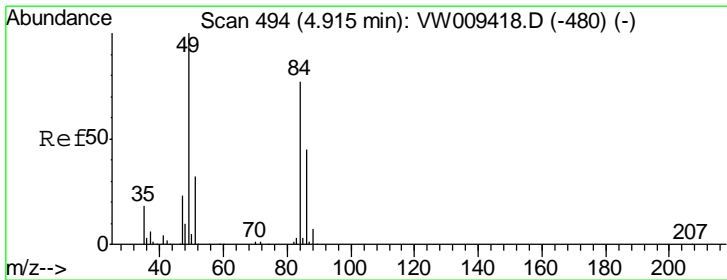
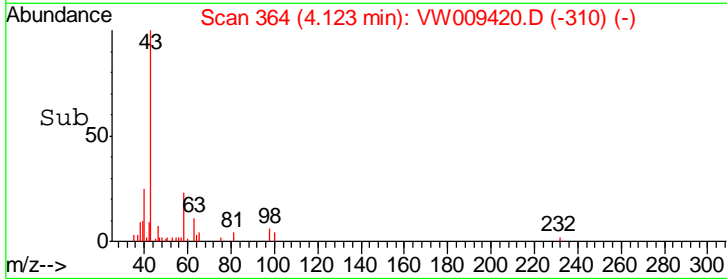
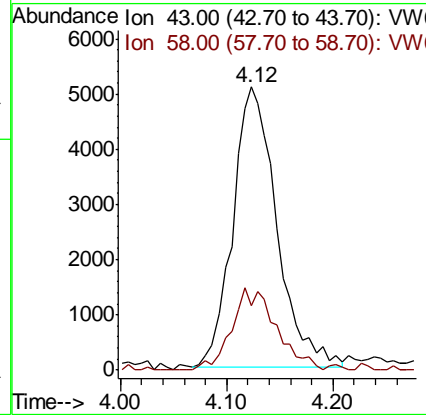
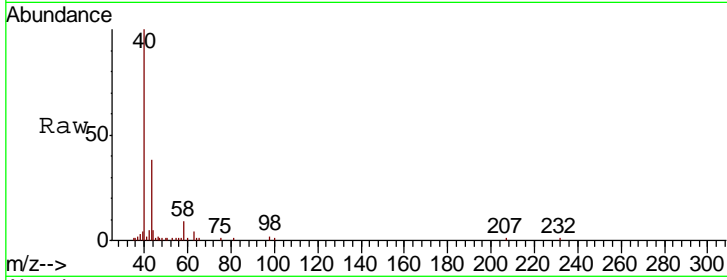




#13
 Acetone
 Concen: 9.687 ug/L
 RT: 4.12 min Scan# 364
 Delta R.T. 0.00 min
 Lab File: VW009420.D
 Acq: 25 Mar 2019 11:34

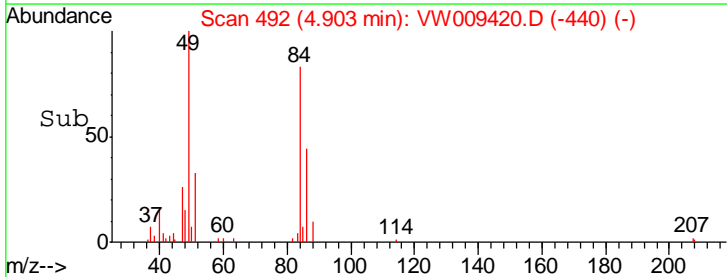
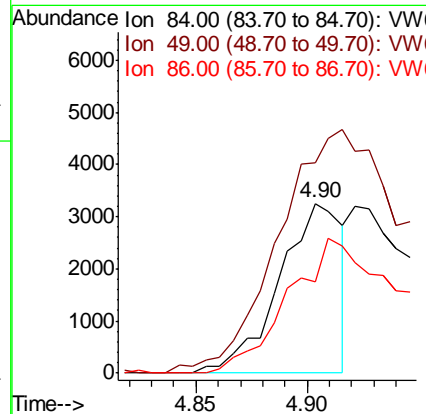
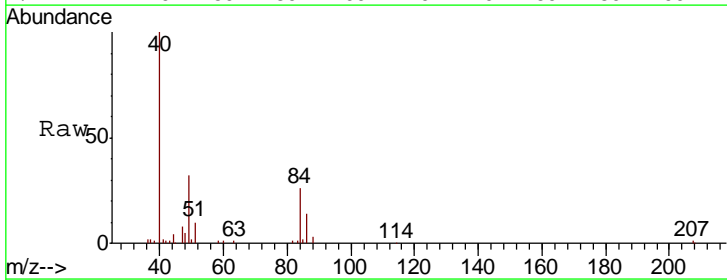
Instrument :
 MSVOA_W
 ClientSampled :

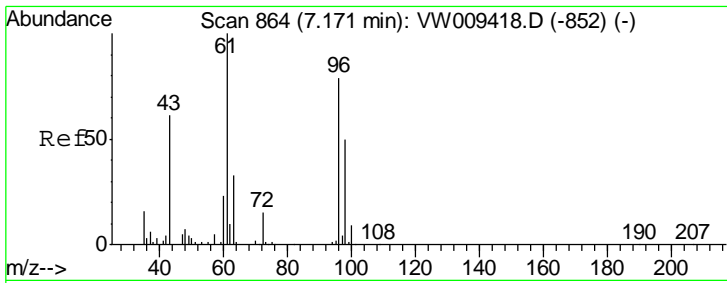
Tgt Ion	Resp	Lower	Upper
43	14583		
58	14.2	0.0	56.2



#16
 Methylene chloride
 Concen: 1.185 ug/L
 RT: 4.90 min Scan# 492
 Delta R.T. -0.01 min
 Lab File: VW009420.D
 Acq: 25 Mar 2019 11:34

Tgt Ion	Resp	Lower	Upper
84	6420		
49	123.7	96.0	178.2
86	53.4	44.4	82.5

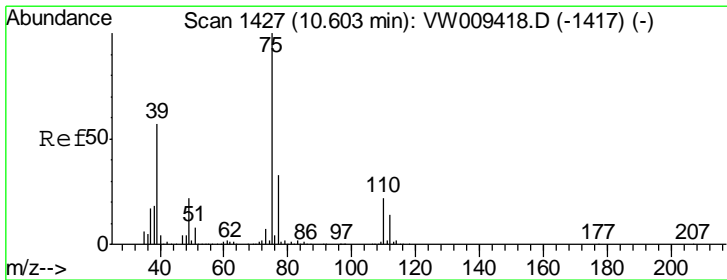
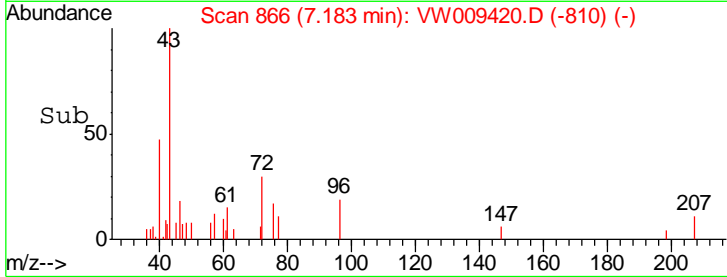
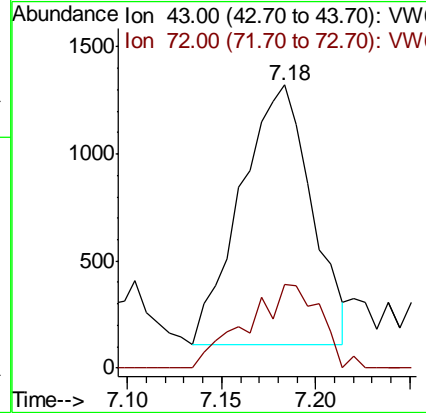
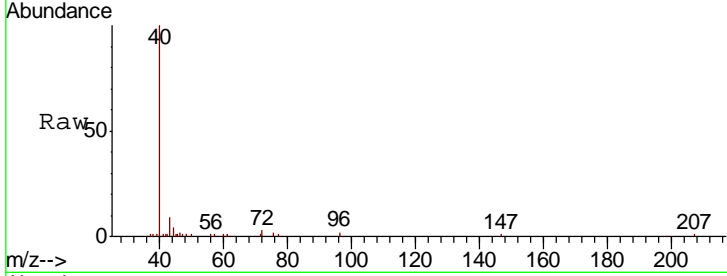




#21
 2-Butanone
 Concen: 1.515 ug/L
 RT: 7.18 min Scan# 866
 Delta R.T. 0.01 min
 Lab File: VW009420.D
 Acq: 25 Mar 2019 11:34

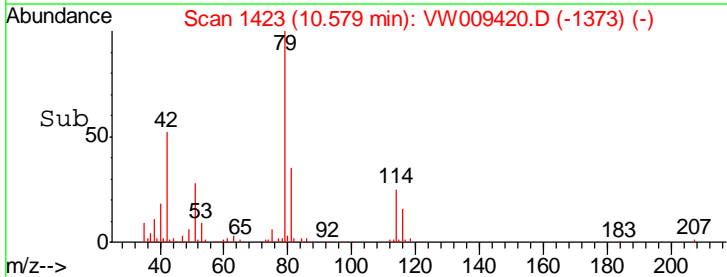
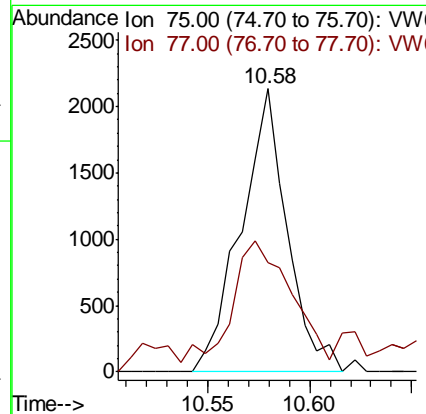
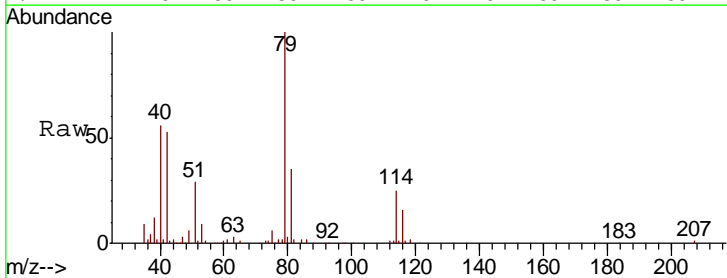
Instrument :
 MSVOA_W
 ClientSampled :

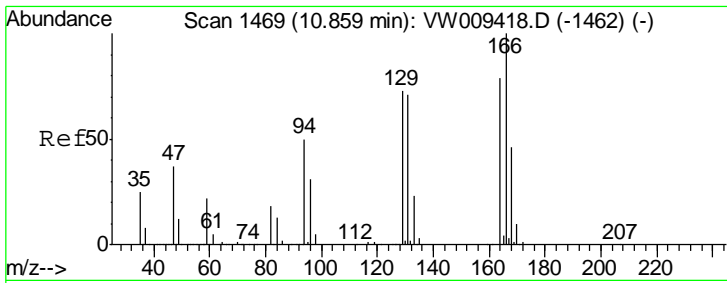
Tgt Ion: 43 Resp: 3150
 Ion Ratio Lower Upper
 43 100
 72 24.3 13.1 39.1



#45
 trans-1,3-Dichloropropene
 Concen: 0.489 ug/L
 RT: 10.58 min Scan# 1423
 Delta R.T. -0.02 min
 Lab File: VW009420.D
 Acq: 25 Mar 2019 11:34

Tgt Ion: 75 Resp: 3373
 Ion Ratio Lower Upper
 75 100
 77 38.4 22.5 41.7

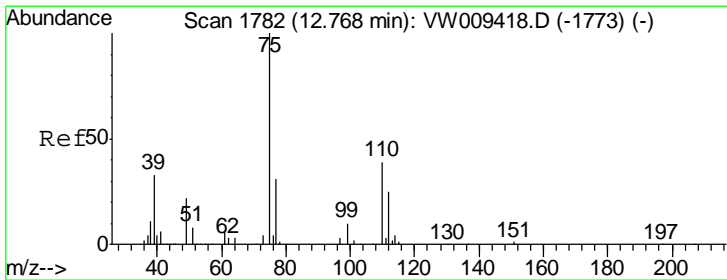
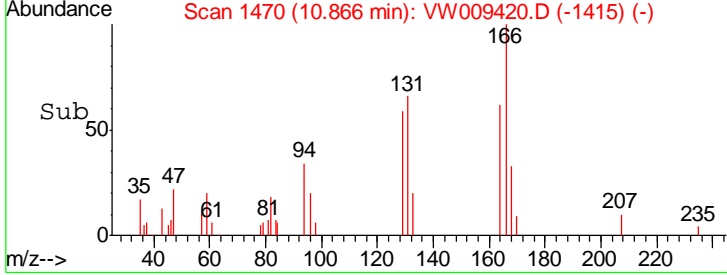
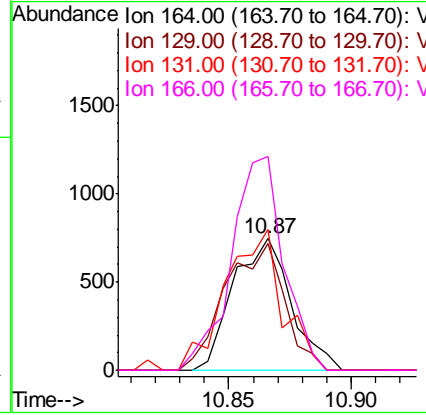
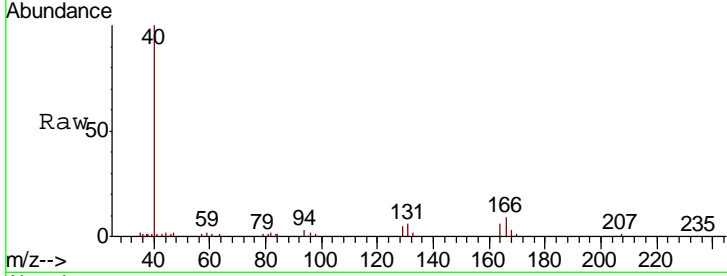




#47
 Tetrachloroethene
 Concen: 0.288 ug/L
 RT: 10.87 min Scan# 1470
 Delta R.T. 0.01 min
 Lab File: VW009420.D
 Acq: 25 Mar 2019 11:34

Instrument : MSVOA_W
 ClientSampled :

Tgt Ion	Resp	Lower	Upper
164	100		
129	96.2	66.5	123.5
131	107.5	62.6	116.3
166	162.6	91.6	170.0



#59
 1,2,3-Trichloropropane
 Concen: 5.438 ug/L
 RT: 13.56 min Scan# 1912
 Delta R.T. 0.79 min
 Lab File: VW009420.D
 Acq: 25 Mar 2019 11:34

Tgt Ion	Resp	Lower	Upper
75	100		
77	36.3	26.2	39.2

