

Data Path : Z:\VOASRV\HPCHEM1\MSVOA W\DATA\VW032719\
 Data File : VW009505.D
 Acq On : 27 Mar 2019 16:12
 Operator : SY/VA
 Sample : K2068-08
 Misc : 5.70G/10ML/MSVOA W/SOIL
 ALS Vial : 1 Sample Multiplier: 1

Instrument :
 MSVOA_W
 ClientSampled :
 BFC98

Integration Parameters: LSCINT.P

Integrator: RTE
 Smoothing : OFF
 Sampling : 1
 Start Thrs: 0.2
 Stop Thrs : 0

Filtering: 5
 Min Area: 0 % of largest Peak
 Max Peaks: 100
 Peak Location: TOP

If leading or trailing edge < 100 prefer < Baseline drop else tangent >
 Peak separation: 5

Method : Z:\VOASRV\HPCHEM1\MSVOA_W\METHOD\SOM2WLM031419S.M
 Title : VOC Analysis

Signal : TIC

peak #	R.T. min	first scan	max scan	last scan	PK TY	peak height	corr. area	corr. % max.	% of total
1	2.148	38	40	41	rBV	6207	4700	0.39%	0.051%
2	2.355	69	74	88	rVB	56374	131276	10.96%	1.413%
3	4.013	334	346	359	rBV	109258	379044	31.66%	4.081%
4	4.568	434	437	438	rBV	1935	1647	0.14%	0.018%
5	4.592	438	441	442	rVV2	2053	1980	0.17%	0.021%
6	4.611	442	444	447	rVV2	1843	1867	0.16%	0.020%
7	4.659	449	452	454	rVV2	2289	2154	0.18%	0.023%
8	4.708	457	460	461	rBV2	941	999	0.08%	0.011%
9	4.769	468	470	474	rBV	1731	2232	0.19%	0.024%
10	4.830	477	480	483	rVV3	1475	2321	0.19%	0.025%
11	4.909	483	493	512	rVV4	35779	145607	12.16%	1.568%
12	5.147	530	532	535	rBV3	1049	942	0.08%	0.010%
13	5.342	559	564	567	rBV2	1816	2508	0.21%	0.027%
14	5.446	579	581	582	rBV	1742	1146	0.10%	0.012%
15	5.531	593	595	597	rVB	1488	1118	0.09%	0.012%
16	5.586	603	604	608	rVB2	1838	1397	0.12%	0.015%
17	5.647	611	614	616	rBV2	1184	1368	0.11%	0.015%
18	5.720	624	626	627	rBV	1320	1186	0.10%	0.013%
19	5.787	635	637	638	rBV	1694	1335	0.11%	0.014%
20	5.934	650	661	671	rBV5	11204	36714	3.07%	0.395%
21	6.080	684	685	687	rBV	1584	1354	0.11%	0.015%
22	6.123	690	692	694	rBV2	1090	1198	0.10%	0.013%
23	6.177	699	701	703	rBV2	1840	1706	0.14%	0.018%
24	6.214	705	707	709	rVB	1437	1173	0.10%	0.013%
25	6.238	709	711	713	rBV3	1598	1920	0.16%	0.021%
26	6.318	721	724	726	rVB2	1864	1887	0.16%	0.020%
27	6.379	732	734	737	rVB3	1127	1113	0.09%	0.012%
28	6.421	737	741	742	rBV2	1380	1062	0.09%	0.011%
29	6.452	745	746	749	rVV2	1380	994	0.08%	0.011%
30	6.482	749	751	753	rVB	2015	1513	0.13%	0.016%
31	6.543	757	761	765	rVB3	1883	3130	0.26%	0.034%
32	6.787	799	801	804	rVV	1376	1096	0.09%	0.012%
33	6.818	804	806	810	rVB2	1386	1633	0.14%	0.018%
34	6.885	815	817	818	rBV	2850	2522	0.21%	0.027%

Data Path : Z:\VOASRV\HPCHEM1\MSVOA W\DATA\VW032719\
 Data File : VW009505.D
 Acq On : 27 Mar 2019 16:12
 Operator : SY/VA
 Sample : K2068-08
 Misc : 5.70G/10ML/MSVOA W/SOIL
 ALS Vial : 1 Sample Multiplier: 1

Instrument :
 MSVOA_W
 ClientSampleId :
 BFC98

Integration Parameters: LSCINT.P

Integrator: RTE
 Smoothing : OFF
 Sampling : 1
 Start Thrs: 0.2
 Stop Thrs : 0

Filtering: 5
 Min Area: 0 % of largest Peak
 Max Peaks: 100
 Peak Location: TOP

If leading or trailing edge < 100 prefer < Baseline drop else tangent >
 Peak separation: 5

Method : Z:\VOASRV\HPCHEM1\MSVOA_W\METHOD\SOM2WLM031419S.M
 Title : VOC Analysis

35	6.970	830	831	838	rVB5	1945	2305	0.19%	0.025%
36	7.074	840	848	858	rBV	41889	121965	10.19%	1.313%
37	7.360	894	895	898	rBV	1395	1475	0.12%	0.016%
38	7.537	917	924	931	rVV5	5375	14161	1.18%	0.152%
39	7.641	932	941	951	rVV	246819	591920	49.44%	6.373%
40	7.909	983	985	986	rBV	1193	1074	0.09%	0.012%
41	8.000	997	1000	1003	rBV	1748	2327	0.19%	0.025%
42	8.031	1003	1005	1007	rVB2	1504	1283	0.11%	0.014%
43	8.061	1007	1010	1011	rBV	1180	1323	0.11%	0.014%
44	8.141	1019	1023	1025	rVB3	951	974	0.08%	0.010%
45	8.275	1035	1045	1059	rBV2	394044	1197278	100.00%	12.890%
46	8.470	1075	1077	1080	rVB2	2083	1982	0.17%	0.021%
47	8.500	1080	1082	1083	rBV	1422	1098	0.09%	0.012%
48	8.567	1092	1093	1097	rVB	1411	1353	0.11%	0.015%
49	8.720	1115	1118	1120	rBV3	1574	1668	0.14%	0.018%
50	8.842	1127	1138	1147	rBV	457916	900176	75.19%	9.692%
51	9.025	1165	1168	1171	rBV3	3249	5333	0.45%	0.057%
52	9.274	1201	1209	1216	rBV	295546	601425	50.23%	6.475%
53	9.531	1248	1251	1253	rVB2	1635	1579	0.13%	0.017%
54	9.591	1255	1261	1262	rBV2	1641	1878	0.16%	0.020%
55	9.640	1267	1269	1271	rBV	1729	1551	0.13%	0.017%
56	9.713	1280	1281	1284	rBV	1154	1176	0.10%	0.013%
57	9.738	1284	1285	1288	rBV2	1900	2291	0.19%	0.025%
58	9.860	1303	1305	1306	rBV2	1734	1178	0.10%	0.013%
59	9.969	1322	1323	1325	rBV	1854	1252	0.10%	0.013%
60	10.030	1327	1333	1342	rVV	149745	272513	22.76%	2.934%
61	10.128	1345	1349	1354	rVV7	6004	9439	0.79%	0.102%
62	10.250	1366	1369	1370	rBV2	3073	2560	0.21%	0.028%
63	10.323	1373	1381	1388	rBV	515819	897933	75.00%	9.667%
64	10.579	1415	1423	1432	rBV	103436	179193	14.97%	1.929%
65	10.768	1450	1454	1455	rBV2	1816	2720	0.23%	0.029%
66	10.927	1473	1480	1492	rBV	162042	296780	24.79%	3.195%
67	11.170	1516	1520	1522	rBV5	2231	3780	0.32%	0.041%
68	11.445	1563	1565	1566	rBV	1425	1278	0.11%	0.014%
69	11.634	1589	1596	1605	rBV	643465	1104512	92.25%	11.892%
70	12.298	1704	1705	1707	rVB	2426	1262	0.11%	0.014%
71	12.347	1707	1713	1714	rBV3	1707	2815	0.24%	0.030%

Data Path : Z:\VOASRV\HPCHEM1\MSVOA W\DATA\VW032719\
 Data File : VW009505.D
 Acq On : 27 Mar 2019 16:12
 Operator : SY/VA
 Sample : K2068-08
 Misc : 5.70G/10ML/MSVOA W/SOIL
 ALS Vial : 1 Sample Multiplier: 1

Instrument :
 MSVOA_W
 ClientSampleId :
 BFC98

Integration Parameters: LSCINT.P

Integrator: RTE
 Smoothing : OFF Filtering: 5
 Sampling : 1 Min Area: 0 % of largest Peak
 Start Thrs: 0.2 Max Peaks: 100
 Stop Thrs : 0 Peak Location: TOP

If leading or trailing edge < 100 prefer < Baseline drop else tangent >
 Peak separation: 5

Method : Z:\VOASRV\HPCHEM1\MSVOA_W\METHOD\SOM2WLM031419S.M
 Title : VOC Analysis

72	12.432	1725	1727	1729	rBV	1750	1779	0.15%	0.019%
73	12.469	1732	1733	1736	rVV3	1921	1925	0.16%	0.021%
74	12.499	1736	1738	1739	rVB2	1681	992	0.08%	0.011%
75	12.609	1751	1756	1763	rVB3	15332	26067	2.18%	0.281%
76	12.695	1763	1770	1782	rVB	261206	426634	35.63%	4.593%
77	12.829	1790	1792	1793	rBV2	1362	1181	0.10%	0.013%
78	12.859	1795	1797	1800	rBV3	1373	1640	0.14%	0.018%
79	12.896	1800	1803	1806	rBV3	2246	3513	0.29%	0.038%
80	13.121	1838	1840	1844	rVB2	2644	2930	0.24%	0.032%
81	13.170	1844	1848	1849	rBV	1359	1450	0.12%	0.016%
82	13.268	1861	1864	1865	rBV	1984	2137	0.18%	0.023%
83	13.310	1869	1871	1874	rVB4	1724	1647	0.14%	0.018%
84	13.377	1880	1882	1883	rBV2	1182	1000	0.08%	0.011%
85	13.475	1893	1898	1902	rBV5	14209	23026	1.92%	0.248%
86	13.560	1905	1912	1919	rVV	610669	946743	79.07%	10.193%
87	13.810	1949	1953	1954	rBV2	2761	4409	0.37%	0.047%
88	13.859	1954	1961	1967	rVV	487014	816557	68.20%	8.791%
89	14.072	1993	1996	2000	rBV2	5919	8650	0.72%	0.093%
90	14.335	2035	2039	2045	rVB7	7091	9804	0.82%	0.106%
91	14.420	2051	2053	2055	rBV2	1892	1449	0.12%	0.016%
92	14.621	2084	2086	2092	rVB4	2714	3512	0.29%	0.038%
93	14.865	2122	2126	2128	rVV2	2410	2837	0.24%	0.031%
94	14.944	2136	2139	2140	rBV2	2798	2808	0.23%	0.030%
95	15.505	2225	2231	2235	rBV2	3955	8444	0.71%	0.091%
96	15.706	2262	2264	2267	rBV2	1689	1574	0.13%	0.017%
97	15.914	2296	2298	2300	rBV3	1547	1543	0.13%	0.017%
98	15.956	2303	2305	2306	rBV2	2176	2214	0.18%	0.024%
99	16.566	2404	2405	2409	rVB4	1759	1910	0.16%	0.021%
100	16.609	2411	2412	2415	rVV2	1952	1177	0.10%	0.013%

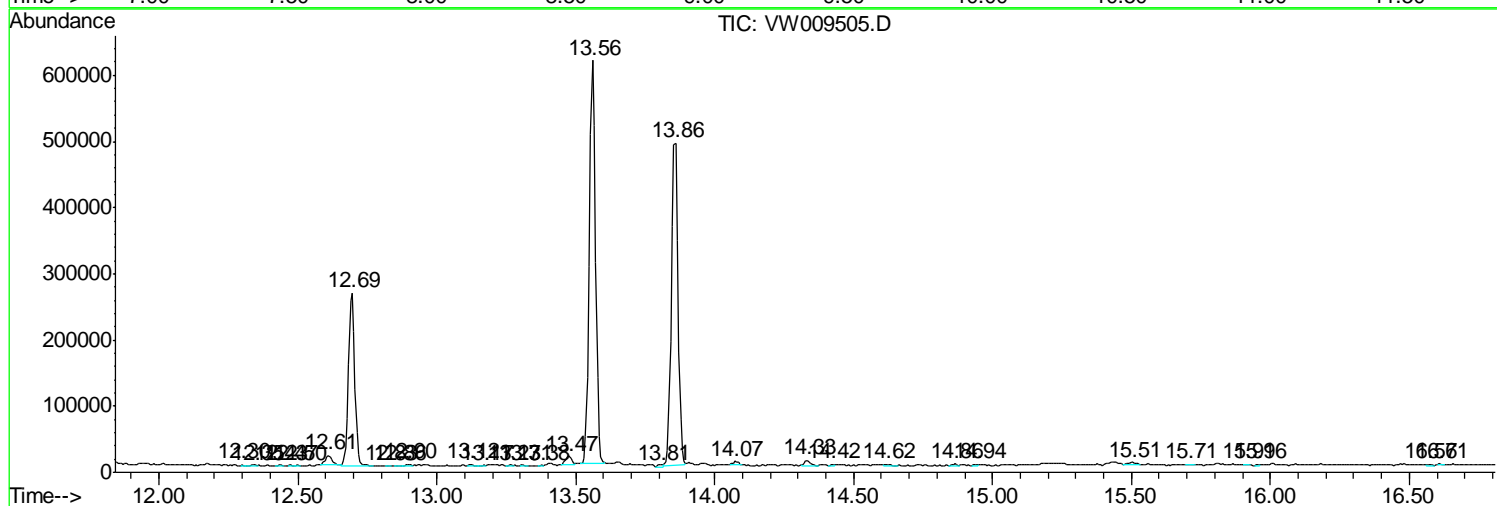
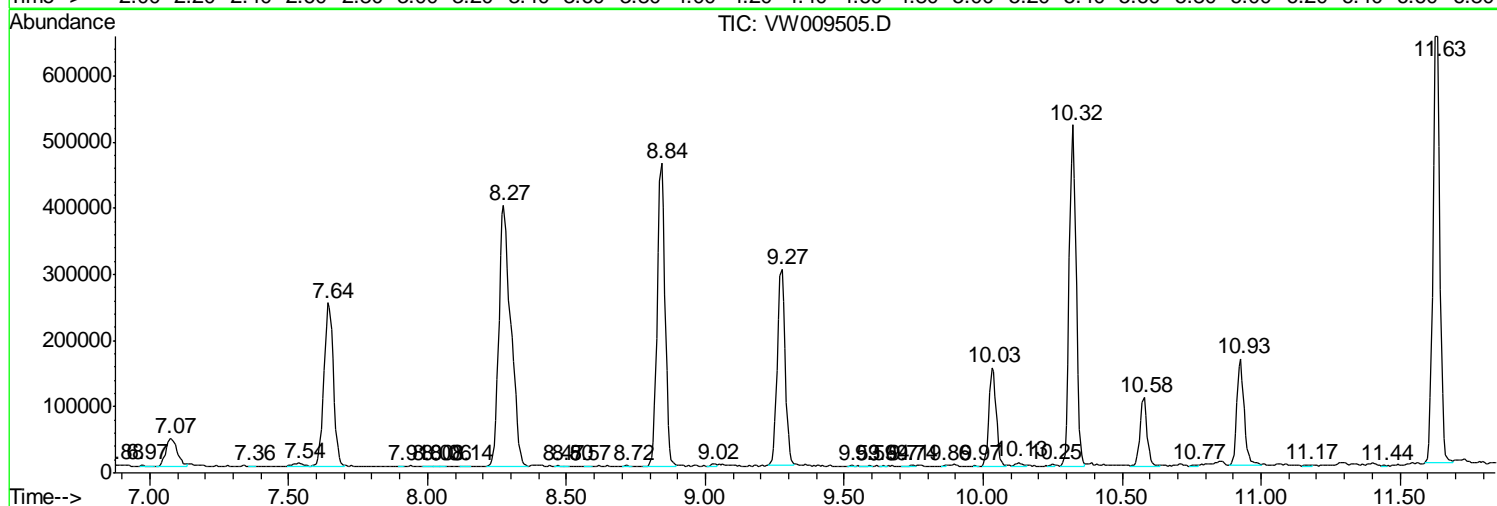
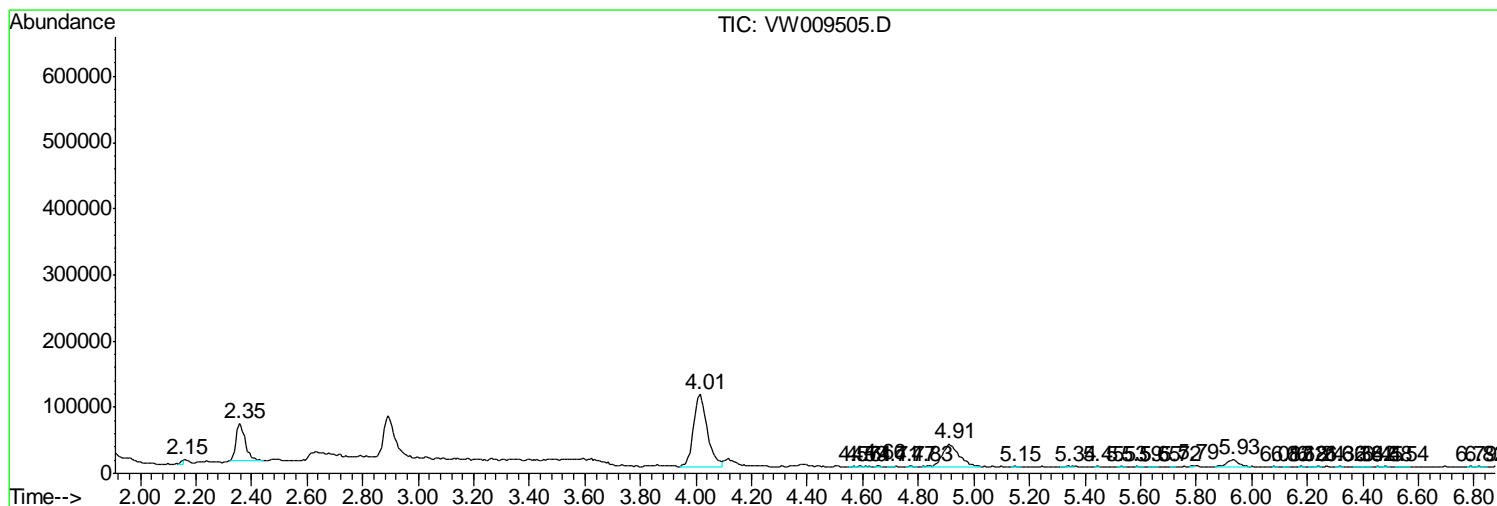
Sum of corrected areas: 9288204

Data Path : Z:\VOASRV\HPCHEM1\MSVOA W\DATA\VW032719\
 Data File : VW009505.D
 Acq On : 27 Mar 2019 16:12
 Operator : SY/VA
 Sample : K2068-08
 Misc : 5.70G/10ML/MSVOA W/SOIL
 ALS Vial : 1 Sample Multiplier: 1

Instrument :
 MSVOA_W
 ClientSampleId :
 BFC98

Quant Method : Z:\VOASRV\HPCHEM1\MSVOA_W\METHOD\SOM2WLM031419S.M
 Quant Title : VOC Analysis

TIC Library : C:\DATABASE\NIST11.L
 TIC Integration Parameters: LSCINT.P



Data Path : Z:\VOASRV\HPCHEM1\MSVOA_W\DATA\VW032719\
Data File : VW009505.D
Acq On : 27 Mar 2019 16:12
Operator : SY/VA
Sample : K2068-08
Misc : 5.70G/10ML/MSVOA_W/SOIL
ALS Vial : 1 Sample Multiplier: 1

Instrument :
MSVOA_W
ClientSampleId :
BFC98

Quant Method : Z:\VOASRV\HPCHEM1\MSVOA_W\METHOD\SOM2WLM031419S.M
Quant Title : VOC Analysis

TIC Library : C:\DATABASE\NIST11.L
TIC Integration Parameters: LSCINT.P

No Library Search Compounds Detected

Data Path : Z:\VOASRV\HPCHEM1\MSVOA_W\DATA\VW032719\
Data File : VW009505.D
Acq On : 27 Mar 2019 16:12
Operator : SY/VA
Sample : K2068-08
Misc : 5.70G/10ML/MSVOA_W/SOIL
ALS Vial : 1 Sample Multiplier: 1

Instrument :
MSVOA_W
ClientSampleId :
BFC98

Quant Method : Z:\VOASRV\HPCHEM1\MSVOA_W\METHOD\SOM2WLM031419S.M
Quant Title : VOC Analysis

TIC Library : C:\DATABASE\NIST11.L
TIC Integration Parameters: LSCINT.P

TIC Top Hit name	RT	EstConc	Units	Response	--Internal Standard--			
					#	RT	Resp	Conc
