

Data Path : Z:\VOASRV\HPCHEM1\MSVOA_W\DATA\VW032819\
 Data File : VW009531.D
 Acq On : 28 Mar 2019 11:19
 Operator : SY/VA
 Sample : VW0328SBL01
 Misc : 5.00G/10ML/MSVOA_W/SOIL
 ALS Vial : 1 Sample Multiplier: 1

Instrument :
 MSVOA_W
 ClientSampleId :
 VBLK16

Quant Time: Mar 29 05:43:08 2019
 Quant Method : Z:\VOASRV\HPCHEM1\MSVOA_W\METHOD\SOM2WLM031419S.M
 Quant Title : VOC Analysis
 QLast Update : Fri Mar 29 05:35:33 2019
 Response via : Initial Calibration

Internal Standards	R.T.	QIon	Response	Conc	Units	Dev(Min)
1) 1,4-Difluorobenzene	8.84	114	469415	25.00	ug/L	0.00
28) Chlorobenzene-d5	11.63	117	451958	25.00	ug/L	0.00
60) 1,4-Dichlorobenzene-d4	13.56	152	211489	25.00	ug/L	0.00

System Monitoring Compounds

4) Vinyl Chloride-d3	2.35	65	108567	19.35	ug/L	0.00
Spiked Amount	25.000	Range	30 - 150	Recovery	=	77.40%
7) Chloroethane-d5	2.89	69	119699	18.24	ug/L	0.02
Spiked Amount	25.000	Range	30 - 150	Recovery	=	72.96%
10) 1,1-Dichloroethene-d2	4.01	63	182486	15.05	ug/L	0.00
Spiked Amount	25.000	Range	45 - 110	Recovery	=	60.20%
20) 2-Butanone-d5	7.07	46	96261	41.49	ug/L	0.00
Spiked Amount	50.000	Range	20 - 135	Recovery	=	82.98%
24) Chloroform-d	7.64	84	270202	21.09	ug/L	0.00
Spiked Amount	25.000	Range	40 - 150	Recovery	=	84.36%
26) 1,2-Dichloroethane-d4	8.30	65	167648	21.72	ug/L	0.00
Spiked Amount	25.000	Range	70 - 130	Recovery	=	86.88%
29) Benzene-d6	8.27	84	491561	19.72	ug/L	0.00
Spiked Amount	25.000	Range	20 - 135	Recovery	=	78.88%
33) 1,2-Dichloropropane-d6	9.27	67	157254	21.01	ug/L	0.00
Spiked Amount	25.000	Range	70 - 120	Recovery	=	84.04%
37) Toluene-d8	10.32	98	451493	19.59	ug/L	0.00
Spiked Amount	25.000	Range	30 - 130	Recovery	=	78.36%
38) trans-1,3-Dichloropropene-	10.58	79	68737	18.28	ug/L	0.00
Spiked Amount	25.000	Range	30 - 135	Recovery	=	73.12%
39) 2-Hexanone-d5	10.93	63	68808	37.95	ug/L	0.00
Spiked Amount	50.000	Range	20 - 135	Recovery	=	75.90%
48) 1,1,2,2-Tetrachloroethane-	12.69	84	148528	20.15	ug/L	0.00
Spiked Amount	25.000	Range	45 - 120	Recovery	=	80.60%
61) 1,2-Dichlorobenzene-d4	13.86	152	174120	21.47	ug/L	0.00
Spiked Amount	25.000	Range	75 - 120	Recovery	=	85.88%

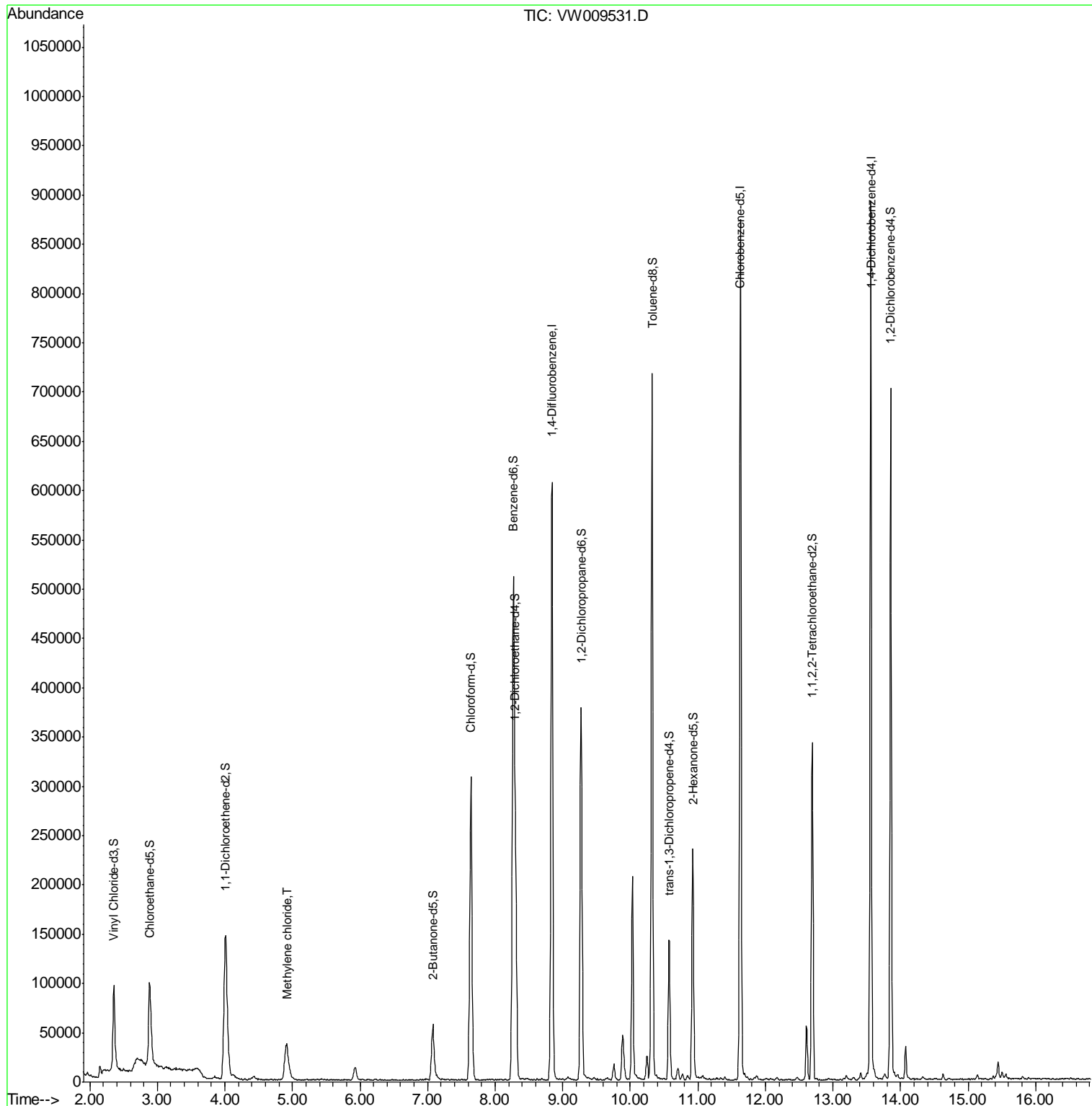
Target Compounds	R.T.	QIon	Response	Conc	Units	Qvalue
16) Methylene chloride	4.91	84	32079	4.686	ug/L	98

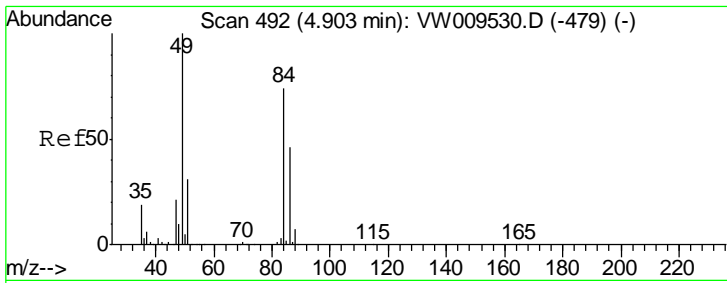
(#) = qualifier out of range (m) = manual integration (+) = signals summed

Data Path : Z:\VOASRV\HPCHEM1\MSVOA_W\DATA\VW032819\
 Data File : VW009531.D
 Acq On : 28 Mar 2019 11:19
 Operator : SY/VA
 Sample : VW0328SBL01
 Misc : 5.00G/10ML/MSVOA_W/SOIL
 ALS Vial : 1 Sample Multiplier: 1

Instrument :
 MSVOA_W
 Client Sampled :
 VBLK16

Quant Time: Mar 29 05:43:08 2019
 Quant Method : Z:\VOASRV\HPCHEM1\MSVOA_W\METHOD\SOM2WLM031419S.M
 Quant Title : VOC Analysis
 QLast Update : Fri Mar 29 05:35:33 2019
 Response via : Initial Calibration



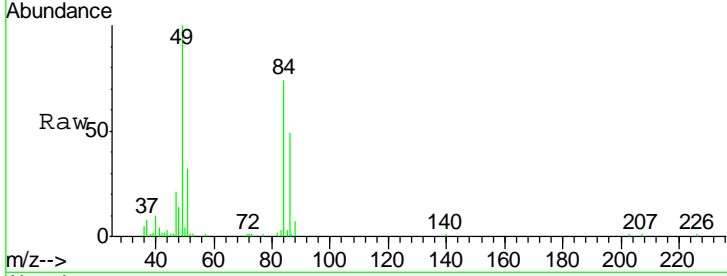


#16
 Methylene chloride
 Concen: 4.686 ug/L
 RT: 4.91 min Scan# 493
 Delta R.T. 0.01 min
 Lab File: VW009531.D
 Acq: 28 Mar 2019 11:19

Instrument :
 MSVOA_W
 ClientSampled :
 VBLK16

Tgt Ion: 84 Resp: 32079

Ion	Ratio	Lower	Upper
84	100		
49	135.5	96.0	178.2
86	67.0	44.4	82.5



Abundance Ion 84.00 (83.70 to 84.70): VW
 15000 Ion 49.00 (48.70 to 49.70): VW
 Ion 86.00 (85.70 to 86.70): VW

