

Data Path : Z:\voasrv\HPCHEM1\MSVOA\_W\Data\VW032921\  
 Data File : VW018475.D  
 Acq On : 29 Mar 2021 10:36  
 Operator : SY/VA  
 Sample : M1859-01  
 Misc : 5.28G/10ML/MSVOA\_W/SOIL  
 ALS Vial : 4 Sample Multiplier: 1

Instrument :  
 MSVOA\_W  
 ClientSampled :  
 BG502

Quant Time: Mar 30 03:10:51 2021  
 Quant Method : Z:\voasrv\HPCHEM1\MSVOA\_W\Method\SOM2WLM031921S.M  
 Quant Title : VOC Analysis  
 QLast Update : Tue Mar 30 03:10:03 2021  
 Response via : Initial Calibration

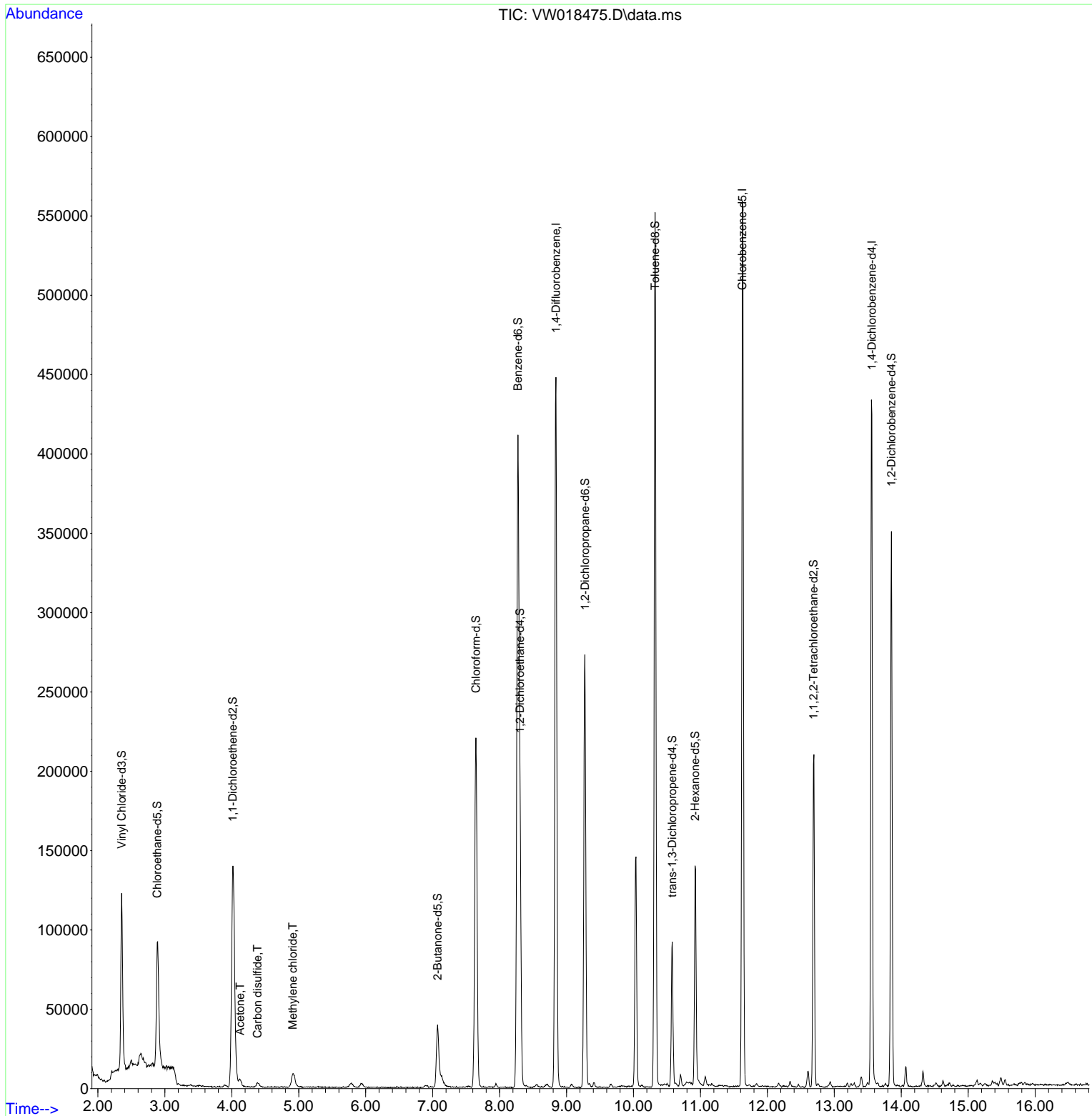
Compound	R.T.	QIon	Response	Conc	Units	Dev(Min)
-----						
Internal Standards						
1) 1,4-Difluorobenzene	8.842	114	374948	25.00	ug/L	0.00
28) Chlorobenzene-d5	11.628	117	305608	25.00	ug/L	0.00
60) 1,4-Dichlorobenzene-d4	13.560	152	103908	25.00	ug/L	0.00
System Monitoring Compounds						
4) Vinyl Chloride-d3	2.355	65	122701	23.52	ug/L	0.00
Spiked Amount	25.000	Range 30 - 150	Recovery =	94.08%		
7) Chloroethane-d5	2.885	69	107448	23.53	ug/L	0.00
Spiked Amount	25.000	Range 30 - 150	Recovery =	94.12%		
10) 1,1-Dichloroethene-d2	4.013	63	151829	16.85	ug/L	-0.01
Spiked Amount	25.000	Range 45 - 110	Recovery =	67.40%		
20) 2-Butanone-d5	7.074	46	62418	53.73	ug/L	0.00
Spiked Amount	50.000	Range 20 - 135	Recovery =	107.46%		
24) Chloroform-d	7.647	84	223366	23.39	ug/L	0.00
Spiked Amount	25.000	Range 40 - 150	Recovery =	93.56%		
26) 1,2-Dichloroethane-d4	8.305	65	131895	23.66	ug/L	0.00
Spiked Amount	25.000	Range 70 - 130	Recovery =	94.64%		
29) Benzene-d6	8.275	84	419856	25.84	ug/L	0.00
Spiked Amount	25.000	Range 20 - 135	Recovery =	103.36%		
33) 1,2-Dichloropropane-d6	9.275	67	121272	25.88	ug/L	0.00
Spiked Amount	25.000	Range 70 - 120	Recovery =	103.52%		
37) Toluene-d8	10.323	98	369263	23.61	ug/L	0.00
Spiked Amount	25.000	Range 30 - 130	Recovery =	94.44%		
38) trans-1,3-Dichloroprop...	10.579	79	49013	20.28	ug/L	0.00
Spiked Amount	25.000	Range 30 - 135	Recovery =	81.12%		
39) 2-Hexanone-d5	10.921	63	48205	52.56	ug/L	0.00
Spiked Amount	50.000	Range 20 - 135	Recovery =	105.12%		
48) 1,1,2,2-Tetrachloroeth...	12.689	84	99081	23.63	ug/L	0.00
Spiked Amount	25.000	Range 45 - 120	Recovery =	94.52%		
61) 1,2-Dichlorobenzene-d4	13.853	152	89736	24.29	ug/L	0.00
Spiked Amount	25.000	Range 75 - 120	Recovery =	97.16%		
Target Compounds						
						Qvalue
13) Acetone	4.123	43	8115	9.72	ug/L	71
14) Carbon disulfide	4.385	76	3802	0.27	ug/L #	83
16) Methylene chloride	4.909	84	7891	1.28	ug/L	95
-----						

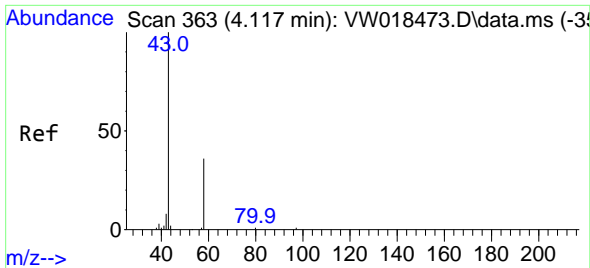
(#) = qualifier out of range (m) = manual integration (+) = signals summed

Data Path : Z:\voasrv\HPCHEM1\MSVOA\_W\Data\VW032921\  
 Data File : VW018475.D  
 Acq On : 29 Mar 2021 10:36  
 Operator : SY/VA  
 Sample : M1859-01  
 Misc : 5.28G/10ML/MSVOA\_W/SOIL  
 ALS Vial : 4 Sample Multiplier: 1

Instrument :  
 MSVOA\_W  
 ClientSampleId :  
 BG502

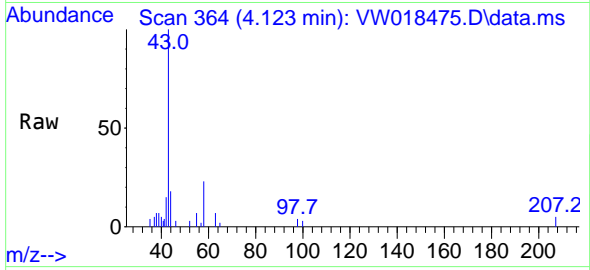
Quant Time: Mar 30 03:10:51 2021  
 Quant Method : Z:\voasrv\HPCHEM1\MSVOA\_W\Method\SOM2WLM031921S.M  
 Quant Title : VOC Analysis  
 QLast Update : Tue Mar 30 03:10:03 2021  
 Response via : Initial Calibration



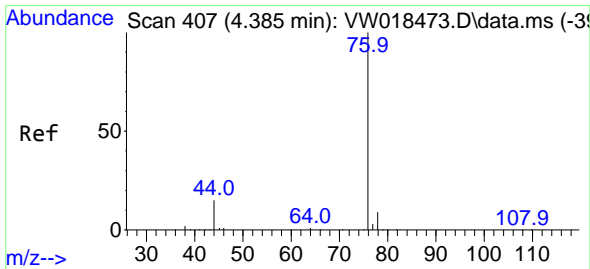
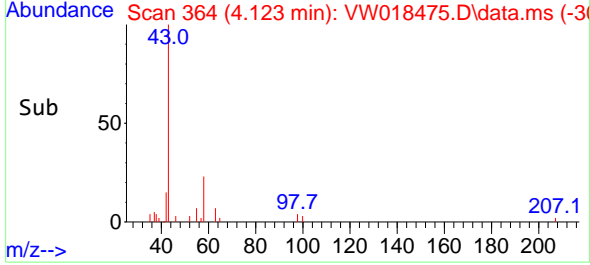
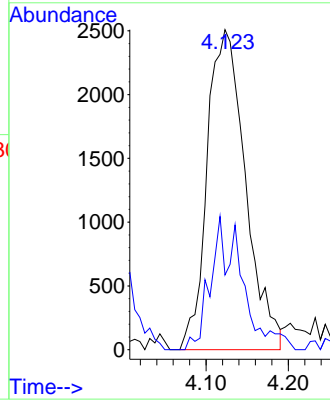


#13  
 Acetone  
 Concen: 9.72 ug/L  
 RT: 4.123 min Scan# 364  
 Delta R.T. 0.006 min  
 Lab File: VW018475.D  
 Acq: 29 Mar 2021 10:36

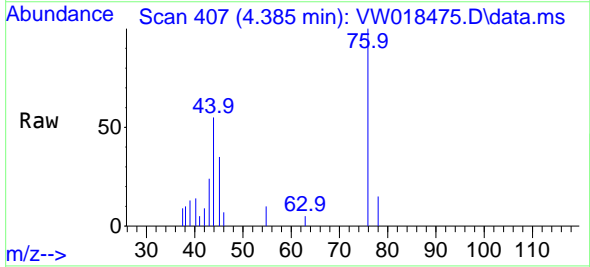
Instrument :  
 MSVOA\_W  
 ClientSampled :  
 BG502



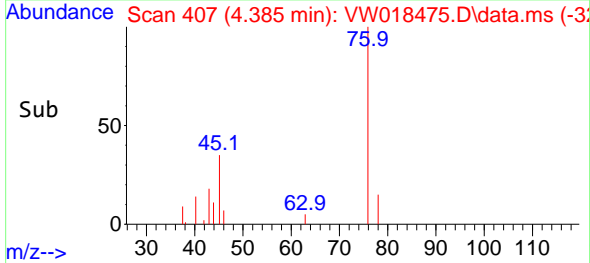
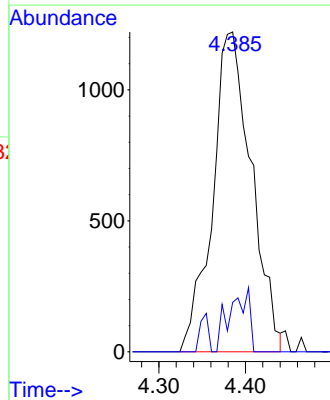
Tgt Ion: 43 Resp: 8115  
 Ion Ratio Lower Upper  
 43 100  
 58 15.4 0.0 62.2

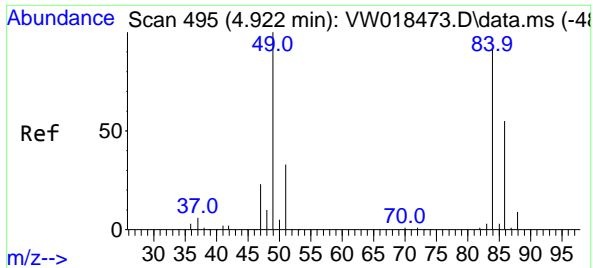


#14  
 Carbon disulfide  
 Concen: 0.27 ug/L  
 RT: 4.385 min Scan# 407  
 Delta R.T. 0.000 min  
 Lab File: VW018475.D  
 Acq: 29 Mar 2021 10:36



Tgt Ion: 76 Resp: 3802  
 Ion Ratio Lower Upper  
 76 100  
 78 15.5 7.4 11.2#





#16  
 Methylene chloride  
 Concen: 1.28 ug/L  
 RT: 4.909 min Scan# 493  
 Delta R.T. -0.012 min  
 Lab File: VW018475.D  
 Acq: 29 Mar 2021 10:36

**Instrument :**  
 MSVOA\_W  
**ClientSampled :**  
 BG502

Tgt Ion: 84 Resp: 7891

Ion	Ratio	Lower	Upper
84	100		
49	103.7	74.4	138.2
86	58.4	46.1	85.7

