

Data Path : Z:\voasrv\HPCHEM1\MSVOA_W\Data\VW032921\
 Data File : VW018482.D
 Acq On : 29 Mar 2021 13:41
 Operator : SY/VA
 Sample : M1816-12
 Misc : 5.48G/10ML/MSVOA_W/SOIL
 ALS Vial : 11 Sample Multiplier: 1

Instrument :
 MSVOA_W
 ClientSampleId :
 BG3P0

Integration Parameters: LSCINT.P

Integrator: RTE
 Smoothing : OFF Filtering: 5
 Sampling : 1 Min Area: 0 % of largest Peak
 Start Thrs: 0.2 Max Peaks: 100
 Stop Thrs : 0 Peak Location: TOP

If leading or trailing edge < 100 prefer < Baseline drop else tangent >
 Peak separation: 5

Method : Z:\voasrv\HPCHEM1\MSVOA_W\Method\SOM2WLM031921S.M
 Title : VOC Analysis

Signal : TIC: VW018482.D\data.ms

peak #	R.T. min	first scan	max scan	last scan	PK TY	peak height	corr. area	corr. % max.	% of total
1	2.215	47	51	53	rBV3	5603	8222	0.55%	0.070%
2	2.355	68	74	84	rBV	116436	237481	15.87%	2.025%
3	2.891	155	162	176	rVB	89940	235275	15.72%	2.006%
4	3.312	227	231	234	rBV4	836	1017	0.07%	0.009%
5	3.385	239	243	246	rBV4	756	1412	0.09%	0.012%
6	3.690	290	293	295	rVB4	710	729	0.05%	0.006%
7	4.019	335	347	368	rBV	156335	520198	34.76%	4.436%
8	4.653	448	451	453	rBV2	718	709	0.05%	0.006%
9	4.922	483	495	509	rVV4	13802	51084	3.41%	0.436%
10	5.056	515	517	520	rBV2	705	787	0.05%	0.007%
11	5.135	527	530	532	rBV3	541	706	0.05%	0.006%
12	5.720	624	626	630	rBV3	704	1071	0.07%	0.009%
13	5.946	653	663	670	rBV7	3120	9790	0.65%	0.083%
14	6.909	818	821	827	rBV5	697	1154	0.08%	0.010%
15	7.080	839	849	868	rBV3	37300	123000	8.22%	1.049%
16	7.275	879	881	888	rVB3	1026	1587	0.11%	0.014%
17	7.549	918	926	929	rBV5	1216	2805	0.19%	0.024%
18	7.647	932	942	955	rBV	261387	655486	43.80%	5.589%
19	7.805	967	968	971	rVB2	683	677	0.05%	0.006%
20	7.878	978	980	983	rBV4	777	967	0.06%	0.008%
21	7.952	987	992	997	rVB5	2229	3527	0.24%	0.030%
22	8.275	1033	1045	1061	rBV2	508551	1496669	100.00%	12.762%
23	8.628	1101	1103	1105	rVV3	698	710	0.05%	0.006%
24	8.701	1109	1115	1120	rBV9	673	1529	0.10%	0.013%
25	8.842	1129	1138	1150	rBV	585064	1147209	76.65%	9.782%
26	9.079	1172	1177	1184	rVB7	3482	5715	0.38%	0.049%
27	9.140	1184	1187	1190	rVB2	892	947	0.06%	0.008%
28	9.274	1200	1209	1218	rBV	333045	676525	45.20%	5.769%
29	9.665	1264	1273	1280	rBV7	2841	7643	0.51%	0.065%
30	9.756	1286	1288	1290	rBV2	877	890	0.06%	0.008%
31	9.884	1307	1309	1312	rVV4	934	993	0.07%	0.008%
32	9.927	1312	1316	1317	rVV3	760	824	0.06%	0.007%
33	10.037	1326	1334	1342	rVV	187080	332989	22.25%	2.839%
34	10.244	1366	1368	1370	rVB2	1031	749	0.05%	0.006%
35	10.323	1370	1381	1392	rBV	703225	1264613	84.50%	10.784%
36	10.439	1397	1400	1404	rBV5	1308	2294	0.15%	0.020%

Data Path : Z:\voasrv\HPCHEM1\MSVOA_W\Data\VW032921\
 Data File : VW018482.D
 Acq On : 29 Mar 2021 13:41
 Operator : SY/VA
 Sample : M1816-12
 Misc : 5.48G/10ML/MSVOA_W/SOIL
 ALS Vial : 11 Sample Multiplier: 1

Instrument :
 MSVOA_W
 ClientSampleId :
 BG3P0

Integration Parameters: LSCINT.P

Integrator: RTE
 Smoothing : OFF Filtering: 5
 Sampling : 1 Min Area: 0 % of largest Peak
 Start Thrs: 0.2 Max Peaks: 100
 Stop Thrs : 0 Peak Location: TOP

If leading or trailing edge < 100 prefer < Baseline drop else tangent >
 Peak separation: 5

Method : Z:\voasrv\HPCHEM1\MSVOA_W\Method\SOM2WLM031921S.M
 Title : VOC Analysis

37	10.579	1416	1423	1433	rBV	116101	202873	13.55%	1.730%
38	10.707	1438	1444	1449	rVB2	7621	13817	0.92%	0.118%
39	10.750	1449	1451	1452	rBV2	1139	992	0.07%	0.008%
40	10.805	1454	1460	1461	rBV6	2614	4909	0.33%	0.042%
41	10.927	1473	1480	1493	rVB	149204	258909	17.30%	2.208%
42	11.073	1501	1504	1507	rBV4	1607	2059	0.14%	0.018%
43	11.518	1573	1577	1581	rBV6	1997	4191	0.28%	0.036%
44	11.634	1588	1596	1606	rBV	792021	1383417	92.43%	11.797%
45	11.841	1625	1630	1634	rBV4	3291	5499	0.37%	0.047%
46	12.152	1680	1681	1682	rBV	1087	754	0.05%	0.006%
47	12.256	1693	1698	1701	rVB5	1048	1940	0.13%	0.017%
48	12.292	1702	1704	1709	rVB4	660	679	0.05%	0.006%
49	12.335	1709	1711	1712	rBV2	1165	788	0.05%	0.007%
50	12.408	1721	1723	1728	rBV5	788	1594	0.11%	0.014%
51	12.469	1728	1733	1737	rVV4	2104	3387	0.23%	0.029%
52	12.542	1740	1745	1748	rVV2	1253	1677	0.11%	0.014%
53	12.609	1748	1756	1763	rVB2	15251	27290	1.82%	0.233%
54	12.695	1763	1770	1777	rBV	261871	428820	28.65%	3.657%
55	12.890	1799	1802	1805	rBV4	906	1240	0.08%	0.011%
56	12.945	1806	1811	1814	rVB5	2653	3745	0.25%	0.032%
57	13.036	1822	1826	1827	rBV4	833	785	0.05%	0.007%
58	13.085	1832	1834	1837	rVV4	871	1266	0.08%	0.011%
59	13.115	1837	1839	1843	rVB4	1419	1691	0.11%	0.014%
60	13.188	1848	1851	1856	rVV6	2111	4050	0.27%	0.035%
61	13.249	1857	1861	1864	rVV3	1848	2977	0.20%	0.025%
62	13.274	1864	1865	1866	rVV	1164	647	0.04%	0.006%
63	13.292	1866	1868	1874	rVB3	2525	3410	0.23%	0.029%
64	13.402	1879	1886	1892	rBV6	4825	10419	0.70%	0.089%
65	13.499	1897	1902	1904	rBV3	2898	4361	0.29%	0.037%
66	13.554	1904	1911	1920	rBV	828487	1357566	90.71%	11.576%
67	13.713	1936	1937	1939	rBV	889	649	0.04%	0.006%
68	13.761	1939	1945	1948	rVV7	1900	3540	0.24%	0.030%
69	13.798	1948	1951	1952	rVV3	1170	1616	0.11%	0.014%
70	13.853	1952	1960	1973	rVB	651974	1059971	70.82%	9.039%
71	14.011	1983	1986	1987	rBV3	1360	1613	0.11%	0.014%
72	14.066	1990	1995	2004	rVB2	17883	32337	2.16%	0.276%
73	14.206	2015	2018	2022	rVB6	811	1032	0.07%	0.009%
74	14.328	2032	2038	2045	rVV5	11276	21166	1.41%	0.180%
75	14.493	2063	2065	2066	rBV2	1390	821	0.05%	0.007%
76	14.578	2077	2079	2084	rVB5	862	822	0.05%	0.007%

Data Path : Z:\voasrv\HPCHEM1\MSVOA_W\Data\VW032921\
 Data File : VW018482.D
 Acq On : 29 Mar 2021 13:41
 Operator : SY/VA
 Sample : M1816-12
 Misc : 5.48G/10ML/MSVOA_W/SOIL
 ALS Vial : 11 Sample Multiplier: 1

Instrument :
 MSVOA_W
 ClientSampleId :
 BG3P0

Integration Parameters: LSCINT.P

Integrator: RTE
 Smoothing : OFF Filtering: 5
 Sampling : 1 Min Area: 0 % of largest Peak
 Start Thrs: 0.2 Max Peaks: 100
 Stop Thrs : 0 Peak Location: TOP

If leading or trailing edge < 100 prefer < Baseline drop else tangent >
 Peak separation: 5

Method : Z:\voasrv\HPCHEM1\MSVOA_W\Method\SOM2WLM031921S.M
 Title : VOC Analysis

77	14.633	2085	2088	2089	rVV3	946	858	0.06%	0.007%
78	14.694	2096	2098	2099	rVV2	1580	1103	0.07%	0.009%
79	14.725	2099	2103	2106	rVB4	3756	4725	0.32%	0.040%
80	14.792	2106	2114	2117	rBV8	2134	4037	0.27%	0.034%
81	14.834	2117	2121	2123	rBV3	911	1223	0.08%	0.010%
82	14.981	2142	2145	2148	rVB4	1137	1291	0.09%	0.011%
83	15.011	2148	2150	2151	rBV2	669	698	0.05%	0.006%
84	15.054	2156	2157	2160	rBV2	1400	1524	0.10%	0.013%
85	15.176	2172	2177	2181	rBV5	4509	7276	0.49%	0.062%
86	15.249	2187	2189	2194	rVB6	2164	2110	0.14%	0.018%
87	15.310	2197	2199	2201	rBV3	797	712	0.05%	0.006%
88	15.365	2206	2208	2212	rVB3	1165	770	0.05%	0.007%
89	15.395	2212	2213	2218	rBV4	920	1156	0.08%	0.010%
90	15.438	2218	2220	2223	rBV4	1170	937	0.06%	0.008%
91	15.493	2223	2229	2234	rVB	7781	13179	0.88%	0.112%
92	15.548	2234	2238	2243	rVB7	3144	5661	0.38%	0.048%
93	15.590	2243	2245	2251	rBV5	994	1576	0.11%	0.013%
94	15.688	2256	2261	2264	rBV5	1554	2919	0.20%	0.025%
95	15.761	2270	2273	2274	rBV3	1317	1132	0.08%	0.010%
96	15.840	2282	2286	2291	rBV7	2305	4050	0.27%	0.035%
97	16.096	2324	2328	2332	rVB5	1430	2124	0.14%	0.018%
98	16.413	2378	2380	2382	rVB2	1122	806	0.05%	0.007%
99	16.432	2382	2383	2386	rBV2	1348	1700	0.11%	0.014%
100	16.487	2390	2392	2398	rVB7	5540	8387	0.56%	0.072%

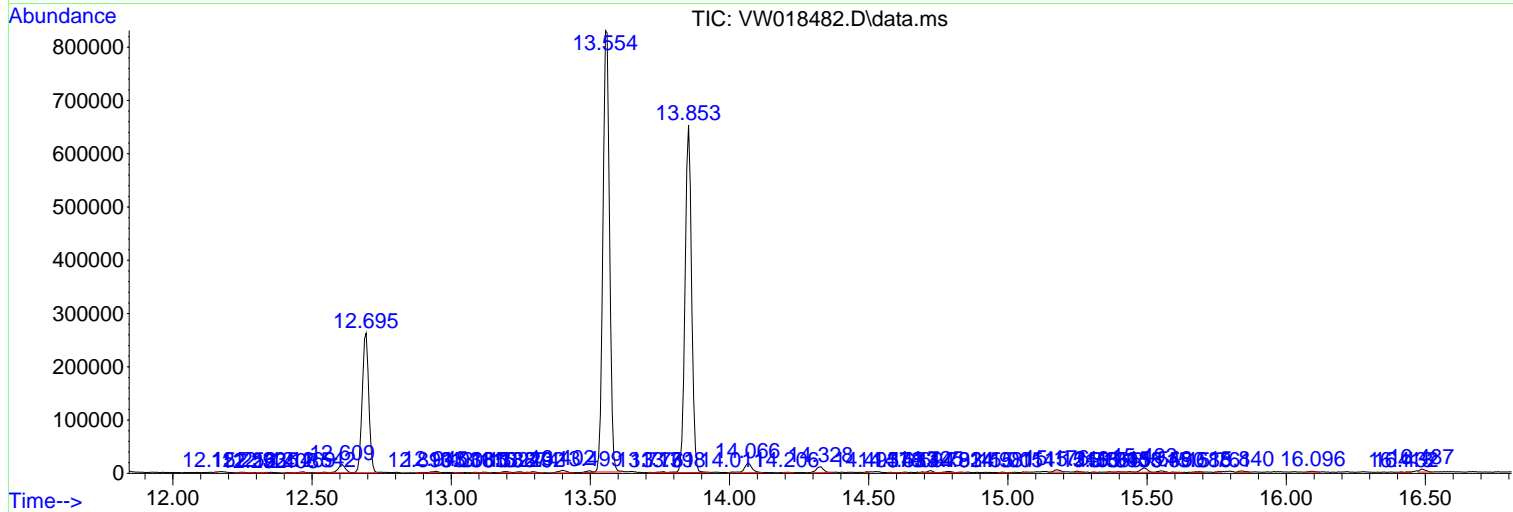
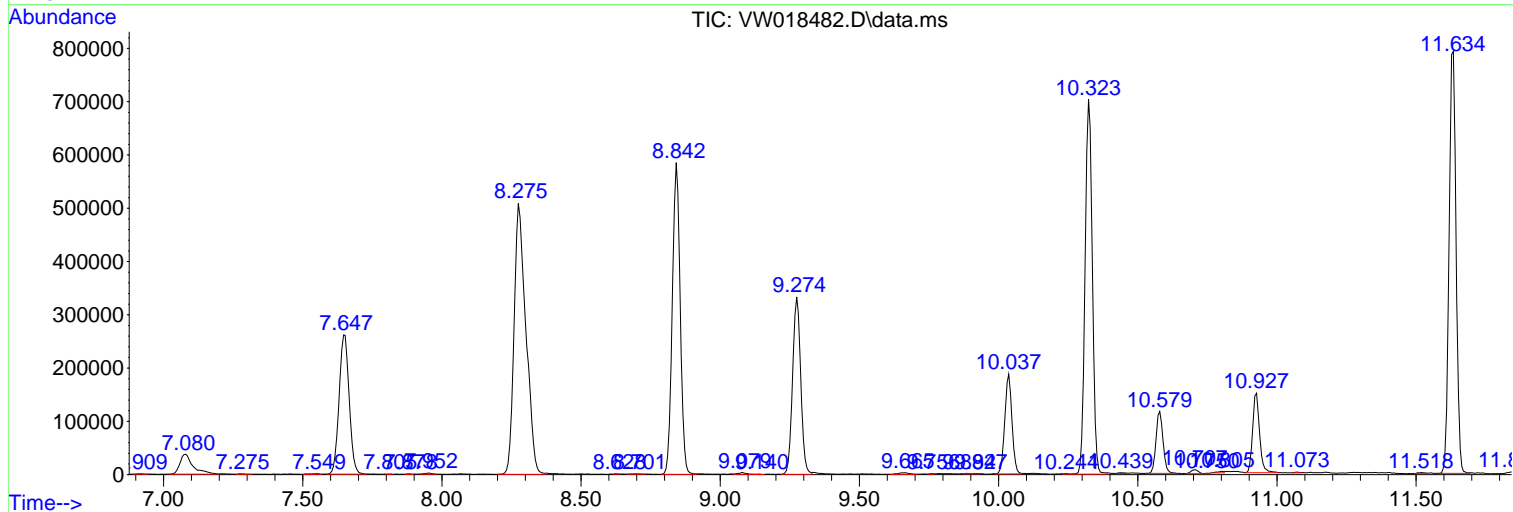
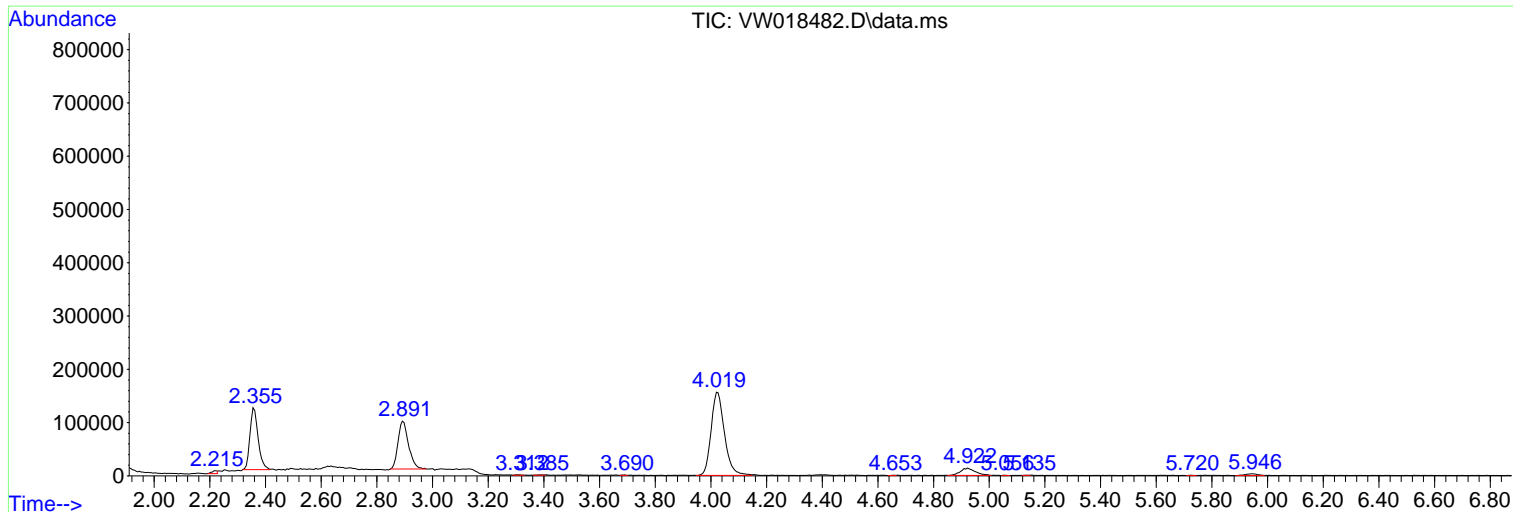
Sum of corrected areas: 11727256

Data Path : Z:\voasrv\HPCHEM1\MSVOA_W\Data\VW032921\
 Data File : VW018482.D
 Acq On : 29 Mar 2021 13:41
 Operator : SY/VA
 Sample : M1816-12
 Misc : 5.48G/10ML/MSVOA_W/SOIL
 ALS Vial : 11 Sample Multiplier: 1

Instrument :
 MSVOA_W
 ClientSampleId :
 BG3P0

Quant Method : Z:\voasrv\HPCHEM1\MSVOA_W\Method\SOM2WLM031921S.M
 Quant Title : VOC Analysis

TIC Library : C:\DATABASE\NIST11.L
 TIC Integration Parameters: LSCINT.P



Library Search Compound Report

Data Path : Z:\voasrv\HPCHEM1\MSVOA_W\Data\VW032921\
Data File : VW018482.D
Acq On : 29 Mar 2021 13:41
Operator : SY/VA
Sample : M1816-12
Misc : 5.48G/10ML/MSVOA_W/SOIL
ALS Vial : 11 Sample Multiplier: 1

Instrument :
MSVOA_W
ClientSampleId :
BG3P0

Quant Method : Z:\voasrv\HPCHEM1\MSVOA_W\Method\SOM2WLM031921S.M
Quant Title : VOC Analysis

TIC Library : C:\DATABASE\NIST11.L
TIC Integration Parameters: LSCINT.P

No Library Search Compounds Detected

Data Path : Z:\voasrv\HPCHEM1\MSVOA_W\Data\VW032921\
Data File : VW018482.D
Acq On : 29 Mar 2021 13:41
Operator : SY/VA
Sample : M1816-12
Misc : 5.48G/10ML/MSVOA_W/SOIL
ALS Vial : 11 Sample Multiplier: 1

Instrument :
MSVOA_W
ClientSampled :
BG3P0

Quant Method : Z:\voasrv\HPCHEM1\MSVOA_W\Method\SOM2WLM031921S.M
Quant Title : VOC Analysis

TIC Library : C:\DATABASE\NIST11.L
TIC Integration Parameters: LSCINT.P

TIC Top Hit name	RT	EstConc	Units	Response	--Internal Standard--		
					#	RT	Resp Conc
