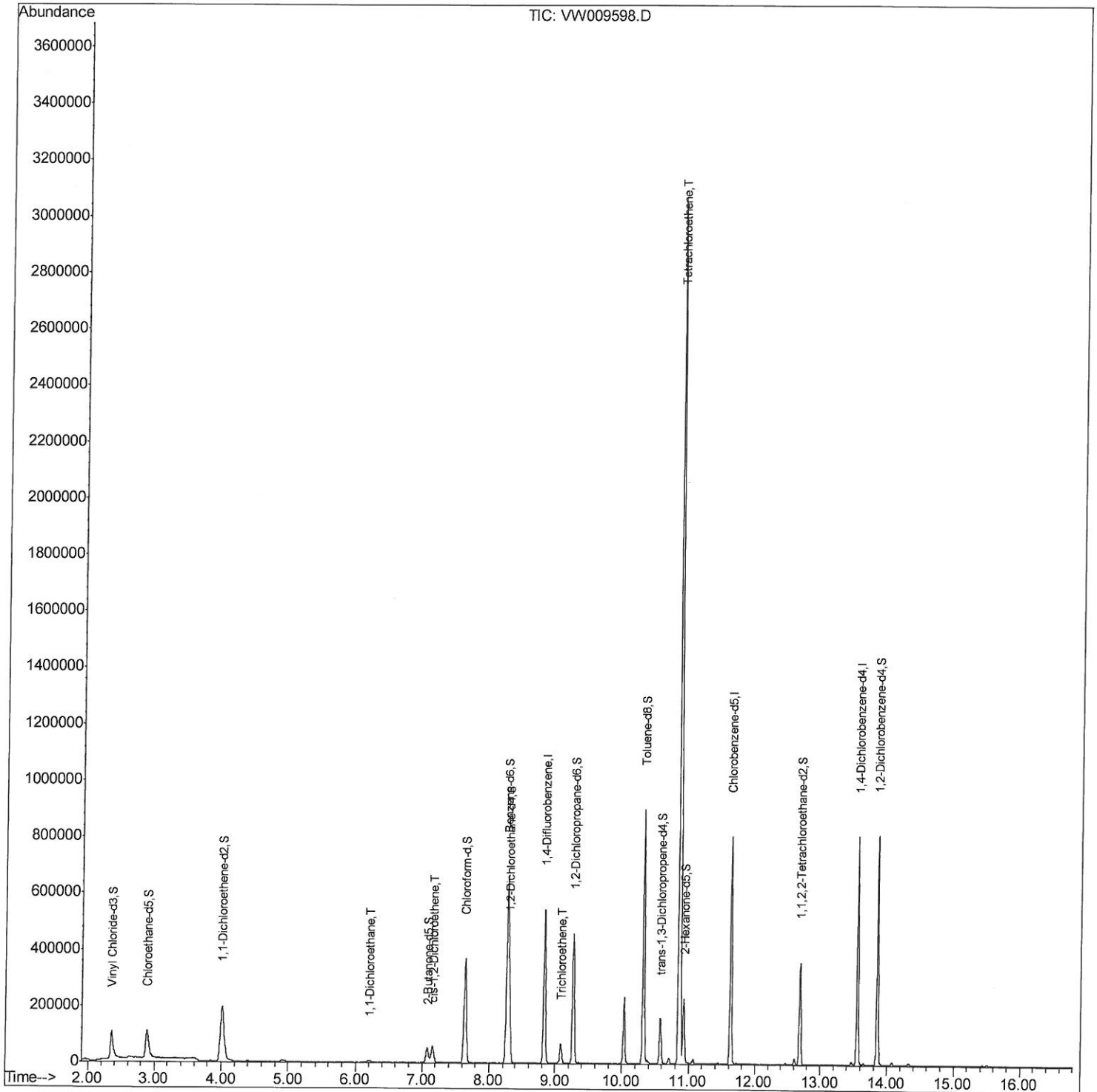


Quantitation Report (QT Reviewed)

Data Path : Z:\VOASRV\HPCHEM1\MSVOA_W\DATA\VW033019\
 Data File : VW009598.D
 Acq On : 30 Mar 2019 18:55
 Operator : SY/VA
 Sample : K2167-13
 Misc : 6.08G/10ML/MSVOA_W/SOIL
 ALS Vial : 1 Sample Multiplier: 1

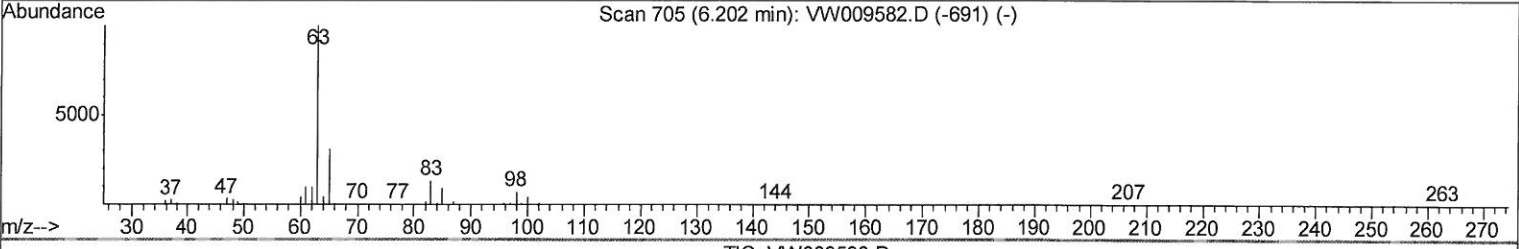
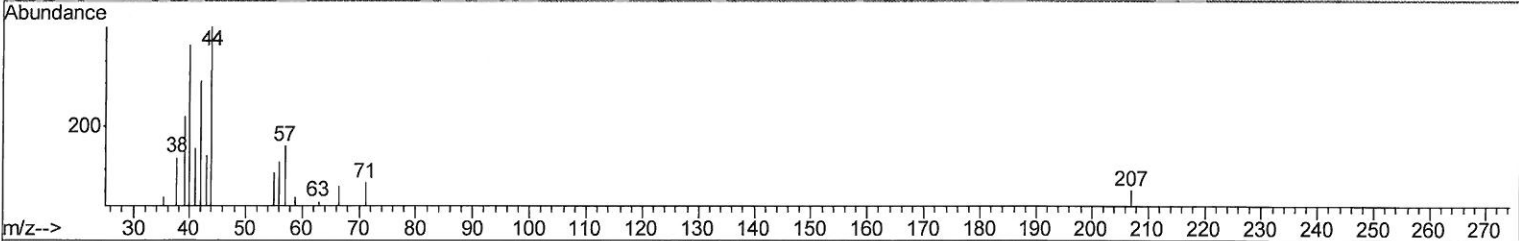
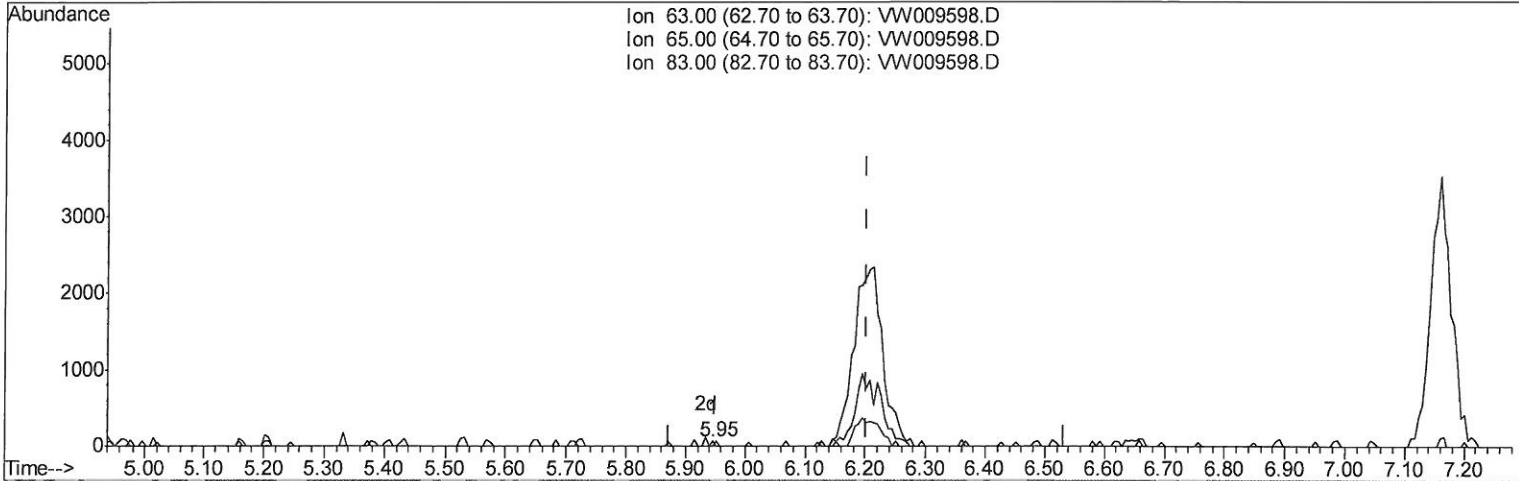
Quant Time: Mar 30 22:14:08 2019
 Quant Method : Z:\VOASRV\HPCHEM1\MSVOA_W\METHOD\SOM2WLM031419S.M
 Quant Title : VOC Analysis
 QLast Update : Sat Mar 30 21:16:55 2019
 Response via : Initial Calibration



Quantitation Report (Qedit)

Data Path : Z:\VOASRV\HPCHEM1\MSVOA_W\DATA\VW033019\
 Data File : VW009598.D
 Acq On : 30 Mar 2019 18:55
 Operator : SY/VA
 Sample : K2167-13
 Misc : 6.08G/10ML/MSVOA_W/SOIL
 ALS Vial : 1 Sample Multiplier: 1

Quant Time: Mar 30 21:21:13 2019
 Quant Method : Z:\VOASRV\HPCHEM1\MSVOA_W\METHOD\SOM2WLM031419S.M
 Quant Title : VOC Analysis
 QLast Update : Sat Mar 30 21:16:55 2019
 Response via : Initial Calibration



TIC: VW009598.D

(19) 1,1-Dichloroethane (T)

5.946min (-0.256) 0.00ug/L

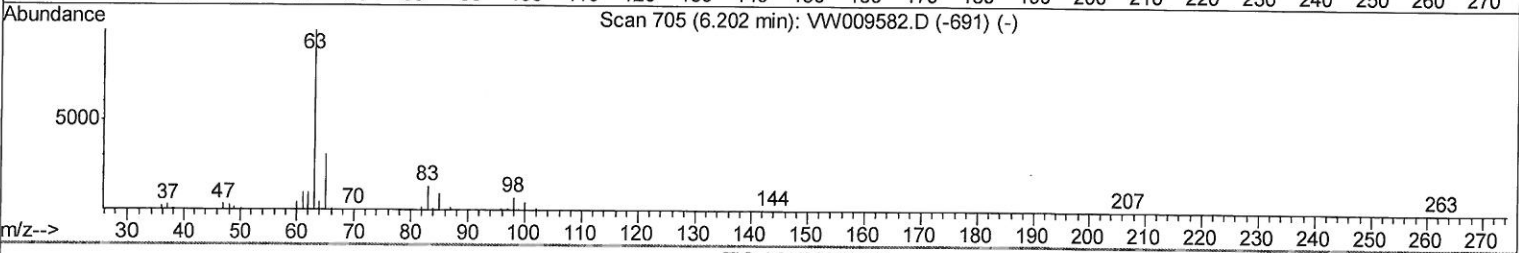
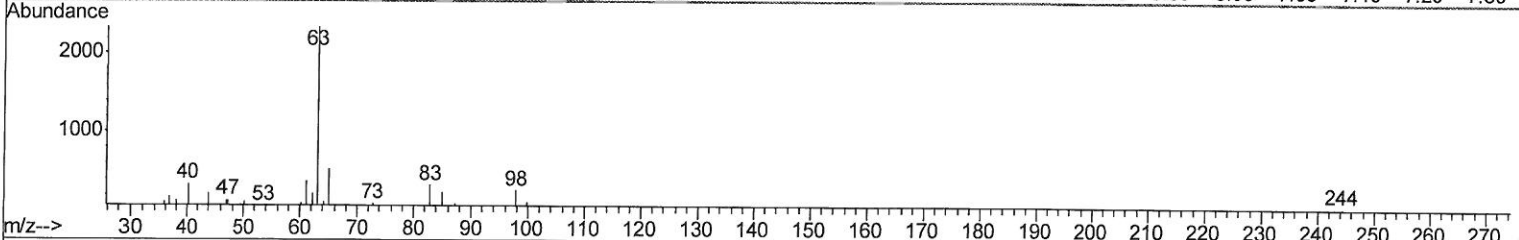
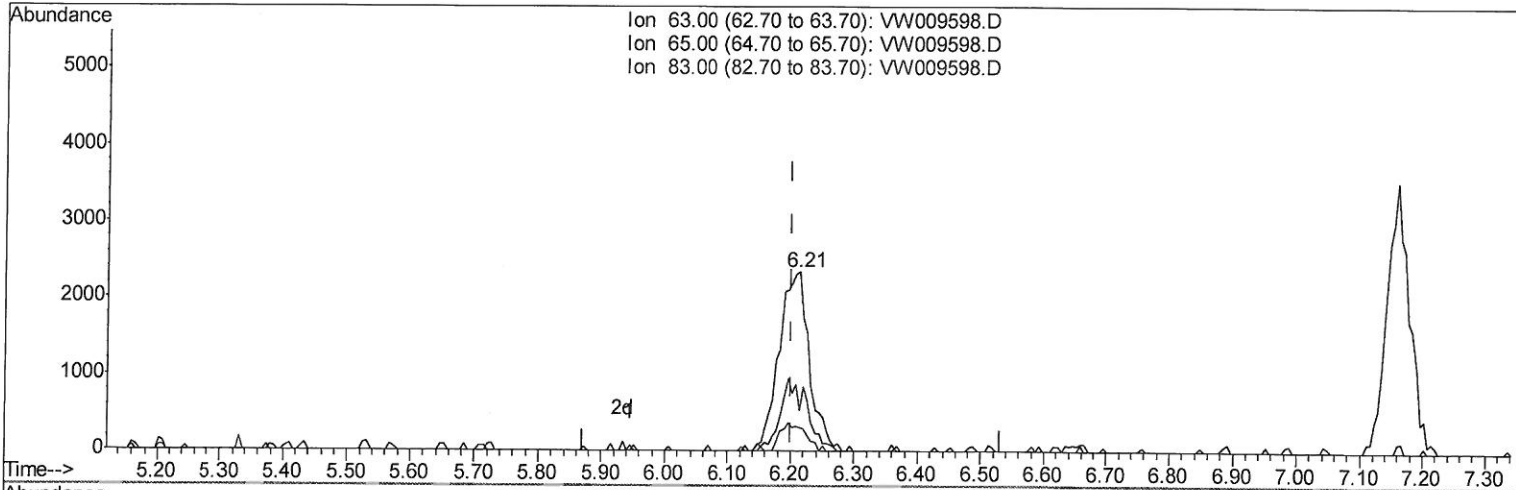
response 22

Ion	Exp%	Act%
63.00	100	100
65.00	30.80	0.00#
83.00	14.40	0.00#
0.00	0.00	0.00

Quantitation Report (Qedit)

Data Path : Z:\VOASRV\HPCHEM1\MSVOA_W\DATA\VW033019\
 Data File : VW009598.D
 Acq On : 30 Mar 2019 18:55
 Operator : SY/VA
 Sample : K2167-13
 Misc : 6.08G/10ML/MSVOA_W/SOIL
 ALS Vial : 1 Sample Multiplier: 1

Quant Time: Mar 30 21:21:13 2019
 Quant Method : Z:\VOASRV\HPCHEM1\MSVOA_W\METHOD\SOM2WLM031419S.M
 Quant Title : VOC Analysis
 QLast Update : Sat Mar 30 21:16:55 2019
 Response via : Initial Calibration



TIC: VW009598.D

(19) 1,1-Dichloroethane (T)

6.214min (+0.012) 0.76ug/L m

response 7814

7 MO
4/11/19

Ion	Exp%	Act%
63.00	100	100
65.00	30.80	22.71
83.00	14.40	13.41
0.00	0.00	0.00

Quantitation Report (QT Reviewed)

Data Path : Z:\VOASRV\HPCHEM1\MSVOA_W\DATA\VW033019\
 Data File : VW009598.D
 Acq On : 30 Mar 2019 18:55
 Operator : SY/VA
 Sample : K2167-13
 Misc : 6.08G/10ML/MSVOA_W/SOIL
 ALS Vial : 1 Sample Multiplier: 1

Quant Time: Mar 30 22:14:08 2019
 Quant Method : Z:\VOASRV\HPCHEM1\MSVOA_W\METHOD\SOM2WLM031419S.M
 Quant Title : VOC Analysis
 QLast Update : Sat Mar 30 21:16:55 2019
 Response via : Initial Calibration

Internal Standards	R.T.	QIon	Response	Conc	Units	Dev(Min)
1) 1,4-Difluorobenzene	8.84	114	433066	25.00	ug/L	0.00
28) Chlorobenzene-d5	11.63	117	416467	25.00	ug/L	0.00
60) 1,4-Dichlorobenzene-d4	13.56	152	184326	25.00	ug/L	0.00

System Monitoring Compounds

4) Vinyl Chloride-d3	2.35	65	166766	32.22	ug/L	0.00
Spiked Amount	25.000	Range 30 - 150	Recovery	=	128.88%	
7) Chloroethane-d5	2.89	69	152377	25.16	ug/L	0.00
Spiked Amount	25.000	Range 30 - 150	Recovery	=	100.64%	
10) 1,1-Dichloroethene-d2	4.01	63	249118	22.27	ug/L	0.00
Spiked Amount	25.000	Range 45 - 110	Recovery	=	89.08%	
20) 2-Butanone-d5	7.07	46	89201	41.68	ug/L	0.00
Spiked Amount	50.000	Range 20 - 135	Recovery	=	83.36%	
24) Chloroform-d	7.64	84	331555	28.05	ug/L	0.00
Spiked Amount	25.000	Range 40 - 150	Recovery	=	112.20%	
26) 1,2-Dichloroethane-d4	8.30	65	198080	27.82	ug/L	0.00
Spiked Amount	25.000	Range 70 - 130	Recovery	=	111.28%	
29) Benzene-d6	8.27	84	626922	27.30	ug/L	0.00
Spiked Amount	25.000	Range 20 - 135	Recovery	=	109.20%	
33) 1,2-Dichloropropane-d6	9.27	67	190496	27.61	ug/L	0.00
Spiked Amount	25.000	Range 70 - 120	Recovery	=	110.44%	
37) Toluene-d8	10.32	98	569079	26.80	ug/L	0.00
Spiked Amount	25.000	Range 30 - 130	Recovery	=	107.20%	
38) trans-1,3-Dichloropropene-	10.58	79	82780	23.89	ug/L	0.00
Spiked Amount	25.000	Range 30 - 135	Recovery	=	95.56%	
39) 2-Hexanone-d5	10.93	63	70431	42.15	ug/L	0.00
Spiked Amount	50.000	Range 20 - 135	Recovery	=	84.30%	
48) 1,1,2,2-Tetrachloroethane-	12.69	84	157186	23.14	ug/L	0.00
Spiked Amount	25.000	Range 45 - 120	Recovery	=	92.56%	
61) 1,2-Dichlorobenzene-d4	13.85	152	199717	28.26	ug/L	0.00
Spiked Amount	25.000	Range 75 - 120	Recovery	=	113.04%	

Target Compounds

19) 1,1-Dichloroethane	6.21	63	7814m	0.764	ug/L	Qvalue
22) cis-1,2-Dichloroethene	7.16	96	20062	3.303	ug/L	95
35) Trichloroethene	9.09	95	22185	3.652	ug/L	97
47) Tetrachloroethene	10.86	164	625428	121.863	ug/L	98

7MD
4/11/19

(#) = qualifier out of range (m) = manual integration (+) = signals summed