

Data Path : Z:\voasrv\HPCHEM1\MSVOA\_W\Data\VW033023\  
 Data File : VW025508.D  
 Acq On : 30 Mar 2023 17:24  
 Operator : SY/MD  
 Sample : 02130-13  
 Misc : 6.10g/10mL/MSVOA\_W/SOIL  
 ALS Vial : 1 Sample Multiplier: 1

Instrument :  
 MSVOA\_W  
 ClientSampleId :  
 C11A2

Integration Parameters: LSCINT.P

Integrator: RTE  
 Smoothing : OFF  
 Sampling : 1  
 Start Thrs: 0.2  
 Stop Thrs : 0

Filtering: 5  
 Min Area: 0 % of largest Peak  
 Max Peaks: 100  
 Peak Location: TOP

If leading or trailing edge < 100 prefer < Baseline drop else tangent >  
 Peak separation: 5

Method : Z:\voasrv\HPCHEM1\MSVOA\_W\Method\SFAMWLM030623SMA.M  
 Title : SFAM01.0

Signal : TIC: VW025508.D\data.ms

peak #	R.T. min	first scan	max scan	last scan	PK TY	peak height	corr. area	corr. % max.	% of total
1	2.363	72	78	89	rBV	127970	294653	8.48%	1.216%
2	2.893	159	165	179	rBV	106277	297800	8.57%	1.229%
3	3.393	239	247	258	rBV2	43626	109653	3.16%	0.453%
4	3.490	262	263	267	rBV4	2206	2832	0.08%	0.012%
5	3.545	267	272	274	rBV6	2593	3805	0.11%	0.016%
6	3.740	301	304	306	rBV4	2888	3188	0.09%	0.013%
7	3.808	310	315	316	rBV5	1541	2080	0.06%	0.009%
8	3.856	321	323	330	rVB7	3733	7627	0.22%	0.031%
9	3.917	330	333	337	rVB6	1507	2420	0.07%	0.010%
10	4.021	337	350	365	rBV	300014	969202	27.89%	4.000%
11	4.222	382	383	385	rBV2	2603	1745	0.05%	0.007%
12	4.307	395	397	402	rVB6	2981	4078	0.12%	0.017%
13	4.563	435	439	440	rBV4	1349	1715	0.05%	0.007%
14	4.691	456	460	462	rBV4	1740	2073	0.06%	0.009%
15	4.850	484	486	487	rBV2	2136	1838	0.05%	0.008%
16	4.917	488	497	515	rVV3	47507	192399	5.54%	0.794%
17	5.118	528	530	533	rVB4	1571	1847	0.05%	0.008%
18	5.167	533	538	539	rBV5	2750	3437	0.10%	0.014%
19	5.435	575	582	591	rBV3	8426	28363	0.82%	0.117%
20	5.636	613	615	620	rVB6	1252	1938	0.06%	0.008%
21	5.746	629	633	635	rBV5	2439	3249	0.09%	0.013%
22	5.941	654	665	676	rBV2	36183	113702	3.27%	0.469%
23	6.435	744	746	750	rVB5	2637	3459	0.10%	0.014%
24	6.478	750	753	755	rBV4	2469	2783	0.08%	0.011%
25	6.557	763	766	767	rBV3	1537	1828	0.05%	0.008%
26	6.624	775	777	781	rBV5	2065	2788	0.08%	0.012%
27	6.728	792	794	796	rVV3	2620	2206	0.06%	0.009%
28	6.844	810	813	815	rBV4	1372	1884	0.05%	0.008%
29	6.978	832	835	836	rVV2	2197	2849	0.08%	0.012%
30	6.996	836	838	841	rVB4	3505	3555	0.10%	0.015%
31	7.081	843	852	880	rVV2	95878	328601	9.46%	1.356%
32	7.441	908	911	916	rVB6	2133	2843	0.08%	0.012%
33	7.484	916	918	921	rVB4	1917	2152	0.06%	0.009%
34	7.648	935	945	957	rBV	587130	1438271	41.39%	5.936%
35	7.776	964	966	971	rVB6	2831	2713	0.08%	0.011%
36	7.923	983	990	997	rBV5	6824	16464	0.47%	0.068%

Data Path : Z:\voasrv\HPCHEM1\MSVOA\_W\Data\VW033023\  
 Data File : VW025508.D  
 Acq On : 30 Mar 2023 17:24  
 Operator : SY/MD  
 Sample : 02130-13  
 Misc : 6.10g/10mL/MSVOA\_W/SOIL  
 ALS Vial : 1 Sample Multiplier: 1

Instrument :  
 MSVOA\_W  
 ClientSampleId :  
 C11A2

Integration Parameters: LSCINT.P

Integrator: RTE  
 Smoothing : OFF  
 Sampling : 1  
 Start Thrs: 0.2  
 Stop Thrs : 0

Filtering: 5  
 Min Area: 0 % of largest Peak  
 Max Peaks: 100  
 Peak Location: TOP

If leading or trailing edge < 100 prefer < Baseline drop else tangent >  
 Peak separation: 5

Method : Z:\voasrv\HPCHEM1\MSVOA\_W\Method\SFAMWLM030623SMA.M  
 Title : SFAM01.0

37	8.026	1006	1007	1015	rVB8	4098	7287	0.21%	0.030%
38	8.154	1020	1028	1035	rBV4	13775	32019	0.92%	0.132%
39	8.276	1035	1048	1064	rBV2	1193552	3474917	100.00%	14.341%
40	8.496	1081	1084	1085	rBV3	1391	1728	0.05%	0.007%
41	8.575	1094	1097	1099	rBV4	2917	3216	0.09%	0.013%
42	8.697	1108	1117	1126	rVB	22872	49837	1.43%	0.206%
43	8.843	1131	1141	1152	rBV	1156306	2318514	66.72%	9.568%
44	8.971	1161	1162	1165	rBV3	1824	2258	0.06%	0.009%
45	9.014	1168	1169	1173	rBV4	1668	1826	0.05%	0.008%
46	9.093	1173	1182	1192	rVB4	14548	37367	1.08%	0.154%
47	9.276	1203	1212	1227	rBV	827097	1686426	48.53%	6.960%
48	9.502	1246	1249	1251	rBV4	3032	3779	0.11%	0.016%
49	9.563	1257	1259	1262	rVB4	1654	2042	0.06%	0.008%
50	9.660	1272	1275	1277	rBV4	2454	3186	0.09%	0.013%
51	9.886	1303	1312	1319	rBV6	9629	21471	0.62%	0.089%
52	9.953	1319	1323	1324	rBV4	4794	4932	0.14%	0.020%
53	10.032	1327	1336	1344	rBV	414045	750278	21.59%	3.096%
54	10.215	1364	1366	1369	rBV4	1296	1792	0.05%	0.007%
55	10.245	1369	1371	1375	rVB5	3879	4667	0.13%	0.019%
56	10.325	1375	1384	1391	rBV	1566132	2784974	80.15%	11.493%
57	10.501	1409	1413	1418	rBV2	13233	21376	0.62%	0.088%
58	10.575	1418	1425	1439	rVV	255943	449136	12.93%	1.854%
59	10.697	1440	1445	1453	rVB2	16124	31614	0.91%	0.130%
60	10.861	1462	1472	1477	rBV	189444	329946	9.50%	1.362%
61	10.922	1477	1482	1497	rVB	338110	587093	16.90%	2.423%
62	11.062	1502	1505	1511	rVB7	8113	15207	0.44%	0.063%
63	11.172	1520	1523	1526	rBV5	2527	4355	0.13%	0.018%
64	11.282	1537	1541	1543	rBV5	2001	2910	0.08%	0.012%
65	11.331	1547	1549	1552	rVB4	1506	1716	0.05%	0.007%
66	11.404	1558	1561	1562	rBV3	2927	2997	0.09%	0.012%
67	11.513	1573	1579	1583	rBV7	4812	11124	0.32%	0.046%
68	11.629	1587	1598	1607	rBV	1505182	2508279	72.18%	10.351%
69	11.727	1611	1614	1619	rVB5	5066	9491	0.27%	0.039%
70	11.769	1619	1621	1624	rVB4	2026	2008	0.06%	0.008%
71	11.837	1628	1632	1635	rBV6	5683	8677	0.25%	0.036%
72	12.099	1673	1675	1677	rBV2	3226	2495	0.07%	0.010%
73	12.141	1681	1682	1683	rVV	3433	2283	0.07%	0.009%
74	12.166	1684	1686	1691	rVV6	4527	6961	0.20%	0.029%
75	12.233	1695	1697	1700	rVB4	2296	2904	0.08%	0.012%
76	12.343	1712	1715	1717	rBV4	2057	2653	0.08%	0.011%

Data Path : Z:\voasrv\HPCHEM1\MSVOA\_W\Data\VW033023\  
 Data File : VW025508.D  
 Acq On : 30 Mar 2023 17:24  
 Operator : SY/MD  
 Sample : 02130-13  
 Misc : 6.10g/10mL/MSVOA\_W/SOIL  
 ALS Vial : 1 Sample Multiplier: 1

Instrument :  
 MSVOA\_W  
 ClientSampleId :  
 C11A2

Integration Parameters: LSCINT.P

Integrator: RTE  
 Smoothing : OFF Filtering: 5  
 Sampling : 1 Min Area: 0 % of largest Peak  
 Start Thrs: 0.2 Max Peaks: 100  
 Stop Thrs : 0 Peak Location: TOP

If leading or trailing edge < 100 prefer < Baseline drop else tangent >  
 Peak separation: 5

Method : Z:\voasrv\HPCHEM1\MSVOA\_W\Method\SFAMWLM030623SMA.M  
 Title : SFAM01.0

77	12.452	1730	1733	1734	rBV3	3061	2648	0.08%	0.011%
78	12.599	1751	1757	1764	rBV3	26400	49885	1.44%	0.206%
79	12.690	1764	1772	1778	rBV	576416	926174	26.65%	3.822%
80	12.861	1798	1800	1802	rBV3	1748	2003	0.06%	0.008%
81	12.885	1802	1804	1808	rBV5	4260	5487	0.16%	0.023%
82	13.074	1832	1835	1836	rBV3	2141	1865	0.05%	0.008%
83	13.117	1837	1842	1847	rBV5	10171	16529	0.48%	0.068%
84	13.190	1850	1854	1857	rBV5	2982	6358	0.18%	0.026%
85	13.397	1884	1888	1893	rVV8	7587	12189	0.35%	0.050%
86	13.470	1895	1900	1903	rVV7	5619	10015	0.29%	0.041%
87	13.556	1907	1914	1924	rVV	1177039	1923660	55.36%	7.939%
88	13.647	1924	1929	1936	rVB	41387	70099	2.02%	0.289%
89	13.848	1955	1962	1971	rBV	1113263	1770229	50.94%	7.306%
90	14.062	1992	1997	2001	rBV2	29448	46739	1.35%	0.193%
91	14.415	2050	2055	2059	rBV2	21784	35780	1.03%	0.148%
92	15.318	2199	2203	2208	rBV7	8207	14223	0.41%	0.059%
93	15.427	2217	2221	2226	rVV	25590	36705	1.06%	0.151%
94	15.482	2226	2230	2235	rVB	19818	33221	0.96%	0.137%
95	15.543	2235	2240	2247	rVB2	22395	37706	1.09%	0.156%
96	15.647	2255	2257	2261	rBV5	3435	4780	0.14%	0.020%
97	16.122	2333	2335	2341	rVB6	8139	12562	0.36%	0.052%
98	16.208	2347	2349	2355	rVB6	5188	6920	0.20%	0.029%
99	16.275	2355	2360	2369	rVB3	20917	42134	1.21%	0.174%
100	16.482	2388	2394	2400	rBV2	54591	105677	3.04%	0.436%

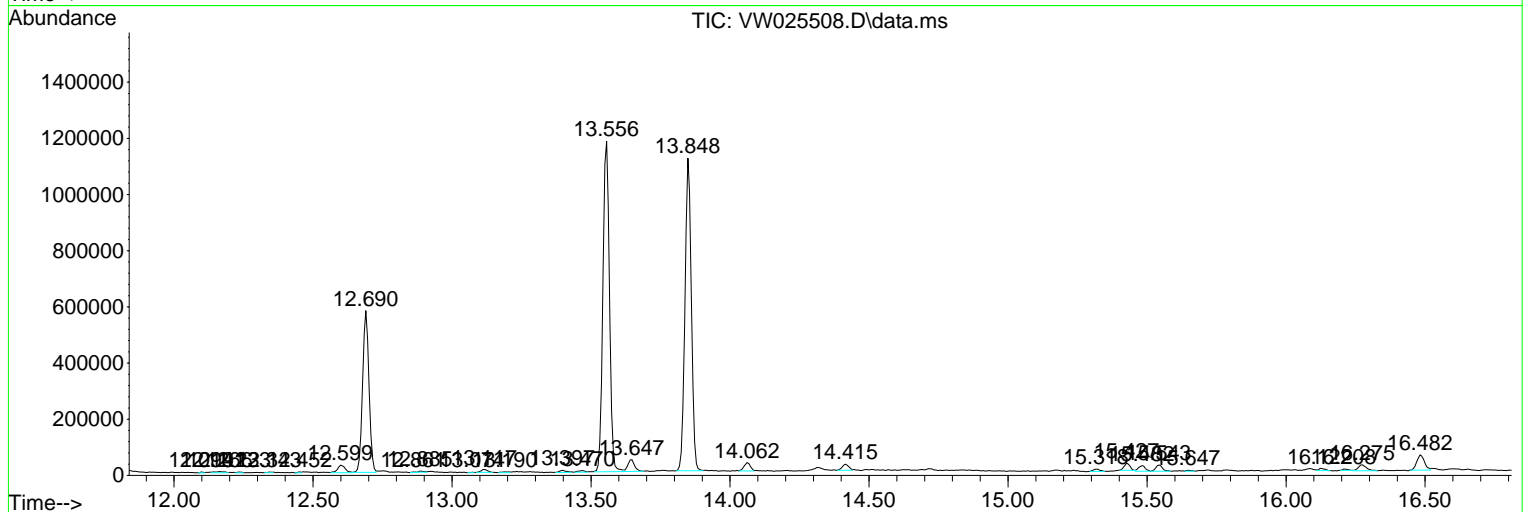
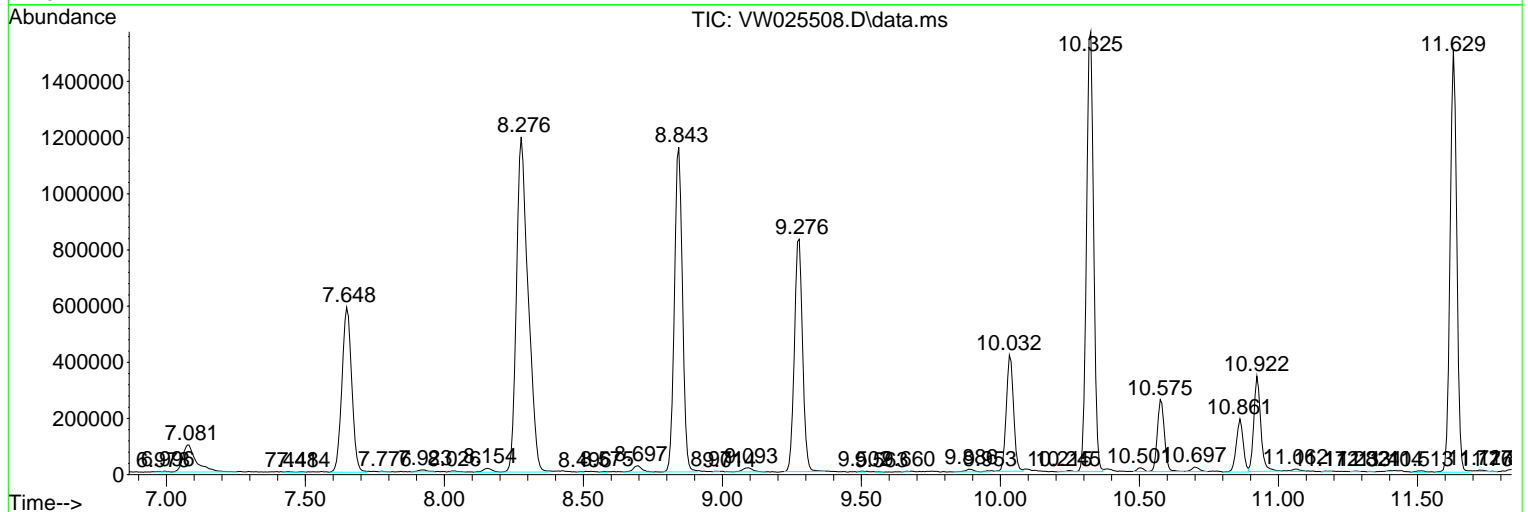
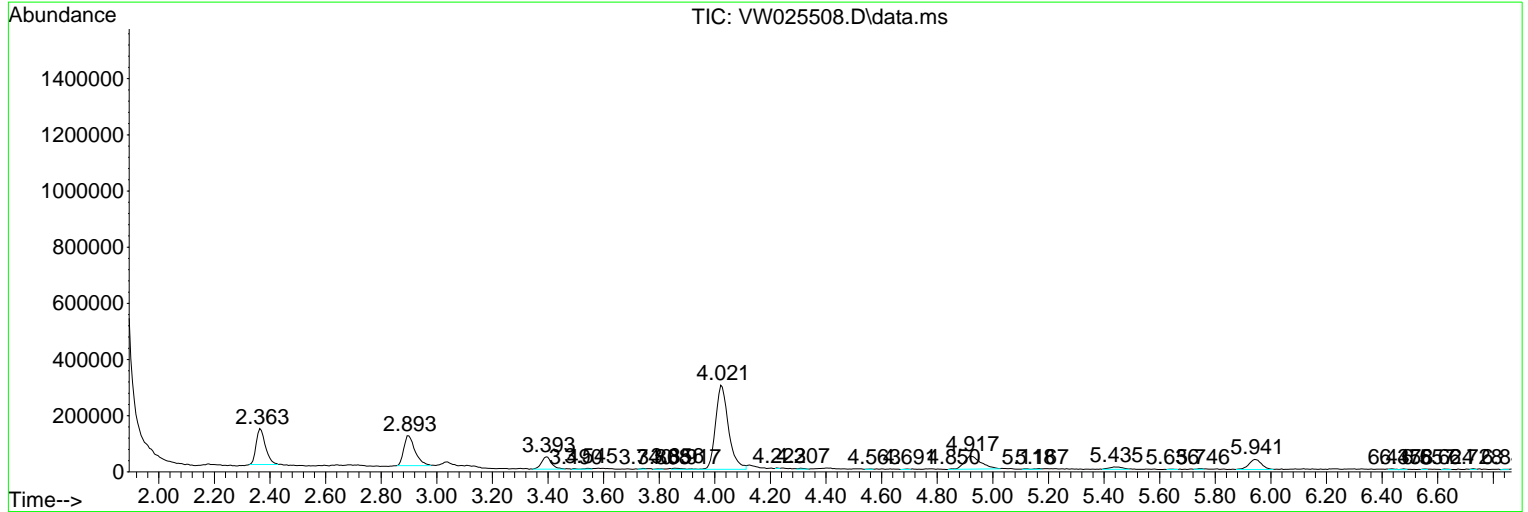
Sum of corrected areas: 24231369

Data Path : Z:\voasrv\HPCHEM1\MSVOA\_W\Data\VW033023\  
 Data File : VW025508.D  
 Acq On : 30 Mar 2023 17:24  
 Operator : SY/MD  
 Sample : 02130-13  
 Misc : 6.10g/10mL/MSVOA\_W/SOIL  
 ALS Vial : 1 Sample Multiplier: 1

Instrument :  
 MSVOA\_W  
 ClientSampleId :  
 C11A2

Quant Method : Z:\voasrv\HPCHEM1\MSVOA\_W\Method\SFAMWLM030623SMA.M  
 Quant Title : SFAM01.0

TIC Library : C:\Database\NIST20.L  
 TIC Integration Parameters: LSCINT.P



Data Path : Z:\voasrv\HPCHEM1\MSVOA\_W\Data\VW033023\  
 Data File : VW025508.D  
 Acq On : 30 Mar 2023 17:24  
 Operator : SY/MD  
 Sample : 02130-13  
 Misc : 6.10g/10mL/MSVOA\_W/SOIL  
 ALS Vial : 1 Sample Multiplier: 1

Instrument :  
 MSVOA\_W  
 ClientSampleId :  
 C11A2

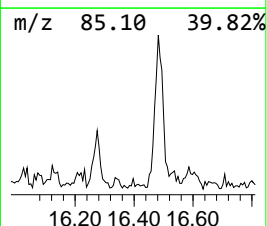
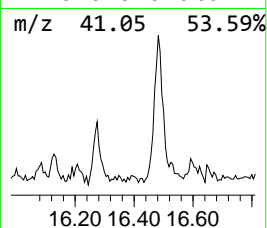
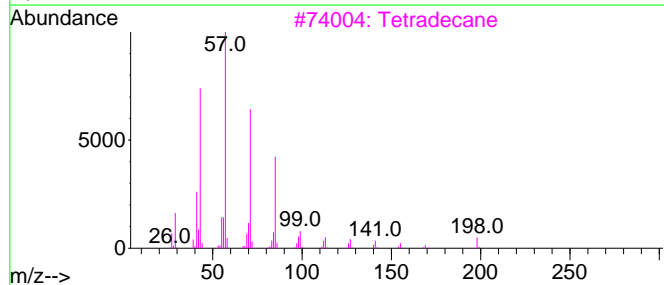
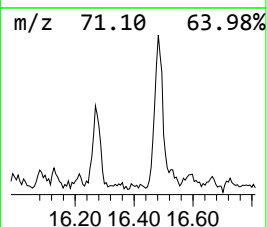
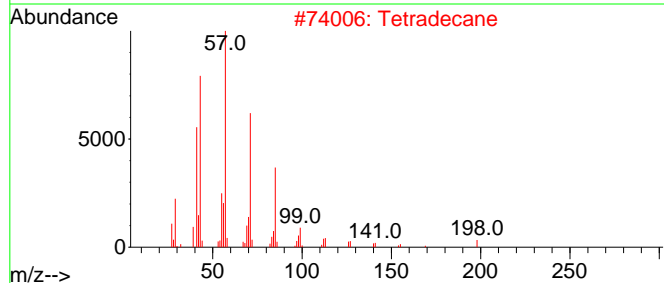
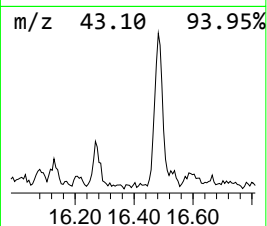
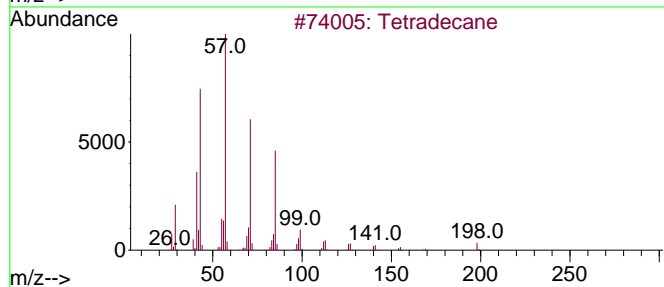
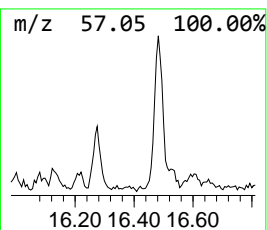
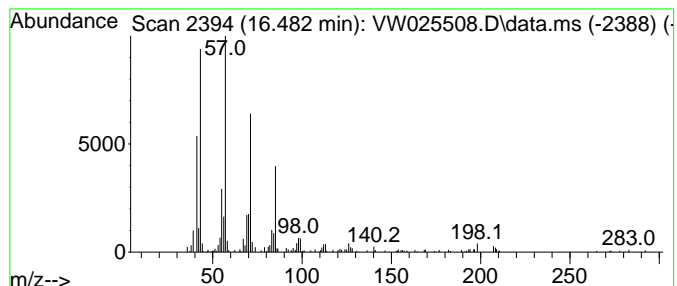
Quant Method : Z:\voasrv\HPCHEM1\MSVOA\_W\Method\SFAMWLM030623SMA.M  
 Quant Title : SFAM01.0

TIC Library : C:\Database\NIST20.L  
 TIC Integration Parameters: LSCINT.P

\*\*\*\*\*  
 Peak Number 2 (DEL) Alkane: Straight-Chai... Concentration Rank 2

R.T.	EstConc	Area	Relative to ISTD	R.T.
16.482	1.37 ug/L	105677	1,4-Dichlorobenzene-d4	13.556

Hit#	of 5	Tentative ID	MW	MolForm	CAS#	Qual
1		Tetradecane	198	C14H30	000629-59-4	91
2		Tetradecane	198	C14H30	000629-59-4	87
3		Tetradecane	198	C14H30	000629-59-4	81
4		Hexadecane	226	C16H34	000544-76-3	80
5		Sulfurous acid, hexyl octyl ester	278	C14H30O3S	1000309-13-0	72



Data Path : Z:\voasrv\HPCHEM1\MSVOA\_W\Data\VW033023\  
Data File : VW025508.D  
Acq On : 30 Mar 2023 17:24  
Operator : SY/MD  
Sample : 02130-13  
Misc : 6.10g/10mL/MSVOA\_W/SOIL  
ALS Vial : 1 Sample Multiplier: 1

Instrument :  
MSVOA\_W  
ClientSampleId :  
C11A2

Quant Method : Z:\voasrv\HPCHEM1\MSVOA\_W\Method\SFAMWLM030623SMA.M  
Quant Title : SFAM01.0

TIC Library : C:\Database\NIST0.L  
TIC Integration Parameters: LSCINT.P

TIC Top Hit name	RT	EstConc	Units	Response	--Internal Standard--			
					#	RT	Resp	Conc
(DEL) Alkane: S...	16.482	1.4	ug/L	105677	3	13.556	1923660	25.0