

Data Path : Z:\voasrv\HPCHEM1\MSVOA\_W\Data\VW033123\  
 Data File : VW025539.D  
 Acq On : 31 Mar 2023 17:49  
 Operator : SY/MD  
 Sample : VIBLK437  
 Misc : 5.00g/10mL/MSVOA\_W/SOIL  
 ALS Vial : 1 Sample Multiplier: 1

**Instrument :**  
 MSVOA\_W  
**ClientSampleId :**  
 VIBLK437

Quant Time: Apr 01 00:40:43 2023  
 Quant Method : Z:\voasrv\HPCHEM1\MSVOA\_W\Method\SFAMWLM030623SMA.M  
 Quant Title : SFAM01.0  
 QLast Update : Sat Apr 01 00:35:04 2023  
 Response via : Initial Calibration

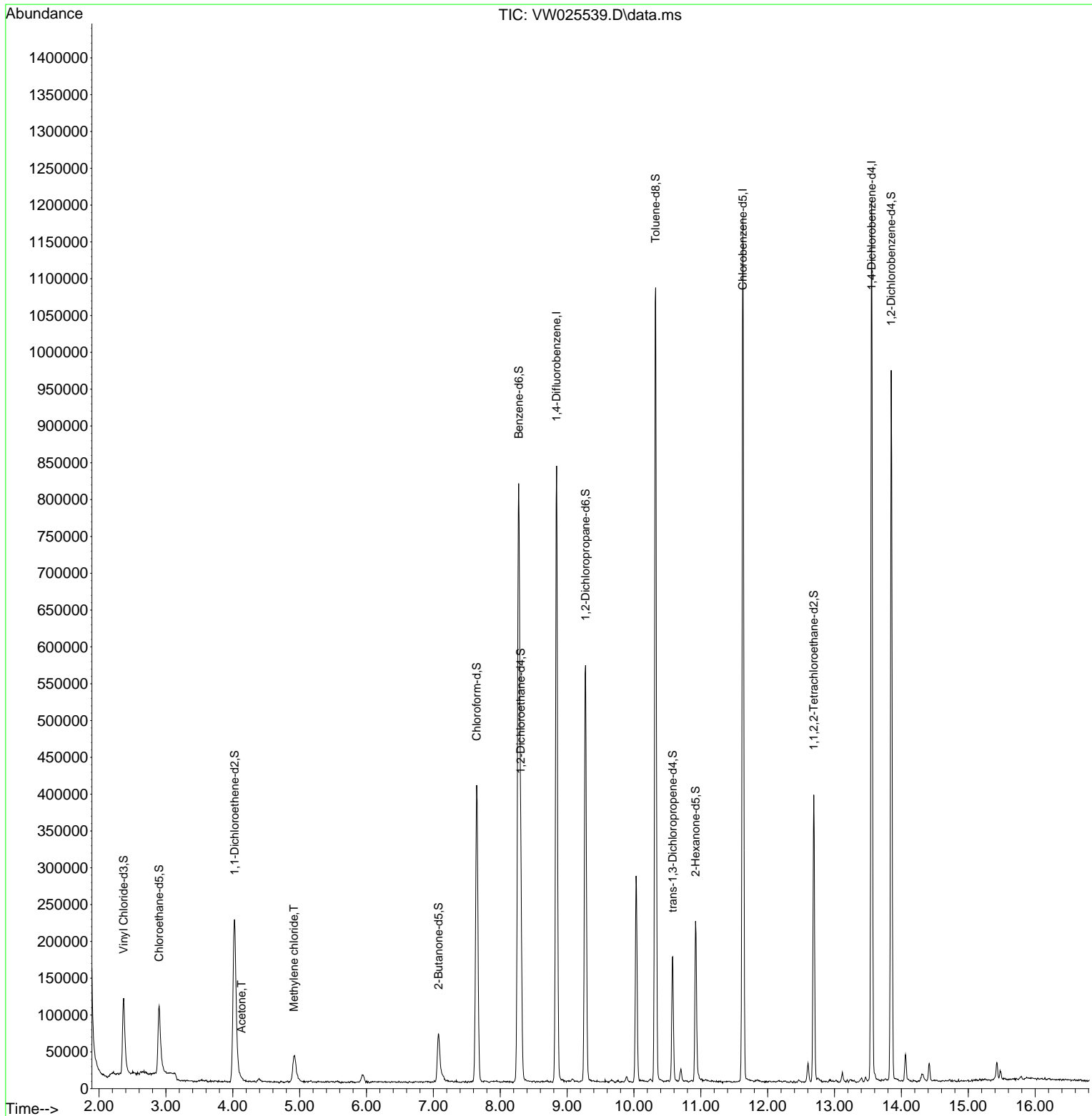
Compound	R.T.	QIon	Response	Conc	Units	Dev(Min)
Internal Standards						
1) 1,4-Difluorobenzene	8.843	114	667122	25.000	ug/L	0.00
28) Chlorobenzene-d5	11.629	117	607529	25.000	ug/L	0.00
58) 1,4-Dichlorobenzene-d4	13.556	152	294358	25.000	ug/L	0.00
System Monitoring Compounds						
4) Vinyl Chloride-d3	2.369	65	169831	15.311	ug/L	0.00
Spiked Amount	25.000	Range 30 - 150	Recovery =	61.240%		
7) Chloroethane-d5	2.899	69	139522	17.481	ug/L	0.00
Spiked Amount	25.000	Range 30 - 150	Recovery =	69.920%		
11) 1,1-Dichloroethene-d2	4.027	63	284976	13.302	ug/L	0.00
Spiked Amount	25.000	Range 45 - 110	Recovery =	53.200%		
21) 2-Butanone-d5	7.075	46	120504	44.259	ug/L	0.00
Spiked Amount	50.000	Range 20 - 135	Recovery =	88.520%		
24) Chloroform-d	7.648	84	404651	21.040	ug/L	0.00
Spiked Amount	25.000	Range 40 - 150	Recovery =	84.160%		
26) 1,2-Dichloroethane-d4	8.307	65	223427	21.644	ug/L	0.00
Spiked Amount	25.000	Range 70 - 130	Recovery =	86.560%		
32) Benzene-d6	8.276	84	818056	19.707	ug/L	0.00
Spiked Amount	25.000	Range 20 - 135	Recovery =	78.840%		
36) 1,2-Dichloropropane-d6	9.276	67	267033	20.793	ug/L	0.00
Spiked Amount	25.000	Range 70 - 120	Recovery =	83.160%		
41) Toluene-d8	10.325	98	698113	19.074	ug/L	0.00
Spiked Amount	25.000	Range 30 - 130	Recovery =	76.280%		
43) trans-1,3-Dichloroprop...	10.581	79	94021	18.386	ug/L	0.00
Spiked Amount	25.000	Range 30 - 135	Recovery =	73.560%		
47) 2-Hexanone-d5	10.922	63	73591	39.851	ug/L	0.00
Spiked Amount	50.000	Range 20 - 135	Recovery =	79.700%		
56) 1,1,2,2-Tetrachloroeth...	12.690	84	198910	21.141	ug/L	0.00
Spiked Amount	25.000	Range 45 - 120	Recovery =	84.560%		
66) 1,2-Dichlorobenzene-d4	13.848	152	233291	21.312	ug/L	0.00
Spiked Amount	25.000	Range 75 - 120	Recovery =	85.240%		
Target Compounds						
13) Acetone	4.131	43	7177	2.742	ug/L	97
16) Methylene chloride	4.917	84	31148	3.353	ug/L	95

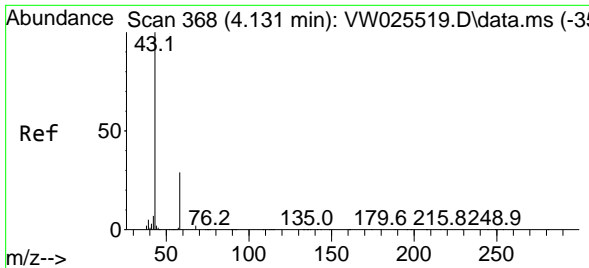
(#) = qualifier out of range (m) = manual integration (+) = signals summed

Data Path : Z:\voasrv\HPCHEM1\MSVOA\_W\Data\VW033123\  
 Data File : VW025539.D  
 Acq On : 31 Mar 2023 17:49  
 Operator : SY/MD  
 Sample : VIBLK437  
 Misc : 5.00g/10mL/MSVOA\_W/SOIL  
 ALS Vial : 1 Sample Multiplier: 1

Instrument :  
 MSVOA\_W  
 ClientSampleId :  
 VIBLK437

Quant Time: Apr 01 00:40:43 2023  
 Quant Method : Z:\voasrv\HPCHEM1\MSVOA\_W\Method\SFAMWLM030623SMA.M  
 Quant Title : SFAM01.0  
 QLast Update : Sat Apr 01 00:35:04 2023  
 Response via : Initial Calibration

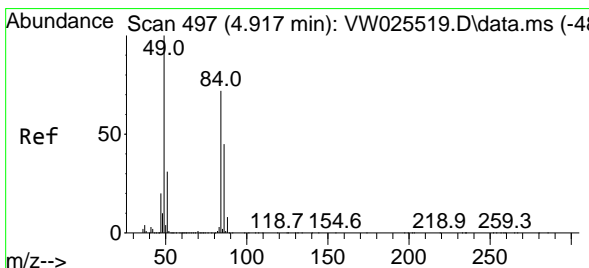
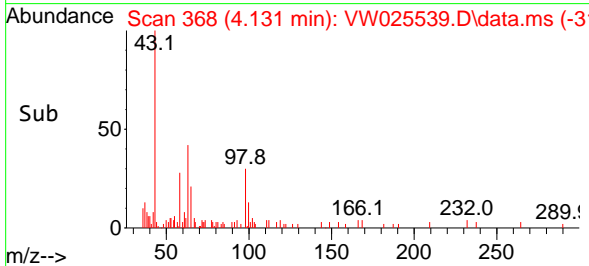
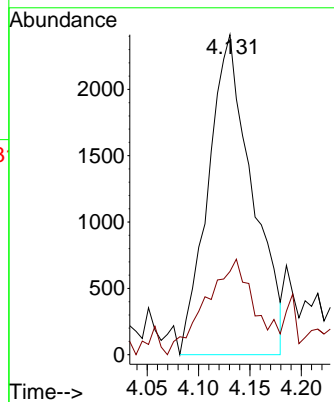
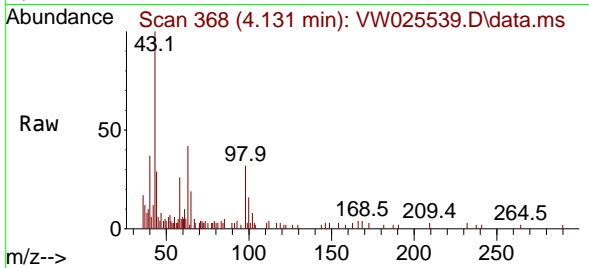




#13  
 Acetone  
 Concen: 2.742 ug/L  
 RT: 4.131 min Scan# 368  
 Delta R.T. -0.000 min  
 Lab File: VW025539.D  
 Acq: 31 Mar 2023 17:49

Instrument : MSVOA\_W  
 Client Sample Id : VIBLK437

Tgt Ion: 43 Resp: 7177  
 Ion Ratio Lower Upper  
 43 100  
 58 28.3 0.0 60.0



#16  
 Methylene chloride  
 Concen: 3.353 ug/L  
 RT: 4.917 min Scan# 497  
 Delta R.T. -0.000 min  
 Lab File: VW025539.D  
 Acq: 31 Mar 2023 17:49

Tgt Ion: 84 Resp: 31148  
 Ion Ratio Lower Upper  
 84 100  
 86 58.2 45.1 83.7  
 49 139.8 94.7 175.9

