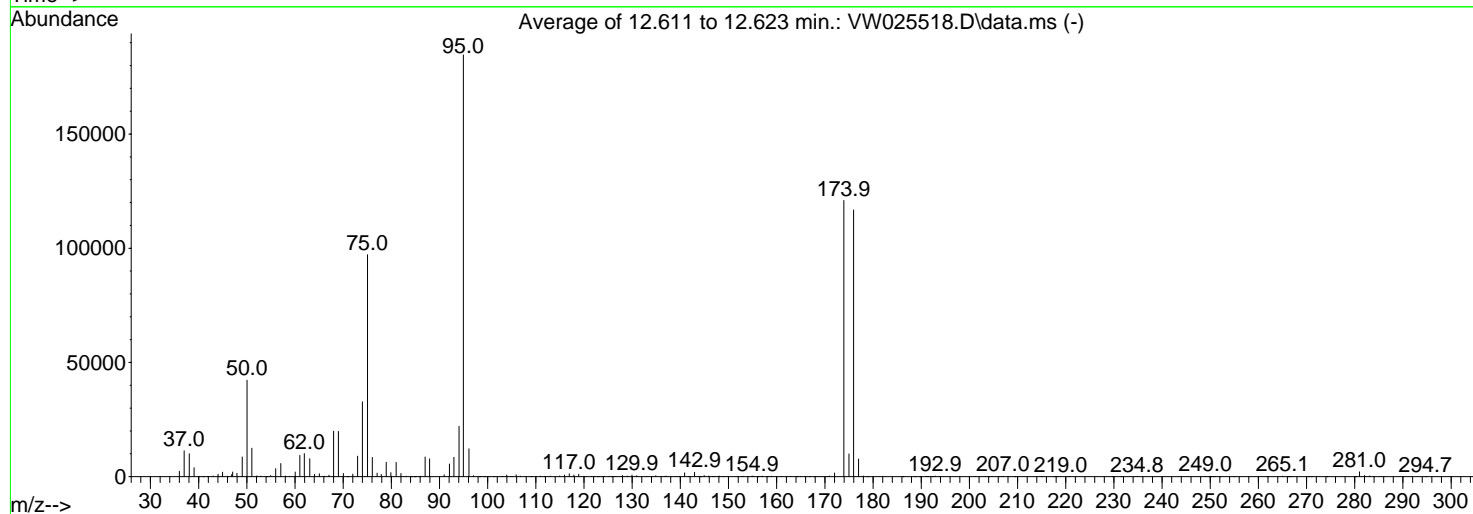
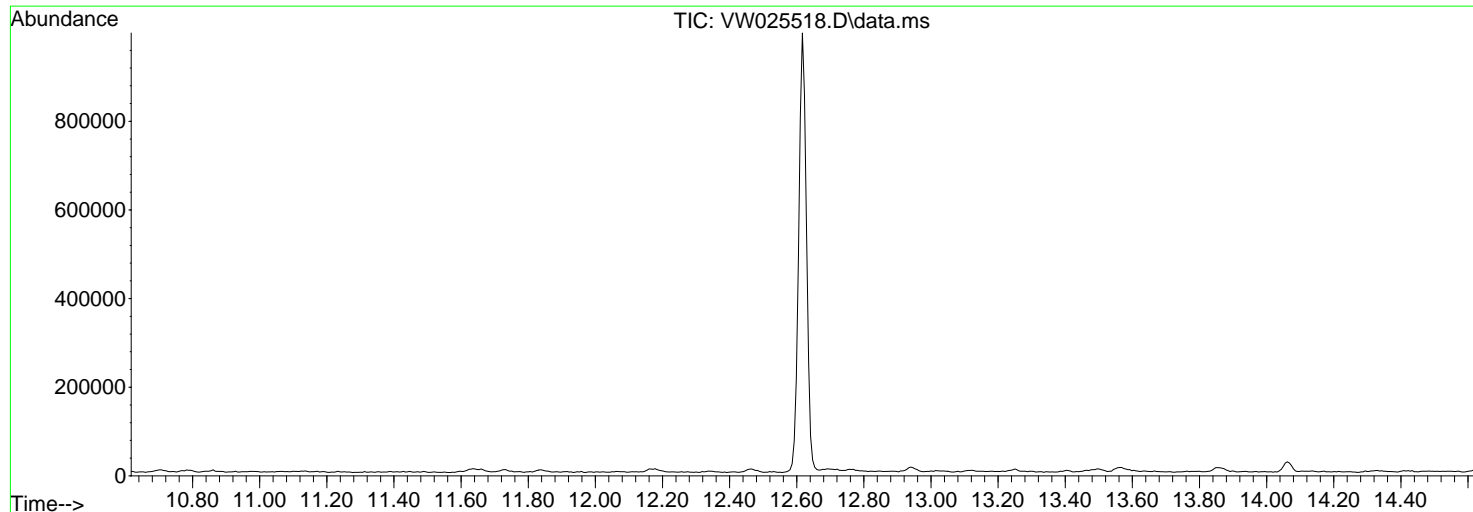


Data Path : Z:\voasrv\HPCHEM1\MSVOA_W\Data\VW033123\
 Data File : VW025518.D
 Acq On : 31 Mar 2023 08:39
 Operator : SY/MD
 Sample : BFB495
 Misc : 5.00g/10mL/MSVOA_W/SOIL
 ALS Vial : 1 Sample Multiplier: 1

Instrument :
 MSVOA_W
 ClientSampleId :
 BFB495

Integration File: rteint.p

Method : Z:\voasrv\HPCHEM1\MSVOA_U\Method\SFAMWLM030623SMA.M
 Title : TRACE VOA SFAM1.0
 Last Update : Sat Mar 25 00:39:08 2023



AutoFind: Scans 1759, 1760, 1761; Background Corrected with Scan 1749

Target Mass	Rel. to Mass	Lower Limit%	Upper Limit%	Rel. Abn%	Raw Abn	Result
50	95	15	40	22.9	42235	PASS
75	95	30	80	52.6	97151	PASS
95	95	100	100	100.0	184684	PASS
96	95	5	9	6.6	12215	PASS
173	174	0.00	2	0.0	0	PASS
174	95	50	120	65.5	120941	PASS
175	174	5	9	8.2	9969	PASS
176	174	95	101	96.6	116771	PASS
177	176	5	9	6.6	7741	PASS

m/z	Abundance
35.30	149.0
35.70	141.0
36.30	80.0
37.00	123.0
37.60	129.0
38.20	94.0
39.10	197.0
40.00	643.0
41.00	158.0
42.20	120.0
43.30	246.0
44.10	522.0
44.90	108.0
45.30	78.0
46.70	114.0
47.40	86.0
49.40	76.0
50.80	82.0
51.20	51.0
52.00	79.0
52.30	82.0
52.90	70.0
53.50	133.0
55.10	184.0
56.00	94.0
56.80	70.0
57.40	174.0
59.30	78.0
60.30	106.0
60.90	69.0
61.50	53.0
61.90	52.0
62.50	112.0
65.20	77.0
66.80	68.0
67.40	110.0
68.30	85.0
68.70	62.0
69.30	122.0
70.20	142.0
70.90	63.0
71.50	79.0
72.90	64.0
74.30	132.0
75.20	94.0
75.90	56.0
76.30	51.0
77.40	61.0
79.30	61.0
79.80	77.0
81.20	81.0
83.80	103.0
85.90	58.0
89.20	60.0
90.20	75.0
93.30	94.0
94.20	60.0
94.90	105.0
96.10	74.0
97.90	104.0
102.10	88.0
110.00	76.0
113.20	54.0
125.30	67.0
127.30	54.0
128.20	56.0
133.00	79.0
135.90	94.0
141.80	73.0
146.00	56.0
153.40	79.0
154.20	65.0
155.80	70.0
157.90	52.0
170.00	82.0
183.30	92.0
196.60	55.0
207.00	53.0
210.50	50.0
276.50	66.0
287.40	60.0
289.60	64.0

Instrument :
MSVOA_W
ClientSampleId :
BFB495

m/z	Abundance
36.00	2076.0
37.00	11302.0
38.10	9560.0
39.10	4088.0
40.00	818.0
40.90	191.0
41.90	88.0
43.10	213.0
44.00	1643.0
45.00	1975.0
46.90	3155.0
48.00	1545.0
49.00	8960.0
50.00	42576.0
51.00	12222.0
52.10	474.0
53.10	222.0
54.00	194.0
54.90	708.0
56.10	3458.0
57.00	5256.0
58.00	274.0
59.30	209.0
60.00	1892.0
61.10	9239.0
62.00	9687.0
63.00	7627.0
64.00	1043.0
65.00	1573.0
66.00	227.0
67.10	728.0
68.00	17920.0
69.00	18944.0
70.00	1480.0
70.90	107.0
71.90	904.0
73.00	8829.0
74.00	30448.0
75.00	91584.0
76.10	8118.0
77.10	1483.0
78.00	818.0
79.00	6319.0
80.00	1767.0
81.00	6485.0
82.00	1182.0
83.10	250.0
84.00	70.0
84.80	81.0
86.10	292.0
87.00	7779.0
88.00	7273.0
89.10	116.0
90.90	855.0
92.10	4955.0
93.00	7518.0
94.00	19576.0
95.00	166400.0
96.10	11364.0
97.10	457.0
97.90	113.0
100.40	63.0
101.20	94.0
102.30	88.0
103.20	160.0
103.90	741.0
104.90	232.0
105.90	751.0
106.90	203.0
108.90	91.0
109.40	64.0
110.00	178.0
111.00	200.0
111.70	153.0
112.00	160.0
113.10	200.0
114.90	255.0
116.00	796.0
117.00	1079.0
117.90	708.0
118.90	783.0
120.10	73.0
121.60	56.0
122.10	105.0
123.20	96.0
124.20	97.0
125.10	286.0
125.70	185.0
126.60	80.0
127.80	543.0
128.90	242.0
130.00	500.0

Instrument :
MSVOA_W
ClientSampleId :
BFB495

131.10	287.0
133.00	328.0
134.10	106.0
134.90	419.0
136.70	252.0
137.00	252.0
138.20	62.0
140.00	205.0
140.90	1260.0
141.90	257.0
143.00	1784.0
143.80	162.0
145.00	572.0
145.90	330.0
146.60	163.0
147.10	220.0
148.10	421.0
148.80	142.0
149.80	187.0
151.90	113.0
152.80	185.0
153.50	75.0
154.00	82.0
154.90	468.0
156.80	330.0
157.90	102.0
158.80	170.0
161.10	152.0
162.10	78.0
162.90	101.0
164.20	55.0
165.00	115.0
167.80	97.0
168.50	84.0
169.10	63.0
169.80	164.0
170.60	283.0
172.00	1381.0
174.00	93176.0
175.00	9084.0
176.00	104352.0
177.00	7257.0
178.00	254.0
178.80	88.0
179.20	99.0
186.20	91.0
191.00	224.0
192.30	52.0
192.90	457.0
194.00	62.0
201.20	71.0
203.40	69.0
204.70	75.0
206.00	62.0
207.00	410.0
208.00	112.0
209.40	67.0
218.10	52.0
229.70	53.0
234.80	69.0
249.00	229.0
250.60	60.0
251.00	60.0
252.00	71.0
265.10	273.0
266.00	83.0
266.40	65.0
266.90	135.0
270.40	75.0
271.00	95.0
274.20	52.0
281.00	3230.0
282.00	1002.0
283.10	494.0
283.90	198.0
285.50	79.0
294.70	59.0

Instrument :
MSVOA_W
ClientSampleId :
BFB495

m/z	Abundance
35.10	171.0
36.00	2589.0
37.00	12477.0
38.00	11283.0
39.00	4487.0
40.00	444.0
41.00	221.0
41.90	153.0
42.90	402.0
44.00	1841.0
45.00	2683.0
46.10	367.0
47.10	3250.0
47.90	1384.0
49.10	9125.0
50.10	46944.0
51.10	14143.0
52.10	694.0
52.90	462.0
54.20	94.0
54.90	757.0
56.10	4363.0
57.10	6564.0
58.00	327.0
58.90	238.0
60.10	2279.0
61.00	10236.0
62.00	10662.0
63.00	8567.0
64.00	1172.0
65.10	1356.0
66.00	123.0
66.90	588.0
68.00	22848.0
69.00	22240.0
70.10	1675.0
70.90	102.0
72.00	1268.0
73.10	9993.0
74.00	37064.0
75.10	108824.0
76.10	9400.0
77.00	1641.0
77.90	1035.0
78.90	6763.0
80.00	2154.0
81.00	6766.0
82.00	1588.0
83.10	199.0
84.20	61.0
86.10	416.0
87.00	10322.0
88.00	8686.0
91.00	821.0
92.00	6716.0
93.00	9294.0
94.10	25232.0
95.00	209984.0
96.10	13728.0
97.00	371.0
98.30	53.0
98.80	68.0
99.30	66.0
100.40	127.0
102.80	161.0
104.00	760.0
105.10	292.0
105.90	910.0
106.70	274.0
107.80	89.0
109.30	84.0
110.00	184.0
111.00	223.0
111.80	258.0
112.90	232.0
114.90	219.0
116.00	755.0
117.00	1478.0
117.90	751.0
118.90	1181.0
120.10	77.0
121.50	69.0
122.20	96.0
123.00	90.0
123.70	129.0
124.10	105.0
125.10	149.0
125.70	137.0
126.60	140.0
128.00	926.0
129.00	340.0
130.00	776.0

Instrument :
MSVOA_W
ClientSampleId :
BFB495

m/z	Abundance
36.00	2458.0
37.00	10617.0
38.10	9514.0
39.10	3855.0
39.90	690.0
40.80	171.0
41.90	192.0
42.40	93.0
43.10	268.0
44.10	1222.0
45.00	1601.0
45.90	257.0
46.30	256.0
47.00	2957.0
48.00	1530.0
49.00	7682.0
50.00	37184.0
51.10	11260.0
52.10	394.0
53.00	228.0
54.00	118.0
55.00	607.0
56.00	2937.0
57.00	5318.0
58.10	340.0
58.90	194.0
60.00	1916.0
61.00	8741.0
62.00	10009.0
63.10	7373.0
64.10	829.0
65.00	1057.0
66.10	342.0
67.10	633.0
68.00	18840.0
69.00	18336.0
70.00	1450.0
71.10	229.0
72.10	1161.0
73.00	8374.0
74.00	30904.0
75.00	91328.0
76.00	8119.0
77.00	1475.0
77.80	1014.0
78.90	5758.0
79.90	1661.0
81.00	5802.0
82.00	1406.0
83.00	224.0
84.00	98.0
85.00	75.0
85.80	274.0
87.00	7864.0
87.90	7284.0
91.00	793.0
92.00	4994.0
93.00	8627.0
94.00	21704.0
95.00	177984.0
96.10	11776.0
97.00	451.0
98.30	54.0
98.80	122.0
103.00	219.0
103.90	644.0
104.80	254.0
105.90	806.0
106.90	211.0
107.90	90.0
109.20	50.0
110.00	120.0
110.90	156.0
111.80	128.0
112.90	153.0
115.00	326.0
115.90	594.0
116.90	1172.0
117.90	683.0
118.90	1286.0
120.20	179.0
121.60	84.0
122.10	122.0
122.80	74.0
123.20	105.0
123.90	117.0
125.60	129.0
125.90	114.0
126.50	56.0
128.00	784.0
128.90	231.0
129.90	781.0

Instrument :
MSVOA_W
ClientSampleId :
BFB495

130.80	300.0
131.10	239.0
132.00	77.0
132.80	72.0
134.00	281.0
135.00	278.0
137.10	297.0
137.90	124.0
139.10	150.0
139.70	128.0
140.90	1885.0
141.90	280.0
142.90	1840.0
143.90	154.0
145.00	388.0
145.90	290.0
146.80	153.0
147.80	406.0
149.10	118.0
150.00	198.0
151.80	159.0
153.00	123.0
154.00	156.0
155.10	343.0
155.70	131.0
156.10	114.0
157.00	274.0
157.80	111.0
158.30	80.0
159.00	305.0
161.00	215.0
165.90	55.0
169.10	99.0
169.70	101.0
171.00	354.0
172.10	1712.0
173.90	130000.0
175.00	10565.0
175.90	114760.0
177.00	7672.0
178.10	298.0
188.70	51.0
191.30	79.0
192.80	230.0
203.50	90.0
206.70	140.0
215.00	59.0
217.60	74.0
219.00	66.0
231.50	68.0
234.80	51.0
248.90	99.0
249.70	92.0
261.80	50.0
264.90	134.0
266.20	65.0
267.10	83.0
280.20	50.0
281.00	1213.0
282.00	404.0
283.20	203.0

Instrument :
MSVOA_W
ClientSampleId :
BFB495

130.90	505.0
132.00	149.0
133.00	279.0
133.90	120.0
134.90	526.0
136.20	187.0
137.00	200.0
138.00	96.0
139.00	71.0
140.90	1913.0
141.80	222.0
142.90	2085.0
143.70	133.0
144.20	79.0
144.80	506.0
145.90	323.0
147.00	168.0
148.00	467.0
149.20	190.0
149.90	143.0
151.80	225.0
153.00	235.0
154.10	147.0
154.90	371.0
157.10	303.0
158.40	134.0
158.90	170.0
161.00	172.0
162.20	79.0
162.90	103.0
164.90	102.0
166.80	75.0
168.50	106.0
169.20	87.0
169.80	195.0
170.90	444.0
171.90	1749.0
174.00	139648.0
175.00	10258.0
176.00	131200.0
177.00	8294.0
177.90	272.0
179.10	112.0
189.70	59.0
191.00	198.0
192.90	267.0
193.80	94.0
201.30	51.0
203.20	76.0
203.50	65.0
204.00	61.0
204.70	78.0
207.10	207.0
208.10	75.0
219.00	58.0
220.60	60.0
234.90	124.0
249.00	202.0
250.10	98.0
251.10	83.0
254.90	51.0
265.10	202.0
266.10	95.0
266.90	82.0
267.20	94.0
281.00	1985.0
282.20	535.0
283.00	300.0
283.90	139.0
285.50	67.0
294.70	55.0

Instrument :
MSVOA_W
ClientSampleId :
BFB495