

Data Path : Z:\voasrv\HPCHEM1\MSVOA_W\Data\VW040121\
 Data File : VW018512.D
 Acq On : 31 Mar 2021 14:59
 Operator : SY/VA
 Sample : M1859-05
 Misc : 5.05G/10ML/MSVOA_W/SOIL
 ALS Vial : 4 Sample Multiplier: 1

Instrument :
 MSVOA_W
 ClientSampleId :
 BG544

Integration Parameters: LSCINT.P
 Integrator: RTE
 Smoothing : OFF
 Sampling : 1
 Start Thrs : 0.2
 Stop Thrs : 0
 Filtering: 5
 Min Area: 0 % of largest Peak
 Max Peaks: 100
 Peak Location: TOP

If leading or trailing edge < 100 prefer < Baseline drop else tangent >
 Peak separation: 5

Method : Z:\voasrv\HPCHEM1\MSVOA_W\Method\SOM2WLM031921S.M
 Title : VOC Analysis

Signal : TIC: VW018512.D\data.ms

peak #	R.T. min	first scan	max scan	last scan	PK TY	peak height	corr. area	corr. % max.	% of total
1	2.361	69	75	86	rVB	166868	330788	18.00%	2.358%
2	2.891	156	162	177	rVB	124345	303131	16.50%	2.161%
3	3.312	229	231	234	rVB4	953	760	0.04%	0.005%
4	3.470	255	257	258	rBV2	511	408	0.02%	0.003%
5	3.690	285	293	298	rBV5	859	2365	0.13%	0.017%
6	3.830	311	316	317	rBV3	541	519	0.03%	0.004%
7	4.019	336	347	363	rBV	215683	653672	35.57%	4.659%
8	4.812	476	477	478	rBV	644	342	0.02%	0.002%
9	4.921	483	495	512	rBV2	21305	77207	4.20%	0.550%
10	5.123	526	528	530	rVV2	479	332	0.02%	0.002%
11	5.159	532	534	537	rBV2	530	444	0.02%	0.003%
12	5.336	561	563	564	rVV2	450	335	0.02%	0.002%
13	5.372	567	569	570	rBV	483	400	0.02%	0.003%
14	5.415	573	576	578	rVV3	798	1003	0.05%	0.007%
15	5.440	578	580	583	rVV4	827	1038	0.06%	0.007%
16	5.519	587	593	595	rBV3	741	1132	0.06%	0.008%
17	5.616	607	609	612	rVB3	879	1063	0.06%	0.008%
18	5.641	612	613	615	rBV	496	415	0.02%	0.003%
19	5.732	625	628	629	rBV2	651	702	0.04%	0.005%
20	5.757	629	632	633	rBV2	752	666	0.04%	0.005%
21	5.885	649	653	654	rBV2	699	890	0.05%	0.006%
22	5.939	654	662	672	rVV4	8676	26910	1.46%	0.192%
23	6.110	688	690	692	rBV2	604	528	0.03%	0.004%
24	6.141	693	695	696	rVV2	720	404	0.02%	0.003%
25	6.159	696	698	699	rVV2	466	456	0.02%	0.003%
26	6.177	699	701	706	rVV3	928	1141	0.06%	0.008%
27	6.220	706	708	713	rVV5	478	637	0.03%	0.005%
28	6.281	716	718	719	rVV	732	563	0.03%	0.004%
29	6.317	722	724	728	rVB5	414	452	0.02%	0.003%
30	6.348	728	729	734	rVB3	392	376	0.02%	0.003%
31	6.409	735	739	743	rVB3	560	837	0.05%	0.006%
32	6.567	763	765	767	rBV3	654	529	0.03%	0.004%
33	6.762	793	797	799	rBV2	450	533	0.03%	0.004%
34	6.830	806	808	810	rVB	518	381	0.02%	0.003%
35	6.854	810	812	813	rBV	746	525	0.03%	0.004%
36	6.903	813	820	829	rBV4	4070	11604	0.63%	0.083%

Data Path : Z:\voasrv\HPCHEM1\MSVOA_W\Data\VW040121\
 Data File : VW018512.D
 Acq On : 31 Mar 2021 14:59
 Operator : SY/VA
 Sample : M1859-05
 Misc : 5.05G/10ML/MSVOA_W/SOIL
 ALS Vial : 4 Sample Multiplier: 1

Instrument :
 MSVOA_W
 ClientSampleId :
 BG544

Integration Parameters: LSCINT.P

Integrator: RTE
 Smoothing : OFF Filtering: 5
 Sampling : 1 Min Area: 0 % of largest Peak
 Start Thrs: 0.2 Max Peaks: 100
 Stop Thrs : 0 Peak Location: TOP

If leading or trailing edge < 100 prefer < Baseline drop else tangent >
 Peak separation: 5

Method : Z:\voasrv\HPCHEM1\MSVOA_W\Method\SOM2WLM031921S.M
 Title : VOC Analysis

37	6.994	832	835	837	rBV3	890	851	0.05%	0.006%
38	7.079	841	849	860	rBV	46358	130281	7.09%	0.929%
39	7.348	891	893	894	rBV	682	567	0.03%	0.004%
40	7.439	904	908	912	rVB4	721	685	0.04%	0.005%
41	7.470	912	913	918	rVB3	705	694	0.04%	0.005%
42	7.646	932	942	958	rBV	308439	750907	40.87%	5.352%
43	7.951	987	992	999	rVB9	1726	4216	0.23%	0.030%
44	8.061	1008	1010	1014	rBV4	623	882	0.05%	0.006%
45	8.146	1021	1024	1025	rBV	339	423	0.02%	0.003%
46	8.159	1025	1026	1030	rVB3	679	614	0.03%	0.004%
47	8.195	1030	1032	1033	rBV	599	400	0.02%	0.003%
48	8.274	1033	1045	1065	rBV2	611582	1837472	100.00%	13.096%
49	8.567	1088	1093	1098	rBV5	739	1640	0.09%	0.012%
50	8.628	1098	1103	1108	rVB5	1076	1907	0.10%	0.014%
51	8.683	1108	1112	1113	rBV3	953	1259	0.07%	0.009%
52	8.732	1119	1120	1128	rVB5	482	961	0.05%	0.007%
53	8.841	1128	1138	1150	rBV	628901	1232202	67.06%	8.782%
54	9.043	1169	1171	1173	rBV	453	448	0.02%	0.003%
55	9.079	1173	1177	1181	rVV4	1147	1911	0.10%	0.014%
56	9.134	1185	1186	1188	rVB2	809	397	0.02%	0.003%
57	9.274	1200	1209	1218	rBV	405265	822806	44.78%	5.864%
58	9.610	1263	1264	1266	rBV2	429	426	0.02%	0.003%
59	9.640	1268	1269	1276	rVV2	707	902	0.05%	0.006%
60	9.780	1290	1292	1293	rBV2	1148	754	0.04%	0.005%
61	10.036	1326	1334	1344	rBV	243052	434346	23.64%	3.096%
62	10.323	1373	1381	1388	rBV	914152	1614425	87.86%	11.506%
63	10.579	1416	1423	1431	rBV	153537	265148	14.43%	1.890%
64	10.707	1438	1444	1450	rVB2	26145	47483	2.58%	0.338%
65	10.926	1474	1480	1497	rVB	181077	319407	17.38%	2.277%
66	11.518	1575	1577	1581	rVB3	631	622	0.03%	0.004%
67	11.634	1588	1596	1607	rBV	846137	1480537	80.57%	10.552%
68	11.841	1624	1630	1641	rVB3	4621	10405	0.57%	0.074%
69	11.926	1641	1644	1647	rVB3	688	692	0.04%	0.005%
70	12.012	1655	1658	1659	rBV2	677	494	0.03%	0.004%
71	12.170	1678	1684	1692	rVB5	3926	9190	0.50%	0.065%
72	12.243	1692	1696	1702	rBV3	1675	3509	0.19%	0.025%
73	12.310	1706	1707	1709	rBV2	552	452	0.02%	0.003%
74	12.335	1709	1711	1715	rVV4	934	1141	0.06%	0.008%
75	12.469	1726	1733	1739	rBV5	3238	5491	0.30%	0.039%
76	12.603	1747	1755	1762	rBV2	44046	84575	4.60%	0.603%

Data Path : Z:\voasrv\HPCHEM1\MSVOA_W\Data\VW040121\
 Data File : VW018512.D
 Acq On : 31 Mar 2021 14:59
 Operator : SY/VA
 Sample : M1859-05
 Misc : 5.05G/10ML/MSVOA_W/SOIL
 ALS Vial : 4 Sample Multiplier: 1

Instrument :
 MSVOA_W
 ClientSampleId :
 BG544

Integration Parameters: LSCINT.P

Integrator: RTE
 Smoothing : OFF Filtering: 5
 Sampling : 1 Min Area: 0 % of largest Peak
 Start Thrs: 0.2 Max Peaks: 100
 Stop Thrs : 0 Peak Location: TOP

If leading or trailing edge < 100 prefer < Baseline drop else tangent >
 Peak separation: 5

Method : Z:\voasrv\HPCHEM1\MSVOA_W\Method\SOM2WLM031921S.M
 Title : VOC Analysis

77	12.694	1763	1770	1776	rBV	317274	528066	28.74%	3.764%
78	12.865	1796	1798	1799	rBV2	797	597	0.03%	0.004%
79	13.072	1831	1832	1833	rBV	911	583	0.03%	0.004%
80	13.091	1833	1835	1837	rVV3	1124	1193	0.06%	0.009%
81	13.194	1849	1852	1856	rVB2	8367	10833	0.59%	0.077%
82	13.249	1858	1861	1865	rVB3	5565	7730	0.42%	0.055%
83	13.298	1865	1869	1877	rVB3	4944	9506	0.52%	0.068%
84	13.402	1877	1886	1892	rBV6	13323	28369	1.54%	0.202%
85	13.554	1905	1911	1933	rVB	914134	1510166	82.19%	10.763%
86	13.767	1940	1946	1951	rBV6	5700	11564	0.63%	0.082%
87	13.853	1953	1960	1971	rVV	809778	1297695	70.62%	9.249%
88	14.066	1990	1995	2001	rBV2	30653	49790	2.71%	0.355%
89	14.322	2033	2037	2048	rVB5	10773	20314	1.11%	0.145%
90	14.523	2066	2070	2074	rVB3	2633	3996	0.22%	0.028%
91	14.627	2082	2087	2094	rBV3	5600	9311	0.51%	0.066%
92	14.718	2099	2102	2107	rVB5	3293	5172	0.28%	0.037%
93	14.834	2118	2121	2124	rBV4	884	1453	0.08%	0.010%
94	14.865	2124	2126	2127	rVB2	756	410	0.02%	0.003%
95	15.133	2165	2170	2174	rBV3	5598	8574	0.47%	0.061%
96	15.365	2204	2208	2212	rBV3	4651	7566	0.41%	0.054%
97	15.487	2225	2228	2233	rVB2	6677	9940	0.54%	0.071%
98	15.554	2234	2239	2245	rVB7	6120	10976	0.60%	0.078%
99	15.877	2291	2292	2295	rVB2	1468	1241	0.07%	0.009%
100	16.456	2385	2387	2388	rBV2	925	535	0.03%	0.004%

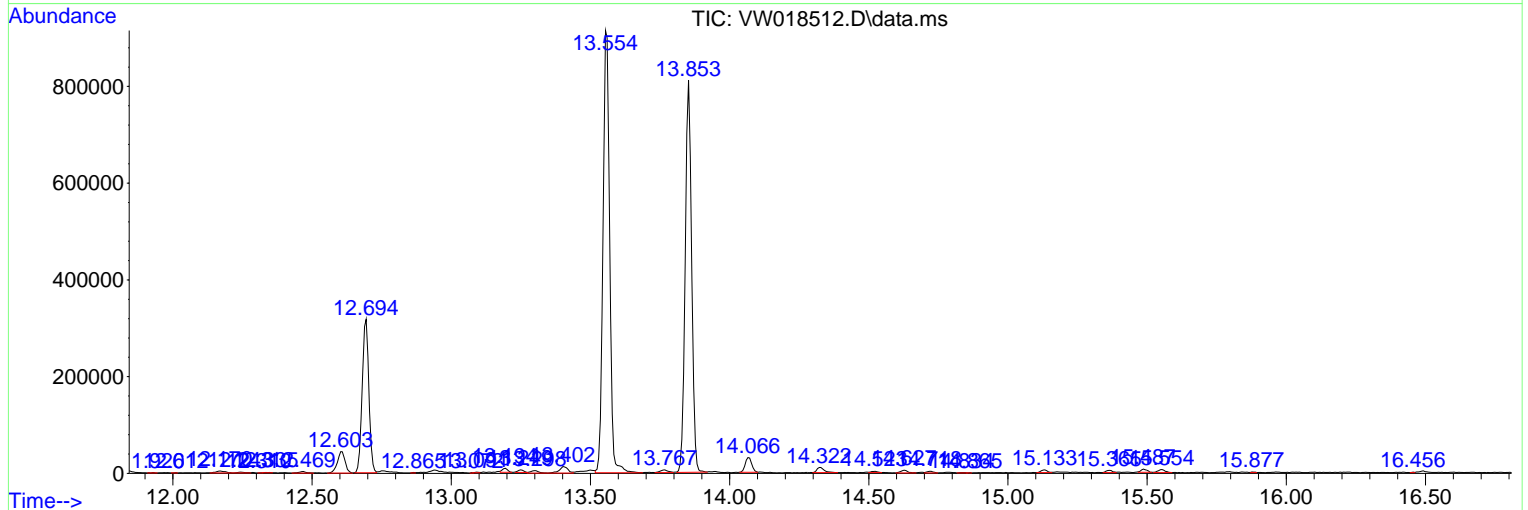
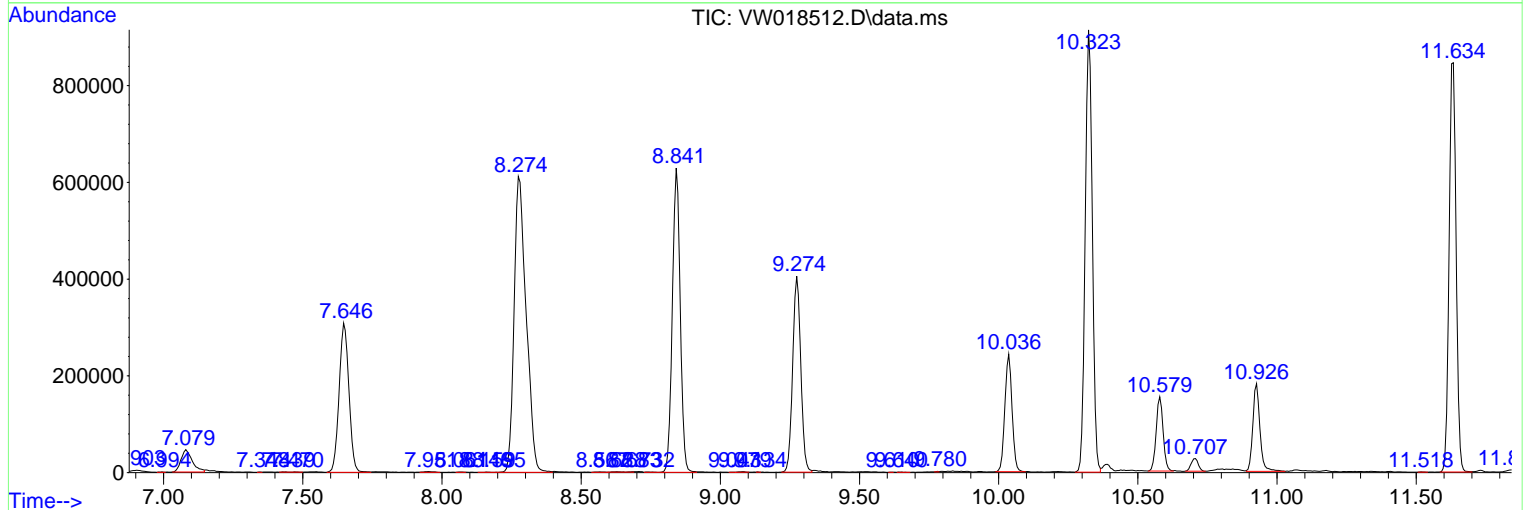
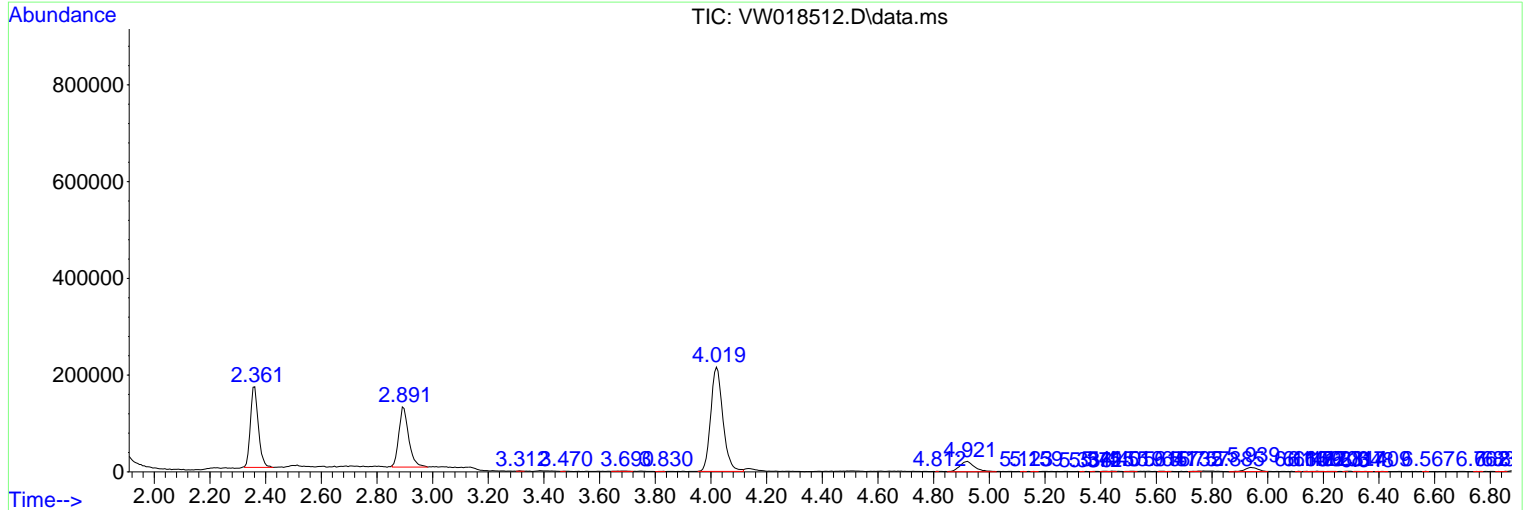
Sum of corrected areas: 14030590

Data Path : Z:\voasrv\HPCHEM1\MSVOA_W\Data\VW040121\
 Data File : VW018512.D
 Acq On : 31 Mar 2021 14:59
 Operator : SY/VA
 Sample : M1859-05
 Misc : 5.05G/10ML/MSVOA_W/SOIL
 ALS Vial : 4 Sample Multiplier: 1

Instrument :
 MSVOA_W
 ClientSampleId :
 BG544

Quant Method : Z:\voasrv\HPCHEM1\MSVOA_W\Method\SOM2WLM031921S.M
 Quant Title : VOC Analysis

TIC Library : C:\DATABASE\NIST11.L
 TIC Integration Parameters: LSCINT.P



Data Path : Z:\voasrv\HPCHEM1\MSVOA_W\Data\VW040121\
Data File : VW018512.D
Acq On : 31 Mar 2021 14:59
Operator : SY/VA
Sample : M1859-05
Misc : 5.05G/10ML/MSVOA_W/SOIL
ALS Vial : 4 Sample Multiplier: 1

Instrument :
MSVOA_W
ClientSampleId :
BG544

Quant Method : Z:\voasrv\HPCHEM1\MSVOA_W\Method\SOM2WLM031921S.M
Quant Title : VOC Analysis

TIC Library : C:\DATABASE\NIST11.L
TIC Integration Parameters: LSCINT.P

No Library Search Compounds Detected

Data Path : Z:\voasrv\HPCHEM1\MSVOA_W\Data\VW040121\
Data File : VW018512.D
Acq On : 31 Mar 2021 14:59
Operator : SY/VA
Sample : M1859-05
Misc : 5.05G/10ML/MSVOA_W/SOIL
ALS Vial : 4 Sample Multiplier: 1

Instrument :
MSVOA_W
ClientSampleId :
BG544

Quant Method : Z:\voasrv\HPCHEM1\MSVOA_W\Method\SOM2WLM031921S.M
Quant Title : VOC Analysis

TIC Library : C:\DATABASE\NIST11.L
TIC Integration Parameters: LSCINT.P

TIC Top Hit name	RT	EstConc	Units	Response	--Internal Standard--		
					#	RT	Resp Conc
