

Data Path : Z:\voasrv\HPCHEM1\MSVOA_W\Data\VW040221\
 Data File : VW018545.D
 Acq On : 02 Apr 2021 12:03
 Operator : SY/VA
 Sample : VW0402SBL01
 Misc : 5.00G/10ML/MSVOA_W/SOIL
 ALS Vial : 3 Sample Multiplier: 1

Instrument :
 MSVOA_W
 ClientSampled :
 VBLK18

Quant Time: Apr 02 23:45:15 2021
 Quant Method : Z:\voasrv\HPCHEM1\MSVOA_W\Method\SOM2WLM031921S.M
 Quant Title : VOC Analysis
 QLast Update : Fri Apr 02 23:44:48 2021
 Response via : Initial Calibration

Compound	R.T.	QIon	Response	Conc	Units	Dev(Min)

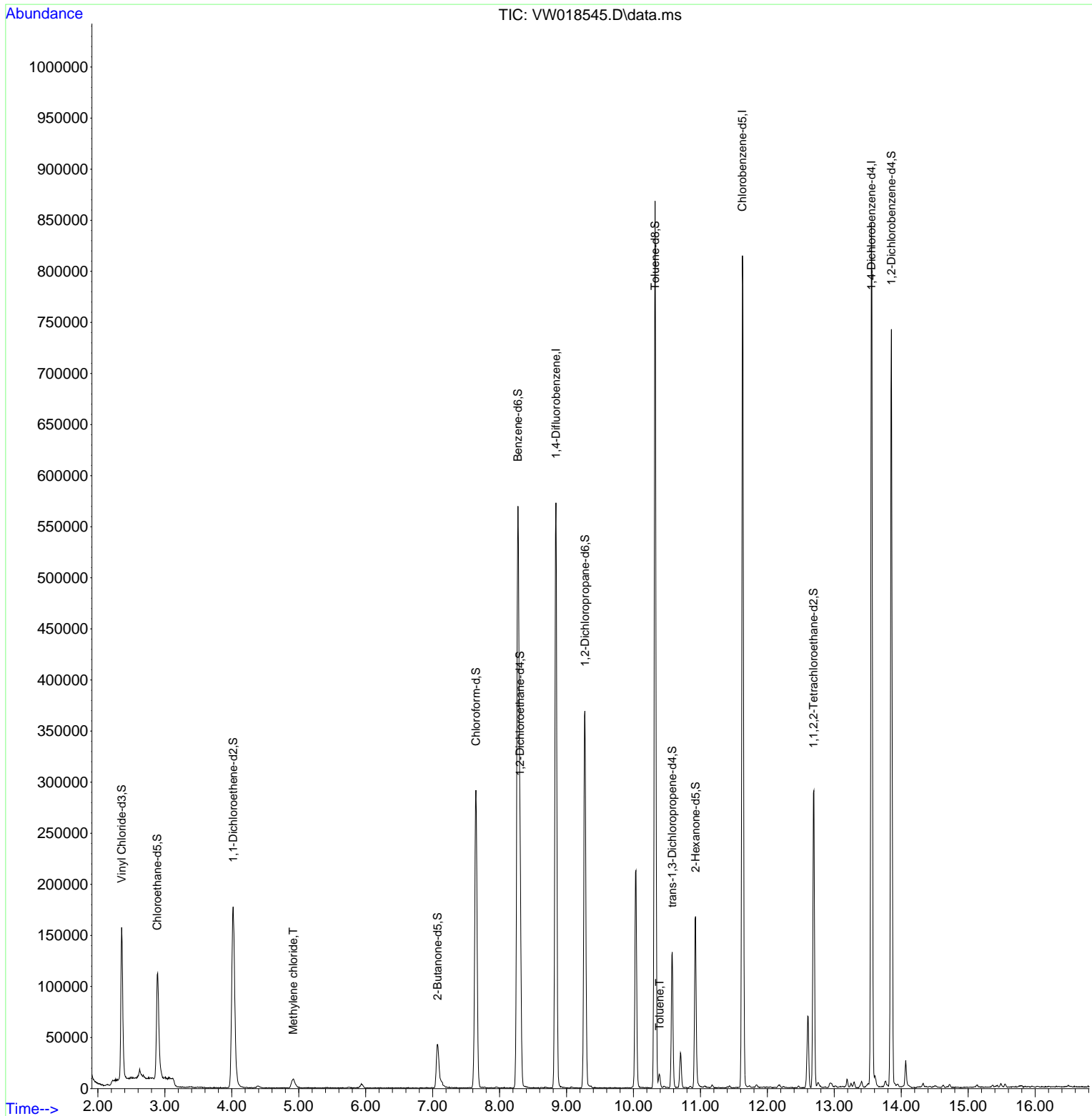
Internal Standards						
1) 1,4-Difluorobenzene	8.842	114	476826	25.00	ug/L	0.00
28) Chlorobenzene-d5	11.628	117	437175	25.00	ug/L	0.00
60) 1,4-Dichlorobenzene-d4	13.554	152	201501	25.00	ug/L	0.00
System Monitoring Compounds						
4) Vinyl Chloride-d3	2.355	65	177836	26.80	ug/L	0.00
Spiked Amount	25.000	Range 30 - 150	Recovery =	107.20%		
7) Chloroethane-d5	2.885	69	143530	24.71	ug/L	0.00
Spiked Amount	25.000	Range 30 - 150	Recovery =	98.84%		
10) 1,1-Dichloroethene-d2	4.019	63	199819	17.44	ug/L	0.00
Spiked Amount	25.000	Range 45 - 110	Recovery =	69.76%		
20) 2-Butanone-d5	7.074	46	72494	49.07	ug/L	0.00
Spiked Amount	50.000	Range 20 - 135	Recovery =	98.14%		
24) Chloroform-d	7.647	84	291634	24.01	ug/L	0.00
Spiked Amount	25.000	Range 40 - 150	Recovery =	96.04%		
26) 1,2-Dichloroethane-d4	8.305	65	175469	24.75	ug/L	0.00
Spiked Amount	25.000	Range 70 - 130	Recovery =	99.00%		
29) Benzene-d6	8.275	84	581025	25.00	ug/L	0.00
Spiked Amount	25.000	Range 20 - 135	Recovery =	100.00%		
33) 1,2-Dichloropropane-d6	9.274	67	166921	24.90	ug/L	0.00
Spiked Amount	25.000	Range 70 - 120	Recovery =	99.60%		
37) Toluene-d8	10.323	98	559131	24.99	ug/L	0.00
Spiked Amount	25.000	Range 30 - 130	Recovery =	99.96%		
38) trans-1,3-Dichloroprop...	10.579	79	73553	21.27	ug/L	0.00
Spiked Amount	25.000	Range 30 - 135	Recovery =	85.08%		
39) 2-Hexanone-d5	10.927	63	57177	43.58	ug/L	0.00
Spiked Amount	50.000	Range 20 - 135	Recovery =	87.16%		
48) 1,1,2,2-Tetrachloroeth...	12.688	84	141949	23.67	ug/L	0.00
Spiked Amount	25.000	Range 45 - 120	Recovery =	94.68%		
61) 1,2-Dichlorobenzene-d4	13.853	152	179899	25.11	ug/L	0.00
Spiked Amount	25.000	Range 75 - 120	Recovery =	100.44%		
Target Compounds						
						Qvalue
16) Methylene chloride	4.915	84	7486	0.96	ug/L	89
44) Toluene	10.390	91	8895	0.31	ug/L	85

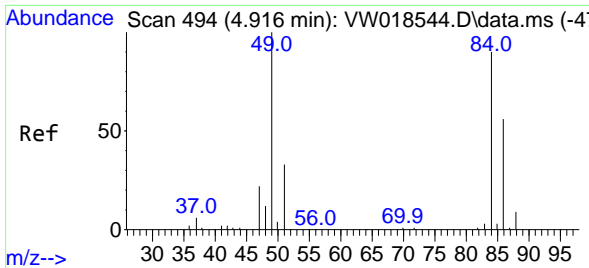
(#) = qualifier out of range (m) = manual integration (+) = signals summed

Data Path : Z:\voasrv\HPCHEM1\MSVOA_W\Data\VW040221\
 Data File : VW018545.D
 Acq On : 02 Apr 2021 12:03
 Operator : SY/VA
 Sample : VW0402SBL01
 Misc : 5.00G/10ML/MSVOA_W/SOIL
 ALS Vial : 3 Sample Multiplier: 1

Instrument :
 MSVOA_W
 ClientSampled :
 VBLK18

Quant Time: Apr 02 23:45:15 2021
 Quant Method : Z:\voasrv\HPCHEM1\MSVOA_W\Method\SOM2WLM031921S.M
 Quant Title : VOC Analysis
 QLast Update : Fri Apr 02 23:44:48 2021
 Response via : Initial Calibration



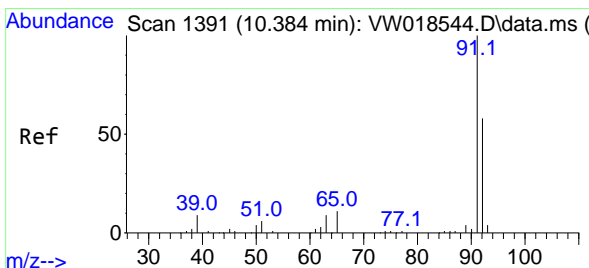
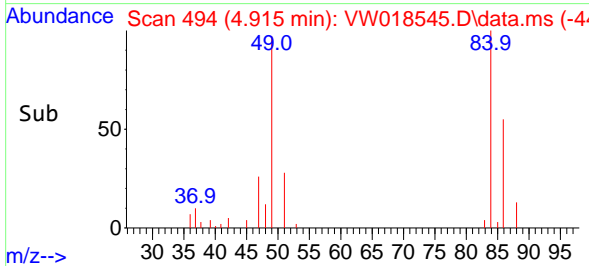
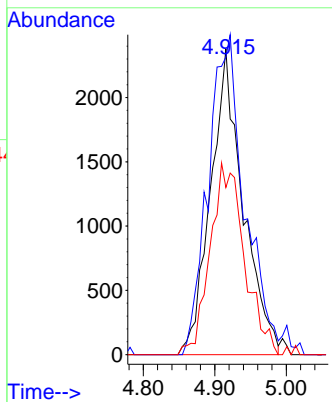
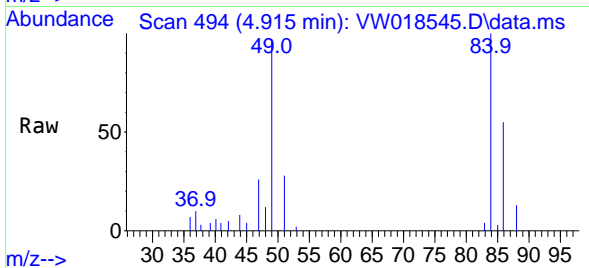


#16
 Methylene chloride
 Concen: 0.96 ug/L
 RT: 4.915 min Scan# 494
 Delta R.T. -0.000 min
 Lab File: VW018545.D
 Acq: 02 Apr 2021 12:03

Instrument :
 MSVOA_W
 ClientSampled :
 VBLK18

Tgt Ion: 84 Resp: 7486

Ion	Ratio	Lower	Upper
84	100		
49	97.4	74.4	138.2
86	54.7	46.1	85.7



#44
 Toluene
 Concen: 0.31 ug/L
 RT: 10.390 min Scan# 1392
 Delta R.T. 0.006 min
 Lab File: VW018545.D
 Acq: 02 Apr 2021 12:03

Tgt Ion: 91 Resp: 8895

Ion	Ratio	Lower	Upper
91	100		
92	49.0	42.3	78.5

