

Data Path : Z:\voasrv\HPCHEM1\MSVOA\_W\Data\VW040424\  
 Data File : VW028322.D  
 Acq On : 04 Apr 2024 18:15  
 Operator : SY/MD  
 Sample : P1993-09  
 Misc : 5.40g/10mL/MSVOA\_W/SOIL/A  
 ALS Vial : 1 Sample Multiplier: 1

Instrument :  
 MSVOA\_W  
 ClientSampleId :

Quant Time: Apr 05 01:04:38 2024  
 Quant Method : Z:\voasrv\HPCHEM1\MSVOA\_W\Method\SFAMWLM031424SMA.M  
 Quant Title : SFAM01.0  
 QLast Update : Fri Apr 05 00:59:55 2024  
 Response via : Initial Calibration

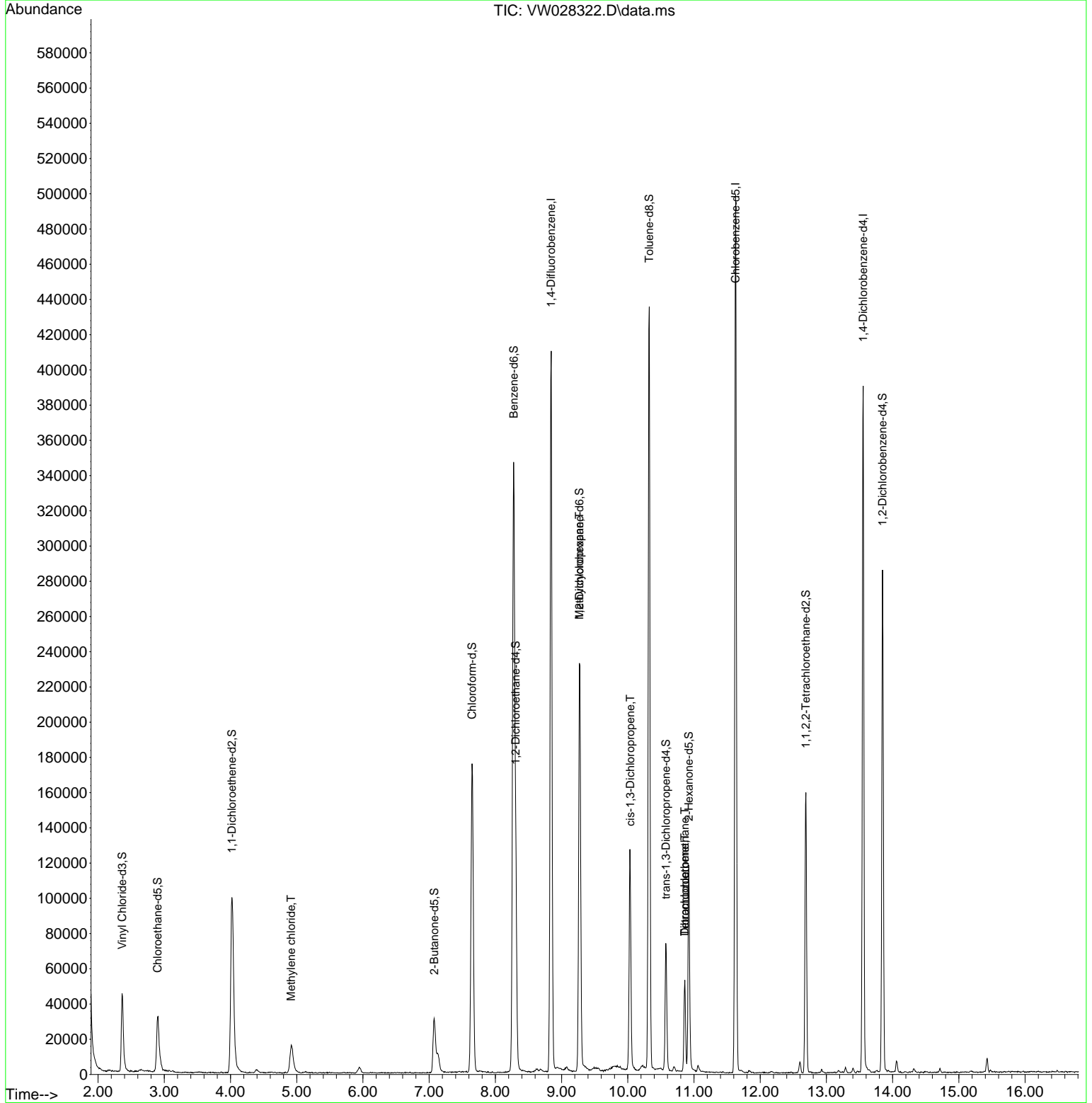
Compound	R.T.	QI on	Response	Conc	Units	Dev(Min)
<b>Internal Standards</b>						
1) 1,4-Difluorobenzene	8.843	114	336816	25.000	ug/L	0.00
28) Chlorobenzene-d5	11.629	117	275059	25.000	ug/L	0.00
58) 1,4-Dichlorobenzene-d4	13.556	152	102813	25.000	ug/L	0.00
<b>System Monitoring Compounds</b>						
4) Vinyl chloride-d3	2.363	65	59537	15.107	ug/L	0.00
Spike Amount	25.000	Range	30 - 150	Recovery	=	60.440%
7) Chloroethane-d5	2.899	69	46381	16.846	ug/L	0.00
Spike Amount	25.000	Range	30 - 150	Recovery	=	67.400%
11) 1,1-Dichloroethene-d2	4.021	65	36952	14.786	ug/L	0.00
Spike Amount	25.000	Range	45 - 110	Recovery	=	59.160%
21) 2-Butanone-d5	7.075	46	52442	45.118	ug/L	-0.01
Spike Amount	50.000	Range	20 - 135	Recovery	=	90.240%
24) Chloroform-d	7.648	84	182122	18.337	ug/L	0.00
Spike Amount	25.000	Range	40 - 150	Recovery	=	73.360%
26) 1,2-Dichloroethane-d4	8.307	65	98313	17.962	ug/L	0.00
Spike Amount	25.000	Range	70 - 130	Recovery	=	71.840%
32) Benzene-d6	8.276	84	347485	20.692	ug/L	0.00
Spike Amount	25.000	Range	20 - 135	Recovery	=	82.760%
36) 1,2-Dichloropropane-d6	9.270	67	107564	22.257	ug/L	0.00
Spike Amount	25.000	Range	70 - 120	Recovery	=	89.040%
41) Toluene-d8	10.325	98	287673	18.572	ug/L	0.00
Spike Amount	25.000	Range	30 - 130	Recovery	=	74.280%
43) trans-1,3-Dichloropropene	10.575	79	40134	18.285	ug/L	0.00
Spike Amount	25.000	Range	30 - 135	Recovery	=	73.120%
47) 2-Hexanone-d5	10.922	63	39761	49.774	ug/L	0.00
Spike Amount	50.000	Range	20 - 135	Recovery	=	99.540%
56) 1,1,2,2-Tetrachloroethene	12.690	84	79998	22.409	ug/L	0.00
Spike Amount	25.000	Range	45 - 120	Recovery	=	89.640%
66) 1,2-Dichlorobenzene-d4	13.848	152	74359	19.854	ug/L	0.00
Spike Amount	25.000	Range	75 - 120	Recovery	=	79.400%
<b>Target Compounds</b>						
16) Methylene chloride	4.917	84	12756	2.488	ug/L	93
35) Methylcyclohexane	9.270	83	26879	3.367	ug/L #	18
39) cis-1,3-Dichloropropene	10.038	75	3289	0.474	ug/L #	73
46) Tetrachloroethene	10.861	164	11254	2.957	ug/L	94
49) Dibromochloromethane	10.861	129	9457	2.553	ug/L #	11

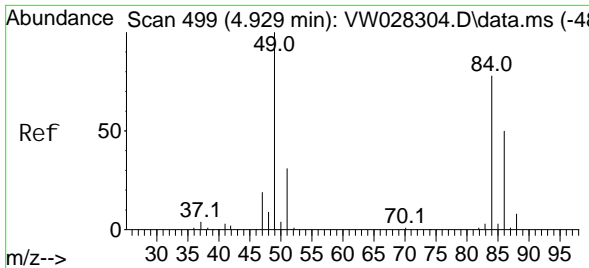
(#) = qualifier out of range (m) = manual integration (+) = signals summed

Data Path : Z:\voasrv\HPCHEM1\MSVOA\_W\Data\VW040424\  
 Data File : VW028322.D  
 Acq On : 04 Apr 2024 18:15  
 Operator : SY/MD  
 Sample : P1993-09  
 Misc : 5.40g/10mL/MSVOA\_W/SOIL/A  
 ALS Vial : 1 Sample Multiplier: 1

Instrument :  
 MSVOA\_W  
 ClientSampleId :

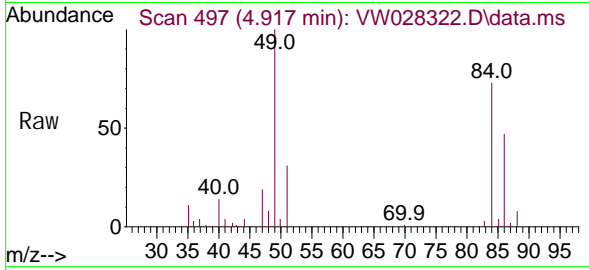
Quant Time: Apr 05 01:04:38 2024  
 Quant Method : Z:\voasrv\HPCHEM1\MSVOA\_W\Method\SFAMWLM031424SMA.M  
 Quant Title : SFAM01.0  
 QLast Update : Fri Apr 05 00:59:55 2024  
 Response via : Initial Calibration





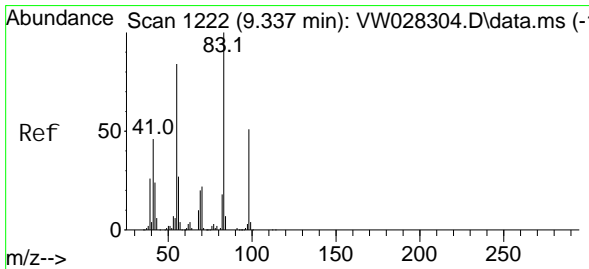
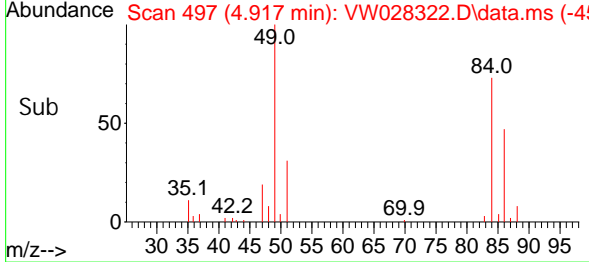
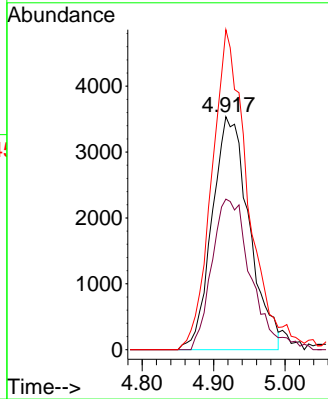
#16  
 Methylene chloride  
 Concen: 2.488 ug/L  
 RT: 4.917 min Scan# 497  
 Delta R.T. -0.012 min  
 Lab File: VW028322.D  
 Acq: 04 Apr 2024 18:15

Instrument : MSVOA\_W  
 ClientSampleId :



Tgt Ion: 84 Resp: 12756

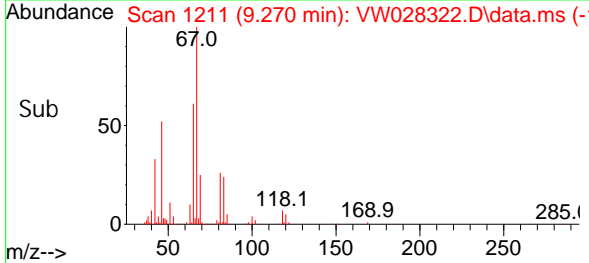
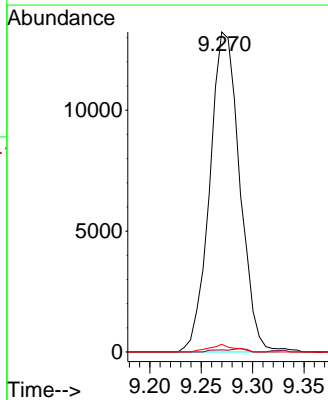
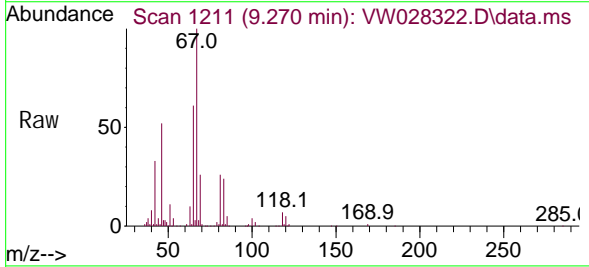
Ion	Ratio	Lower	Upper
84	100		
86	64.6	43.1	80.1
49	137.4	89.4	166.0

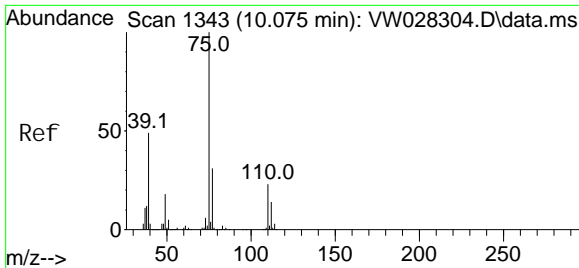


#35  
 Methyl cycl ohexane  
 Concen: 3.367 ug/L  
 RT: 9.270 min Scan# 1211  
 Delta R.T. -0.067 min  
 Lab File: VW028322.D  
 Acq: 04 Apr 2024 18:15

Tgt Ion: 83 Resp: 26879

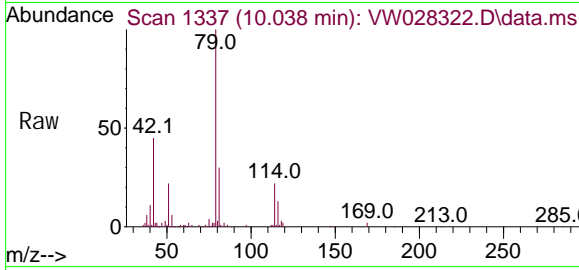
Ion	Ratio	Lower	Upper
83	100		
55	0.4	64.2	96.4#
98	2.0	38.3	57.5#



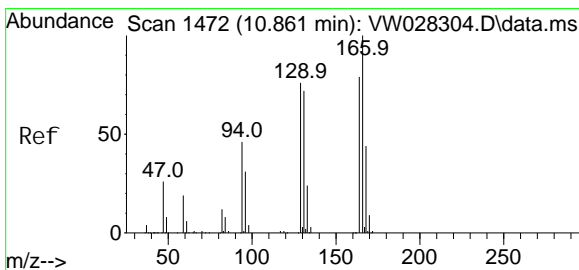
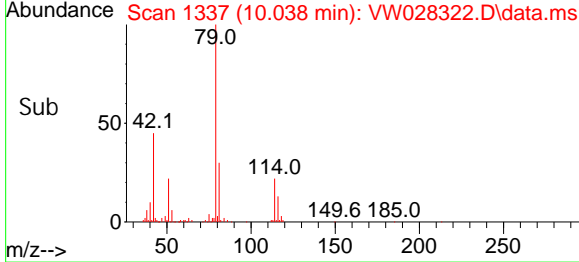
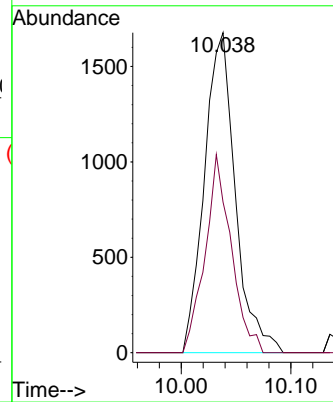


#39  
 cis-1,3-Dichloropropene  
 Concen: 0.474 ug/L  
 RT: 10.038 min Scan# 1337  
 Delta R.T. -0.037 min  
 Lab File: VW028322.D  
 Acq: 04 Apr 2024 18:15

Instrument : MSVOA\_W  
 ClientSampleId :

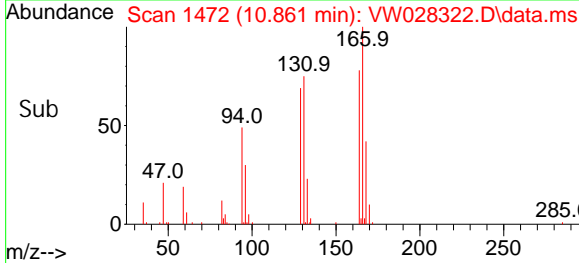
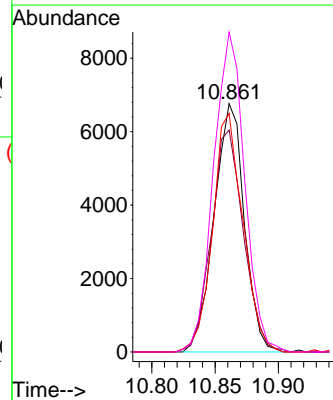
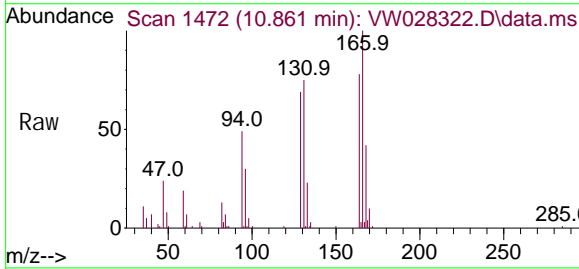


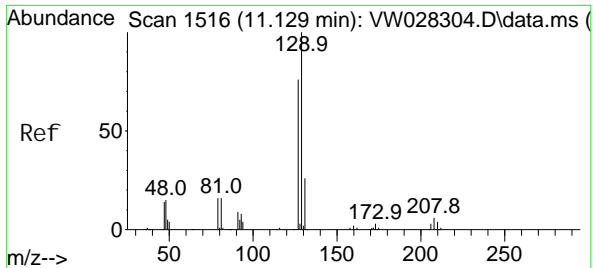
Tgt Ion: 75 Resp: 3289  
 Ion Ratio Lower Upper  
 75 100  
 77 47.0 22.5 41.7#



#46  
 Tetrachloroethene  
 Concen: 2.957 ug/L  
 RT: 10.861 min Scan# 1472  
 Delta R.T. -0.000 min  
 Lab File: VW028322.D  
 Acq: 04 Apr 2024 18:15

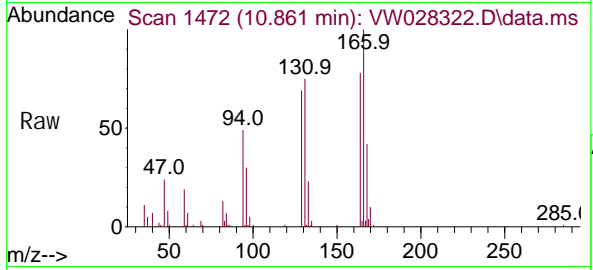
Tgt Ion: 164 Resp: 11254  
 Ion Ratio Lower Upper  
 164 100  
 129 89.3 64.0 119.0  
 131 96.1 62.6 116.3  
 166 128.9 84.7 157.3





#49  
 Di bromochloromethane  
 Concen: 2.553 ug/L  
 RT: 10.861 min Scan# 14  
 Delta R.T. -0.268 min  
 Lab File: VW028322.D  
 Acq: 04 Apr 2024 18:15

Instrument : MSVOA\_W  
 ClientSampleId :



Tgt Ion: 129 Resp: 9457  
 Ion Ratio Lower Upper  
 129 100  
 127 0.0 53.1 98.7#

