

Data Path : Z:\voasrv\HPCHEM1\MSVOA\_W\Data\VW040424\  
 Data File : VW028325.D  
 Acq On : 04 Apr 2024 19:26  
 Operator : SY/MD  
 Sample : P1993-12  
 Misc : 4.62g/10mL/MSVOA\_W/SOIL/A  
 ALS Vial : 1 Sample Multiplier: 1

Instrument :  
 MSVOA\_W  
 ClientSampleId :  
 BH2L3

Integration Parameters: LSCINT.P

Integrator: RTE  
 Smoothing : OFF  
 Sampling : 1  
 Start Thrs: 0.2  
 Stop Thrs : 0

Filtering: 5  
 Min Area: 0 % of largest Peak  
 Max Peaks: 100  
 Peak Location: TOP

If leading or trailing edge < 100 prefer < Baseline drop else tangent >  
 Peak separation: 5

Method : Z:\voasrv\HPCHEM1\MSVOA\_W\Method\SFAMWLM031424SMA.M  
 Title : SFAM01.0

Signal : TIC: VW028325.D\data.ms

peak #	R.T. min	first scan	max scan	last scan	PK TY	peak height	corr. area	corr. % max.	% of total
1	2.369	72	79	93	rBV	42693	98680	9.32%	1.193%
2	2.899	157	166	185	rBV2	32055	97415	9.20%	1.178%
3	3.277	227	228	231	rBV2	426	508	0.05%	0.006%
4	3.350	238	240	241	rBV2	415	312	0.03%	0.004%
5	3.436	252	254	257	rVB2	542	364	0.03%	0.004%
6	3.545	268	272	274	rBV3	590	799	0.08%	0.010%
7	3.789	309	312	314	rBV2	353	386	0.04%	0.005%
8	3.868	321	325	329	rBV4	399	600	0.06%	0.007%
9	4.027	339	351	366	rBV	107171	339629	32.06%	4.106%
10	4.387	407	410	411	rBV2	1129	1035	0.10%	0.013%
11	4.838	481	484	486	rBV2	325	342	0.03%	0.004%
12	4.917	486	497	515	rVV2	17465	64182	6.06%	0.776%
13	5.173	537	539	543	rBV2	408	354	0.03%	0.004%
14	5.289	555	558	559	rBV2	328	323	0.03%	0.004%
15	5.368	567	571	574	rBV2	532	1035	0.10%	0.013%
16	5.435	580	582	586	rBV2	576	687	0.06%	0.008%
17	5.490	589	591	594	rBV3	367	445	0.04%	0.005%
18	5.539	597	599	600	rBV	440	339	0.03%	0.004%
19	5.557	600	602	604	rVV2	500	373	0.04%	0.005%
20	5.582	604	606	608	rVV2	492	376	0.04%	0.005%
21	5.691	621	624	626	rVB	321	391	0.04%	0.005%
22	5.716	626	628	629	rBV	546	350	0.03%	0.004%
23	5.734	629	631	633	rVB2	616	422	0.04%	0.005%
24	5.789	638	640	642	rVV2	506	527	0.05%	0.006%
25	5.831	645	647	650	rVV	320	385	0.04%	0.005%
26	5.947	654	666	674	rVV7	3373	11450	1.08%	0.138%
27	6.203	706	708	711	rVB2	657	495	0.05%	0.006%
28	6.234	711	713	716	rBV2	835	1010	0.10%	0.012%
29	6.472	749	752	757	rBV2	316	571	0.05%	0.007%
30	6.533	760	762	766	rBV	661	687	0.06%	0.008%
31	6.563	766	767	769	rBV	336	313	0.03%	0.004%
32	6.648	780	781	785	rVB	423	337	0.03%	0.004%
33	6.709	789	791	793	rBV3	257	309	0.03%	0.004%
34	6.837	811	812	815	rBV3	441	435	0.04%	0.005%
35	6.898	820	822	824	rBV3	721	481	0.05%	0.006%
36	6.965	832	833	835	rBV2	476	327	0.03%	0.004%

Data Path : Z:\voasrv\HPCHEM1\MSVOA\_W\Data\VW040424\  
 Data File : VW028325.D  
 Acq On : 04 Apr 2024 19:26  
 Operator : SY/MD  
 Sample : P1993-12  
 Misc : 4.62g/10mL/MSVOA\_W/SOIL/A  
 ALS Vial : 1 Sample Multiplier: 1

Instrument :  
 MSVOA\_W  
 ClientSampleId :  
 BH2L3

Integration Parameters: LSCINT.P

Integrator: RTE  
 Smoothing : OFF  
 Sampling : 1  
 Start Thrs: 0.2  
 Stop Thrs : 0

Filtering: 5  
 Min Area: 0 % of largest Peak  
 Max Peaks: 100  
 Peak Location: TOP

If leading or trailing edge < 100 prefer < Baseline drop else tangent >  
 Peak separation: 5

Method : Z:\voasrv\HPCHEM1\MSVOA\_W\Method\SFAMWLM031424SMA.M  
 Title : SFAM01.0

37	7.081	843	852	858	rBV	30605	88280	8.33%	1.067%
38	7.648	935	945	958	rBV	185522	451206	42.60%	5.454%
39	7.740	958	960	962	rBV	435	335	0.03%	0.004%
40	7.764	962	964	965	rBV2	795	597	0.06%	0.007%
41	8.002	1000	1003	1005	rVB4	444	389	0.04%	0.005%
42	8.276	1037	1048	1067	rBV2	360386	1059236	100.00%	12.804%
43	8.685	1113	1115	1116	rBV2	685	671	0.06%	0.008%
44	8.770	1126	1129	1130	rVB3	628	460	0.04%	0.006%
45	8.843	1132	1141	1151	rBV	431741	864667	81.63%	10.452%
46	9.124	1186	1187	1190	rVB2	677	437	0.04%	0.005%
47	9.191	1197	1198	1200	rBV2	967	606	0.06%	0.007%
48	9.270	1203	1211	1222	rBV	245561	502150	47.41%	6.070%
49	9.502	1246	1249	1251	rBV3	607	676	0.06%	0.008%
50	9.599	1264	1265	1267	rBV2	514	500	0.05%	0.006%
51	9.636	1269	1271	1273	rBV2	545	551	0.05%	0.007%
52	10.032	1329	1336	1349	rBV	133625	243673	23.00%	2.946%
53	10.197	1361	1363	1369	rVB8	840	1167	0.11%	0.014%
54	10.318	1376	1383	1391	rBV	492749	878196	82.91%	10.616%
55	10.575	1418	1425	1438	rBV	84019	146975	13.88%	1.777%
56	10.696	1440	1445	1451	rVB2	2477	4419	0.42%	0.053%
57	10.788	1458	1460	1463	rBV4	500	551	0.05%	0.007%
58	10.922	1474	1482	1497	rBV	128366	221796	20.94%	2.681%
59	11.056	1502	1504	1510	rVB4	4728	7687	0.73%	0.093%
60	11.178	1521	1524	1527	rBV3	668	1040	0.10%	0.013%
61	11.367	1554	1555	1557	rBV2	556	430	0.04%	0.005%
62	11.434	1563	1566	1569	rVB3	779	936	0.09%	0.011%
63	11.629	1590	1598	1607	rBV	622107	1028268	97.08%	12.430%
64	11.843	1627	1633	1634	rBV5	1181	1981	0.19%	0.024%
65	11.922	1644	1646	1650	rBV3	358	436	0.04%	0.005%
66	12.172	1683	1687	1694	rVB8	1423	2777	0.26%	0.034%
67	12.239	1696	1698	1699	rBV	487	460	0.04%	0.006%
68	12.306	1706	1709	1711	rBV	601	693	0.07%	0.008%
69	12.330	1711	1713	1715	rVV2	398	465	0.04%	0.006%
70	12.373	1719	1720	1722	rBV	391	317	0.03%	0.004%
71	12.599	1750	1757	1765	rVB3	9336	16997	1.60%	0.205%
72	12.690	1765	1772	1780	rBV	192937	306603	28.95%	3.706%
73	12.842	1794	1797	1799	rVB2	441	395	0.04%	0.005%
74	12.891	1802	1805	1806	rBV2	728	753	0.07%	0.009%
75	12.928	1807	1811	1815	rVV4	2646	3945	0.37%	0.048%
76	13.025	1825	1827	1830	rVB3	459	469	0.04%	0.006%

Data Path : Z:\voasrv\HPCHEM1\MSVOA\_W\Data\VW040424\  
 Data File : VW028325.D  
 Acq On : 04 Apr 2024 19:26  
 Operator : SY/MD  
 Sample : P1993-12  
 Misc : 4.62g/10mL/MSVOA\_W/SOIL/A  
 ALS Vial : 1 Sample Multiplier: 1

Instrument :  
 MSVOA\_W  
 ClientSampleId :  
 BH2L3

Integration Parameters: LSCINT.P

Integrator: RTE  
 Smoothing : OFF                   Filtering: 5  
 Sampling : 1                        Min Area: 0 % of largest Peak  
 Start Thrs: 0.2                    Max Peaks: 100  
 Stop Thrs : 0                      Peak Location: TOP

If leading or trailing edge < 100 prefer < Baseline drop else tangent >  
 Peak separation: 5

Method : Z:\voasrv\HPCHEM1\MSVOA\_W\Method\SFAMWLM031424SMA.M  
 Title : SFAM01.0

77	13.074	1833	1835	1837	rBV	511	441	0.04%	0.005%
78	13.123	1840	1843	1844	rVB2	597	424	0.04%	0.005%
79	13.190	1850	1854	1857	rVB4	1268	1754	0.17%	0.021%
80	13.287	1867	1870	1877	rVB6	1915	3831	0.36%	0.046%
81	13.470	1897	1900	1901	rBV2	736	684	0.06%	0.008%
82	13.489	1901	1903	1904	rBV2	598	565	0.05%	0.007%
83	13.556	1906	1914	1925	rVV	621753	998589	94.27%	12.071%
84	13.751	1943	1946	1948	rBV3	1433	1641	0.15%	0.020%
85	13.848	1955	1962	1975	rBV	463808	748545	70.67%	9.049%
86	14.062	1991	1997	2004	rVB2	7676	13118	1.24%	0.159%
87	14.318	2036	2039	2051	rVB7	3819	7105	0.67%	0.086%
88	14.464	2060	2063	2064	rBV3	604	618	0.06%	0.007%
89	14.482	2064	2066	2068	rBV3	539	512	0.05%	0.006%
90	14.714	2099	2104	2108	rBV5	2222	3202	0.30%	0.039%
91	14.897	2131	2134	2135	rBV2	560	486	0.05%	0.006%
92	14.921	2136	2138	2140	rVB3	562	351	0.03%	0.004%
93	15.171	2176	2179	2182	rBV4	1129	1512	0.14%	0.018%
94	15.232	2187	2189	2191	rBV2	639	625	0.06%	0.008%
95	15.324	2202	2204	2206	rBV3	600	440	0.04%	0.005%
96	15.427	2216	2221	2226	rBV	11019	16968	1.60%	0.205%
97	15.939	2303	2305	2309	rBV3	652	1048	0.10%	0.013%
98	16.086	2327	2329	2332	rBV2	570	331	0.03%	0.004%
99	16.256	2355	2357	2358	rBV	477	393	0.04%	0.005%
100	16.641	2418	2420	2422	rBV3	528	482	0.05%	0.006%

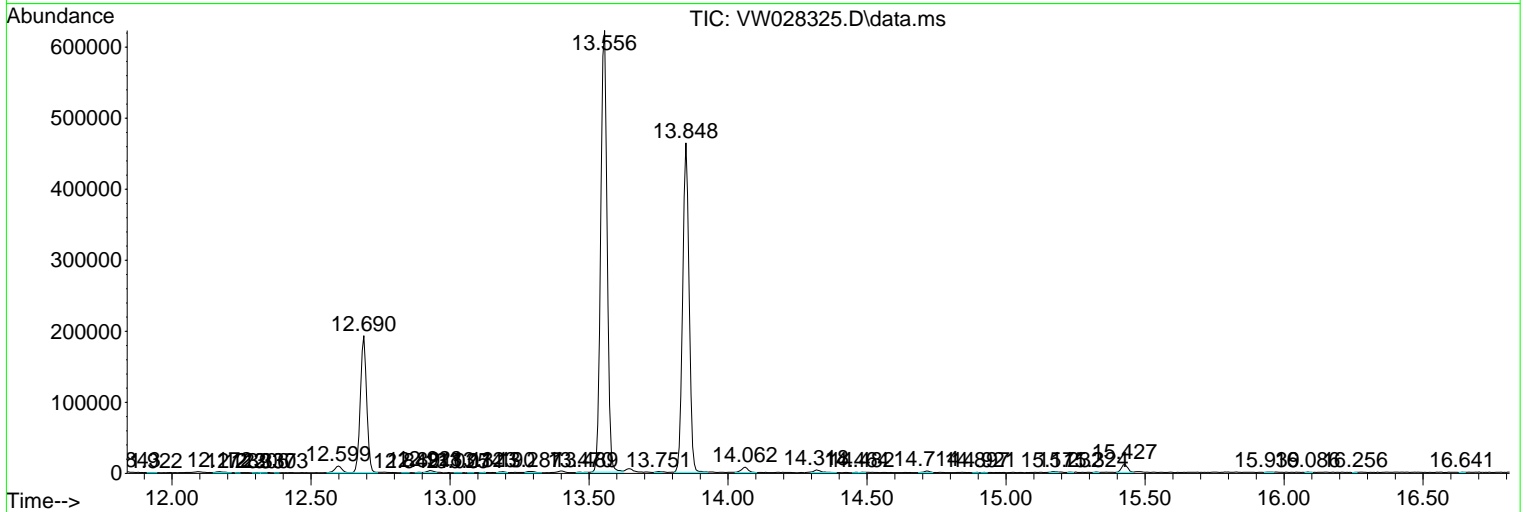
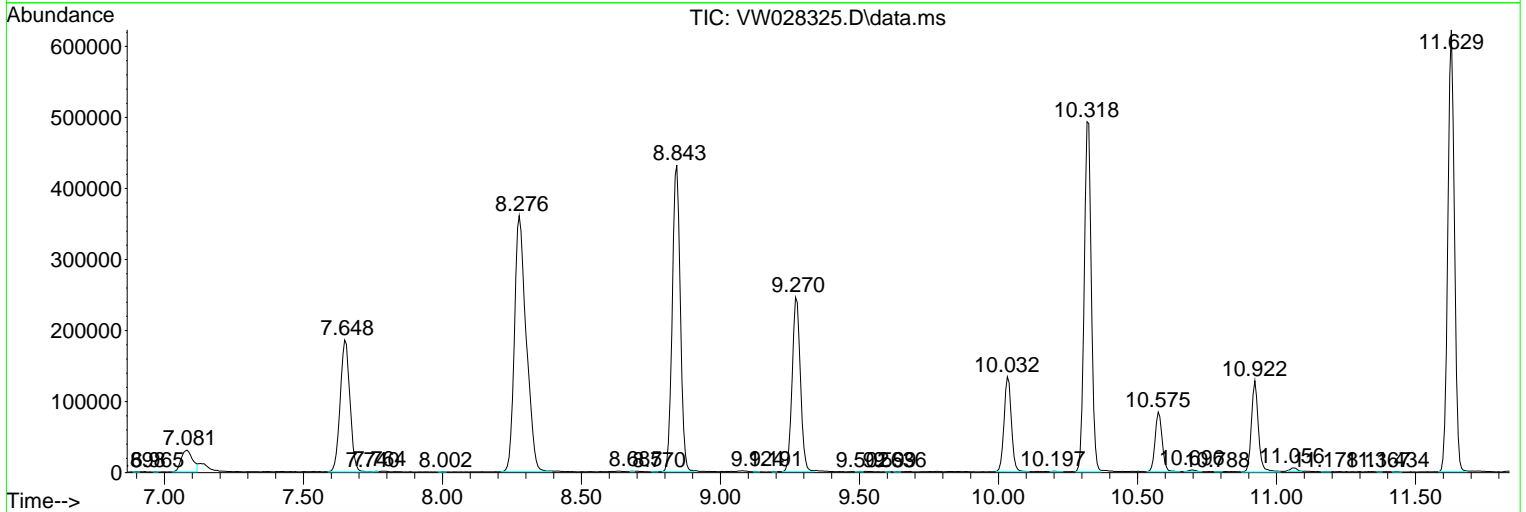
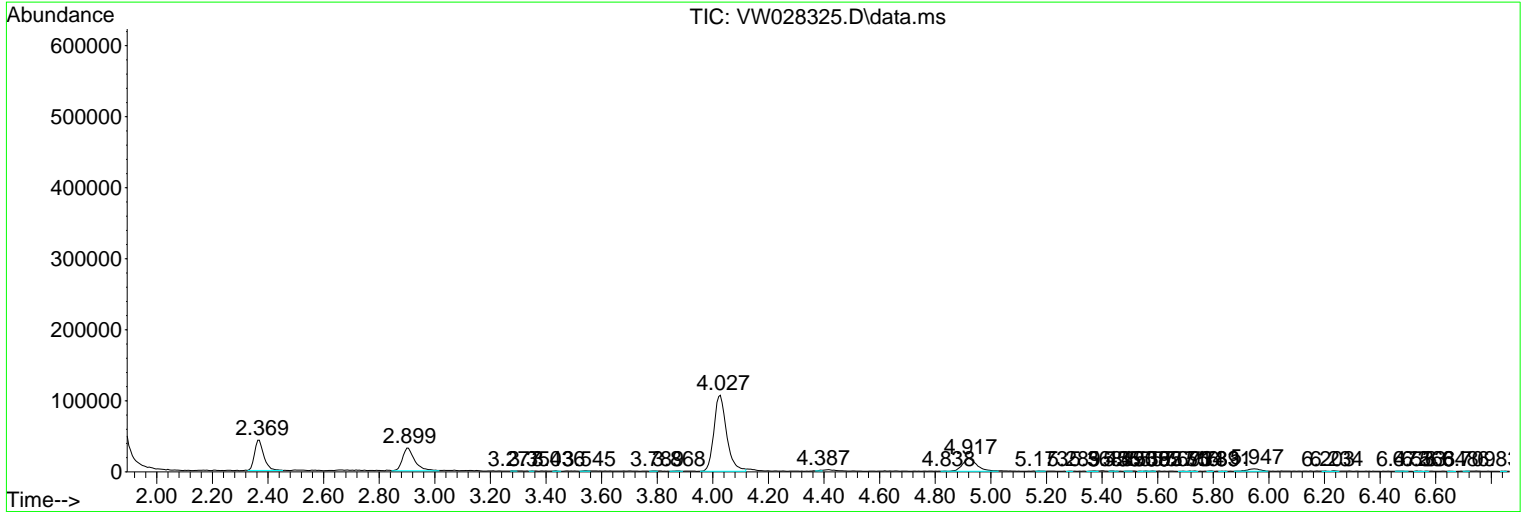
Sum of corrected areas: 8272529

Data Path : Z:\voasrv\HPCHEM1\MSVOA\_W\Data\VW040424\  
 Data File : VW028325.D  
 Acq On : 04 Apr 2024 19:26  
 Operator : SY/MD  
 Sample : P1993-12  
 Misc : 4.62g/10mL/MSVOA\_W/SOIL/A  
 ALS Vial : 1 Sample Multiplier: 1

Instrument :  
 MSVOA\_W  
 ClientSampleId :  
 BH2L3

Quant Method : Z:\voasrv\HPCHEM1\MSVOA\_W\Method\SFAMWLM031424SMA.M  
 Quant Title : SFAM01.0

TIC Library : C:\Database\NIST20.L  
 TIC Integration Parameters: LSCINT.P



Library Search Compound Report

Data Path : Z:\voasrv\HPCHEM1\MSVOA\_W\Data\VW040424\  
Data File : VW028325.D  
Acq On : 04 Apr 2024 19:26  
Operator : SY/MD  
Sample : P1993-12  
Misc : 4.62g/10mL/MSVOA\_W/SOIL/A  
ALS Vial : 1 Sample Multiplier: 1

Instrument :  
MSVOA\_W  
ClientSampleId :  
BH2L3

Quant Method : Z:\voasrv\HPCHEM1\MSVOA\_W\Method\SFAMWLM031424SMA.M  
Quant Title : SFAM01.0

TIC Library : C:\Database\NIST20.L  
TIC Integration Parameters: LSCINT.P

No Library Search Compounds Detected

\*\*\*\*\*

Data Path : Z:\voasrv\HPCHEM1\MSVOA\_W\Data\VW040424\  
Data File : VW028325.D  
Acq On : 04 Apr 2024 19:26  
Operator : SY/MD  
Sample : P1993-12  
Misc : 4.62g/10mL/MSVOA\_W/SOIL/A  
ALS Vial : 1 Sample Multiplier: 1

Instrument :  
MSVOA\_W  
ClientSampleId :  
BH2L3

Quant Method : Z:\voasrv\HPCHEM1\MSVOA\_W\Method\SFAMWLM031424SMA.M  
Quant Title : SFAM01.0

TIC Library : C:\Database\NIST20.L  
TIC Integration Parameters: LSCINT.P

TIC Top Hit name	RT	EstConc	Units	Response	--Internal Standard--		
					#	RT	Resp Conc

---