

Data Path : Z:\voasrv\HPCHEM1\MSVOA_W\Data\VW040524\
 Data File : VW028333.D
 Acq On : 05 Apr 2024 12:34
 Operator : SY/MD
 Sample : P1993-14
 Misc : 3.77g/10mL/MSVOA_W/SOIL/A
 ALS Vial : 1 Sample Multiplier: 1

Instrument :
 MSVOA_W
ClientSampleId :
 BH2L5

Manual Integrations
APPROVED
 Reviewed By :Semsettin Yesilyurt 04/08/2024
 Supervised By :Mahesh Dadoda 04/08/2024

Quant Time: Apr 05 23:44:06 2024
 Quant Method : Z:\voasrv\HPCHEM1\MSVOA_W\Method\SFAMWLM031424SMA.M
 Quant Title : SFAM01.0
 QLast Update : Fri Apr 05 23:38:30 2024
 Response via : Initial Calibration

Compound	R.T.	QIon	Response	Conc	Units	Dev(Min)
Internal Standards						
1) 1,4-Difluorobenzene	8.843	114	395541	25.000	ug/L	0.00
28) Chlorobenzene-d5	11.629	117	370722	25.000	ug/L	0.00
58) 1,4-Dichlorobenzene-d4	13.556	152	168464	25.000	ug/L	0.00
System Monitoring Compounds						
4) Vinyl Chloride-d3	2.363	65	65154	14.078	ug/L	0.00
Spiked Amount	25.000	Range 30 - 150	Recovery =	56.320%		
7) Chloroethane-d5	2.905	69	53705	16.610	ug/L	0.00
Spiked Amount	25.000	Range 30 - 150	Recovery =	66.440%		
11) 1,1-Dichloroethene-d2	4.027	65	41629	14.185	ug/L	0.00
Spiked Amount	25.000	Range 45 - 110	Recovery =	56.720%		
21) 2-Butanone-d5	7.075	46	58923	43.167	ug/L	0.00
Spiked Amount	50.000	Range 20 - 135	Recovery =	86.340%		
24) Chloroform-d	7.648	84	205872	17.651	ug/L	0.00
Spiked Amount	25.000	Range 40 - 150	Recovery =	70.600%		
26) 1,2-Dichloroethane-d4	8.307	65	114385m	17.796	ug/L	0.00
Spiked Amount	25.000	Range 70 - 130	Recovery =	71.200%		
32) Benzene-d6	8.276	84	397770	17.574	ug/L	0.00
Spiked Amount	25.000	Range 20 - 135	Recovery =	70.280%		
36) 1,2-Dichloropropane-d6	9.270	67	127168	19.524	ug/L	0.00
Spiked Amount	25.000	Range 70 - 120	Recovery =	78.080%		
41) Toluene-d8	10.318	98	350261	16.777	ug/L	0.00
Spiked Amount	25.000	Range 30 - 130	Recovery =	67.120%		
43) trans-1,3-Dichloroprop...	10.581	79	49194	16.629	ug/L	0.00
Spiked Amount	25.000	Range 30 - 135	Recovery =	66.520%		
47) 2-Hexanone-d5	10.922	63	46460	43.152	ug/L	0.00
Spiked Amount	50.000	Range 20 - 135	Recovery =	86.300%		
56) 1,1,2,2-Tetrachloroeth...	12.690	84	101392	21.073	ug/L	0.00
Spiked Amount	25.000	Range 45 - 120	Recovery =	84.280%		
66) 1,2-Dichlorobenzene-d4	13.848	152	124661	20.313	ug/L	0.00
Spiked Amount	25.000	Range 75 - 120	Recovery =	81.240%		
Target Compounds						
16) Methylene chloride	4.923	84	13952	2.318	ug/L	96

(#) = qualifier out of range (m) = manual integration (+) = signals summed

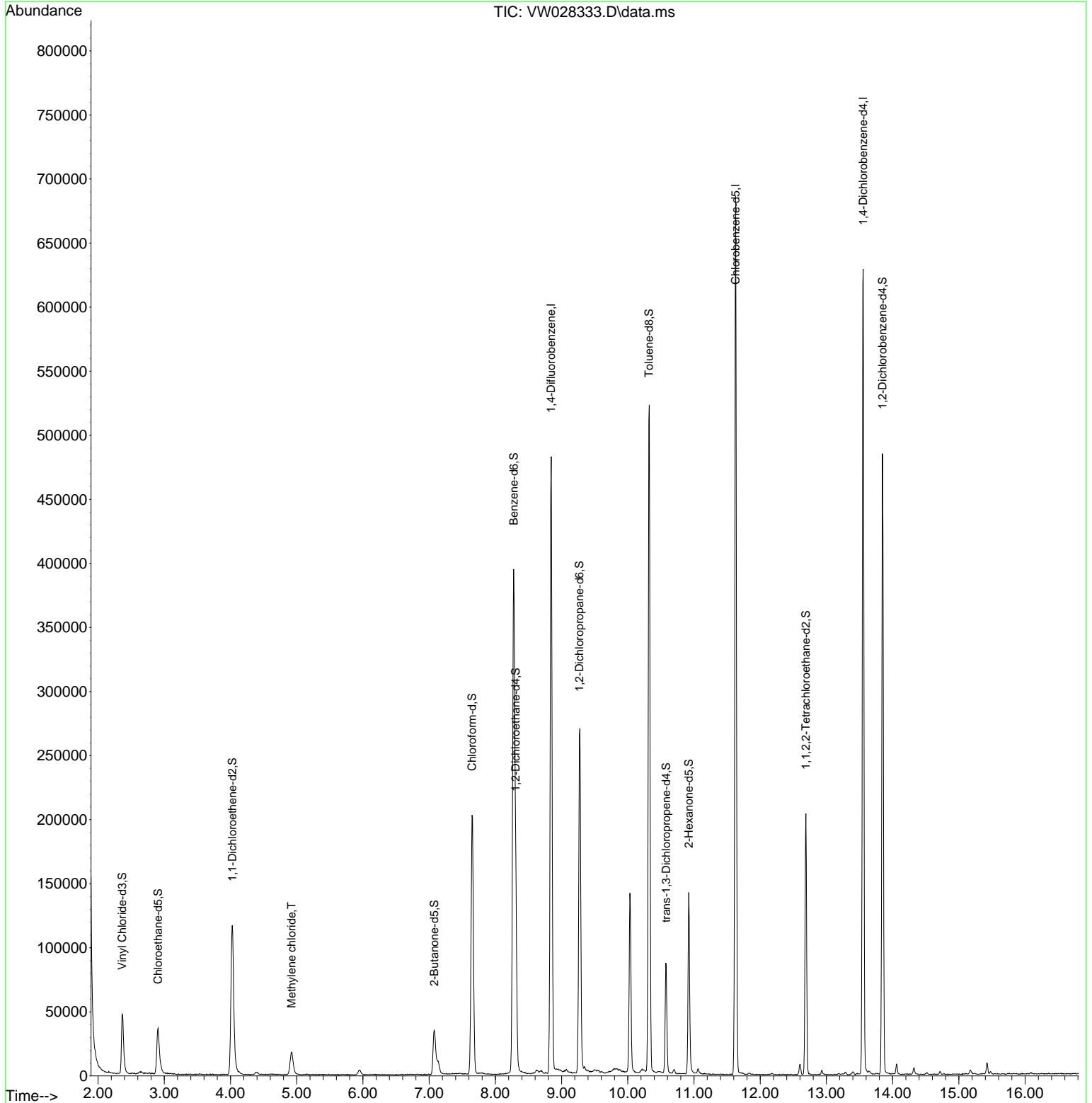
Data Path : Z:\voasrv\HPCHEM1\MSVOA_W\Data\VW040524\
 Data File : VW028333.D
 Acq On : 05 Apr 2024 12:34
 Operator : SY/MD
 Sample : P1993-14
 Misc : 3.77g/10mL/MSVOA_W/SOIL/A
 ALS Vial : 1 Sample Multiplier: 1

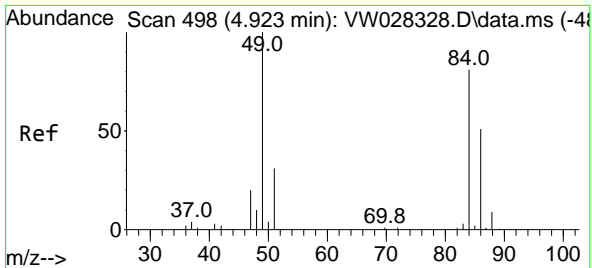
Instrument :
 MSVOA_W
 ClientSampleId :
 BH2L5

Quant Time: Apr 05 23:44:06 2024
 Quant Method : Z:\voasrv\HPCHEM1\MSVOA_W\Method\SFAMWLM031424SMA.M
 Quant Title : SFAM01.0
 QLast Update : Fri Apr 05 23:38:30 2024
 Response via : Initial Calibration

Manual Integrations
APPROVED

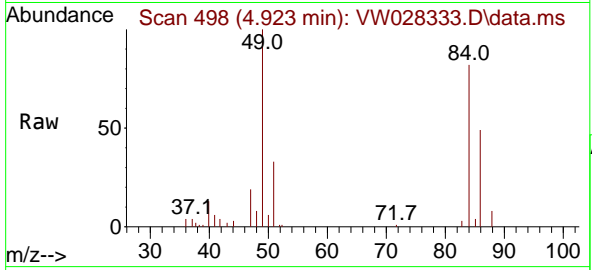
Reviewed By :Semsettin Yesilyurt 04/08/2024
 Supervised By :Mahesh Dadoda 04/08/2024





#16
 Methylene chloride
 Concen: 2.318 ug/L
 RT: 4.923 min Scan# 49
 Delta R.T. -0.000 min
 Lab File: VW028333.D
 Acq: 05 Apr 2024 12:34

Instrument : MSVOA_W
 ClientSampleId : BH2L5



Tgt Ion: 84 Resp: 1395

Ion	Ratio	Lower	Upper
84	100		
86	59.6	43.1	80.1
49	122.4	89.4	166.0

Manual Integrations
APPROVED
 Reviewed By :Semsettin Yesilyurt 04/08/2024
 Supervised By :Mahesh Dadoda 04/08/2024

