

Data Path : Z:\voasrv\HPCHEM1\MSVOA_W\Data\VW040524\
 Data File : VW028339.D
 Acq On : 05 Apr 2024 16:30
 Operator : SY/MD
 Sample : P2018-10
 Misc : 4.67g/10mL/MSVOA_W/SOIL/A
 ALS Vial : 1 Sample Multiplier: 1

Instrument :
 MSVOA_W
ClientSampleId :
 BH5F1

Manual Integrations
APPROVED
 Reviewed By :Semsettin Yesilyurt 04/08/2024
 Supervised By :Mahesh Dadoda 04/08/2024

Quant Time: Apr 06 01:09:59 2024
 Quant Method : Z:\voasrv\HPCHEM1\MSVOA_W\Method\SFAMWLM031424SMA.M
 Quant Title : SFAM01.0
 QLast Update : Fri Apr 05 23:38:30 2024
 Response via : Initial Calibration

Compound	R.T.	QIon	Response	Conc	Units	Dev(Min)
Internal Standards						
1) 1,4-Difluorobenzene	8.843	114	346907	25.000	ug/L	0.00
28) Chlorobenzene-d5	11.629	117	222565	25.000	ug/L	0.00
58) 1,4-Dichlorobenzene-d4	13.556	152	57479	25.000	ug/L	0.00
System Monitoring Compounds						
4) Vinyl Chloride-d3	2.363	65	74556	18.368	ug/L	0.00
Spiked Amount	25.000	Range 30 - 150	Recovery =	73.480%		
7) Chloroethane-d5	2.899	69	57876	20.409	ug/L	0.00
Spiked Amount	25.000	Range 30 - 150	Recovery =	81.640%		
11) 1,1-Dichloroethene-d2	4.021	65	44586	17.322	ug/L	0.00
Spiked Amount	25.000	Range 45 - 110	Recovery =	69.280%		
21) 2-Butanone-d5	7.081	46	48919	40.863	ug/L	0.00
Spiked Amount	50.000	Range 20 - 135	Recovery =	81.720%		
24) Chloroform-d	7.648	84	195449	19.107	ug/L	0.00
Spiked Amount	25.000	Range 40 - 150	Recovery =	76.440%		
26) 1,2-Dichloroethane-d4	8.307	65	97370m	17.273	ug/L	0.00
Spiked Amount	25.000	Range 70 - 130	Recovery =	69.080%#		
32) Benzene-d6	8.276	84	376594	27.714	ug/L	0.00
Spiked Amount	25.000	Range 20 - 135	Recovery =	110.840%		
36) 1,2-Dichloropropane-d6	9.276	67	110199	28.181	ug/L	0.00
Spiked Amount	25.000	Range 70 - 120	Recovery =	112.720%		
41) Toluene-d8	10.325	98	285070	22.744	ug/L	0.00
Spiked Amount	25.000	Range 30 - 130	Recovery =	90.960%		
43) trans-1,3-Dichloroprop...	10.575	79	36029	20.286	ug/L	0.00
Spiked Amount	25.000	Range 30 - 135	Recovery =	81.160%		
47) 2-Hexanone-d5	10.922	63	29519	45.668	ug/L	0.00
Spiked Amount	50.000	Range 20 - 135	Recovery =	91.340%		
56) 1,1,2,2-Tetrachloroeth...	12.690	84	48935	16.941	ug/L	0.00
Spiked Amount	25.000	Range 45 - 120	Recovery =	67.760%		
66) 1,2-Dichlorobenzene-d4	13.849	152	37614	17.964	ug/L	0.00
Spiked Amount	25.000	Range 75 - 120	Recovery =	71.840%#		
Target Compounds						
13) Acetone	4.137	43	15431	11.609	ug/L	98
16) Methylene chloride	4.923	84	17271	3.271	ug/L	99
33) Benzene	8.325	78	14021	1.024	ug/L	100
42) Toluene	10.386	91	13256	0.887	ug/L	98

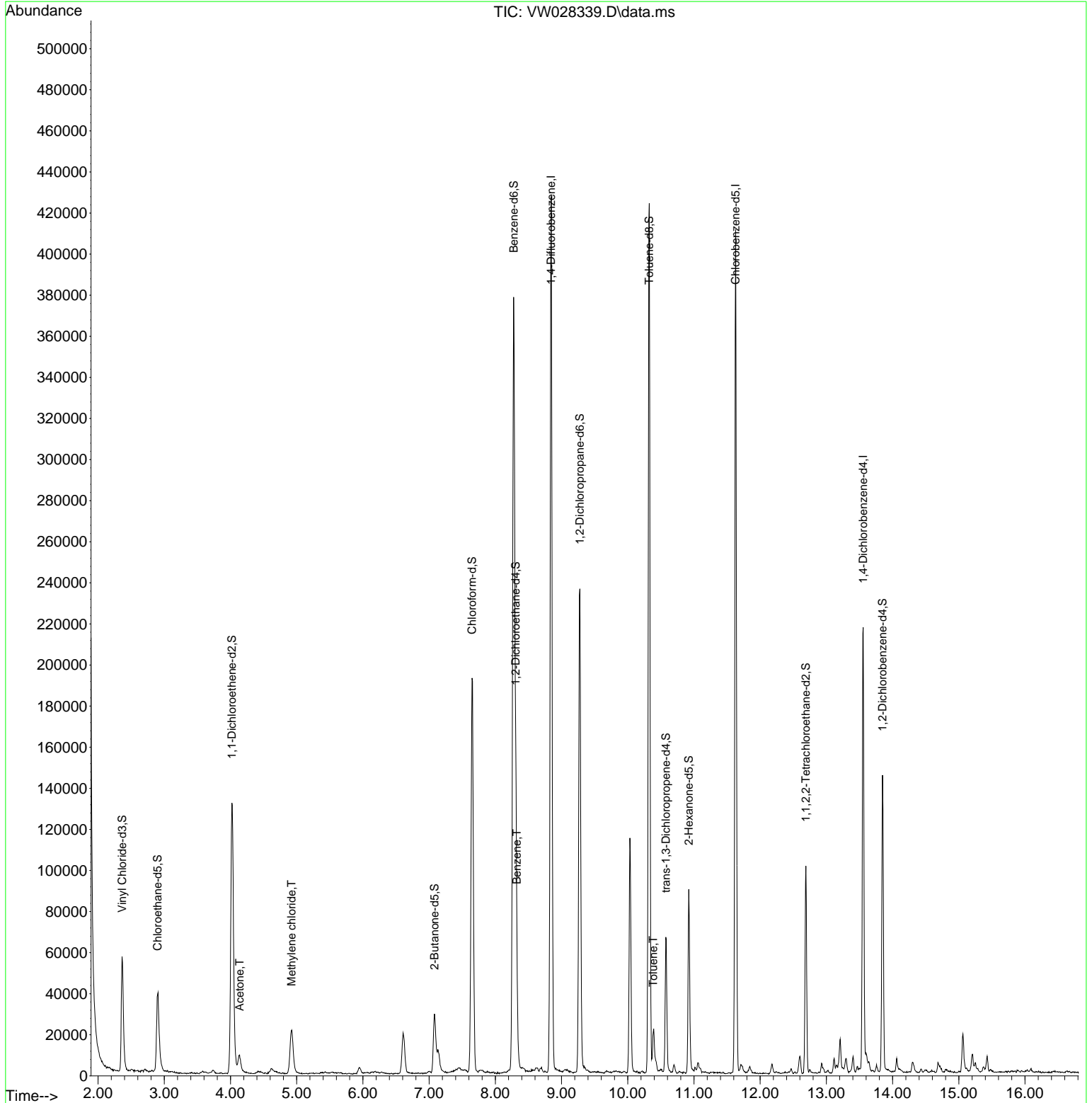
(#) = qualifier out of range (m) = manual integration (+) = signals summed

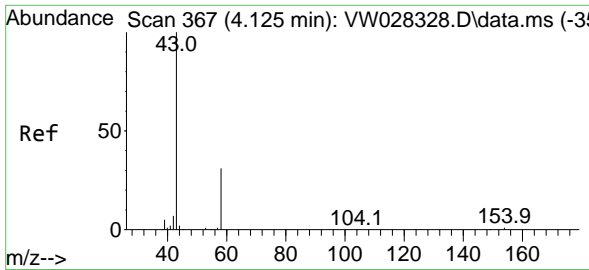
Data Path : Z:\voasrv\HPCHEM1\MSVOA_W\Data\VW040524\
 Data File : VW028339.D
 Acq On : 05 Apr 2024 16:30
 Operator : SY/MD
 Sample : P2018-10
 Misc : 4.67g/10mL/MSVOA_W/SOIL/A
 ALS Vial : 1 Sample Multiplier: 1

Instrument :
 MSVOA_W
ClientSampleId :
 BH5F1

Quant Time: Apr 06 01:09:59 2024
 Quant Method : Z:\voasrv\HPCHEM1\MSVOA_W\Method\SFAMWLM031424SMA.M
 Quant Title : SFAM01.0
 QLast Update : Fri Apr 05 23:38:30 2024
 Response via : Initial Calibration

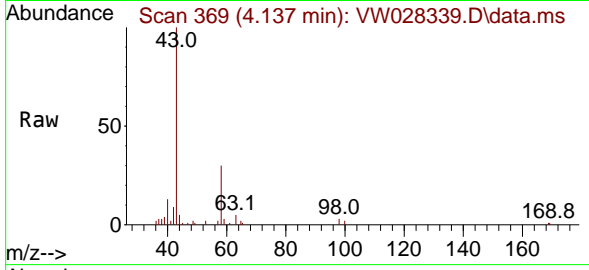
Manual Integrations
APPROVED
 Reviewed By :Semsettin Yesilyurt 04/08/2024
 Supervised By :Mahesh Dadoda 04/08/2024





#13
 Acetone
 Concen: 11.609 ug/L
 RT: 4.137 min Scan# 369
 Delta R.T. 0.012 min
 Lab File: VW028339.D
 Acq: 05 Apr 2024 16:30

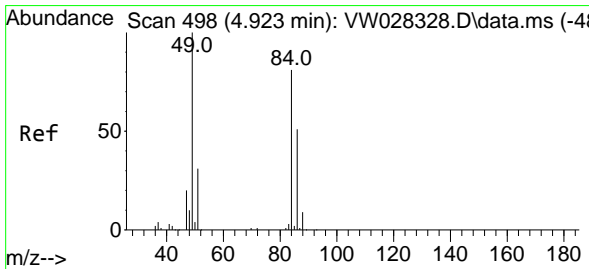
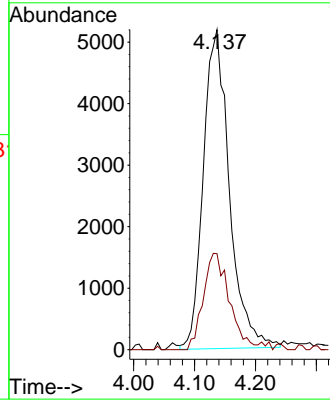
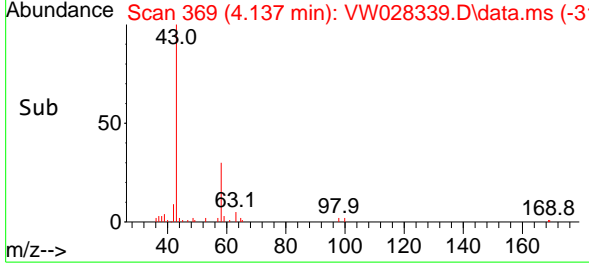
Instrument : MSVOA_W
 Client Sample Id : BH5F1



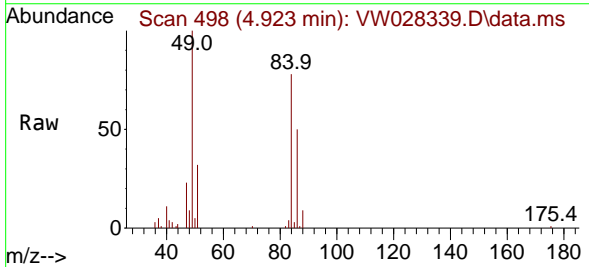
Tgt Ion: 43 Resp: 1543
 Ion Ratio Lower Upper
 43 100
 58 30.0 0.0 57.8

Manual Integrations
APPROVED

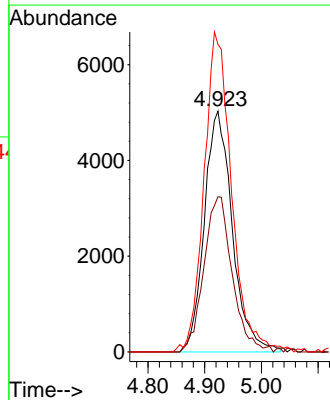
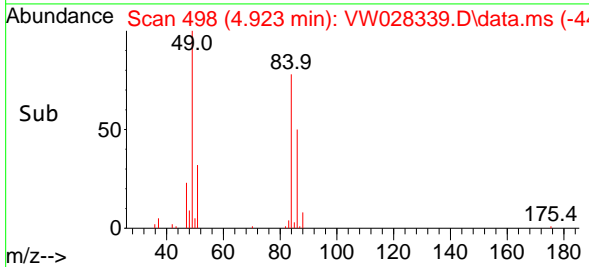
Reviewed By :Semsettin Yesilyurt 04/08/2024
 Supervised By :Mahesh Dadoda 04/08/2024

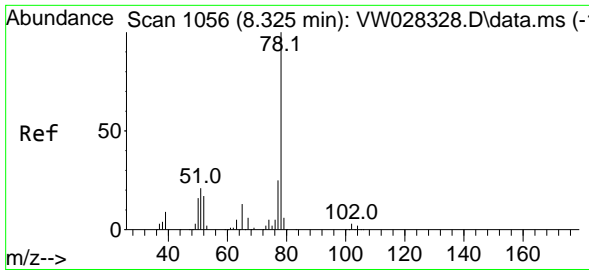


#16
 Methylene chloride
 Concen: 3.271 ug/L
 RT: 4.923 min Scan# 498
 Delta R.T. 0.000 min
 Lab File: VW028339.D
 Acq: 05 Apr 2024 16:30



Tgt Ion: 84 Resp: 17271
 Ion Ratio Lower Upper
 84 100
 86 64.4 43.1 80.1
 49 127.6 89.4 166.0





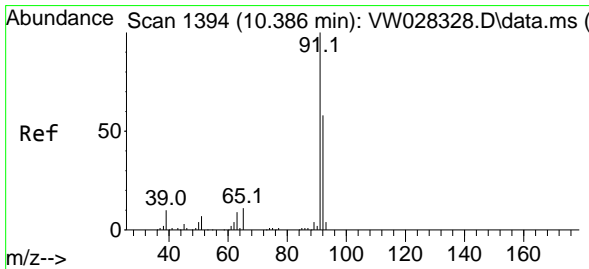
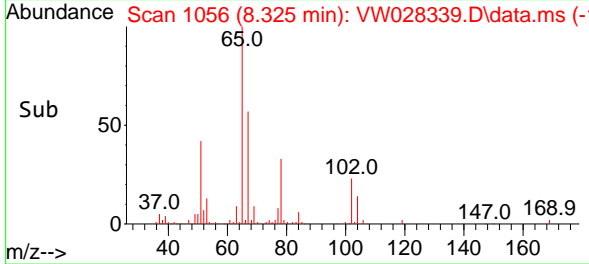
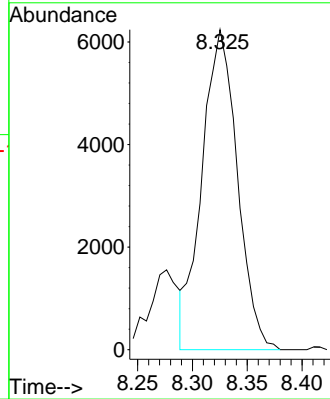
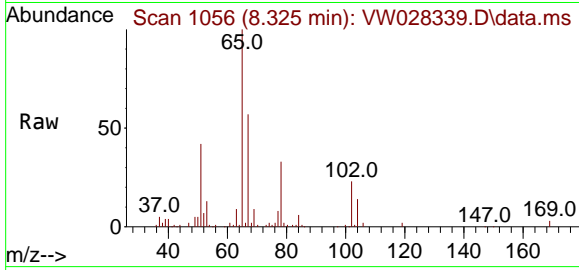
#33
Benzene
Concen: 1.024 ug/L
RT: 8.325 min Scan# 1056
Delta R.T. 0.000 min
Lab File: VW028339.D
Acq: 05 Apr 2024 16:30

Instrument : MSVOA_W
Client SampleId : BH5F1

Tgt Ion: 78 Resp: 1402

Manual Integrations
APPROVED

Reviewed By :Semsettin Yesilyurt 04/08/2024
Supervised By :Mahesh Dadoda 04/08/2024



#42
Toluene
Concen: 0.887 ug/L
RT: 10.386 min Scan# 1394
Delta R.T. 0.000 min
Lab File: VW028339.D
Acq: 05 Apr 2024 16:30

Tgt Ion: 91 Resp: 13256
Ion Ratio Lower Upper
91 100
92 59.8 40.8 75.8

