

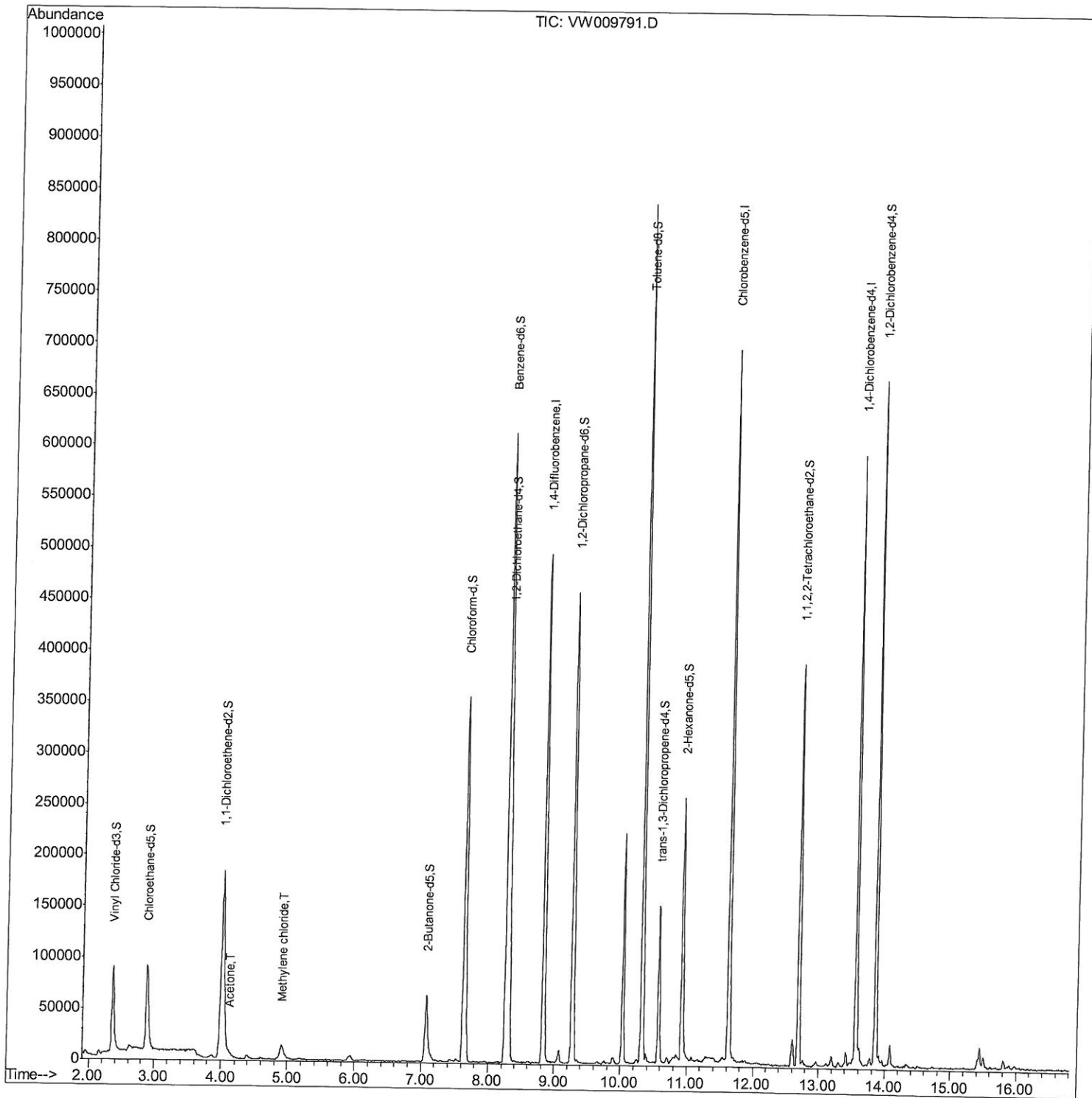
Data Path : Z:\voasrv\HPCHEM1\MSVOA\_W\Data\VW040619\  
 Data File : VW009791.D  
 Acq On : 07 Apr 2019 01:14  
 Operator : SY/VA  
 Sample : K2217-13  
 Misc : 5.00G/10ML/MSVOA\_W/SOIL  
 ALS Vial : 1 Sample Multiplier: 1

Instrument :  
 MSVOA\_W  
 Client Sampled :  
 BF603

Manual Integrations  
 APPROVED

MMDadoda  
 4/11/2019 11:43:21 AM

Quant Time: Apr 08 00:13:48 2019  
 Quant Method : Z:\VOASRV\HPCHEM1\MSVOA\_W\METHOD\SOM2WLM040319S.M  
 Quant Title : VOC Analysis  
 QLast Update : Sun Apr 07 05:36:41 2019  
 Response via : Initial Calibration



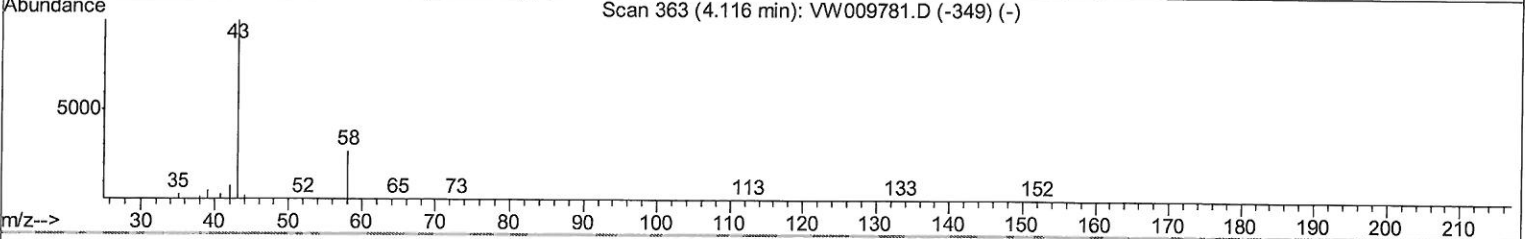
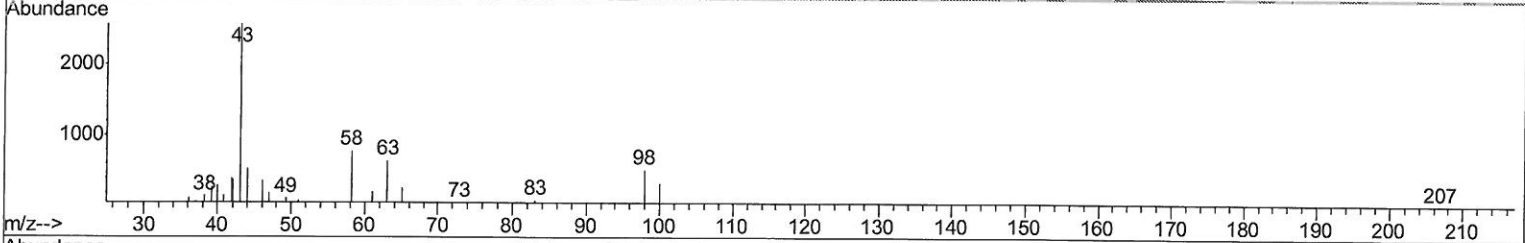
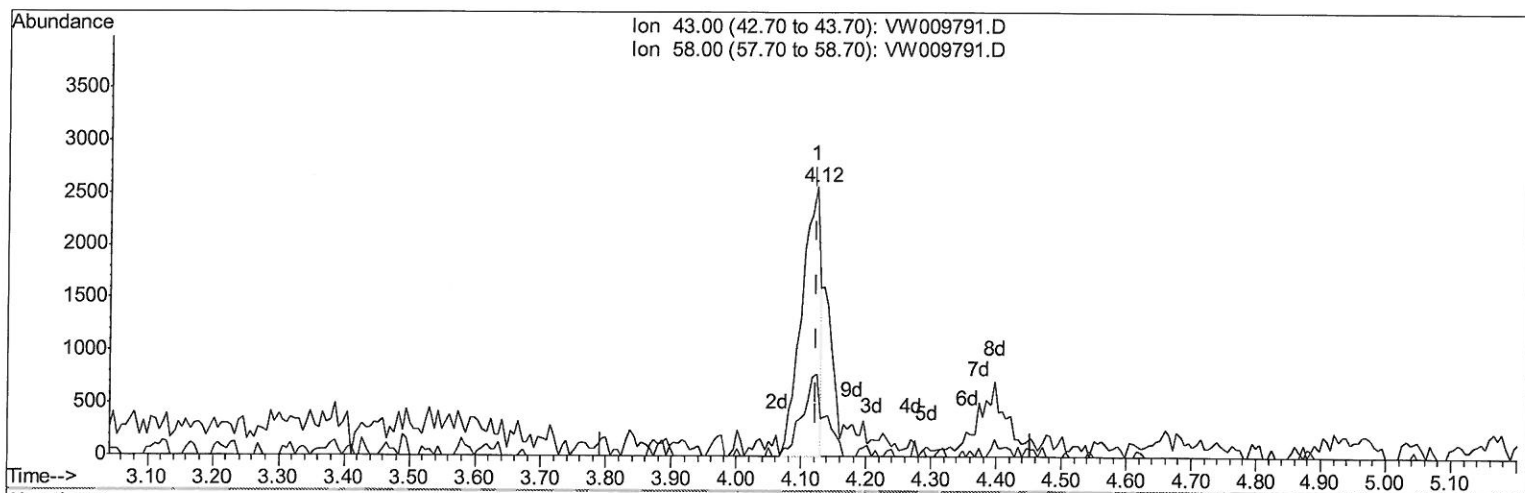
Quantitation Report (Qedit)

Data Path : Z:\voasrv\HPCHEM1\MSVOA\_W\Data\VW040619\  
 Data File : VW009791.D  
 Acq On : 07 Apr 2019 01:14  
 Operator : SY/VA  
 Sample : K2217-13  
 Misc : 5.00G/10ML/MSVOA\_W/SOIL  
 ALS Vial : 1 Sample Multiplier: 1

**Instrument :**  
 MSVOA\_W  
**ClientSampled :**  
 BF603

**Manual Integrations**  
**APPROVED**  
 MMDadoda  
 4/11/2019 11:43:21 AM

Quant Time: Apr 07 05:40:11 2019  
 Quant Method : Z:\VOASRV\HPCHEM1\MSVOA\_W\METHOD\SOM2WLM040319S.M  
 Quant Title : VOC Analysis  
 QLast Update : Sun Apr 07 05:36:41 2019  
 Response via : Initial Calibration



TIC: VW009791.D

(13) Acetone (T)  
 4.123min (+0.000) 3.01ug/L  
 response 5149

Ion	Exp%	Act%
43.00	100	100
58.00	26.50	25.64
0.00	0.00	0.00
0.00	0.00	0.00

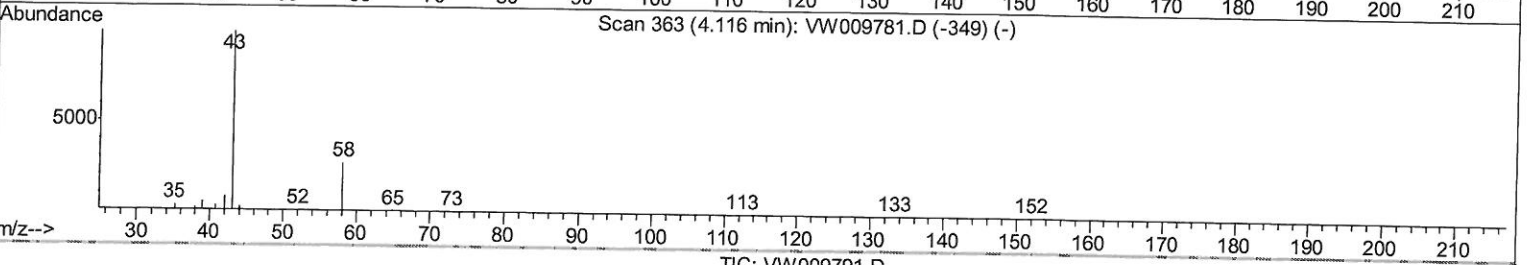
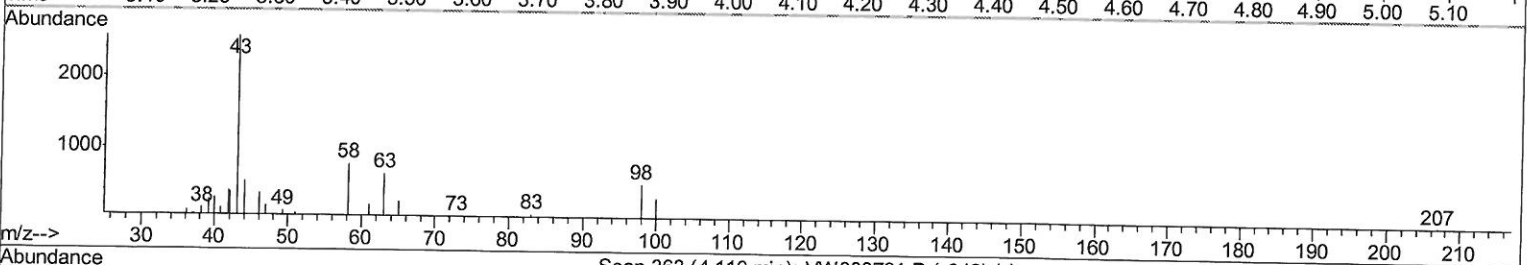
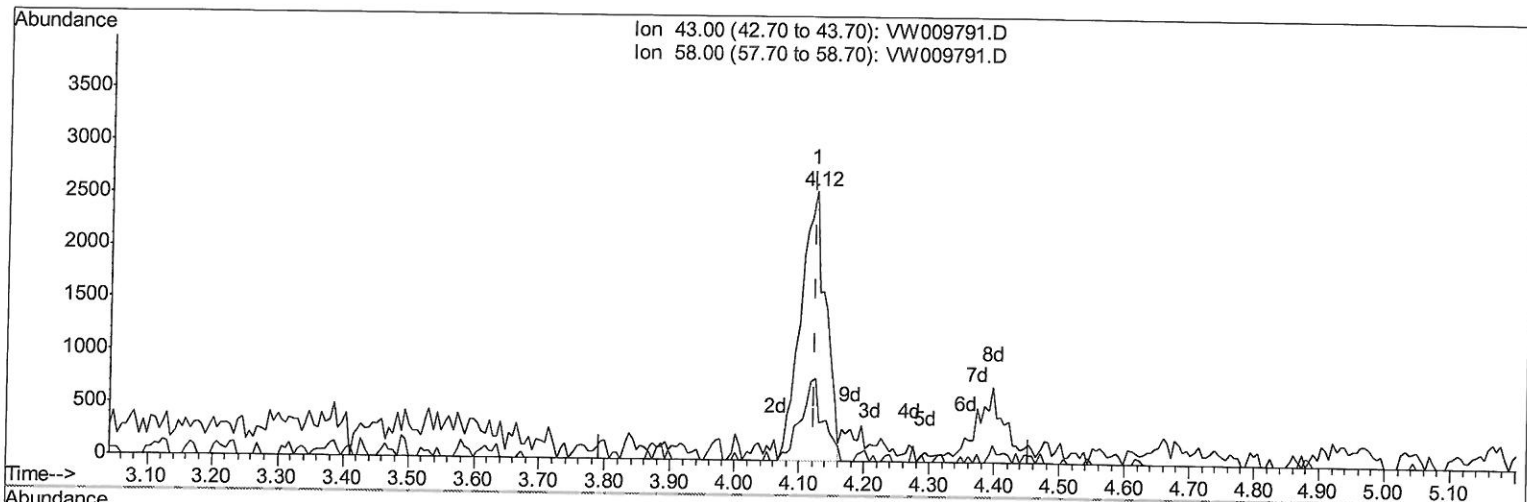
Quantitation Report (Qedit)

Data Path : Z:\voasrv\HPCHEM1\MSVOA\_W\Data\VW040619\  
 Data File : VW009791.D  
 Acq On : 07 Apr 2019 01:14  
 Operator : SY/VA  
 Sample : K2217-13  
 Misc : 5.00G/10ML/MSVOA\_W/SOIL  
 ALS Vial : 1 Sample Multiplier: 1

**Instrument :**  
 MSVOA\_W  
**Client Sampled :**  
 BF603

**Manual Integrations**  
**APPROVED**  
 MMDadoda  
 4/11/2019 11:43:21 AM

Quant Time: Apr 07 05:40:11 2019  
 Quant Method : Z:\VOASRV\HPCHEM1\MSVOA\_W\METHOD\SOM2WLM040319S.M  
 Quant Title : VOC Analysis  
 QLast Update : Sun Apr 07 05:36:41 2019  
 Response via : Initial Calibration



TIC: VW009791.D

(13) Acetone (T)  
 4.123min (+0.000) 4.04ug/L m  
 response 6902

*Handwritten:* → MLD  
 4/9/19

Ion	Exp%	Act%
43.00	100	100
58.00	26.50	19.12
0.00	0.00	0.00
0.00	0.00	0.00

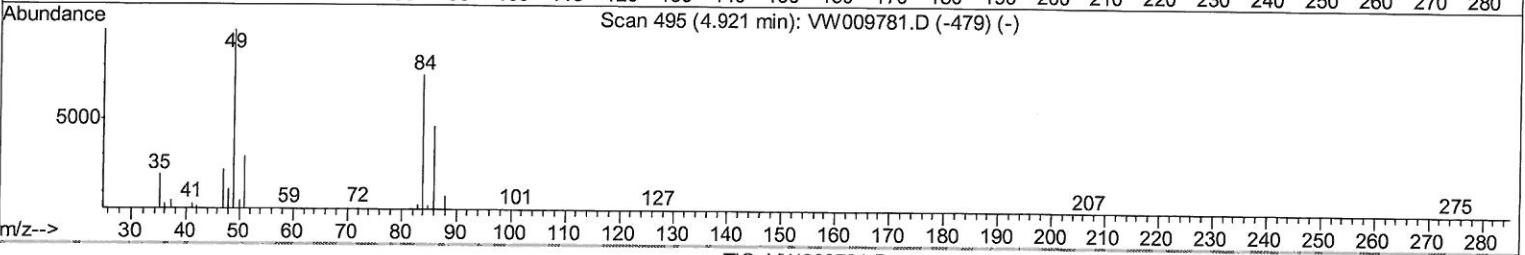
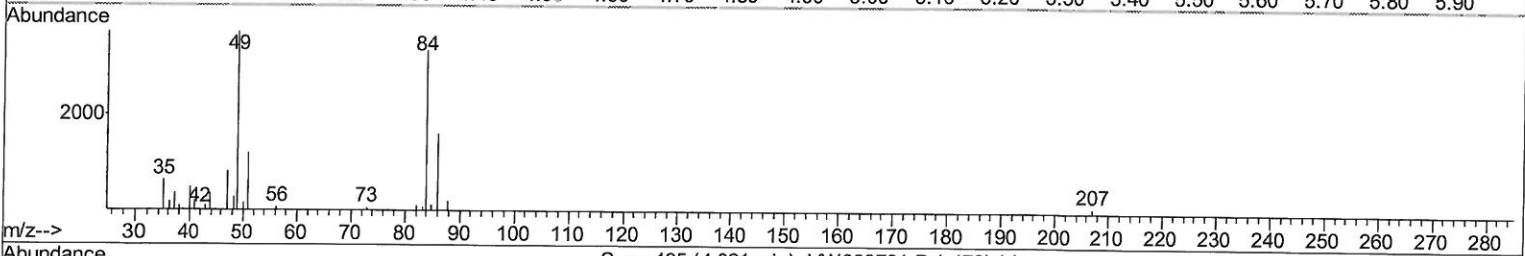
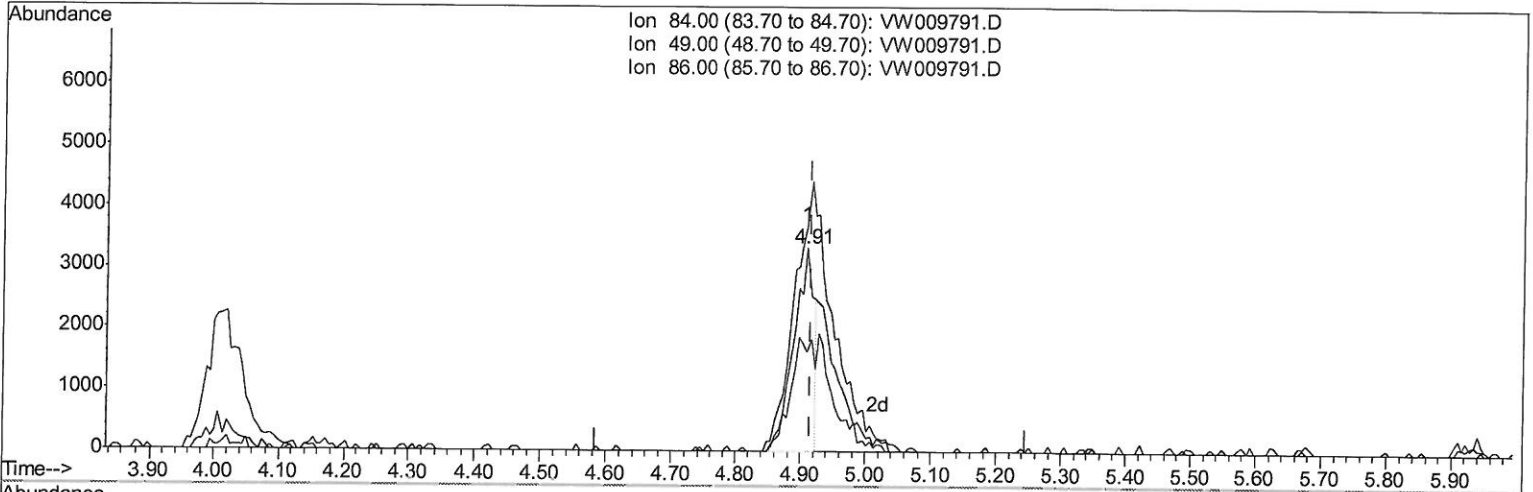
Quantitation Report (Qedit)

Data Path : Z:\voasrv\HPCHEM1\MSVOA\_W\Data\VW040619\  
 Data File : VW009791.D  
 Acq On : 07 Apr 2019 01:14  
 Operator : SY/VA  
 Sample : K2217-13  
 Misc : 5.00G/10ML/MSVOA\_W/SOIL  
 ALS Vial : 1 Sample Multiplier: 1

**Instrument :**  
 MSVOA\_W  
**ClientSampled :**  
 BF603

**Manual Integrations**  
**APPROVED**  
 MMDadoda  
 4/11/2019 11:43:21 AM

Quant Time: Apr 07 05:40:11 2019  
 Quant Method : Z:\VOASRV\HPCHEM1\MSVOA\_W\METHOD\SOM2WLM040319S.M  
 Quant Title : VOC Analysis  
 QLast Update : Sun Apr 07 05:36:41 2019  
 Response via : Initial Calibration



TIC: VW009791.D

(16) Methylene chloride (T)

4.909min (-0.006) 1.08ug/L

response 7122

Ion	Exp%	Act%
84.00	100	100
49.00	140.40	111.24
86.00	66.30	48.92
0.00	0.00	0.00



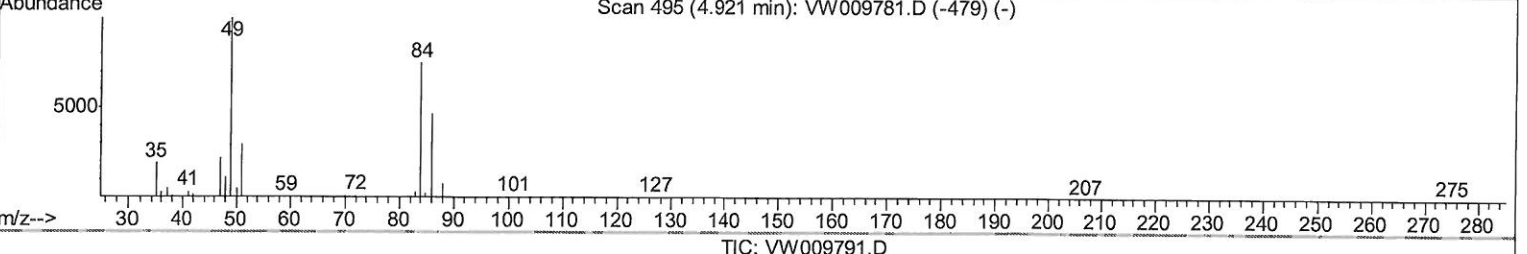
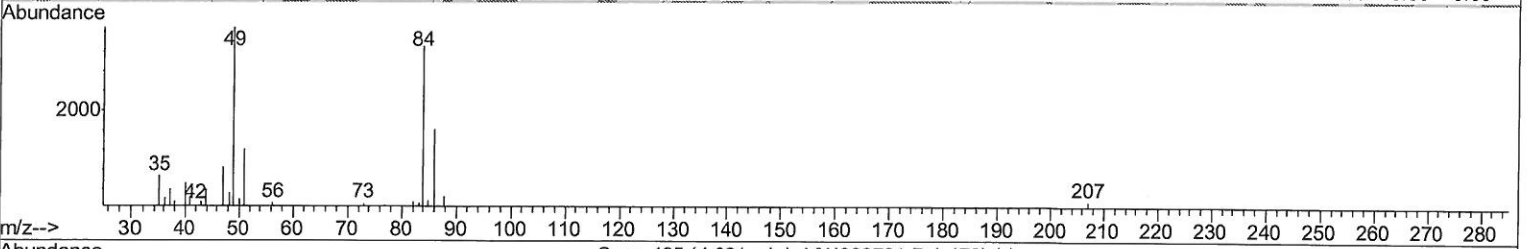
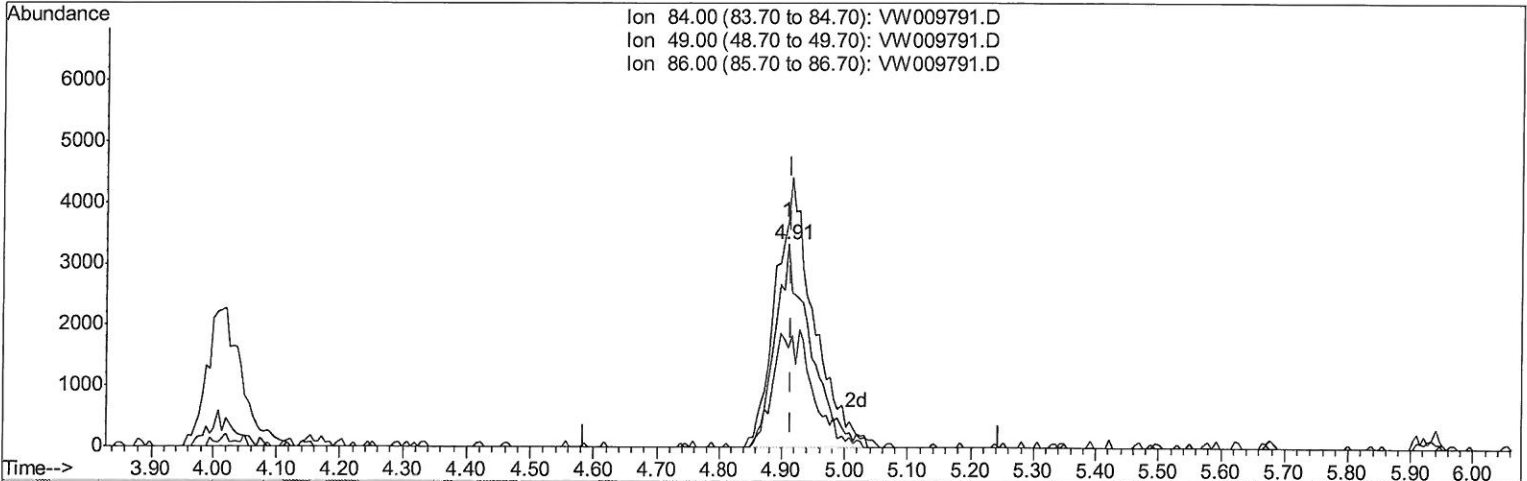
Quantitation Report (Qedit)

Data Path : Z:\voasrv\HPCHEM1\MSVOA\_W\Data\VW040619\  
 Data File : VW009791.D  
 Acq On : 07 Apr 2019 01:14  
 Operator : SY/VA  
 Sample : K2217-13  
 Misc : 5.00G/10ML/MSVOA\_W/SOIL  
 ALS Vial : 1 Sample Multiplier: 1

Instrument :  
 MSVOA\_W  
 ClientSampled :  
 BF603

Manual Integrations  
**APPROVED**  
 MMDadoda  
 4/11/2019 11:43:21 AM

Quant Time: Apr 07 05:40:11 2019  
 Quant Method : Z:\VOASRV\HPCHEM1\MSVOA\_W\METHOD\SOM2WLM040319S.M  
 Quant Title : VOC Analysis  
 QLast Update : Sun Apr 07 05:36:41 2019  
 Response via : Initial Calibration



TIC: VW009791.D

(16) Methylene chloride (T)  
 4.909min (-0.006) 1.95ug/L m  
 response 12911

*Handwritten:*  
 7MB  
 4/9/19

Ion	Exp%	Act%
84.00	100	100
49.00	140.40	111.24
86.00	66.30	48.92
0.00	0.00	0.00

Data Path : Z:\voasrv\HPCHEM1\MSVOA\_W\Data\VW040619\  
 Data File : VW009791.D  
 Acq On : 07 Apr 2019 01:14  
 Operator : SY/VA  
 Sample : K2217-13  
 Misc : 5.00G/10ML/MSVOA\_W/SOIL  
 ALS Vial : 1 Sample Multiplier: 1

**Instrument :**  
 MSVOA\_W  
**Client Sampled :**  
 BF603

**Manual Integrations**  
**APPROVED**  
 MMDadoda  
 4/11/2019 11:43:21 AM

Quant Time: Apr 08 00:13:48 2019  
 Quant Method : Z:\VOASRV\HPCHEM1\MSVOA\_W\METHOD\SOM2WLM040319S.M  
 Quant Title : VOC Analysis  
 QLast Update : Sun Apr 07 05:36:41 2019  
 Response via : Initial Calibration

Internal Standards	R.T.	QIon	Response	Conc	Units	Dev (Min)
1) 1,4-Difluorobenzene	8.84	114	375264	25.00	ug/L	0.00
28) Chlorobenzene-d5	11.63	117	353954	25.00	ug/L	0.00
60) 1,4-Dichlorobenzene-d4	13.56	152	138328	25.00	ug/L	0.00

System Monitoring Compounds	R.T.	QIon	Response	Conc	Units	Dev (Min)
4) Vinyl Chloride-d3	2.36	65	127784	26.02	ug/L	0.00
Spiked Amount 25.000	Range 30 - 150		Recovery =	104.08%		
7) Chloroethane-d5	2.89	69	126764	28.18	ug/L	0.00
Spiked Amount 25.000	Range 30 - 150		Recovery =	112.72%		
10) 1,1-Dichloroethene-d2	4.01	63	227844	21.57	ug/L	0.00
Spiked Amount 25.000	Range 45 - 110		Recovery =	86.28%		
20) 2-Butanone-d5	7.07	46	109426	68.63	ug/L	0.00
Spiked Amount 50.000	Range 20 - 135		Recovery =	137.26%#		
24) Chloroform-d	7.64	84	323312	31.57	ug/L	0.00
Spiked Amount 25.000	Range 40 - 150		Recovery =	126.28%		
26) 1,2-Dichloroethane-d4	8.30	65	221413	35.22	ug/L	0.00
Spiked Amount 25.000	Range 70 - 130		Recovery =	140.88%#		
29) Benzene-d6	8.27	84	590593	31.79	ug/L	0.00
Spiked Amount 25.000	Range 20 - 135		Recovery =	127.16%		
33) 1,2-Dichloropropane-d6	9.27	67	192764	33.59	ug/L	0.00
Spiked Amount 25.000	Range 70 - 120		Recovery =	134.36%#		
37) Toluene-d8	10.32	98	511820	29.79	ug/L	0.00
Spiked Amount 25.000	Range 30 - 130		Recovery =	119.16%		
38) trans-1,3-Dichloropropene-	10.58	79	77028	28.14	ug/L	0.00
Spiked Amount 25.000	Range 30 - 135		Recovery =	112.56%		
39) 2-Hexanone-d5	10.93	63	68145	63.00	ug/L	0.00
Spiked Amount 50.000	Range 20 - 135		Recovery =	126.00%		
48) 1,1,2,2-Tetrachloroethane-	12.69	84	171876	32.21	ug/L	0.00
Spiked Amount 25.000	Range 45 - 120		Recovery =	128.84%#		
61) 1,2-Dichlorobenzene-d4	13.86	152	164724	33.94	ug/L	0.00
Spiked Amount 25.000	Range 75 - 120		Recovery =	135.76%#		

Target Compounds	R.T.	QIon	Response	Conc	Units	Qvalue
13) Acetone	4.12	43	6902m	4.040	ug/L	
16) Methylene chloride	4.91	84	12911m	1.951	ug/L	

*Handwritten:* 7 mD  
4/9/19

(#) = qualifier out of range (m) = manual integration (+) = signals summed