

Data Path : Z:\VOASRV\HPCHEM1\MSVOA W\DATA\VW040819\  
 Data File : VW009863.D  
 Acq On : 10 Apr 2019 05:33  
 Operator : SY/VA  
 Sample : K2278-06  
 Misc : 3.86G/10ML/MSVOA W/SOIL  
 ALS Vial : 2 Sample Multiplier: 1

**Instrument :**  
 MSVOA\_W  
**ClientSampled :**  
 DB6X3

**Manual Integrations**  
**APPROVED**  
 MMDadoda  
 4/11/2019 2:06:38 PM

Quant Time: Apr 10 06:45:19 2019  
 Quant Method : Z:\VOASRV\HPCHEM1\MSVOA\_W\METHOD\SOM2WLM040319S.M  
 Quant Title : VOC Analysis  
 QLast Update : Wed Apr 10 06:04:24 2019  
 Response via : Initial Calibration

Internal Standards	R.T.	QIon	Response	Conc	Units	Dev(Min)
1) 1,4-Difluorobenzene	8.84	114	477409	25.00	ug/L	0.00
28) Chlorobenzene-d5	11.63	117	482307	25.00	ug/L	0.00
60) 1,4-Dichlorobenzene-d4	13.56	152	204539	25.00	ug/L	0.00

System Monitoring Compounds

4) Vinyl Chloride-d3	2.36	65	106117	16.99	ug/L	0.00
Spiked Amount	25.000	Range	30 - 150	Recovery	=	67.96%
7) Chloroethane-d5	2.89	69	108879	19.02	ug/L	0.00
Spiked Amount	25.000	Range	30 - 150	Recovery	=	76.08%
10) 1,1-Dichloroethene-d2	4.01	63	204951	15.25	ug/L	0.00
Spiked Amount	25.000	Range	45 - 110	Recovery	=	61.00%
20) 2-Butanone-d5	7.08	46	123889	61.08	ug/L	0.00
Spiked Amount	50.000	Range	20 - 135	Recovery	=	122.16%
24) Chloroform-d	7.65	84	331960	25.48	ug/L	0.00
Spiked Amount	25.000	Range	40 - 150	Recovery	=	101.92%
26) 1,2-Dichloroethane-d4	8.30	65	218970	27.38	ug/L	0.00
Spiked Amount	25.000	Range	70 - 130	Recovery	=	109.52%
29) Benzene-d6	8.27	84	583918	23.06	ug/L	0.00
Spiked Amount	25.000	Range	20 - 135	Recovery	=	92.24%
33) 1,2-Dichloropropane-d6	9.27	67	193816	24.78	ug/L	0.00
Spiked Amount	25.000	Range	70 - 120	Recovery	=	99.12%
37) Toluene-d8	10.32	98	503700	21.52	ug/L	0.00
Spiked Amount	25.000	Range	30 - 130	Recovery	=	86.08%
38) trans-1,3-Dichloropropene-	10.58	79	80728	21.64	ug/L	0.00
Spiked Amount	25.000	Range	30 - 135	Recovery	=	86.56%
39) 2-Hexanone-d5	10.93	63	81269	55.14	ug/L	0.00
Spiked Amount	50.000	Range	20 - 135	Recovery	=	110.28%
48) 1,1,2,2-Tetrachloroethane-	12.69	84	192533	26.48	ug/L	0.00
Spiked Amount	25.000	Range	45 - 120	Recovery	=	105.92%
61) 1,2-Dichlorobenzene-d4	13.86	152	194322	27.07	ug/L	0.00
Spiked Amount	25.000	Range	75 - 120	Recovery	=	108.28%

Target Compounds					Ovalue
13) Acetone	4.12	43	7467	3.436 ug/L	95
16) Methylene chloride	4.92	84	15936m	1.893 ug/L	

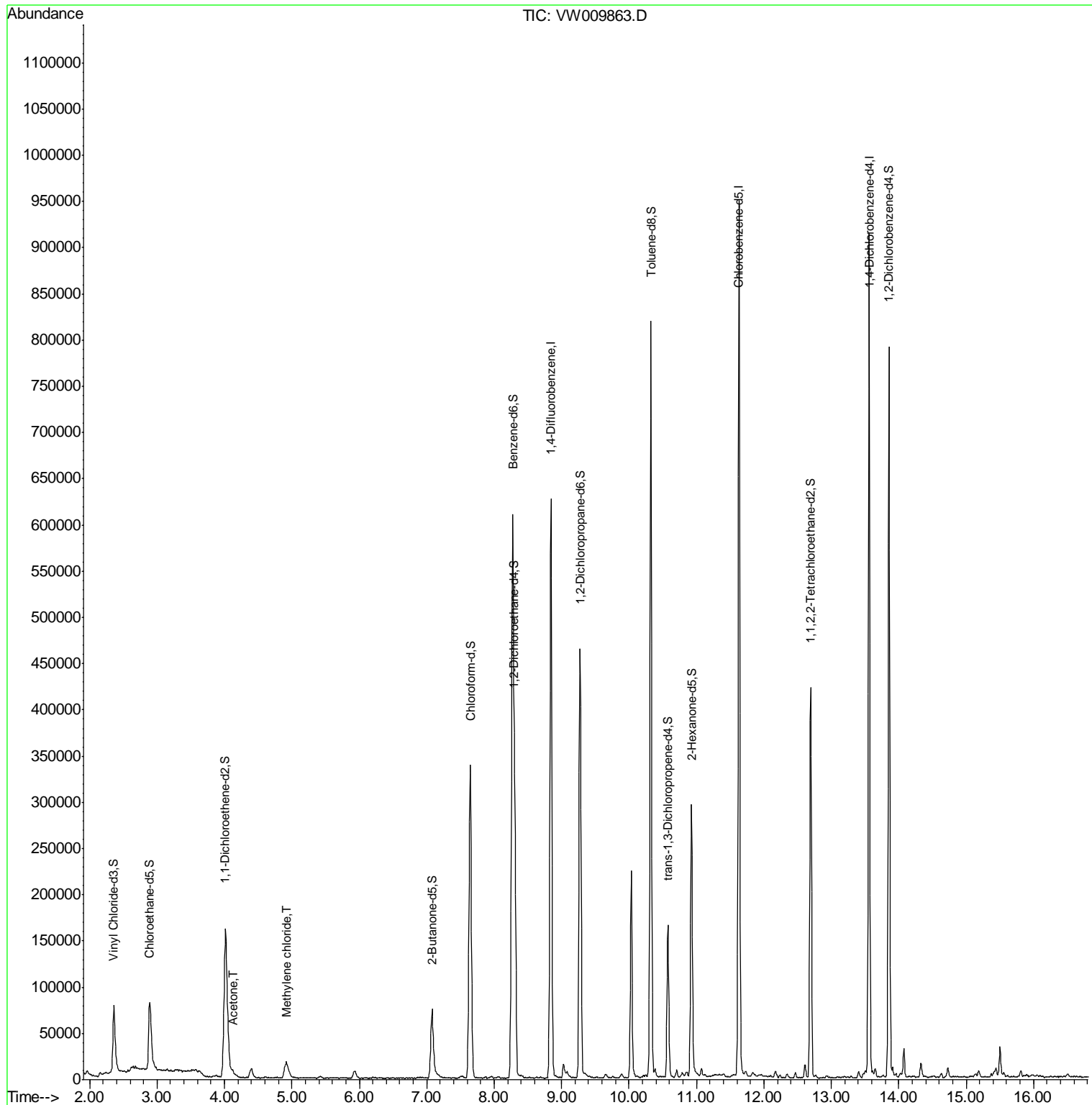
(#) = qualifier out of range (m) = manual integration (+) = signals summed

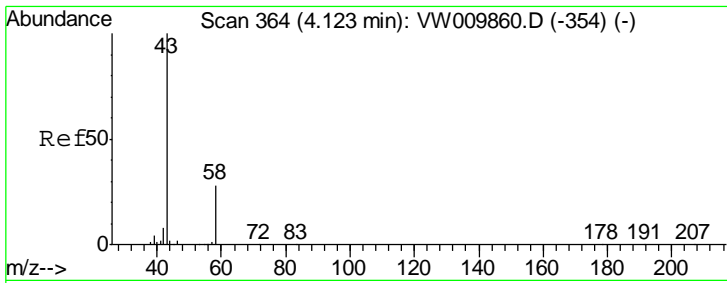
Data Path : Z:\VOASRV\HPCHEM1\MSVOA W\DATA\VW040819\  
 Data File : VW009863.D  
 Acq On : 10 Apr 2019 05:33  
 Operator : SY/VA  
 Sample : K2278-06  
 Misc : 3.86G/10ML/MSVOA W/SOIL  
 ALS Vial : 2 Sample Multiplier: 1

**Instrument :**  
 MSVOA\_W  
**Client Sampled :**  
 DB6X3

**Manual Integrations**  
**APPROVED**  
 MMDadoda  
 4/11/2019 2:06:38 PM

Quant Time: Apr 10 06:45:19 2019  
 Quant Method : Z:\VOASRV\HPCHEM1\MSVOA\_W\METHOD\SOM2WLM040319S.M  
 Quant Title : VOC Analysis  
 QLast Update : Wed Apr 10 06:04:24 2019  
 Response via : Initial Calibration





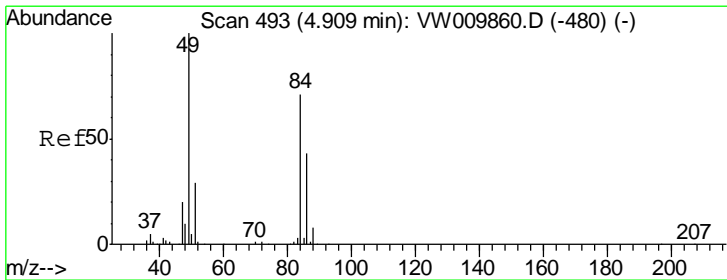
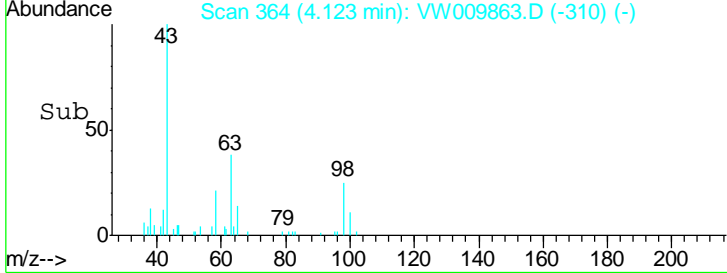
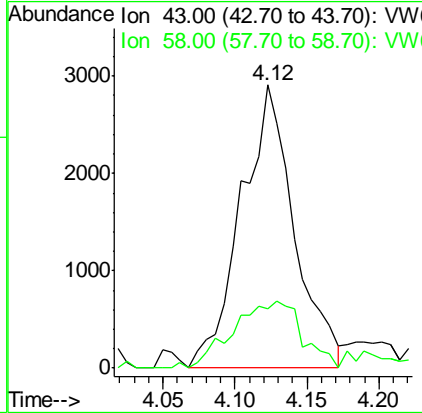
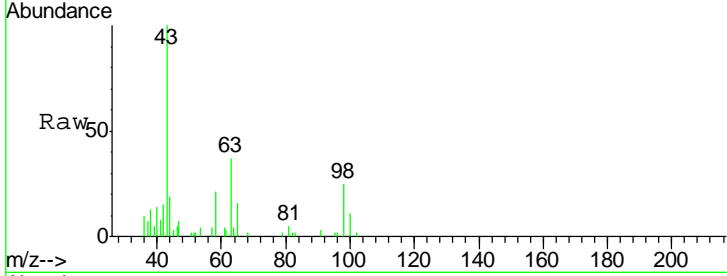
#13  
 Acetone  
 Concen: 3.436 ug/L  
 RT: 4.12 min Scan# 364  
 Delta R.T. 0.00 min  
 Lab File: VW009863.D  
 Acq: 10 Apr 2019 05:33

Instrument : MSVOA\_W  
 ClientSampled : DB6X3

Tgt Ion	Ratio	Lower	Upper
43	100		
58	23.7	0.0	53.0

Manual Integrations  
 APPROVED

MMDadoda  
 4/11/2019 2:06:38 PM



#16  
 Methylene chloride  
 Concen: 1.893 ug/L m  
 RT: 4.92 min Scan# 494  
 Delta R.T. 0.00 min  
 Lab File: VW009863.D  
 Acq: 10 Apr 2019 05:33

Tgt Ion	Ratio	Lower	Upper
84	100		
49	120.1	98.3	182.5
86	67.3	46.4	86.2

