

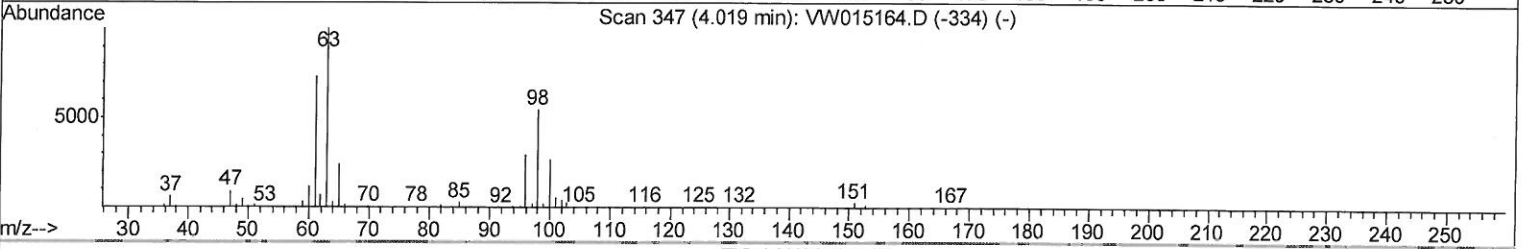
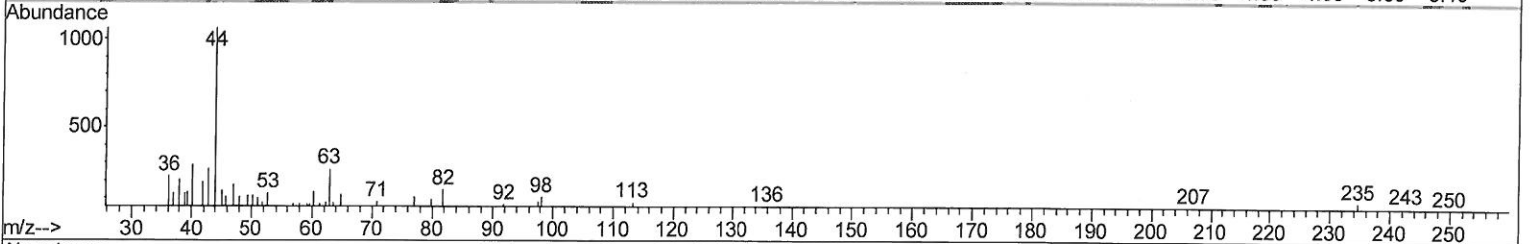
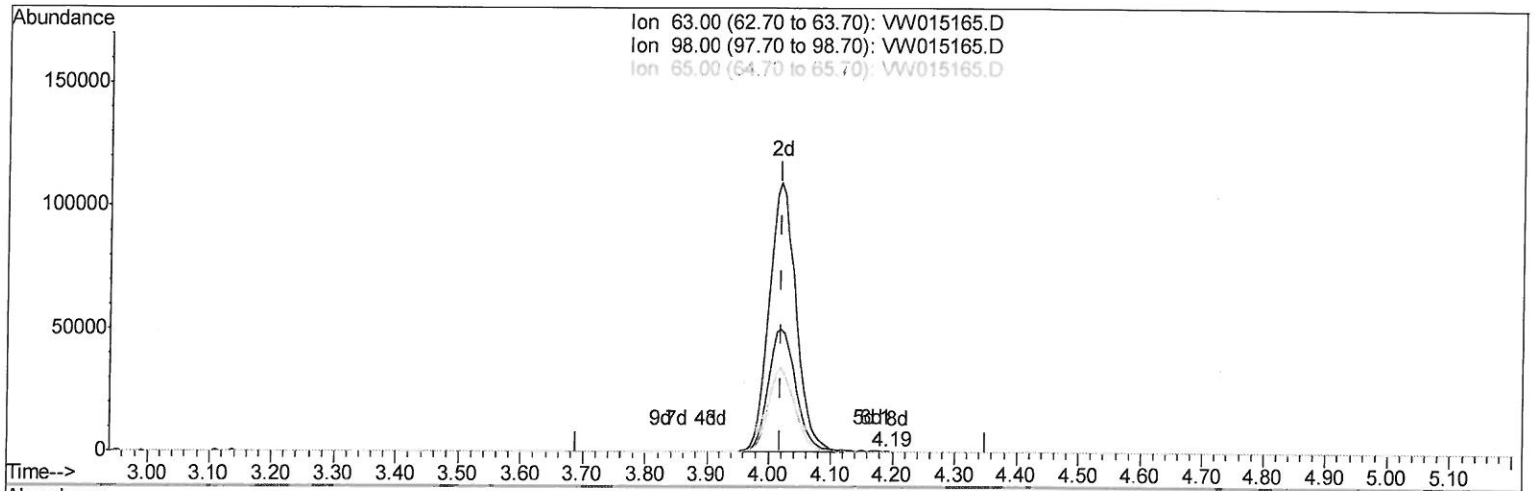
Quantitation Report (Qedit)

Data Path : Z:\VOASRV\HPCHEM1\MSVOA W\DATA\VW040820\
 Data File : VW015165.D
 Acq On : 08 Apr 2020 10:20
 Operator : SY/VA
 Sample : VW0408SBL01
 Misc : 5.00G/10ML/MSVOA W/SOIL
 ALS Vial : 4 Sample Multiplier: 1

Instrument :
 MSVOA_W
ClientSampled :
 VBLK18

Manual Integrations
APPROVED
 MMDadoda
 4/10/2020 3:01:47 PM

Quant Time: Apr 09 01:20:48 2020
 Quant Method : Z:\VOASRV\HPCHEM1\MSVOA_W\METHOD\SOM2WLM032520S.M
 Quant Title : VOC Analysis
 QLast Update : Thu Apr 09 01:17:46 2020
 Response via : Initial Calibration



TIC: VW015165.D

(10) 1,1-Dichloroethene-d2 (S)

4.190min (+0.171) 0.01ug/L

response 208

Ion	Exp%	Act%
63.00	100	100
98.00	63.40	65.87
65.00	21.50	21.63
0.00	0.00	0.00

Quantitation Report (Qedit)

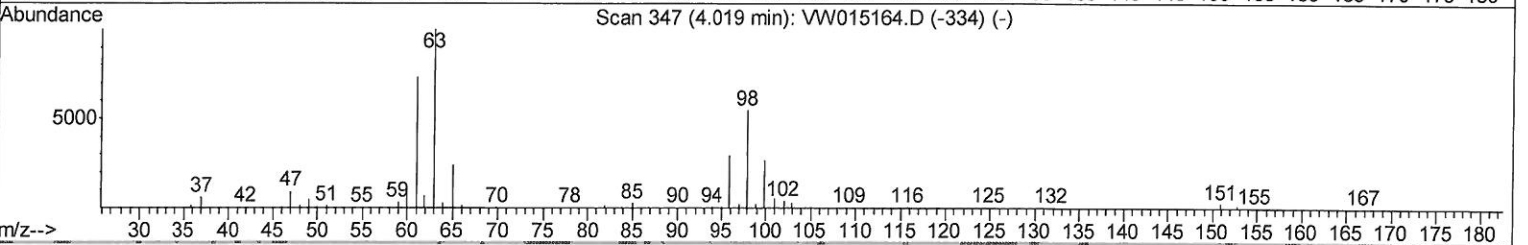
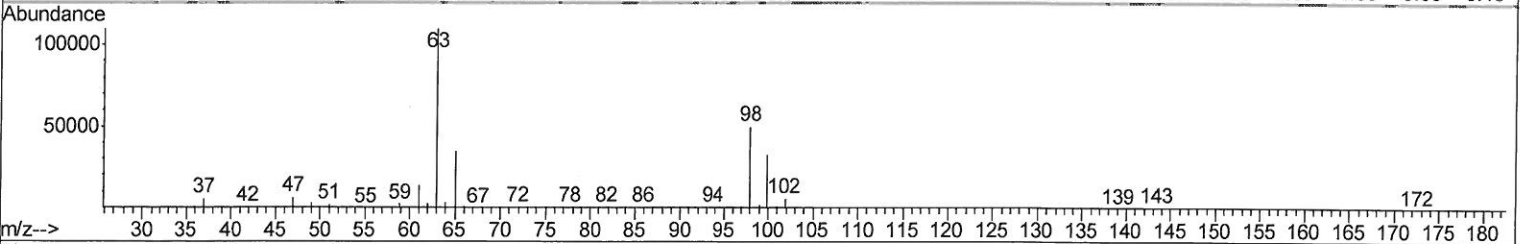
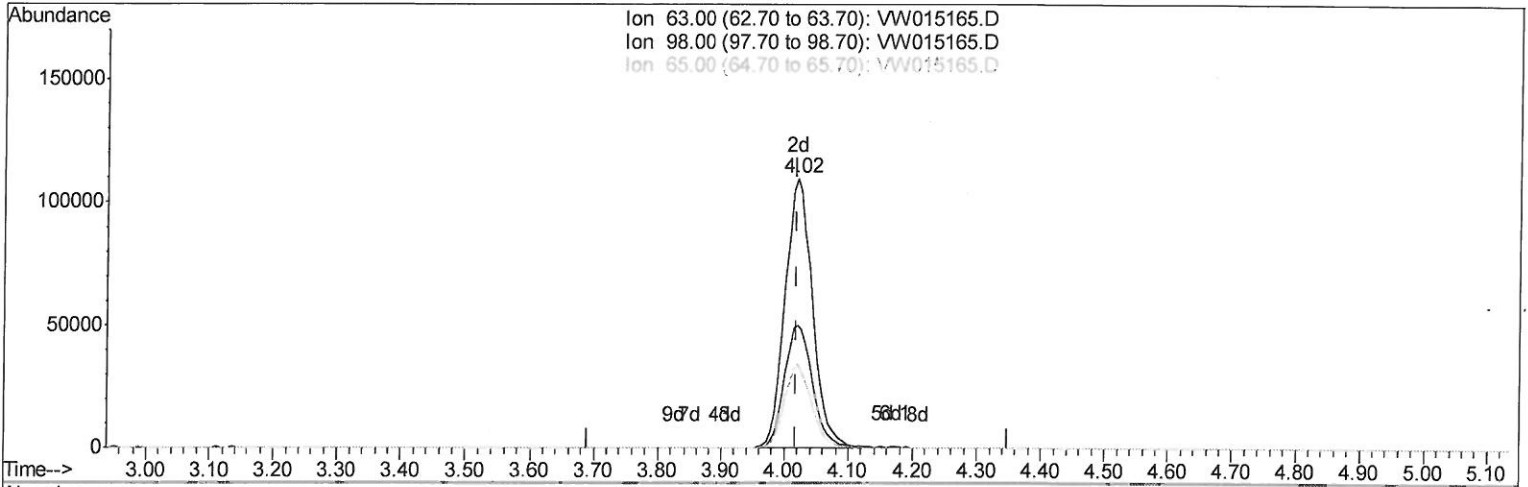
Data Path : Z:\VOASRV\HPCHEM1\MSVOA W\DATA\VW040820\
 Data File : VW015165.D
 Acq On : 08 Apr 2020 10:20
 Operator : SY/VA
 Sample : VW0408SBL01
 Misc : 5.00G/10ML/MSVOA W/SOIL
 ALS Vial : 4 Sample Multiplier: 1

Instrument :
 MSVOA_W
Client Sampled :
 VBLK18

Manual Integrations
APPROVED

MMDadoda
 4/10/2020 3:01:47 PM

Quant Time: Apr 09 01:20:48 2020
 Quant Method : Z:\VOASRV\HPCHEM1\MSVOA_W\METHOD\SOM2WLM032520S.M
 Quant Title : VOC Analysis
 QLast Update : Thu Apr 09 01:17:46 2020
 Response via : Initial Calibration



TIC: VW015165.D

(10) 1,1-Dichloroethene-d2 (S)

4.019min (+0.000) 16.71ug/L m

04/10/2020

response 327878

Ion	Exp%	Act%
63.00	100	100
98.00	63.40	0.04#
65.00	21.50	0.01#
0.00	0.00	0.00

Data Path : Z:\VOASRV\HPCHEM1\MSVOA W\DATA\VW040820\
 Data File : VW015165.D
 Acq On : 08 Apr 2020 10:20
 Operator : SY/VA
 Sample : VW0408SBL01
 Misc : 5.00G/10ML/MSVOA W/SOIL
 ALS Vial : 4 Sample Multiplier: 1

Instrument :
 MSVOA_W
ClientSampled :
 VBLK18

Manual Integrations
APPROVED
 MMDadoda
 4/10/2020 3:01:47 PM

Quant Time: Apr 09 01:27:01 2020
 Quant Method : Z:\VOASRV\HPCHEM1\MSVOA_W\METHOD\SOM2WLM032520S.M
 Quant Title : VOC Analysis
 QLast Update : Thu Apr 09 01:17:46 2020
 Response via : Initial Calibration

Internal Standards	R.T.	QIon	Response	Conc	Units	Dev(Min)
1) 1,4-Difluorobenzene	8.84	114	565223	25.00	ug/L	0.00
28) Chlorobenzene-d5	11.63	117	525295	25.00	ug/L	0.00
60) 1,4-Dichlorobenzene-d4	13.55	152	200676	25.00	ug/L	0.00

System Monitoring Compounds

4) Vinyl Chloride-d3	2.36	65	225014	23.05	ug/L	0.00
Spiked Amount	25.000	Range	30 - 150	Recovery	=	92.20%
7) Chloroethane-d5	2.89	69	212172	26.36	ug/L	0.00
Spiked Amount	25.000	Range	30 - 150	Recovery	=	105.44%
10) 1,1-Dichloroethene-d2	4.02	63	327878m	16.71	ug/L	0.00
Spiked Amount	25.000	Range	45 - 110	Recovery	=	66.84%
20) 2-Butanone-d5	7.08	46	132631	59.69	ug/L	0.00
Spiked Amount	50.000	Range	20 - 135	Recovery	=	119.38%
24) Chloroform-d	7.65	84	404540	23.95	ug/L	0.00
Spiked Amount	25.000	Range	40 - 150	Recovery	=	95.80%
26) 1,2-Dichloroethane-d4	8.31	65	258115	26.39	ug/L	0.00
Spiked Amount	25.000	Range	70 - 130	Recovery	=	105.56%
29) Benzene-d6	8.27	84	796597	23.69	ug/L	0.00
Spiked Amount	25.000	Range	20 - 135	Recovery	=	94.76%
33) 1,2-Dichloropropane-d6	9.27	67	268605	24.05	ug/L	0.00
Spiked Amount	25.000	Range	70 - 120	Recovery	=	96.20%
37) Toluene-d8	10.32	98	663123	23.14	ug/L	0.00
Spiked Amount	25.000	Range	30 - 130	Recovery	=	92.56%
38) trans-1,3-Dichloropropene-	10.58	79	100279	23.46	ug/L	0.00
Spiked Amount	25.000	Range	30 - 135	Recovery	=	93.84%
39) 2-Hexanone-d5	10.93	63	88125	53.42	ug/L	0.00
Spiked Amount	50.000	Range	20 - 135	Recovery	=	106.84%
48) 1,1,2,2-Tetrachloroethane-	12.69	84	193845	25.38	ug/L	0.00
Spiked Amount	25.000	Range	45 - 120	Recovery	=	101.52%
61) 1,2-Dichlorobenzene-d4	13.85	152	175716	25.16	ug/L	0.00
Spiked Amount	25.000	Range	75 - 120	Recovery	=	100.64%

04/10/20 23

Target Compounds Ovalue

(#) = qualifier out of range (m) = manual integration (+) = signals summed

Data Path : Z:\VOASRV\HPCHEM1\MSVOA W\DATA\VW040820\
 Data File : VW015165.D
 Acq On : 08 Apr 2020 10:20
 Operator : SY/VA
 Sample : VW0408SBL01
 Misc : 5.00G/10ML/MSVOA W/SOIL
 ALS Vial : 4 Sample Multiplier: 1

Instrument :
 MSVOA_W
 Client Sampled :
 VBLK18

Manual Integrations
 APPROVED

MMDadoda
 4/10/2020 3:01:47 PM

Quant Time: Apr 09 01:27:01 2020
 Quant Method : Z:\VOASRV\HPCHEM1\MSVOA_W\METHOD\SOM2WLM032520S.M
 Quant Title : VOC Analysis
 QLast Update : Thu Apr 09 01:17:46 2020
 Response via : Initial Calibration

