

Data Path : Z:\VOASRV\HPCHEM1\MSVOA W\DATA\VW040820\
 Data File : VW015167.D
 Acq On : 08 Apr 2020 13:34
 Operator : SY/VA
 Sample : L2176-05
 Misc : 5.48G/10ML/MSVOA W/SOIL
 ALS Vial : 4 Sample Multiplier: 1

Instrument :
 MSVOA_W
 ClientSampleId :
 BG2J1

Quant Time: Apr 09 01:51:50 2020
 Quant Method : Z:\VOASRV\HPCHEM1\MSVOA_W\METHOD\SOM2WLM032520S.M
 Quant Title : VOC Analysis
 QLast Update : Thu Apr 09 01:17:46 2020
 Response via : Initial Calibration

Internal Standards	R.T.	QIon	Response	Conc	Units	Dev(Min)
1) 1,4-Difluorobenzene	8.84	114	285481	25.00	ug/L	0.00
28) Chlorobenzene-d5	11.63	117	259593	25.00	ug/L	0.00
60) 1,4-Dichlorobenzene-d4	13.56	152	107296	25.00	ug/L	0.00

System Monitoring Compounds

4) Vinyl Chloride-d3	2.36	65	101162	20.52	ug/L	0.00
Spiked Amount	25.000	Range	30 - 150	Recovery	=	82.08%
7) Chloroethane-d5	2.90	69	99094	24.37	ug/L	0.01
Spiked Amount	25.000	Range	30 - 150	Recovery	=	97.48%
10) 1,1-Dichloroethene-d2	4.02	63	152733	15.41	ug/L	0.00
Spiked Amount	25.000	Range	45 - 110	Recovery	=	61.64%
20) 2-Butanone-d5	7.08	46	56400	50.26	ug/L	0.00
Spiked Amount	50.000	Range	20 - 135	Recovery	=	100.52%
24) Chloroform-d	7.65	84	201107	23.58	ug/L	0.00
Spiked Amount	25.000	Range	40 - 150	Recovery	=	94.32%
26) 1,2-Dichloroethane-d4	8.31	65	122442	24.78	ug/L	0.00
Spiked Amount	25.000	Range	70 - 130	Recovery	=	99.12%
29) Benzene-d6	8.27	84	396619	23.87	ug/L	0.00
Spiked Amount	25.000	Range	20 - 135	Recovery	=	95.48%
33) 1,2-Dichloropropane-d6	9.27	67	148376	26.88	ug/L	0.00
Spiked Amount	25.000	Range	70 - 120	Recovery	=	107.52%
37) Toluene-d8	10.32	98	443902	31.35	ug/L	0.00
Spiked Amount	25.000	Range	30 - 130	Recovery	=	125.40%
38) trans-1,3-Dichloropropene-	10.58	79	50584	23.95	ug/L	0.00
Spiked Amount	25.000	Range	30 - 135	Recovery	=	95.80%
39) 2-Hexanone-d5	10.93	63	42292	51.88	ug/L	0.00
Spiked Amount	50.000	Range	20 - 135	Recovery	=	103.76%
48) 1,1,2,2-Tetrachloroethane-	12.69	84	89797	23.79	ug/L	0.00
Spiked Amount	25.000	Range	45 - 120	Recovery	=	95.16%
61) 1,2-Dichlorobenzene-d4	13.85	152	86015	23.04	ug/L	0.00
Spiked Amount	25.000	Range	75 - 120	Recovery	=	92.16%

Target Compounds

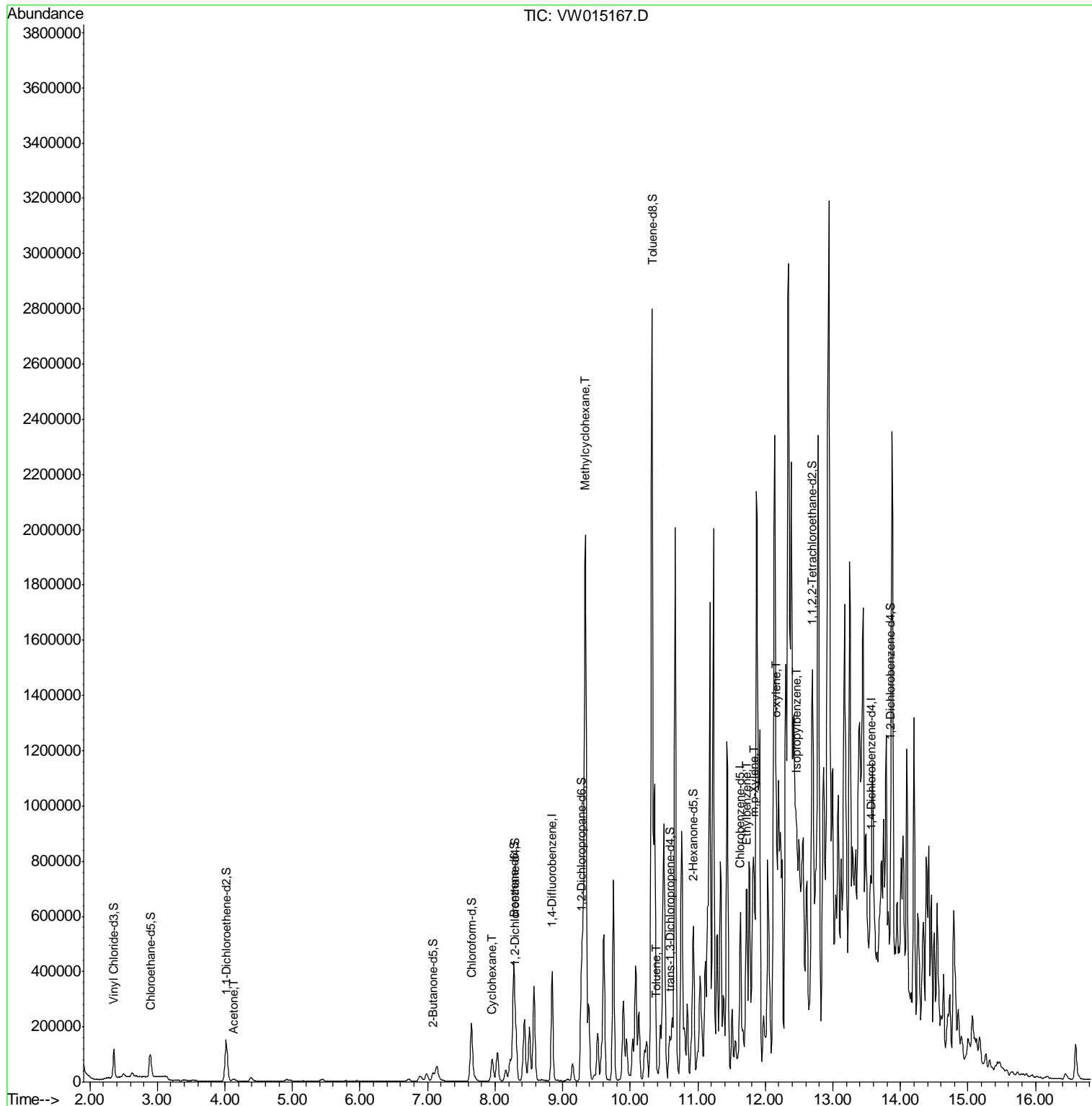
Target Compounds	R.T.	QIon	Response	Conc	Units	Ovalue
13) Acetone	4.13	43	13273	13.252	ug/L	96
30) Cyclohexane	7.96	56	35841	4.232	ug/L	99
36) Methylcyclohexane	9.34	83	728135	90.658	ug/L	91
44) Toluene	10.39	91	20709	1.091	ug/L	91
53) Ethylbenzene	11.73	91	34386	1.676	ug/L	97
54) m,p-Xylene	11.84	106	121901	16.952	ug/L	97
55) o-xylene	12.16	106	71603	10.621	ug/L	89
57) Isopropylbenzene	12.46	105	238008	12.814	ug/L #	95

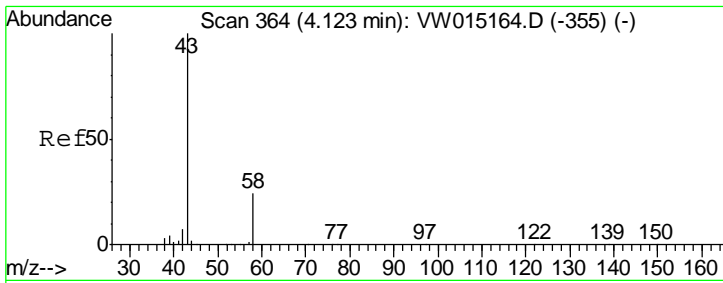
(#) = qualifier out of range (m) = manual integration (+) = signals summed

Data Path : Z:\VOASRV\HPCHEM1\MSVOA W\DATA\VW040820\
 Data File : VW015167.D
 Acq On : 08 Apr 2020 13:34
 Operator : SY/VA
 Sample : L2176-05
 Misc : 5.48G/10ML/MSVOA W/SOIL
 ALS Vial : 4 Sample Multiplier: 1

Instrument :
 MSVOA_W
 ClientSampled :
 BG2J1

Quant Time: Apr 09 01:51:50 2020
 Quant Method : Z:\VOASRV\HPCHEM1\MSVOA_W\METHOD\SOM2WLM032520S.M
 Quant Title : VOC Analysis
 QLast Update : Thu Apr 09 01:17:46 2020
 Response via : Initial Calibration

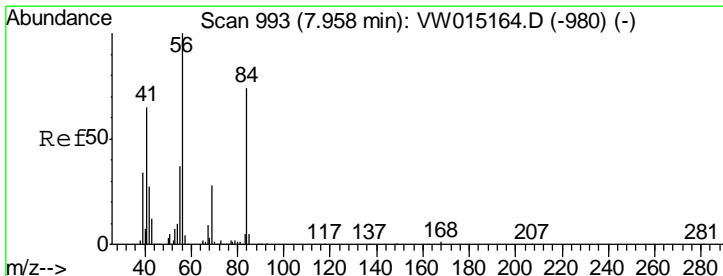
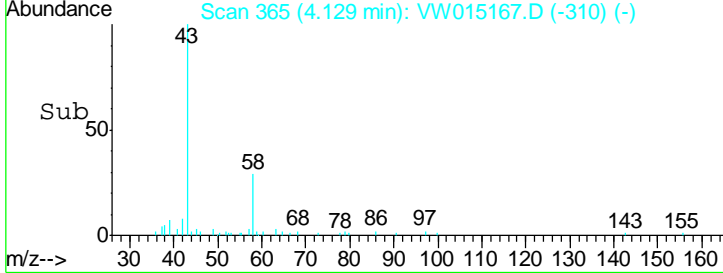
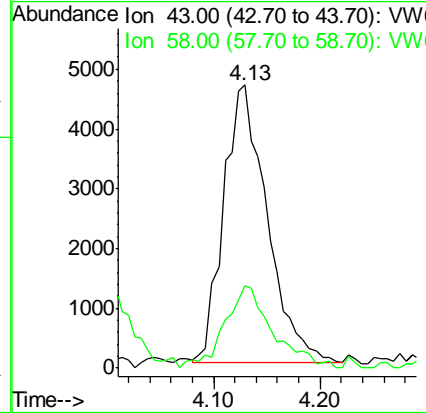
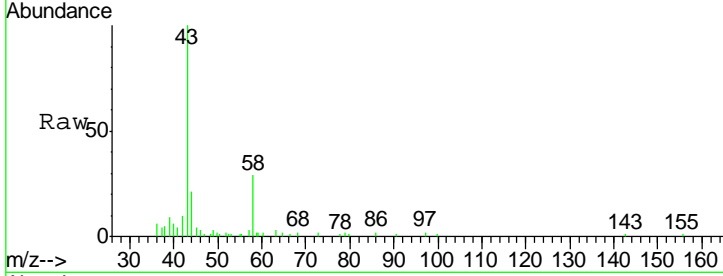




#13
 Acetone
 Concen: 13.252 ug/L
 RT: 4.13 min Scan# 365
 Delta R.T. 0.01 min
 Lab File: VW015167.D
 Acq: 08 Apr 2020 13:34

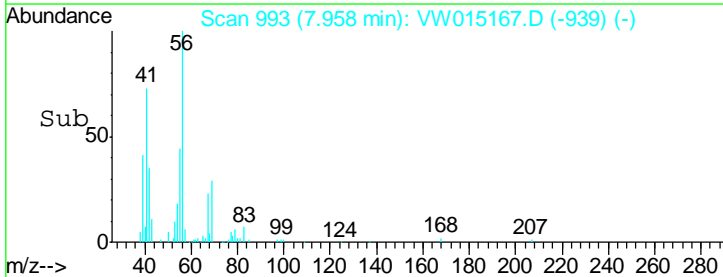
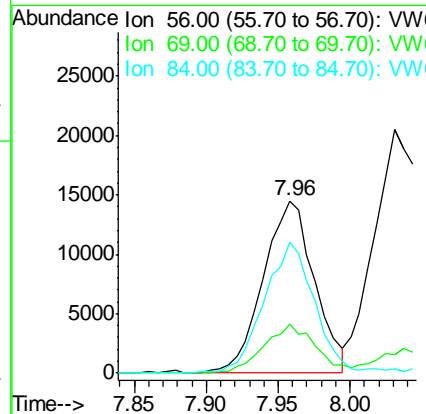
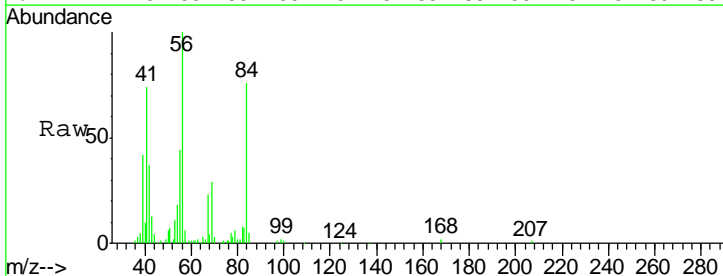
Instrument :
 MSVOA_W
 ClientSampled :
 BG2J1

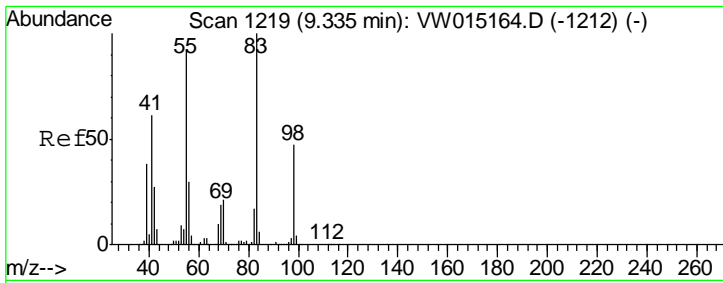
Tgt Ion	Resp	Lower	Upper
43	13273		
58	24.9	0.0	54.4



#30
 Cyclohexane
 Concen: 4.232 ug/L
 RT: 7.96 min Scan# 993
 Delta R.T. 0.00 min
 Lab File: VW015167.D
 Acq: 08 Apr 2020 13:34

Tgt Ion	Resp	Lower	Upper
56	35841		
69	28.8	22.0	33.0
84	73.9	58.9	88.3

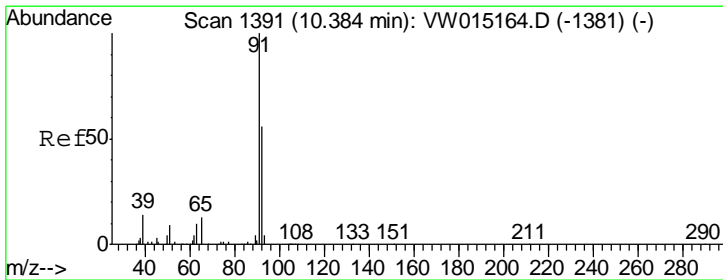
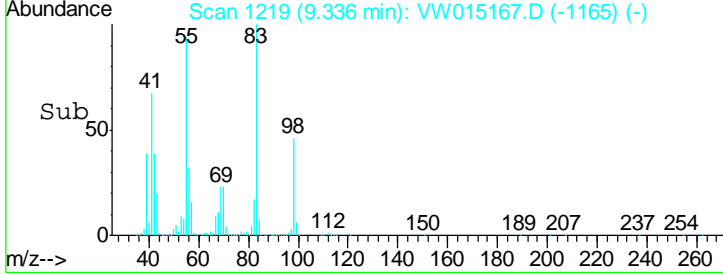
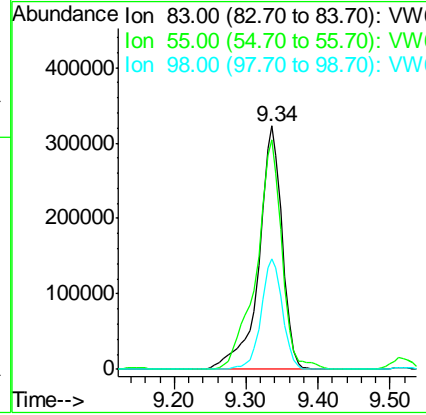
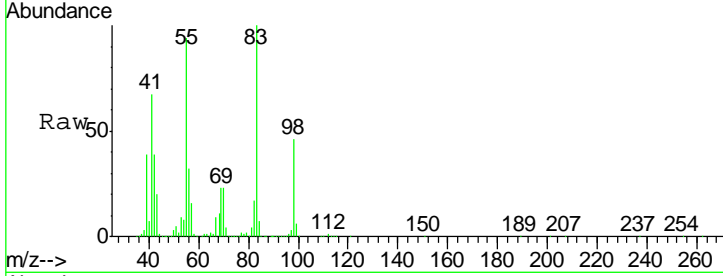




#36
 Methylcyclohexane
 Concen: 90.658 ug/L
 RT: 9.34 min Scan# 1219
 Delta R.T. 0.00 min
 Lab File: VW015167.D
 Acq: 08 Apr 2020 13:34

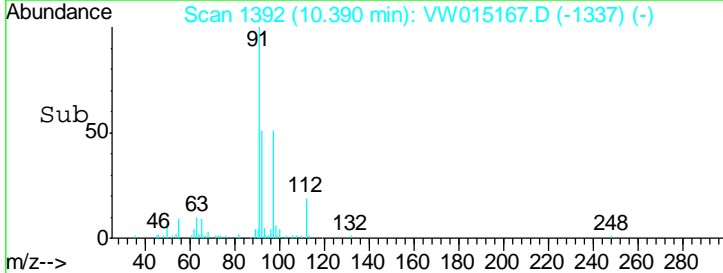
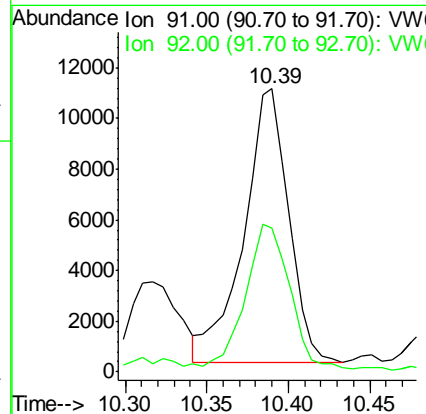
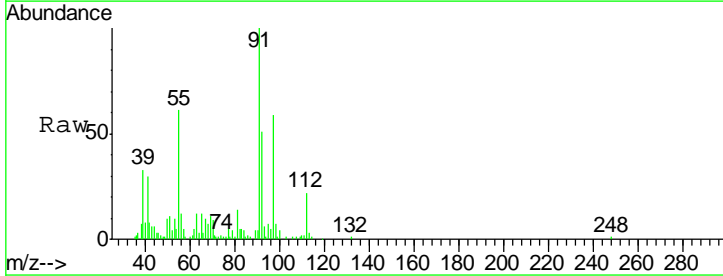
Instrument :
 MSVOA_W
 ClientSampled :
 BG2J1

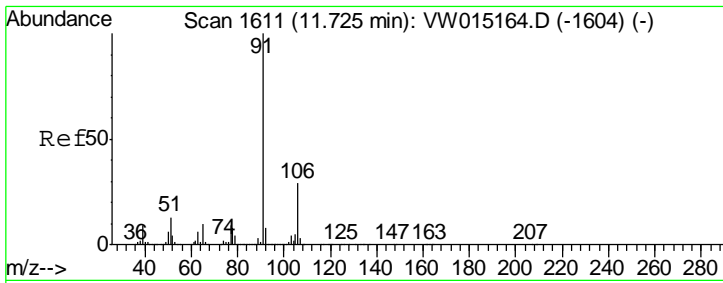
Tgt Ion	Resp	Lower	Upper
83	100		
55	100.9	73.4	110.2
98	41.3	36.6	55.0



#44
 Toluene
 Concen: 1.091 ug/L
 RT: 10.39 min Scan# 1392
 Delta R.T. 0.01 min
 Lab File: VW015167.D
 Acq: 08 Apr 2020 13:34

Tgt Ion	Resp	Lower	Upper
91	100		
92	51.0	40.2	74.6

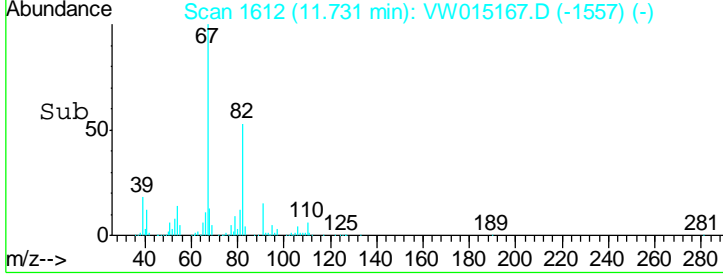
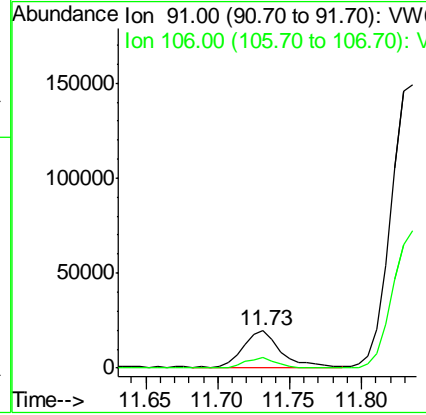
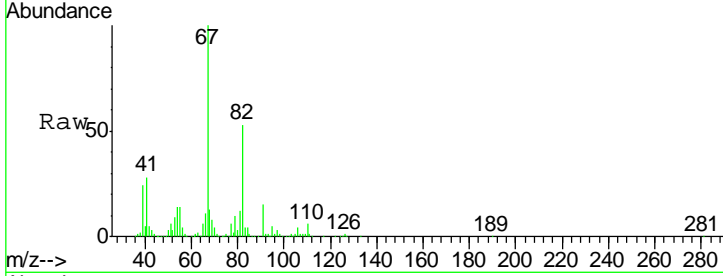




#53
 Ethylbenzene
 Concen: 1.676 ug/L
 RT: 11.73 min Scan# 1612
 Delta R.T. 0.01 min
 Lab File: VW015167.D
 Acq: 08 Apr 2020 13:34

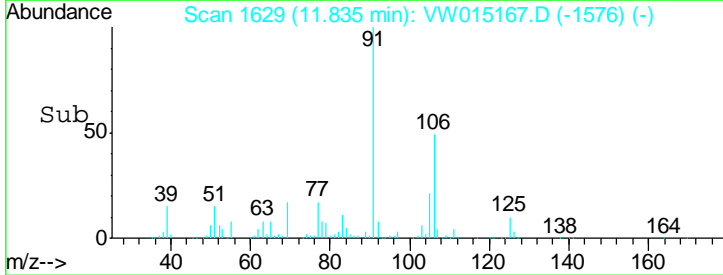
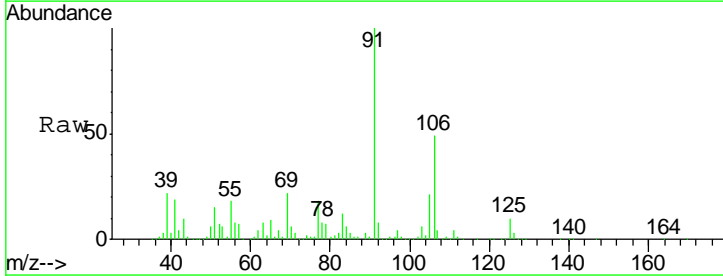
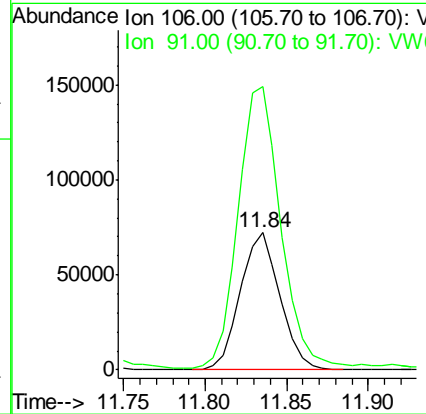
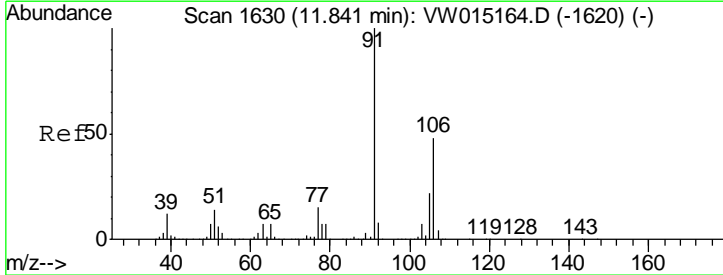
Instrument : MSVOA_W
 ClientSampled : BG2J1

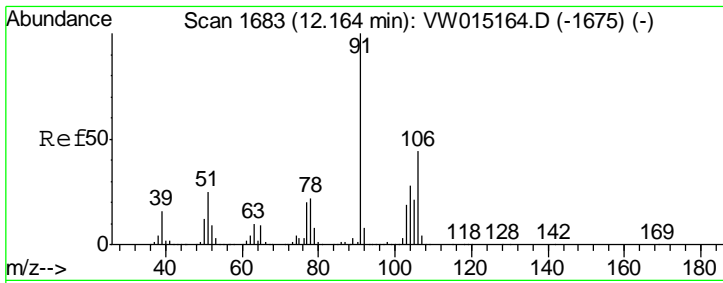
Tgt Ion	Resp	Lower	Upper
91	100		
106	27.7	20.6	38.2



#54
 m,p-Xylene
 Concen: 16.952 ug/L
 RT: 11.84 min Scan# 1629
 Delta R.T. -0.01 min
 Lab File: VW015167.D
 Acq: 08 Apr 2020 13:34

Tgt Ion	Resp	Lower	Upper
106	100		
91	206.1	147.3	273.6

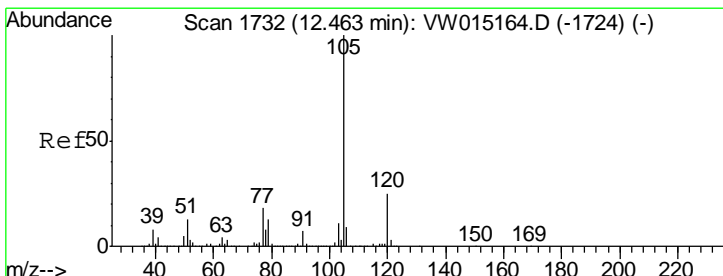
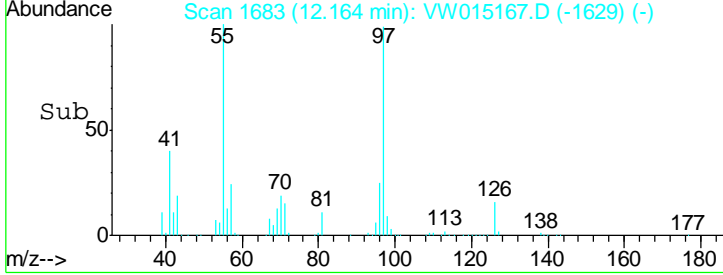
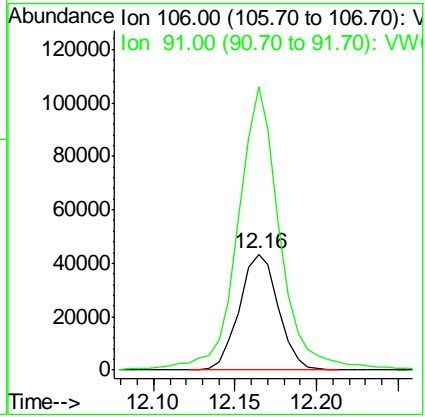
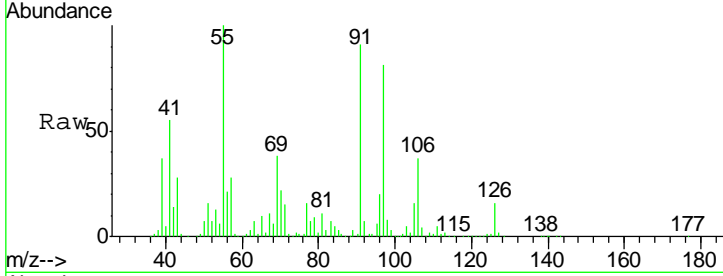




#55
 o-xylene
 Concen: 10.621 ug/L
 RT: 12.16 min Scan# 1683
 Delta R.T. 0.00 min
 Lab File: VW015167.D
 Acq: 08 Apr 2020 13:34

Instrument : MSVOA_W
 ClientSampled : BG2J1

Tgt Ion	Resp	Lower	Upper
106	71603		
106	100		
91	244.4	158.6	294.6



#57
 Isopropylbenzene
 Concen: 12.814 ug/L
 RT: 12.46 min Scan# 1732
 Delta R.T. 0.00 min
 Lab File: VW015167.D
 Acq: 08 Apr 2020 13:34

Tgt Ion	Resp	Lower	Upper
105	238008		
105	100		
120	25.2	20.0	30.0
77	22.8	14.5	21.7#

