

Data Path : Z:\VOASRV\HPCHEM1\MSVOA W\DATA\VW041019\
 Data File : VW009890.D
 Acq On : 10 Apr 2019 20:11
 Operator : SY/VA
 Sample : K2340-13
 Misc : 5.17G/10ML/MSVOA W/SOIL
 ALS Vial : 2 Sample Multiplier: 1

Instrument :
 MSVOA_W
 ClientSampleId :
 BF2N7

Integration Parameters: LSCINT.P

Integrator: RTE
 Smoothing : OFF
 Sampling : 1
 Start Thrs: 0.2
 Stop Thrs : 0

Filtering: 5
 Min Area: 0 % of largest Peak
 Max Peaks: 100
 Peak Location: TOP

If leading or trailing edge < 100 prefer < Baseline drop else tangent >
 Peak separation: 5

Method : Z:\VOASRV\HPCHEM1\MSVOA_W\METHOD\SOM2WLM040319S.M
 Title : VOC Analysis

Signal : TIC

peak #	R.T. min	first scan	max scan	last scan	PK TY	peak height	corr. area	corr. % max.	% of total
1	2.355	69	74	88	rVB	91510	217238	10.37%	1.420%
2	2.891	156	162	178	rVB	81550	233108	11.12%	1.524%
3	4.019	336	347	360	rBV	186989	661796	31.58%	4.327%
4	4.288	388	391	392	rBV3	957	1128	0.05%	0.007%
5	4.477	420	422	423	rBV2	715	431	0.02%	0.003%
6	4.531	429	431	433	rVB2	1182	1180	0.06%	0.008%
7	4.562	433	436	437	rBV3	539	683	0.03%	0.004%
8	4.909	485	493	514	rVB3	34058	140162	6.69%	0.916%
9	5.117	525	527	529	rBV3	831	818	0.04%	0.005%
10	5.190	537	539	542	rVB4	918	820	0.04%	0.005%
11	5.220	542	544	546	rBV3	844	811	0.04%	0.005%
12	5.312	558	559	563	rBV3	628	611	0.03%	0.004%
13	5.415	574	576	581	rVB4	1705	1912	0.09%	0.012%
14	5.708	623	624	629	rVB4	926	963	0.05%	0.006%
15	5.745	629	630	631	rBV	638	247	0.01%	0.002%
16	5.812	639	641	642	rBV2	636	290	0.01%	0.002%
17	5.854	646	648	651	rBV3	935	1196	0.06%	0.008%
18	5.934	651	661	670	rVV7	5843	17692	0.84%	0.116%
19	6.001	670	672	674	rVB2	630	351	0.02%	0.002%
20	6.080	683	685	687	rBV2	610	560	0.03%	0.004%
21	6.196	699	704	705	rBV5	1037	1475	0.07%	0.010%
22	6.348	727	729	732	rBV3	630	512	0.02%	0.003%
23	6.458	745	747	750	rBV2	1034	722	0.03%	0.005%
24	6.501	753	754	758	rVB3	901	900	0.04%	0.006%
25	6.537	758	760	761	rBV2	937	920	0.04%	0.006%
26	6.580	766	767	768	rBV	858	459	0.02%	0.003%
27	6.635	773	776	777	rBV3	606	494	0.02%	0.003%
28	6.653	777	779	780	rVB2	632	329	0.02%	0.002%
29	6.702	786	787	788	rVB	659	241	0.01%	0.002%
30	6.750	793	795	796	rBV2	369	262	0.01%	0.002%
31	6.830	806	808	815	rVB7	1011	1877	0.09%	0.012%
32	6.897	817	819	821	rBV3	659	484	0.02%	0.003%
33	6.921	821	823	827	rBV2	622	707	0.03%	0.005%
34	6.988	833	834	836	rBV2	766	630	0.03%	0.004%

Data Path : Z:\VOASRV\HPCHEM1\MSVOA W\DATA\VW041019\
 Data File : VW009890.D
 Acq On : 10 Apr 2019 20:11
 Operator : SY/VA
 Sample : K2340-13
 Misc : 5.17G/10ML/MSVOA W/SOIL
 ALS Vial : 2 Sample Multiplier: 1

Instrument :
 MSVOA_W
 ClientSampleId :
 BF2N7

Integration Parameters: LSCINT.P

Integrator: RTE
 Smoothing : OFF
 Sampling : 1
 Start Thrs: 0.2
 Stop Thrs : 0

Filtering: 5
 Min Area: 0 % of largest Peak
 Max Peaks: 100
 Peak Location: TOP

If leading or trailing edge < 100 prefer < Baseline drop else tangent >
 Peak separation: 5

Method : Z:\VOASRV\HPCHEM1\MSVOA_W\METHOD\SOM2WLM040319S.M
 Title : VOC Analysis

35	7.080	840	849	870	rVV	69659	222448	10.62%	1.454%
36	7.391	898	900	901	rBV2	676	444	0.02%	0.003%
37	7.439	904	908	915	rVB3	2882	5588	0.27%	0.037%
38	7.641	932	941	954	rVB	393277	951436	45.40%	6.220%
39	8.006	999	1001	1003	rVB3	869	640	0.03%	0.004%
40	8.031	1003	1005	1007	rBV	833	776	0.04%	0.005%
41	8.275	1035	1045	1060	rBV2	683490	2095496	100.00%	13.699%
42	8.543	1087	1089	1090	rBV2	540	344	0.02%	0.002%
43	8.610	1098	1100	1101	rBV2	1290	887	0.04%	0.006%
44	8.689	1109	1113	1115	rBV3	1405	1853	0.09%	0.012%
45	8.842	1129	1138	1148	rBV	701622	1359128	64.86%	8.885%
46	9.024	1166	1168	1169	rBV2	896	481	0.02%	0.003%
47	9.079	1173	1177	1178	rBV3	2324	3294	0.16%	0.022%
48	9.274	1200	1209	1219	rBV	504628	1027571	49.04%	6.718%
49	9.488	1243	1244	1249	rVB2	1180	1094	0.05%	0.007%
50	9.537	1251	1252	1254	rVB2	1118	511	0.02%	0.003%
51	9.561	1254	1256	1257	rBV	681	459	0.02%	0.003%
52	9.598	1260	1262	1264	rBV3	1063	916	0.04%	0.006%
53	9.652	1266	1271	1276	rVB7	3312	6644	0.32%	0.043%
54	9.762	1286	1289	1290	rBV2	746	706	0.03%	0.005%
55	9.780	1290	1292	1294	rVB3	740	677	0.03%	0.004%
56	9.811	1294	1297	1300	rBV2	761	853	0.04%	0.006%
57	9.841	1300	1302	1303	rBV2	675	474	0.02%	0.003%
58	9.890	1308	1310	1311	rBV	616	577	0.03%	0.004%
59	9.951	1318	1320	1322	rVB2	521	344	0.02%	0.002%
60	9.976	1322	1324	1325	rBV	431	369	0.02%	0.002%
61	10.030	1326	1333	1343	rBV	244426	443046	21.14%	2.896%
62	10.323	1372	1381	1389	rBV	929126	1613942	77.02%	10.551%
63	10.530	1412	1415	1416	rBV2	923	832	0.04%	0.005%
64	10.579	1416	1423	1433	rVV	173119	296372	14.14%	1.938%
65	10.701	1440	1443	1451	rVB2	5127	7641	0.36%	0.050%
66	10.860	1463	1469	1474	rBV2	19320	33338	1.59%	0.218%
67	10.927	1474	1480	1496	rVV2	275893	488811	23.33%	3.196%
68	11.225	1528	1529	1530	rBV	1060	669	0.03%	0.004%
69	11.634	1587	1596	1606	rBV	976527	1692580	80.77%	11.065%
70	11.920	1640	1643	1644	rBV3	1095	1134	0.05%	0.007%
71	11.963	1647	1650	1651	rBV3	1153	1313	0.06%	0.009%

Data Path : Z:\VOASRV\HPCHEM1\MSVOA W\DATA\VW041019\
 Data File : VW009890.D
 Acq On : 10 Apr 2019 20:11
 Operator : SY/VA
 Sample : K2340-13
 Misc : 5.17G/10ML/MSVOA W/SOIL
 ALS Vial : 2 Sample Multiplier: 1

Instrument :
 MSVOA_W
 ClientSampleId :
 BF2N7

Integration Parameters: LSCINT.P

Integrator: RTE
 Smoothing : OFF Filtering: 5
 Sampling : 1 Min Area: 0 % of largest Peak
 Start Thrs: 0.2 Max Peaks: 100
 Stop Thrs : 0 Peak Location: TOP

If leading or trailing edge < 100 prefer < Baseline drop else tangent >
 Peak separation: 5

Method : Z:\VOASRV\HPCHEM1\MSVOA_W\METHOD\SOM2WLM040319S.M
 Title : VOC Analysis

72	12.054	1663	1665	1667	rBV2	758	584	0.03%	0.004%
73	12.176	1681	1685	1693	rVB9	3454	7443	0.36%	0.049%
74	12.274	1700	1701	1705	rBV3	634	720	0.03%	0.005%
75	12.402	1721	1722	1726	rBV2	818	536	0.03%	0.004%
76	12.469	1729	1733	1737	rVB5	3339	5292	0.25%	0.035%
77	12.615	1750	1757	1762	rBV2	11659	18859	0.90%	0.123%
78	12.695	1762	1770	1779	rBV	435061	700595	33.43%	4.580%
79	12.810	1787	1789	1792	rBV3	936	850	0.04%	0.006%
80	12.981	1816	1817	1818	rBV	795	343	0.02%	0.002%
81	13.060	1829	1830	1833	rBV3	1039	753	0.04%	0.005%
82	13.152	1843	1845	1846	rBV2	1191	966	0.05%	0.006%
83	13.481	1893	1899	1901	rBV6	4373	8022	0.38%	0.052%
84	13.560	1905	1912	1921	rVV	947076	1481228	70.69%	9.684%
85	13.853	1952	1960	1973	rBV	854970	1429028	68.20%	9.342%
86	14.072	1992	1996	2002	rVB3	13431	23361	1.11%	0.153%
87	14.328	2035	2038	2047	rVB7	5729	11623	0.55%	0.076%
88	14.395	2047	2049	2051	rBV3	1763	1461	0.07%	0.010%
89	14.530	2067	2071	2077	rVB5	5748	10363	0.49%	0.068%
90	14.712	2099	2101	2103	rBV2	1937	2092	0.10%	0.014%
91	15.420	2214	2217	2219	rBV3	1524	1804	0.09%	0.012%
92	15.505	2226	2231	2236	rVB	17509	29158	1.39%	0.191%
93	16.042	2317	2319	2320	rBV	1199	896	0.04%	0.006%
94	16.212	2346	2347	2351	rBV3	1106	1275	0.06%	0.008%
95	16.273	2355	2357	2360	rVB3	1295	1180	0.06%	0.008%
96	16.304	2360	2362	2365	rBV4	1100	1167	0.06%	0.008%
97	16.535	2398	2400	2401	rBV2	1405	1035	0.05%	0.007%

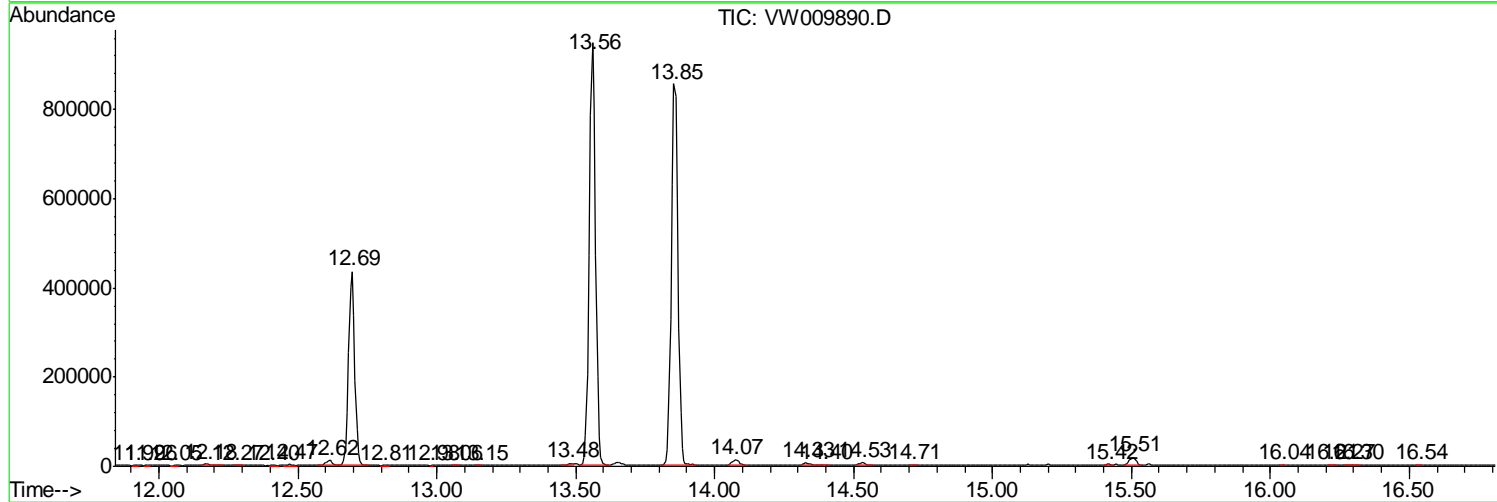
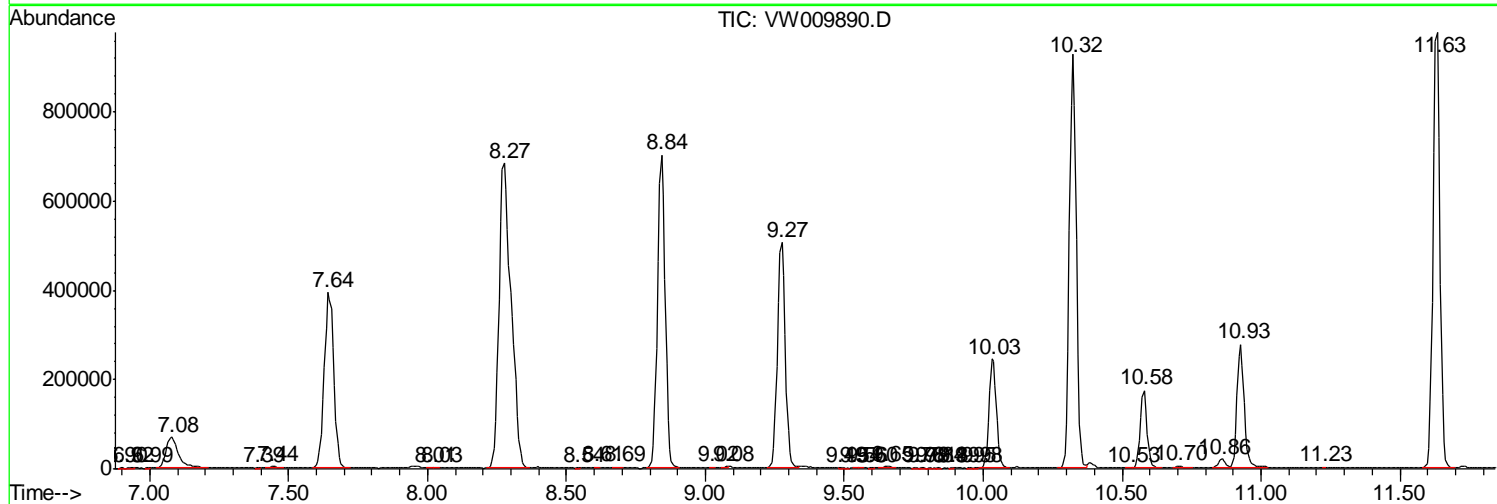
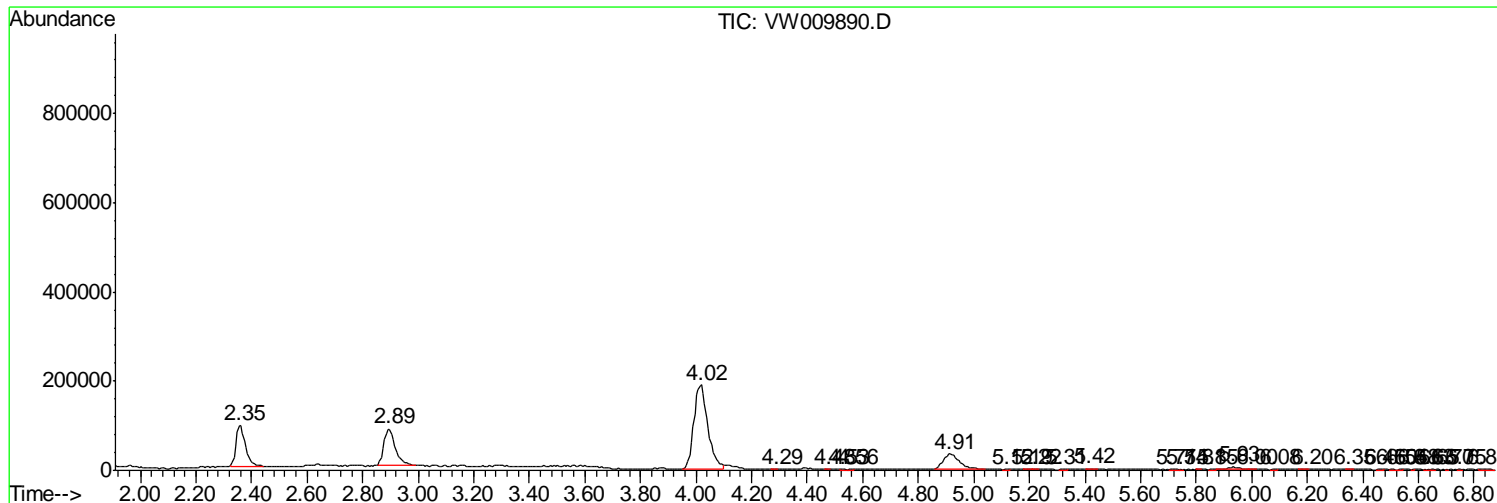
Sum of corrected areas: 15296331

Data Path : Z:\VOASRV\HPCHEM1\MSVOA W\DATA\VW041019\
 Data File : VW009890.D
 Acq On : 10 Apr 2019 20:11
 Operator : SY/VA
 Sample : K2340-13
 Misc : 5.17G/10ML/MSVOA W/SOIL
 ALS Vial : 2 Sample Multiplier: 1

Instrument :
 MSVOA_W
ClientSampleId :
 BF2N7

Quant Method : Z:\VOASRV\HPCHEM1\MSVOA_W\METHOD\SOM2WLM040319S.M
 Quant Title : VOC Analysis

TIC Library : C:\DATABASE\NIST11.L
 TIC Integration Parameters: LSCINT.P



Data Path : Z:\VOASRV\HPCHEM1\MSVOA_W\DATA\VW041019\
Data File : VW009890.D
Acq On : 10 Apr 2019 20:11
Operator : SY/VA
Sample : K2340-13
Misc : 5.17G/10ML/MSVOA_W/SOIL
ALS Vial : 2 Sample Multiplier: 1

Instrument :
MSVOA_W
ClientSampleId :
BF2N7

Quant Method : Z:\VOASRV\HPCHEM1\MSVOA_W\METHOD\SOM2WLM040319S.M
Quant Title : VOC Analysis

TIC Library : C:\DATABASE\NIST11.L
TIC Integration Parameters: LSCINT.P

No Library Search Compounds Detected

Data Path : Z:\VOASRV\HPCHEM1\MSVOA_W\DATA\VW041019\
Data File : VW009890.D
Acq On : 10 Apr 2019 20:11
Operator : SY/VA
Sample : K2340-13
Misc : 5.17G/10ML/MSVOA_W/SOIL
ALS Vial : 2 Sample Multiplier: 1

Instrument :
MSVOA_W
ClientSampleId :
BF2N7

Quant Method : Z:\VOASRV\HPCHEM1\MSVOA_W\METHOD\SOM2WLM040319S.M
Quant Title : VOC Analysis

TIC Library : C:\DATABASE\NIST11.L
TIC Integration Parameters: LSCINT.P

TIC Top Hit name	RT	EstConc	Units	Response	--Internal Standard--			
					#	RT	Resp	Conc
