

Data Path : Z:\VOASRV\HPCHEM1\MSVOA W\DATA\VW041119\
 Data File : VW009955.D
 Acq On : 12 Apr 2019 13:38
 Operator : SY/VA
 Sample : K2354-03
 Misc : 6.06G/10ML/MSVOA W/SOIL
 ALS Vial : 2 Sample Multiplier: 1

Instrument :
 MSVOA_W
 ClientSampleId :

Quant Time: Apr 13 00:00:07 2019
 Quant Method : Z:\VOASRV\HPCHEM1\MSVOA_W\METHOD\SOM2WLM040319S.M
 Quant Title : VOC Analysis
 QLast Update : Fri Apr 12 23:54:39 2019
 Response via : Initial Calibration

Internal Standards	R.T.	QIon	Response	Conc	Units	Dev(Min)
1) 1,4-Difluorobenzene	8.84	114	569587	25.00	ug/L	0.00
28) Chlorobenzene-d5	11.63	117	541251	25.00	ug/L	0.00
60) 1,4-Dichlorobenzene-d4	13.56	152	210962	25.00	ug/L	0.00

System Monitoring Compounds

4) Vinyl Chloride-d3	2.35	65	102003	13.69	ug/L	0.00
Spiked Amount	25.000	Range	30 - 150	Recovery	=	54.76%
7) Chloroethane-d5	2.89	69	96102	14.07	ug/L	0.00
Spiked Amount	25.000	Range	30 - 150	Recovery	=	56.28%
10) 1,1-Dichloroethene-d2	4.01	63	202319	12.62	ug/L	0.00
Spiked Amount	25.000	Range	45 - 110	Recovery	=	50.48%
20) 2-Butanone-d5	7.07	46	118352	48.91	ug/L	0.00
Spiked Amount	50.000	Range	20 - 135	Recovery	=	97.82%
24) Chloroform-d	7.64	84	328503	21.14	ug/L	0.00
Spiked Amount	25.000	Range	40 - 150	Recovery	=	84.56%
26) 1,2-Dichloroethane-d4	8.31	65	212568	22.28	ug/L	0.00
Spiked Amount	25.000	Range	70 - 130	Recovery	=	89.12%
29) Benzene-d6	8.27	84	571042	20.10	ug/L	0.00
Spiked Amount	25.000	Range	20 - 135	Recovery	=	80.40%
33) 1,2-Dichloropropane-d6	9.27	67	193023	21.99	ug/L	0.00
Spiked Amount	25.000	Range	70 - 120	Recovery	=	87.96%
37) Toluene-d8	10.32	98	478230	18.20	ug/L	0.00
Spiked Amount	25.000	Range	30 - 130	Recovery	=	72.80%
38) trans-1,3-Dichloropropene-	10.58	79	80051	19.13	ug/L	0.00
Spiked Amount	25.000	Range	30 - 135	Recovery	=	76.52%
39) 2-Hexanone-d5	10.93	63	84334	50.98	ug/L	0.00
Spiked Amount	50.000	Range	20 - 135	Recovery	=	101.96%
48) 1,1,2,2-Tetrachloroethane-	12.69	84	187090	22.93	ug/L	0.00
Spiked Amount	25.000	Range	45 - 120	Recovery	=	91.72%
61) 1,2-Dichlorobenzene-d4	13.86	152	170809	23.07	ug/L	0.00
Spiked Amount	25.000	Range	75 - 120	Recovery	=	92.28%

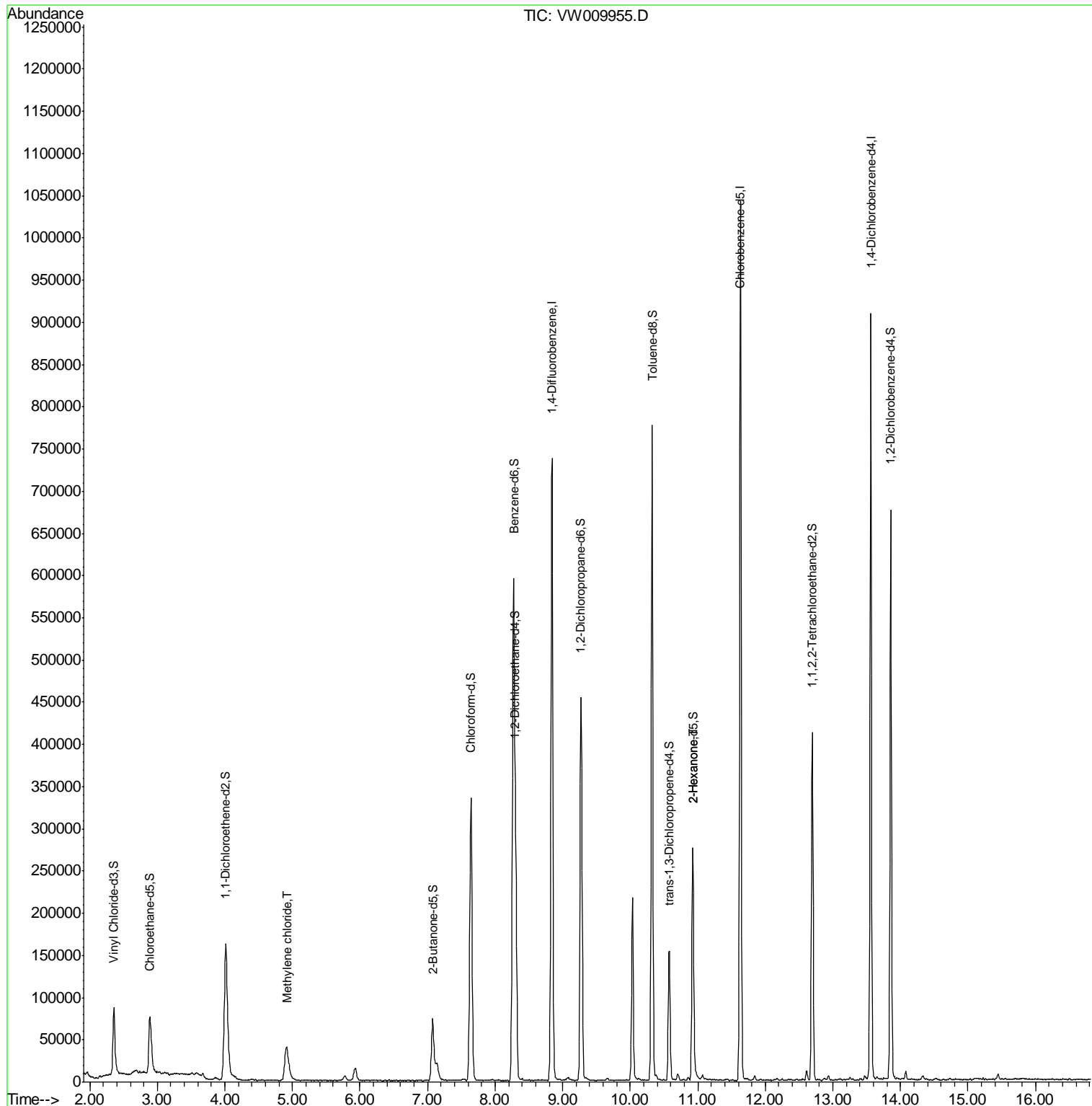
Target Compounds					Ovalue
16) Methylene chloride	4.91	84	36521	3.636 ug/L	92
49) 2-Hexanone	10.93	43	14663	3.041 ug/L #	42

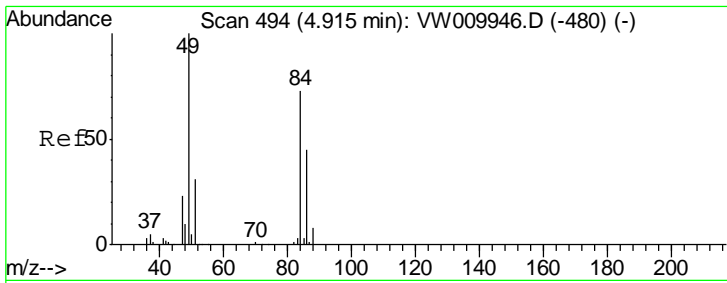
(#) = qualifier out of range (m) = manual integration (+) = signals summed

Data Path : Z:\VOASRV\HPCHEM1\MSVOA W\DATA\VW041119\
 Data File : VW009955.D
 Acq On : 12 Apr 2019 13:38
 Operator : SY/VA
 Sample : K2354-03
 Misc : 6.06G/10ML/MSVOA W/SOIL
 ALS Vial : 2 Sample Multiplier: 1

Instrument :
 MSVOA_W
 ClientSampled :

Quant Time: Apr 13 00:00:07 2019
 Quant Method : Z:\VOASRV\HPCHEM1\MSVOA_W\METHOD\SOM2WLM040319S.M
 Quant Title : VOC Analysis
 QLast Update : Fri Apr 12 23:54:39 2019
 Response via : Initial Calibration

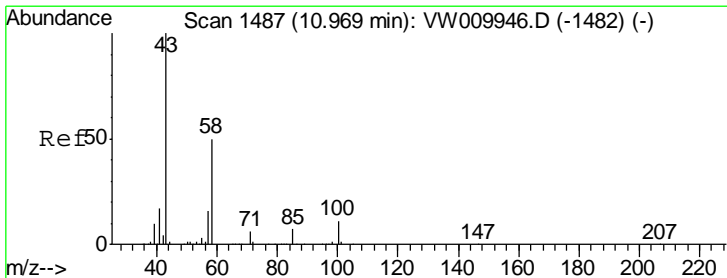
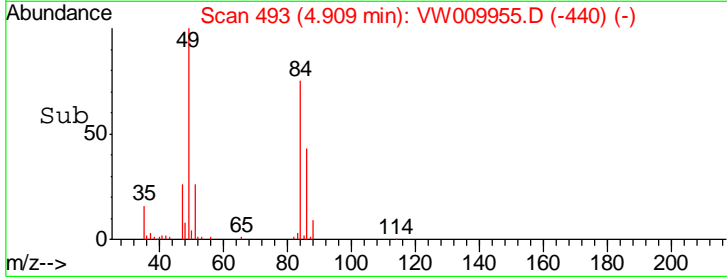
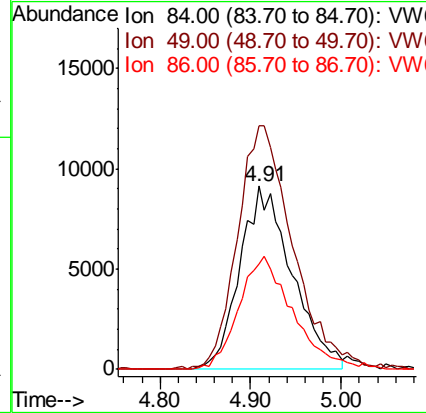
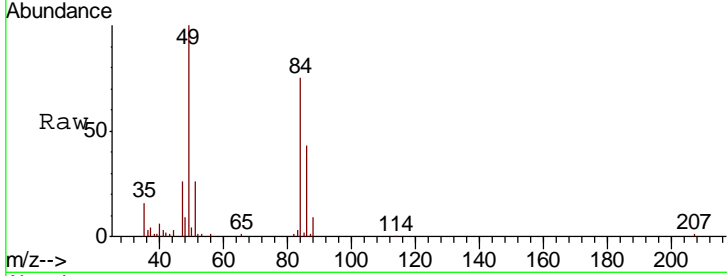




#16
 Methylene chloride
 Concen: 3.636 ug/L
 RT: 4.91 min Scan# 493
 Delta R.T. -0.01 min
 Lab File: VW009955.D
 Acq: 12 Apr 2019 13:38

Instrument :
 MSVOA_W
 ClientSampled :

Tgt Ion	Resp	Lower	Upper
84	36521		
Ion Ratio			
84	100		
49	133.0	98.3	182.5
86	57.5	46.4	86.2



#49
 2-Hexanone
 Concen: 3.041 ug/L
 RT: 10.93 min Scan# 1480
 Delta R.T. -0.04 min
 Lab File: VW009955.D
 Acq: 12 Apr 2019 13:38

Tgt Ion	Resp	Lower	Upper
43	14663		
Ion Ratio			
43	100		
58	0.0	38.9	58.3#
57	0.0	13.8	20.6#
100	1.6	8.6	13.0#

