

Data Path : Z:\VOASRV\HPCHEM1\MSVOA W\DATA\VW041119\
 Data File : VW009959.D
 Acq On : 12 Apr 2019 15:27
 Operator : SY/VA
 Sample : K2278-18
 Misc : 5.38G/10ML/MSVOA W/SOIL
 ALS Vial : 2 Sample Multiplier: 1

Instrument :
 MSVOA_W
 ClientSampleId :

Quant Time: Apr 13 00:00:38 2019
 Quant Method : Z:\VOASRV\HPCHEM1\MSVOA_W\METHOD\SOM2WLM040319S.M
 Quant Title : VOC Analysis
 QLast Update : Fri Apr 12 23:54:39 2019
 Response via : Initial Calibration

Internal Standards	R.T.	QIon	Response	Conc	Units	Dev(Min)
1) 1,4-Difluorobenzene	8.84	114	140589	25.00	ug/L	0.00
28) Chlorobenzene-d5	11.63	117	145779	25.00	ug/L	0.00
60) 1,4-Dichlorobenzene-d4	13.56	152	56848	25.00	ug/L	0.00

System Monitoring Compounds

4) Vinyl Chloride-d3	2.35	65	32027	17.41	ug/L	-0.01
Spiked Amount	25.000	Range	30 - 150	Recovery	=	69.64%
7) Chloroethane-d5	2.96	69	575	0.34	ug/L	0.07
Spiked Amount	25.000	Range	30 - 150	Recovery	=	1.36%#
10) 1,1-Dichloroethene-d2	4.00	63	60463	15.28	ug/L	-0.02
Spiked Amount	25.000	Range	45 - 110	Recovery	=	61.12%
20) 2-Butanone-d5	7.08	46	30320	50.76	ug/L	0.00
Spiked Amount	50.000	Range	20 - 135	Recovery	=	101.52%
24) Chloroform-d	7.64	84	101167	26.37	ug/L	0.00
Spiked Amount	25.000	Range	40 - 150	Recovery	=	105.48%
26) 1,2-Dichloroethane-d4	8.31	65	71265	30.26	ug/L	0.00
Spiked Amount	25.000	Range	70 - 130	Recovery	=	121.04%
29) Benzene-d6	8.27	84	165857	21.67	ug/L	0.00
Spiked Amount	25.000	Range	20 - 135	Recovery	=	86.68%
33) 1,2-Dichloropropane-d6	9.27	67	61091	25.85	ug/L	0.00
Spiked Amount	25.000	Range	70 - 120	Recovery	=	103.40%
37) Toluene-d8	10.32	98	131468	18.58	ug/L	0.00
Spiked Amount	25.000	Range	30 - 130	Recovery	=	74.32%
38) trans-1,3-Dichloropropene-	10.58	79	23490	20.84	ug/L	0.00
Spiked Amount	25.000	Range	30 - 135	Recovery	=	83.36%
39) 2-Hexanone-d5	10.93	63	18321	41.12	ug/L	0.00
Spiked Amount	50.000	Range	20 - 135	Recovery	=	82.24%
48) 1,1,2,2-Tetrachloroethane-	12.69	84	60163	27.38	ug/L	0.00
Spiked Amount	25.000	Range	45 - 120	Recovery	=	109.52%
61) 1,2-Dichlorobenzene-d4	13.85	152	52113	26.12	ug/L	0.00
Spiked Amount	25.000	Range	75 - 120	Recovery	=	104.48%

Target Compounds

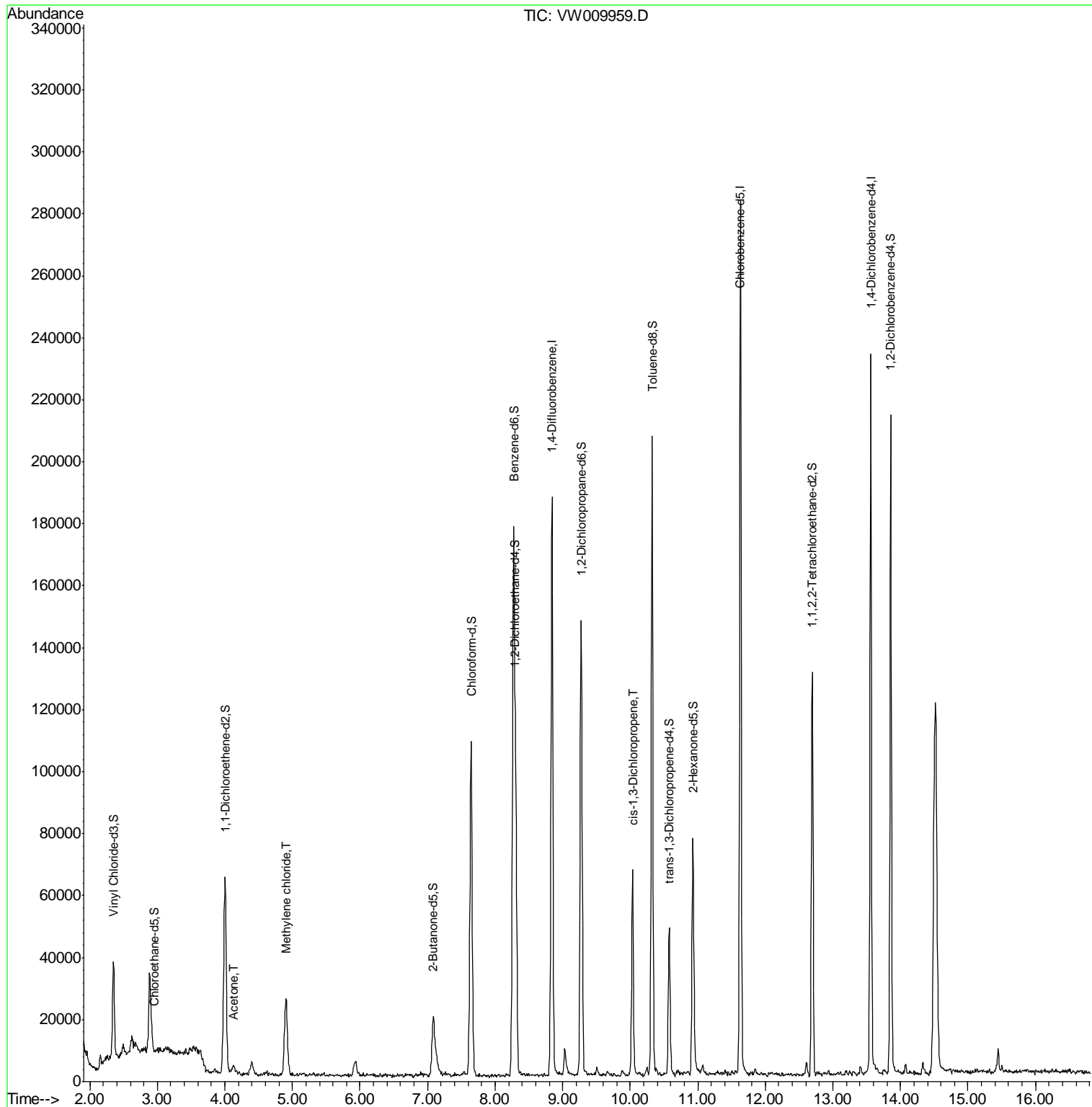
Target Compounds	R.T.	QIon	Response	Conc	Units	Ovalue
13) Acetone	4.12	43	3984	6.225	ug/L	97
16) Methylene chloride	4.91	84	16888	6.811	ug/L	95
42) cis-1,3-Dichloropropene	10.03	75	2012	0.578	ug/L #	78

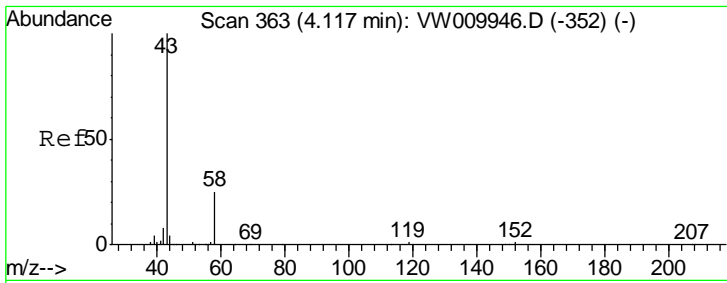
(#) = qualifier out of range (m) = manual integration (+) = signals summed

Data Path : Z:\VOASRV\HPCHEM1\MSVOA W\DATA\VW041119\
 Data File : VW009959.D
 Acq On : 12 Apr 2019 15:27
 Operator : SY/VA
 Sample : K2278-18
 Misc : 5.38G/10ML/MSVOA W/SOIL
 ALS Vial : 2 Sample Multiplier: 1

Instrument :
 MSVOA_W
 ClientSampleId :

Quant Time: Apr 13 00:00:38 2019
 Quant Method : Z:\VOASRV\HPCHEM1\MSVOA_W\METHOD\SOM2WLM040319S.M
 Quant Title : VOC Analysis
 QLast Update : Fri Apr 12 23:54:39 2019
 Response via : Initial Calibration

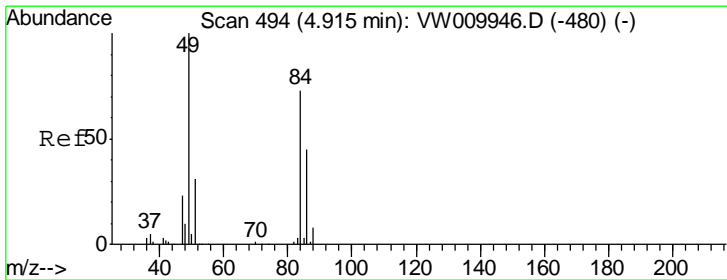
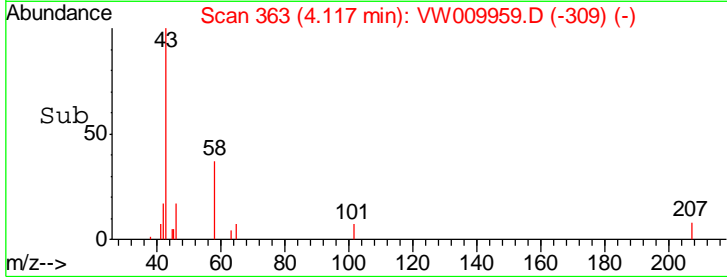
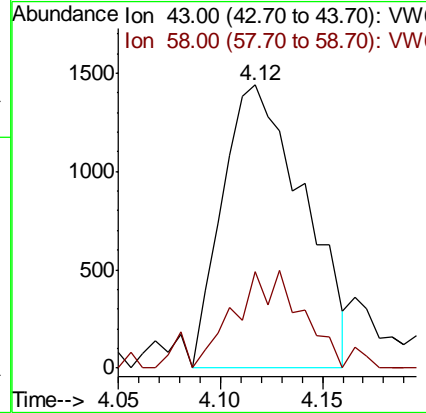
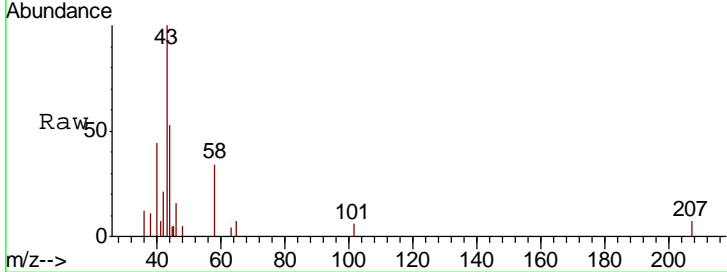




#13
 Acetone
 Concen: 6.225 ug/L
 RT: 4.12 min Scan# 363
 Delta R.T. 0.00 min
 Lab File: VW009959.D
 Acq: 12 Apr 2019 15:27

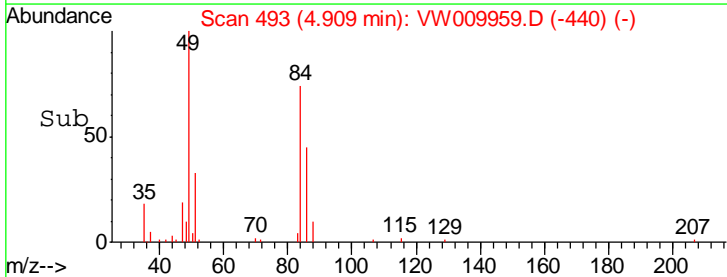
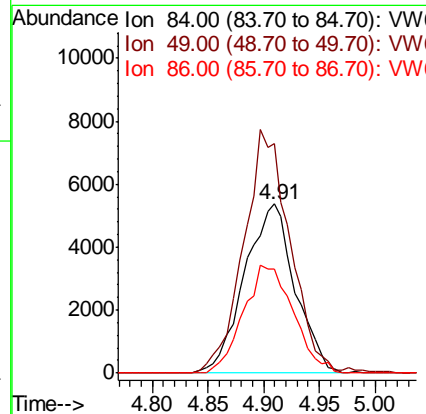
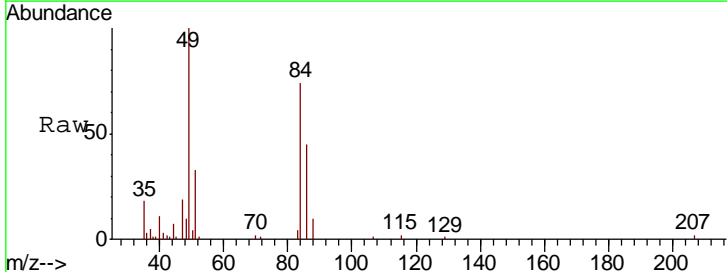
Instrument :
 MSVOA_W
 ClientSampled :

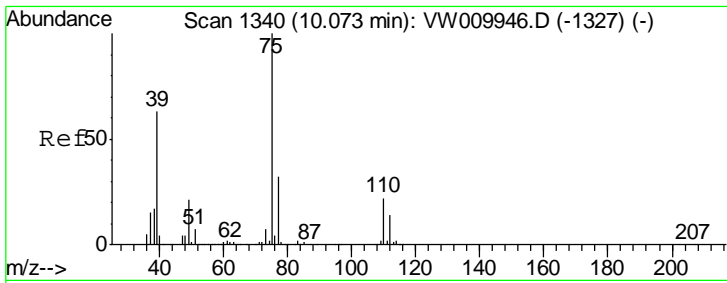
Tgt Ion	Resp	Lower	Upper
43	3984		
58	27.9	0.0	53.0



#16
 Methylene chloride
 Concen: 6.811 ug/L
 RT: 4.91 min Scan# 493
 Delta R.T. -0.01 min
 Lab File: VW009959.D
 Acq: 12 Apr 2019 15:27

Tgt Ion	Resp	Lower	Upper
84	16888		
49	135.6	98.3	182.5
86	61.5	46.4	86.2





#42
 cis-1,3-Dichloropropene
 Concen: 0.578 ug/L
 RT: 10.03 min Scan# 1333
 Delta R.T. -0.04 min
 Lab File: VW009959.D
 Acq: 12 Apr 2019 15:27

Instrument :
 MSVOA_W
 ClientSampled :

Tot Ion: 75 Resp: 2012
 Ion Ratio Lower Upper
 75 100
 77 42.0 21.0 39.0#

