

Data File : VW009970.D
 Acq On : 13 Apr 2019 18:21
 Operator : SY/VA
 Sample : VSTDCCC025EC
 Misc : 5.00G/10ML/MSVOA_W/SOIL
 ALS Vial : 10 Sample Multiplier: 1

Instrument :
 MSVOA_W
 ClientSampleId :
 VSTD02502

Quant Time: Apr 13 21:34:13 2019
 Quant Method : Z:\VOASRV\HPCHEM1\MSVOA_W\METHOD\SOM2WLM040319S.M
 Quant Title : VOC Analysis
 QLast Update : Sat Apr 13 21:30:51 2019
 Response via : Initial Calibration

| Internal Standards | R.T. | QIon | Response | Conc | Units | Dev(Min) |
|----------------------------|-------|------|----------|-------|-------|----------|
| 1) 1,4-Difluorobenzene | 8.84 | 114 | 507191 | 25.00 | ug/L | 0.00 |
| 28) Chlorobenzene-d5 | 11.63 | 117 | 488904 | 25.00 | ug/L | 0.00 |
| 60) 1,4-Dichlorobenzene-d4 | 13.56 | 152 | 251415 | 25.00 | ug/L | 0.00 |

System Monitoring Compounds

| | | | | | | |
|--------------------------------|--------|-------|----------|----------|------|----------|
| 4) Vinyl Chloride-d3 | 2.35 | 65 | 143780 | 21.66 | ug/L | 0.00 |
| Spiked Amount | 25.000 | Range | 30 - 150 | Recovery | = | 86.64% |
| 7) Chloroethane-d5 | 2.89 | 69 | 127627 | 20.99 | ug/L | 0.00 |
| Spiked Amount | 25.000 | Range | 30 - 150 | Recovery | = | 83.96% |
| 10) 1,1-Dichloroethene-d2 | 4.01 | 63 | 378625 | 26.53 | ug/L | 0.00 |
| Spiked Amount | 25.000 | Range | 45 - 110 | Recovery | = | 106.12% |
| 20) 2-Butanone-d5 | 7.08 | 46 | 153571 | 71.27 | ug/L | 0.00 |
| Spiked Amount | 50.000 | Range | 20 - 135 | Recovery | = | 142.54%# |
| 24) Chloroform-d | 7.65 | 84 | 368670 | 26.64 | ug/L | 0.00 |
| Spiked Amount | 25.000 | Range | 40 - 150 | Recovery | = | 106.56% |
| 26) 1,2-Dichloroethane-d4 | 8.31 | 65 | 227069 | 26.72 | ug/L | 0.00 |
| Spiked Amount | 25.000 | Range | 70 - 130 | Recovery | = | 106.88% |
| 29) Benzene-d6 | 8.27 | 84 | 683506 | 26.63 | ug/L | 0.00 |
| Spiked Amount | 25.000 | Range | 20 - 135 | Recovery | = | 106.52% |
| 33) 1,2-Dichloropropane-d6 | 9.27 | 67 | 211833 | 26.72 | ug/L | 0.00 |
| Spiked Amount | 25.000 | Range | 70 - 120 | Recovery | = | 106.88% |
| 37) Toluene-d8 | 10.32 | 98 | 622362 | 26.23 | ug/L | 0.00 |
| Spiked Amount | 25.000 | Range | 30 - 130 | Recovery | = | 104.92% |
| 38) trans-1,3-Dichloropropene- | 10.58 | 79 | 95163 | 25.17 | ug/L | 0.00 |
| Spiked Amount | 25.000 | Range | 30 - 135 | Recovery | = | 100.68% |
| 39) 2-Hexanone-d5 | 10.93 | 63 | 108920 | 72.90 | ug/L | 0.00 |
| Spiked Amount | 50.000 | Range | 20 - 135 | Recovery | = | 145.80%# |
| 48) 1,1,2,2-Tetrachloroethane- | 12.69 | 84 | 219944 | 29.84 | ug/L | 0.00 |
| Spiked Amount | 25.000 | Range | 45 - 120 | Recovery | = | 119.36% |
| 61) 1,2-Dichlorobenzene-d4 | 13.86 | 152 | 220495 | 24.99 | ug/L | 0.00 |
| Spiked Amount | 25.000 | Range | 75 - 120 | Recovery | = | 99.96% |

Target Compounds

| | | | | | | Qvalue |
|--------------------------------|------|-----|--------|--------|------|--------|
| 2) Dichlorodifluoromethane | 2.01 | 85 | 162784 | 24.365 | ug/L | 87 |
| 3) Chloromethane | 2.21 | 50 | 158910 | 23.015 | ug/L | 99 |
| 5) Vinyl chloride | 2.37 | 62 | 201814 | 22.787 | ug/L | 96 |
| 6) Bromomethane | 2.78 | 94 | 127682 | 20.835 | ug/L | 99 |
| 8) Chloroethane | 2.92 | 64 | 131682 | 22.654 | ug/L | 97 |
| 9) Trichlorofluoromethane | 3.25 | 101 | 132918 | 24.465 | ug/L | 98 |
| 11) 1,1,2-Trichloro-1,2,2-trif | 4.05 | 101 | 199087 | 28.172 | ug/L | 96 |
| 12) 1,1-Dichloroethene | 4.03 | 96 | 192663 | 28.600 | ug/L | 90 |
| 13) Acetone | 4.12 | 43 | 140624 | 60.905 | ug/L | 98 |
| 14) Carbon disulfide | 4.37 | 76 | 511214 | 24.414 | ug/L | 98 |
| 15) Methyl Acetate | 4.67 | 43 | 145132 | 34.474 | ug/L | 99 |
| 16) Methylene chloride | 4.91 | 84 | 202122 | 22.596 | ug/L | 99 |
| 17) Methyl tert-butyl Ether | 5.42 | 73 | 275833 | 29.723 | ug/L | 98 |
| 18) trans-1,2-Dichloroethene | 5.41 | 96 | 195552 | 27.912 | ug/L | 96 |
| 19) 1,1-Dichloroethane | 6.21 | 63 | 400846 | 29.814 | ug/L | 97 |
| 21) 2-Butanone | 7.17 | 43 | 213997 | 72.875 | ug/L | 100 |
| 22) cis-1,2-Dichloroethene | 7.16 | 96 | 218906 | 29.215 | ug/L | 98 |

Data File : VW009970.D
 Acq On : 13 Apr 2019 18:21
 Operator : SY/VA
 Sample : VSTDCCC025EC
 Misc : 5.00G/10ML/MSVOA_W/SOIL
 ALS Vial : 10 Sample Multiplier: 1

Instrument :
 MSVOA_W
 ClientSampleId :
 VSTD02502

Quant Time: Apr 13 21:34:13 2019
 Quant Method : Z:\VOASRV\HPCHEM1\MSVOA_W\METHOD\SOM2WLM040319S.M
 Quant Title : VOC Analysis
 QLast Update : Sat Apr 13 21:30:51 2019
 Response via : Initial Calibration

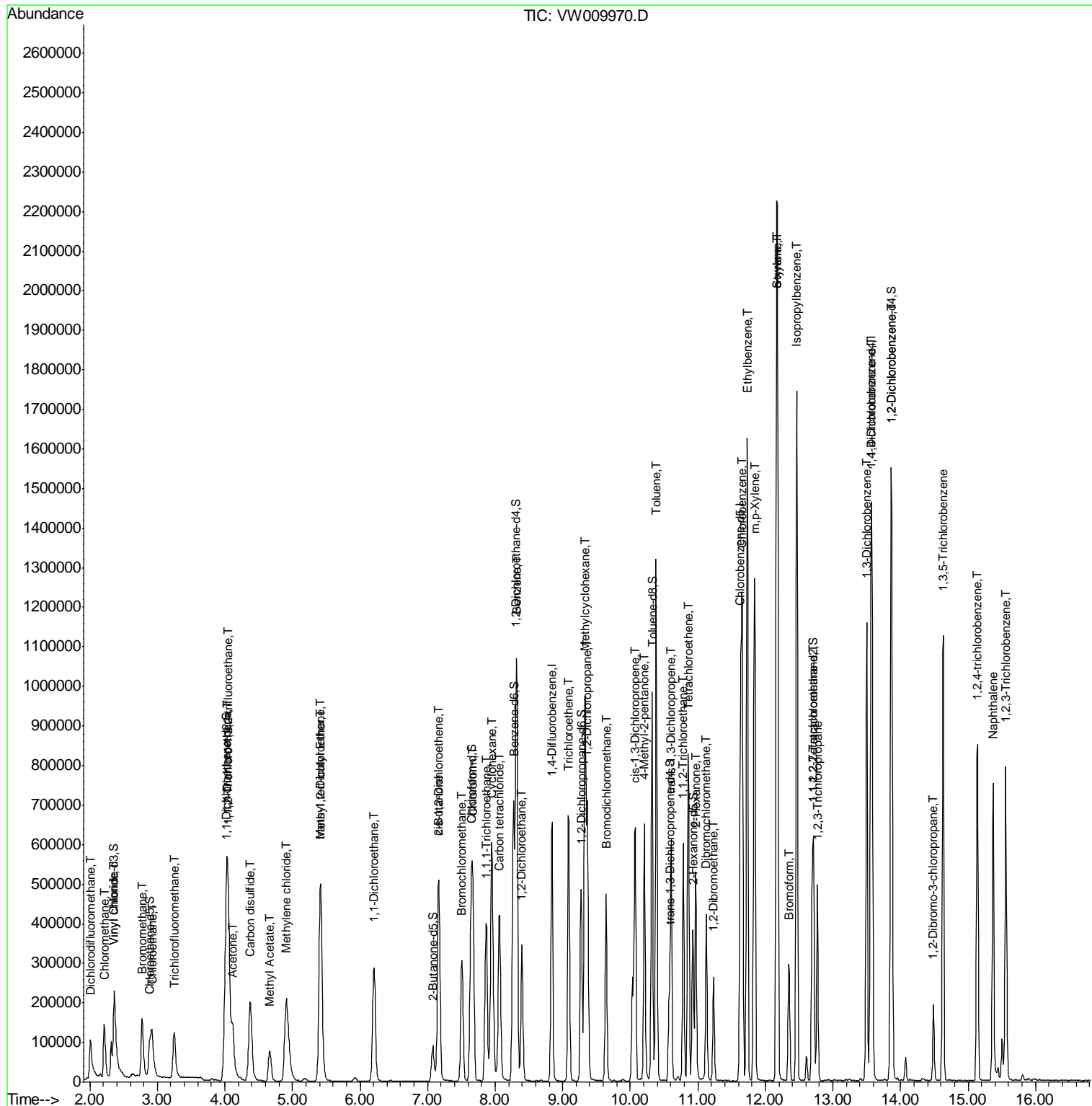
| Internal Standards | R.T. | QIon | Response | Conc | Units | Dev(Min) |
|--------------------------------|-------|------|----------|--------|-------|----------|
| 23) Bromochloromethane | 7.51 | 128 | 100437 | 29.216 | ug/L | 95 |
| 25) Chloroform | 7.67 | 83 | 411838 | 29.243 | ug/L | 100 |
| 27) 1,2-Dichloroethane | 8.40 | 62 | 316888 | 29.750 | ug/L | 97 |
| 30) Cyclohexane | 7.95 | 56 | 340197 | 29.482 | ug/L | 98 |
| 31) 1,1,1-Trichloroethane | 7.87 | 97 | 320072 | 28.859 | ug/L | 99 |
| 32) Carbon tetrachloride | 8.06 | 117 | 313792 | 28.220 | ug/L | 98 |
| 34) Benzene | 8.32 | 78 | 860313 | 29.247 | ug/L | 100 |
| 35) Trichloroethene | 9.09 | 95 | 220549 | 28.650 | ug/L | 99 |
| 36) Methylcyclohexane | 9.34 | 83 | 371912 | 29.386 | ug/L | 98 |
| 40) 1,2-Dichloropropane | 9.37 | 63 | 226464 | 30.076 | ug/L | 98 |
| 41) Bromodichloromethane | 9.64 | 83 | 303513 | 29.213 | ug/L | 99 |
| 42) cis-1,3-Dichloropropene | 10.07 | 75 | 339529 | 29.106 | ug/L | 97 |
| 43) 4-Methyl-2-pentanone | 10.21 | 43 | 435321 | 74.427 | ug/L | 100 |
| 44) Toluene | 10.38 | 91 | 926023 | 29.718 | ug/L | 99 |
| 45) trans-1,3-Dichloropropene | 10.60 | 75 | 303101 | 30.138 | ug/L | 97 |
| 46) 1,1,2-Trichloroethane | 10.79 | 97 | 175553 | 31.061 | ug/L | 98 |
| 47) Tetrachloroethene | 10.86 | 164 | 170111 | 28.058 | ug/L | 98 |
| 49) 2-Hexanone | 10.97 | 43 | 336212 | 77.200 | ug/L | 100 |
| 50) Dibromochloromethane | 11.13 | 129 | 202961 | 29.230 | ug/L | 97 |
| 51) 1,2-Dibromoethane | 11.23 | 107 | 172337 | 30.423 | ug/L | 99 |
| 52) Chlorobenzene | 11.66 | 112 | 575322 | 28.683 | ug/L | 99 |
| 53) Ethylbenzene | 11.73 | 91 | 1056541 | 29.765 | ug/L | 100 |
| 54) m,p-Xylene | 11.84 | 106 | 389712 | 29.684 | ug/L | 99 |
| 55) o-xylene | 12.16 | 106 | 370960 | 29.668 | ug/L | 100 |
| 56) Styrene | 12.18 | 104 | 654772 | 30.180 | ug/L | 100 |
| 57) Isopropylbenzene | 12.46 | 105 | 1032100 | 30.145 | ug/L | 99 |
| 58) 1,1,2,2-Tetrachloroethane | 12.71 | 83 | 251888 | 33.143 | ug/L | 98 |
| 59) 1,2,3-Trichloropropane | 12.77 | 75 | 192259 | 33.984 | ug/L | 98 |
| 62) Bromoform | 12.35 | 173 | 127685 | 28.885 | ug/L | 99 |
| 63) 1,3-Dichlorobenzene | 13.50 | 146 | 429732 | 27.631 | ug/L | 99 |
| 64) 1,4-Dichlorobenzene | 13.58 | 146 | 456679 | 27.536 | ug/L | 99 |
| 65) 1,2-Dichlorobenzene | 13.87 | 146 | 417506 | 28.060 | ug/L | 98 |
| 66) 1,2-Dibromo-3-chloropropan | 14.49 | 75 | 46048 | 31.794 | ug/L | 97 |
| 67) 1,3,5-Trichlorobenzene | 14.63 | 180 | 323253 | 28.013 | ug/L | 99 |
| 68) 1,2,4-trichlorobenzene | 15.14 | 180 | 253807 | 27.388 | ug/L | 99 |
| 69) Naphthalene | 15.37 | 128 | 601291 | 32.282 | ug/L | 100 |
| 70) 1,2,3-Trichlorobenzene | 15.56 | 180 | 251138 | 28.969 | ug/L | 99 |

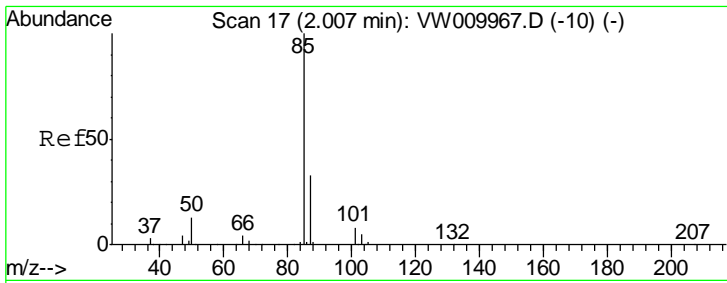
(#) = qualifier out of range (m) = manual integration (+) = signals summed

Data File : VW009970.D
Acq On : 13 Apr 2019 18:21
Operator : SY/VA
Sample : VSTDCCC025EC
Misc : 5.00G/10ML/MSVOA_W/SOIL
ALS Vial : 10 Sample Multiplier: 1

Instrument :
MSVOA_W
Client Sampled :
VSTD02502

Quant Time: Apr 13 21:34:13 2019
Quant Method : Z:\VOASRV\HPCHEM1\MSVOA_W\METHOD\SOM2WLM040319S.M
Quant Title : VOC Analysis
QLast Update : Sat Apr 13 21:30:51 2019
Response via : Initial Calibration

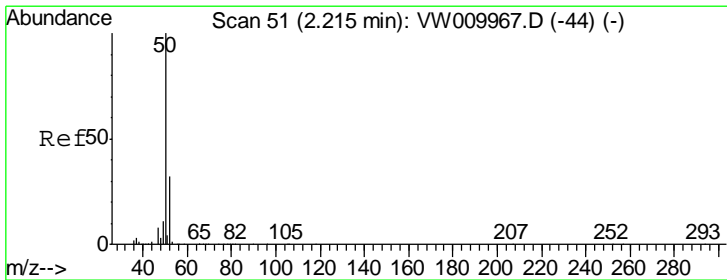
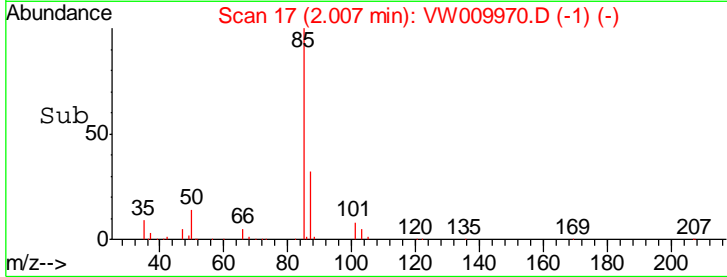
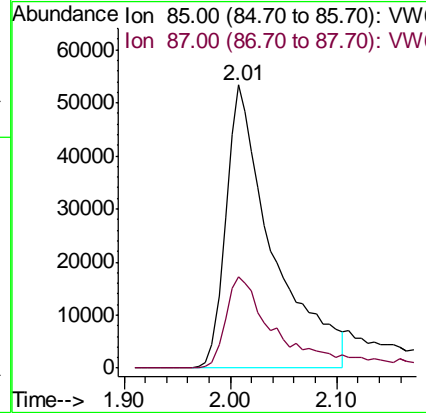
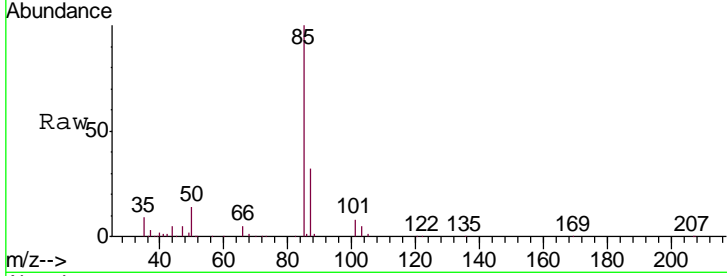




#2
 Dichlorodifluoromethane
 Concen: 24.365 ug/L
 RT: 2.01 min Scan# 17
 Delta R.T. 0.00 min
 Lab File: VW009970.D
 Acq: 13 Apr 2019 18:21

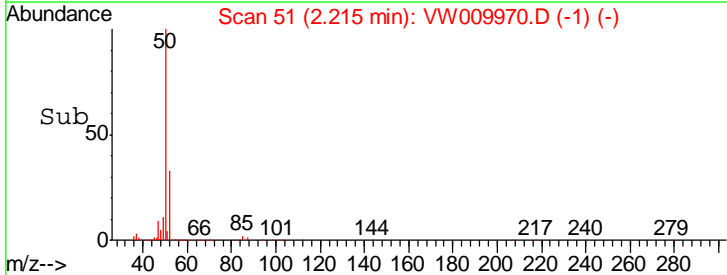
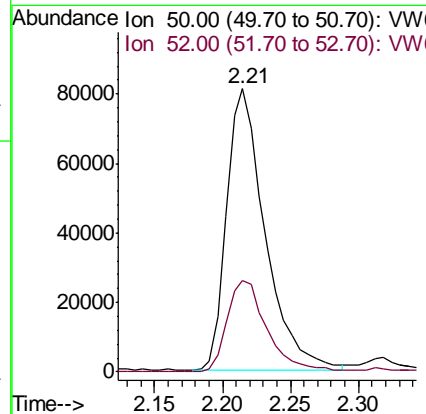
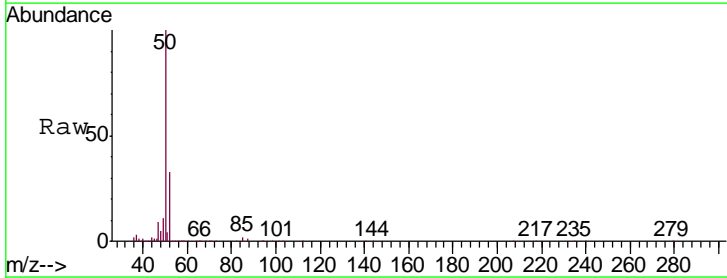
Instrument :
 MSVOA_W
 ClientSampled :
 VSTD02502

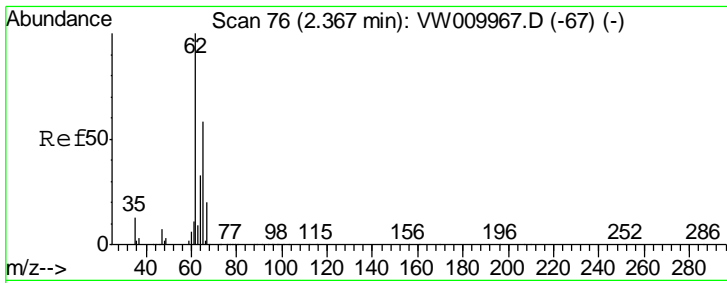
Tgt Ion: 85 Resp: 162784
 Ion Ratio Lower Upper
 85 100
 87 32.3 18.1 33.5



#3
 Chloromethane
 Concen: 23.015 ug/L
 RT: 2.21 min Scan# 51
 Delta R.T. 0.00 min
 Lab File: VW009970.D
 Acq: 13 Apr 2019 18:21

Tgt Ion: 50 Resp: 158910
 Ion Ratio Lower Upper
 50 100
 52 32.5 22.3 41.3

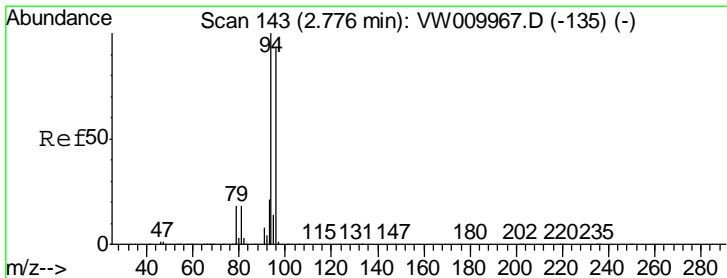
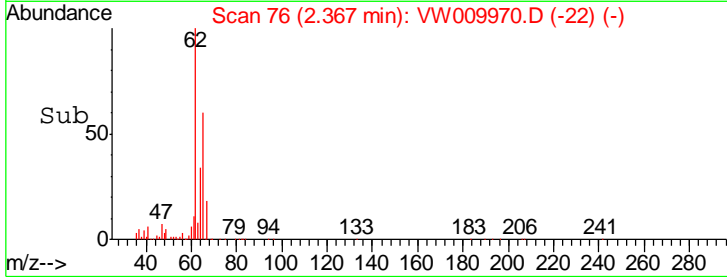
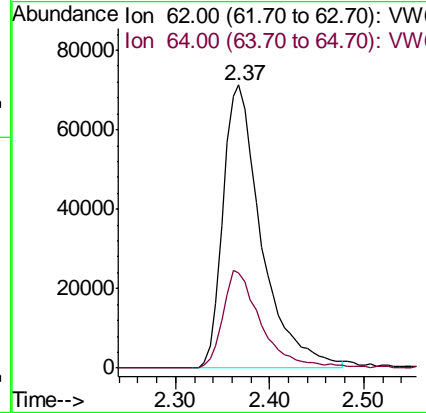
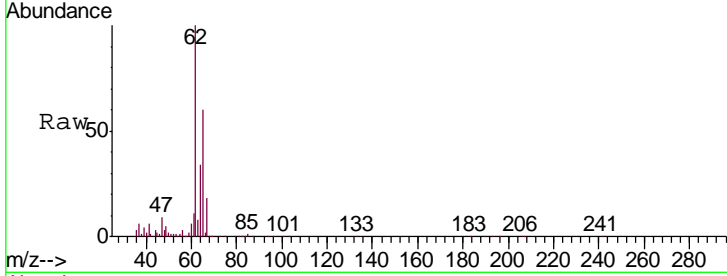




#5
 Vinyl chloride
 Concen: 22.787 ug/L
 RT: 2.37 min Scan# 76
 Delta R.T. 0.00 min
 Lab File: VW009970.D
 Acq: 13 Apr 2019 18:21

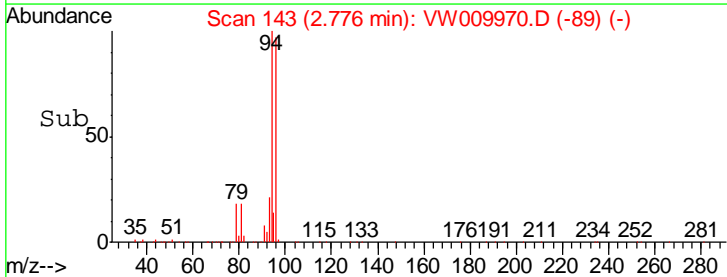
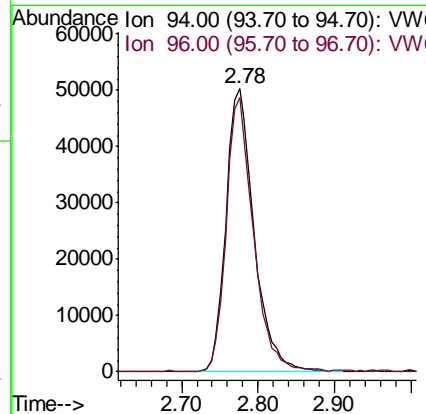
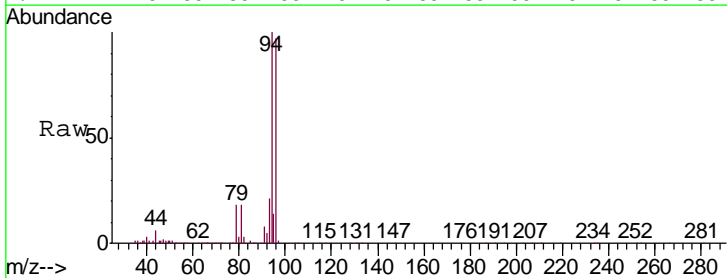
Instrument :
 MSVOA_W
 ClientSampled :
 VSTD02502

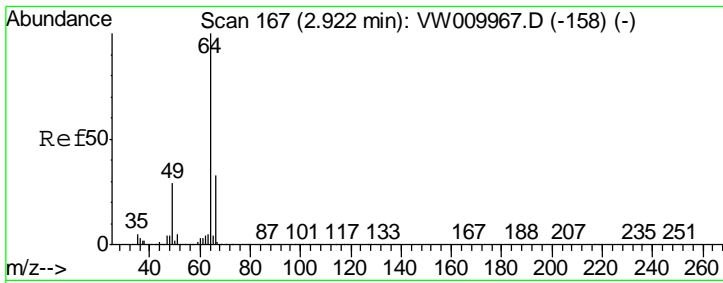
Tgt Ion: 62 Resp: 201814
 Ion Ratio Lower Upper
 62 100
 64 33.6 21.8 40.6



#6
 Bromomethane
 Concen: 20.835 ug/L
 RT: 2.78 min Scan# 143
 Delta R.T. 0.00 min
 Lab File: VW009970.D
 Acq: 13 Apr 2019 18:21

Tgt Ion: 94 Resp: 127682
 Ion Ratio Lower Upper
 94 100
 96 93.8 9.3 177.3

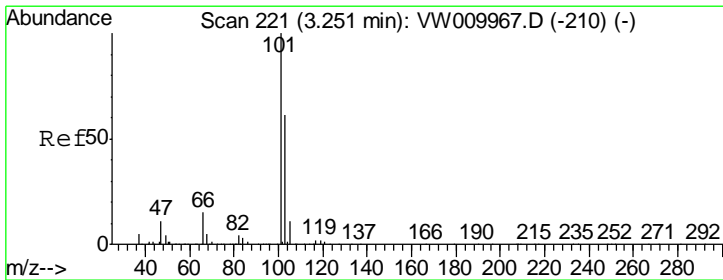
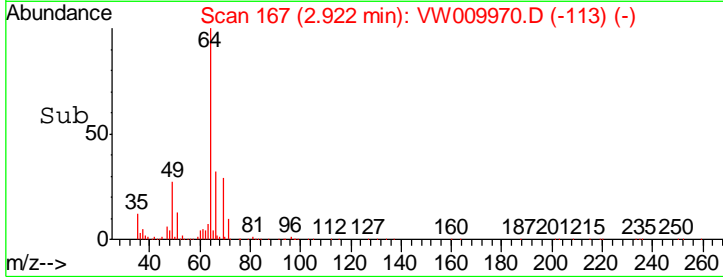
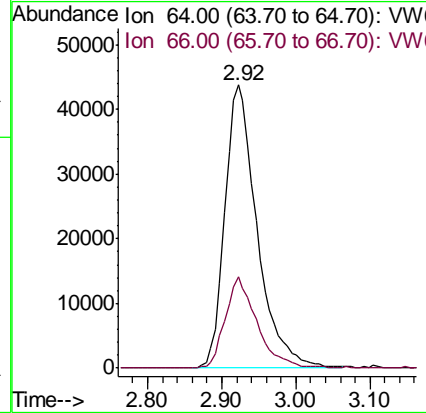
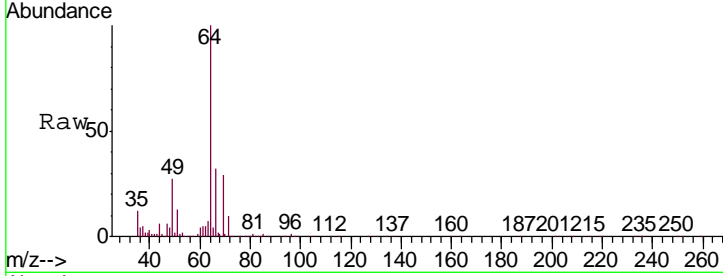




#8
 Chloroethane
 Concen: 22.654 ug/L
 RT: 2.92 min Scan# 167
 Delta R.T. 0.00 min
 Lab File: VW009970.D
 Acq: 13 Apr 2019 18:21

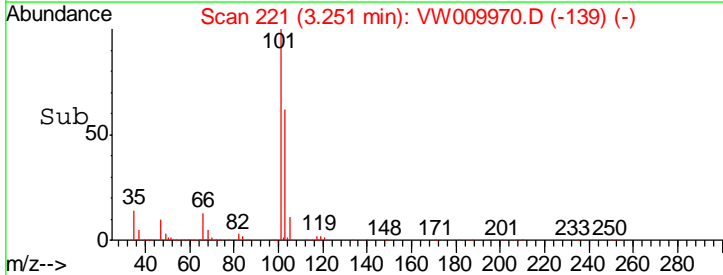
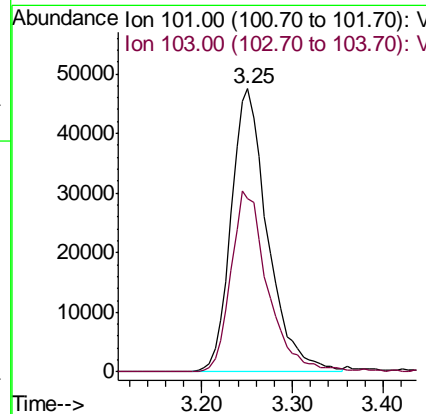
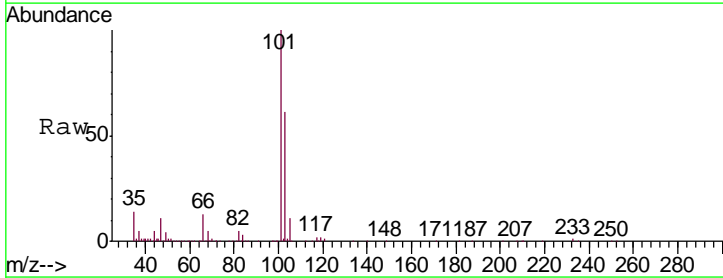
Instrument :
 MSVOA_W
 ClientSampleId :
 VSTD02502

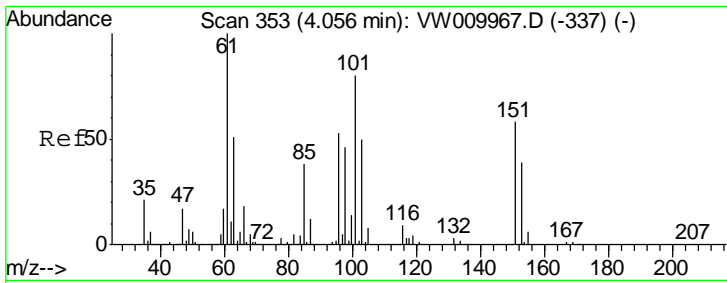
Tgt Ion: 64 Resp: 131682
 Ion Ratio Lower Upper
 64 100
 66 32.3 21.6 40.2



#9
 Trichlorofluoromethane
 Concen: 24.465 ug/L
 RT: 3.25 min Scan# 221
 Delta R.T. 0.00 min
 Lab File: VW009970.D
 Acq: 13 Apr 2019 18:21

Tgt Ion: 101 Resp: 132918
 Ion Ratio Lower Upper
 101 100
 103 62.5 45.1 83.7





#11

1,1,2-Trichloro-1,2,2-trifluoroethane

Concen: 28.172 ug/L

RT: 4.05 min Scan# 352

Delta R.T. -0.01 min

Lab File: VW009970.D

Acq: 13 Apr 2019 18:21

Instrument :

MSVOA_W

ClientSampled :

VSTD02502

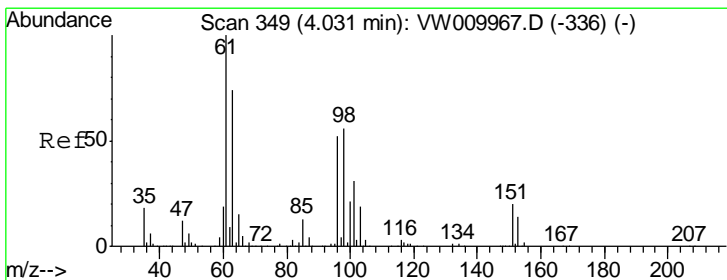
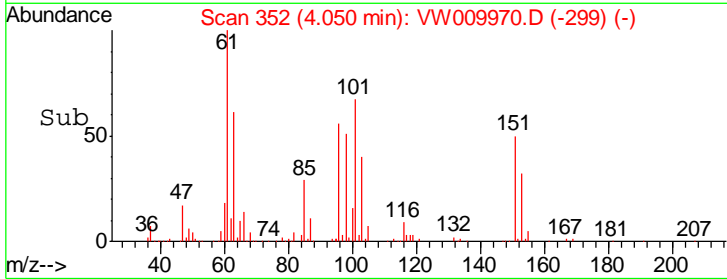
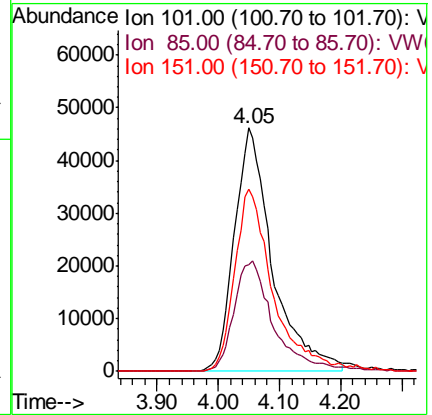
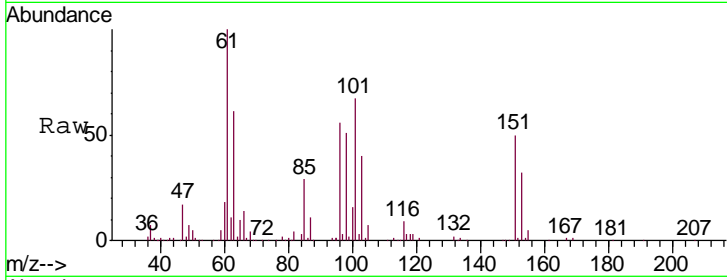
Tgt Ion:101 Resp: 199087

Ion Ratio Lower Upper

101 100

85 45.1 37.8 56.6

151 71.6 60.6 91.0



#12

1,1-Dichloroethene

Concen: 28.600 ug/L

RT: 4.03 min Scan# 349

Delta R.T. 0.00 min

Lab File: VW009970.D

Acq: 13 Apr 2019 18:21

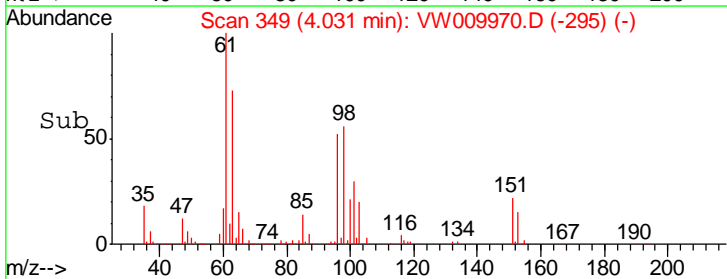
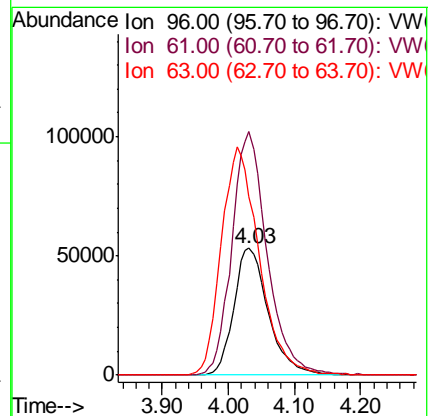
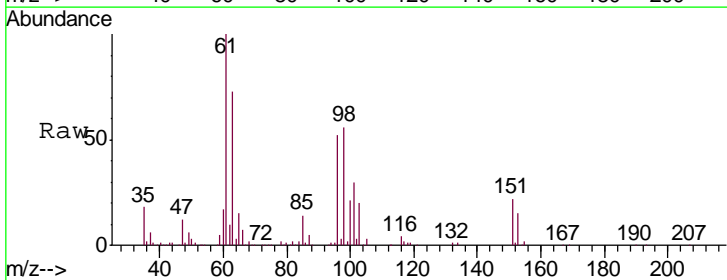
Tgt Ion: 96 Resp: 192663

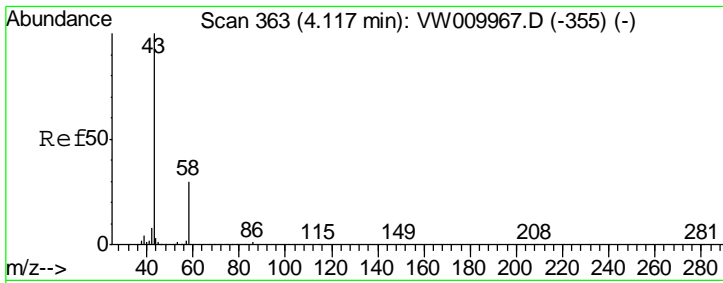
Ion Ratio Lower Upper

96 100

61 192.1 138.8 257.8

63 141.0 114.6 212.8

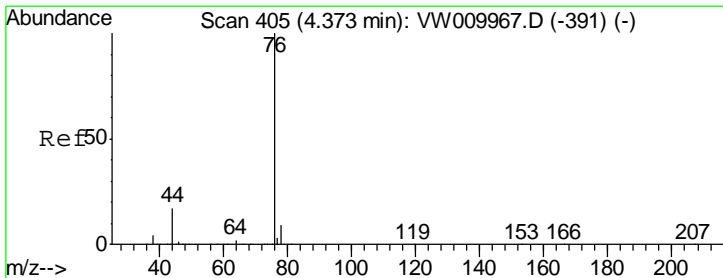
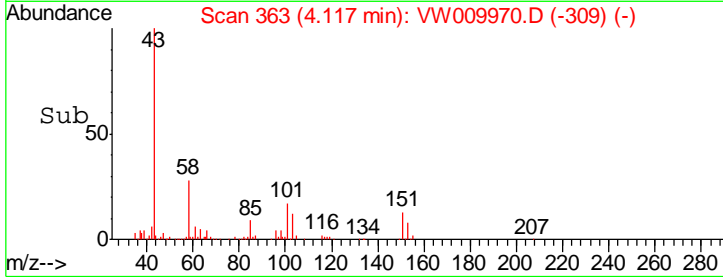
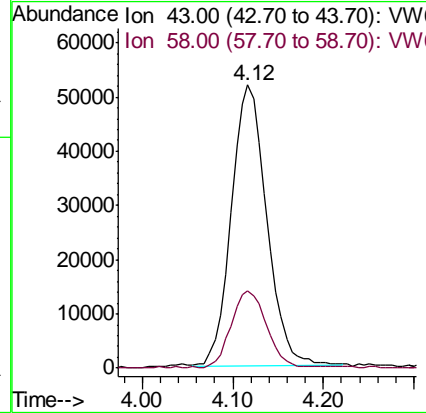
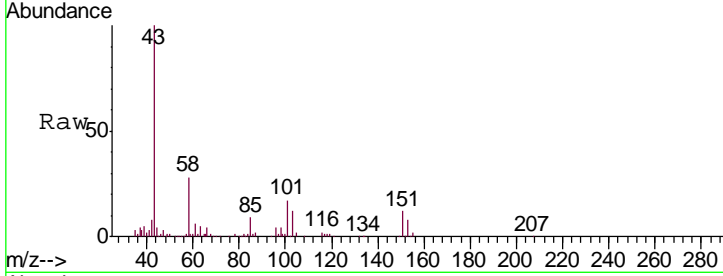




#13
 Acetone
 Concen: 60.905 ug/L
 RT: 4.12 min Scan# 363
 Delta R.T. 0.00 min
 Lab File: VW009970.D
 Acq: 13 Apr 2019 18:21

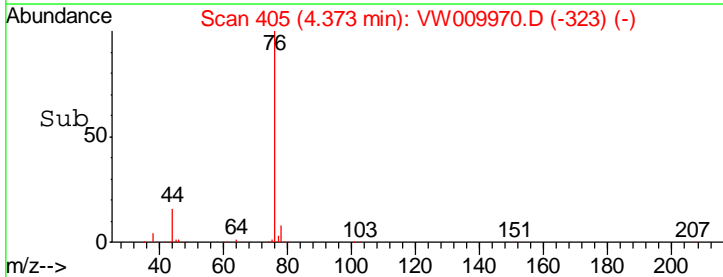
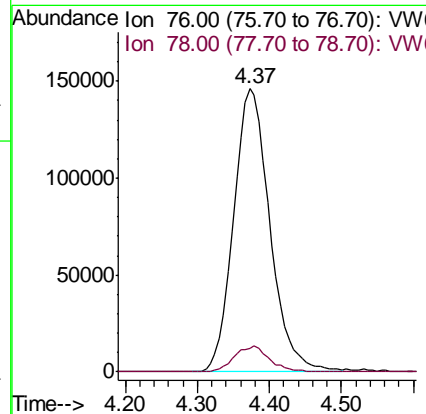
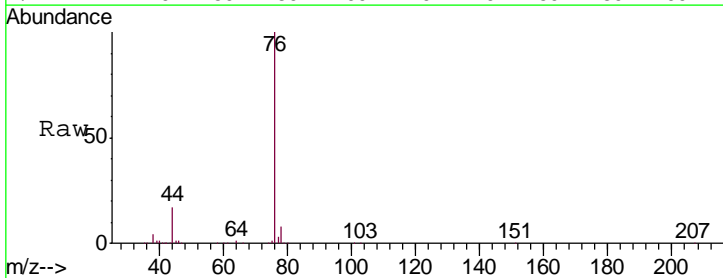
Instrument :
 MSVOA_W
 ClientSampled :
 VSTD02502

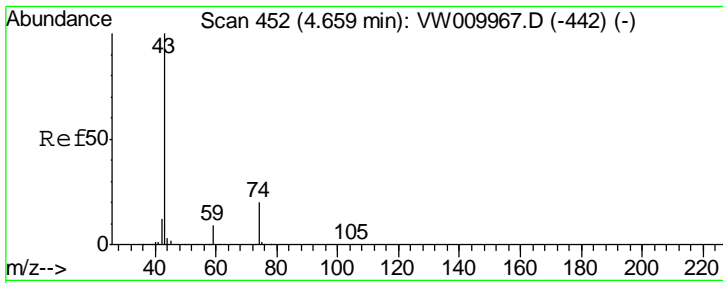
| Tgt Ion | Resp | Lower | Upper |
|---------|--------|-------|-------|
| 43 | 140624 | | |
| 58 | 27.3 | 0.0 | 53.0 |



#14
 Carbon disulfide
 Concen: 24.414 ug/L
 RT: 4.37 min Scan# 405
 Delta R.T. 0.00 min
 Lab File: VW009970.D
 Acq: 13 Apr 2019 18:21

| Tgt Ion | Resp | Lower | Upper |
|---------|--------|-------|-------|
| 76 | 511214 | | |
| 78 | 8.4 | 7.3 | 10.9 |

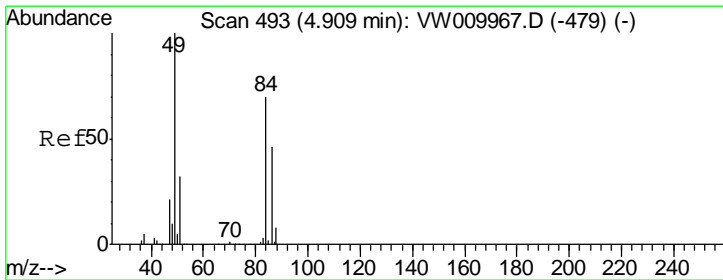
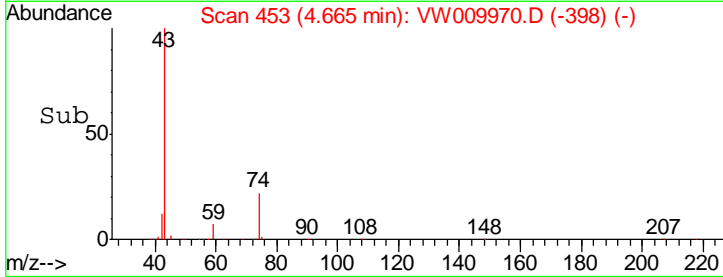
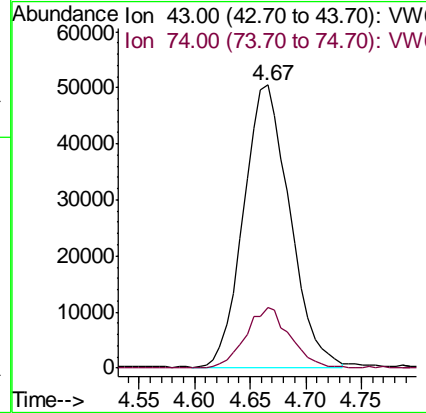
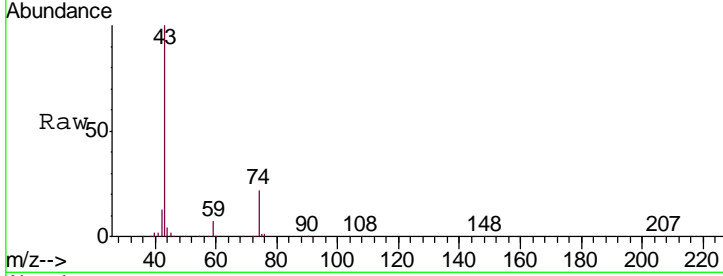




#15
 Methyl Acetate
 Concen: 34.474 ug/L
 RT: 4.67 min Scan# 453
 Delta R.T. 0.01 min
 Lab File: VW009970.D
 Acq: 13 Apr 2019 18:21

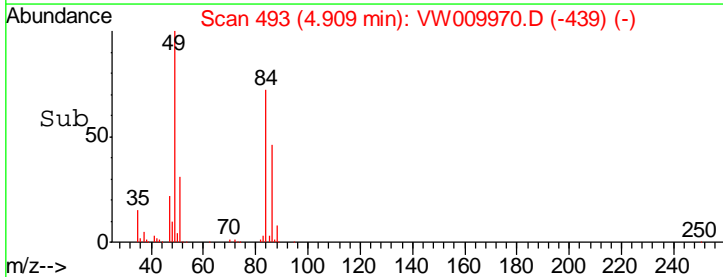
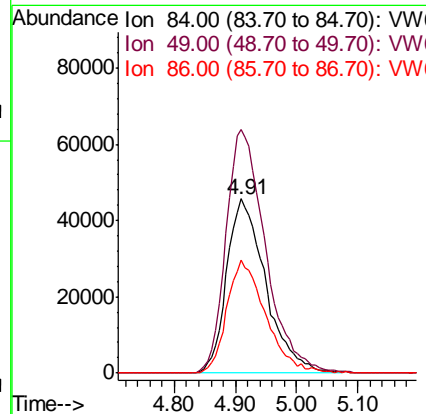
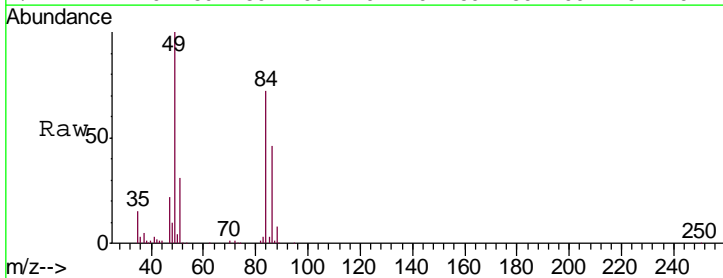
Instrument :
 MSVOA_W
 ClientSampled :
 VSTD02502

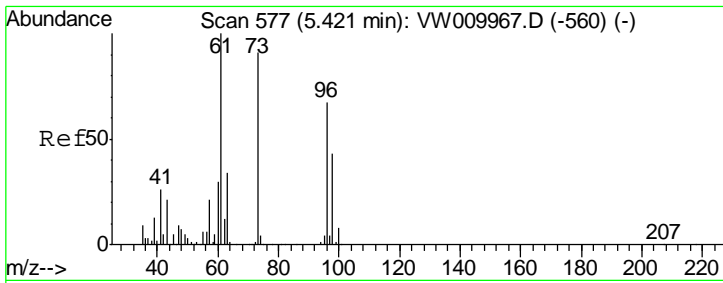
| Tgt Ion | Resp | Lower | Upper |
|---------|--------|-------|-------|
| 43 | 145132 | | |
| 74 | 20.8 | 17.2 | 25.8 |



#16
 Methylene chloride
 Concen: 22.596 ug/L
 RT: 4.91 min Scan# 493
 Delta R.T. 0.00 min
 Lab File: VW009970.D
 Acq: 13 Apr 2019 18:21

| Tgt Ion | Resp | Lower | Upper |
|---------|--------|-------|-------|
| 84 | 202122 | | |
| 49 | 139.6 | 98.3 | 182.5 |
| 86 | 64.7 | 46.4 | 86.2 |

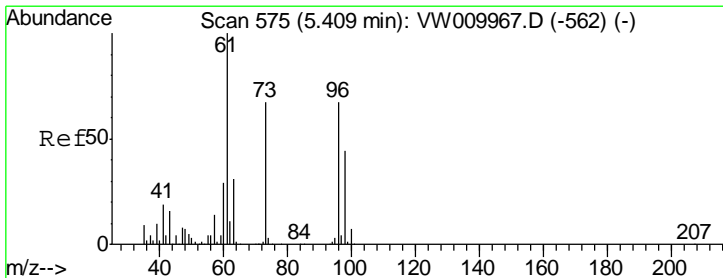
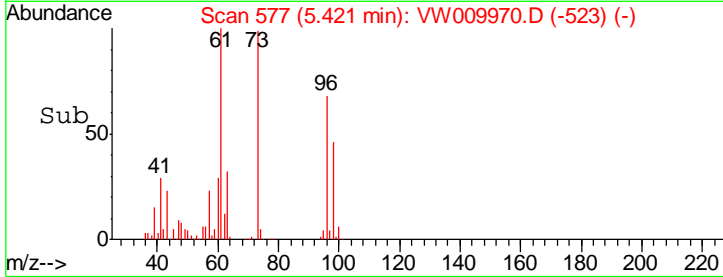
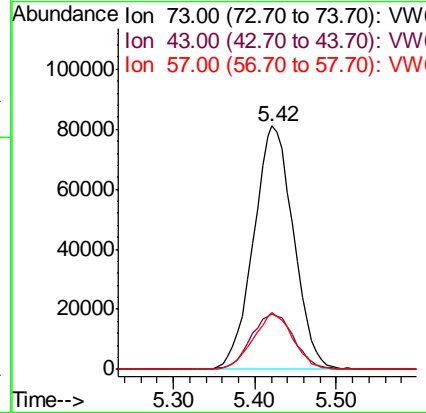
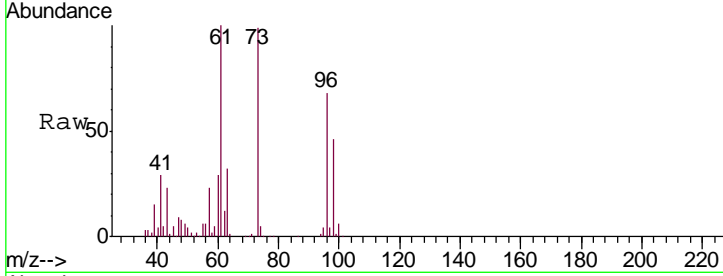




#17
 Methyl tert-butyl Ether
 Concen: 29.723 ug/L
 RT: 5.42 min Scan# 577
 Delta R.T. 0.00 min
 Lab File: VW009970.D
 Acq: 13 Apr 2019 18:21

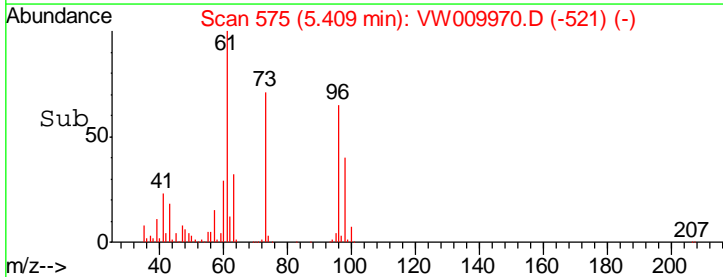
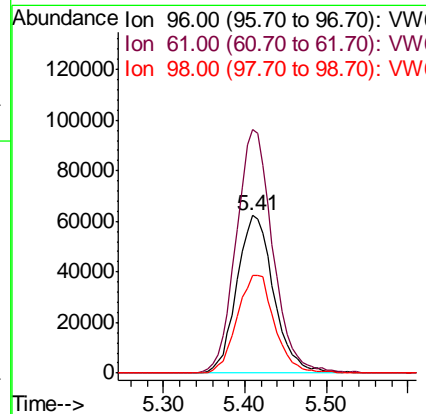
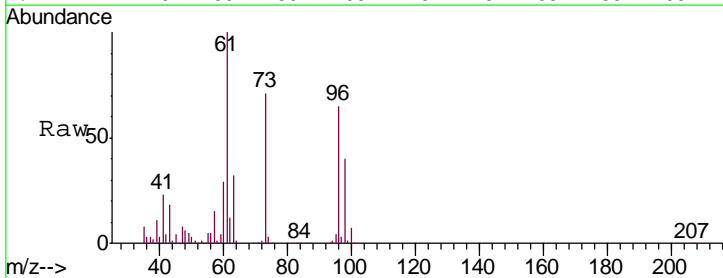
Instrument :
 MSVOA_W
 ClientSampled :
 VSTD02502

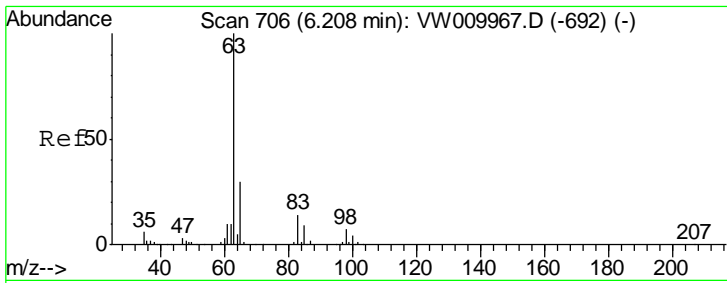
| Tgt Ion | Resp | Lower | Upper |
|---------|--------|-------|-------|
| 73 | 275833 | | |
| 73 | 100 | | |
| 43 | 24.2 | 20.2 | 30.2 |
| 57 | 23.1 | 17.8 | 26.8 |



#18
 trans-1,2-Dichloroethene
 Concen: 27.912 ug/L
 RT: 5.41 min Scan# 575
 Delta R.T. 0.00 min
 Lab File: VW009970.D
 Acq: 13 Apr 2019 18:21

| Tgt Ion | Resp | Lower | Upper |
|---------|--------|-------|-------|
| 96 | 195552 | | |
| 96 | 100 | | |
| 61 | 154.6 | 103.7 | 192.5 |
| 98 | 62.4 | 43.7 | 81.1 |

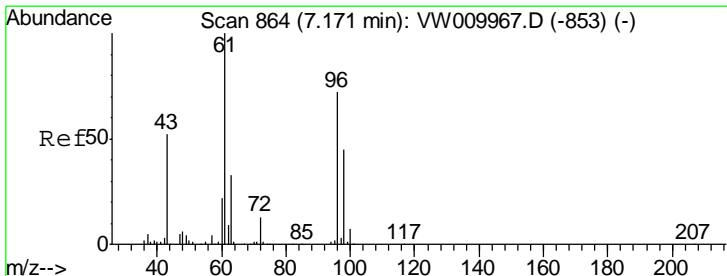
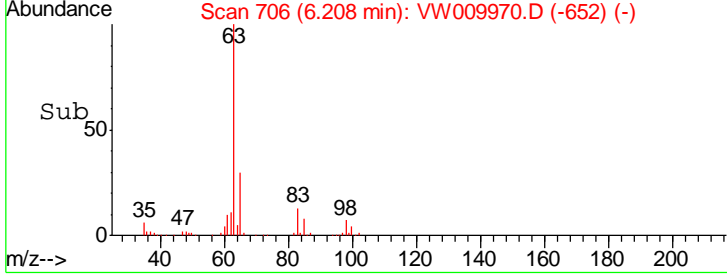
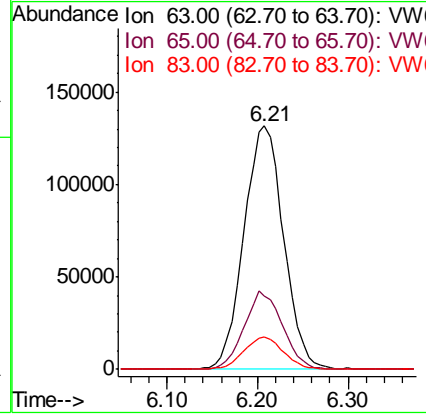
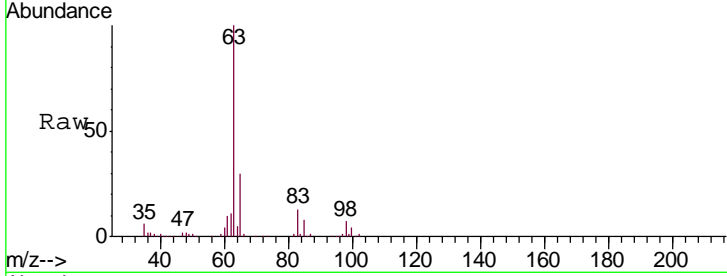




#19
 1,1-Dichloroethane
 Concen: 29.814 ug/L
 RT: 6.21 min Scan# 706
 Delta R.T. 0.00 min
 Lab File: VW009970.D
 Acq: 13 Apr 2019 18:21

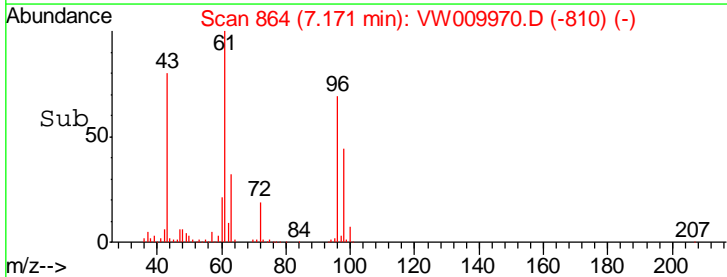
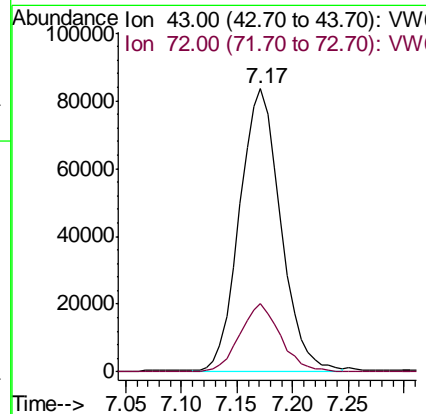
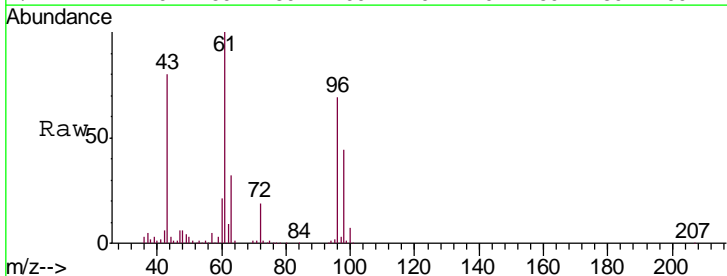
Instrument :
 MSVOA_W
ClientSampled :
 VSTD02502

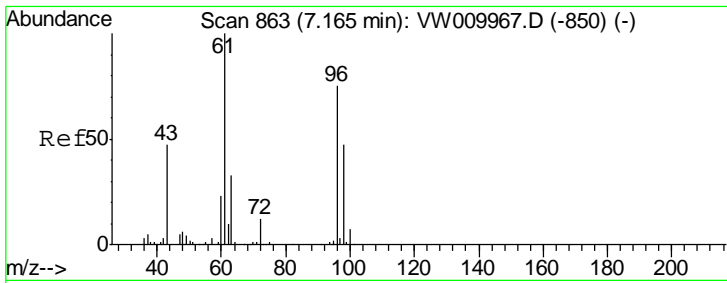
| Tgt Ion | Resp | Lower | Upper |
|---------|------|-------|-------|
| 63 | 100 | | |
| 65 | 30.1 | 22.6 | 42.0 |
| 83 | 13.2 | 9.8 | 18.2 |



#21
 2-Butanone
 Concen: 72.875 ug/L
 RT: 7.17 min Scan# 864
 Delta R.T. 0.00 min
 Lab File: VW009970.D
 Acq: 13 Apr 2019 18:21

| Tgt Ion | Resp | Lower | Upper |
|---------|------|-------|-------|
| 43 | 100 | | |
| 72 | 23.9 | 12.0 | 36.1 |

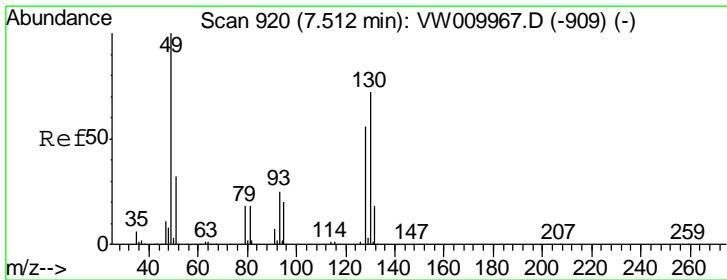
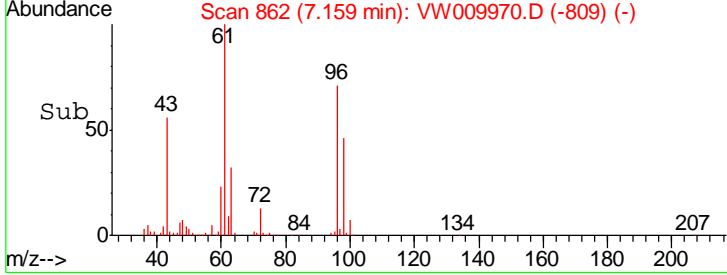
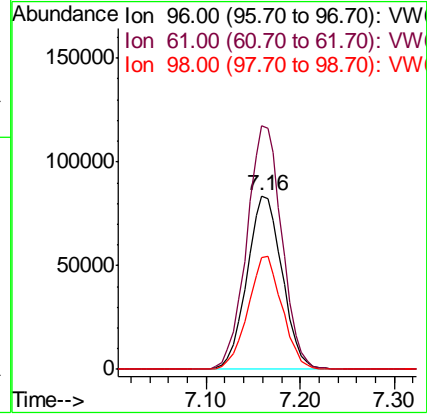
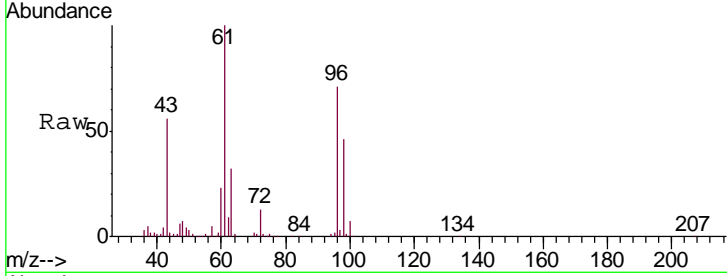




#22
 cis-1,2-Dichloroethene
 Concen: 29.215 ug/L
 RT: 7.16 min Scan# 862
 Delta R.T. -0.01 min
 Lab File: VW009970.D
 Acq: 13 Apr 2019 18:21

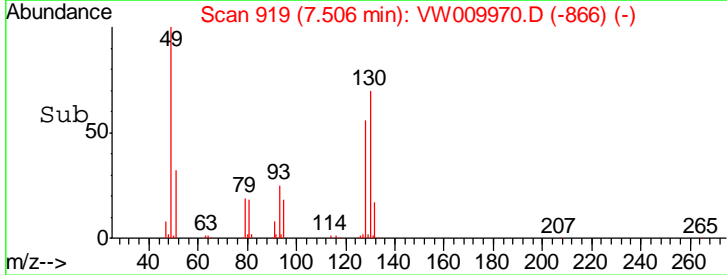
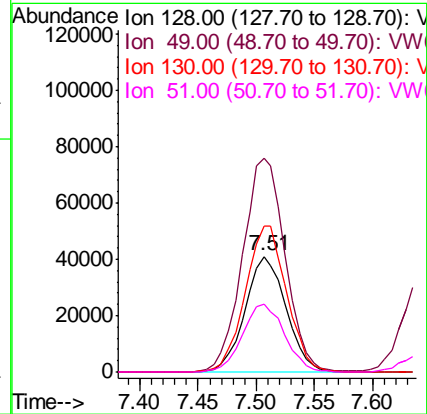
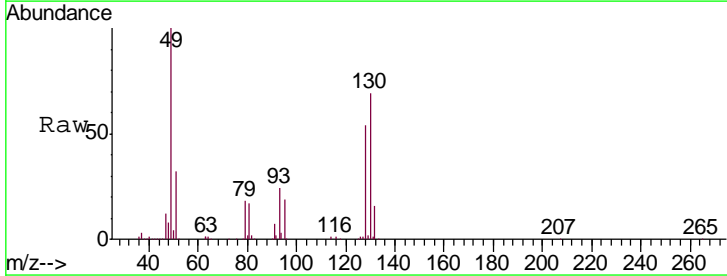
Instrument :
 MSVOA_W
 ClientSampled :
 VSTD02502

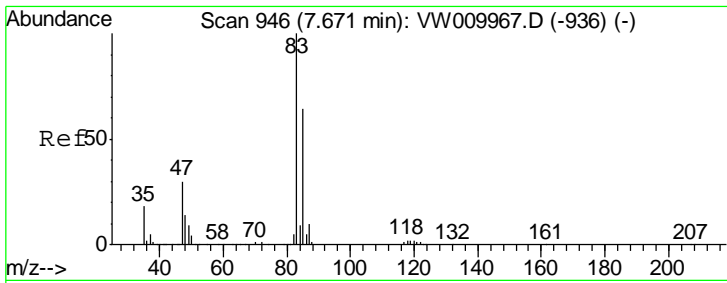
| Tgt Ion | Resp | Lower | Upper |
|---------|--------|-------|-------|
| 96 | 218906 | | |
| 61 | 140.5 | 96.8 | 179.8 |
| 98 | 64.6 | 43.5 | 80.9 |



#23
 Bromochloromethane
 Concen: 29.216 ug/L
 RT: 7.51 min Scan# 919
 Delta R.T. -0.01 min
 Lab File: VW009970.D
 Acq: 13 Apr 2019 18:21

| Tgt Ion | Resp | Lower | Upper |
|---------|--------|-------|-------|
| 128 | 100437 | | |
| 49 | 184.7 | 132.6 | 246.2 |
| 130 | 126.6 | 95.5 | 177.4 |
| 51 | 59.2 | 48.6 | 73.0 |

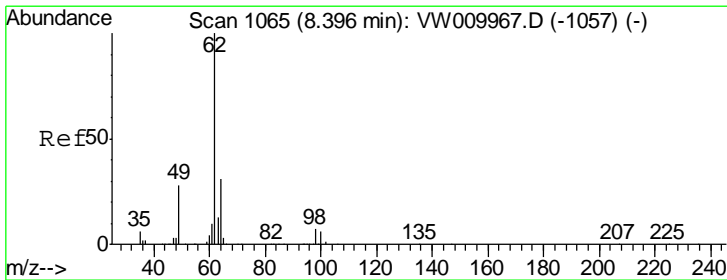
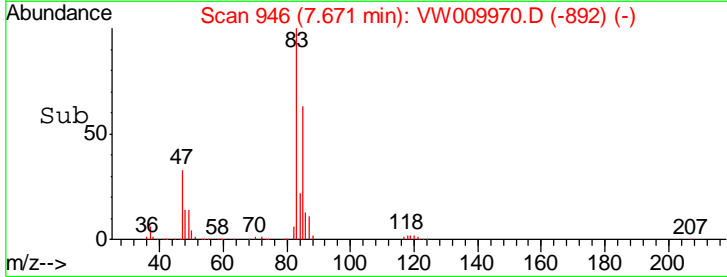
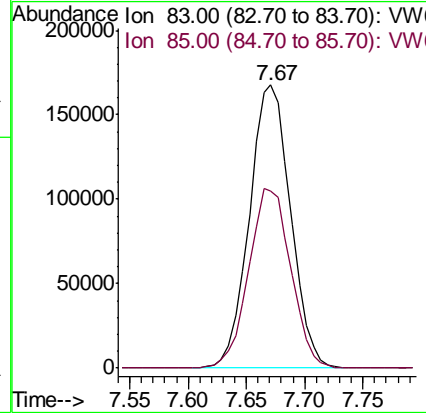
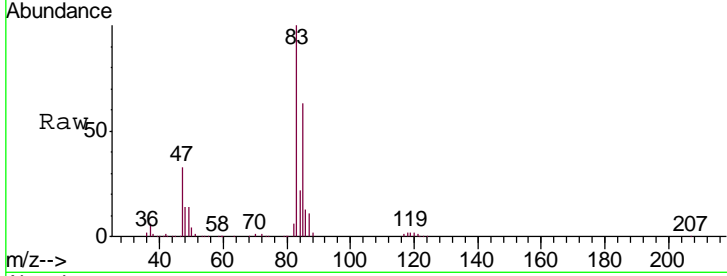




#25
 Chloroform
 Concen: 29.243 ug/L
 RT: 7.67 min Scan# 946
 Delta R.T. 0.00 min
 Lab File: VW009970.D
 Acq: 13 Apr 2019 18:21

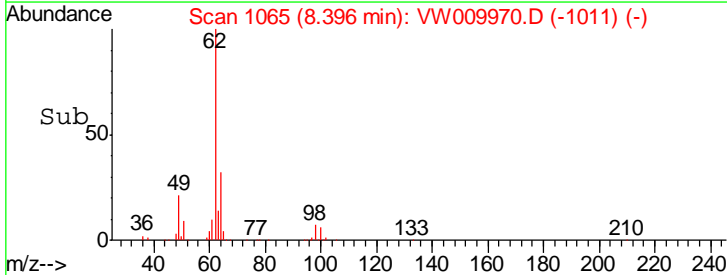
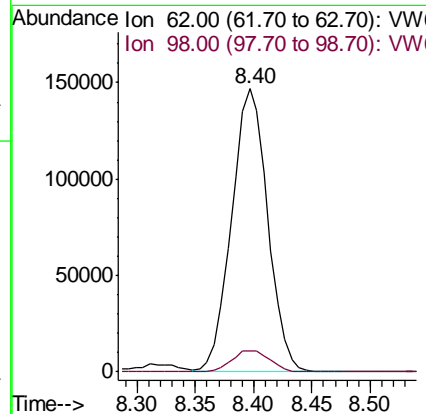
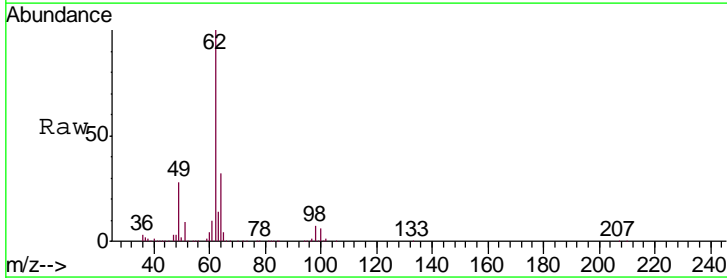
Instrument :
 MSVOA_W
 ClientSampled :
 VSTD02502

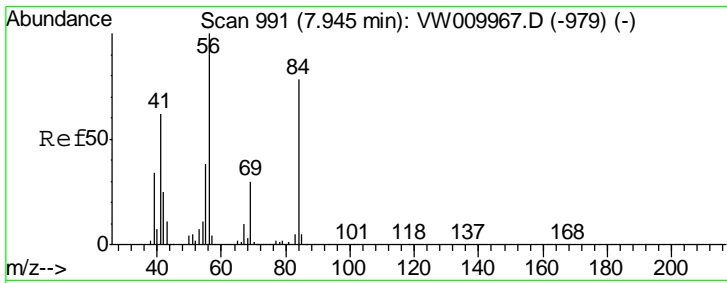
Tgt Ion: 83 Resp: 411838
 Ion Ratio Lower Upper
 83 100
 85 64.9 45.6 84.8



#27
 1,2-Dichloroethane
 Concen: 29.750 ug/L
 RT: 8.40 min Scan# 1065
 Delta R.T. 0.00 min
 Lab File: VW009970.D
 Acq: 13 Apr 2019 18:21

Tgt Ion: 62 Resp: 316888
 Ion Ratio Lower Upper
 62 100
 98 7.5 7.0 10.4



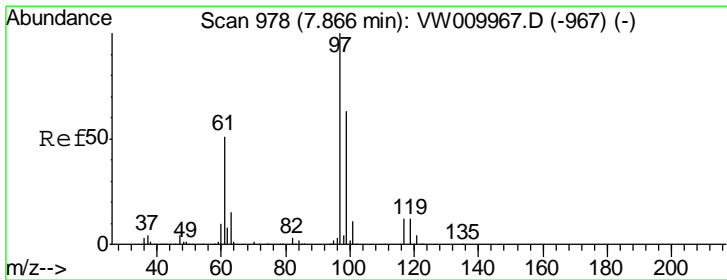
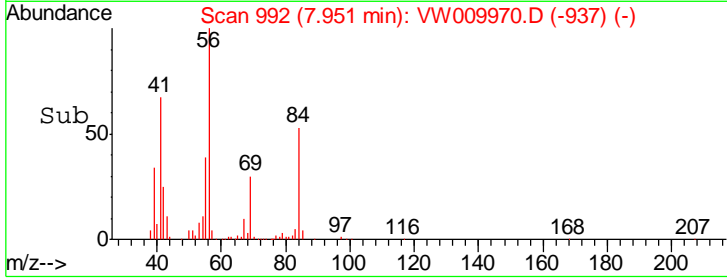
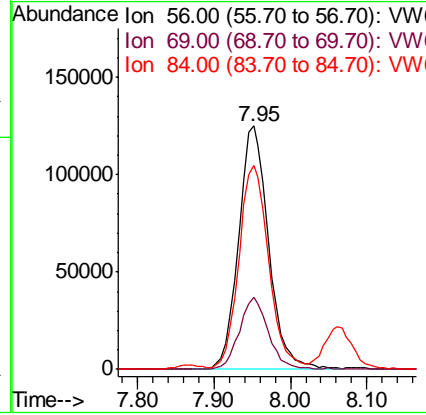
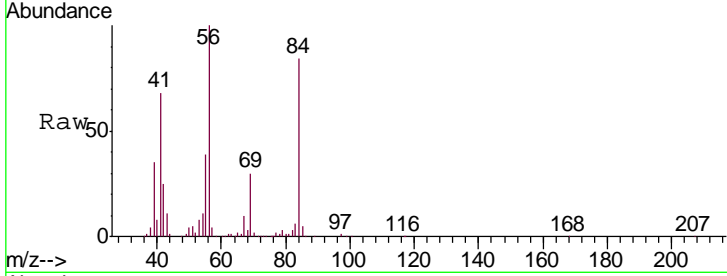


#30
 Cyclohexane
 Concen: 29.482 ug/L
 RT: 7.95 min Scan# 992
 Delta R.T. 0.01 min
 Lab File: VW009970.D
 Acq: 13 Apr 2019 18:21

Instrument :
 MSVOA_W
 ClientSampled :
 VSTD02502

Tgt Ion: 56 Resp: 340197

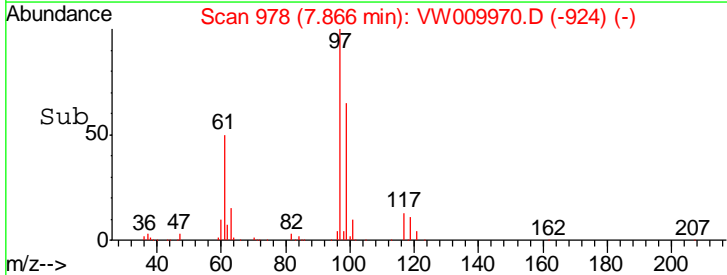
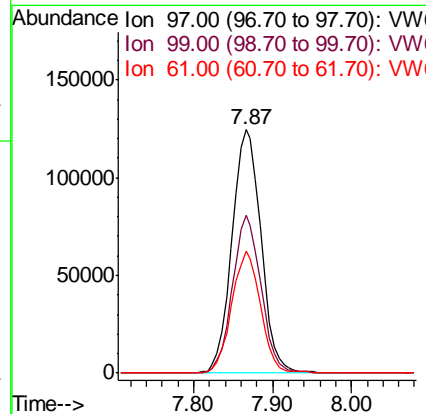
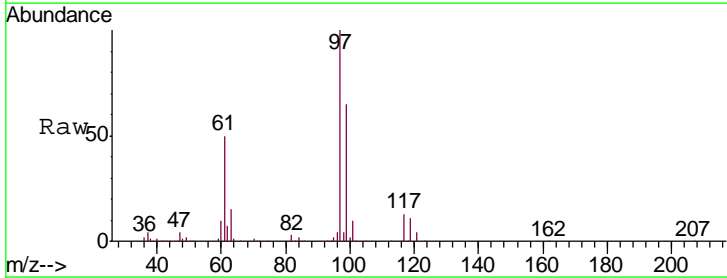
| Ion | Ratio | Lower | Upper |
|-----|-------|-------|-------|
| 56 | 100 | | |
| 69 | 28.3 | 23.4 | 35.2 |
| 84 | 83.2 | 67.7 | 101.5 |

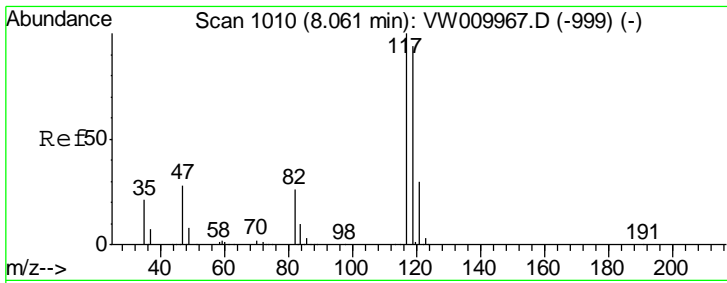


#31
 1,1,1-Trichloroethane
 Concen: 28.859 ug/L
 RT: 7.87 min Scan# 978
 Delta R.T. 0.00 min
 Lab File: VW009970.D
 Acq: 13 Apr 2019 18:21

Tgt Ion: 97 Resp: 320072

| Ion | Ratio | Lower | Upper |
|-----|-------|-------|-------|
| 97 | 100 | | |
| 99 | 63.5 | 50.8 | 76.2 |
| 61 | 49.8 | 38.6 | 57.8 |

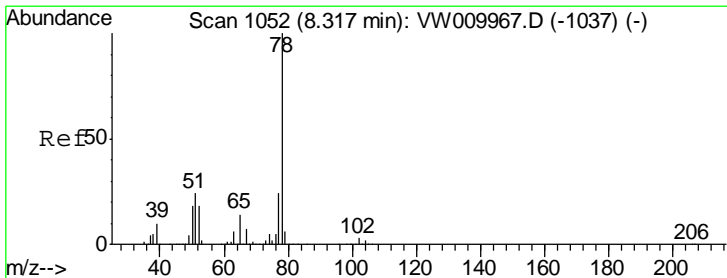
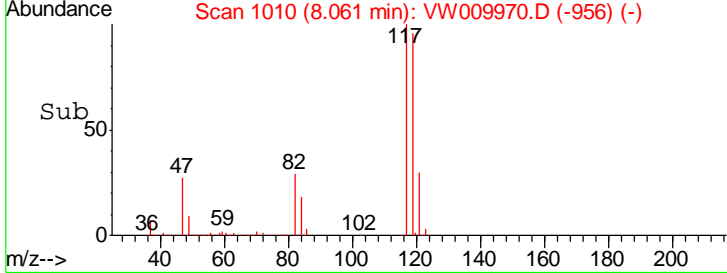
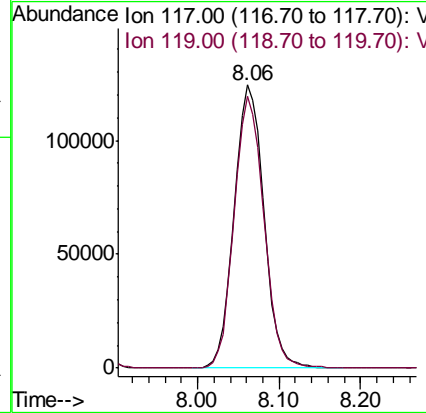
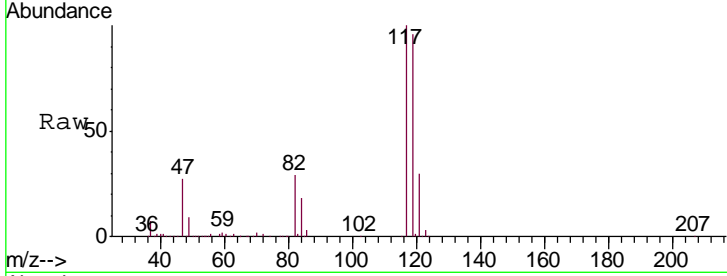




#32
 Carbon tetrachloride
 Concen: 28.220 ug/L
 RT: 8.06 min Scan# 1010
 Delta R.T. 0.00 min
 Lab File: VW009970.D
 Acq: 13 Apr 2019 18:21

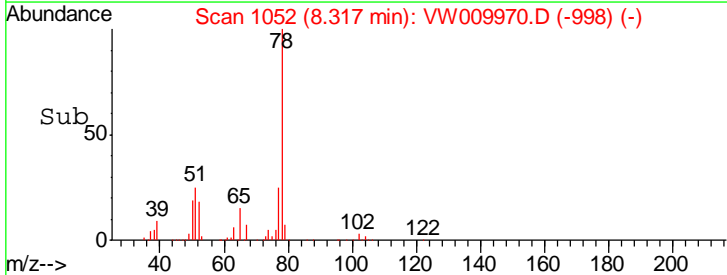
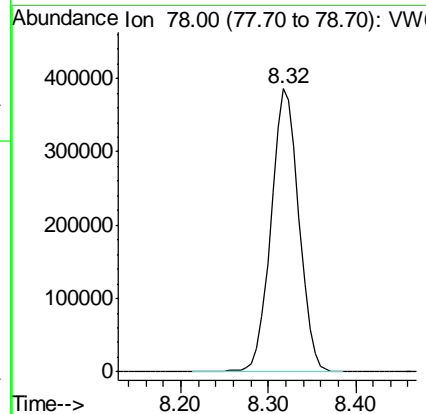
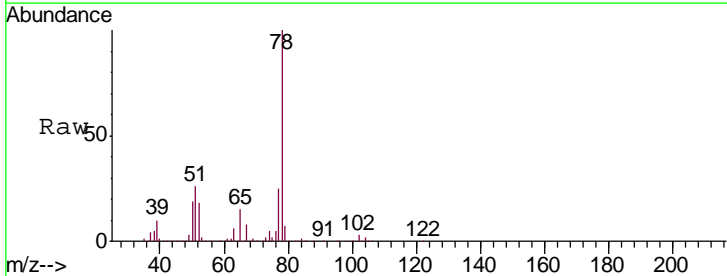
Instrument :
 MSVOA_W
 ClientSampled :
 VSTD02502

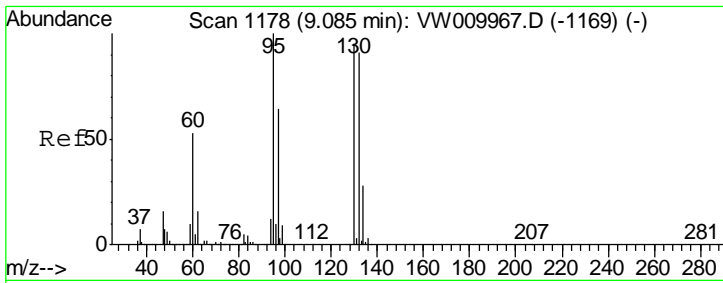
Tgt Ion: 117 Resp: 313792
 Ion Ratio Lower Upper
 117 100
 119 95.8 75.4 113.2



#34
 Benzene
 Concen: 29.247 ug/L
 RT: 8.32 min Scan# 1052
 Delta R.T. 0.00 min
 Lab File: VW009970.D
 Acq: 13 Apr 2019 18:21

Tgt Ion: 78 Resp: 860313

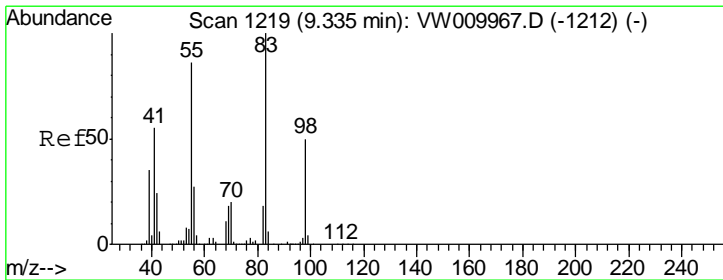
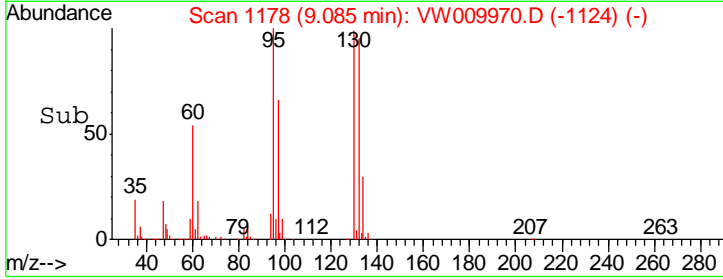
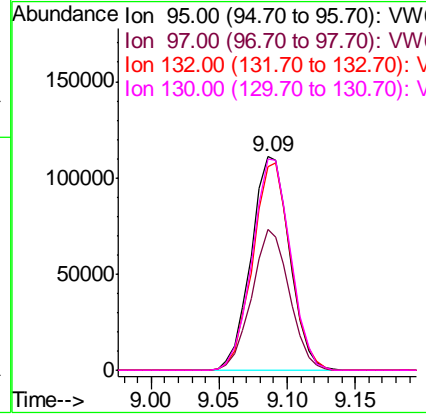
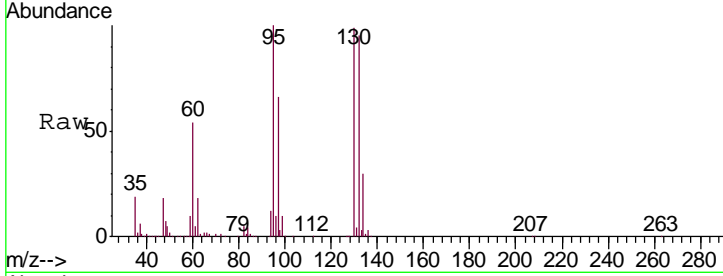




#35
 Trichloroethene
 Concen: 28.650 ug/L
 RT: 9.09 min Scan# 1178
 Delta R.T. 0.00 min
 Lab File: VW009970.D
 Acq: 13 Apr 2019 18:21

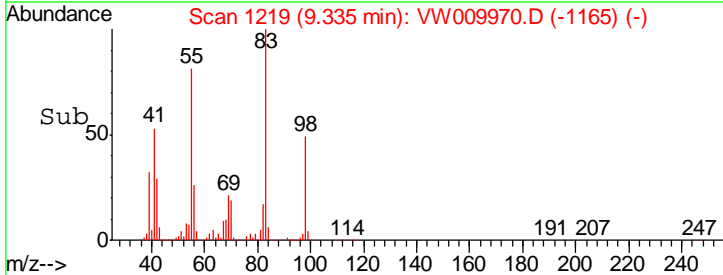
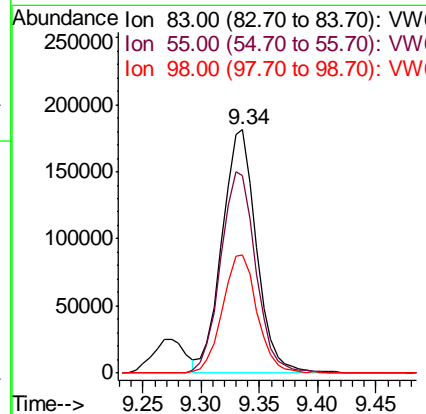
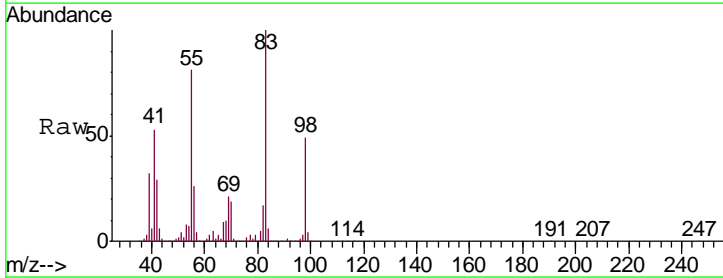
Instrument :
 MSVOA_W
ClientSampled :
 VSTD02502

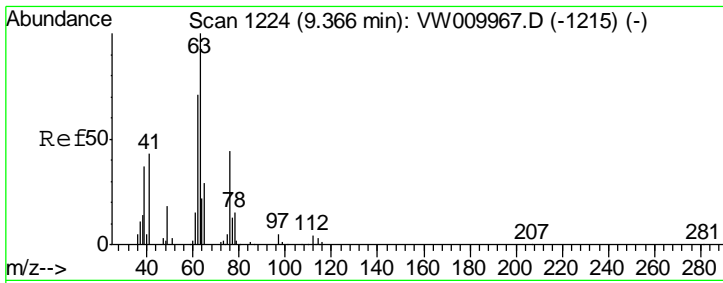
| Tgt Ion | Resp | Lower | Upper |
|---------|------|-------|-------|
| 95 | 100 | | |
| 97 | 64.2 | 44.9 | 83.5 |
| 132 | 95.2 | 67.1 | 124.7 |
| 130 | 98.1 | 69.2 | 128.6 |



#36
 Methylcyclohexane
 Concen: 29.386 ug/L
 RT: 9.34 min Scan# 1219
 Delta R.T. 0.00 min
 Lab File: VW009970.D
 Acq: 13 Apr 2019 18:21

| Tgt Ion | Resp | Lower | Upper |
|---------|------|-------|-------|
| 83 | 100 | | |
| 55 | 84.5 | 66.3 | 99.5 |
| 98 | 48.2 | 39.4 | 59.0 |

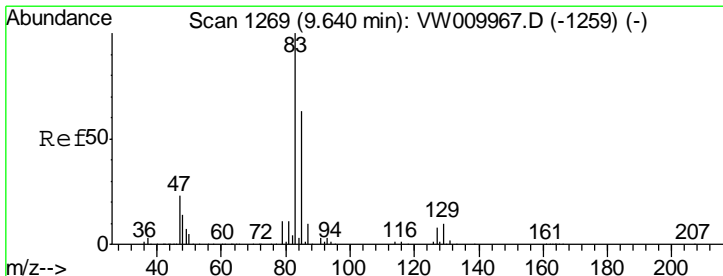
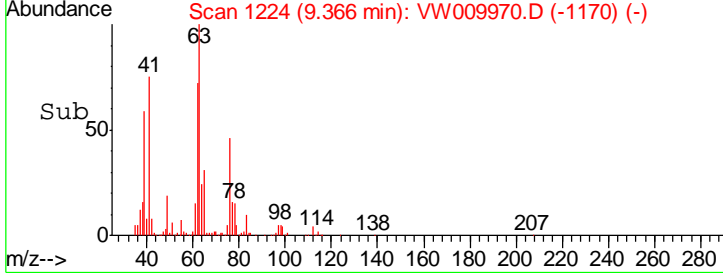
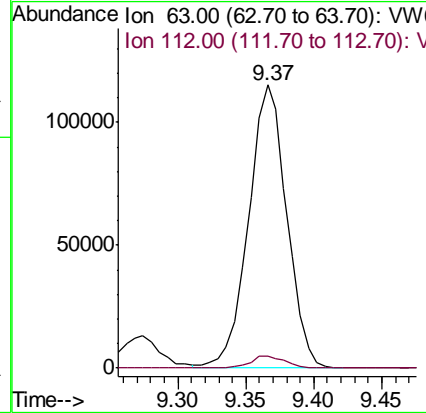
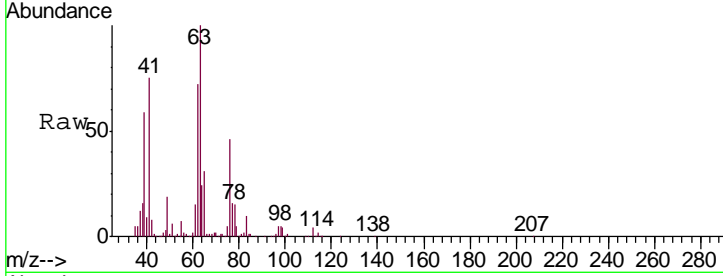




#40
 1,2-Dichloropropane
 Concen: 30.076 ug/L
 RT: 9.37 min Scan# 1224
 Delta R.T. 0.00 min
 Lab File: VW009970.D
 Acq: 13 Apr 2019 18:21

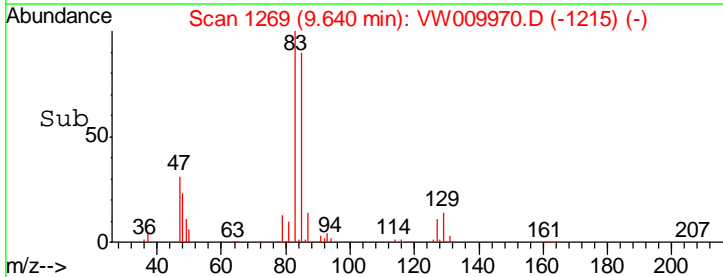
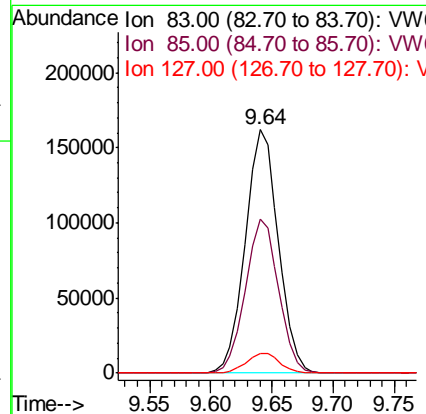
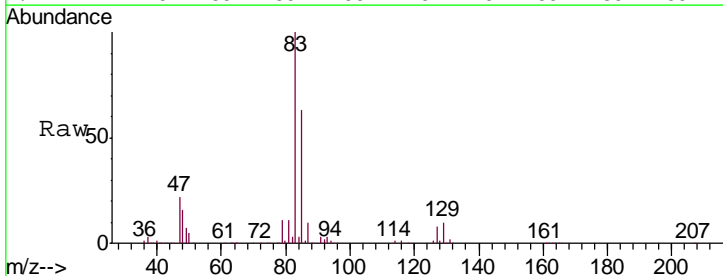
Instrument :
 MSVOA_W
 ClientSampled :
 VSTD02502

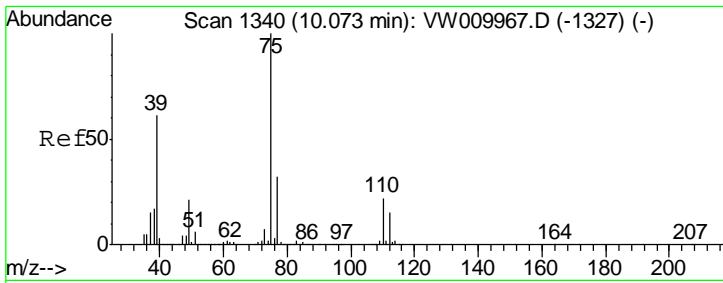
| Tgt Ion | Resp | Lower | Upper |
|---------|------|-------|-------|
| 63 | 100 | | |
| 112 | 4.1 | 3.8 | 5.8 |



#41
 Bromodichloromethane
 Concen: 29.213 ug/L
 RT: 9.64 min Scan# 1269
 Delta R.T. 0.00 min
 Lab File: VW009970.D
 Acq: 13 Apr 2019 18:21

| Tgt Ion | Resp | Lower | Upper |
|---------|------|-------|-------|
| 83 | 100 | | |
| 85 | 63.4 | 45.0 | 83.6 |
| 127 | 7.8 | 6.7 | 10.1 |

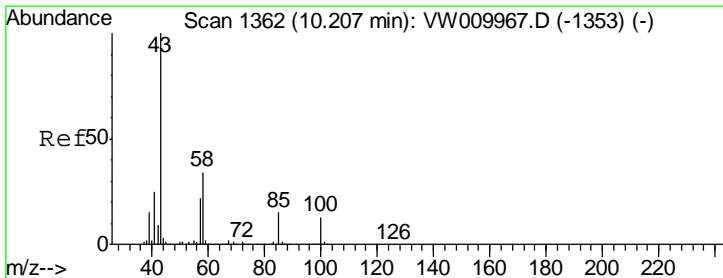
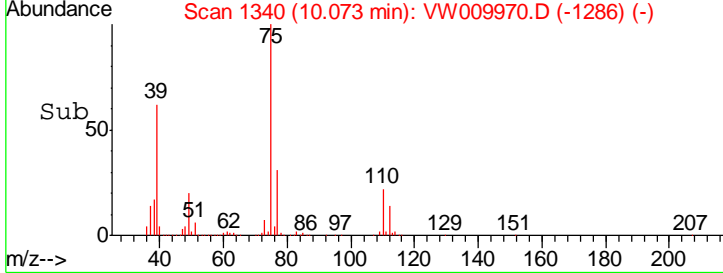
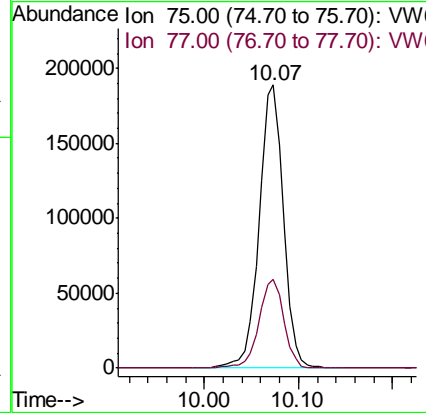
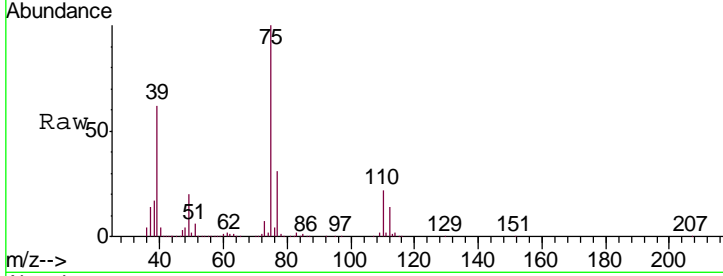




#42
 cis-1,3-Dichloropropene
 Concen: 29.106 ug/L
 RT: 10.07 min Scan# 1340
 Delta R.T. 0.00 min
 Lab File: VW009970.D
 Acq: 13 Apr 2019 18:21

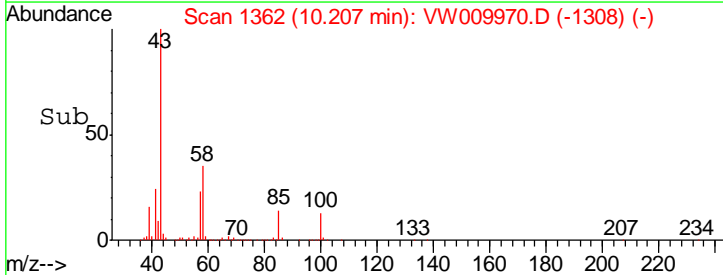
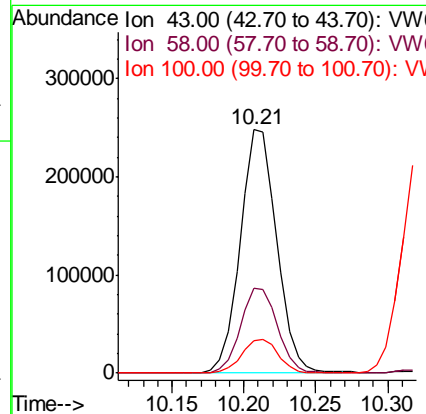
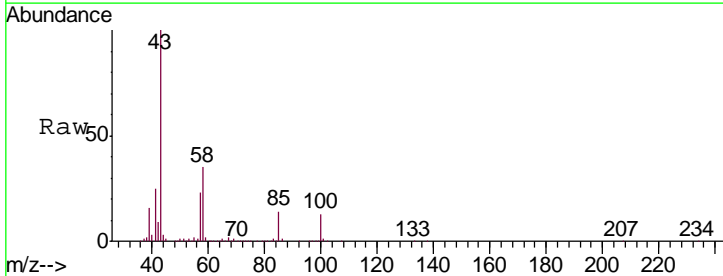
Instrument :
 MSVOA_W
 ClientSampled :
 VSTD02502

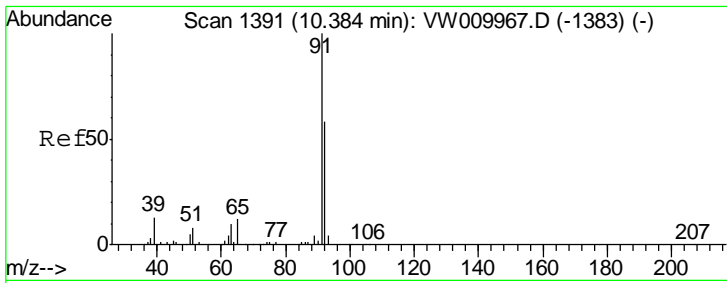
Tgt Ion: 75 Resp: 339529
 Ion Ratio Lower Upper
 75 100
 77 31.5 21.0 39.0



#43
 4-Methyl-2-pentanone
 Concen: 74.427 ug/L
 RT: 10.21 min Scan# 1362
 Delta R.T. 0.00 min
 Lab File: VW009970.D
 Acq: 13 Apr 2019 18:21

Tgt Ion: 43 Resp: 435321
 Ion Ratio Lower Upper
 43 100
 58 35.4 28.2 42.4
 100 13.9 10.9 16.3

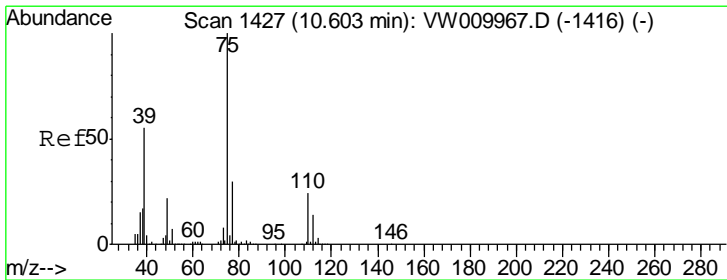
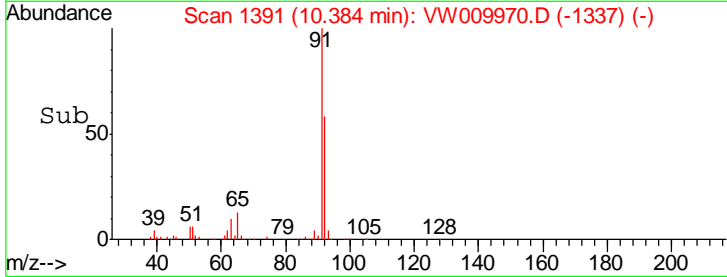
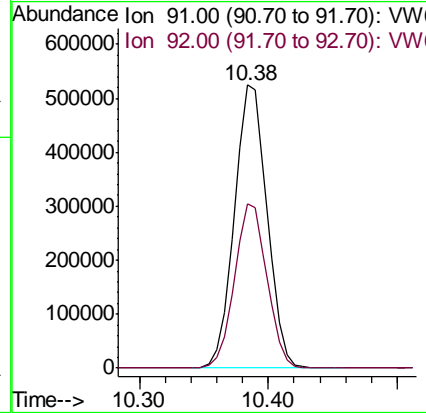
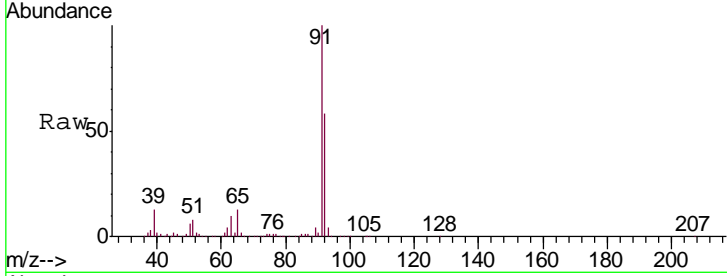




#44
 Toluene
 Concen: 29.718 ug/L
 RT: 10.38 min Scan# 1391
 Delta R.T. 0.00 min
 Lab File: VW009970.D
 Acq: 13 Apr 2019 18:21

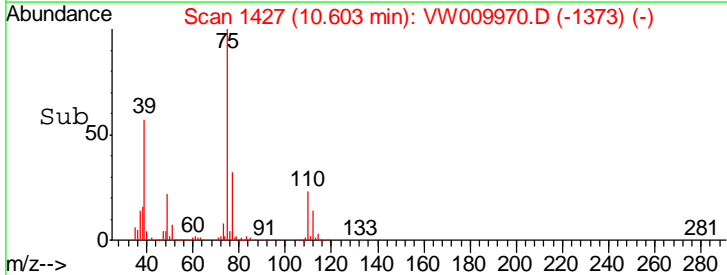
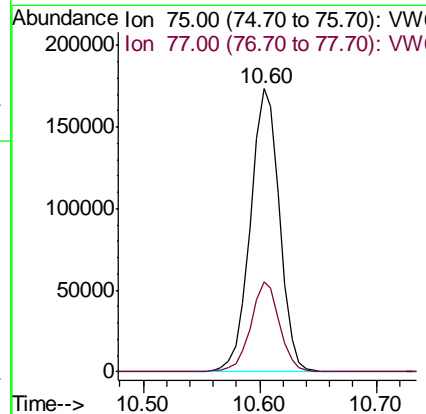
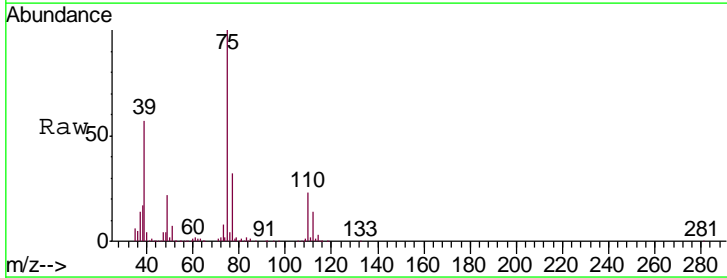
Instrument :
 MSVOA_W
 ClientSampled :
 VSTD02502

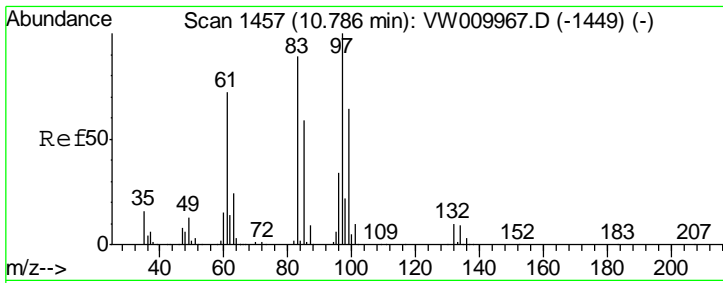
Tgt Ion: 91 Resp: 926023
 Ion Ratio Lower Upper
 91 100
 92 58.2 40.5 75.1



#45
 trans-1,3-Dichloropropene
 Concen: 30.138 ug/L
 RT: 10.60 min Scan# 1427
 Delta R.T. 0.00 min
 Lab File: VW009970.D
 Acq: 13 Apr 2019 18:21

Tgt Ion: 75 Resp: 303101
 Ion Ratio Lower Upper
 75 100
 77 32.1 21.1 39.3

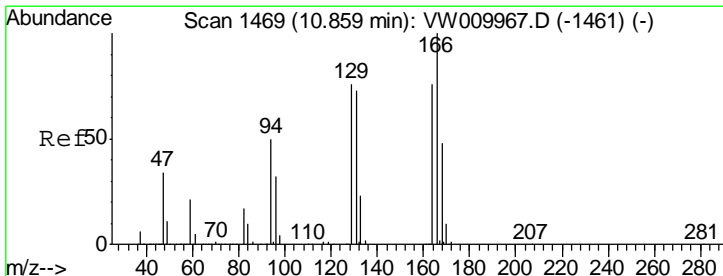
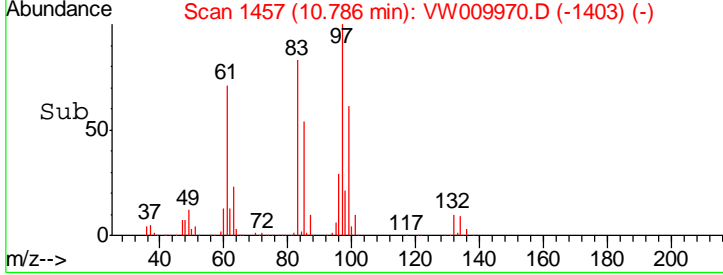
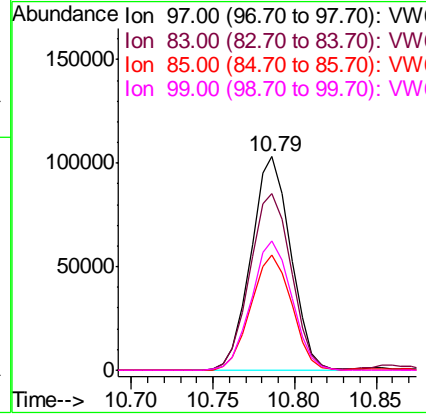
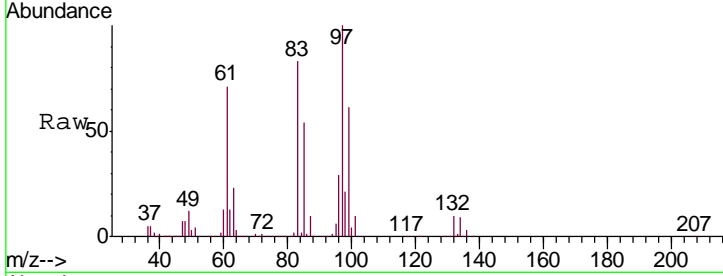




#46
 1,1,2-Trichloroethane
 Concen: 31.061 ug/L
 RT: 10.79 min Scan# 1457
 Delta R.T. 0.00 min
 Lab File: VW009970.D
 Acq: 13 Apr 2019 18:21

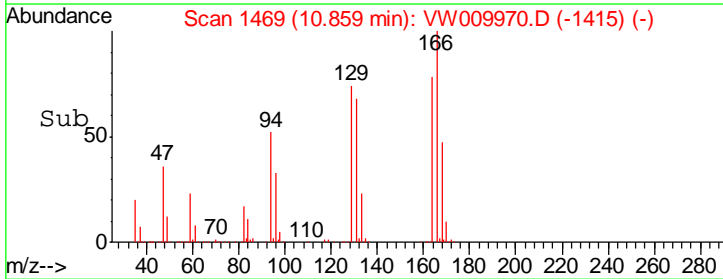
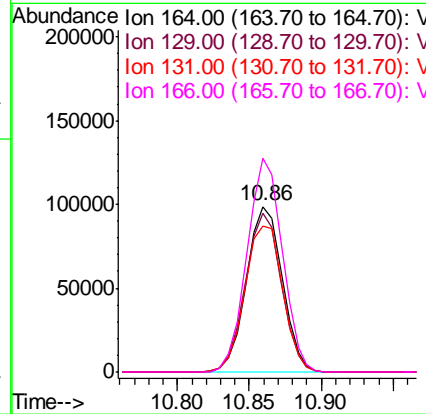
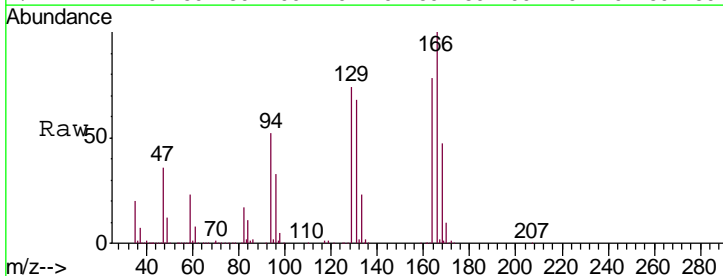
Instrument : MSVOA_W
 ClientSampled : VSTD02502

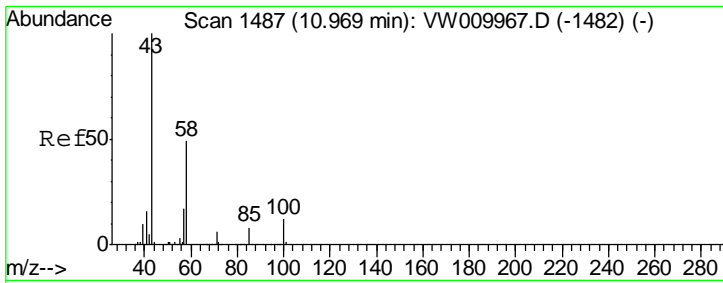
| Tgt Ion | Resp | Lower | Upper |
|---------|--------|-------|-------|
| 97 | 175553 | | |
| 83 | 82.9 | 57.3 | 106.3 |
| 85 | 54.0 | 38.1 | 70.7 |
| 99 | 60.8 | 40.9 | 75.9 |



#47
 Tetrachloroethene
 Concen: 28.058 ug/L
 RT: 10.86 min Scan# 1469
 Delta R.T. 0.00 min
 Lab File: VW009970.D
 Acq: 13 Apr 2019 18:21

| Tgt Ion | Resp | Lower | Upper |
|---------|--------|-------|-------|
| 164 | 170111 | | |
| 129 | 95.9 | 68.9 | 127.9 |
| 131 | 88.2 | 63.1 | 117.1 |
| 166 | 128.9 | 88.5 | 164.4 |



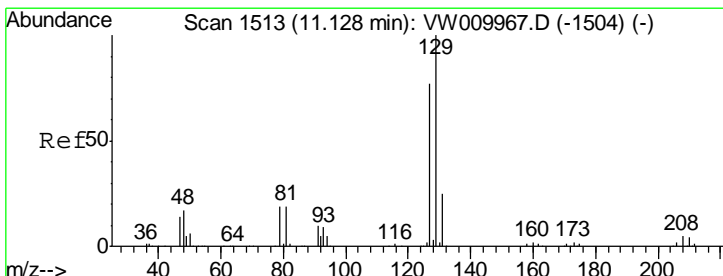
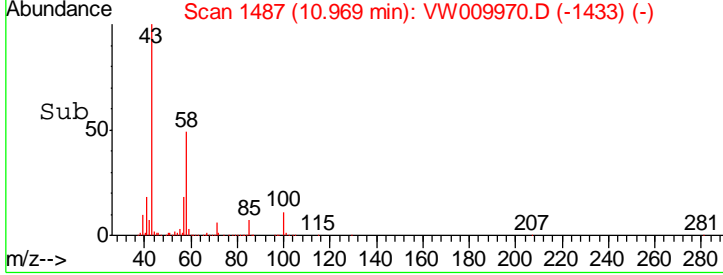
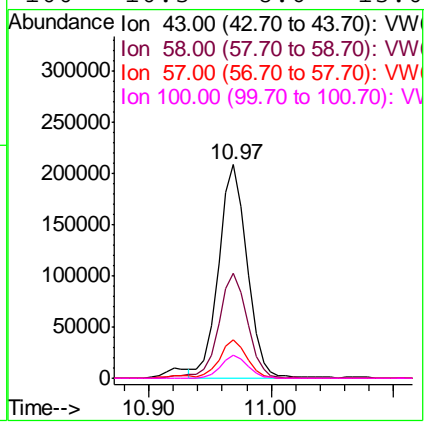
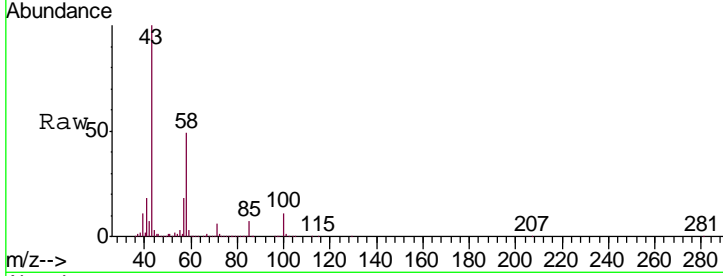


#49
 2-Hexanone
 Concen: 77.200 ug/L
 RT: 10.97 min Scan# 1487
 Delta R.T. 0.00 min
 Lab File: VW009970.D
 Acq: 13 Apr 2019 18:21

Instrument : MSVOA_W
 ClientSampled : VSTD02502

Tgt Ion: 43 Resp: 336212

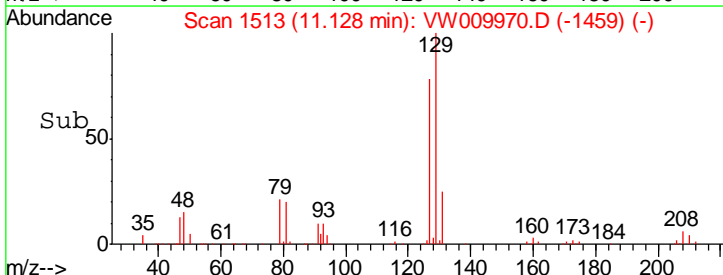
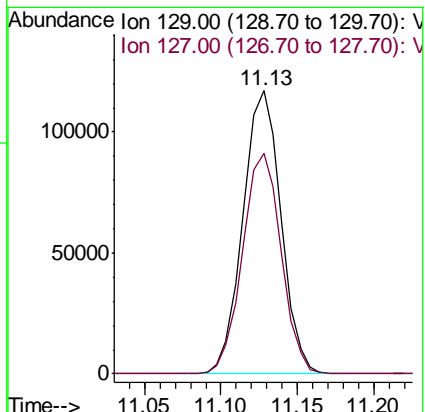
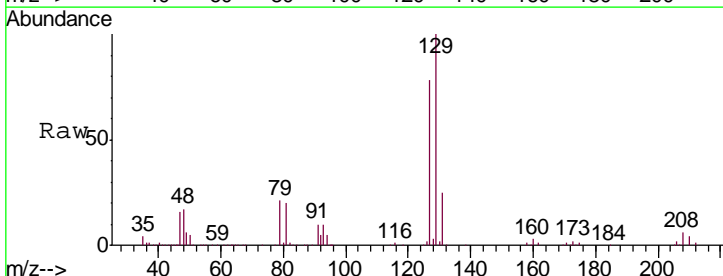
| Ion | Ratio | Lower | Upper |
|-----|-------|-------|-------|
| 43 | 100 | | |
| 58 | 48.6 | 38.9 | 58.3 |
| 57 | 17.3 | 13.8 | 20.6 |
| 100 | 10.3 | 8.6 | 13.0 |

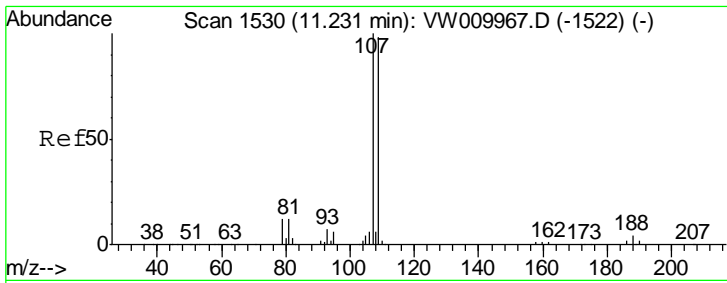


#50
 Dibromochloromethane
 Concen: 29.230 ug/L
 RT: 11.13 min Scan# 1513
 Delta R.T. 0.00 min
 Lab File: VW009970.D
 Acq: 13 Apr 2019 18:21

Tgt Ion: 129 Resp: 202961

| Ion | Ratio | Lower | Upper |
|-----|-------|-------|-------|
| 129 | 100 | | |
| 127 | 78.1 | 53.0 | 98.4 |

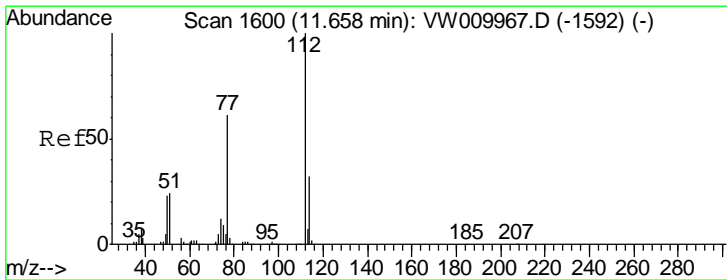
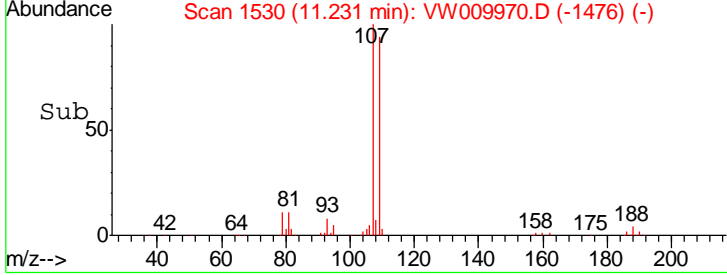
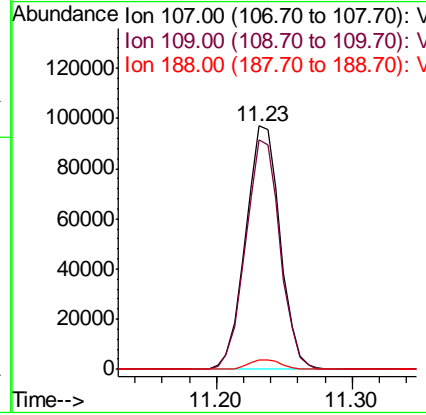
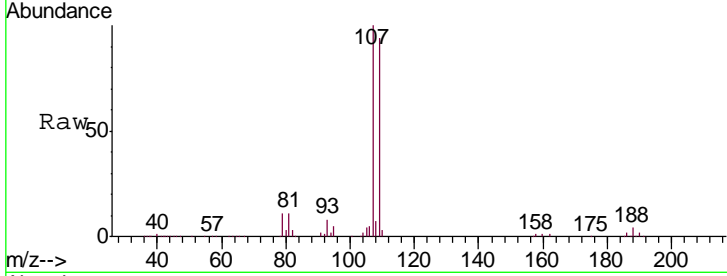




#51
 1,2-Dibromoethane
 Concen: 30.423 ug/L
 RT: 11.23 min Scan# 1530
 Delta R.T. 0.00 min
 Lab File: VW009970.D
 Acq: 13 Apr 2019 18:21

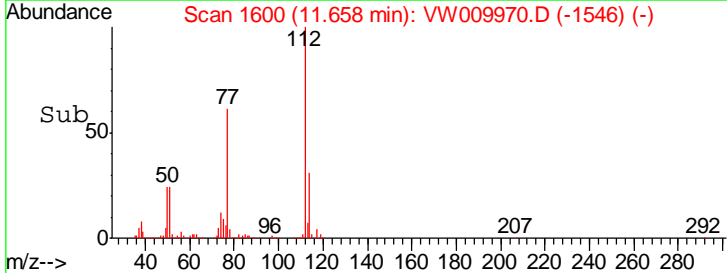
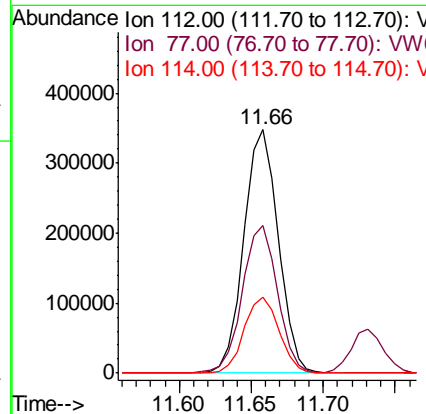
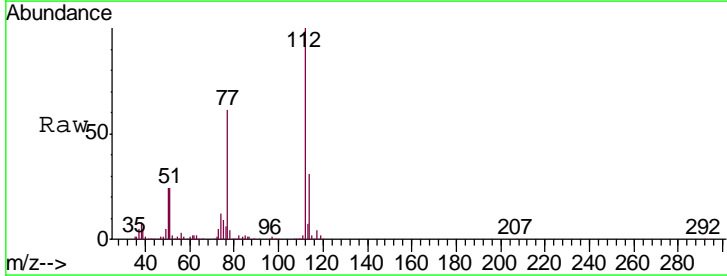
Instrument : MSVOA_W
 ClientSampled : VSTD02502

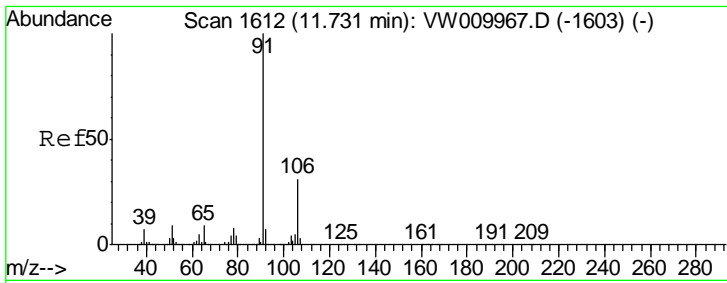
| Tgt Ion | Resp | Lower | Upper |
|---------|--------|-------|-------|
| 107 | 172337 | | |
| 109 | 94.4 | 65.4 | 121.4 |
| 188 | 3.8 | 3.2 | 4.8 |



#52
 Chlorobenzene
 Concen: 28.683 ug/L
 RT: 11.66 min Scan# 1600
 Delta R.T. 0.00 min
 Lab File: VW009970.D
 Acq: 13 Apr 2019 18:21

| Tgt Ion | Resp | Lower | Upper |
|---------|--------|-------|-------|
| 112 | 575322 | | |
| 77 | 60.6 | 48.2 | 72.2 |
| 114 | 31.3 | 23.0 | 42.6 |

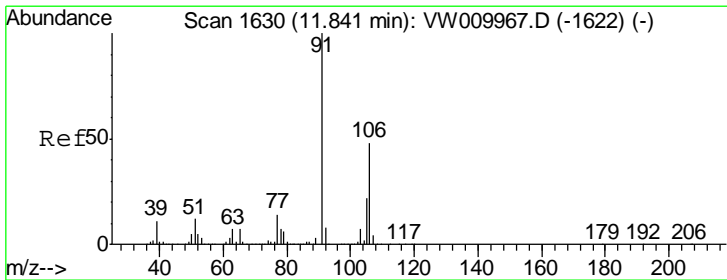
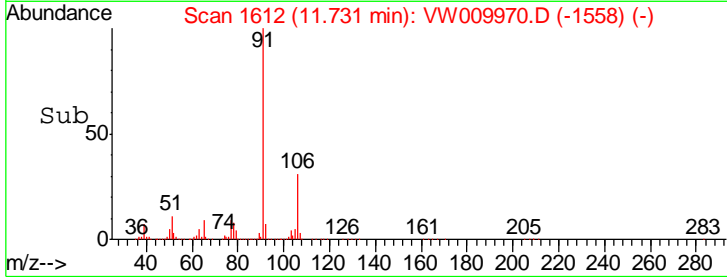
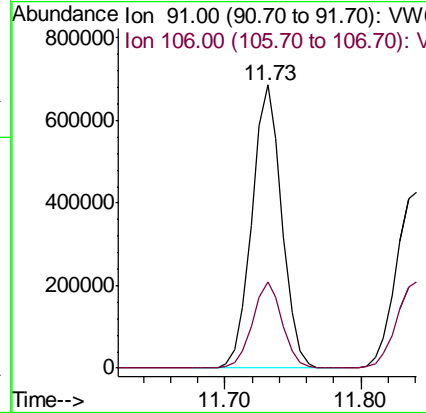
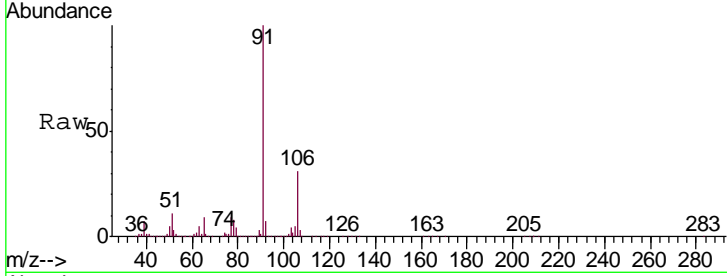




#53
 Ethylbenzene
 Concen: 29.765 ug/L
 RT: 11.73 min Scan# 1612
 Delta R.T. 0.00 min
 Lab File: VW009970.D
 Acq: 13 Apr 2019 18:21

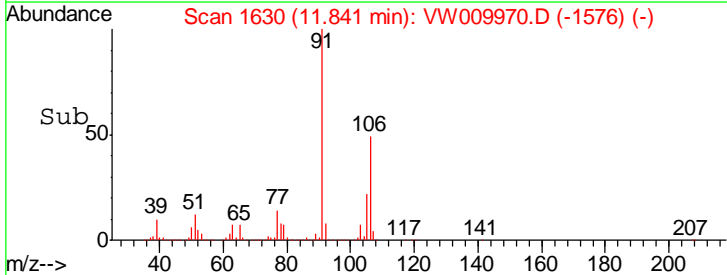
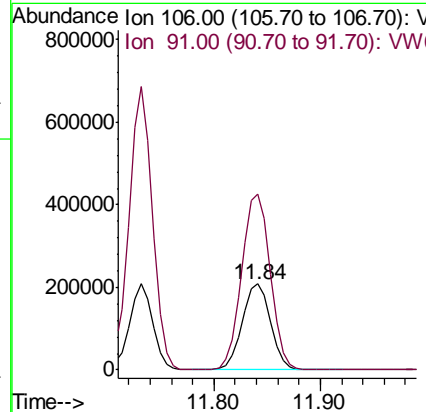
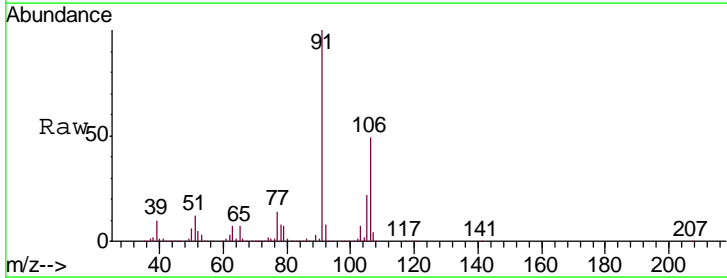
Instrument :
 MSVOA_W
 ClientSampled :
 VSTD02502

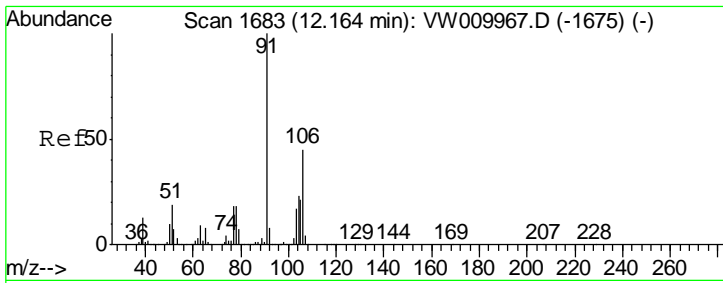
Tgt Ion: 91 Resp: 1056541
 Ion Ratio Lower Upper
 91 100
 106 30.6 21.5 39.9



#54
 m,p-Xylene
 Concen: 29.684 ug/L
 RT: 11.84 min Scan# 1630
 Delta R.T. 0.00 min
 Lab File: VW009970.D
 Acq: 13 Apr 2019 18:21

Tgt Ion: 106 Resp: 389712
 Ion Ratio Lower Upper
 106 100
 91 205.5 145.3 269.9

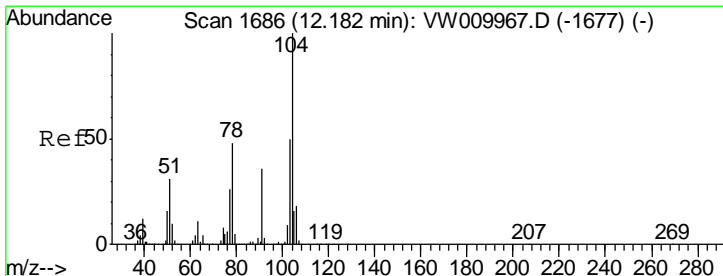
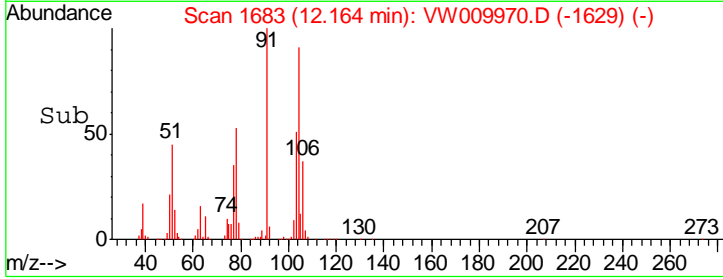
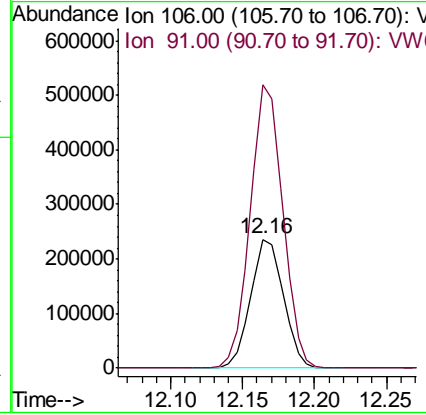
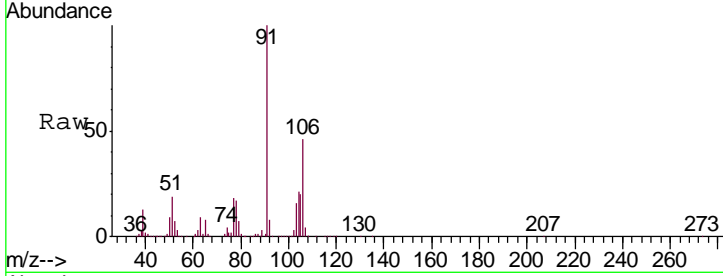




#55
 o-xylene
 Concen: 29.668 ug/L
 RT: 12.16 min Scan# 1683
 Delta R.T. 0.00 min
 Lab File: VW009970.D
 Acq: 13 Apr 2019 18:21

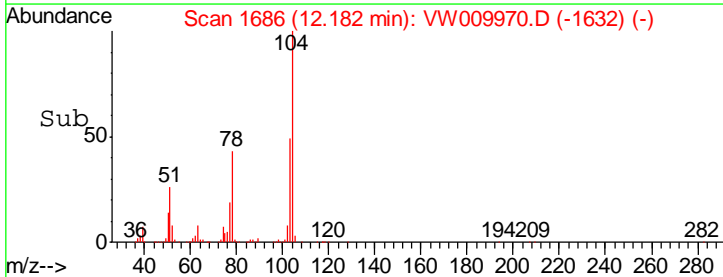
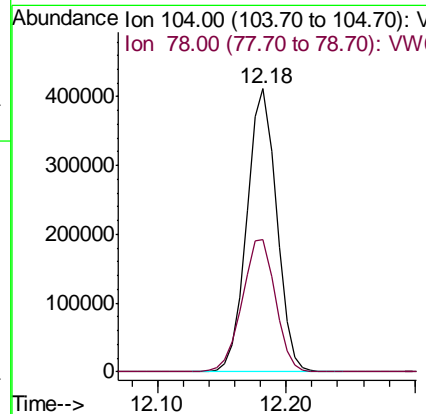
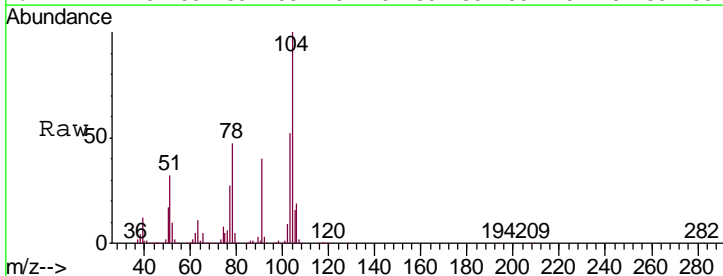
Instrument : MSVOA_W
 ClientSampled : VSTD02502

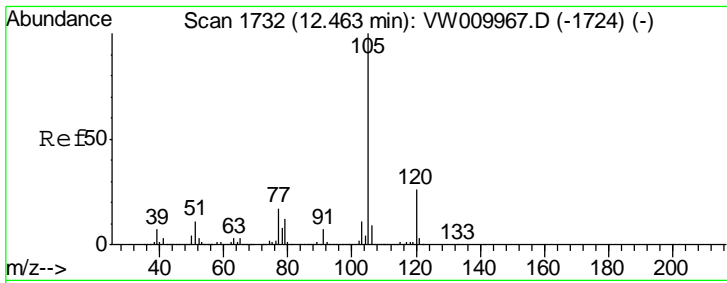
Tgt Ion:106 Resp: 370960
 Ion Ratio Lower Upper
 106 100
 91 219.3 153.9 285.7



#56
 Styrene
 Concen: 30.180 ug/L
 RT: 12.18 min Scan# 1686
 Delta R.T. 0.00 min
 Lab File: VW009970.D
 Acq: 13 Apr 2019 18:21

Tgt Ion:104 Resp: 654772
 Ion Ratio Lower Upper
 104 100
 78 46.9 32.9 61.1





#57

Isopropylbenzene

Concen: 30.145 ug/L

RT: 12.46 min Scan# 1732

Delta R.T. 0.00 min

Lab File: VW009970.D

Acq: 13 Apr 2019 18:21

Instrument :

MSVOA_W

ClientSampled :

VSTD02502

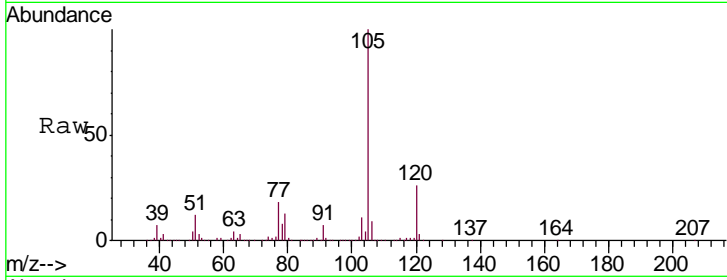
Tgt Ion:105 Resp: 1032100

Ion Ratio Lower Upper

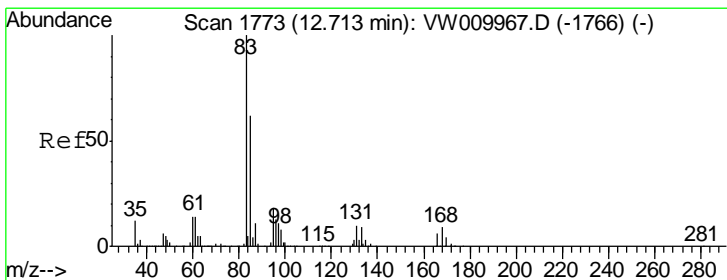
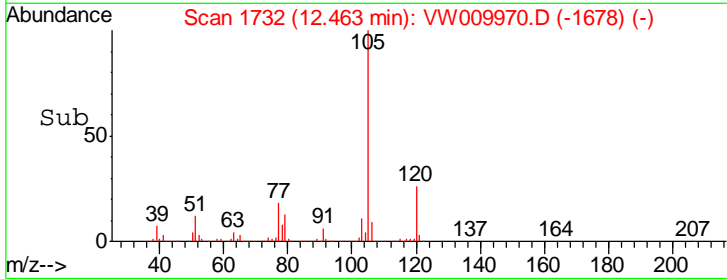
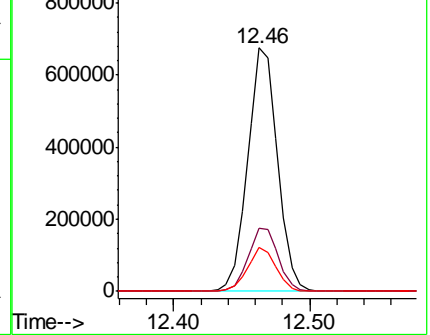
105 100

120 26.1 21.0 31.4

77 17.3 13.4 20.2



Abundance Ion 105.00 (104.70 to 105.70): V
Ion 120.00 (119.70 to 120.70): V
Ion 77.00 (76.70 to 77.70): V



#58

1,1,2,2-Tetrachloroethane

Concen: 33.143 ug/L

RT: 12.71 min Scan# 1773

Delta R.T. 0.00 min

Lab File: VW009970.D

Acq: 13 Apr 2019 18:21

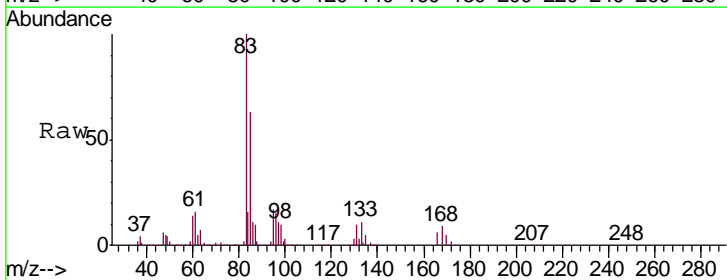
Tgt Ion: 83 Resp: 251888

Ion Ratio Lower Upper

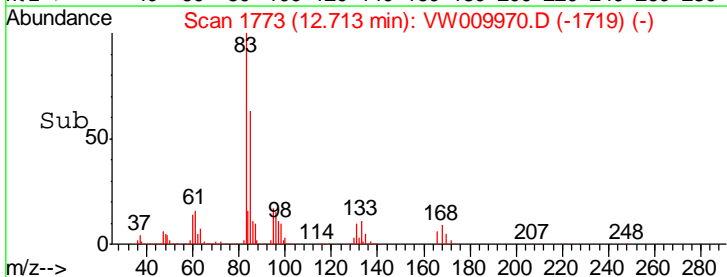
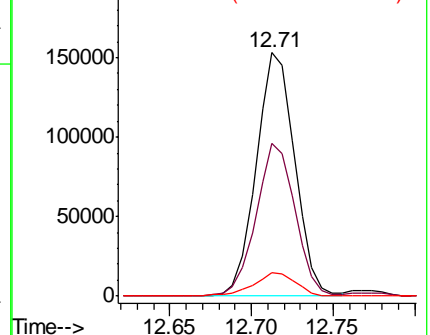
83 100

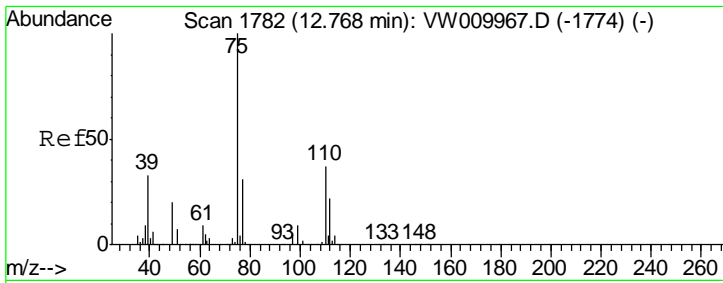
85 62.8 44.9 83.3

131 9.8 7.2 10.8



Abundance Ion 83.00 (82.70 to 83.70): VV
Ion 85.00 (84.70 to 85.70): VV
Ion 131.00 (130.70 to 131.70): V



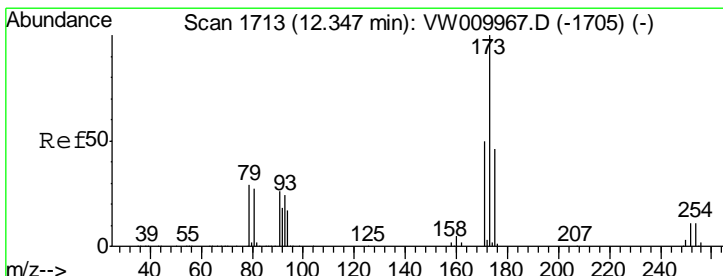
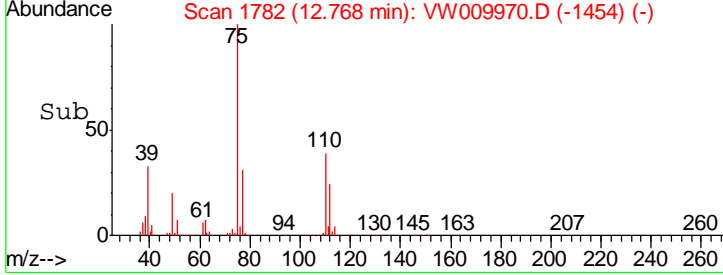
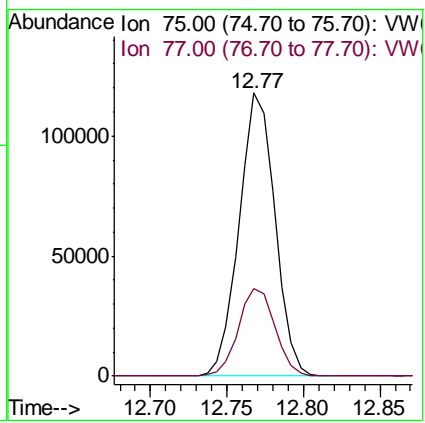
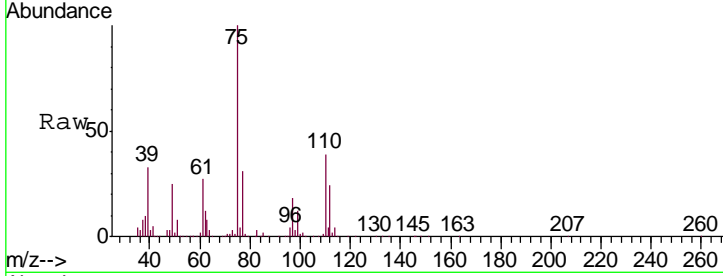


#59
 1,2,3-Trichloropropane
 Concen: 33.984 ug/L
 RT: 12.77 min Scan# 1782
 Delta R.T. 0.00 min
 Lab File: VW009970.D
 Acq: 13 Apr 2019 18:21

Instrument : MSVOA_W
 ClientSampled : VSTD02502

Tgt Ion: 75 Resp: 192259

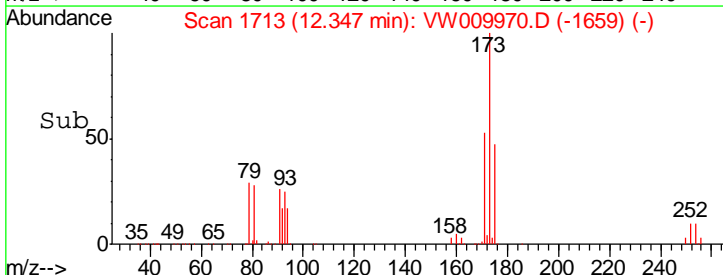
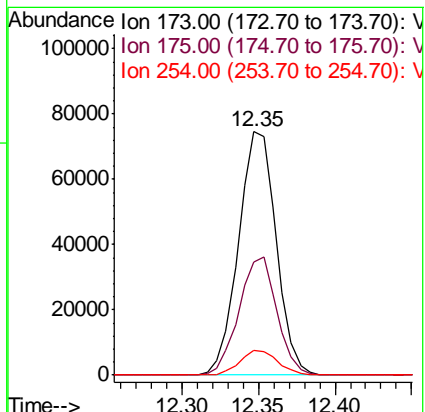
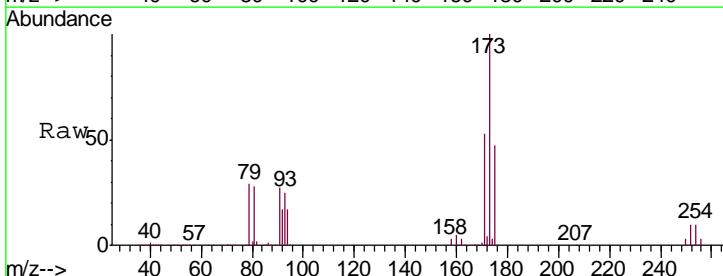
| Ion | Ratio | Lower | Upper |
|-----|-------|-------|-------|
| 75 | 100 | | |
| 77 | 31.7 | 26.2 | 39.2 |

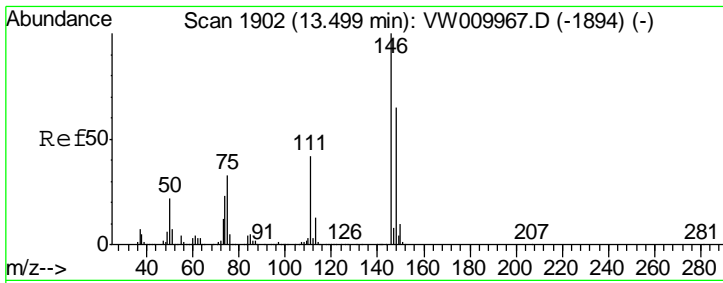


#62
 Bromoform
 Concen: 28.885 ug/L
 RT: 12.35 min Scan# 1713
 Delta R.T. 0.00 min
 Lab File: VW009970.D
 Acq: 13 Apr 2019 18:21

Tgt Ion: 173 Resp: 127685

| Ion | Ratio | Lower | Upper |
|-----|-------|-------|-------|
| 173 | 100 | | |
| 175 | 48.6 | 39.4 | 59.2 |
| 254 | 10.1 | 8.5 | 12.7 |

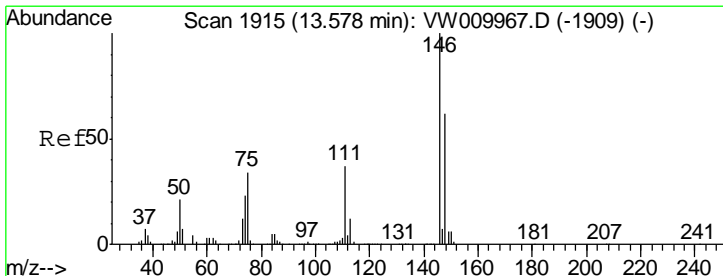
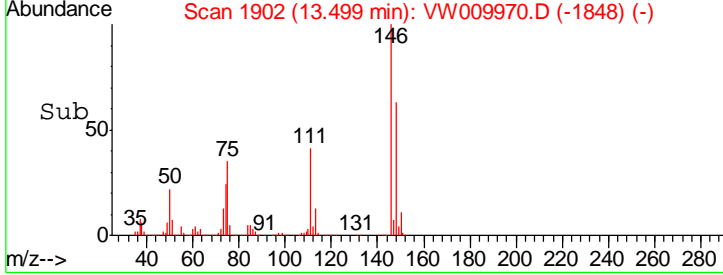
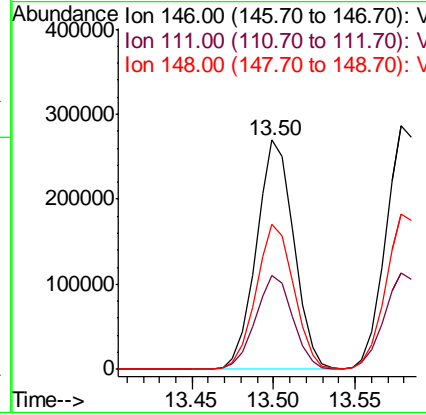
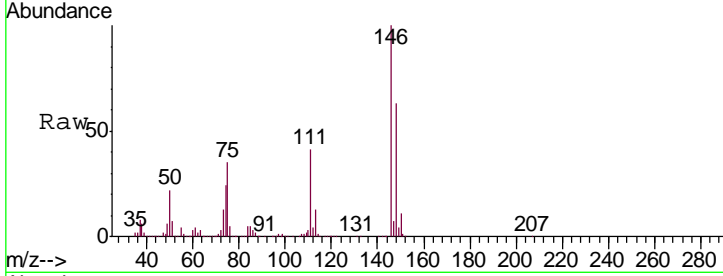




#63
 1,3-Dichlorobenzene
 Concen: 27.631 ug/L
 RT: 13.50 min Scan# 1902
 Delta R.T. 0.00 min
 Lab File: VW009970.D
 Acq: 13 Apr 2019 18:21

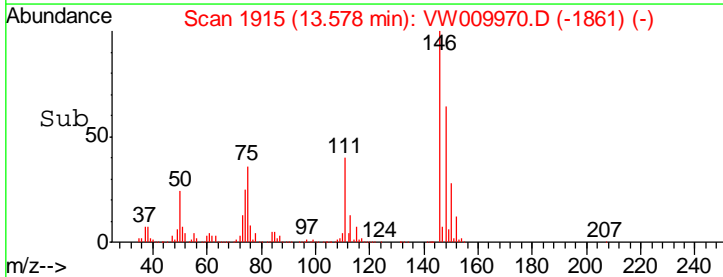
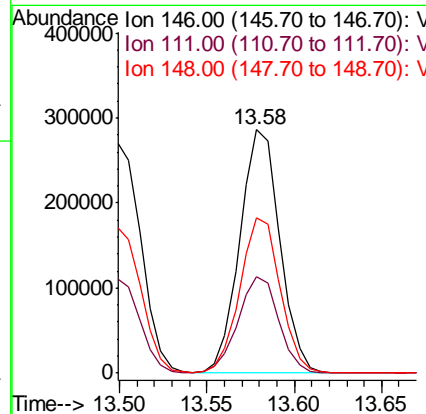
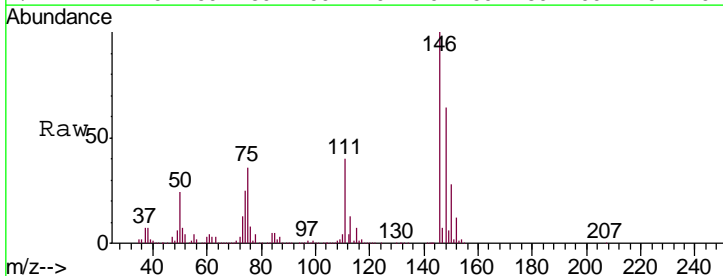
Instrument : MSVOA_W
 Client Sampled : VSTD02502

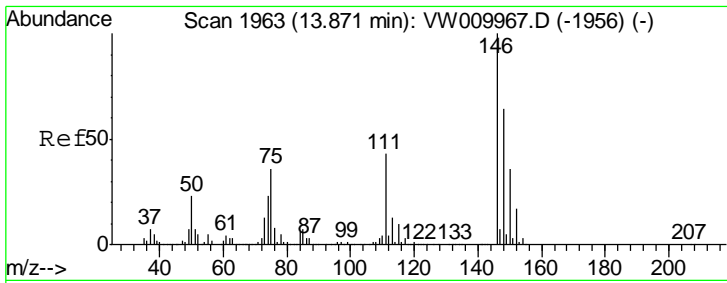
| Tgt Ion | Resp | Lower | Upper |
|---------|------|-------|-------|
| 146 | 100 | | |
| 111 | 41.0 | 28.1 | 52.3 |
| 148 | 63.2 | 44.3 | 82.3 |



#64
 1,4-Dichlorobenzene
 Concen: 27.536 ug/L
 RT: 13.58 min Scan# 1915
 Delta R.T. 0.00 min
 Lab File: VW009970.D
 Acq: 13 Apr 2019 18:21

| Tgt Ion | Resp | Lower | Upper |
|---------|------|-------|-------|
| 146 | 100 | | |
| 111 | 39.7 | 27.4 | 50.8 |
| 148 | 63.8 | 43.8 | 81.3 |

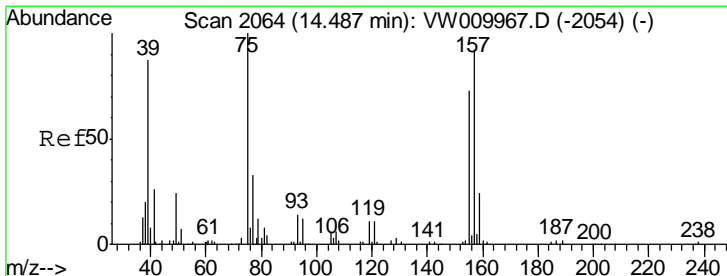
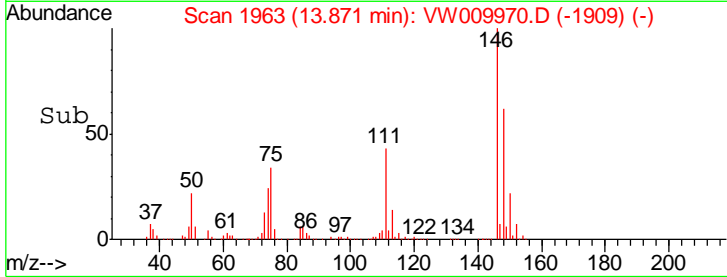
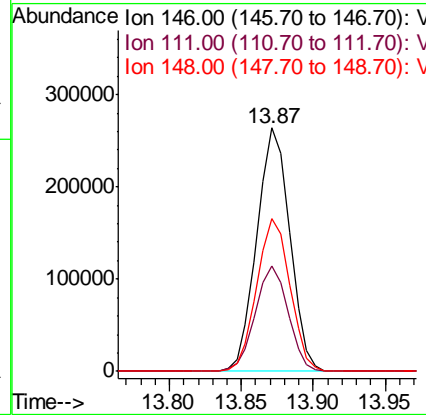
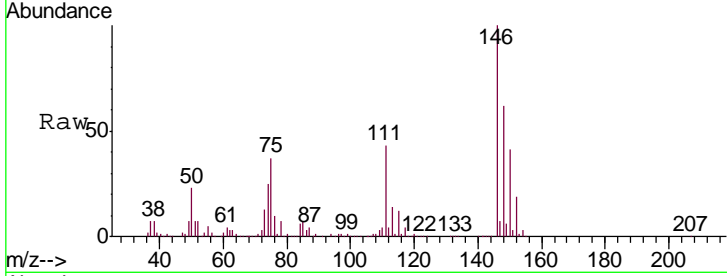




#65
 1,2-Dichlorobenzene
 Concen: 28.060 ug/L
 RT: 13.87 min Scan# 1963
 Delta R.T. 0.00 min
 Lab File: VW009970.D
 Acq: 13 Apr 2019 18:21

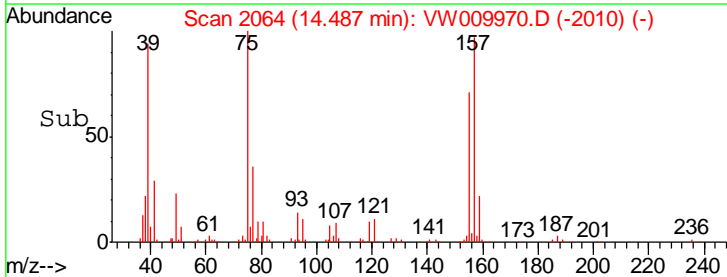
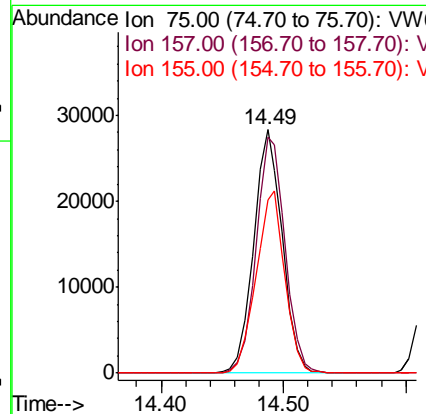
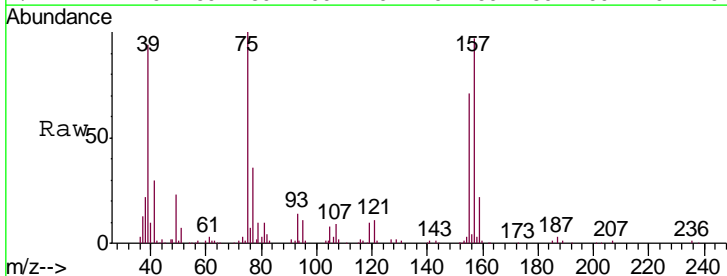
Instrument :
 MSVOA_W
 ClientSampled :
 VSTD02502

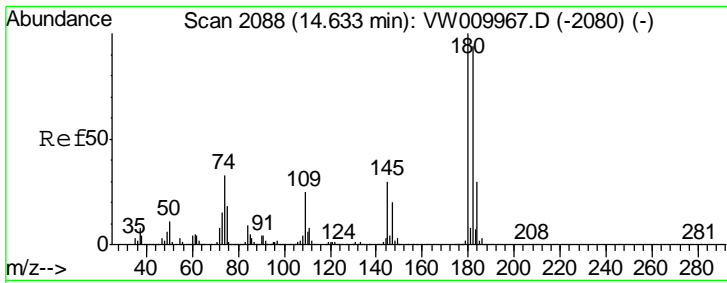
| Tgt Ion | Resp | Lower | Upper |
|---------|--------|-------|-------|
| 146 | 417506 | | |
| 111 | 43.2 | 32.4 | 48.6 |
| 148 | 62.5 | 50.5 | 75.7 |



#66
 1,2-Dibromo-3-chloropropane
 Concen: 31.794 ug/L
 RT: 14.49 min Scan# 2064
 Delta R.T. 0.00 min
 Lab File: VW009970.D
 Acq: 13 Apr 2019 18:21

| Tgt Ion | Resp | Lower | Upper |
|---------|-------|-------|-------|
| 75 | 46048 | | |
| 157 | 96.7 | 77.2 | 115.8 |
| 155 | 71.3 | 61.9 | 92.9 |

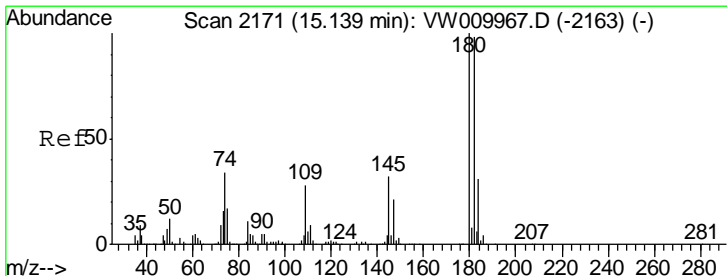
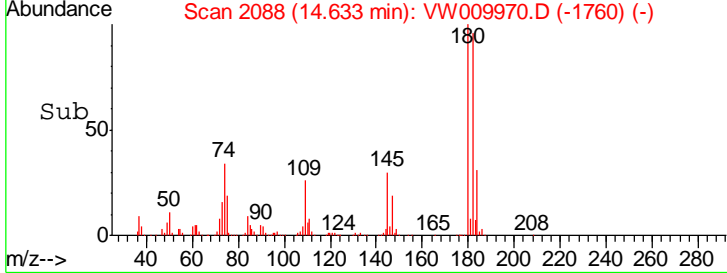
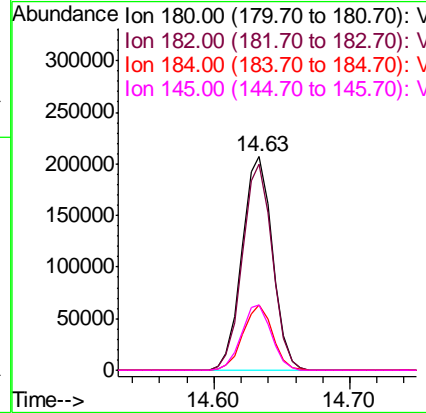
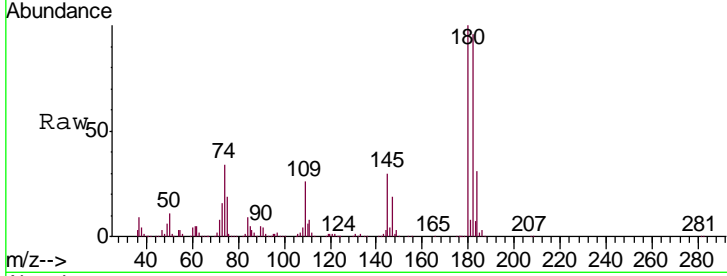




#67
 1,3,5-Trichlorobenzene
 Concen: 28.013 ug/L
 RT: 14.63 min Scan# 2088
 Delta R.T. 0.00 min
 Lab File: VW009970.D
 Acq: 13 Apr 2019 18:21

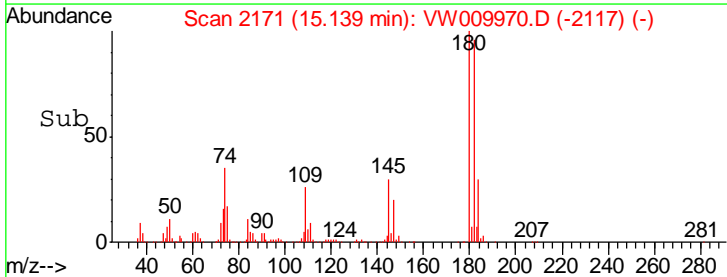
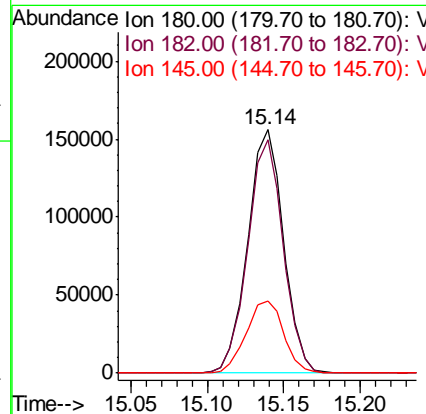
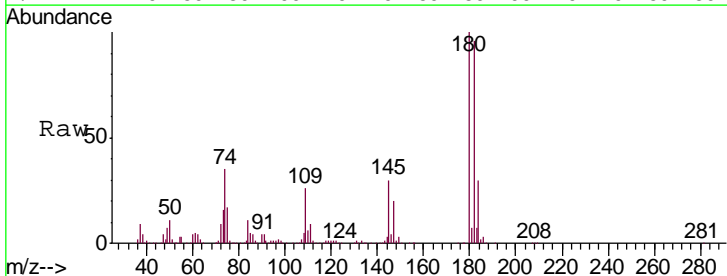
Instrument :
 MSVOA_W
 ClientSampled :
 VSTD02502

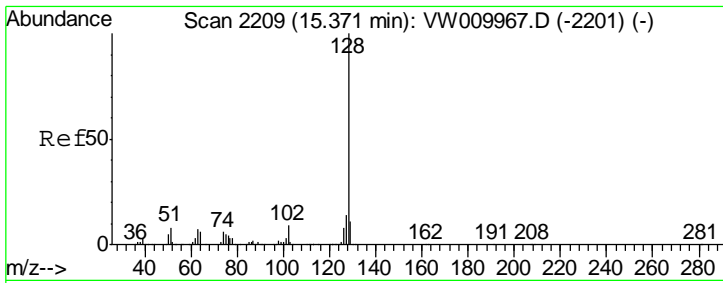
| Tgt Ion | Resp | Lower | Upper |
|---------|--------|-------|-------|
| 180 | 323253 | | |
| 182 | 94.9 | 75.8 | 113.6 |
| 184 | 29.6 | 24.7 | 37.1 |
| 145 | 29.9 | 24.5 | 36.7 |



#68
 1,2,4-trichlorobenzene
 Concen: 27.388 ug/L
 RT: 15.14 min Scan# 2171
 Delta R.T. 0.00 min
 Lab File: VW009970.D
 Acq: 13 Apr 2019 18:21

| Tgt Ion | Resp | Lower | Upper |
|---------|--------|-------|-------|
| 180 | 253807 | | |
| 182 | 95.2 | 75.8 | 113.8 |
| 145 | 31.2 | 24.3 | 36.5 |

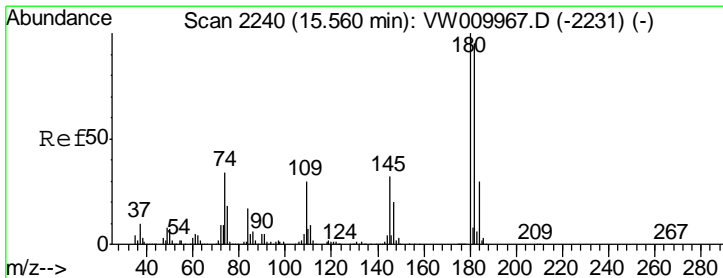
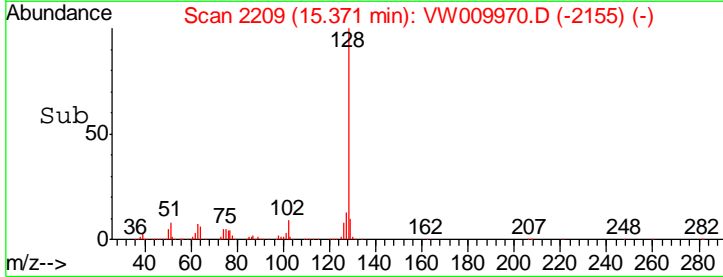
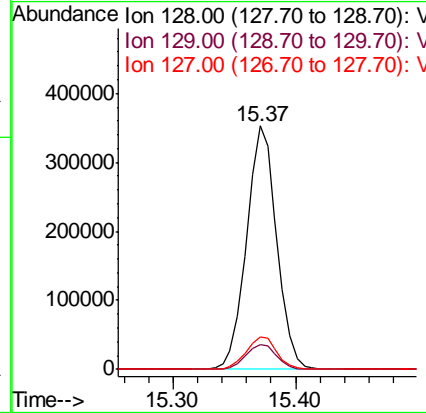
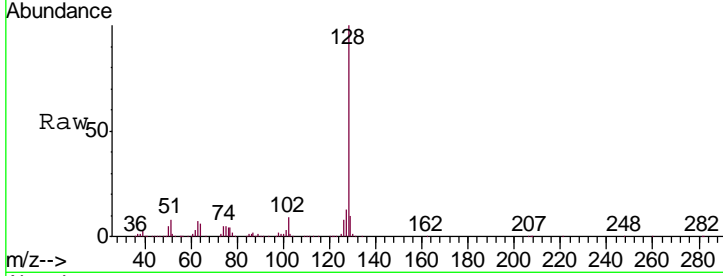




#69
 Naphthalene
 Concen: 32.282 ug/L
 RT: 15.37 min Scan# 2209
 Delta R.T. 0.00 min
 Lab File: VW009970.D
 Acq: 13 Apr 2019 18:21

Instrument :
 MSVOA_W
 ClientSampled :
 VSTD02502

| Tgt Ion | Resp | Lower | Upper |
|---------|--------|-------|-------|
| 128 | 601291 | | |
| 129 | 10.7 | 8.5 | 12.7 |
| 127 | 13.5 | 10.8 | 16.2 |



#70
 1,2,3-Trichlorobenzene
 Concen: 28.969 ug/L
 RT: 15.56 min Scan# 2240
 Delta R.T. 0.00 min
 Lab File: VW009970.D
 Acq: 13 Apr 2019 18:21

| Tgt Ion | Resp | Lower | Upper |
|---------|--------|-------|-------|
| 180 | 251138 | | |
| 182 | 95.0 | 75.0 | 112.4 |
| 145 | 33.1 | 25.8 | 38.6 |

