

Data Path : Z:\voasrv\HPCHEM1\MSVOA_W\Data\VW041321\
 Data File : VW018639.D
 Acq On : 13 Apr 2021 13:42
 Operator : SY/VA
 Sample : VIBLK23
 Misc : 6.36G/10ML/MSVOA_W/SOIL
 ALS Vial : 7 Sample Multiplier: 1

Instrument :
 MSVOA_W
 ClientSampleId :
 VIBLK23

Integration Parameters: LSCINT.P

Integrator: RTE
 Smoothing : OFF Filtering: 5
 Sampling : 1 Min Area: 0 % of largest Peak
 Start Thrs: 0.2 Max Peaks: 100
 Stop Thrs : 0 Peak Location: TOP

If leading or trailing edge < 100 prefer < Baseline drop else tangent >
 Peak separation: 5

Method : Z:\voasrv\HPCHEM1\MSVOA_W\Method\SOM2WLM031921S.M
 Title : VOC Analysis

Signal : TIC: VW018639.D\data.ms

peak #	R.T. min	first scan	max scan	last scan	PK TY	peak height	corr. area	corr. % max.	% of total
1	2.148	38	40	43	rBV3	1300	1723	0.10%	0.013%
2	2.221	48	52	55	rBV4	3279	4999	0.29%	0.039%
3	2.355	69	74	85	rVB	96038	191374	11.27%	1.490%
4	2.629	114	119	122	rBV6	5852	13638	0.80%	0.106%
5	2.891	155	162	174	rBV	73037	192272	11.32%	1.497%
6	3.513	261	264	266	rBV3	814	1278	0.08%	0.010%
7	3.708	292	296	298	rBV2	622	855	0.05%	0.007%
8	4.019	336	347	359	rBV	127504	417494	24.59%	3.251%
9	4.385	397	407	420	rBV	17304	56436	3.32%	0.440%
10	4.915	484	494	511	rBV3	15338	61334	3.61%	0.478%
11	5.098	520	524	525	rBV	669	881	0.05%	0.007%
12	5.129	527	529	532	rVV3	600	829	0.05%	0.006%
13	5.421	569	577	587	rBV9	1955	5854	0.34%	0.046%
14	5.775	631	635	636	rBV3	1461	1844	0.11%	0.014%
15	5.940	654	662	670	rVV4	5134	14149	0.83%	0.110%
16	6.214	704	707	711	rBV3	642	1301	0.08%	0.010%
17	6.915	812	822	825	rBV6	1496	4387	0.26%	0.034%
18	7.080	837	849	854	rBV	43417	121237	7.14%	0.944%
19	7.372	894	897	904	rVB4	580	1043	0.06%	0.008%
20	7.519	915	921	925	rBV7	808	1647	0.10%	0.013%
21	7.647	932	942	958	rVB	258718	632854	37.27%	4.929%
22	7.939	986	990	991	rBV	2165	1948	0.11%	0.015%
23	8.067	1007	1011	1012	rBV3	1162	1563	0.09%	0.012%
24	8.140	1021	1023	1028	rBV3	935	1049	0.06%	0.008%
25	8.275	1032	1045	1063	rBV2	487543	1485903	87.52%	11.572%
26	8.396	1063	1065	1074	rVB6	2636	4408	0.26%	0.034%
27	8.683	1109	1112	1114	rBV2	863	1041	0.06%	0.008%
28	8.841	1129	1138	1149	rBV	702199	1377520	81.13%	10.728%
29	9.037	1168	1170	1171	rVV2	1200	959	0.06%	0.007%
30	9.055	1171	1173	1174	rVV2	1451	1205	0.07%	0.009%
31	9.085	1174	1178	1183	rVB5	3717	6041	0.36%	0.047%
32	9.274	1200	1209	1218	rBV	327809	672907	39.63%	5.241%
33	9.415	1231	1232	1237	rVB4	1784	1725	0.10%	0.013%
34	9.658	1265	1272	1278	rVB5	1831	4699	0.28%	0.037%
35	9.762	1281	1289	1294	rBV7	3073	7890	0.46%	0.061%
36	9.890	1303	1310	1319	rVB5	6379	13612	0.80%	0.106%

Data Path : Z:\voasrv\HPCHEM1\MSVOA_W\Data\VW041321\
 Data File : VW018639.D
 Acq On : 13 Apr 2021 13:42
 Operator : SY/VA
 Sample : VIBLK23
 Misc : 6.36G/10ML/MSVOA_W/SOIL
 ALS Vial : 7 Sample Multiplier: 1

Instrument :
 MSVOA_W
 ClientSampleId :
 VIBLK23

Integration Parameters: LSCINT.P

Integrator: RTE
 Smoothing : OFF Filtering: 5
 Sampling : 1 Min Area: 0 % of largest Peak
 Start Thrs: 0.2 Max Peaks: 100
 Stop Thrs : 0 Peak Location: TOP

If leading or trailing edge < 100 prefer < Baseline drop else tangent >
 Peak separation: 5

Method : Z:\voasrv\HPCHEM1\MSVOA_W\Method\SOM2WLM031921S.M
 Title : VOC Analysis

37	10.036	1326	1334	1346	rVB	174950	320967	18.90%	2.500%
38	10.213	1358	1363	1367	rBV3	5682	11397	0.67%	0.089%
39	10.323	1373	1381	1388	rBV	678347	1186004	69.85%	9.236%
40	10.384	1388	1391	1398	rVB	12478	22595	1.33%	0.176%
41	10.579	1416	1423	1437	rBV	115506	204954	12.07%	1.596%
42	10.701	1437	1443	1450	rVV2	27403	48558	2.86%	0.378%
43	10.786	1450	1457	1461	rVV9	4793	10161	0.60%	0.079%
44	10.859	1464	1469	1473	rVV5	4451	10503	0.62%	0.082%
45	10.927	1473	1480	1497	rVV	174302	313769	18.48%	2.444%
46	11.061	1497	1502	1509	rVV4	12475	24297	1.43%	0.189%
47	11.115	1509	1511	1516	rVV6	1839	3163	0.19%	0.025%
48	11.176	1518	1521	1525	rVB5	2684	3644	0.21%	0.028%
49	11.237	1528	1531	1535	rBV5	657	1327	0.08%	0.010%
50	11.402	1554	1558	1559	rBV3	1503	2013	0.12%	0.016%
51	11.439	1559	1564	1570	rVB2	17893	30695	1.81%	0.239%
52	11.634	1587	1596	1608	rBV	988037	1685745	99.29%	13.128%
53	11.731	1608	1612	1620	rVB4	4471	8099	0.48%	0.063%
54	11.835	1625	1629	1635	rBV3	4213	8591	0.51%	0.067%
55	12.067	1665	1667	1670	rVB3	903	822	0.05%	0.006%
56	12.170	1679	1684	1689	rVV5	5998	10809	0.64%	0.084%
57	12.249	1694	1697	1700	rVV4	827	1359	0.08%	0.011%
58	12.280	1700	1702	1705	rVB3	927	825	0.05%	0.006%
59	12.341	1708	1712	1718	rBV5	2591	5161	0.30%	0.040%
60	12.463	1728	1732	1736	rBV2	4798	7009	0.41%	0.055%
61	12.609	1746	1756	1762	rBV	49465	84898	5.00%	0.661%
62	12.694	1762	1770	1777	rVV	287897	485608	28.60%	3.782%
63	12.762	1777	1781	1784	rVV5	1234	1866	0.11%	0.015%
64	12.859	1792	1797	1801	rBV4	1150	2225	0.13%	0.017%
65	12.932	1804	1809	1812	rBV4	11995	19127	1.13%	0.149%
66	13.036	1820	1826	1830	rBV3	2500	4185	0.25%	0.033%
67	13.085	1830	1834	1838	rVB4	1876	2636	0.16%	0.021%
68	13.188	1845	1851	1855	rBV5	2667	4677	0.28%	0.036%
69	13.249	1855	1861	1864	rVV2	4258	6070	0.36%	0.047%
70	13.292	1864	1868	1874	rVB3	10245	18318	1.08%	0.143%
71	13.402	1878	1886	1891	rBV3	7196	14215	0.84%	0.111%
72	13.475	1891	1898	1899	rBV3	3400	4527	0.27%	0.035%
73	13.505	1899	1903	1905	rVV5	5944	8510	0.50%	0.066%
74	13.554	1905	1911	1932	rVB	1038157	1697844	100.00%	13.223%
75	13.761	1940	1945	1948	rBV3	6003	10247	0.60%	0.080%
76	13.853	1953	1960	1967	rBV	668245	1100620	64.82%	8.572%

Data Path : Z:\voasrv\HPCHEM1\MSVOA_W\Data\VW041321\
 Data File : VW018639.D
 Acq On : 13 Apr 2021 13:42
 Operator : SY/VA
 Sample : VIBLK23
 Misc : 6.36G/10ML/MSVOA_W/SOIL
 ALS Vial : 7 Sample Multiplier: 1

Instrument :
 MSVOA_W
 ClientSampleId :
 VIBLK23

Integration Parameters: LSCINT.P

Integrator: RTE
 Smoothing : OFF Filtering: 5
 Sampling : 1 Min Area: 0 % of largest Peak
 Start Thrs: 0.2 Max Peaks: 100
 Stop Thrs : 0 Peak Location: TOP

If leading or trailing edge < 100 prefer < Baseline drop else tangent >
 Peak separation: 5

Method : Z:\voasrv\HPCHEM1\MSVOA_W\Method\SOM2WLM031921S.M
 Title : VOC Analysis

77	13.944	1974	1975	1981	rVB3	3722	4415	0.26%	0.034%
78	14.017	1983	1987	1991	rVV5	2934	4226	0.25%	0.033%
79	14.066	1991	1995	2003	rVB3	19177	32607	1.92%	0.254%
80	14.194	2011	2016	2021	rBV5	1226	2130	0.13%	0.017%
81	14.322	2032	2037	2042	rBV6	8831	15460	0.91%	0.120%
82	14.523	2061	2070	2075	rBV10	3008	7078	0.42%	0.055%
83	14.627	2083	2087	2092	rVB5	2901	4667	0.27%	0.036%
84	14.719	2098	2102	2110	rVB7	2742	5374	0.32%	0.042%
85	15.036	2150	2154	2156	rVV3	1481	1991	0.12%	0.016%
86	15.103	2163	2165	2166	rVV2	1570	1457	0.09%	0.011%
87	15.127	2166	2169	2173	rVV6	2921	5221	0.31%	0.041%
88	15.170	2173	2176	2186	rVV9	2754	5803	0.34%	0.045%
89	15.249	2186	2189	2194	rVV6	1385	1954	0.12%	0.015%
90	15.365	2204	2208	2210	rVV2	2287	2975	0.18%	0.023%
91	15.432	2211	2219	2224	rVV2	11991	22354	1.32%	0.174%
92	15.487	2224	2228	2233	rVB2	2928	4647	0.27%	0.036%
93	15.682	2256	2260	2267	rBV6	2369	5070	0.30%	0.039%
94	15.767	2270	2274	2276	rBV4	2344	3070	0.18%	0.024%
95	15.840	2284	2286	2290	rVB3	2305	2646	0.16%	0.021%
96	15.956	2298	2305	2310	rBV6	1780	4704	0.28%	0.037%
97	16.285	2357	2359	2365	rVB6	1003	1206	0.07%	0.009%
98	16.456	2382	2387	2388	rBV4	864	1418	0.08%	0.011%
99	16.535	2398	2400	2403	rVB3	1022	1085	0.06%	0.008%
100	16.578	2403	2407	2409	rBV3	794	934	0.06%	0.007%

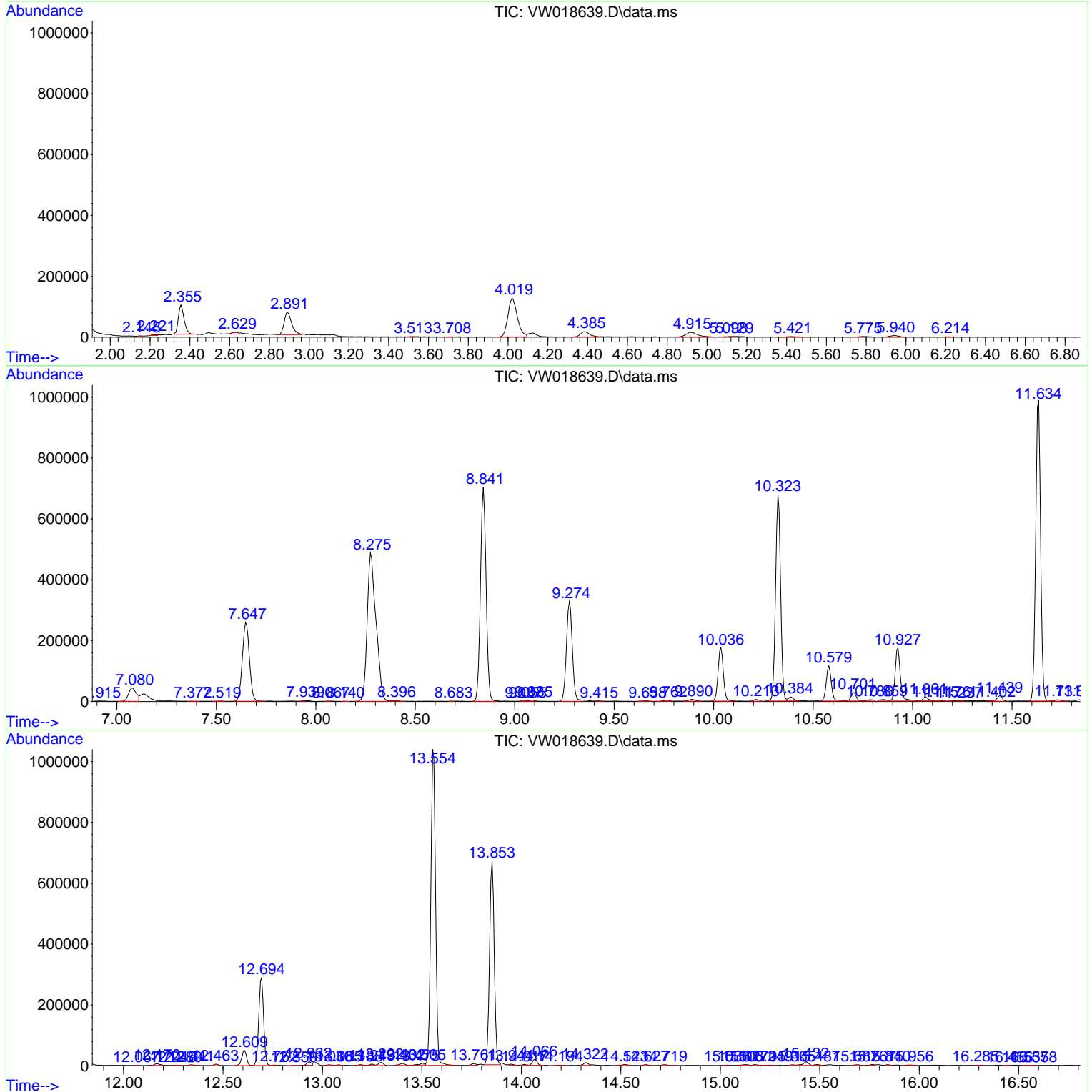
Sum of corrected areas: 12840431

Data Path : Z:\voasrv\HPCHEM1\MSVOA_W\Data\VW041321\
 Data File : VW018639.D
 Acq On : 13 Apr 2021 13:42
 Operator : SY/VA
 Sample : VIBLK23
 Misc : 6.36G/10ML/MSVOA_W/SOIL
 ALS Vial : 7 Sample Multiplier: 1

Instrument :
 MSVOA_W
 ClientSampleId :
 VIBLK23

Quant Method : Z:\voasrv\HPCHEM1\MSVOA_W\Method\SOM2WLM031921S.M
 Quant Title : VOC Analysis

TIC Library : C:\DATABASE\NIST11.L
 TIC Integration Parameters: LSCINT.P



Data Path : Z:\voasrv\HPCHEM1\MSVOA_W\Data\VW041321\
Data File : VW018639.D
Acq On : 13 Apr 2021 13:42
Operator : SY/VA
Sample : VIBLK23
Misc : 6.36G/10ML/MSVOA_W/SOIL
ALS Vial : 7 Sample Multiplier: 1

Instrument :
MSVOA_W
ClientSampleId :
VIBLK23

Quant Method : Z:\voasrv\HPCHEM1\MSVOA_W\Method\SOM2WLM031921S.M
Quant Title : VOC Analysis

TIC Library : C:\DATABASE\NIST11.L
TIC Integration Parameters: LSCINT.P

No Library Search Compounds Detected

Data Path : Z:\voasrv\HPCHEM1\MSVOA_W\Data\VW041321\
Data File : VW018639.D
Acq On : 13 Apr 2021 13:42
Operator : SY/VA
Sample : VIBLK23
Misc : 6.36G/10ML/MSVOA_W/SOIL
ALS Vial : 7 Sample Multiplier: 1

Instrument :
MSVOA_W
ClientSampled :
VIBLK23

Quant Method : Z:\voasrv\HPCHEM1\MSVOA_W\Method\SOM2WLM031921S.M
Quant Title : VOC Analysis

TIC Library : C:\DATABASE\NIST11.L
TIC Integration Parameters: LSCINT.P

TIC Top Hit name	RT	EstConc	Units	Response	--Internal Standard--		
					#	RT	Resp Conc
