

Data Path : Z:\VOASRV\HPCHEM1\MSVOA W\DATA\VW041519\
 Data File : VW009988.D
 Acq On : 15 Apr 2019 23:13
 Operator : SY/VA
 Sample : K2403-10
 Misc : 4.82G/10ML/MSVOA W/SOIL
 ALS Vial : 1 Sample Multiplier: 1

Instrument :
 MSVOA_W
 ClientSampleId :
 A5127

Integration Parameters: LSCINT.P

Integrator: RTE
 Smoothing : OFF
 Sampling : 1
 Start Thrs: 0.2
 Stop Thrs : 0

Filtering: 5
 Min Area: 0 % of largest Peak
 Max Peaks: 100
 Peak Location: TOP

If leading or trailing edge < 100 prefer < Baseline drop else tangent >
 Peak separation: 5

Method : Z:\VOASRV\HPCHEM1\MSVOA_W\METHOD\SOM2WLM041519S.M
 Title : VOC Analysis

Signal : TIC

peak #	R.T. min	first scan	max scan	last scan	PK TY	peak height	corr. area	corr. % max.	% of total
1	2.361	69	75	87	rBV	102347	255695	9.85%	1.257%
2	2.892	155	162	175	rVB	98499	268783	10.35%	1.322%
3	3.849	315	319	322	rBV5	2346	4245	0.16%	0.021%
4	4.013	333	346	358	rBV	252148	829936	31.96%	4.081%
5	4.397	403	409	414	rBV7	2009	5052	0.19%	0.025%
6	4.440	414	416	418	rVB2	1113	925	0.04%	0.005%
7	4.501	422	426	427	rVB2	951	1002	0.04%	0.005%
8	4.519	427	429	434	rBV3	1045	1609	0.06%	0.008%
9	4.653	449	451	454	rBV3	1160	1199	0.05%	0.006%
10	4.702	457	459	462	rVB3	1492	1357	0.05%	0.007%
11	4.757	465	468	469	rBV3	829	963	0.04%	0.005%
12	4.916	479	494	509	rVV4	9494	40135	1.55%	0.197%
13	5.098	521	524	525	rBV2	1535	1455	0.06%	0.007%
14	5.159	531	534	537	rBV3	1086	1096	0.04%	0.005%
15	5.355	560	566	568	rBV4	1517	1941	0.07%	0.010%
16	5.434	576	579	583	rBV3	1121	1811	0.07%	0.009%
17	5.763	630	633	634	rBV	1184	1220	0.05%	0.006%
18	5.928	652	660	664	rVV7	3518	10026	0.39%	0.049%
19	6.367	730	732	735	rBV2	816	1062	0.04%	0.005%
20	6.391	735	736	739	rBV2	1137	1058	0.04%	0.005%
21	6.488	750	752	757	rVB5	1268	1852	0.07%	0.009%
22	6.531	757	759	763	rBV3	898	1251	0.05%	0.006%
23	6.665	780	781	785	rVB2	912	1003	0.04%	0.005%
24	6.708	785	788	791	rBV3	1092	1740	0.07%	0.009%
25	6.897	809	819	829	rBV7	6824	18917	0.73%	0.093%
26	7.080	837	849	861	rBV	129552	376171	14.49%	1.850%
27	7.311	886	887	890	rVB3	1111	924	0.04%	0.005%
28	7.342	890	892	894	rBV3	943	997	0.04%	0.005%
29	7.494	914	917	918	rBV3	861	948	0.04%	0.005%
30	7.561	926	928	931	rBV3	830	1039	0.04%	0.005%
31	7.647	931	942	955	rVV	458299	1114183	42.91%	5.479%
32	7.738	955	957	960	rVB3	1120	1105	0.04%	0.005%
33	7.946	989	991	994	rVB4	930	1013	0.04%	0.005%
34	8.104	1013	1017	1021	rVB5	791	1105	0.04%	0.005%

Data Path : Z:\VOASRV\HPCHEM1\MSVOA W\DATA\VW041519\
 Data File : VW009988.D
 Acq On : 15 Apr 2019 23:13
 Operator : SY/VA
 Sample : K2403-10
 Misc : 4.82G/10ML/MSVOA W/SOIL
 ALS Vial : 1 Sample Multiplier: 1

Instrument :
 MSVOA_W
 ClientSampleId :
 A5127

Integration Parameters: LSCINT.P

Integrator: RTE
 Smoothing : OFF
 Sampling : 1
 Start Thrs: 0.2
 Stop Thrs : 0

Filtering: 5
 Min Area: 0 % of largest Peak
 Max Peaks: 100
 Peak Location: TOP

If leading or trailing edge < 100 prefer < Baseline drop else tangent >
 Peak separation: 5

Method : Z:\VOASRV\HPCHEM1\MSVOA_W\METHOD\SOM2WLM041519S.M
 Title : VOC Analysis

35	8.275	1034	1045	1062	rBV2	837877	2596808	100.00%	12.771%
36	8.555	1086	1091	1099	rVB6	5034	9316	0.36%	0.046%
37	8.695	1109	1114	1121	rVB9	4414	11126	0.43%	0.055%
38	8.842	1129	1138	1148	rBV	816124	1603793	61.76%	7.887%
39	9.025	1164	1168	1171	rBV5	1297	2470	0.10%	0.012%
40	9.073	1173	1176	1181	rVB6	3279	6157	0.24%	0.030%
41	9.275	1198	1209	1224	rBV	622806	1278547	49.24%	6.288%
42	9.409	1226	1231	1239	rVB2	20900	42151	1.62%	0.207%
43	9.653	1267	1271	1276	rVV7	3615	6432	0.25%	0.032%
44	9.762	1287	1289	1292	rBV4	1115	1309	0.05%	0.006%
45	9.878	1306	1308	1313	rVB4	999	1541	0.06%	0.008%
46	10.037	1324	1334	1343	rBV	316619	588997	22.68%	2.897%
47	10.244	1366	1368	1372	rVB4	997	1271	0.05%	0.006%
48	10.323	1372	1381	1389	rBV	1153046	2000836	77.05%	9.840%
49	10.512	1403	1412	1416	rBV9	3219	7178	0.28%	0.035%
50	10.579	1416	1423	1431	rBV	236074	415761	16.01%	2.045%
51	10.707	1437	1444	1453	rVB	59584	108119	4.16%	0.532%
52	10.841	1461	1466	1468	rBV5	1946	3882	0.15%	0.019%
53	10.927	1473	1480	1491	rBV	620990	1008187	38.82%	4.958%
54	11.073	1497	1504	1510	rBV2	60788	104414	4.02%	0.513%
55	11.396	1553	1557	1564	rVB6	1324	3088	0.12%	0.015%
56	11.634	1587	1596	1605	rBV	1235973	2068466	79.65%	10.172%
57	11.841	1624	1630	1633	rBV7	2201	4135	0.16%	0.020%
58	11.951	1645	1648	1651	rVB4	1875	2484	0.10%	0.012%
59	11.981	1651	1653	1657	rBV4	1239	1895	0.07%	0.009%
60	12.055	1662	1665	1667	rVB4	1060	1090	0.04%	0.005%
61	12.103	1670	1673	1676	rVB4	1103	1356	0.05%	0.007%
62	12.237	1692	1695	1696	rBV3	1318	1119	0.04%	0.006%
63	12.341	1707	1712	1720	rBV2	34691	55624	2.14%	0.274%
64	12.463	1731	1732	1736	rVB3	1089	1023	0.04%	0.005%
65	12.609	1746	1756	1762	rBV2	101208	180305	6.94%	0.887%
66	12.695	1763	1770	1778	rVV	655503	1078573	41.53%	5.304%
67	12.762	1778	1781	1785	rVB4	3423	5042	0.19%	0.025%
68	12.932	1806	1809	1811	rBV3	3611	4530	0.17%	0.022%
69	13.048	1826	1828	1831	rVB3	1234	1113	0.04%	0.005%
70	13.085	1831	1834	1837	rBV5	2062	2635	0.10%	0.013%
71	13.195	1848	1852	1855	rBV4	4056	5456	0.21%	0.027%

Data Path : Z:\VOASRV\HPCHEM1\MSVOA W\DATA\VW041519\
 Data File : VW009988.D
 Acq On : 15 Apr 2019 23:13
 Operator : SY/VA
 Sample : K2403-10
 Misc : 4.82G/10ML/MSVOA W/SOIL
 ALS Vial : 1 Sample Multiplier: 1

Instrument :
 MSVOA_W
 ClientSampleId :
 A5127

Integration Parameters: LSCINT.P

Integrator: RTE
 Smoothing : OFF Filtering: 5
 Sampling : 1 Min Area: 0 % of largest Peak
 Start Thrs: 0.2 Max Peaks: 100
 Stop Thrs : 0 Peak Location: TOP

If leading or trailing edge < 100 prefer < Baseline drop else tangent >
 Peak separation: 5

Method : Z:\VOASRV\HPCHEM1\MSVOA_W\METHOD\SOM2WLM041519S.M
 Title : VOC Analysis

72	13.274	1857	1865	1875	rVB3	27618	57464	2.21%	0.283%
73	13.402	1880	1886	1893	rBV3	37078	64735	2.49%	0.318%
74	13.560	1905	1912	1922	rBV	1250128	1960933	75.51%	9.643%
75	13.652	1923	1927	1934	rVB	16773	24634	0.95%	0.121%
76	13.859	1952	1961	1968	rBV	1114002	1857387	71.53%	9.134%
77	14.018	1985	1987	1992	rBV6	2882	4638	0.18%	0.023%
78	14.079	1992	1997	2004	rVB	29348	48282	1.86%	0.237%
79	14.194	2014	2016	2017	rBV2	1589	1518	0.06%	0.007%
80	14.329	2032	2038	2044	rBV3	31951	53706	2.07%	0.264%
81	14.438	2052	2056	2057	rVB4	1643	1814	0.07%	0.009%
82	14.530	2064	2071	2076	rBV4	11109	19642	0.76%	0.097%
83	14.633	2084	2088	2092	rVB7	2234	3331	0.13%	0.016%
84	14.798	2113	2115	2119	rVB4	1523	2185	0.08%	0.011%
85	14.871	2119	2127	2132	rBV10	3601	10256	0.39%	0.050%
86	15.054	2155	2157	2160	rBV4	1325	1637	0.06%	0.008%
87	15.121	2166	2168	2169	rBV2	2029	1253	0.05%	0.006%
88	15.182	2173	2178	2186	rBV7	7415	14231	0.55%	0.070%
89	15.255	2186	2190	2195	rBV4	7437	11959	0.46%	0.059%
90	15.420	2214	2217	2219	rVB4	1266	1509	0.06%	0.007%
91	15.444	2219	2221	2224	rBV4	838	1134	0.04%	0.006%
92	15.505	2228	2231	2236	rVB2	4201	7180	0.28%	0.035%
93	15.566	2236	2241	2245	rBV6	3760	6532	0.25%	0.032%
94	15.639	2250	2253	2254	rBV3	1013	913	0.04%	0.004%
95	15.658	2254	2256	2257	rBV	1247	1015	0.04%	0.005%
96	16.103	2326	2329	2332	rBV4	1737	2027	0.08%	0.010%
97	16.407	2378	2379	2382	rBV3	1250	962	0.04%	0.005%
98	16.621	2410	2414	2416	rBV4	1141	1707	0.07%	0.008%
99	16.645	2416	2418	2420	rVB3	2054	1124	0.04%	0.006%
100	16.682	2420	2424	2426	rBV3	1682	1626	0.06%	0.008%

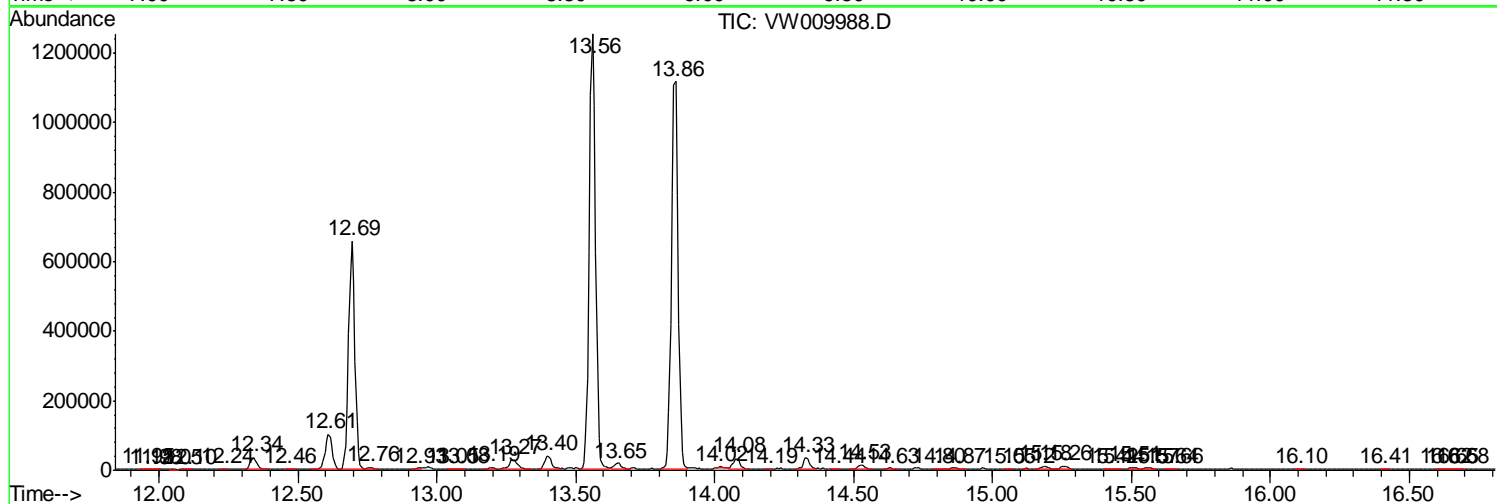
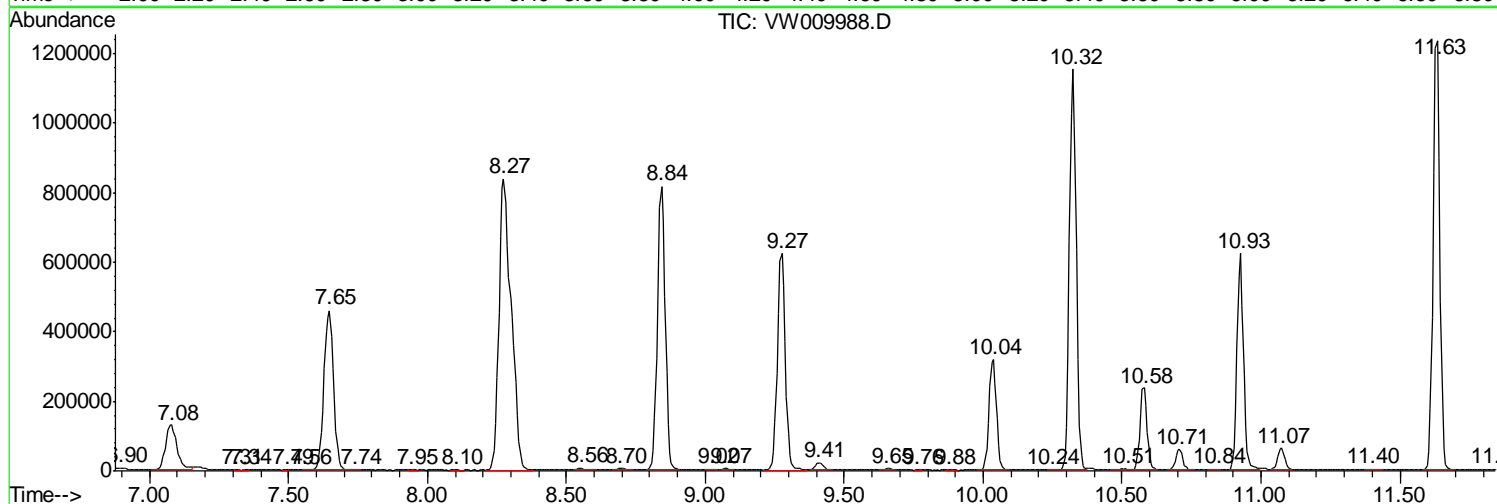
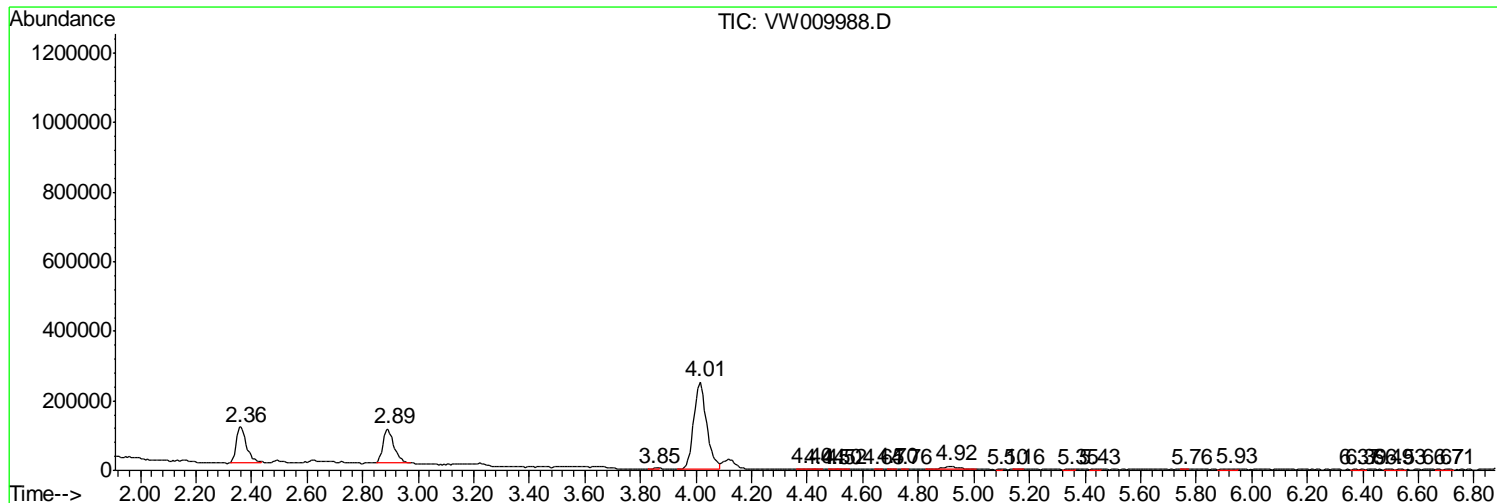
Sum of corrected areas: 20334381

Data Path : Z:\VOASRV\HPCHEM1\MSVOA W\DATA\VW041519\
 Data File : VW009988.D
 Acq On : 15 Apr 2019 23:13
 Operator : SY/VA
 Sample : K2403-10
 Misc : 4.82G/10ML/MSVOA W/SOIL
 ALS Vial : 1 Sample Multiplier: 1

Instrument :
 MSVOA_W
 ClientSampleId :
 A5127

Quant Method : Z:\VOASRV\HPCHEM1\MSVOA_W\METHOD\SOM2WLM041519S.M
 Quant Title : VOC Analysis

TIC Library : C:\DATABASE\NIST11.L
 TIC Integration Parameters: LSCINT.P



Data Path : Z:\VOASRV\HPCHEM1\MSVOA W\DATA\VW041519\
 Data File : VW009988.D
 Acq On : 15 Apr 2019 23:13
 Operator : SY/VA
 Sample : K2403-10
 Misc : 4.82G/10ML/MSVOA W/SOIL
 ALS Vial : 1 Sample Multiplier: 1

Instrument :
 MSVOA_W
 ClientSampled :
 A5127

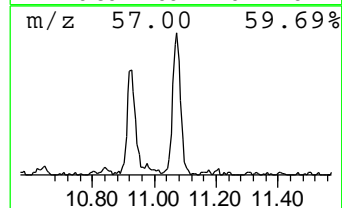
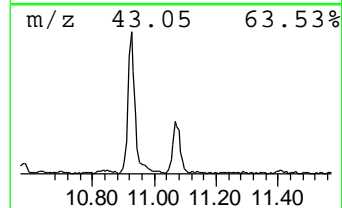
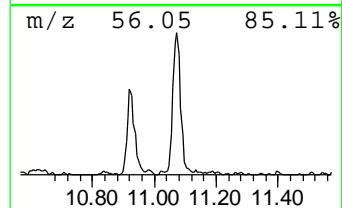
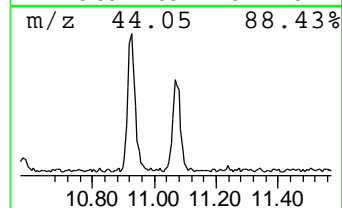
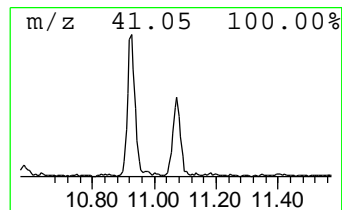
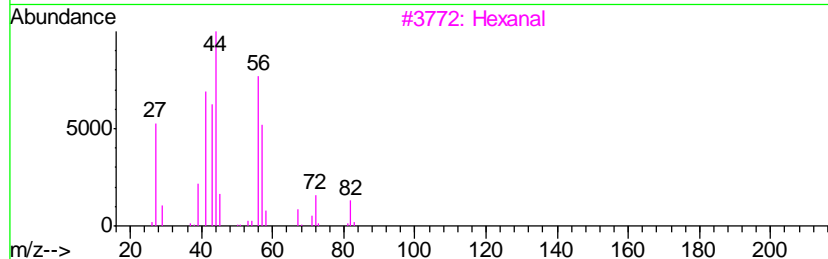
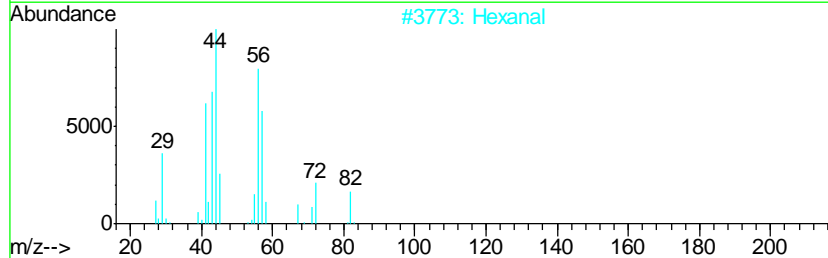
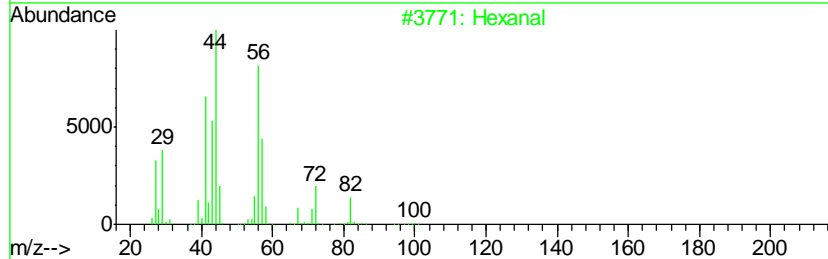
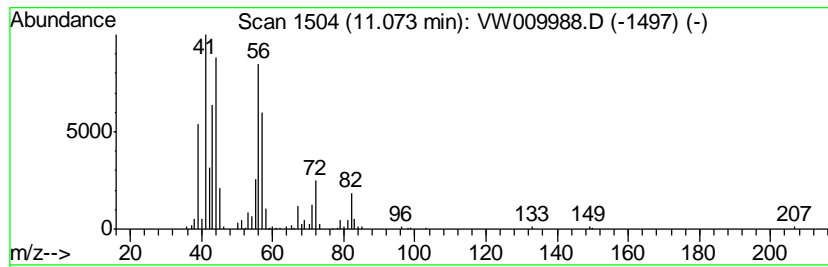
Quant Method : Z:\VOASRV\HPCHEM1\MSVOA_W\METHOD\SOM2WLM041519S.M
 Quant Title : VOC Analysis

TIC Library : C:\DATABASE\NIST11.L
 TIC Integration Parameters: LSCINT.P

 Peak Number 3 Hexanal Concentration Rank 4

R.T.	EstConc	Area	Relative to ISTD	R.T.
11.07	1.26 ug/L	104414	Chlorobenzene-d5	11.63

Hit#	of	Tentative ID	MW	MolForm	CAS#	Qual
1	5	Hexanal	100	C6H12O	000066-25-1	64
2		Hexanal	100	C6H12O	000066-25-1	64
3		Hexanal	100	C6H12O	000066-25-1	59
4		Hexanal	100	C6H12O	000066-25-1	50
5		2,2-Dimethyl-3-hydroxypropionald...	102	C5H10O2	000597-31-9	37



Data Path : Z:\VOASRV\HPCHEM1\MSVOA_W\DATA\VW041519\
Data File : VW009988.D
Acq On : 15 Apr 2019 23:13
Operator : SY/VA
Sample : K2403-10
Misc : 4.82G/10ML/MSVOA_W/SOIL
ALS Vial : 1 Sample Multiplier: 1

Instrument :
MSVOA_W
ClientSampleId :
A5127

Quant Method : Z:\VOASRV\HPCHEM1\MSVOA_W\METHOD\SOM2WLM041519S.M
Quant Title : VOC Analysis

TIC Library : C:\DATABASE\NIST11.L
TIC Integration Parameters: LSCINT.P

TIC Top Hit name	RT	EstConc	Units	Response	--Internal Standard--			
					#	RT	Resp	Conc
Hexanal	11.07	1.3	ug/L	104414	2	11.63	2068470	25.0