

Data Path : Z:\VOASRV\HPCHEM1\MSVOA W\DATA\VW041520\
 Data File : VW015206.D
 Acq On : 15 Apr 2020 17:05
 Operator : SY/VA
 Sample : L2242-01
 Misc : 5.06G/5ML/MSVOA W/SOIL
 ALS Vial : 14 Sample Multiplier: 1

Instrument :
 MSVOA_W
 ClientSampled :

Quant Time: Apr 16 04:24:59 2020
 Quant Method : Z:\VOASRV\HPCHEM1\MSVOA_W\METHOD\82W041520S.M
 Quant Title : SW846 8260
 QLast Update : Wed Apr 15 14:44:16 2020
 Response via : Initial Calibration

Internal Standards	R.T.	QIon	Response	Conc	Units	Dev(Min)
1) Pentafluorobenzene	7.95	168	199599	50.00	ug/l	0.00
34) 1,4-Difluorobenzene	8.84	114	358526	50.00	ug/l	0.00
63) Chlorobenzene-d5	11.63	117	300452	50.00	ug/l	0.00
72) 1,4-Dichlorobenzene-d4	13.55	152	118235	50.00	ug/l	0.00

System Monitoring Compounds

33) 1,2-Dichloroethane-d4	8.31	65	128234	67.94	ug/l	0.00
Spiked Amount	50.000		Recovery	=	135.88%	
35) Dibromofluoromethane	7.88	113	121934	61.50	ug/l	0.00
Spiked Amount	50.000		Recovery	=	123.00%	
50) Toluene-d8	10.32	98	467805	58.08	ug/l	0.00
Spiked Amount	50.000		Recovery	=	116.16%	
62) 4-Bromofluorobenzene	12.62	95	153764	54.51	ug/l	0.00
Spiked Amount	50.000		Recovery	=	109.02%	

Target Compounds

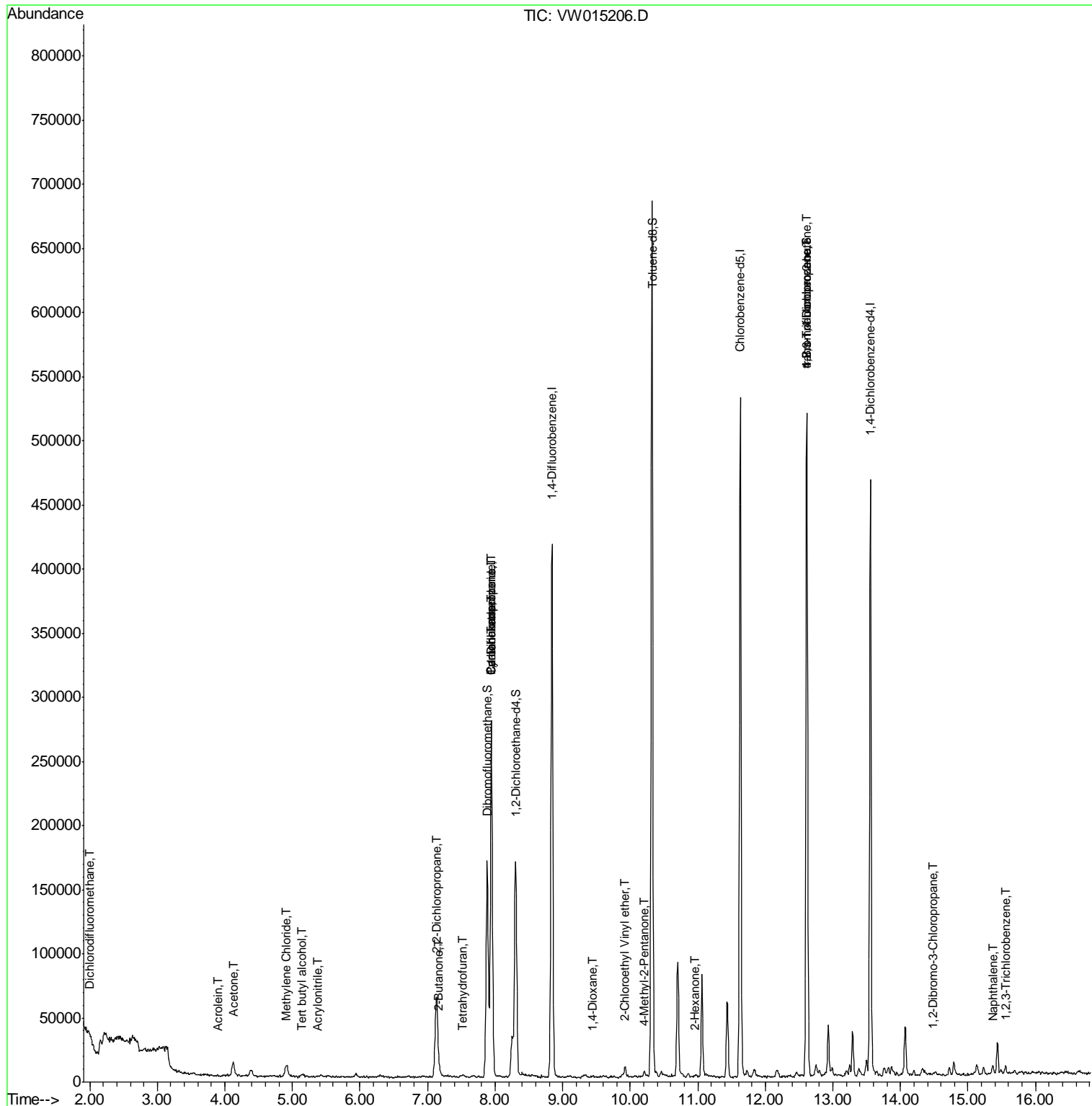
						Qvalue
2) Dichlorodifluoromethane	2.01	85	136	2.237	ug/l #	40
11) Tert butyl alcohol	5.15	59	4003	28.571	ug/l #	88
13) Acrolein	3.90	56	266	1.826	ug/l #	74
15) Acrylonitrile	5.37	53	633	1.472	ug/l #	78
16) Acetone	4.12	43	20951	62.325	ug/l	90
20) Methylene Chloride	4.91	84	7010	3.011	ug/l #	85
25) 2-Butanone	7.17	43	2070	3.848	ug/l	91
26) 2,2-Dichloropropane	7.14	77	5290	2.154	ug/l #	52
29) Tetrahydrofuran	7.51	42	410	1.163	ug/l #	1
31) Cyclohexane	7.94	56	5040	1.278	ug/l #	37
36) 1,1-Dichloropropene	7.95	75	17016	5.313	ug/l #	50
38) Carbon Tetrachloride	7.95	117	20948	7.114	ug/l #	18
49) 1,4-Dioxane	9.45	88	148	8.342	ug/l #	1
51) 4-Methyl-2-Pentanone	10.21	43	4370	3.172	ug/l	93
58) 2-Chloroethyl Vinyl ether	9.93	63	4174	3.862	ug/l	90
59) 2-Hexanone	10.97	43	1542	1.783	ug/l	97
76) 1,2,3-Trichloropropane	12.62	75	77691	76.760	ug/l #	100
81) trans-1,4-Dichloro-2-buten	12.62	75	77691	148.511	ug/l #	15
92) 1,2-Dibromo-3-Chloropropan	14.47	75	261	1.091	ug/l #	67
95) Naphthalene	15.36	128	5746	1.399	ug/l #	91
96) 1,2,3-Trichlorobenzene	15.56	180	2154	1.176	ug/l	91

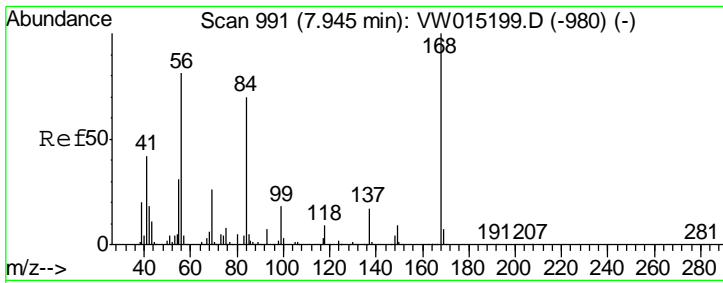
(#) = qualifier out of range (m) = manual integration (+) = signals summed

Data Path : Z:\VOASRV\HPCHEM1\MSVOA W\DATA\VW041520\
 Data File : VW015206.D
 Acq On : 15 Apr 2020 17:05
 Operator : SY/VA
 Sample : L2242-01
 Misc : 5.06G/5ML/MSVOA W/SOIL
 ALS Vial : 14 Sample Multiplier: 1

Instrument :
 MSVOA_W
 Client Sampled :

Quant Time: Apr 16 04:24:59 2020
 Quant Method : Z:\VOASRV\HPCHEM1\MSVOA_W\METHOD\82W041520S.M
 Quant Title : SW846 8260
 QLast Update : Wed Apr 15 14:44:16 2020
 Response via : Initial Calibration

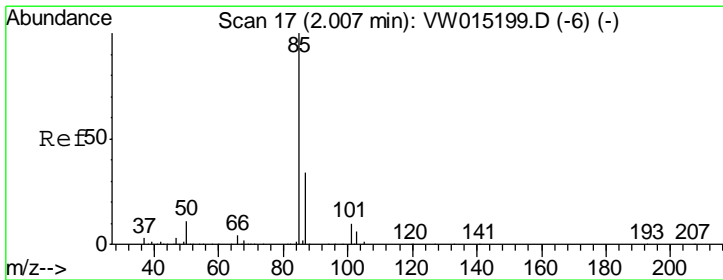
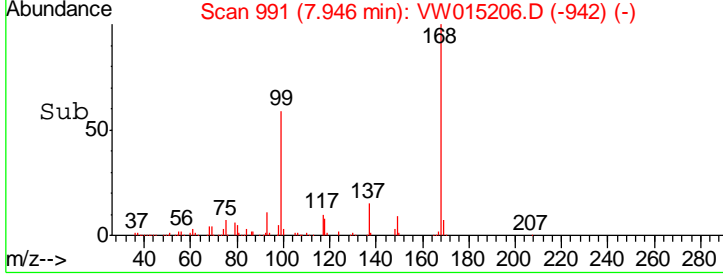
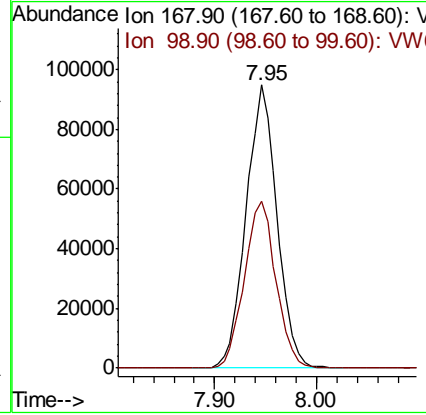
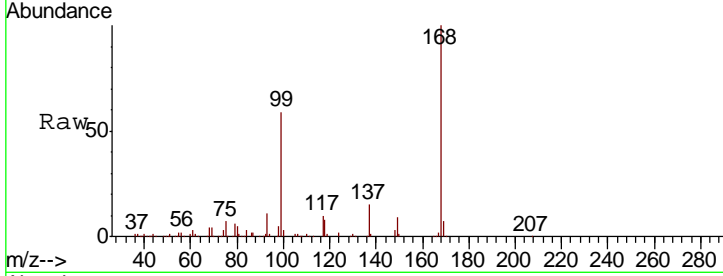




#1
 Pentafluorobenzene
 Concen: 50.000 ug/l
 RT: 7.95 min Scan# 991
 Delta R.T. 0.00 min
 Lab File: VW015206.D
 Acq: 15 Apr 2020 17:05

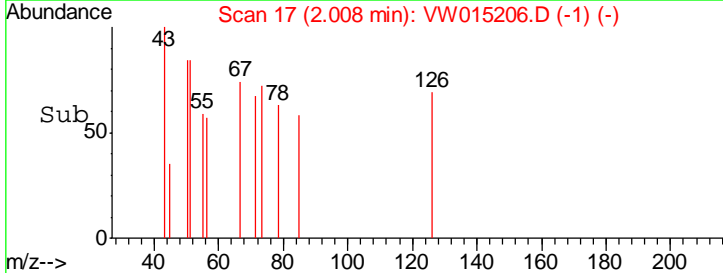
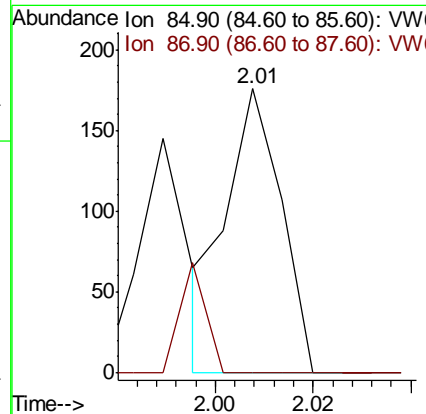
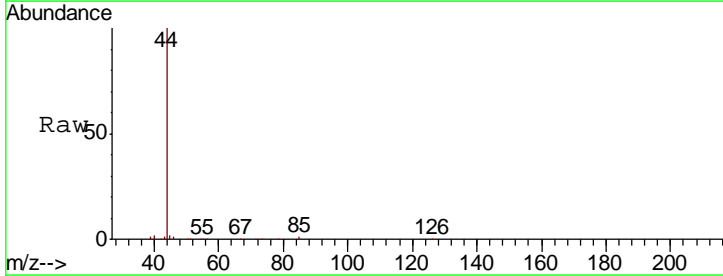
Instrument :
 MSVOA_W
 ClientSampled :

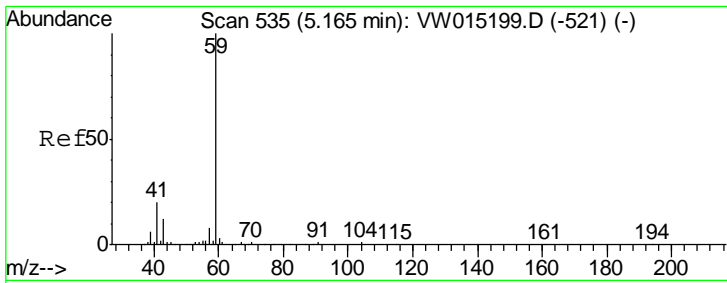
Tgt Ion	Resp	Lower	Upper
168	100		
99	58.8	48.5	72.7



#2
 Dichlorodifluoromethane
 Concen: 2.237 ug/l
 RT: 2.01 min Scan# 17
 Delta R.T. 0.00 min
 Lab File: VW015206.D
 Acq: 15 Apr 2020 17:05

Tgt Ion	Resp	Lower	Upper
85	100		
87	0.0	17.2	51.6#

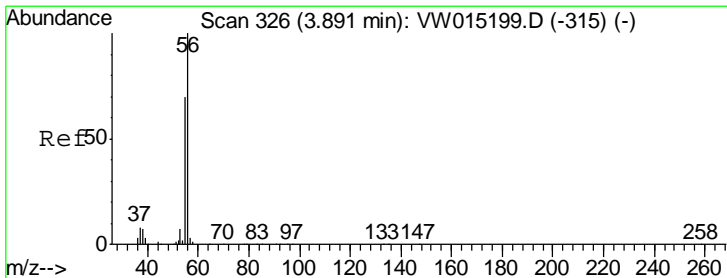
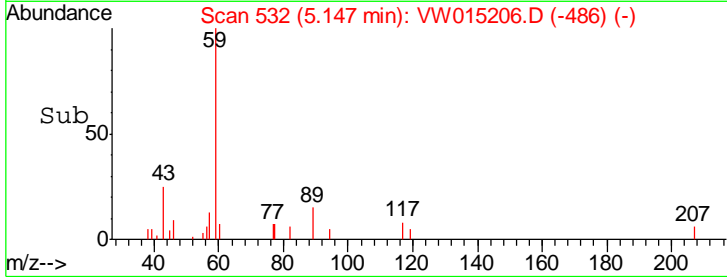
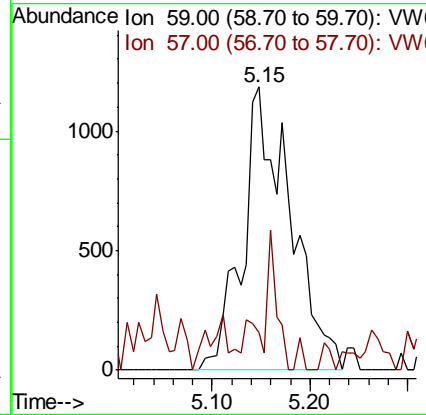
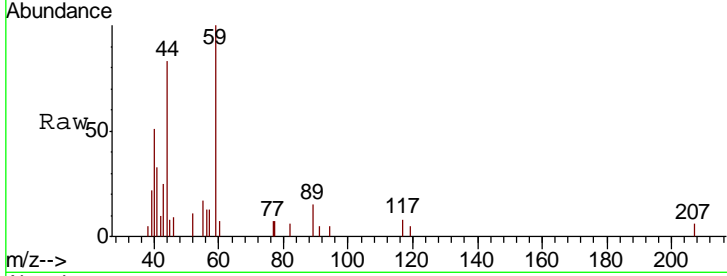




#11
 Tert butyl alcohol
 Concen: 28.571 ug/l
 RT: 5.15 min Scan# 532
 Delta R.T. -0.02 min
 Lab File: VW015206.D
 Acq: 15 Apr 2020 17:05

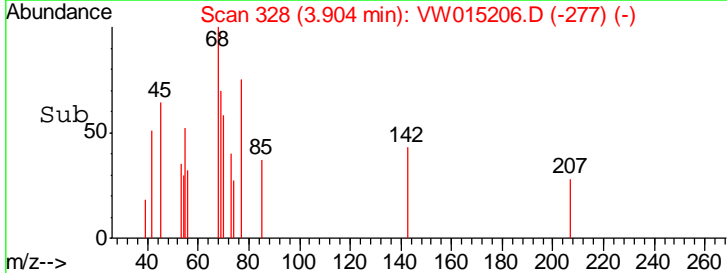
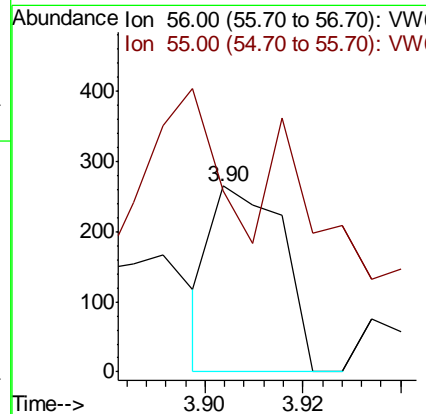
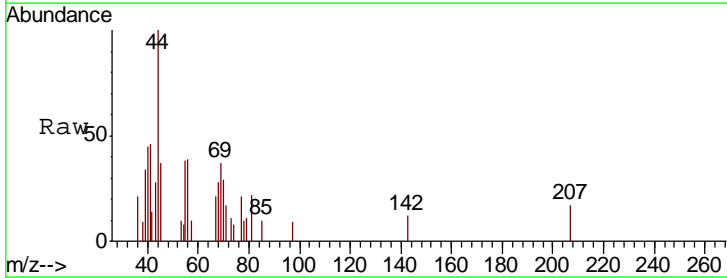
Instrument :
 MSVOA_W
 ClientSampled :

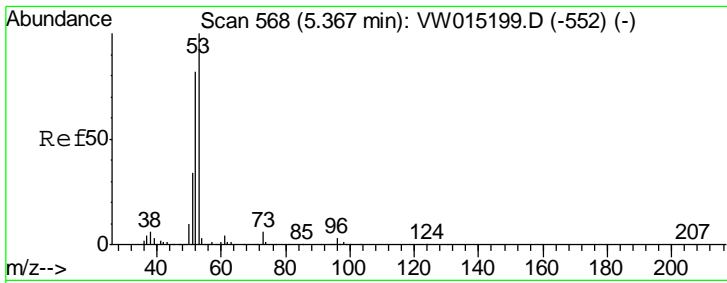
Tgt Ion: 59 Resp: 4003
 Ion Ratio Lower Upper
 59 100
 57 14.9 8.4 12.6#



#13
 Acrolein
 Concen: 1.826 ug/l
 RT: 3.90 min Scan# 328
 Delta R.T. 0.01 min
 Lab File: VW015206.D
 Acq: 15 Apr 2020 17:05

Tgt Ion: 56 Resp: 266
 Ion Ratio Lower Upper
 56 100
 55 91.7 56.2 84.2#

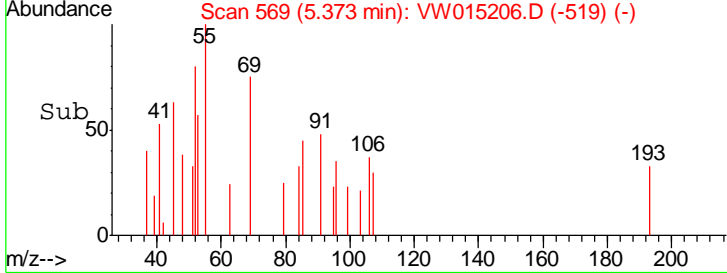
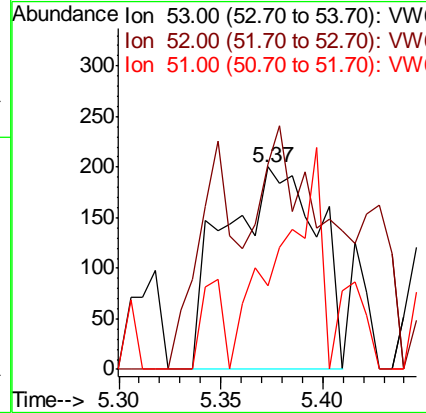
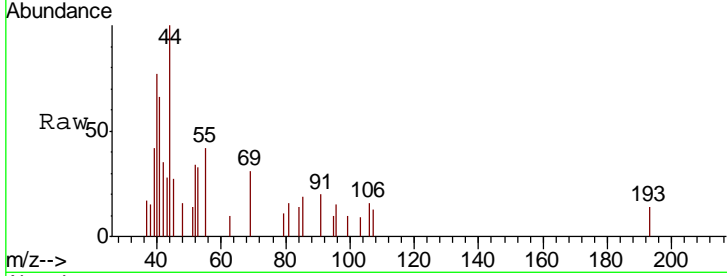




#15
 Acrylonitrile
 Concen: 1.472 ug/l
 RT: 5.37 min Scan# 569
 Delta R.T. 0.01 min
 Lab File: VW015206.D
 Acq: 15 Apr 2020 17:05

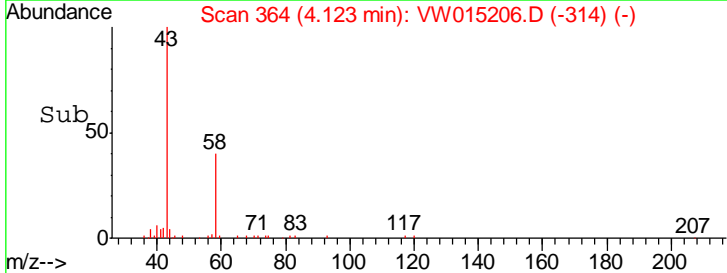
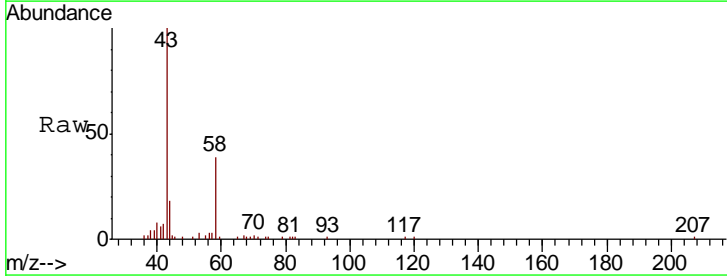
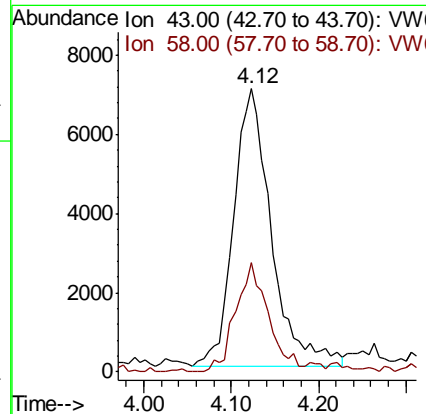
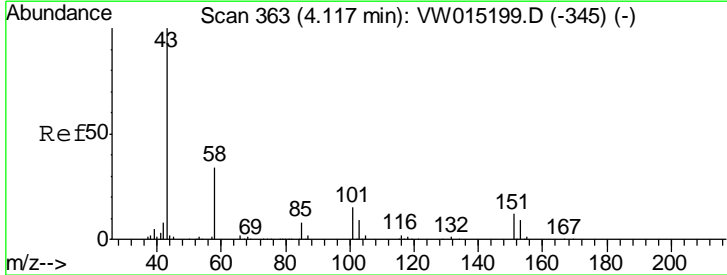
Instrument :
 MSVOA_W
 ClientSampled :

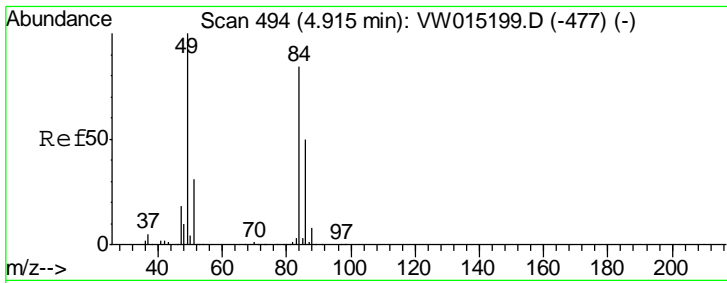
Tgt Ion	Resp	Lower	Upper
53	633		
52	86.1	65.2	97.8
51	0.0	28.2	42.4



#16
 Acetone
 Concen: 62.325 ug/l
 RT: 4.12 min Scan# 364
 Delta R.T. 0.01 min
 Lab File: VW015206.D
 Acq: 15 Apr 2020 17:05

Tgt Ion	Resp	Lower	Upper
43	20951		
58	39.5	27.0	40.4

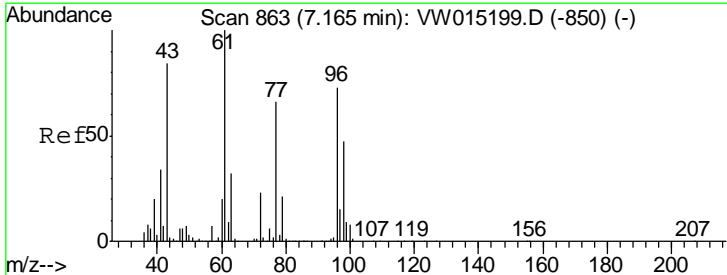
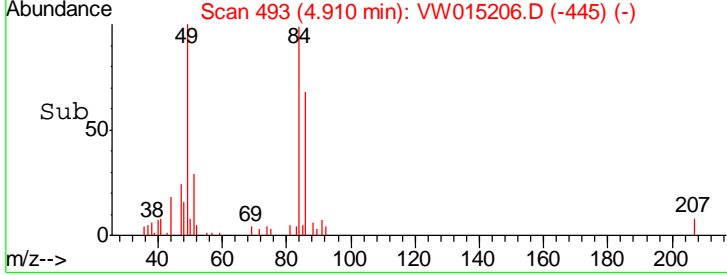
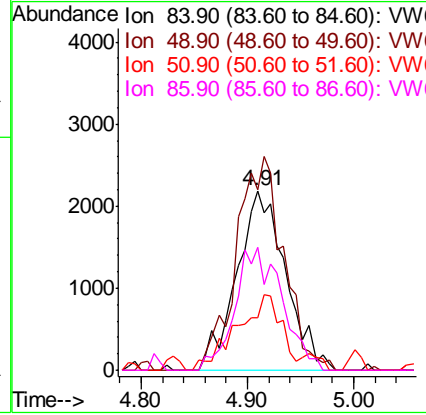
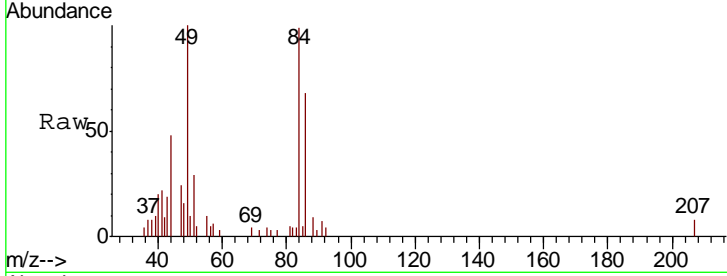




#20
 Methylene Chloride
 Concen: 3.011 ug/l
 RT: 4.91 min Scan# 493
 Delta R.T. -0.01 min
 Lab File: VW015206.D
 Acq: 15 Apr 2020 17:05

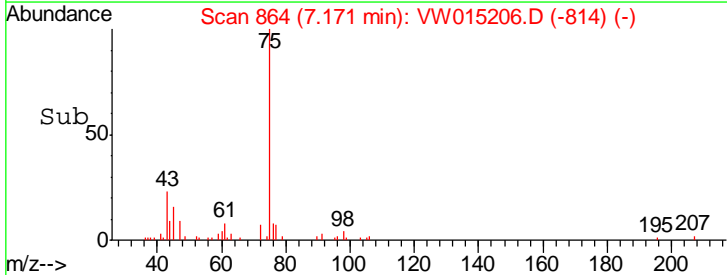
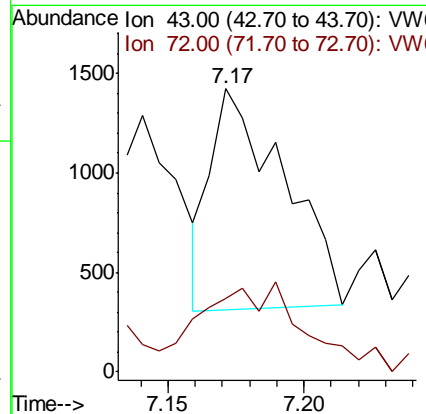
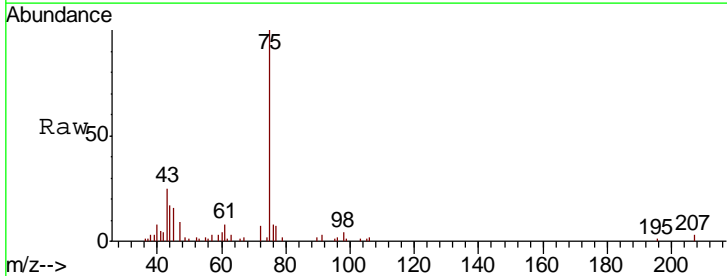
Instrument :
 MSVOA_W
 ClientSampled :

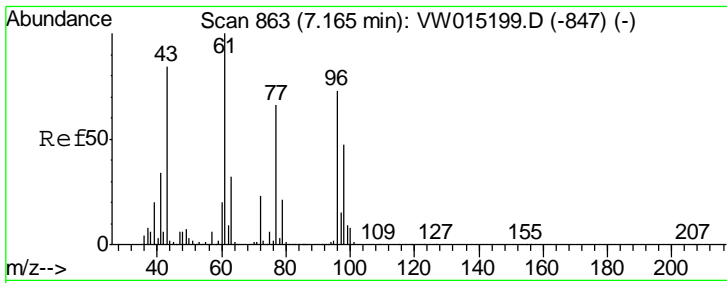
Tgt Ion	Resp	Lower	Upper
84	100		
49	100.8	95.4	143.0
51	29.0	29.8	44.8#
86	68.5	47.4	71.0



#25
 2-Butanone
 Concen: 3.848 ug/l
 RT: 7.17 min Scan# 864
 Delta R.T. 0.01 min
 Lab File: VW015206.D
 Acq: 15 Apr 2020 17:05

Tgt Ion	Resp	Lower	Upper
43	100		
72	22.1	21.6	32.4

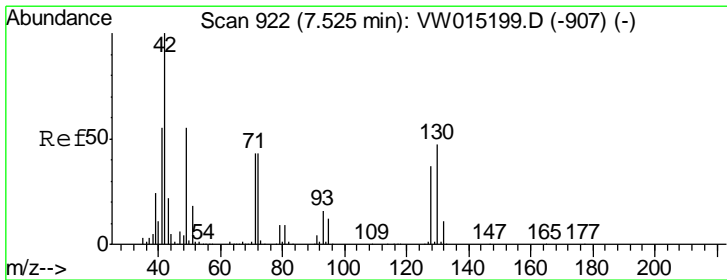
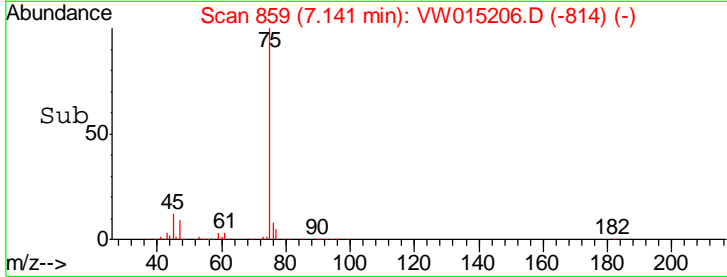
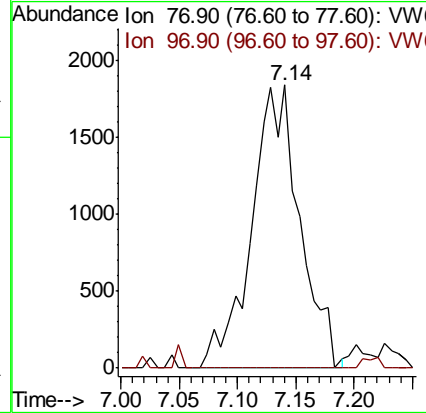
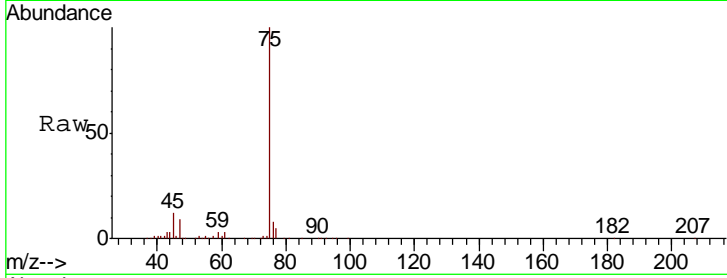




#26
 2,2-Dichloropropane
 Concen: 2.154 ug/l
 RT: 7.14 min Scan# 859
 Delta R.T. -0.02 min
 Lab File: VW015206.D
 Acq: 15 Apr 2020 17:05

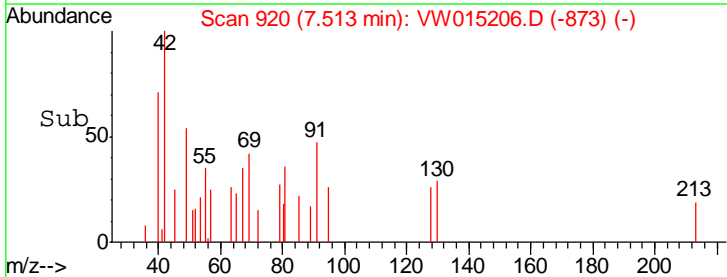
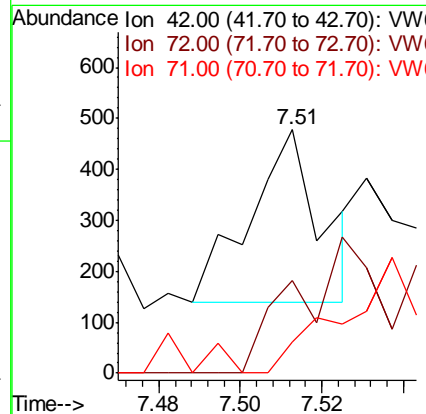
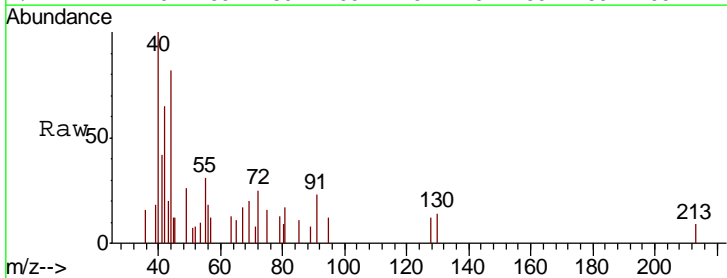
Instrument :
 MSVOA_W
 ClientSampled :

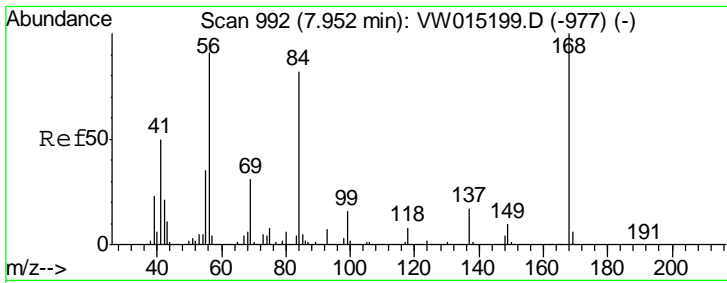
Tgt Ion: 77 Resp: 5290
 Ion Ratio Lower Upper
 77 100
 97 0.0 11.9 35.5#



#29
 Tetrahydrofuran
 Concen: 1.163 ug/l
 RT: 7.51 min Scan# 920
 Delta R.T. -0.01 min
 Lab File: VW015206.D
 Acq: 15 Apr 2020 17:05

Tgt Ion: 42 Resp: 410
 Ion Ratio Lower Upper
 42 100
 72 131.2 36.2 54.2#
 71 0.0 34.2 51.4#

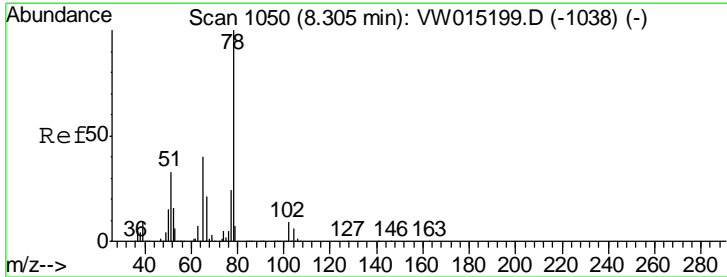
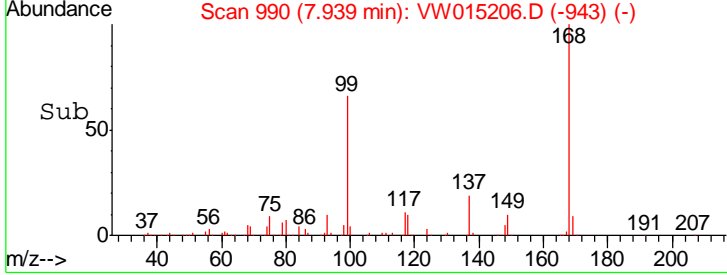
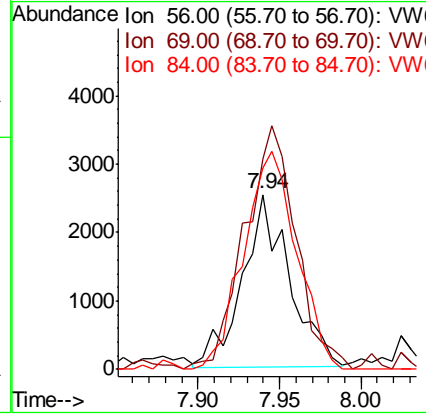
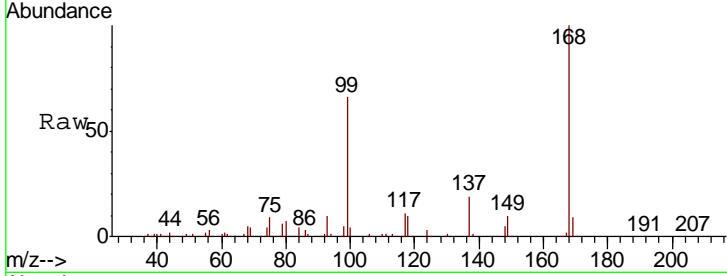




#31
 Cyclohexane
 Concen: 1.278 ug/l
 RT: 7.94 min Scan# 990
 Delta R.T. -0.01 min
 Lab File: VW015206.D
 Acq: 15 Apr 2020 17:05

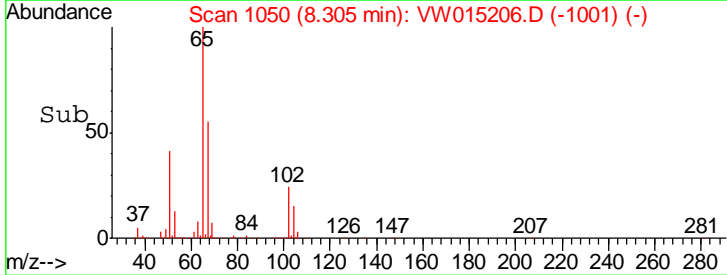
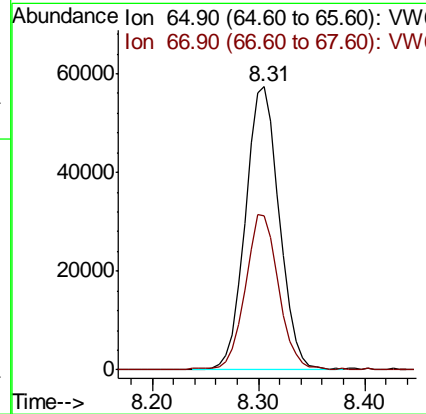
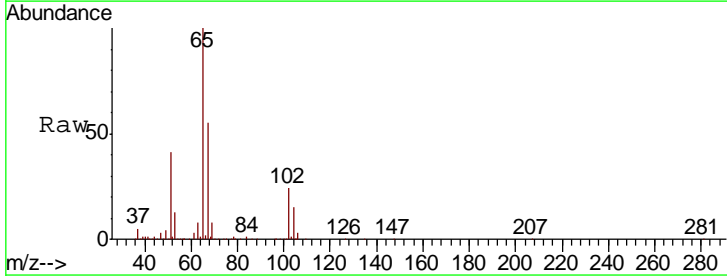
Instrument :
 MSVOA_W
 ClientSampled :

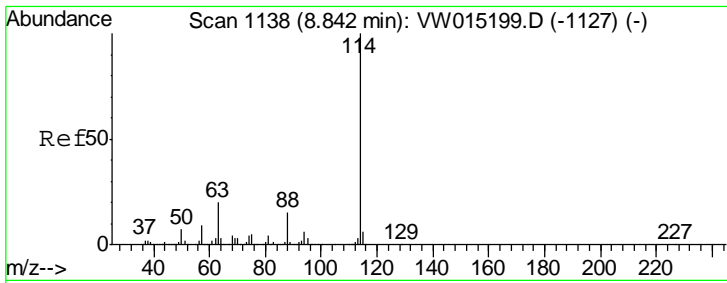
Tgt Ion	Resp	Lower	Upper
56	5040		
69	120.6	27.1	40.7#
84	118.3	71.9	107.9#



#33
 1,2-Dichloroethane-d4
 Concen: 67.944 ug/l
 RT: 8.31 min Scan# 1050
 Delta R.T. 0.00 min
 Lab File: VW015206.D
 Acq: 15 Apr 2020 17:05

Tgt Ion	Resp	Lower	Upper
65	128234		
67	54.2	0.0	107.0

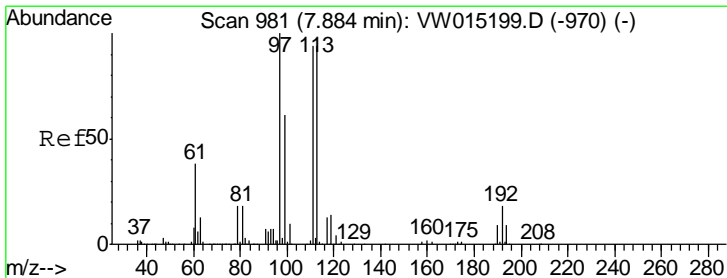
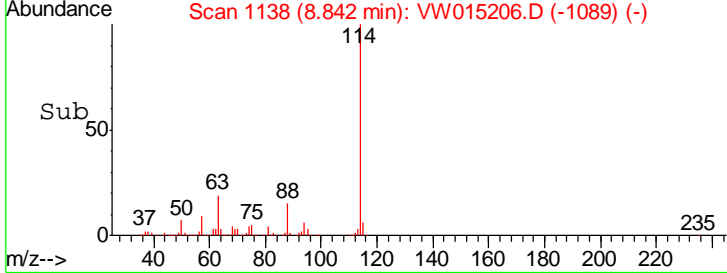
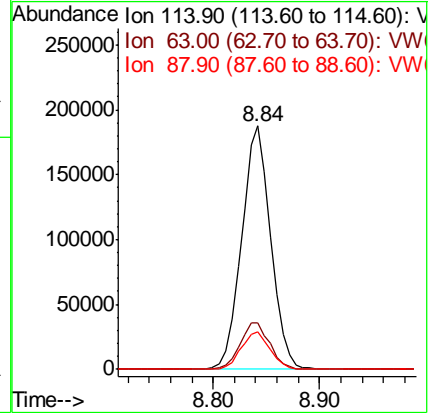
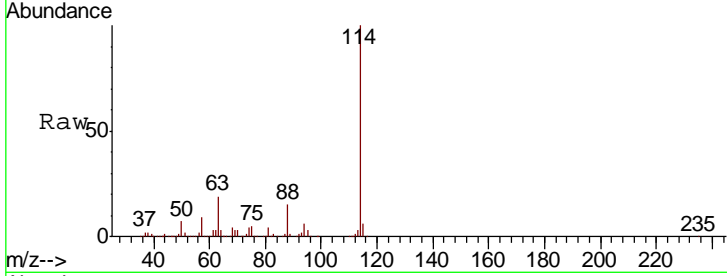




#34
 1,4-Difluorobenzene
 Concen: 50.000 ug/l
 RT: 8.84 min Scan# 1138
 Delta R.T. 0.00 min
 Lab File: VW015206.D
 Acq: 15 Apr 2020 17:05

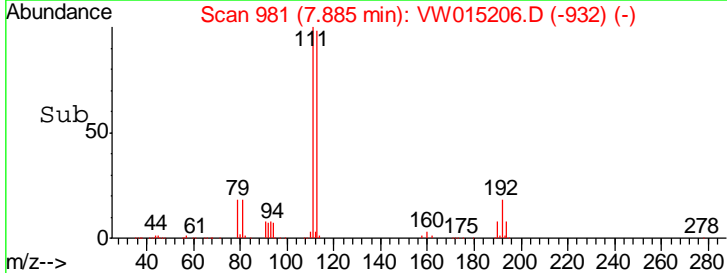
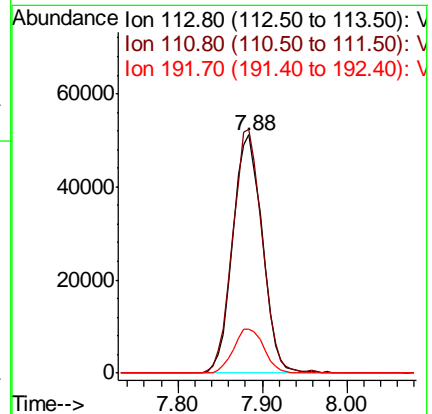
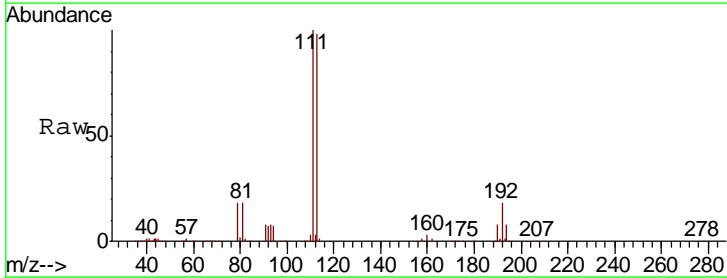
Instrument :
 MSVOA_W
 ClientSampled :

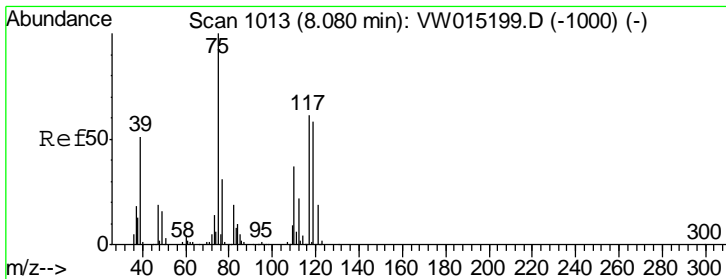
Tgt Ion	Resp	Lower	Upper
114	100		
63	19.1	0.0	39.8
88	15.3	0.0	30.2



#35
 Dibromofluoromethane
 Concen: 61.500 ug/l
 RT: 7.88 min Scan# 981
 Delta R.T. 0.00 min
 Lab File: VW015206.D
 Acq: 15 Apr 2020 17:05

Tgt Ion	Resp	Lower	Upper
113	100		
111	102.1	83.0	124.4
192	19.0	15.1	22.7

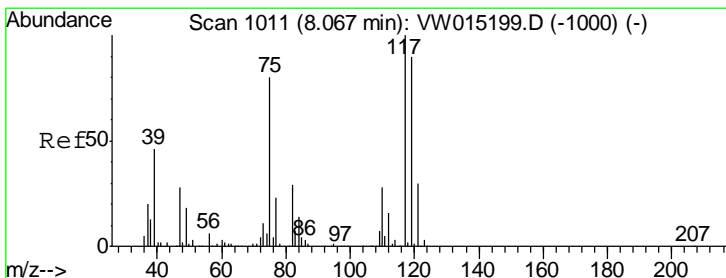
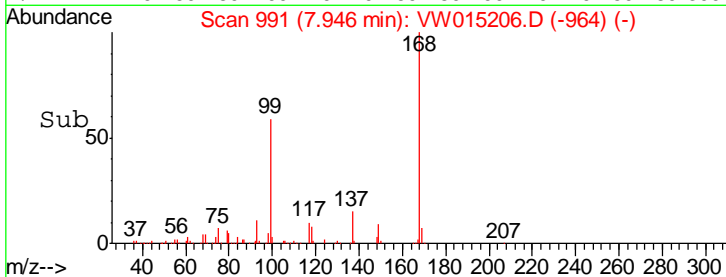
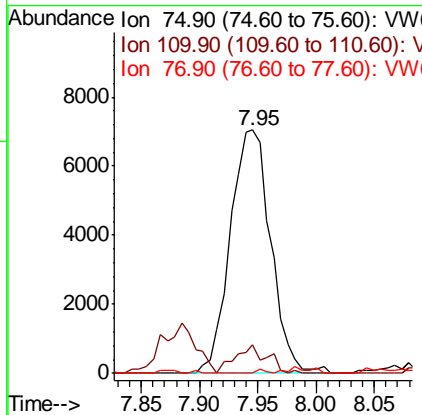
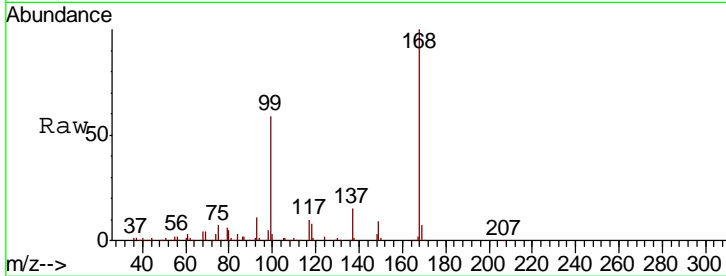




#36
 1,1-Dichloropropene
 Concen: 5.313 ug/l
 RT: 7.95 min Scan# 991
 Delta R.T. -0.13 min
 Lab File: VW015206.D
 Acq: 15 Apr 2020 17:05

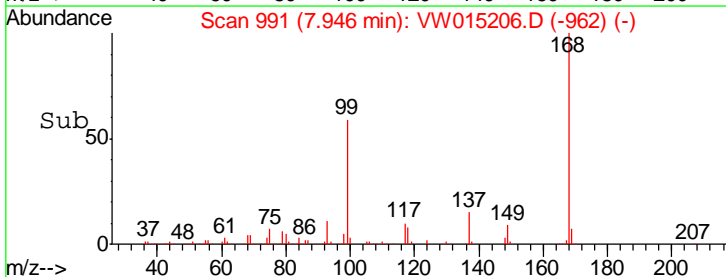
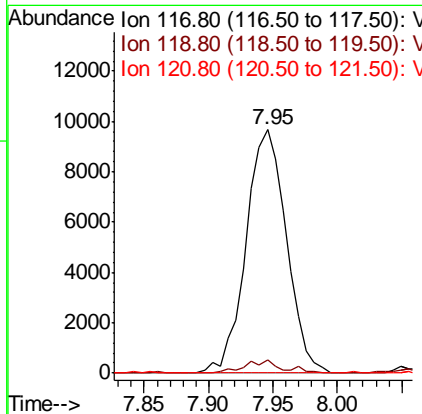
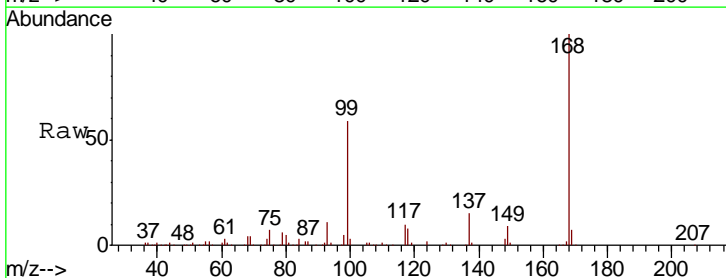
Instrument :
 MSVOA_W
 ClientSampled :

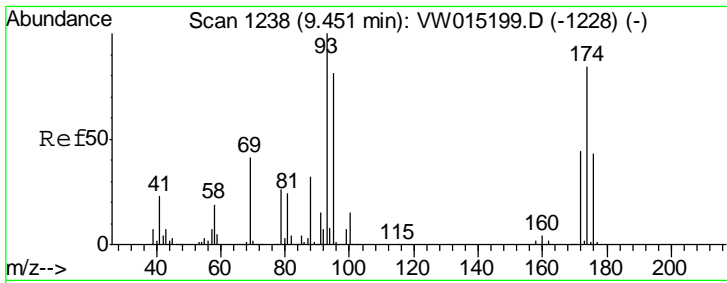
Tgt Ion	Resp	Lower	Upper
75	17016		
110	9.1	18.2	54.6#
77	0.4	24.5	36.7#



#38
 Carbon Tetrachloride
 Concen: 7.114 ug/l
 RT: 7.95 min Scan# 991
 Delta R.T. -0.12 min
 Lab File: VW015206.D
 Acq: 15 Apr 2020 17:05

Tgt Ion	Resp	Lower	Upper
117	20948		
119	5.2	72.3	108.5#
121	0.0	23.7	35.5#

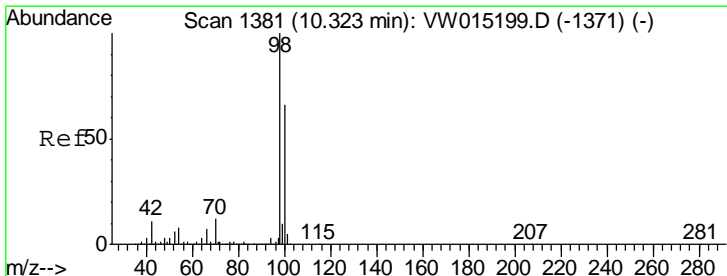
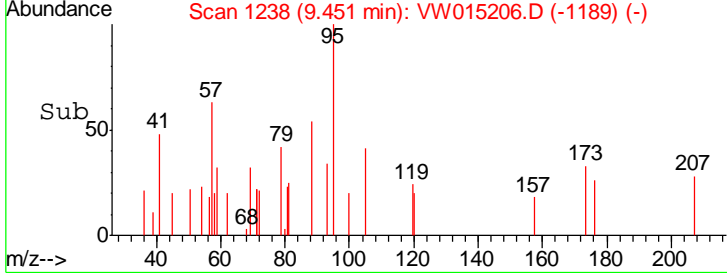
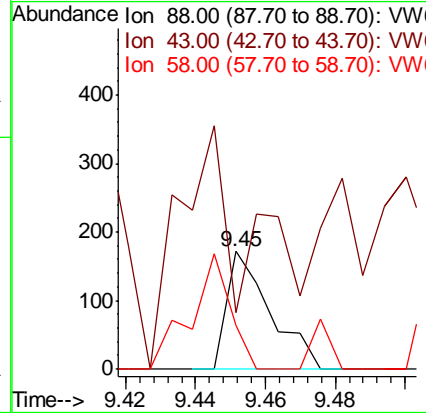
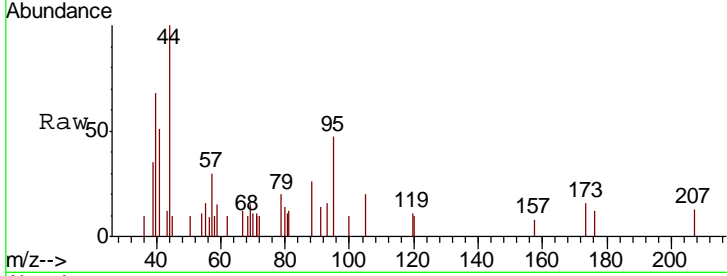




#49
 1,4-Dioxane
 Concen: 8.342 ug/l
 RT: 9.45 min Scan# 1238
 Delta R.T. 0.00 min
 Lab File: VW015206.D
 Acq: 15 Apr 2020 17:05

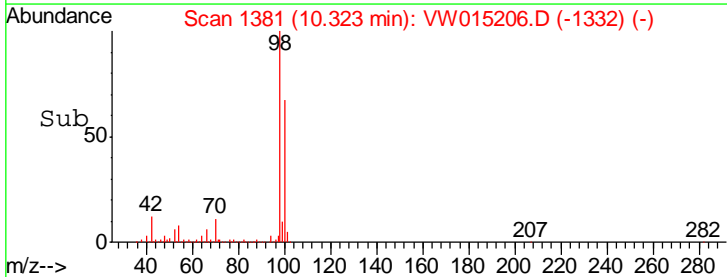
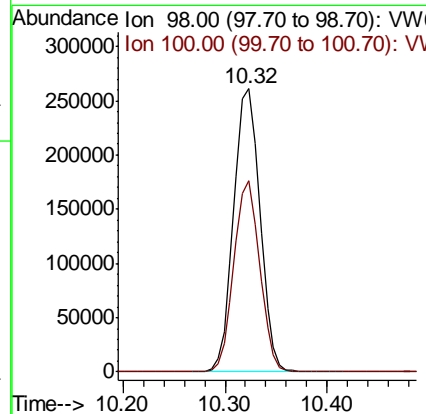
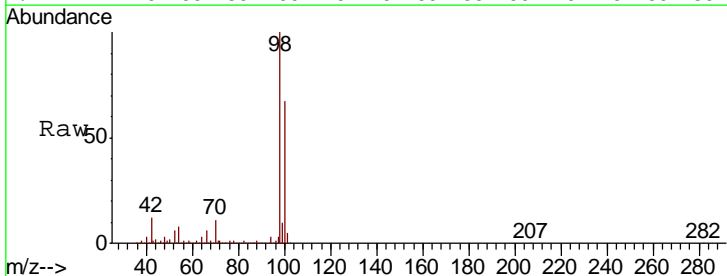
Instrument :
 MSVOA_W
 ClientSampled :

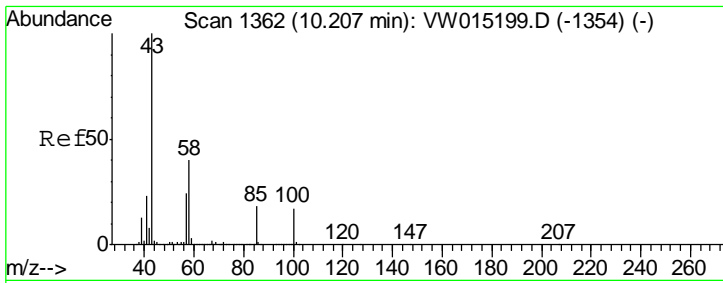
Tgt Ion	Resp	Lower	Upper
88	148		
88	100		
43	339.2	23.5	35.3#
58	89.2	55.4	83.2#



#50
 Toluene-d8
 Concen: 58.083 ug/l
 RT: 10.32 min Scan# 1381
 Delta R.T. 0.00 min
 Lab File: VW015206.D
 Acq: 15 Apr 2020 17:05

Tgt Ion	Resp	Lower	Upper
98	467805		
98	100		
100	66.0	52.9	79.3

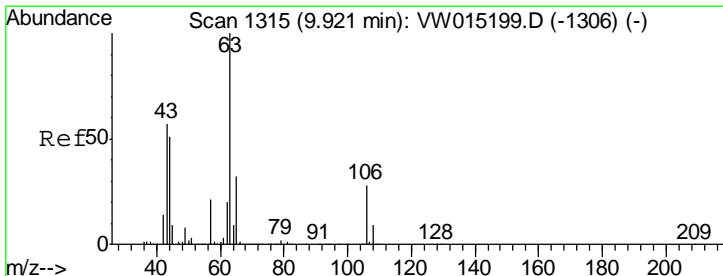
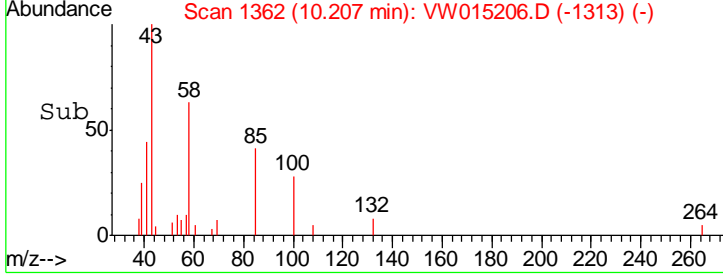
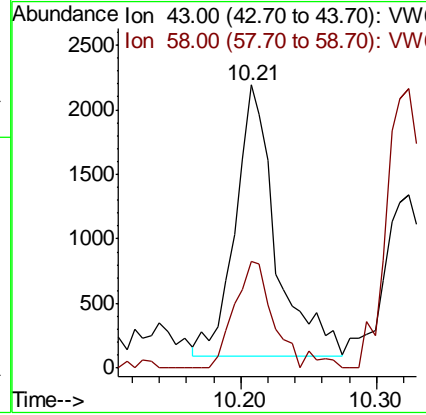
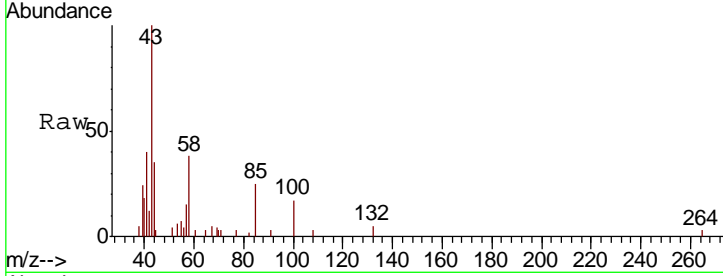




#51
 4-Methyl-2-Pentanone
 Concen: 3.172 ug/l
 RT: 10.21 min Scan# 1362
 Delta R.T. 0.00 min
 Lab File: VW015206.D
 Acq: 15 Apr 2020 17:05

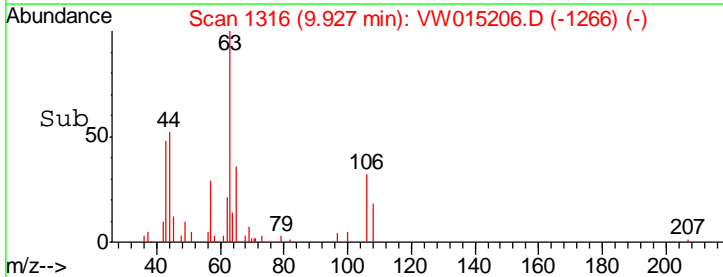
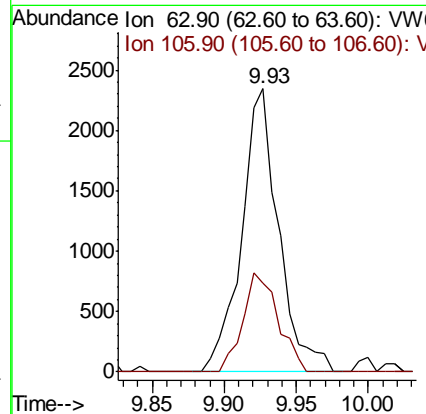
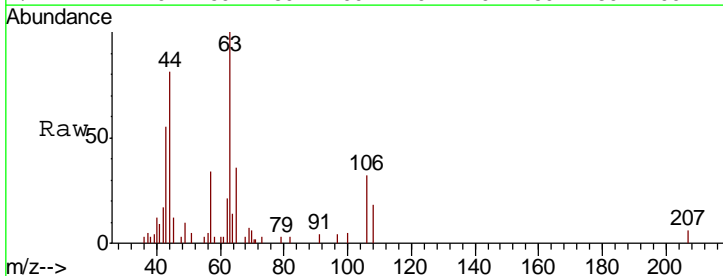
Instrument : MSVOA_W
 ClientSampled :

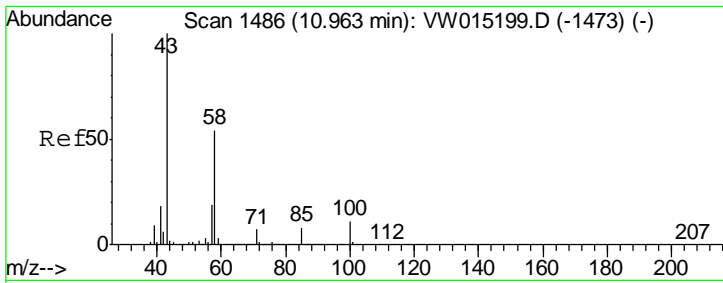
Tgt Ion	Resp	Lower	Upper
43	100		
58	36.2	32.3	48.5



#58
 2-Chloroethyl Vinyl ether
 Concen: 3.862 ug/l
 RT: 9.93 min Scan# 1316
 Delta R.T. 0.01 min
 Lab File: VW015206.D
 Acq: 15 Apr 2020 17:05

Tgt Ion	Resp	Lower	Upper
63	100		
106	33.3	22.6	33.8

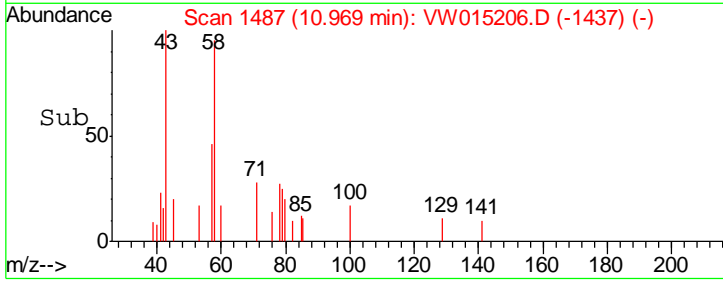
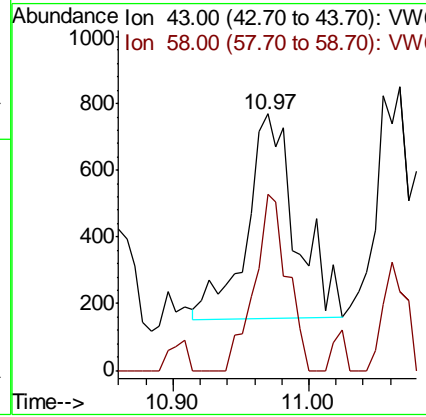
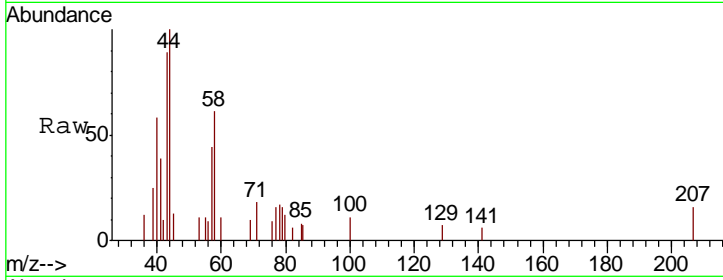




#59
 2-Hexanone
 Concen: 1.783 ug/l
 RT: 10.97 min Scan# 1487
 Delta R.T. 0.01 min
 Lab File: VW015206.D
 Acq: 15 Apr 2020 17:05

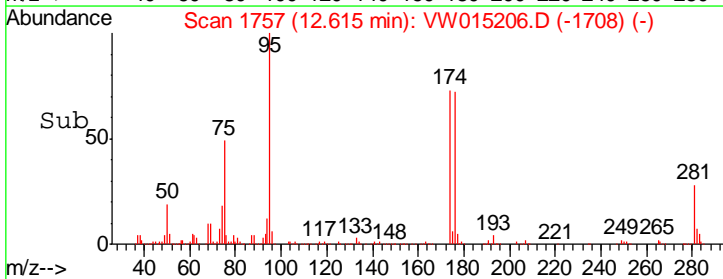
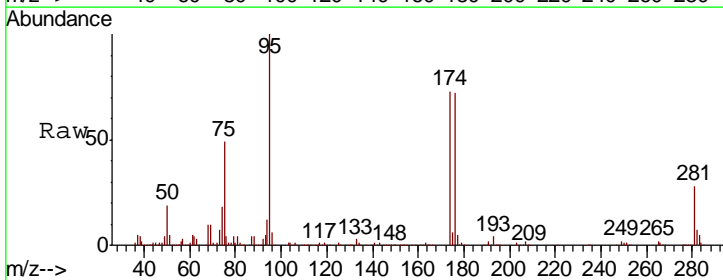
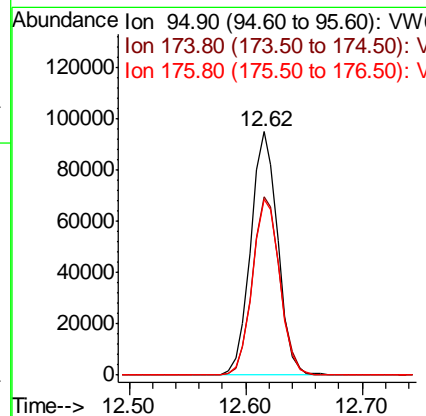
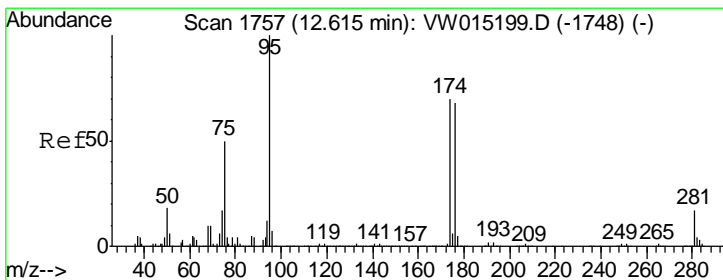
Instrument : MSVOA_W
 Client Sampled :

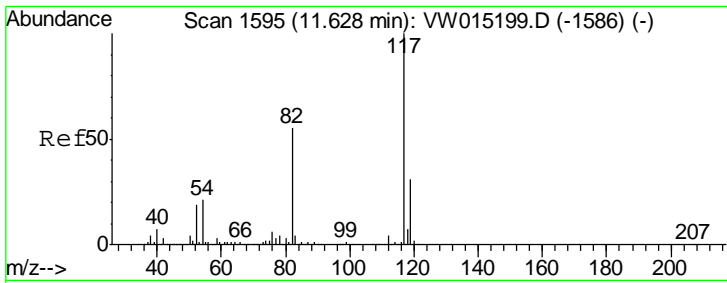
Tgt Ion	Resp	Lower	Upper
43	1542		
58	58.4	28.1	84.3



#62
 4-Bromofluorobenzene
 Concen: 54.508 ug/l
 RT: 12.62 min Scan# 1757
 Delta R.T. 0.00 min
 Lab File: VW015206.D
 Acq: 15 Apr 2020 17:05

Tgt Ion	Resp	Lower	Upper
95	153764		
174	74.2	0.0	144.4
176	73.1	0.0	140.6

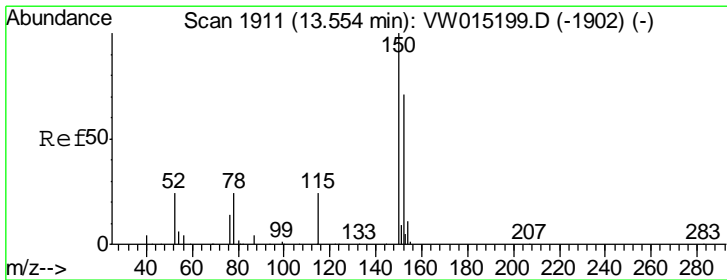
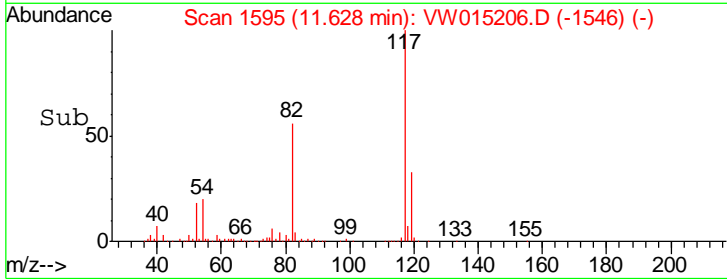
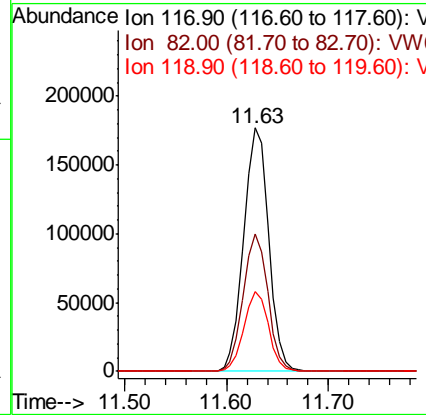
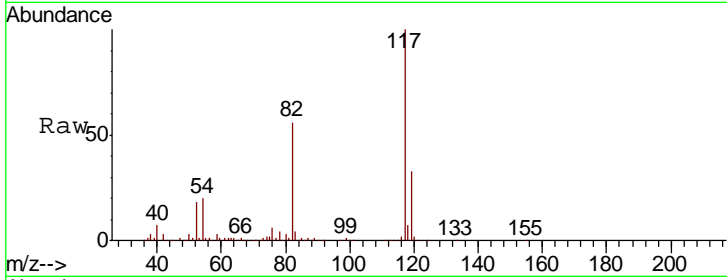




#63
 Chlorobenzene-d5
 Concen: 50.000 ug/l
 RT: 11.63 min Scan# 1595
 Delta R.T. 0.00 min
 Lab File: VW015206.D
 Acq: 15 Apr 2020 17:05

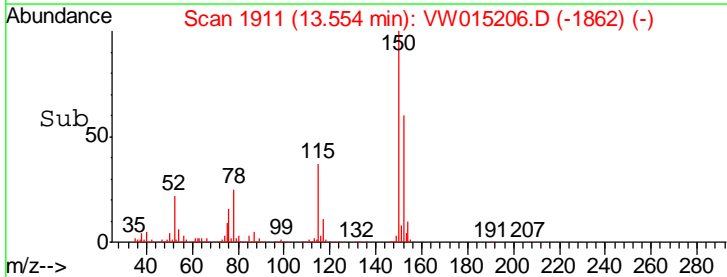
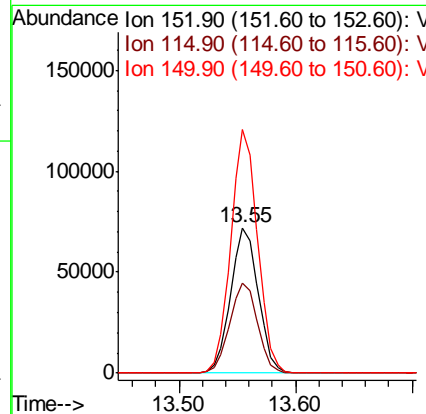
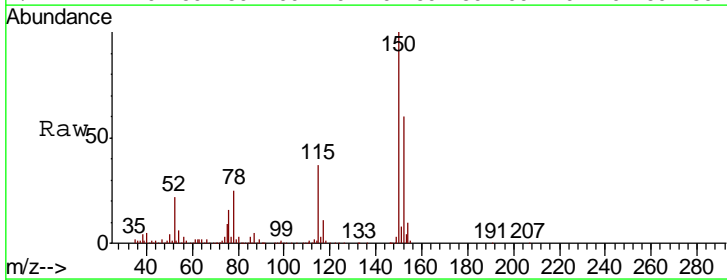
Instrument : MSVOA_W
 ClientSampled :

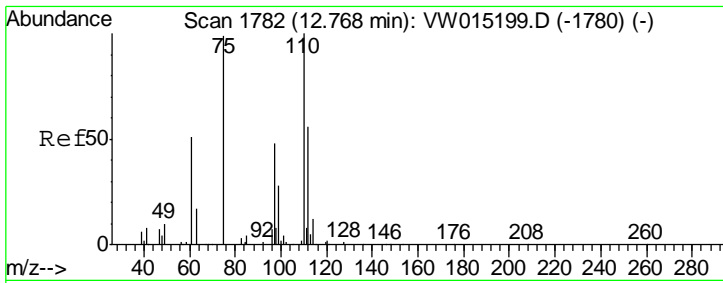
Tgt Ion	Resp	Lower	Upper
117	300452		
82	56.4	44.1	66.1
119	32.8	24.9	37.3



#72
 1,4-Dichlorobenzene-d4
 Concen: 50.000 ug/l
 RT: 13.55 min Scan# 1911
 Delta R.T. 0.00 min
 Lab File: VW015206.D
 Acq: 15 Apr 2020 17:05

Tgt Ion	Resp	Lower	Upper
152	118235		
115	62.4	31.3	93.9
150	161.9	0.0	343.4

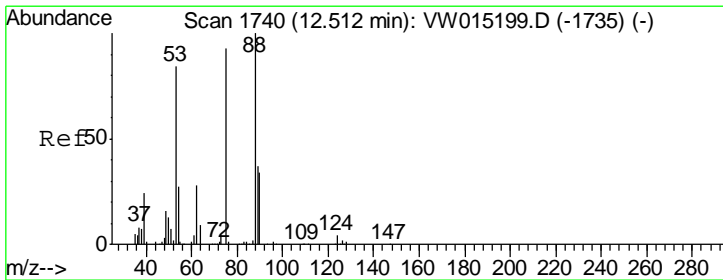
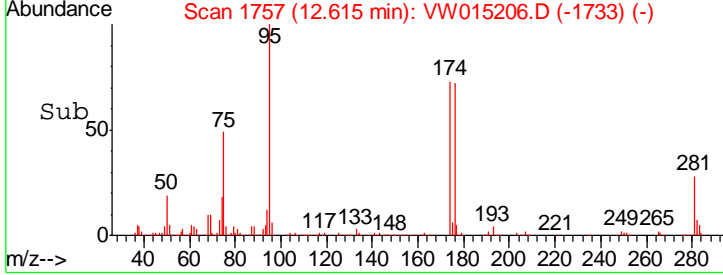
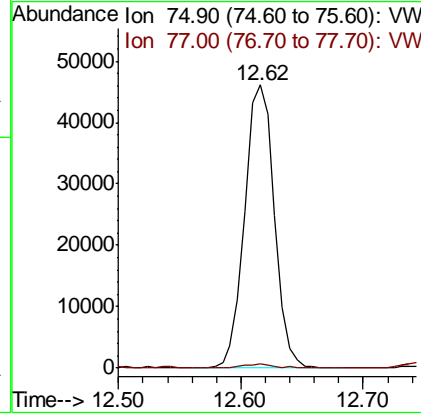
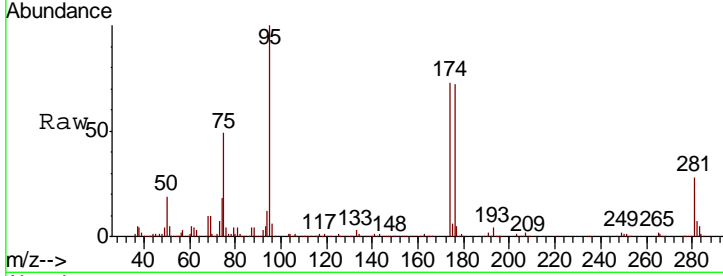




#76
 1,2,3-Trichloropropane
 Concen: 76.760 ug/l
 RT: 12.62 min Scan# 1757
 Delta R.T. -0.15 min
 Lab File: VW015206.D
 Acq: 15 Apr 2020 17:05

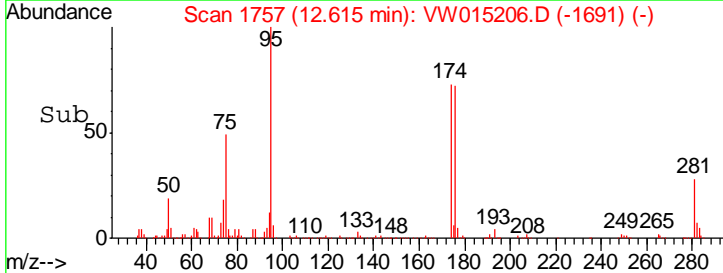
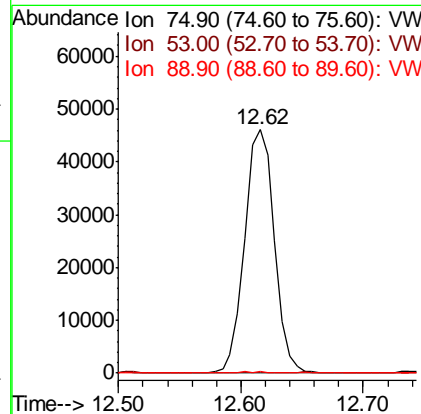
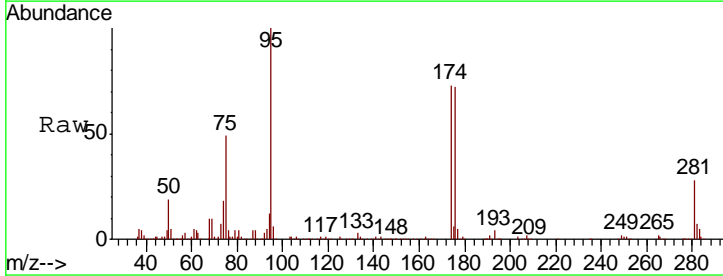
Instrument :
 MSVOA_W
 ClientSampled :

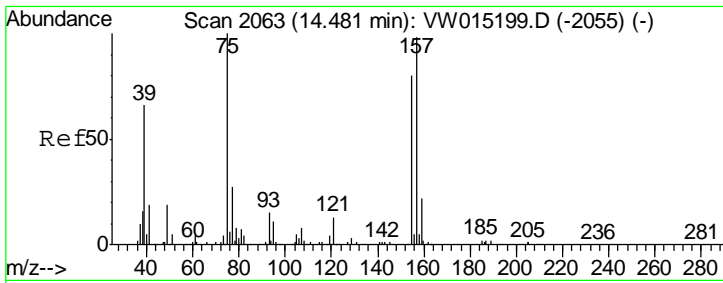
Tgt Ion	Resp	Lower	Upper
75	100		
77	1.7	0.0	0.0#



#81
 trans-1,4-Dichloro-2-butene
 Concen: 148.511 ug/l
 RT: 12.62 min Scan# 1757
 Delta R.T. 0.10 min
 Lab File: VW015206.D
 Acq: 15 Apr 2020 17:05

Tgt Ion	Resp	Lower	Upper
75	100		
53	0.2	69.4	104.2#
89	0.5	34.8	52.2#

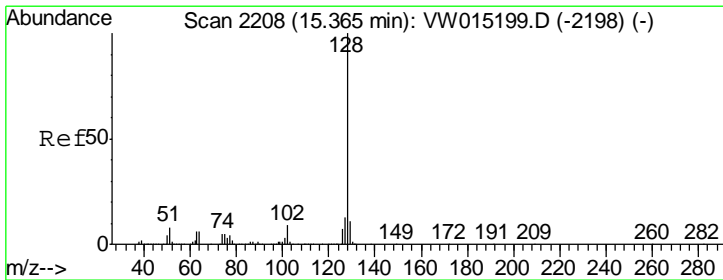
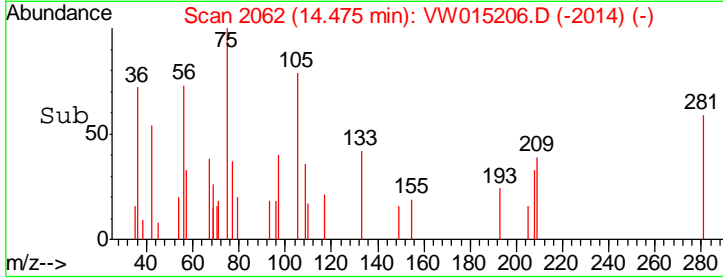
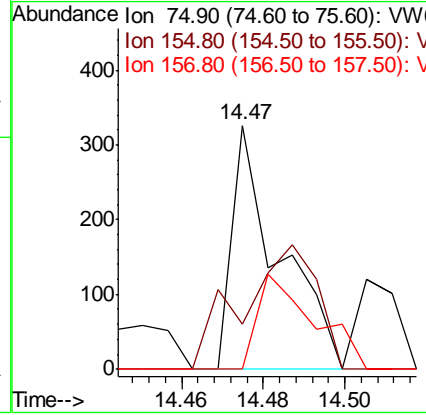
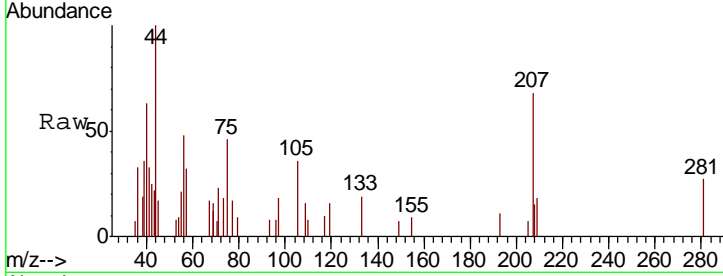




#92
 1,2-Dibromo-3-Chloropropane
 Concen: 1.091 ug/l
 RT: 14.47 min Scan# 2062
 Delta R.T. -0.01 min
 Lab File: VW015206.D
 Acq: 15 Apr 2020 17:05

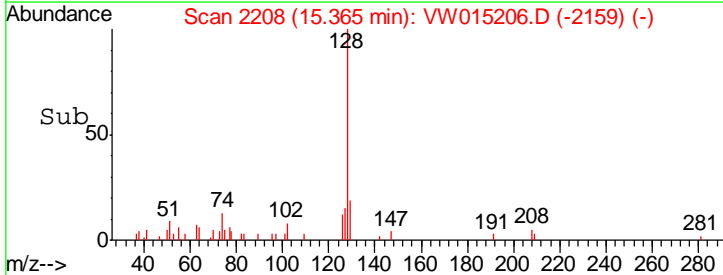
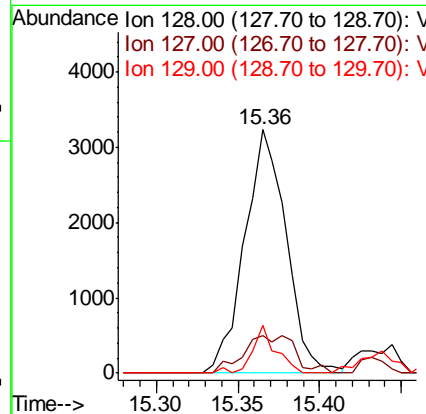
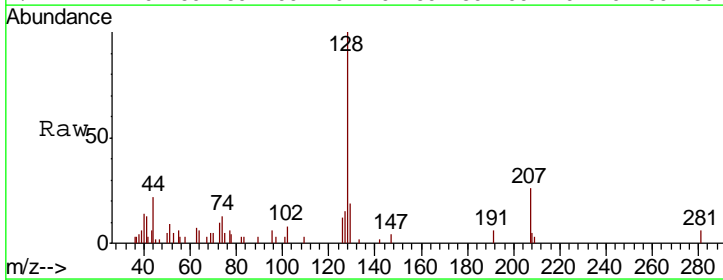
Instrument :
 MSVOA_W
 ClientSampled :

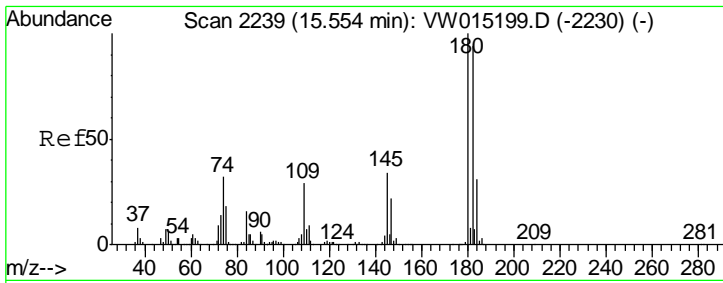
Tgt Ion	Resp	Lower	Upper
75	100		
155	82.0	41.6	124.9
157	46.7	53.8	161.2#



#95
 Naphthalene
 Concen: 1.399 ug/l
 RT: 15.36 min Scan# 2208
 Delta R.T. 0.00 min
 Lab File: VW015206.D
 Acq: 15 Apr 2020 17:05

Tgt Ion	Resp	Lower	Upper
128	100		
127	19.3	10.3	15.5#
129	10.9	8.6	12.8





#96
 1,2,3-Trichlorobenzene
 Concen: 1.176 ug/l
 RT: 15.56 min Scan# 2240
 Delta R.T. 0.01 min
 Lab File: VW015206.D
 Acq: 15 Apr 2020 17:05

Instrument :
 MSVOA_W
 ClientSampled :

Tot Ion:180 Resp: 2154

Ion	Ratio	Lower	Upper
180	100		
182	103.8	48.8	146.3
145	43.6	17.2	51.6

