

Data Path : Z:\voasrv\HPCHEM1\MSVOA_W\Data\VW041621\
 Data File : VW018674.D
 Acq On : 16 Apr 2021 16:16
 Operator : SY/VA
 Sample : M2011-14
 Misc : 5.00G/10ML/MSVOA_W/SOIL
 ALS Vial : 11 Sample Multiplier: 1

Instrument :
 MSVOA_W
 ClientSampleId :
 VHBLK001

Integration Parameters: LSCINT.P

Integrator: RTE
 Smoothing : OFF Filtering: 5
 Sampling : 1 Min Area: 0 % of largest Peak
 Start Thrs: 0.2 Max Peaks: 100
 Stop Thrs : 0 Peak Location: TOP

If leading or trailing edge < 100 prefer < Baseline drop else tangent >
 Peak separation: 5

Method : Z:\voasrv\HPCHEM1\MSVOA_W\Method\SFAMWLM041421SMA.M
 Title : SFAM01.0

Signal : TIC: VW018674.D\data.ms

peak #	R.T. min	first scan	max scan	last scan	PK TY	peak height	corr. area	corr. % max.	% of total
1	2.154	35	41	48	rBV	39806	92961	3.48%	0.521%
2	2.355	68	74	84	rVB	127773	259107	9.70%	1.452%
3	2.891	154	162	176	rVB	99273	252945	9.46%	1.417%
4	3.288	226	227	231	rVB2	1001	1126	0.04%	0.006%
5	3.343	234	236	237	rVV2	629	591	0.02%	0.003%
6	3.391	237	244	252	rVB3	4162	10214	0.38%	0.057%
7	3.525	262	266	275	rVV4	1167	3136	0.12%	0.018%
8	3.660	285	288	289	rBV3	961	839	0.03%	0.005%
9	3.678	289	291	298	rVB5	1198	1695	0.06%	0.009%
10	3.916	327	330	332	rBV2	395	428	0.02%	0.002%
11	4.019	335	347	362	rBV	198738	636660	23.82%	3.567%
12	4.379	394	406	418	rBV2	20151	65748	2.46%	0.368%
13	4.665	448	453	454	rVV2	456	639	0.02%	0.004%
14	4.915	483	494	510	rBV2	27022	106789	4.00%	0.598%
15	5.019	510	511	514	rVB3	801	465	0.02%	0.003%
16	5.117	518	527	528	rBV5	2692	5450	0.20%	0.031%
17	5.318	557	560	563	rBV	330	458	0.02%	0.003%
18	5.409	569	575	577	rBV2	984	1952	0.07%	0.011%
19	5.763	620	633	645	rVB5	2802	10257	0.38%	0.057%
20	5.940	652	662	673	rVB3	9413	29741	1.11%	0.167%
21	6.183	701	702	705	rBV2	426	463	0.02%	0.003%
22	6.921	815	823	831	rBV4	2281	6495	0.24%	0.036%
23	7.074	837	848	852	rBV	62803	156895	5.87%	0.879%
24	7.445	907	909	910	rBV	424	451	0.02%	0.003%
25	7.519	917	921	922	rBV4	517	521	0.02%	0.003%
26	7.647	931	942	953	rBV	347289	854012	31.96%	4.785%
27	7.762	957	961	964	rVB3	438	684	0.03%	0.004%
28	7.872	977	979	981	rBV3	386	490	0.02%	0.003%
29	7.939	984	990	998	rVB5	2326	6628	0.25%	0.037%
30	8.037	998	1006	1008	rBV3	814	1687	0.06%	0.009%
31	8.159	1020	1026	1031	rBV6	1734	3922	0.15%	0.022%
32	8.268	1031	1044	1061	rBV3	833490	2672516	100.00%	14.974%
33	8.470	1075	1077	1085	rVB7	1436	2556	0.10%	0.014%
34	8.622	1099	1102	1105	rBV3	623	785	0.03%	0.004%
35	8.695	1110	1114	1116	rBV5	1494	2217	0.08%	0.012%
36	8.774	1124	1127	1129	rBV2	608	751	0.03%	0.004%

Data Path : Z:\voasrv\HPCHEM1\MSVOA_W\Data\VW041621\
 Data File : VW018674.D
 Acq On : 16 Apr 2021 16:16
 Operator : SY/VA
 Sample : M2011-14
 Misc : 5.00G/10ML/MSVOA_W/SOIL
 ALS Vial : 11 Sample Multiplier: 1

Instrument :
 MSVOA_W
 ClientSampleId :
 VHBLK001

Integration Parameters: LSCINT.P

Integrator: RTE
 Smoothing : OFF Filtering: 5
 Sampling : 1 Min Area: 0 % of largest Peak
 Start Thrs: 0.2 Max Peaks: 100
 Stop Thrs : 0 Peak Location: TOP

If leading or trailing edge < 100 prefer < Baseline drop else tangent >
 Peak separation: 5

Method : Z:\voasrv\HPCHEM1\MSVOA_W\Method\SFAMWLM041421SMA.M
 Title : SFAM01.0

37	8.842	1129	1138	1150	rBV	666028	1355446	50.72%	7.594%
38	9.085	1173	1178	1182	rVV6	1407	2808	0.11%	0.016%
39	9.274	1198	1209	1223	rBV	469772	969102	36.26%	5.430%
40	9.463	1235	1240	1241	rBV4	2555	3618	0.14%	0.020%
41	9.658	1266	1272	1275	rBV5	756	1497	0.06%	0.008%
42	9.762	1281	1289	1300	rVB	26597	54746	2.05%	0.307%
43	9.890	1300	1310	1318	rBV	64821	142195	5.32%	0.797%
44	9.957	1318	1321	1326	rVV4	3274	6223	0.23%	0.035%
45	10.036	1327	1334	1342	rVB	255594	458537	17.16%	2.569%
46	10.250	1357	1369	1374	rBV	31193	67861	2.54%	0.380%
47	10.323	1374	1381	1388	rVV	1021169	1770062	66.23%	9.917%
48	10.390	1388	1392	1401	rVB	15840	30339	1.14%	0.170%
49	10.463	1401	1404	1406	rBV3	862	1281	0.05%	0.007%
50	10.506	1408	1411	1415	rVB5	1455	1996	0.07%	0.011%
51	10.579	1416	1423	1432	rBV	165230	286357	10.71%	1.604%
52	10.701	1435	1443	1450	rBV	286701	521012	19.50%	2.919%
53	10.768	1450	1454	1462	rVB3	7961	14310	0.54%	0.080%
54	10.847	1462	1467	1473	rVB	10623	17714	0.66%	0.099%
55	10.920	1473	1479	1494	rBV	233195	404945	15.15%	2.269%
56	11.061	1495	1502	1510	rBV	56960	99306	3.72%	0.556%
57	11.176	1515	1521	1527	rVB	18697	31964	1.20%	0.179%
58	11.341	1544	1548	1553	rVB6	3001	4409	0.16%	0.025%
59	11.439	1553	1564	1571	rVB	195753	329688	12.34%	1.847%
60	11.500	1571	1574	1575	rBV2	836	654	0.02%	0.004%
61	11.628	1587	1595	1604	rBV	957733	1642641	61.46%	9.203%
62	11.841	1624	1630	1633	rBV3	4240	8527	0.32%	0.048%
63	12.067	1665	1667	1675	rVB6	1102	1985	0.07%	0.011%
64	12.170	1678	1684	1691	rVV8	4174	9308	0.35%	0.052%
65	12.463	1725	1732	1738	rBV4	4753	10354	0.39%	0.058%
66	12.609	1748	1756	1762	rBV	119861	214386	8.02%	1.201%
67	12.695	1762	1770	1777	rVV	376537	642943	24.06%	3.602%
68	12.755	1777	1780	1789	rVB5	7079	15237	0.57%	0.085%
69	12.816	1789	1790	1791	rBV	836	505	0.02%	0.003%
70	12.932	1803	1809	1812	rBV	36630	61458	2.30%	0.344%
71	12.969	1812	1815	1820	rVV	33743	50622	1.89%	0.284%
72	13.036	1822	1826	1829	rVV3	7098	11624	0.43%	0.065%
73	13.079	1829	1833	1837	rVB3	6154	9119	0.34%	0.051%
74	13.194	1844	1852	1855	rBV2	9834	17662	0.66%	0.099%
75	13.249	1858	1861	1864	rVB2	3136	4063	0.15%	0.023%
76	13.292	1864	1868	1877	rVB2	35451	56082	2.10%	0.314%

Data Path : Z:\voasrv\HPCHEM1\MSVOA_W\Data\VW041621\
 Data File : VW018674.D
 Acq On : 16 Apr 2021 16:16
 Operator : SY/VA
 Sample : M2011-14
 Misc : 5.00G/10ML/MSVOA_W/SOIL
 ALS Vial : 11 Sample Multiplier: 1

Instrument :
 MSVOA_W
 ClientSampleId :
 VHBLK001

Integration Parameters: LSCINT.P
 Integrator: RTE
 Smoothing : OFF Filtering: 5
 Sampling : 1 Min Area: 0 % of largest Peak
 Start Thrs: 0.2 Max Peaks: 100
 Stop Thrs : 0 Peak Location: TOP

If leading or trailing edge < 100 prefer < Baseline drop else tangent >
 Peak separation: 5

Method : Z:\voasrv\HPCHEM1\MSVOA_W\Method\SFAMWLM041421SMA.M
 Title : SFAM01.0

77	13.377	1877	1882	1883	rBV2	4656	6893	0.26%	0.039%
78	13.408	1883	1887	1891	rVB2	10688	16978	0.64%	0.095%
79	13.475	1893	1898	1900	rBV3	7048	13145	0.49%	0.074%
80	13.505	1900	1903	1905	rBV4	7009	8735	0.33%	0.049%
81	13.560	1905	1912	1918	rBV	975532	1593279	59.62%	8.927%
82	13.761	1939	1945	1948	rBV2	17145	28502	1.07%	0.160%
83	13.792	1948	1950	1953	rVB4	6235	6590	0.25%	0.037%
84	13.853	1953	1960	1966	rBV	894311	1454952	54.44%	8.152%
85	13.950	1973	1976	1982	rVB3	9216	13437	0.50%	0.075%
86	14.017	1983	1987	1990	rVV5	4956	8068	0.30%	0.045%
87	14.066	1990	1995	2005	rVB2	32493	59824	2.24%	0.335%
88	14.194	2013	2016	2022	rVB3	2052	3522	0.13%	0.020%
89	14.298	2031	2033	2035	rBV2	1519	1346	0.05%	0.008%
90	14.499	2061	2066	2067	rBV5	2535	3409	0.13%	0.019%
91	14.627	2083	2087	2092	rVB4	5999	8882	0.33%	0.050%
92	14.725	2099	2103	2106	rVB4	5313	7003	0.26%	0.039%
93	14.889	2127	2130	2131	rBV3	1028	951	0.04%	0.005%
94	14.938	2134	2138	2140	rBV4	2022	2888	0.11%	0.016%
95	15.133	2160	2170	2174	rBV6	7126	16774	0.63%	0.094%
96	15.365	2202	2208	2212	rBV2	5565	11630	0.44%	0.065%
97	15.432	2215	2219	2224	rVB	20381	33075	1.24%	0.185%
98	15.548	2234	2238	2244	rVB5	5838	11401	0.43%	0.064%
99	15.682	2257	2260	2266	rVB7	3487	7445	0.28%	0.042%
100	15.767	2269	2274	2275	rBV4	3048	4480	0.17%	0.025%

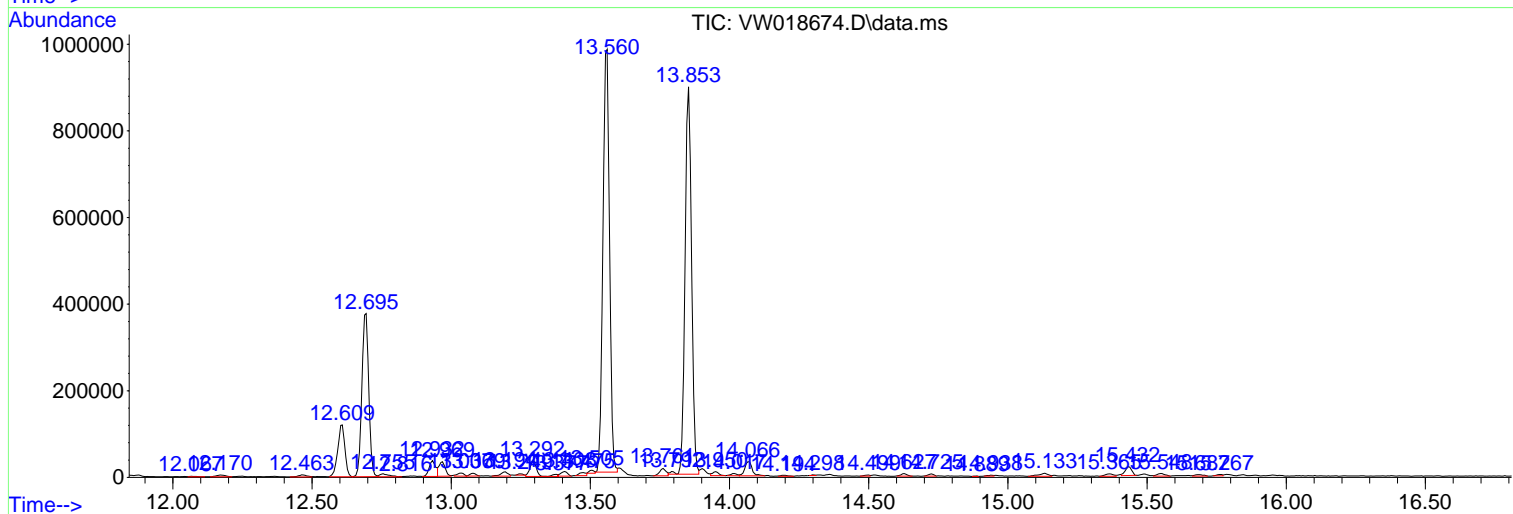
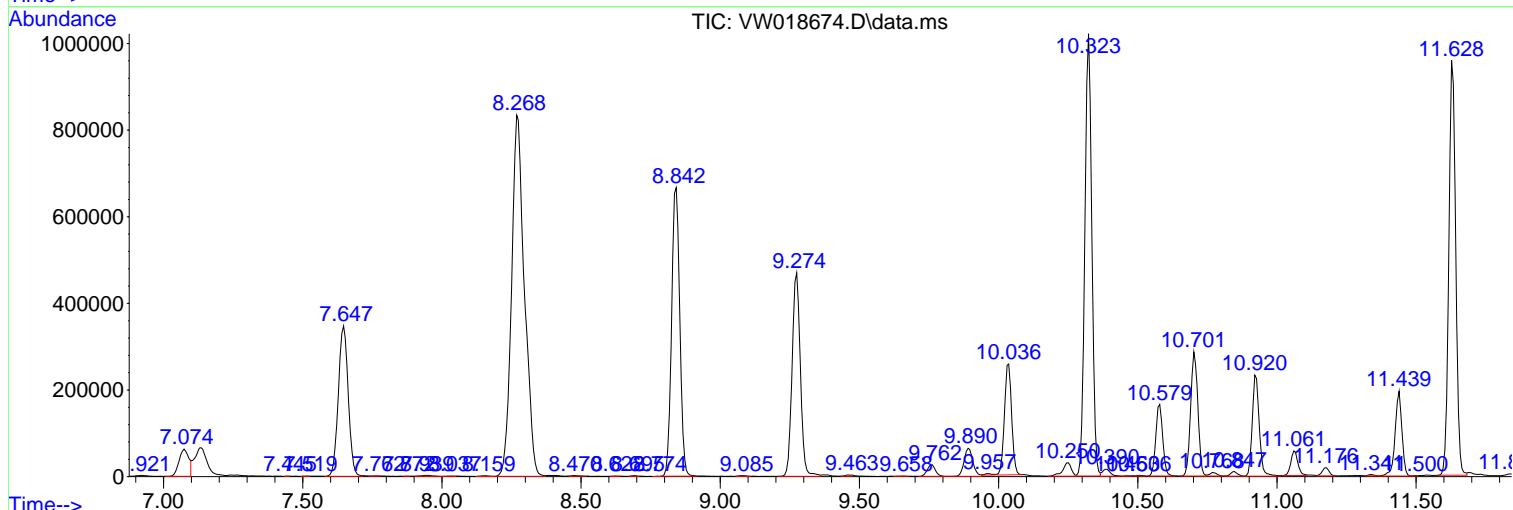
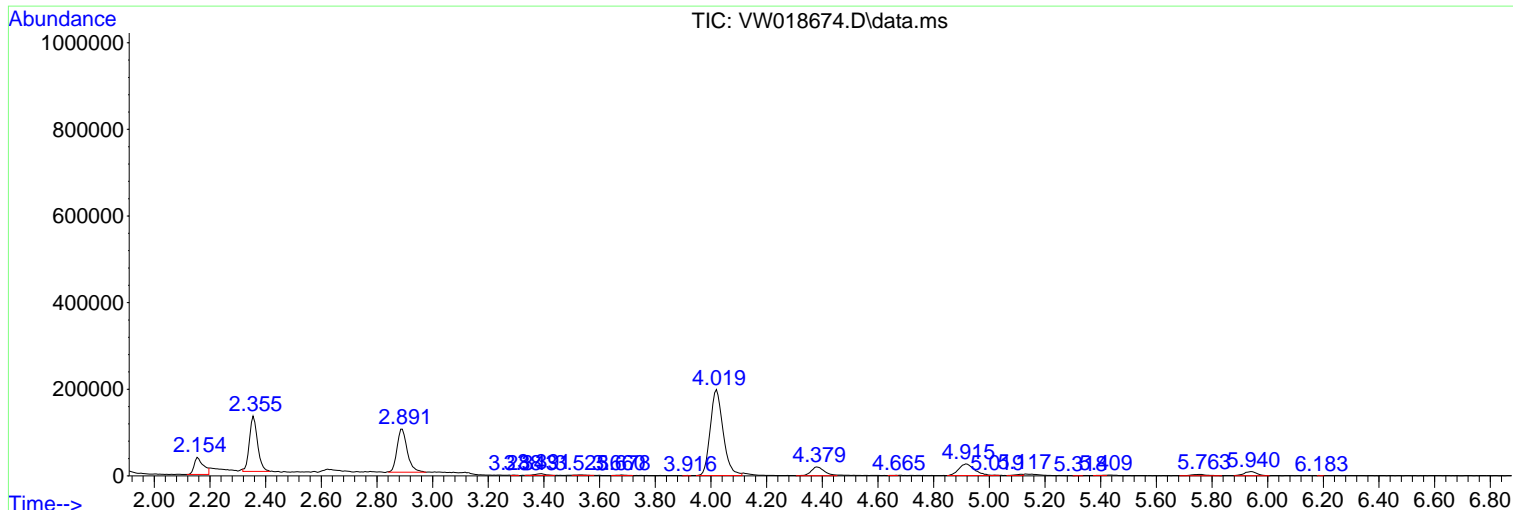
Sum of corrected areas: 17848069

Data Path : Z:\voasrv\HPCHEM1\MSVOA_W\Data\VW041621\
 Data File : VW018674.D
 Acq On : 16 Apr 2021 16:16
 Operator : SY/VA
 Sample : M2011-14
 Misc : 5.00G/10ML/MSVOA_W/SOIL
 ALS Vial : 11 Sample Multiplier: 1

Instrument :
 MSVOA_W
 ClientSampleId :
 VHBLK001

Quant Method : Z:\voasrv\HPCHEM1\MSVOA_W\Method\SFAMWLM041421SMA.M
 Quant Title : SFAM01.0

TIC Library : C:\DATABASE\NIST11.L
 TIC Integration Parameters: LSCINT.P



Data Path : Z:\voasrv\HPCHEM1\MSVOA_W\Data\VW041621\
 Data File : VW018674.D
 Acq On : 16 Apr 2021 16:16
 Operator : SY/VA
 Sample : M2011-14
 Misc : 5.00G/10ML/MSVOA_W/SOIL
 ALS Vial : 11 Sample Multiplier: 1

Instrument :
 MSVOA_W
 ClientSampleId :
 VHBLK001

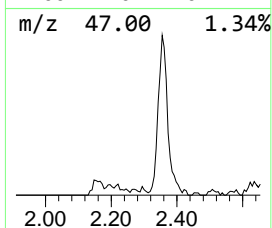
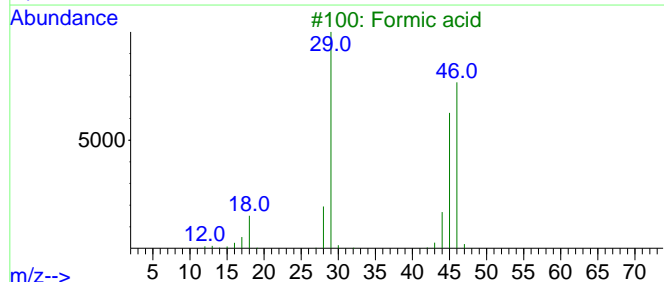
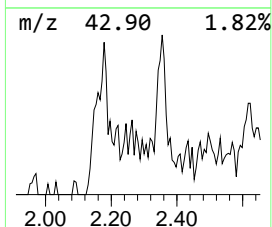
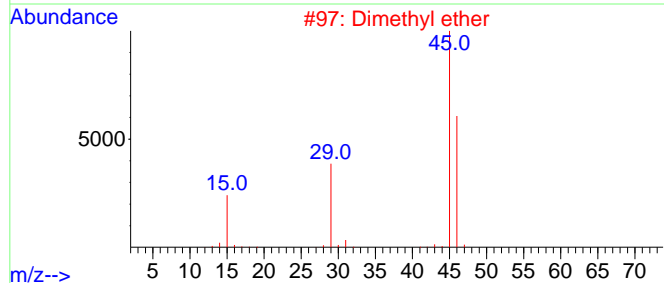
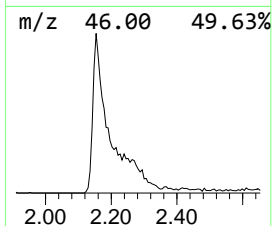
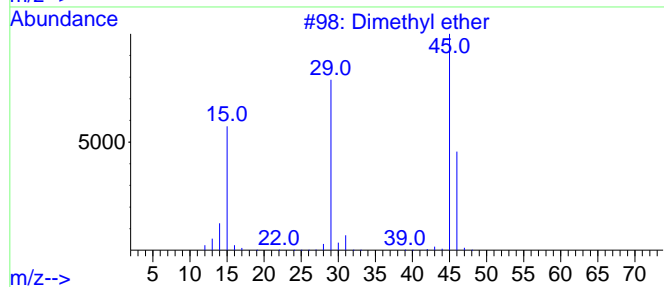
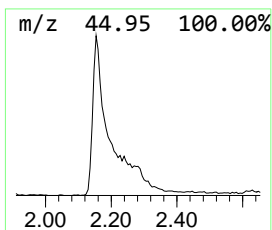
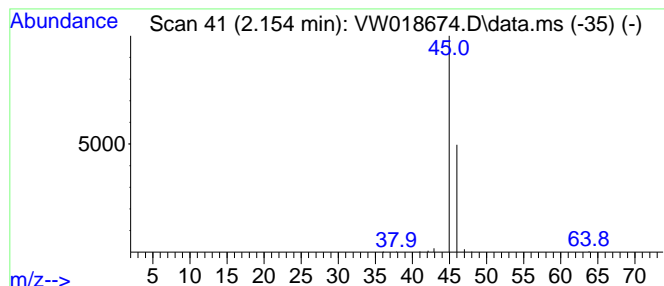
Quant Method : Z:\voasrv\HPCHEM1\MSVOA_W\Method\SFAMWLM041421SMA.M
 Quant Title : SFAM01.0

TIC Library : C:\DATABASE\NIST11.L
 TIC Integration Parameters: LSCINT.P

 Peak Number 1 Dimethyl ether Concentration Rank 6

R.T.	EstConc	Area	Relative to ISTD	R.T.
2.154	1.71 ug/L	92961	1,4-Difluorobenzene	8.842

Hit#	of	Tentative ID	MW	MolForm	CAS#	Qual
1	5	Dimethyl ether	46	C2H6O	000115-10-6	74
2		Dimethyl ether	46	C2H6O	000115-10-6	9
3		Formic acid	46	CH2O2	000064-18-6	7
4		Ethanol	46	C2H6O	000064-17-5	7
5		Ethanol	46	C2H6O	000064-17-5	7



Data Path : Z:\voasrv\HPCHEM1\MSVOA_W\Data\VW041621\
 Data File : VW018674.D
 Acq On : 16 Apr 2021 16:16
 Operator : SY/VA
 Sample : M2011-14
 Misc : 5.00G/10ML/MSVOA_W/SOIL
 ALS Vial : 11 Sample Multiplier: 1

Instrument :
 MSVOA_W
 ClientSampled :
 VHBLK001

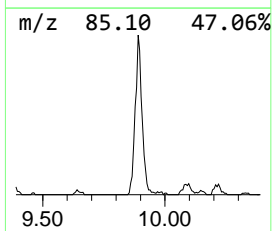
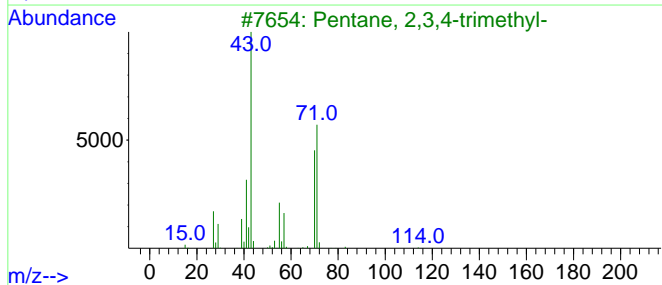
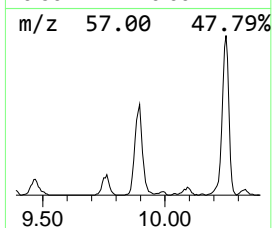
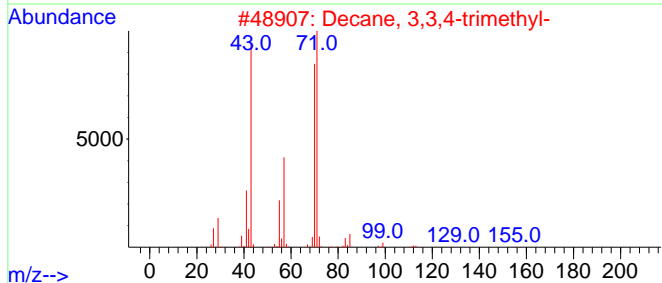
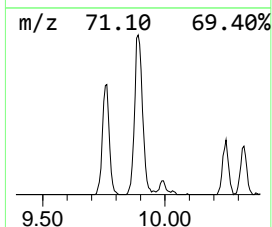
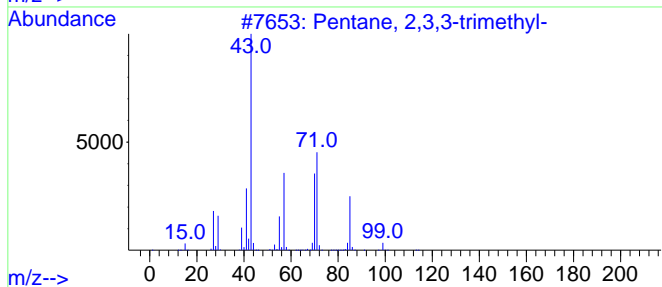
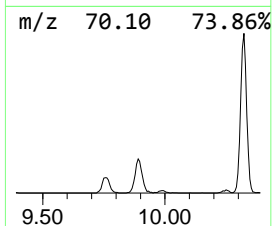
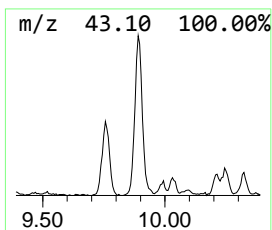
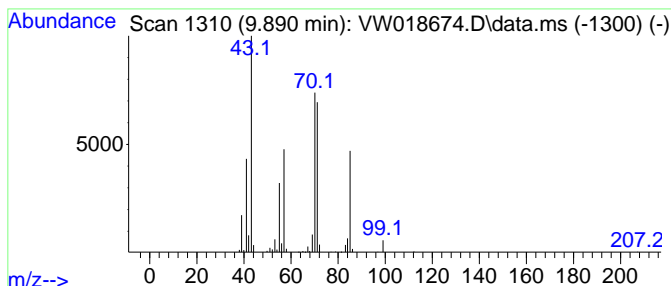
Quant Method : Z:\voasrv\HPCHEM1\MSVOA_W\Method\SFAMWLM041421SMA.M
 Quant Title : SFAM01.0

TIC Library : C:\DATABASE\NIST11.L
 TIC Integration Parameters: LSCINT.P

 Peak Number 2 (DEL) Alkane: Straight-Chai... Concentration Rank 5

R.T.	EstConc	Area	Relative to ISTD	R.T.
9.890	2.62 ug/L	142195	1,4-Difluorobenzene	8.842

Hit# of 5	Tentative ID	MW	MolForm	CAS#	Qual
1	Pentane, 2,3,3-trimethyl-	114	C8H18	000560-21-4	64
2	Decane, 3,3,4-trimethyl-	184	C13H28	049622-18-6	59
3	Pentane, 2,3,4-trimethyl-	114	C8H18	000565-75-3	53
4	Hexane, 2,3,4-trimethyl-	128	C9H20	000921-47-1	53
5	Pentane, 3-ethyl-	100	C7H16	000617-78-7	53



Data Path : Z:\voasrv\HPCHEM1\MSVOA_W\Data\VW041621\
 Data File : VW018674.D
 Acq On : 16 Apr 2021 16:16
 Operator : SY/VA
 Sample : M2011-14
 Misc : 5.00G/10ML/MSVOA_W/SOIL
 ALS Vial : 11 Sample Multiplier: 1

Instrument :
 MSVOA_W
 ClientSampleId :
 VHBLK001

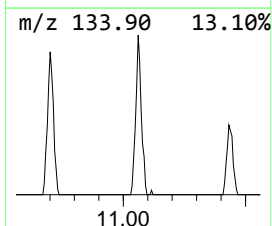
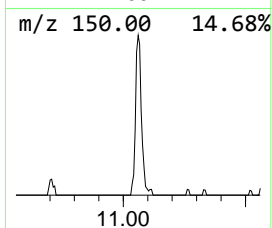
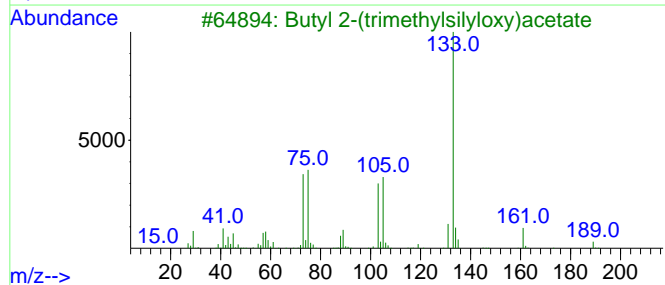
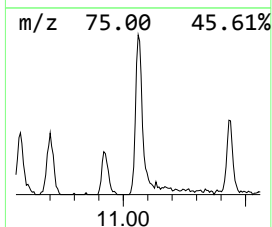
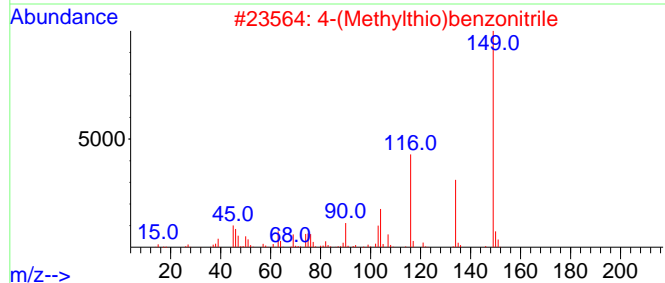
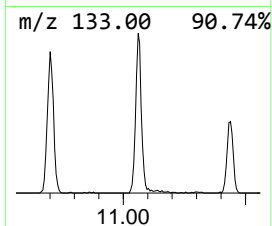
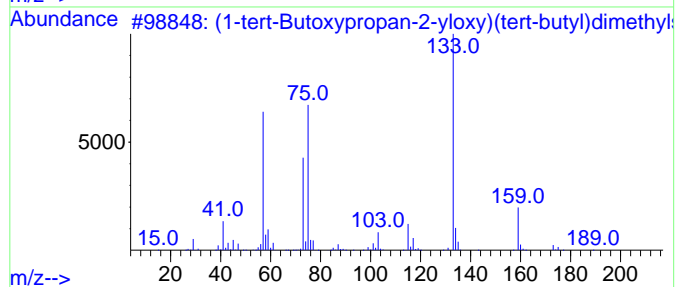
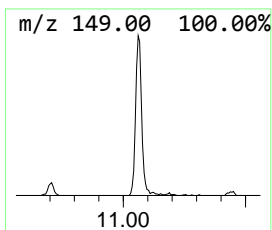
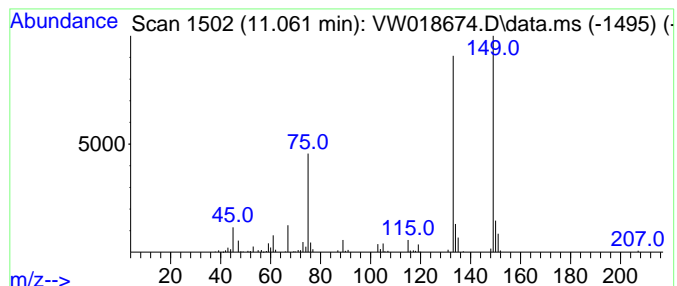
Quant Method : Z:\voasrv\HPCHEM1\MSVOA_W\Method\SFAMWLM041421SMA.M
 Quant Title : SFAM01.0

TIC Library : C:\DATABASE\NIST11.L
 TIC Integration Parameters: LSCINT.P

 Peak Number 5 unknown-01 Concentration Rank 7

R.T.	EstConc	Area	Relative to ISTD	R.T.
11.061	1.51 ug/L	99306	Chlorobenzene-d5	11.628

Hit#	of	5	Tentative ID	MW	MolForm	CAS#	Qual
1			(1-tert-Butoxypropan-2-yloxy)(te...	246	C13H30O2Si	1000367-02-9	37
2			4-(Methylthio)benzointrile	149	C8H7NS	021382-98-9	27
3			Butyl 2-(trimethylsilyloxy)acetate	204	C9H20O3Si	1000366-86-7	25
4			Benzeneacetaldehyde, 2-methoxy-....	178	C11H14O2	053155-90-1	25
5			4-Ethylbenzoic acid, ethyl ester	178	C11H14O2	036207-13-3	25



Data Path : Z:\voasrv\HPCHEM1\MSVOA_W\Data\VW041621\
Data File : VW018674.D
Acq On : 16 Apr 2021 16:16
Operator : SY/VA
Sample : M2011-14
Misc : 5.00G/10ML/MSVOA_W/SOIL
ALS Vial : 11 Sample Multiplier: 1

Instrument :
MSVOA_W
ClientSampleId :
VHBLK001

Quant Method : Z:\voasrv\HPCHEM1\MSVOA_W\Method\SFAMWLM041421SMA.M
Quant Title : SFAM01.0

TIC Library : C:\DATABASE\NIST11.L
TIC Integration Parameters: LSCINT.P

TIC Top Hit name	RT	EstConc	Units	Response	--Internal Standard--			
					#	RT	Resp	Conc
Dimethyl ether	2.154	1.7	ug/L	92961	1	8.842	1355450	25.0
(DEL) Alkane: S...	9.890	2.6	ug/L	142195	1	8.842	1355450	25.0
unknown-01	11.061	1.5	ug/L	99306	2	11.628	1642640	25.0