

Data Path : Z:\VOASRV\HPCHEM1\MSVOA W\DATA\VW042020\
 Data File : VW015247.D
 Acq On : 21 Apr 2020 01:35
 Operator : SY/VA
 Sample : L2339-01
 Misc : 4.62G/5ML/MSVOA W/SOIL
 ALS Vial : 34 Sample Multiplier: 1

Instrument :
 MSVOA_W
 ClientSampled :
 BIN-4

Quant Time: Apr 21 07:01:25 2020
 Quant Method : Z:\VOASRV\HPCHEM1\MSVOA_W\METHOD\82W042020S.M
 Quant Title : SW846 8260
 QLast Update : Tue Apr 21 06:39:58 2020
 Response via : Initial Calibration

Internal Standards	R.T.	QIon	Response	Conc	Units	Dev(Min)
1) Pentafluorobenzene	7.95	168	4733	50.00	ug/l	0.00
34) 1,4-Difluorobenzene	8.85	114	5995	50.00	ug/l	0.00
63) Chlorobenzene-d5	11.63	117	2641	50.00	ug/l	0.00
72) 1,4-Dichlorobenzene-d4	13.56	152	413	50.00	ug/l	0.00

System Monitoring Compounds

33) 1,2-Dichloroethane-d4	8.31	65	1815	46.89	ug/l	0.00
Spiked Amount	50.000		Recovery	=	93.78%	
35) Dibromofluoromethane	7.89	113	1577	47.49	ug/l	0.00
Spiked Amount	50.000		Recovery	=	94.98%	
50) Toluene-d8	10.33	98	5849	41.87	ug/l	0.00
Spiked Amount	50.000		Recovery	=	83.74%	
62) 4-Bromofluorobenzene	12.62	95	720	13.51	ug/l	0.00
Spiked Amount	50.000		Recovery	=	27.02%	

Target Compounds

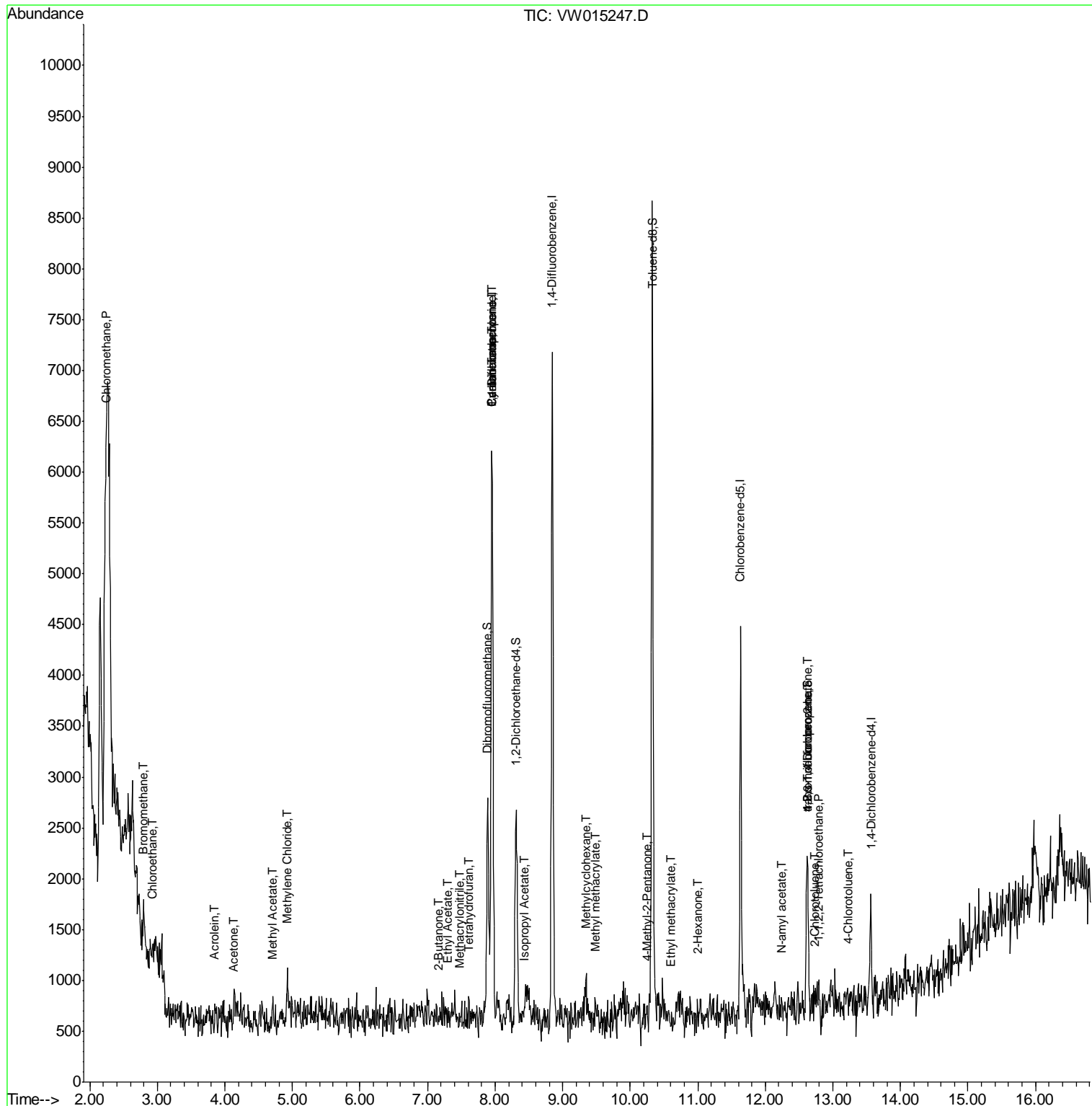
						Qvalue
3) Chloromethane	2.23	50	116	2.850	ug/l #	42
5) Bromomethane	2.80	94	151	4.419	ug/l #	74
6) Chloroethane	2.93	64	120	4.025	ug/l #	42
13) Acrolein	3.85	56	43	26.040	ug/l #	1
16) Acetone	4.13	43	154	22.781	ug/l	93
18) Methyl Acetate	4.70	43	166	9.277	ug/l #	49
20) Methylene Chloride	4.93	84	247	5.575	ug/l #	57
25) 2-Butanone	7.17	43	122	13.603	ug/l #	48
29) Tetrahydrofuran	7.62	42	22	3.937	ug/l #	32
31) Cyclohexane	7.95	56	206	2.878	ug/l #	80
36) 1,1-Dichloropropene	7.95	75	274	5.064	ug/l #	41
37) Ethyl Acetate	7.29	43	87	4.954	ug/l #	67
38) Carbon Tetrachloride	7.96	117	414	7.002	ug/l #	14
39) Methylcyclohexane	9.34	83	170	2.361	ug/l	90
41) Methacrylonitrile	7.47	41	40	3.796	ug/l #	55
43) Isopropyl Acetate	8.43	43	188	5.104	ug/l #	50
48) Methyl methacrylate	9.48	41	108	6.203	ug/l #	16
51) 4-Methyl-2-Pentanone	10.25	43	67	3.875	ug/l #	35
56) Ethyl methacrylate	10.61	69	38	1.083	ug/l #	1
59) 2-Hexanone	11.00	43	116	9.399	ug/l #	23
74) N-amyl acetate	12.24	43	103	20.676	ug/l #	19
75) 1,1,2,2-Tetrachloroethane	12.78	83	22	5.411	ug/l #	25
76) 1,2,3-Trichloropropane	12.62	75	269	84.194	ug/l #	100
79) 2-Chlorotoluene	12.73	91	20	1.064	ug/l #	41
81) trans-1,4-Dichloro-2-buten	12.62	75	269	184.049	ug/l #	15
82) 4-Chlorotoluene	13.22	91	28	1.404	ug/l #	41

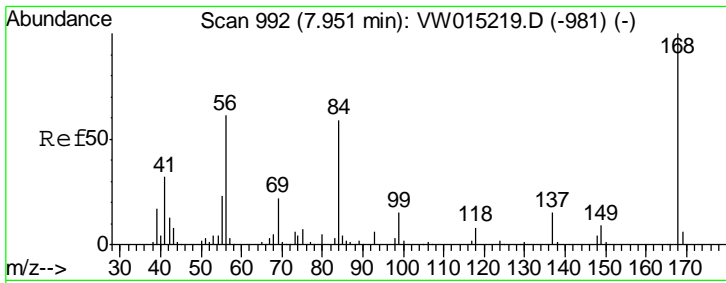
(#) = qualifier out of range (m) = manual integration (+) = signals summed

Data Path : Z:\VOASRV\HPCHEM1\MSVOA W\DATA\VW042020\
 Data File : VW015247.D
 Acq On : 21 Apr 2020 01:35
 Operator : SY/VA
 Sample : L2339-01
 Misc : 4.62G/5ML/MSVOA W/SOIL
 ALS Vial : 34 Sample Multiplier: 1

Instrument :
 MSVOA_W
 Client Sampled :
 BIN-4

Quant Time: Apr 21 07:01:25 2020
 Quant Method : Z:\VOASRV\HPCHEM1\MSVOA_W\METHOD\82W042020S.M
 Quant Title : SW846 8260
 QLast Update : Tue Apr 21 06:39:58 2020
 Response via : Initial Calibration

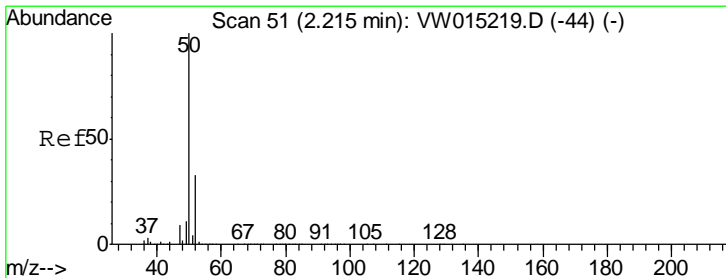
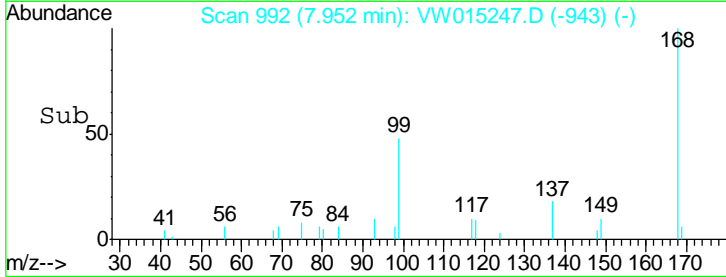
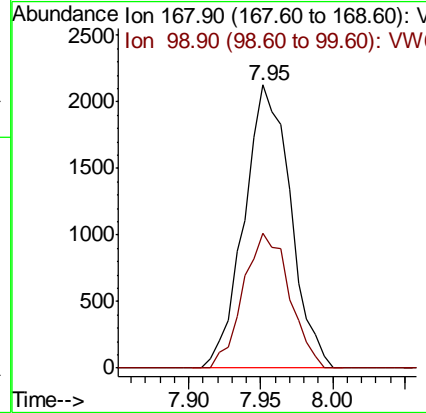
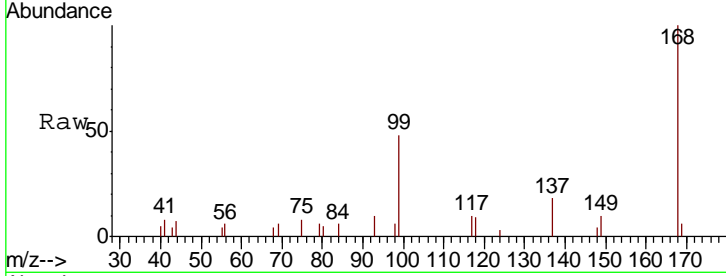




#1
 Pentafluorobenzene
 Concen: 50.000 ug/l
 RT: 7.95 min Scan# 992
 Delta R.T. 0.00 min
 Lab File: VW015247.D
 Acq: 21 Apr 2020 01:35

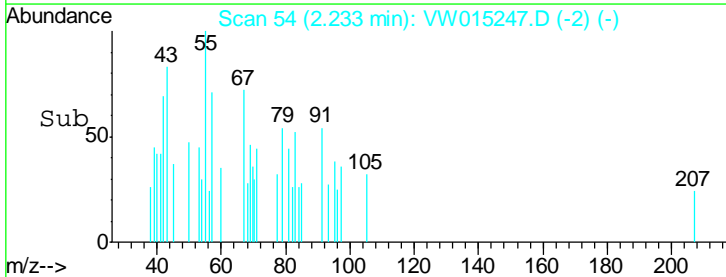
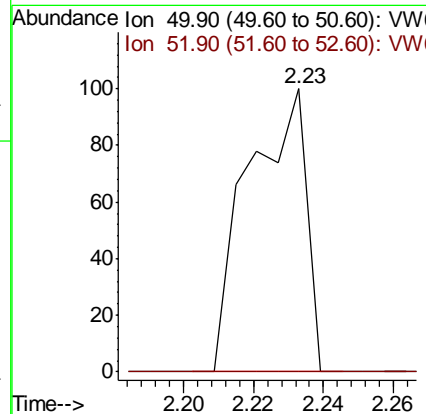
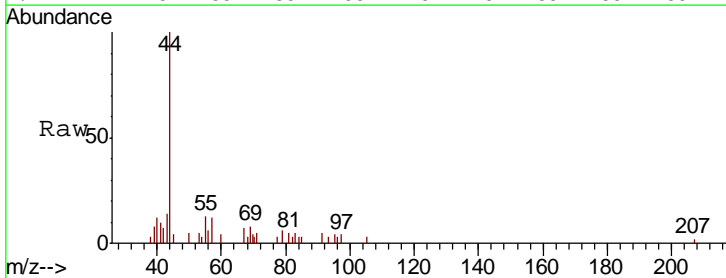
Instrument :
 MSVOA_W
 ClientSampled :
 BIN-4

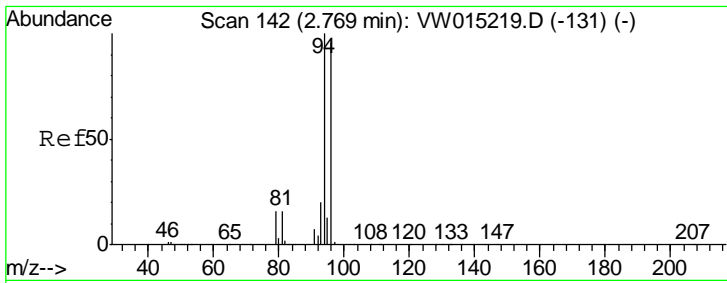
Tgt Ion: 168 Resp: 4733
 Ion Ratio Lower Upper
 168 100
 99 47.7 48.5 72.7#



#3
 Chloromethane
 Concen: 2.850 ug/l
 RT: 2.23 min Scan# 54
 Delta R.T. 0.02 min
 Lab File: VW015247.D
 Acq: 21 Apr 2020 01:35

Tgt Ion: 50 Resp: 116
 Ion Ratio Lower Upper
 50 100
 52 0.0 26.5 39.7#

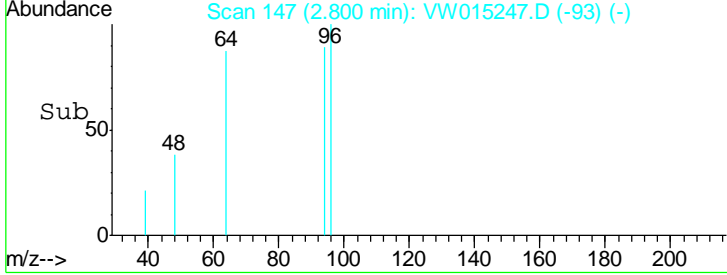
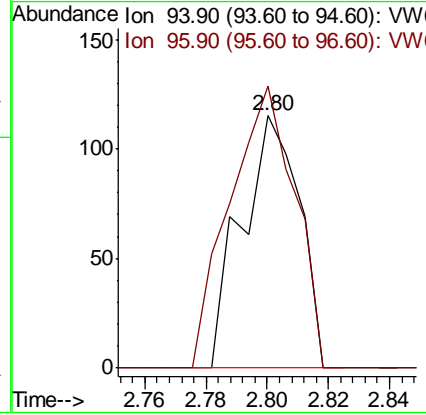
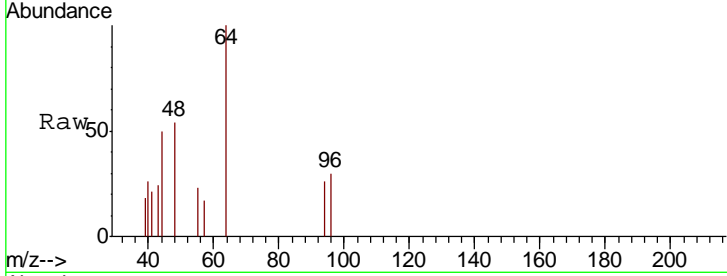




#5
 Bromomethane
 Concen: 4.419 ug/l
 RT: 2.80 min Scan# 147
 Delta R.T. 0.03 min
 Lab File: VW015247.D
 Acq: 21 Apr 2020 01:35

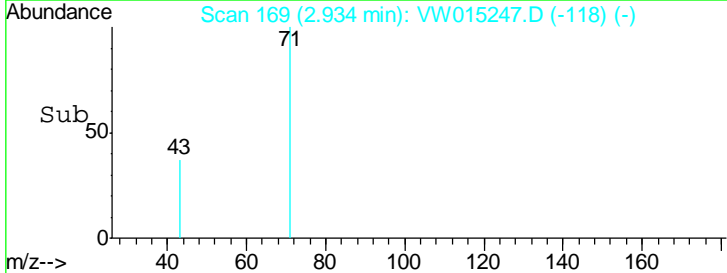
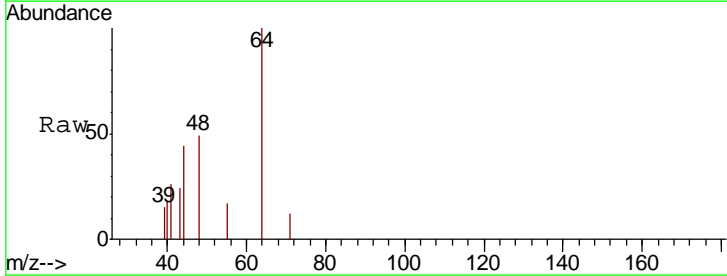
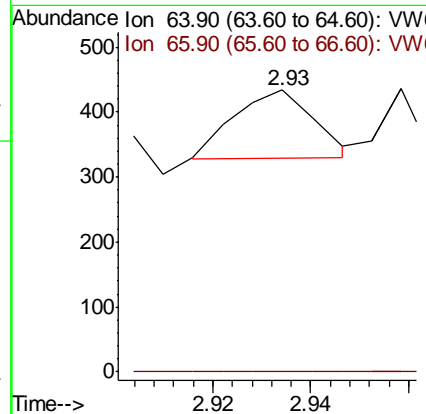
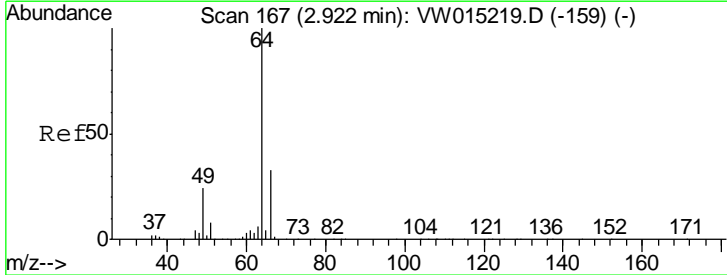
Instrument : MSVOA_W
 ClientSampled : BIN-4

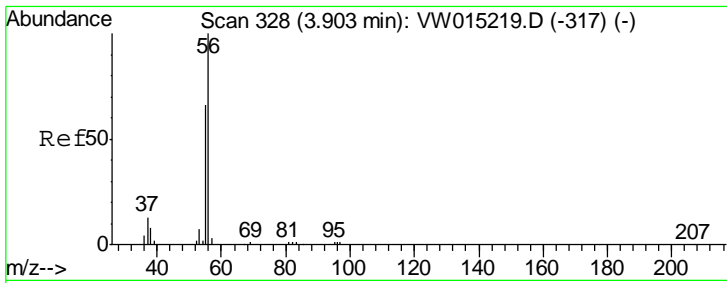
Tgt Ion: 94 Resp: 151
 Ion Ratio Lower Upper
 94 100
 96 112.2 70.4 105.6#



#6
 Chloroethane
 Concen: 4.025 ug/l
 RT: 2.93 min Scan# 169
 Delta R.T. 0.01 min
 Lab File: VW015247.D
 Acq: 21 Apr 2020 01:35

Tgt Ion: 64 Resp: 120
 Ion Ratio Lower Upper
 64 100
 66 0.0 25.8 38.6#

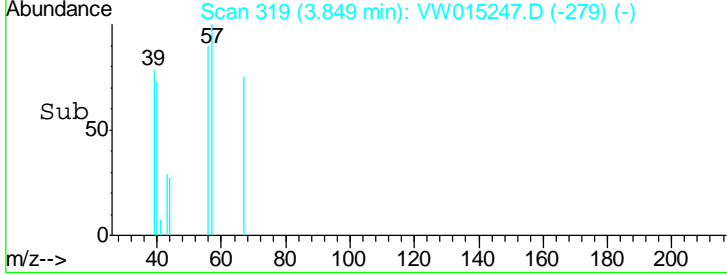
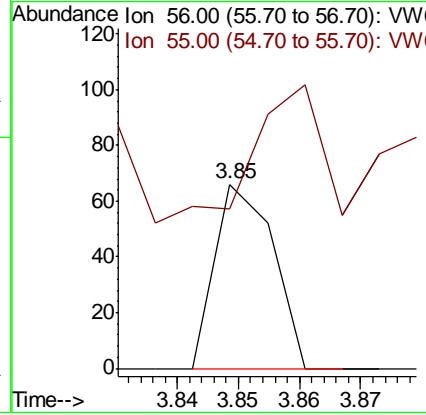
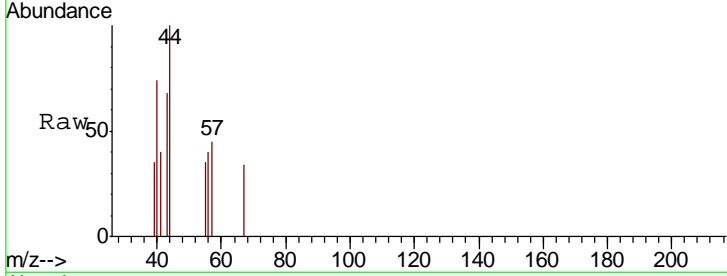




#13
 Acrolein
 Concen: 26.040 ug/l
 RT: 3.85 min Scan# 319
 Delta R.T. -0.05 min
 Lab File: VW015247.D
 Acq: 21 Apr 2020 01:35

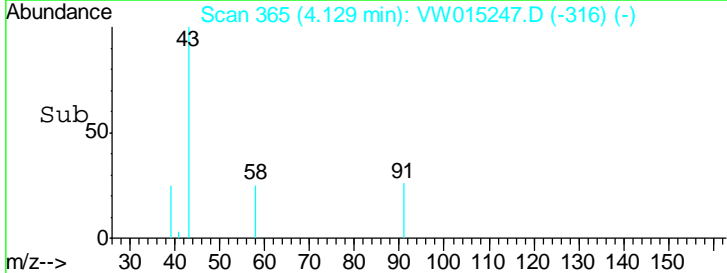
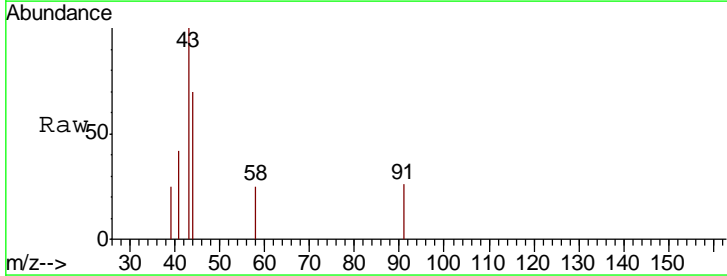
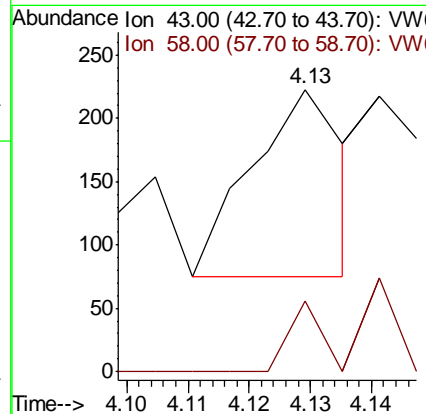
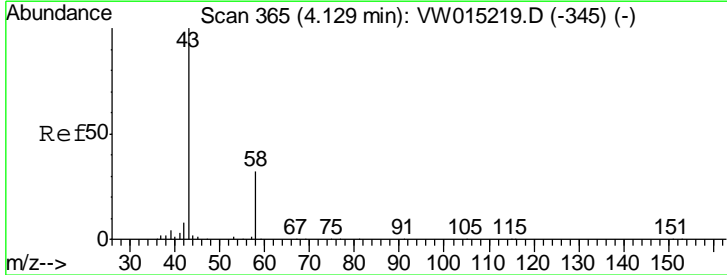
Instrument :
 MSVOA_W
ClientSampled :
 BIN-4

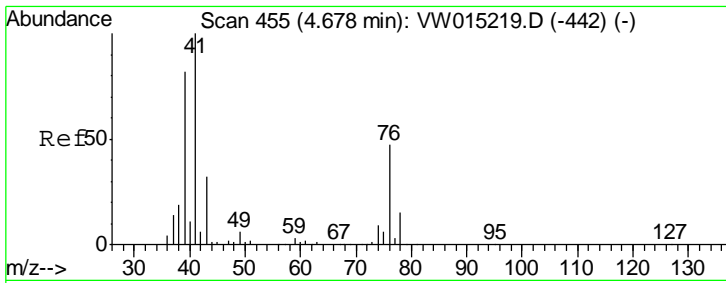
Tgt Ion	Resp	Lower	Upper
56	100		
55	346.5	56.2	84.2#



#16
 Acetone
 Concen: 22.781 ug/l
 RT: 4.13 min Scan# 365
 Delta R.T. 0.00 min
 Lab File: VW015247.D
 Acq: 21 Apr 2020 01:35

Tgt Ion	Resp	Lower	Upper
43	100		
58	37.8	27.0	40.4

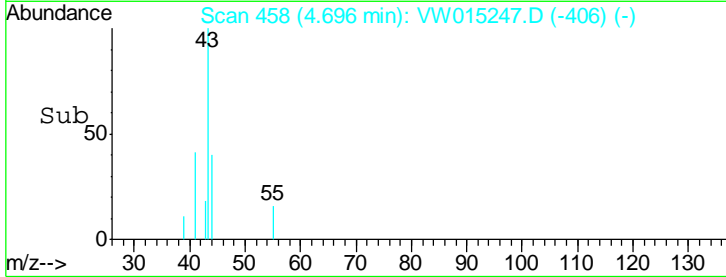
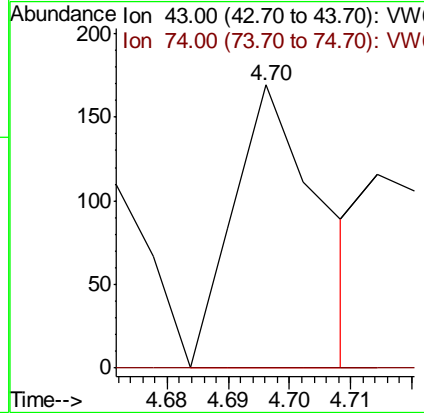
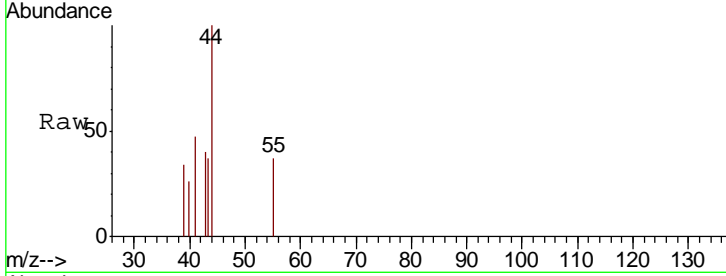




#18
Methyl Acetate
Concen: 9.277 ug/l
RT: 4.70 min Scan# 458
Delta R.T. 0.02 min
Lab File: VW015247.D
Acq: 21 Apr 2020 01:35

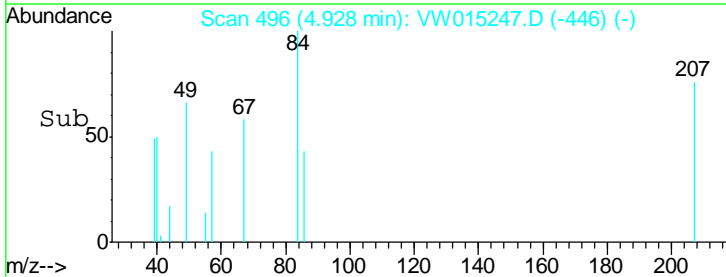
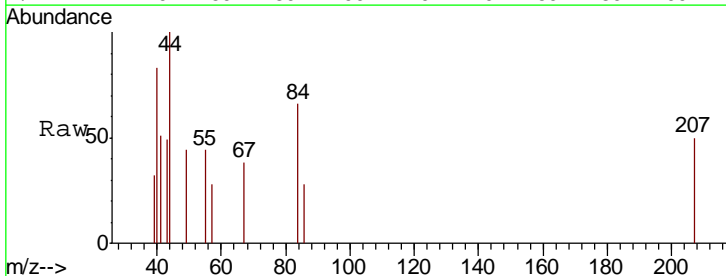
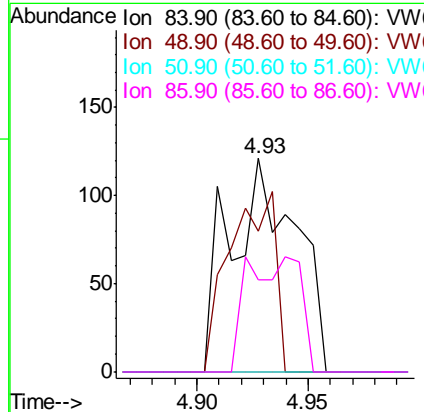
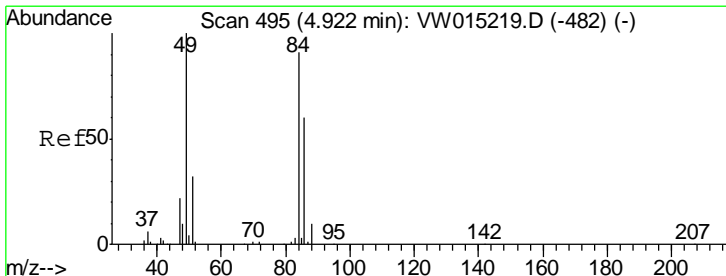
Instrument :
MSVOA_W
ClientSampled :
BIN-4

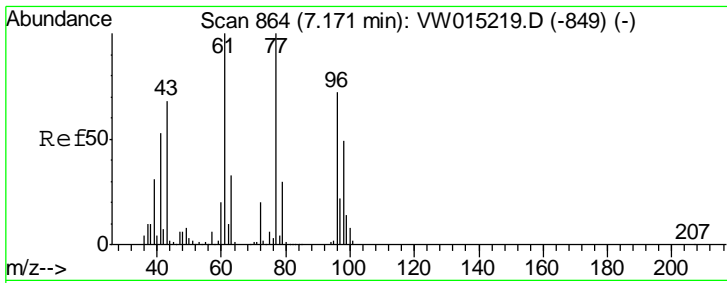
Tgt Ion	Resp	Lower	Upper
43	100		
74	0.0	20.6	31.0#



#20
Methylene Chloride
Concen: 5.575 ug/l
RT: 4.93 min Scan# 496
Delta R.T. 0.01 min
Lab File: VW015247.D
Acq: 21 Apr 2020 01:35

Tgt Ion	Resp	Lower	Upper
84	100		
49	66.1	95.4	143.0#
51	0.0	29.8	44.8#
86	43.0	47.4	71.0#

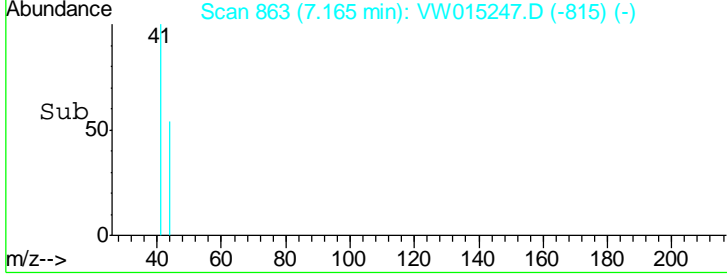
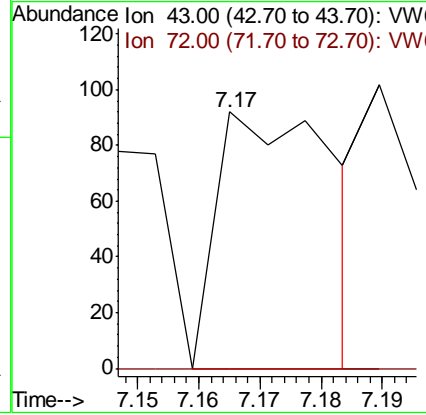
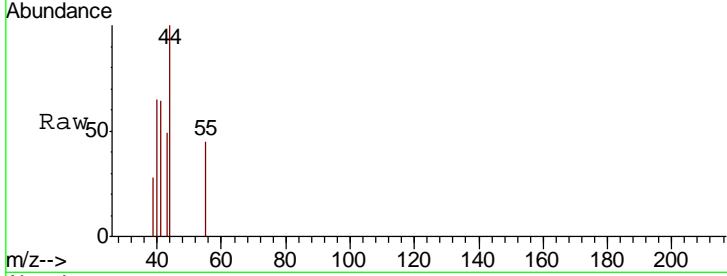




#25
 2-Butanone
 Concen: 13.603 ug/l
 RT: 7.17 min Scan# 863
 Delta R.T. -0.01 min
 Lab File: VW015247.D
 Acq: 21 Apr 2020 01:35

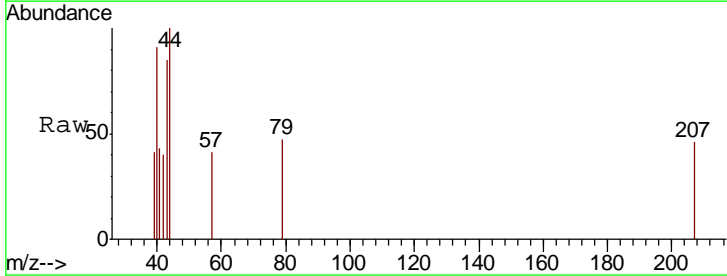
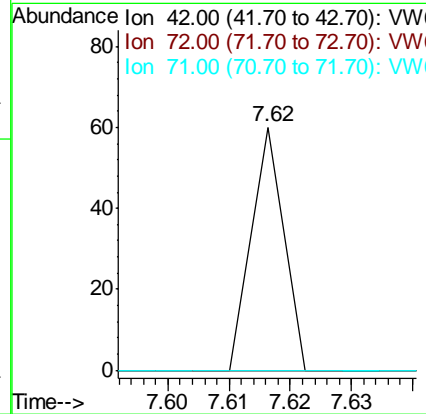
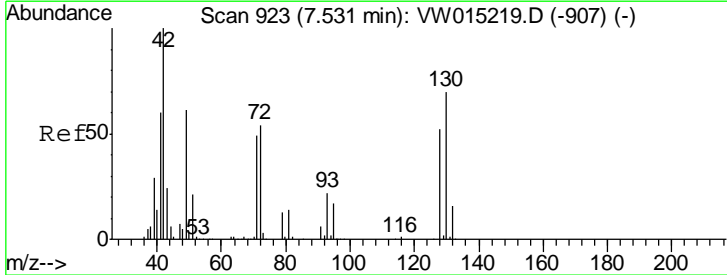
Instrument :
 MSVOA_W
 ClientSampled :
 BIN-4

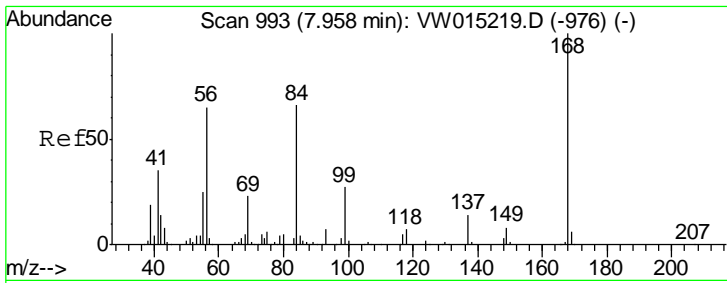
Tgt Ion	Resp	Lower	Upper
43	100		
72	0.0	21.6	32.4#



#29
 Tetrahydrofuran
 Concen: 3.937 ug/l
 RT: 7.62 min Scan# 937
 Delta R.T. 0.09 min
 Lab File: VW015247.D
 Acq: 21 Apr 2020 01:35

Tgt Ion	Resp	Lower	Upper
42	100		
72	0.0	36.2	54.2#
71	0.0	34.2	51.4#

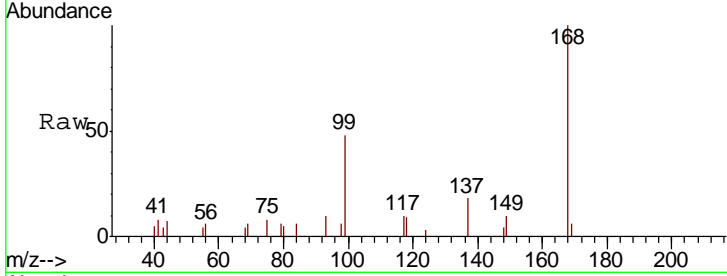




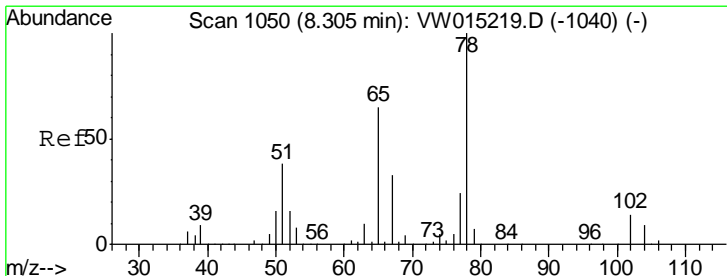
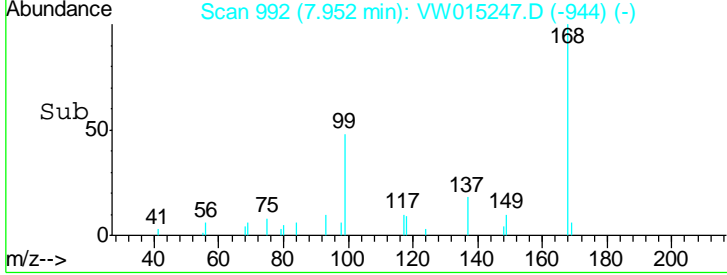
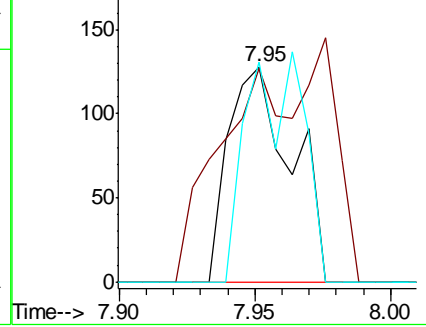
#31
 Cyclohexane
 Concen: 2.878 ug/l
 RT: 7.95 min Scan# 992
 Delta R.T. -0.01 min
 Lab File: VW015247.D
 Acq: 21 Apr 2020 01:35

Instrument :
 MSVOA_W
 ClientSampled :
 BIN-4

Tgt Ion	Resp	Lower	Upper
56	100		
69	55.5	27.1	40.7#
84	102.3	71.9	107.9

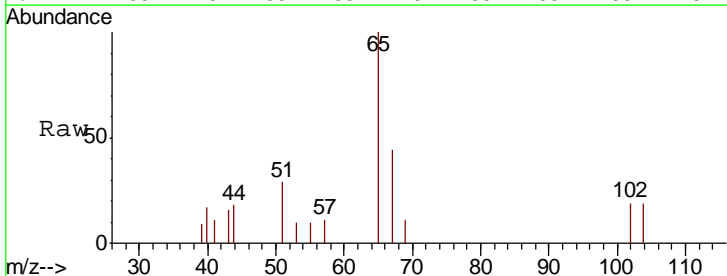


Abundance Ion 56.00 (55.70 to 56.70): VW
 Ion 69.00 (68.70 to 69.70): VW
 Ion 84.00 (83.70 to 84.70): VW

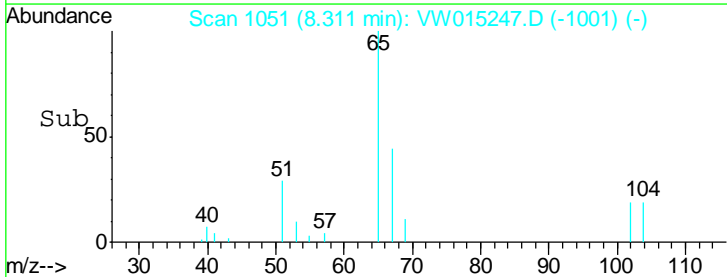
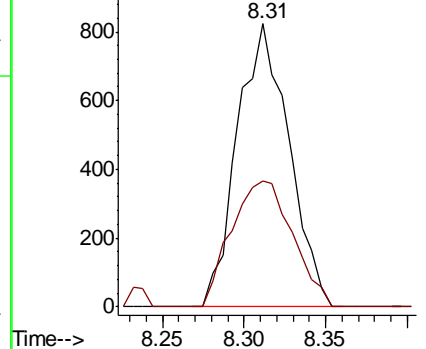


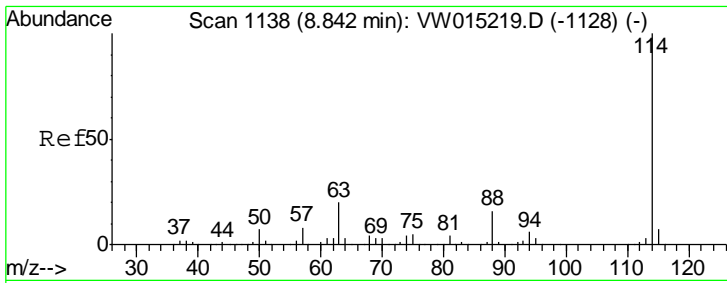
#33
 1,2-Dichloroethane-d4
 Concen: 46.894 ug/l
 RT: 8.31 min Scan# 1051
 Delta R.T. 0.01 min
 Lab File: VW015247.D
 Acq: 21 Apr 2020 01:35

Tgt Ion	Resp	Lower	Upper
65	100		
67	52.8	0.0	107.0



Abundance Ion 64.90 (64.60 to 65.60): VW
 Ion 66.90 (66.60 to 67.60): VW

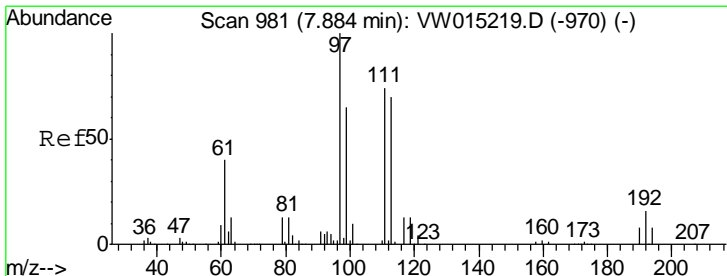
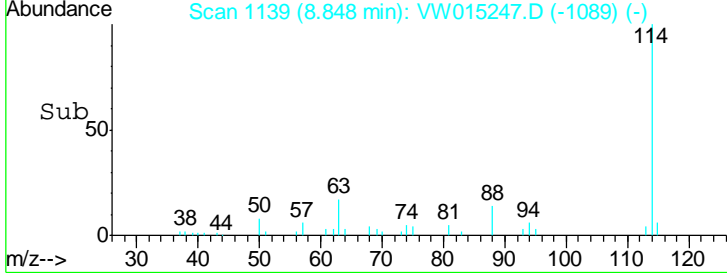
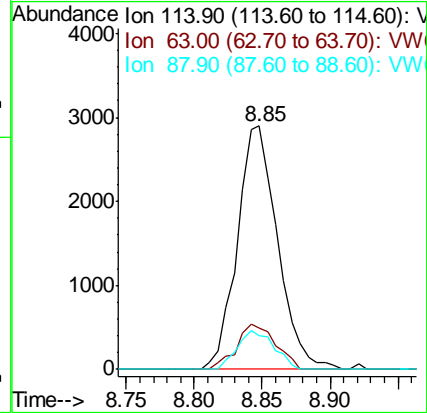
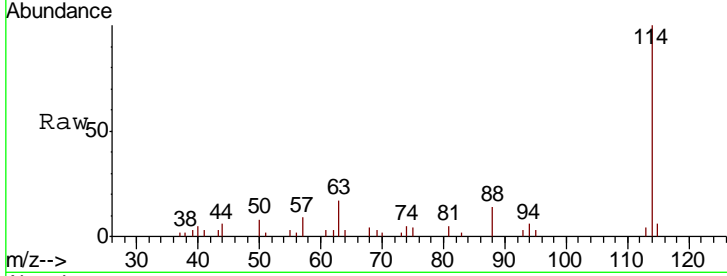




#34
 1,4-Difluorobenzene
 Concen: 50.000 ug/l
 RT: 8.85 min Scan# 1139
 Delta R.T. 0.01 min
 Lab File: VW015247.D
 Acq: 21 Apr 2020 01:35

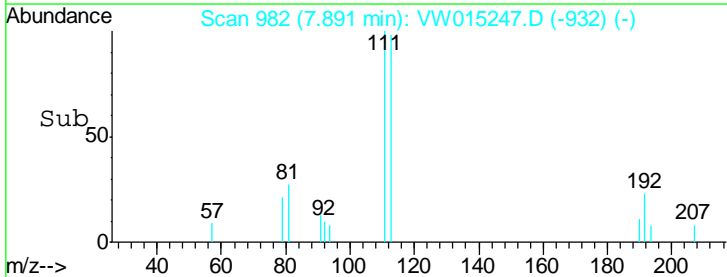
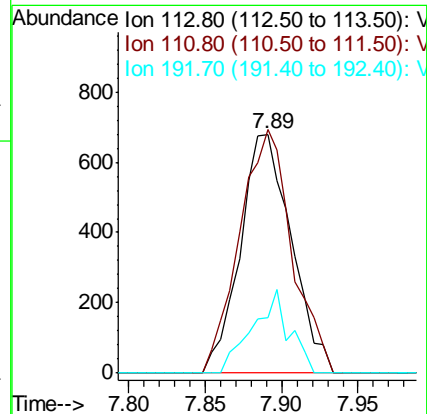
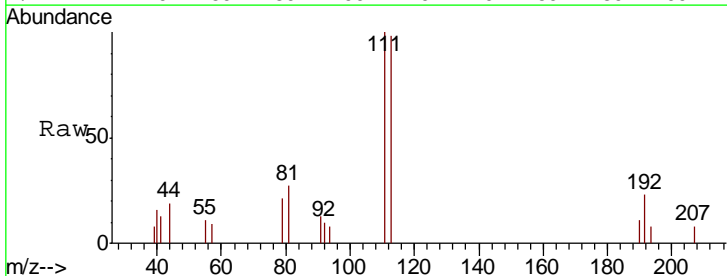
Instrument :
 MSVOA_W
 ClientSampled :
 BIN-4

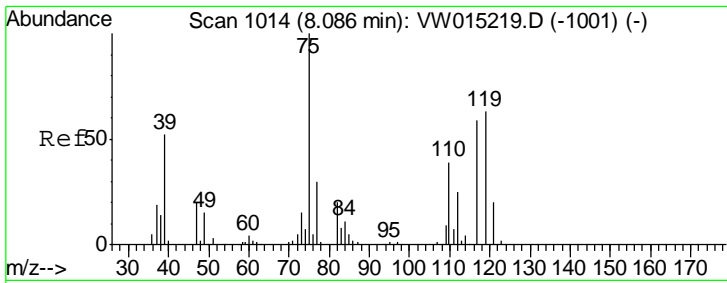
Tgt Ion	Resp	Lower	Upper
114	100		
63	17.1	0.0	39.8
88	13.6	0.0	30.2



#35
 Dibromofluoromethane
 Concen: 47.489 ug/l
 RT: 7.89 min Scan# 982
 Delta R.T. 0.01 min
 Lab File: VW015247.D
 Acq: 21 Apr 2020 01:35

Tgt Ion	Resp	Lower	Upper
113	100		
111	104.7	83.0	124.4
192	25.1	15.1	22.7#

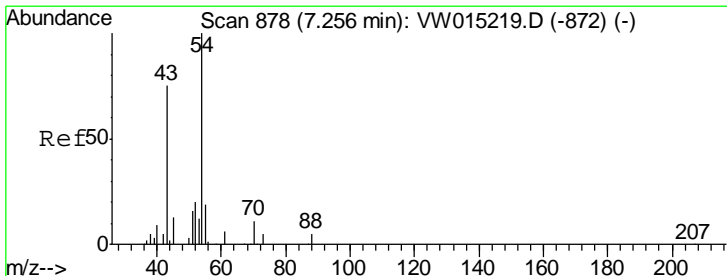
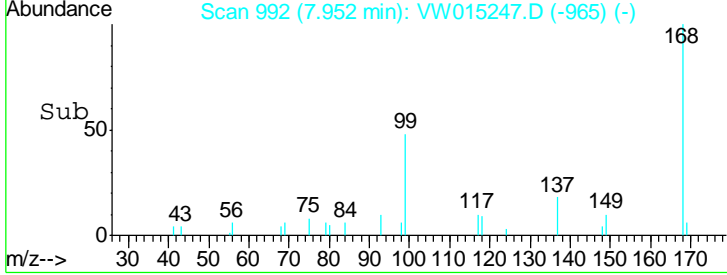
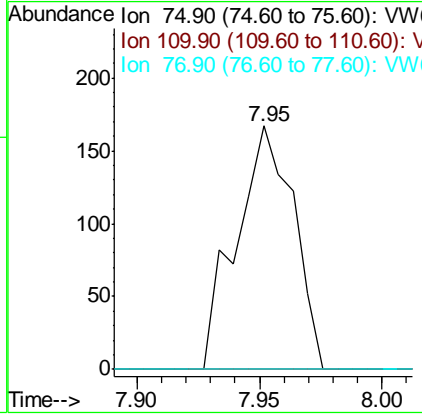
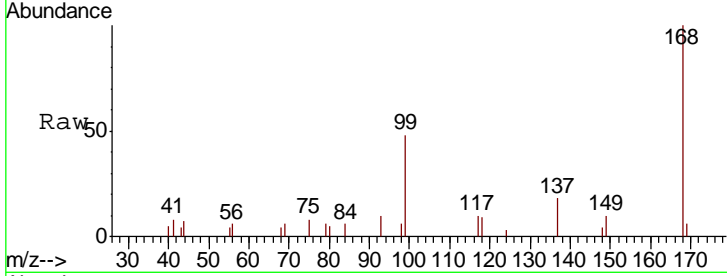




#36
 1,1-Dichloropropene
 Concen: 5.064 ug/l
 RT: 7.95 min Scan# 992
 Delta R.T. -0.13 min
 Lab File: VW015247.D
 Acq: 21 Apr 2020 01:35

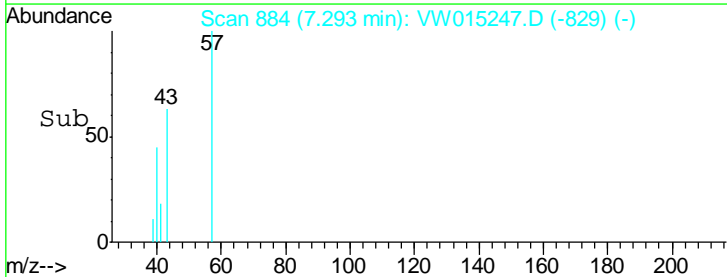
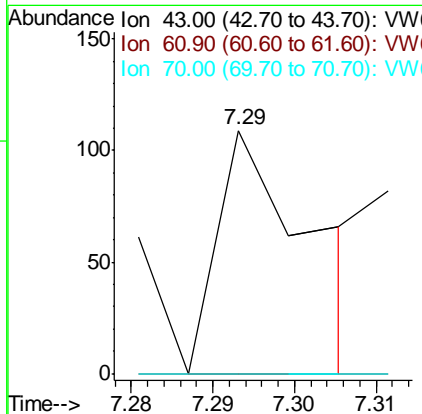
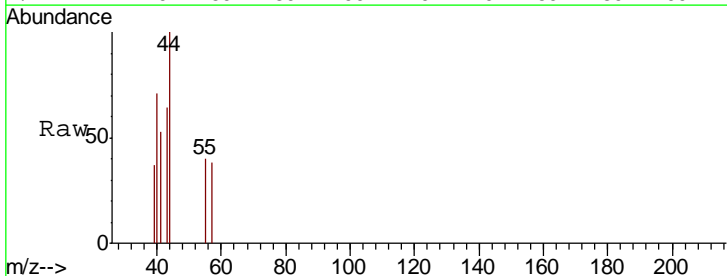
Instrument : MSVOA_W
 ClientSampled : BIN-4

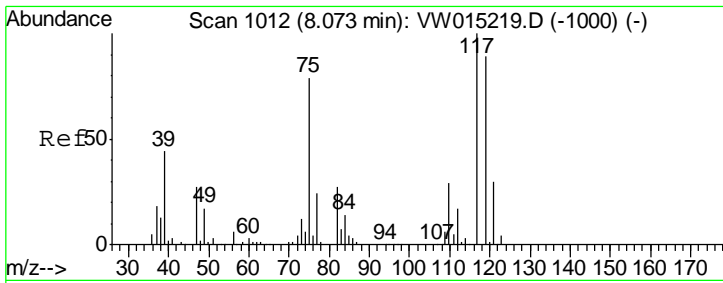
Tgt Ion	Resp	Lower	Upper
75	100		
110	0.0	18.2	54.6#
77	0.0	24.5	36.7#



#37
 Ethyl Acetate
 Concen: 4.954 ug/l
 RT: 7.29 min Scan# 884
 Delta R.T. 0.04 min
 Lab File: VW015247.D
 Acq: 21 Apr 2020 01:35

Tgt Ion	Resp	Lower	Upper
43	100		
61	0.0	11.9	17.9#
70	0.0	8.8	13.2#

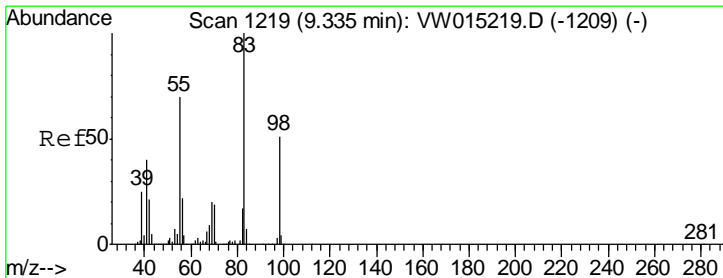
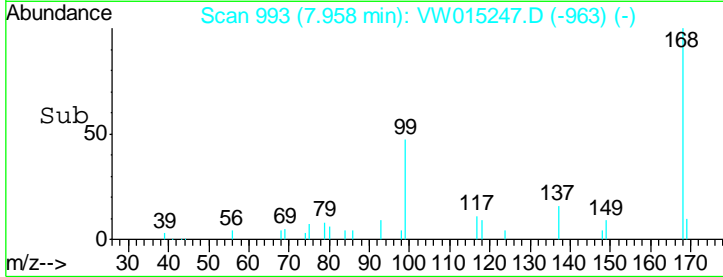
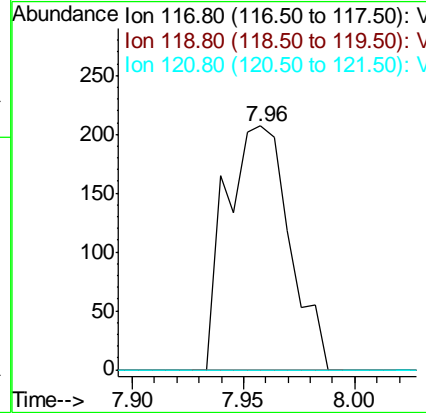
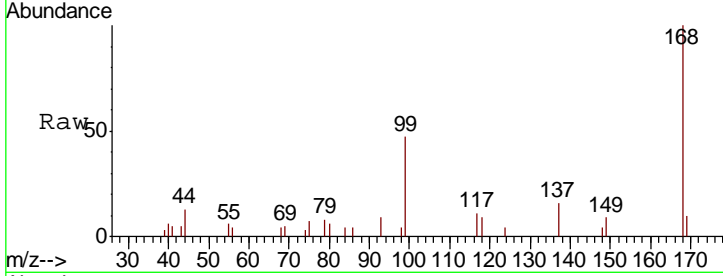




#38
 Carbon Tetrachloride
 Concen: 7.002 ug/l
 RT: 7.96 min Scan# 993
 Delta R.T. -0.12 min
 Lab File: VW015247.D
 Acq: 21 Apr 2020 01:35

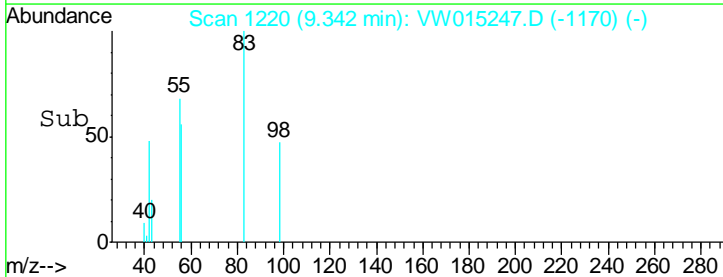
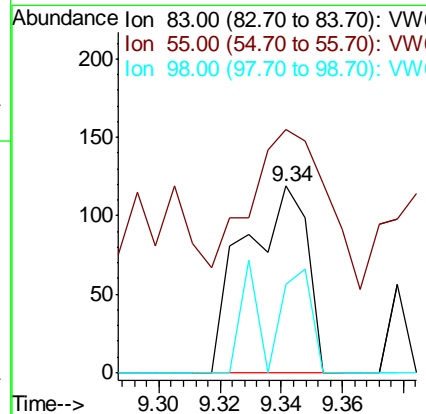
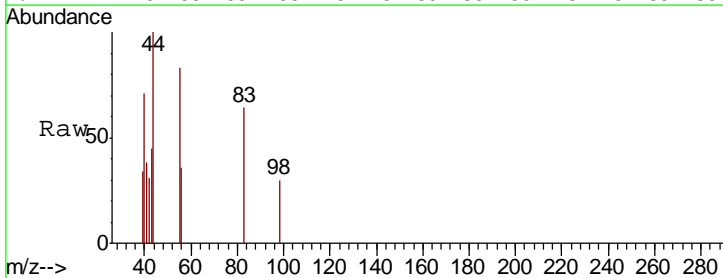
Instrument :
 MSVOA_W
 ClientSampled :
 BIN-4

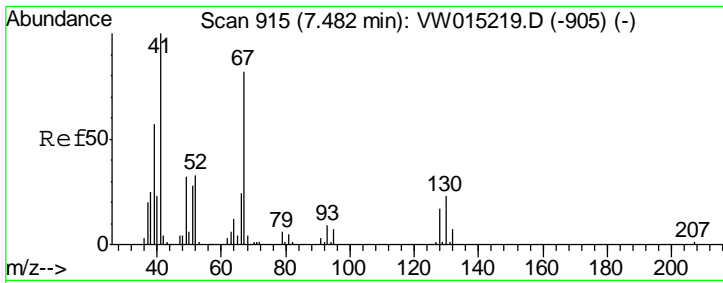
Tgt Ion	Resp	Lower	Upper
117	100		
119	0.0	72.3	108.5#
121	0.0	23.7	35.5#



#39
 Methylcyclohexane
 Concen: 2.361 ug/l
 RT: 9.34 min Scan# 1220
 Delta R.T. 0.01 min
 Lab File: VW015247.D
 Acq: 21 Apr 2020 01:35

Tgt Ion	Resp	Lower	Upper
83	100		
55	61.3	58.1	87.1
98	47.1	40.2	60.4

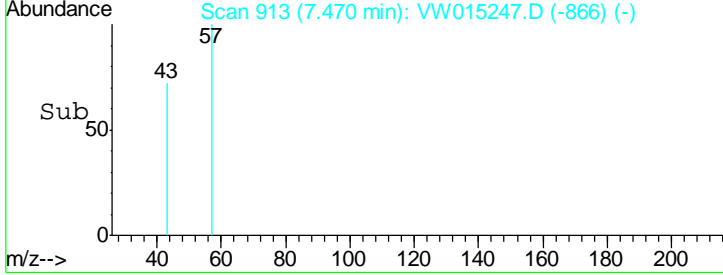
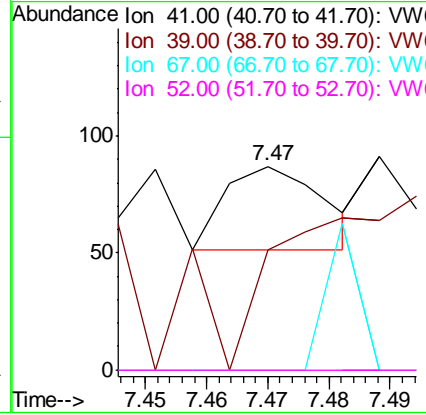
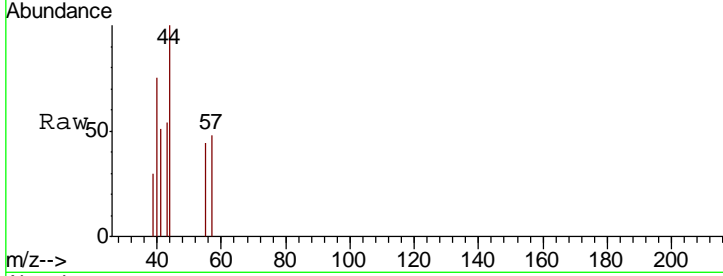




#41
 Methacrylonitrile
 Concen: 3.796 ug/l
 RT: 7.47 min Scan# 913
 Delta R.T. -0.01 min
 Lab File: VW015247.D
 Acq: 21 Apr 2020 01:35

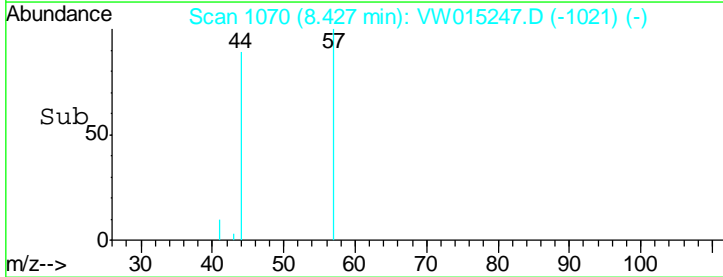
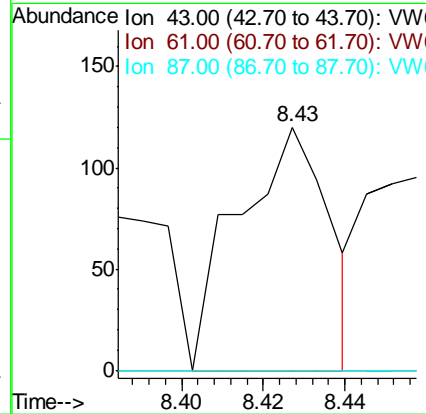
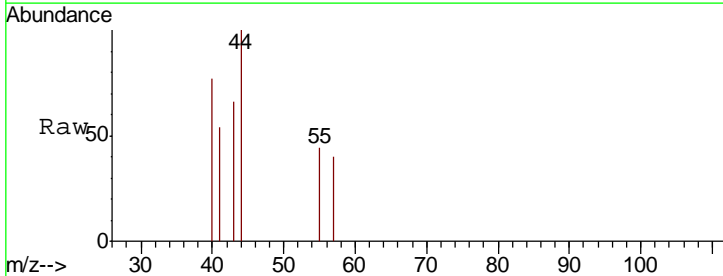
Instrument :
 MSVOA_W
 ClientSampled :
 BIN-4

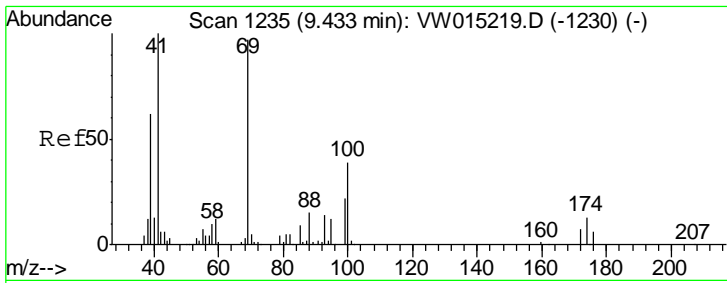
Tgt Ion	Resp	Lower	Upper
41	100		
39	0.0	41.9	62.9#
67	57.5	60.6	91.0#
52	0.0	23.8	35.8#



#43
 Isopropyl Acetate
 Concen: 5.104 ug/l
 RT: 8.43 min Scan# 1070
 Delta R.T. 0.00 min
 Lab File: VW015247.D
 Acq: 21 Apr 2020 01:35

Tgt Ion	Resp	Lower	Upper
43	100		
61	0.0	24.8	37.2#
87	0.0	11.4	17.2#

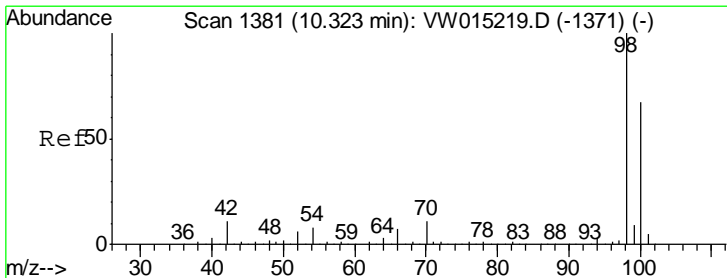
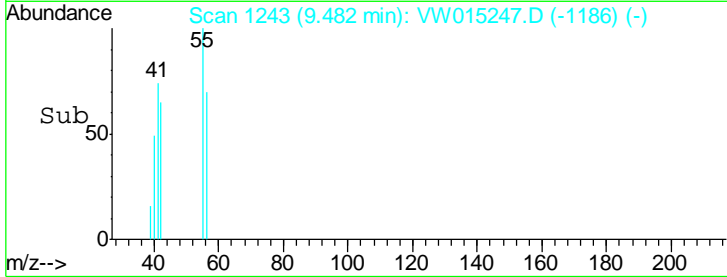
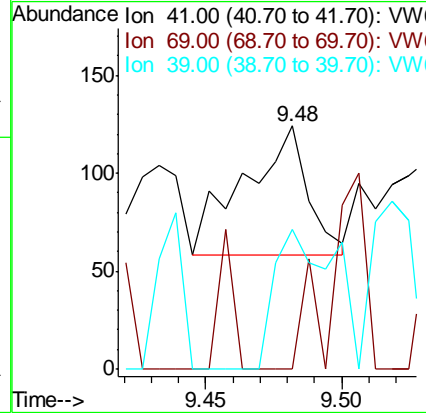
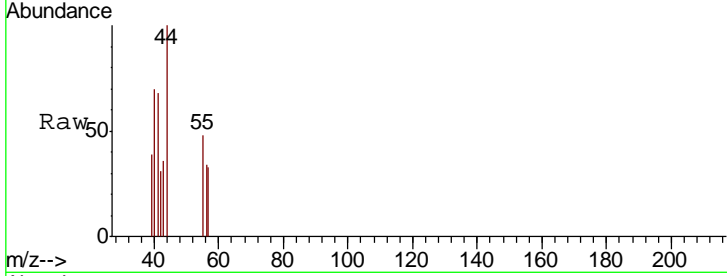




#48
 Methyl methacrylate
 Concen: 6.203 ug/l
 RT: 9.48 min Scan# 1243
 Delta R.T. 0.05 min
 Lab File: VW015247.D
 Acq: 21 Apr 2020 01:35

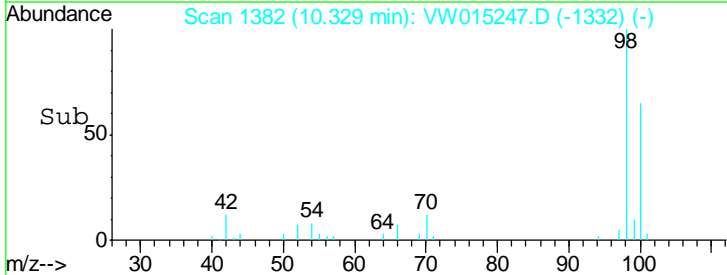
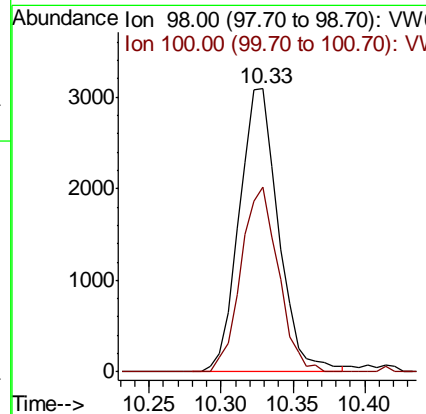
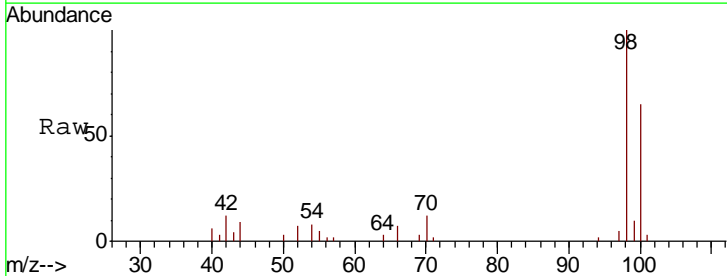
Instrument :
 MSVOA_W
ClientSampled :
 BIN-4

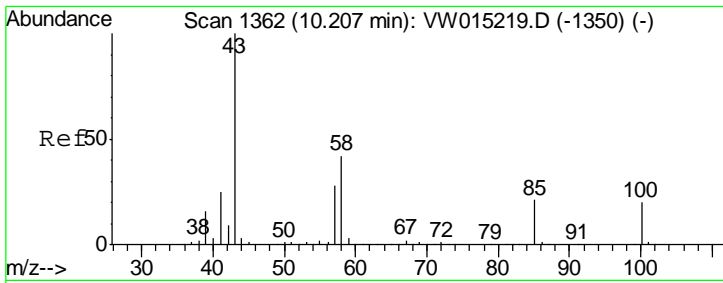
Tgt Ion	Resp	Lower	Upper
41	100		
69	0.0	70.6	105.8#
39	100.0	42.6	64.0#



#50
 Toluene-d8
 Concen: 41.870 ug/l
 RT: 10.33 min Scan# 1382
 Delta R.T. 0.01 min
 Lab File: VW015247.D
 Acq: 21 Apr 2020 01:35

Tgt Ion	Resp	Lower	Upper
98	100		
100	62.2	52.9	79.3

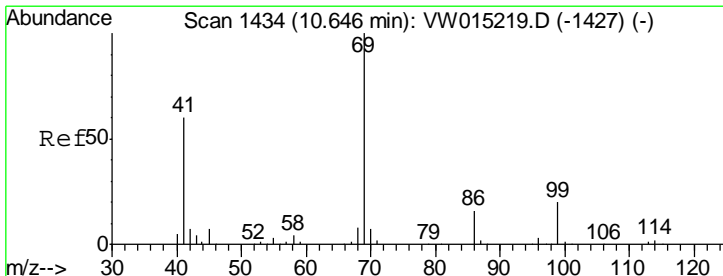
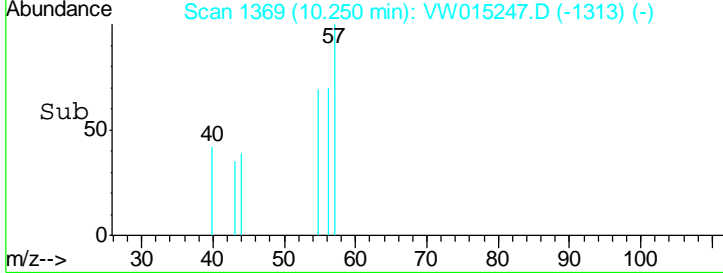
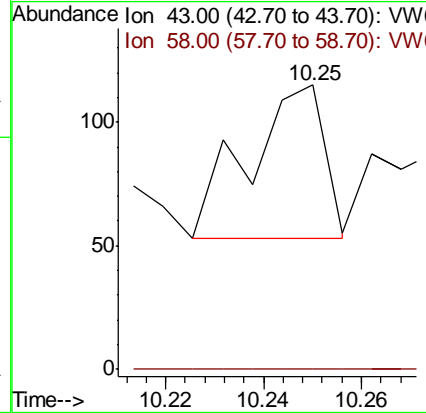
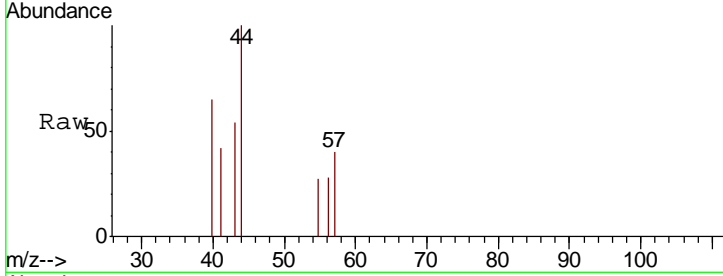




#51
 4-Methyl-2-Pentanone
 Concen: 3.875 ug/l
 RT: 10.25 min Scan# 1369
 Delta R.T. 0.04 min
 Lab File: VW015247.D
 Acq: 21 Apr 2020 01:35

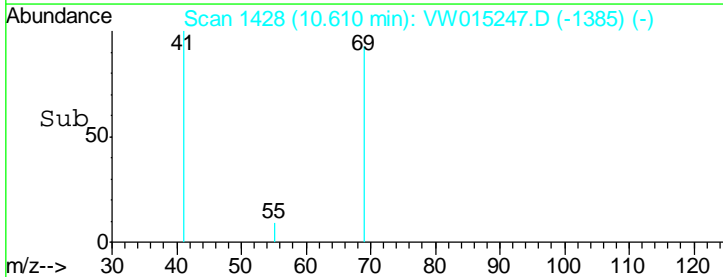
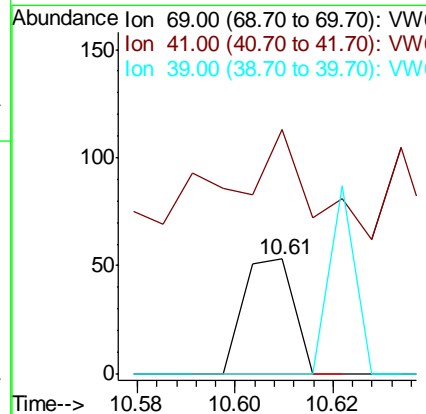
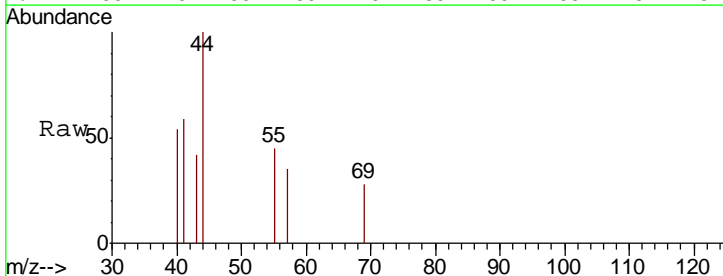
Instrument :
 MSVOA_W
 ClientSampled :
 BIN-4

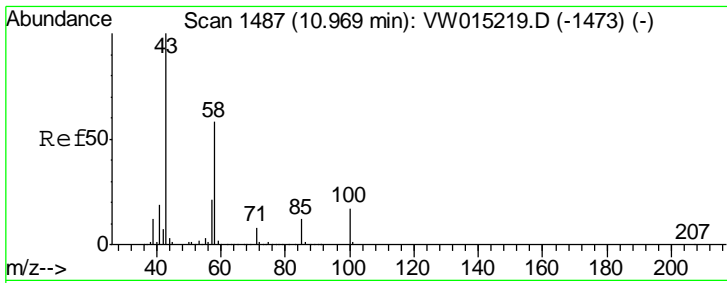
Tgt Ion	Resp	Lower	Upper
43	100		
58	0.0	32.3	48.5#



#56
 Ethyl methacrylate
 Concen: 1.083 ug/l
 RT: 10.61 min Scan# 1428
 Delta R.T. -0.04 min
 Lab File: VW015247.D
 Acq: 21 Apr 2020 01:35

Tgt Ion	Resp	Lower	Upper
69	100		
41	155.3	51.3	76.9#
39	84.2	24.6	37.0#



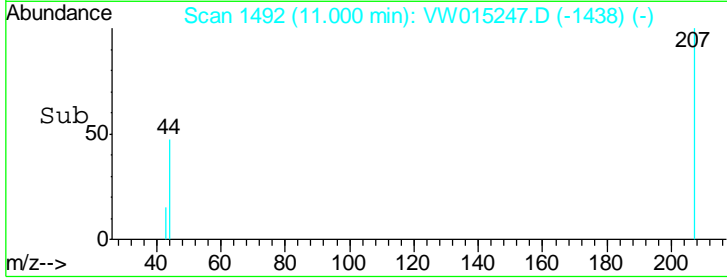
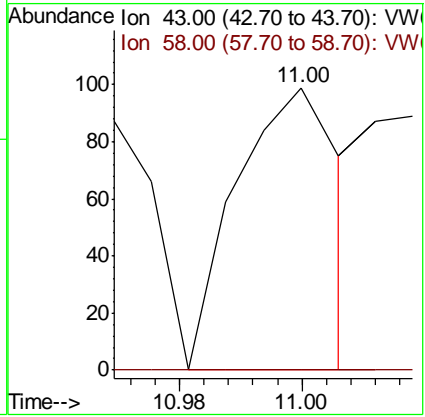
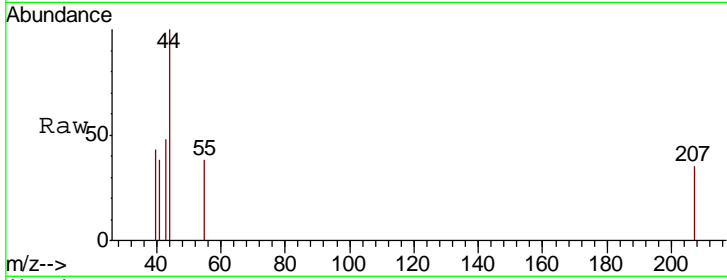


#59
 2-Hexanone
 Concen: 9.399 ug/l
 RT: 11.00 min Scan# 1492
 Delta R.T. 0.03 min
 Lab File: VW015247.D
 Acq: 21 Apr 2020 01:35

Instrument : MSVOA_W
 ClientSampled : BIN-4

Tgt Ion: 43 Resp: 116

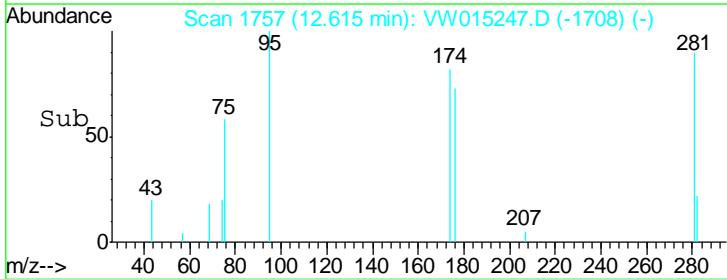
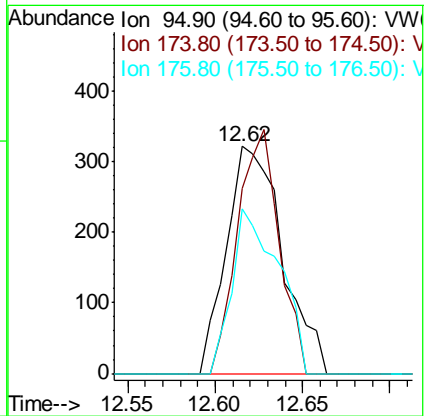
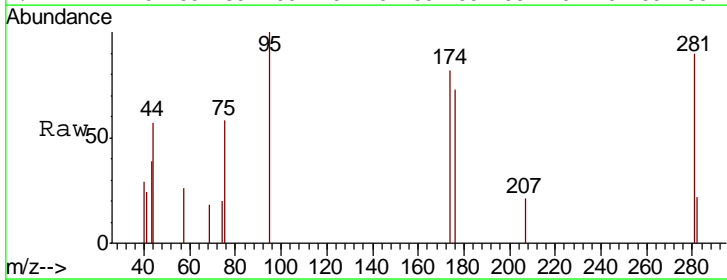
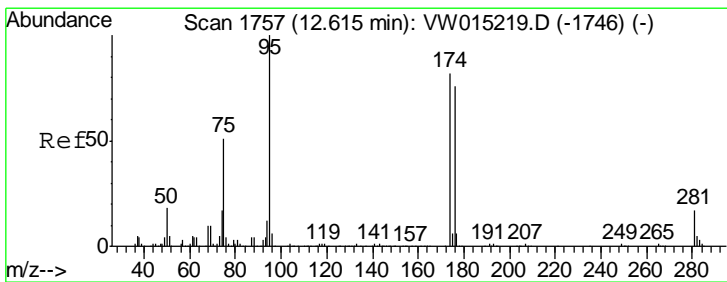
Ion	Ratio	Lower	Upper
43	100		
58	0.0	28.1	84.3#

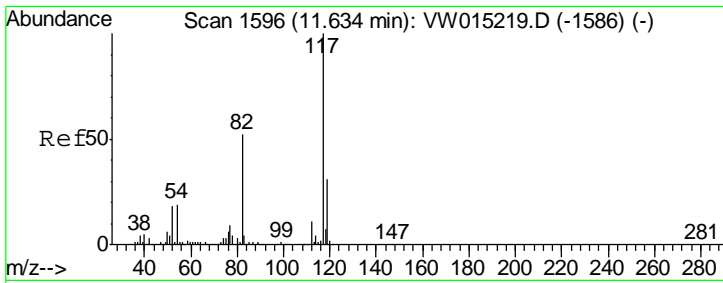


#62
 4-Bromofluorobenzene
 Concen: 13.509 ug/l
 RT: 12.62 min Scan# 1757
 Delta R.T. 0.00 min
 Lab File: VW015247.D
 Acq: 21 Apr 2020 01:35

Tgt Ion: 95 Resp: 720

Ion	Ratio	Lower	Upper
95	100		
174	79.2	0.0	144.4
176	60.6	0.0	140.6

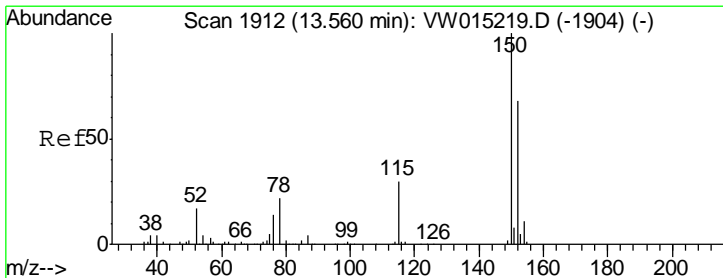
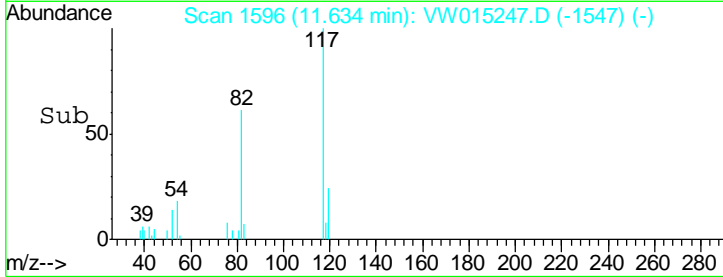
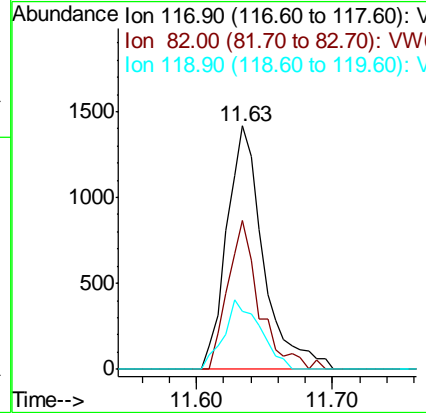
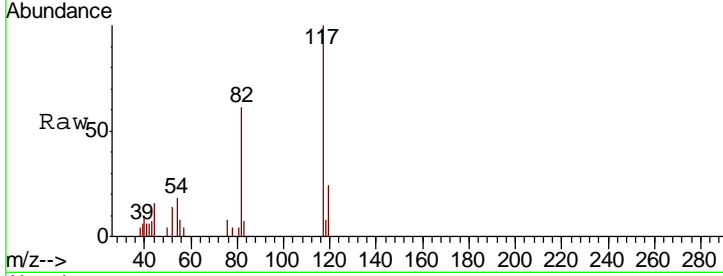




#63
 Chlorobenzene-d5
 Concen: 50.000 ug/l
 RT: 11.63 min Scan# 1596
 Delta R.T. 0.00 min
 Lab File: VW015247.D
 Acq: 21 Apr 2020 01:35

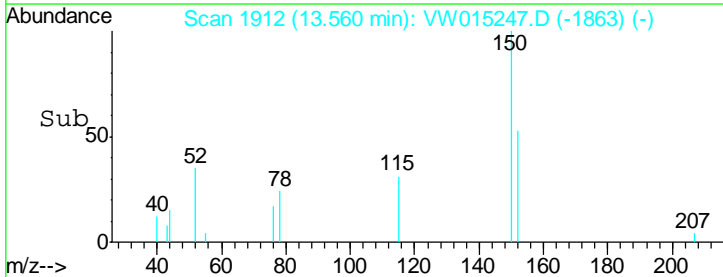
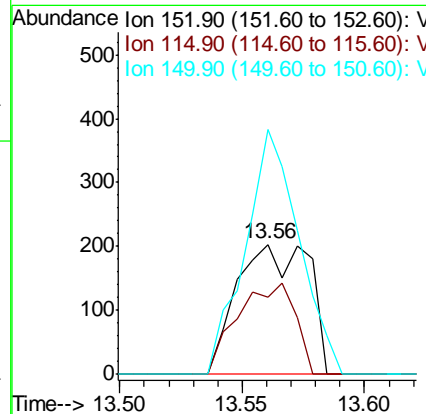
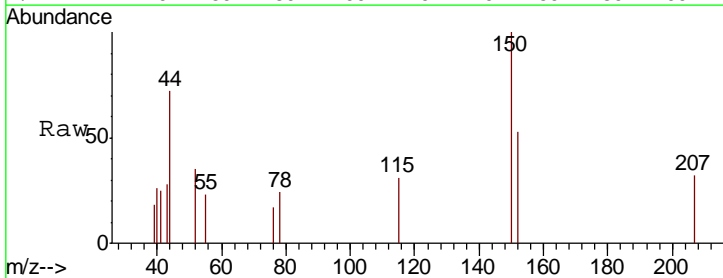
Instrument :
 MSVOA_W
 ClientSampled :
 BIN-4

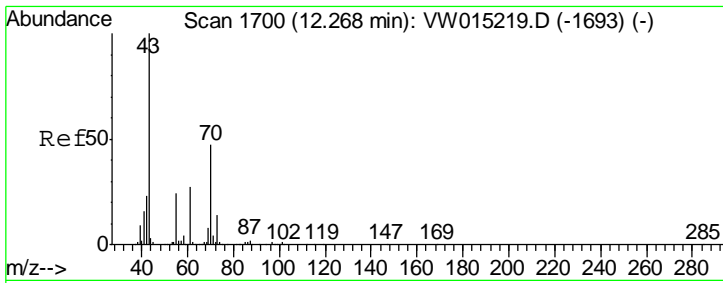
Tgt Ion	Resp	Lower	Upper
117	2641		
82	61.0	44.1	66.1
119	23.6	24.9	37.3#



#72
 1,4-Dichlorobenzene-d4
 Concen: 50.000 ug/l
 RT: 13.56 min Scan# 1912
 Delta R.T. 0.00 min
 Lab File: VW015247.D
 Acq: 21 Apr 2020 01:35

Tgt Ion	Resp	Lower	Upper
152	413		
115	55.7	31.3	93.9
150	140.9	0.0	343.4

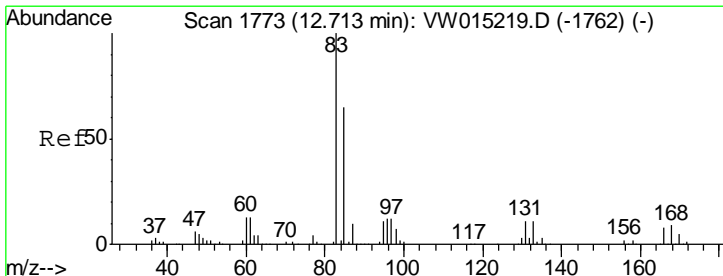
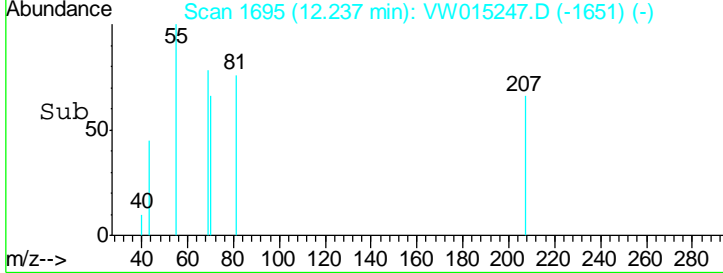
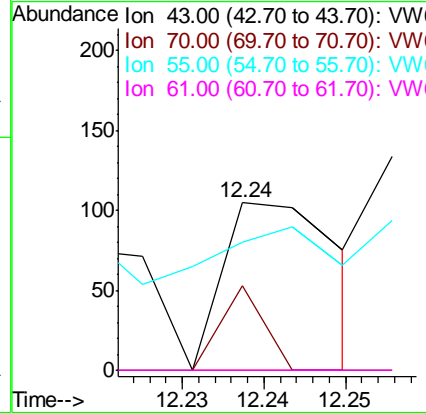
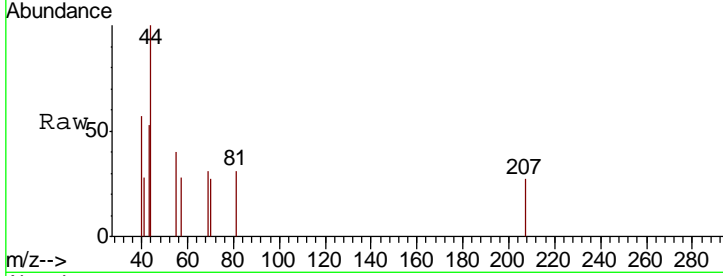




#74
 N-amyl acetate
 Concen: 20.676 ug/l
 RT: 12.24 min Scan# 1695
 Delta R.T. -0.03 min
 Lab File: VW015247.D
 Acq: 21 Apr 2020 01:35

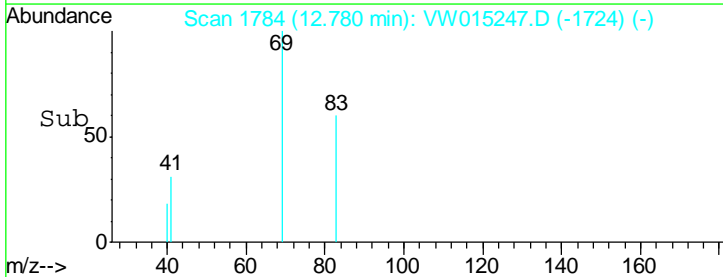
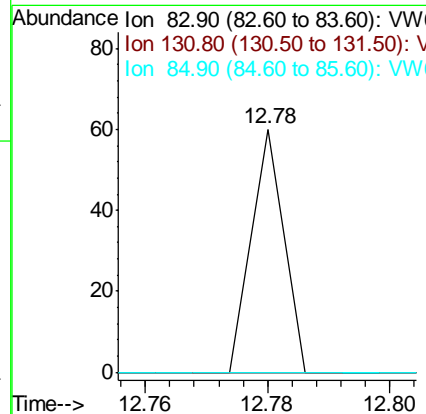
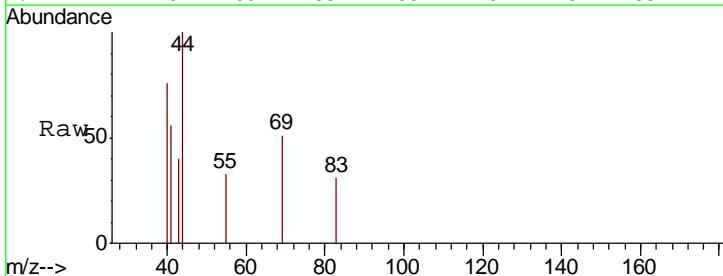
Instrument : MSVOA_W
 ClientSampled : BIN-4

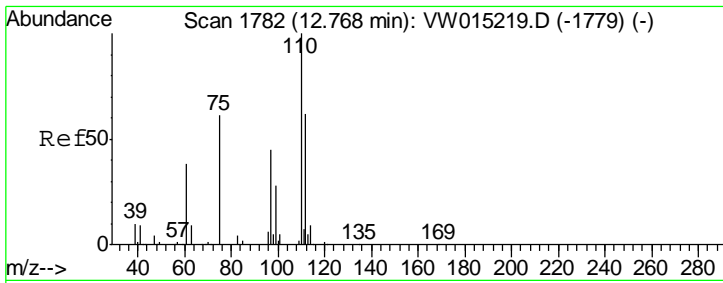
Tgt Ion	Resp	Lower	Upper
43	103		
70	18.4	35.4	53.2#
55	117.5	18.5	27.7#
61	0.0	20.3	30.5#



#75
 1,1,2,2-Tetrachloroethane
 Concen: 5.411 ug/l
 RT: 12.78 min Scan# 1784
 Delta R.T. 0.07 min
 Lab File: VW015247.D
 Acq: 21 Apr 2020 01:35

Tgt Ion	Resp	Lower	Upper
83	22		
83	100		
131	0.0	5.1	15.2#
85	0.0	32.3	96.8#

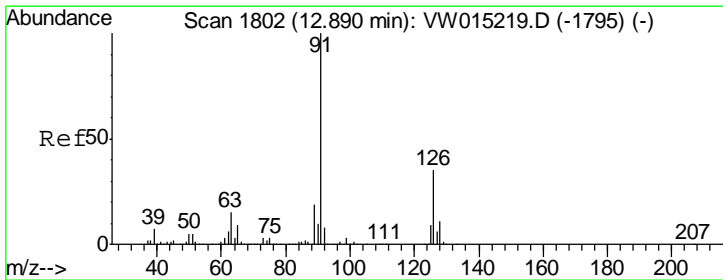
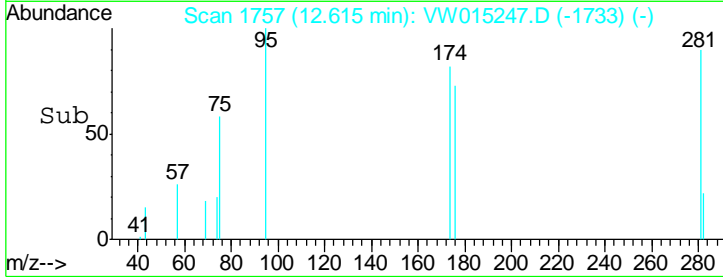
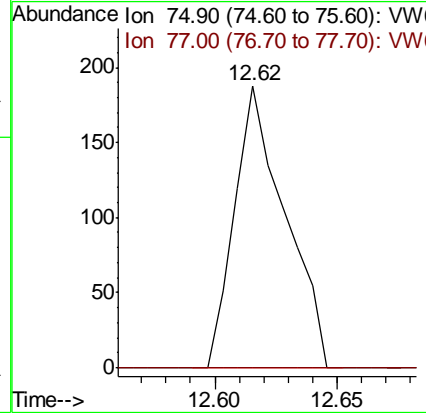
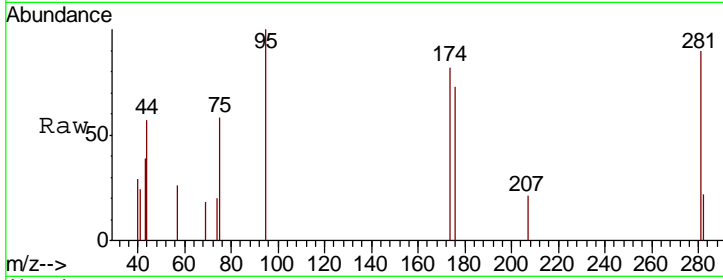




#76
 1,2,3-Trichloropropane
 Concen: 84.194 ug/l
 RT: 12.62 min Scan# 1757
 Delta R.T. -0.15 min
 Lab File: VW015247.D
 Acq: 21 Apr 2020 01:35

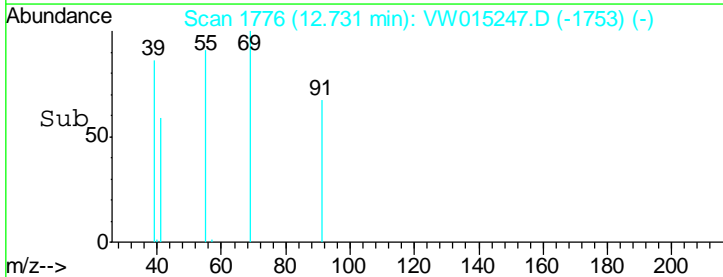
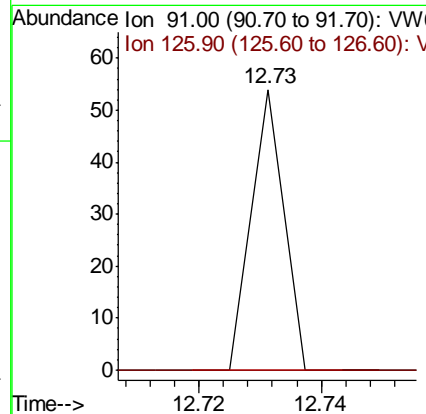
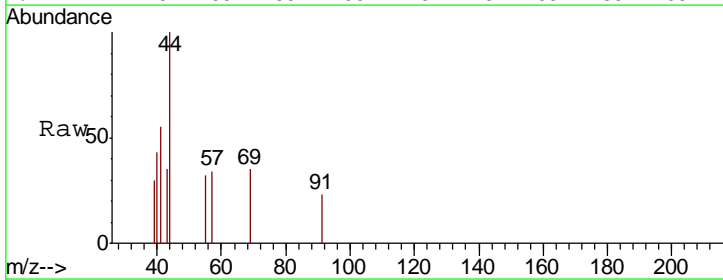
Instrument :
 MSVOA_W
 ClientSampled :
 BIN-4

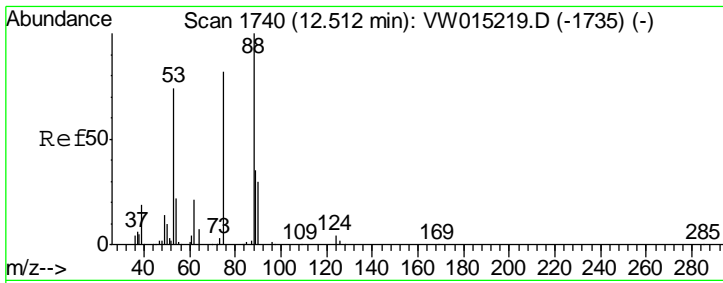
Tgt Ion	Resp	Lower	Upper
75	100	0.0	0.0
77	0.0	0.0	0.0



#79
 2-Chlorotoluene
 Concen: 1.064 ug/l
 RT: 12.73 min Scan# 1776
 Delta R.T. -0.16 min
 Lab File: VW015247.D
 Acq: 21 Apr 2020 01:35

Tgt Ion	Resp	Lower	Upper
91	100	0.0	16.8
126	0.0	16.8	50.4#

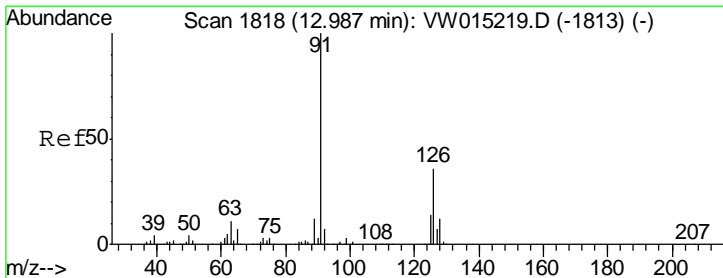
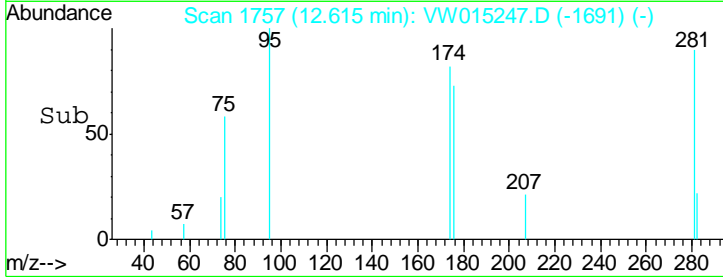
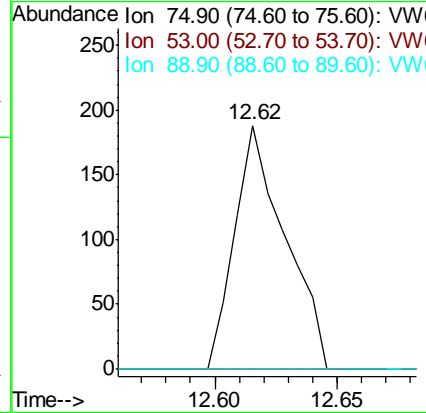
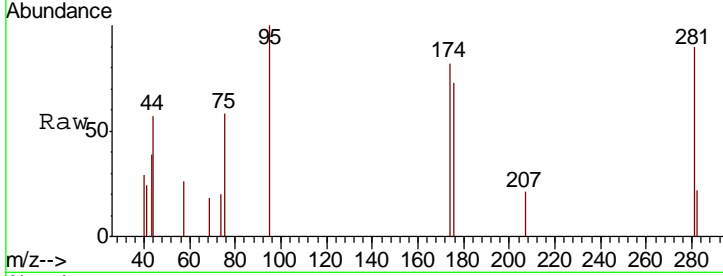




#81
 trans-1,4-Dichloro-2-butene
 Concen: 184.049 ug/l
 RT: 12.62 min Scan# 1757
 Delta R.T. 0.10 min
 Lab File: VW015247.D
 Acq: 21 Apr 2020 01:35

Instrument :
 MSVOA_W
 ClientSampled :
 BIN-4

Tgt Ion	Ratio	Lower	Upper
75	100		
53	0.0	69.4	104.2#
89	0.0	34.8	52.2#



#82
 4-Chlorotoluene
 Concen: 1.404 ug/l
 RT: 13.22 min Scan# 1856
 Delta R.T. 0.23 min
 Lab File: VW015247.D
 Acq: 21 Apr 2020 01:35

Tgt Ion	Ratio	Lower	Upper
91	100		
126	0.0	16.8	50.3#

