

Data Path : Z:\voasrv\HPCHEM1\MSVOA W\Data\VW042219\
 Data File : VW010084.D
 Acq On : 22 Apr 2019 16:06
 Operator : SY/VA
 Sample : K2455-12
 Misc : 5.04G/10ML/MSVOA W/SOIL
 ALS Vial : 1 Sample Multiplier: 1

Instrument :
 MSVOA_W
 ClientSampleId :
 GAHR2

Integration Parameters: LSCINT.P

Integrator: RTE
 Smoothing : OFF
 Sampling : 1
 Start Thrs: 0.2
 Stop Thrs : 0

Filtering: 5
 Min Area: 0 % of largest Peak
 Max Peaks: 100
 Peak Location: TOP

If leading or trailing edge < 100 prefer < Baseline drop else tangent >
 Peak separation: 5

Method : Z:\VOASRV\HPCHEM1\MSVOA_W\METHOD\SOM2WLM041519S.M
 Title : VOC Analysis

Signal : TIC

peak #	R.T. min	first scan	max scan	last scan	PK TY	peak height	corr. area	corr. % max.	% of total
1	2.154	36	41	46	rBV4	5117	12005	0.02%	0.009%
2	2.215	48	51	52	rBV3	2425	2507	0.00%	0.002%
3	2.355	68	74	86	rBV	105706	240992	0.45%	0.188%
4	2.641	115	121	122	rBV5	6164	11524	0.02%	0.009%
5	2.891	154	162	179	rBV	88840	250234	0.47%	0.196%
6	3.849	313	319	320	rBV4	3288	4128	0.01%	0.003%
7	4.007	333	345	357	rBV	261261	865814	1.63%	0.677%
8	4.391	401	408	420	rVV2	9066	26005	0.05%	0.020%
9	4.909	477	493	509	rBV3	71963	296230	0.56%	0.232%
10	5.147	528	532	534	rBV3	1040	1653	0.00%	0.001%
11	5.934	651	661	670	rVB4	11688	34941	0.07%	0.027%
12	6.964	828	830	833	rBV3	1274	1719	0.00%	0.001%
13	7.080	839	849	866	rBV	80126	243769	0.46%	0.191%
14	7.256	871	878	885	rVB	16699	38047	0.07%	0.030%
15	7.537	916	924	931	rVB7	2892	5700	0.01%	0.004%
16	7.647	931	942	955	rBV	471098	1144142	2.16%	0.895%
17	7.878	974	980	982	rBV7	1059	1628	0.00%	0.001%
18	7.945	985	991	992	rBV5	2274	3730	0.01%	0.003%
19	8.061	1007	1010	1013	rVV5	1389	1815	0.00%	0.001%
20	8.275	1035	1045	1061	rVV2	887803	2612135	4.92%	2.043%
21	8.396	1061	1065	1070	rVV7	2248	4503	0.01%	0.004%
22	8.677	1107	1111	1114	rBV5	1837	2679	0.01%	0.002%
23	8.842	1129	1138	1147	rBV	998629	1975042	3.72%	1.544%
24	8.939	1151	1154	1159	rVB6	1634	3104	0.01%	0.002%
25	9.079	1168	1177	1186	rVB8	6664	16749	0.03%	0.013%
26	9.207	1194	1198	1199	rBV3	1705	1762	0.00%	0.001%
27	9.274	1199	1209	1227	rVB	632065	1265133	2.38%	0.989%
28	9.658	1267	1272	1278	rBV8	4102	7492	0.01%	0.006%
29	9.762	1282	1289	1294	rBV5	3501	8694	0.02%	0.007%
30	9.890	1302	1310	1319	rVB4	8551	17013	0.03%	0.013%
31	10.030	1324	1333	1344	rBV	332005	609392	1.15%	0.477%
32	10.122	1344	1348	1355	rVB9	3159	7380	0.01%	0.006%
33	10.250	1365	1369	1373	rVB3	3607	4810	0.01%	0.004%
34	10.323	1373	1381	1388	rBV	1259045	2219765	4.18%	1.736%

Data Path : Z:\voasrv\HPCHEM1\MSVOA W\Data\VW042219\
 Data File : VW010084.D
 Acq On : 22 Apr 2019 16:06
 Operator : SY/VA
 Sample : K2455-12
 Misc : 5.04G/10ML/MSVOA W/SOIL
 ALS Vial : 1 Sample Multiplier: 1

Instrument :
 MSVOA_W
 ClientSampleId :
 GAHR2

Integration Parameters: LSCINT.P

Integrator: RTE
 Smoothing : OFF
 Sampling : 1
 Start Thrs: 0.2
 Stop Thrs : 0

Filtering: 5
 Min Area: 0 % of largest Peak
 Max Peaks: 100
 Peak Location: TOP

If leading or trailing edge < 100 prefer < Baseline drop else tangent >
 Peak separation: 5

Method : Z:\VOASRV\HPCHEM1\MSVOA_W\METHOD\SOM2WLM041519S.M
 Title : VOC Analysis

35	10.390	1388	1392	1398	rVB	13646	24382	0.05%	0.019%
36	10.445	1398	1401	1406	rVB6	1419	2231	0.00%	0.002%
37	10.488	1406	1408	1410	rBV3	2069	2596	0.00%	0.002%
38	10.579	1415	1423	1430	rBV	218973	380489	0.72%	0.298%
39	10.701	1438	1443	1449	rBV3	7014	14640	0.03%	0.011%
40	10.774	1453	1455	1458	rVB3	3350	2740	0.01%	0.002%
41	10.853	1463	1468	1473	rBV8	5040	11161	0.02%	0.009%
42	10.927	1473	1480	1496	rBV	319662	549722	1.04%	0.430%
43	11.048	1498	1500	1501	rBV2	1858	1949	0.00%	0.002%
44	11.073	1501	1504	1510	rVB5	7608	11269	0.02%	0.009%
45	11.189	1521	1523	1527	rVB5	1501	1614	0.00%	0.001%
46	11.274	1534	1537	1539	rBV4	1907	1908	0.00%	0.001%
47	11.298	1539	1541	1542	rBV2	2472	1738	0.00%	0.001%
48	11.353	1544	1550	1552	rBV5	6840	14778	0.03%	0.012%
49	11.402	1555	1558	1564	rVV7	4368	7942	0.01%	0.006%
50	11.634	1587	1596	1603	rBV	1397999	2459036	4.63%	1.923%
51	11.835	1623	1629	1634	rBV6	31434	88801	0.17%	0.069%
52	12.323	1707	1709	1710	rBV2	2313	1717	0.00%	0.001%
53	12.432	1717	1727	1729	rBV9	20700	61903	0.12%	0.048%
54	12.609	1752	1756	1762	rBV3	25511	53479	0.10%	0.042%
55	12.695	1763	1770	1781	rVB	449186	767588	1.45%	0.600%
56	12.896	1786	1803	1806	rBV4	157137	638765	1.20%	0.500%
57	13.109	1832	1838	1845	rBV6	14322	35274	0.07%	0.028%
58	13.255	1856	1862	1865	rBV	78261	132268	0.25%	0.103%
59	13.304	1865	1870	1873	rBV	153789	281759	0.53%	0.220%
60	13.475	1890	1898	1906	rVB4	62449	221171	0.42%	0.173%
61	13.560	1906	1912	1921	rVB	1446041	2282276	4.30%	1.785%
62	13.627	1921	1923	1929	rVB3	25786	36267	0.07%	0.028%
63	13.755	1930	1944	1954	rBV6	91142	402692	0.76%	0.315%
64	13.859	1954	1961	1967	rBV	1090242	1855510	3.50%	1.451%
65	13.944	1969	1975	1989	rVV3	229174	504413	0.95%	0.394%
66	14.066	1989	1995	1998	rVV5	33186	61490	0.12%	0.048%
67	14.097	1998	2000	2004	rVB	38185	50180	0.09%	0.039%
68	14.145	2004	2008	2014	rVB	61289	114163	0.22%	0.089%
69	14.237	2015	2023	2028	rBV	316197	491672	0.93%	0.384%
70	14.292	2028	2032	2036	rBV2	73127	119929	0.23%	0.094%
71	14.420	2046	2053	2056	rBV	90384	146553	0.28%	0.115%

Data Path : Z:\voasrv\HPCHEM1\MSVOA W\Data\VW042219\
 Data File : VW010084.D
 Acq On : 22 Apr 2019 16:06
 Operator : SY/VA
 Sample : K2455-12
 Misc : 5.04G/10ML/MSVOA W/SOIL
 ALS Vial : 1 Sample Multiplier: 1

Instrument :
 MSVOA_W
 ClientSampleId :
 GAHR2

Integration Parameters: LSCINT.P

Integrator: RTE
 Smoothing : OFF Filtering: 5
 Sampling : 1 Min Area: 0 % of largest Peak
 Start Thrs: 0.2 Max Peaks: 100
 Stop Thrs : 0 Peak Location: TOP

If leading or trailing edge < 100 prefer < Baseline drop else tangent >
 Peak separation: 5

Method : Z:\VOASRV\HPCHEM1\MSVOA_W\METHOD\SOM2WLM041519S.M
 Title : VOC Analysis

72	14.469	2056	2061	2065	rVV3	233323	403723	0.76%	0.316%
73	14.511	2065	2068	2070	rVV2	82870	129401	0.24%	0.101%
74	14.560	2071	2076	2081	rVB3	383994	662739	1.25%	0.518%
75	14.694	2093	2098	2101	rBV	85733	137670	0.26%	0.108%
76	14.731	2101	2104	2108	rVV2	59444	85840	0.16%	0.067%
77	14.798	2108	2115	2122	rVV3	340533	702098	1.32%	0.549%
78	14.877	2122	2128	2135	rVV	1088240	1783106	3.36%	1.394%
79	14.956	2135	2141	2150	rVB	1882881	3232323	6.09%	2.528%
80	15.066	2150	2159	2163	rBV6	201095	508748	0.96%	0.398%
81	15.115	2164	2167	2173	rVB4	156526	290488	0.55%	0.227%
82	15.182	2173	2178	2185	rBV5	128184	336657	0.63%	0.263%
83	15.322	2190	2201	2203	rBV3	247317	591604	1.11%	0.463%
84	15.371	2203	2209	2217	rVB	6872314	12122180	22.84%	9.480%
85	15.475	2222	2226	2231	rVB3	135523	217793	0.41%	0.170%
86	15.560	2238	2240	2247	rVB3	93255	129065	0.24%	0.101%
87	15.663	2248	2257	2261	rBV3	234583	575308	1.08%	0.450%
88	15.718	2261	2266	2274	rVB5	207440	592060	1.12%	0.463%
89	15.804	2275	2280	2282	rBV3	114290	197185	0.37%	0.154%
90	15.852	2282	2288	2293	rBV2	505192	933131	1.76%	0.730%
91	15.901	2293	2296	2301	rVB	216944	369224	0.70%	0.289%
92	15.974	2301	2308	2314	rBV3	678503	1700452	3.20%	1.330%
93	16.096	2324	2328	2335	rVB3	164590	335775	0.63%	0.263%
94	16.176	2335	2341	2344	rBV8	98163	215338	0.41%	0.168%
95	16.255	2349	2354	2366	rVB	302139	737687	1.39%	0.577%
96	16.383	2367	2375	2378	rBV4	215166	515731	0.97%	0.403%
97	16.450	2378	2386	2401	rVB	24755774	53076370	100.00%	41.506%
98	16.578	2401	2407	2411	rBV3	106133	245197	0.46%	0.192%
99	16.651	2411	2419	2429	rVB	10403351	23165645	43.65%	18.116%
100	16.755	2430	2436	2441	rBV2	46770	105885	0.20%	0.083%

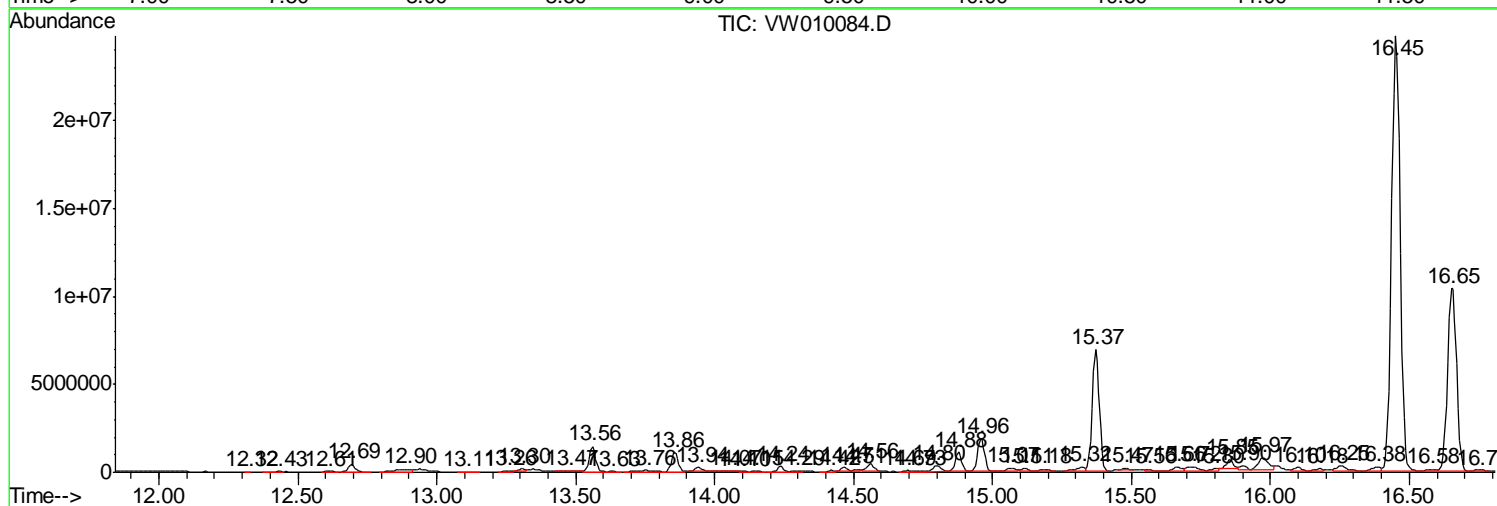
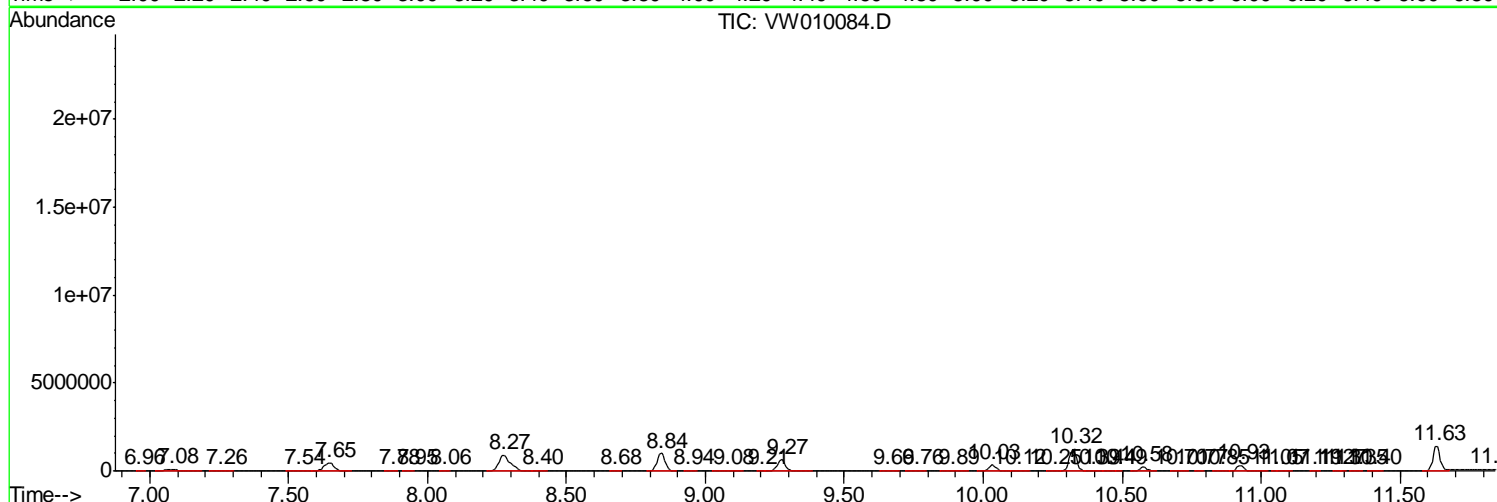
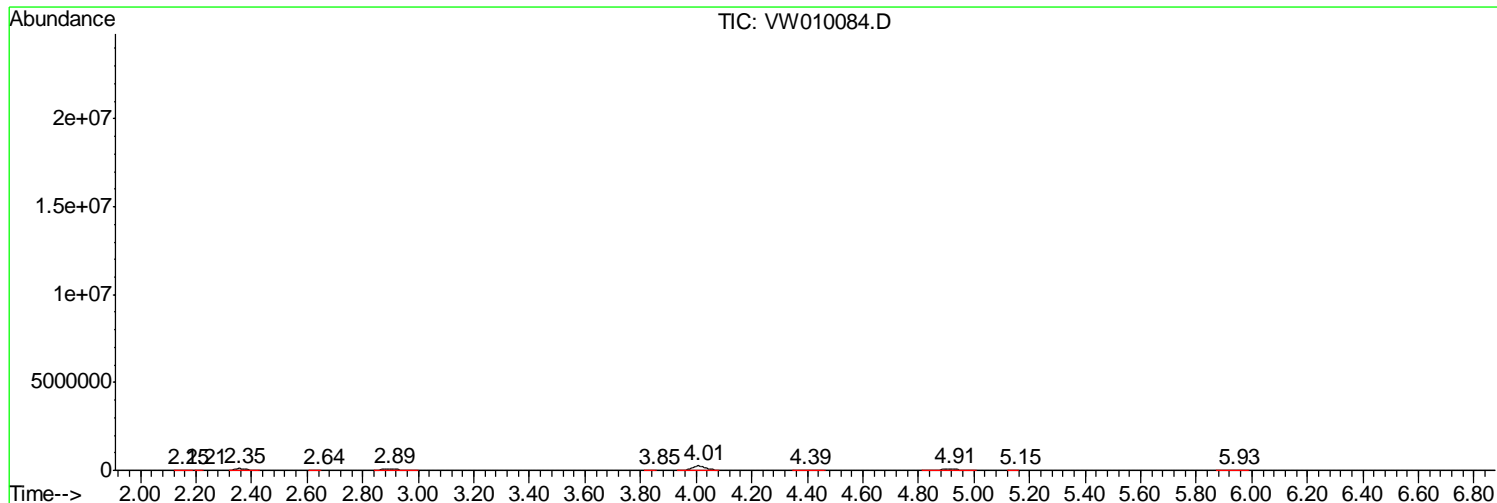
Sum of corrected areas: 127876724

Data Path : Z:\voasrv\HPCHEM1\MSVOA W\Data\VW042219\
 Data File : VW010084.D
 Acq On : 22 Apr 2019 16:06
 Operator : SY/VA
 Sample : K2455-12
 Misc : 5.04G/10ML/MSVOA W/SOIL
 ALS Vial : 1 Sample Multiplier: 1

Instrument :
 MSVOA_W
 ClientSampleId :
 GAHR2

Quant Method : Z:\VOASRV\HPCHEM1\MSVOA_W\METHOD\SOM2WLM041519S.M
 Quant Title : VOC Analysis

TIC Library : C:\DATABASE\NIST11.L
 TIC Integration Parameters: LSCINT.P



Data Path : Z:\voasrv\HPCHEM1\MSVOA W\Data\VW042219\
 Data File : VW010084.D
 Acq On : 22 Apr 2019 16:06
 Operator : SY/VA
 Sample : K2455-12
 Misc : 5.04G/10ML/MSVOA W/SOIL
 ALS Vial : 1 Sample Multiplier: 1

Instrument :
 MSVOA_W
 ClientSampleID :
 GAHR2

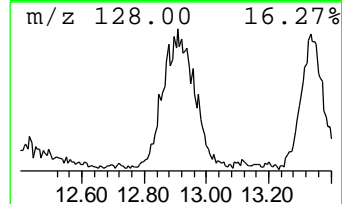
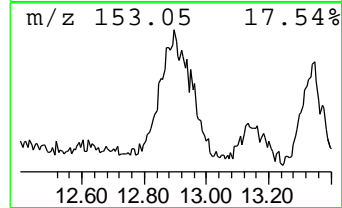
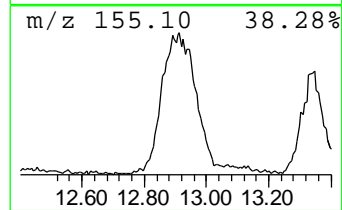
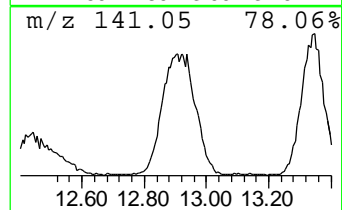
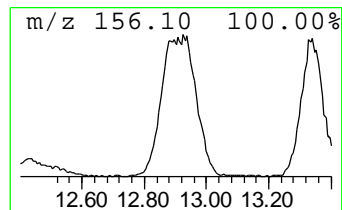
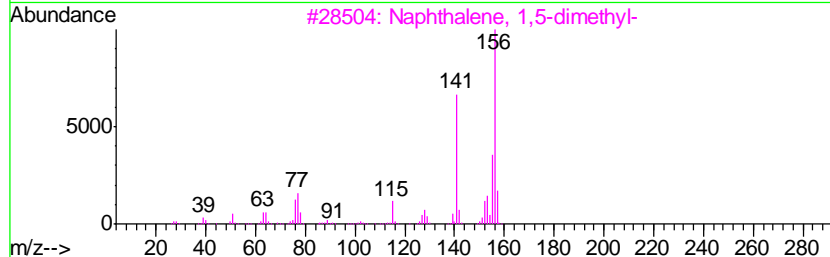
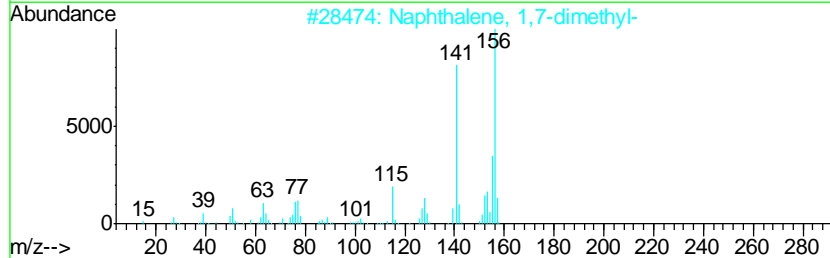
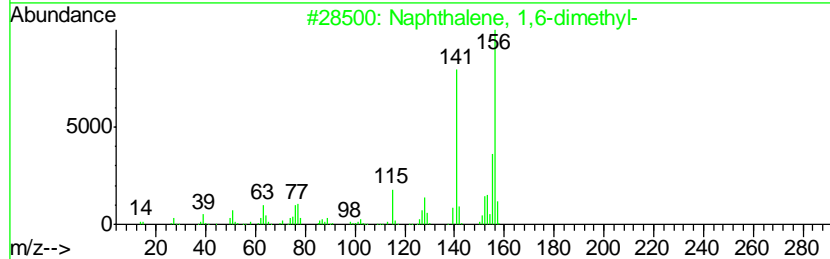
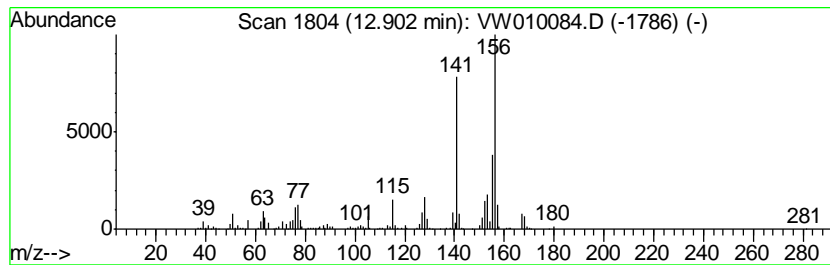
Quant Method : Z:\VOASRV\HPCHEM1\MSVOA_W\METHOD\SOM2WLM041519S.M
 Quant Title : VOC Analysis

TIC Library : C:\DATABASE\NIST11.L
 TIC Integration Parameters: LSCINT.P

 Peak Number 2 Naphthalene, 1,6-dimethyl- Concentration Rank 12

R.T.	EstConc	Area	Relative to ISTD	R.T.
12.90	7.00 ug/L	638765	1,4-Dichlorobenzene-d4	13.56

Hit#	of	Tentative ID	MW	MolForm	CAS#	Qual
1	5	Naphthalene, 1,6-dimethyl-	156	C12H12	000575-43-9	96
2		Naphthalene, 1,7-dimethyl-	156	C12H12	000575-37-1	96
3		Naphthalene, 1,5-dimethyl-	156	C12H12	000571-61-9	96
4		Naphthalene, 1,3-dimethyl-	156	C12H12	000575-41-7	96
5		Naphthalene, 1,6-dimethyl-	156	C12H12	000575-43-9	95



Data Path : Z:\voasrv\HPCHEM1\MSVOA W\Data\VW042219\
 Data File : VW010084.D
 Acq On : 22 Apr 2019 16:06
 Operator : SY/VA
 Sample : K2455-12
 Misc : 5.04G/10ML/MSVOA W/SOIL
 ALS Vial : 1 Sample Multiplier: 1

Instrument :
 MSVOA_W
 ClientSampled :
 GAHR2

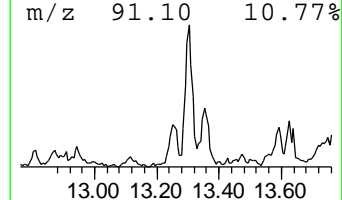
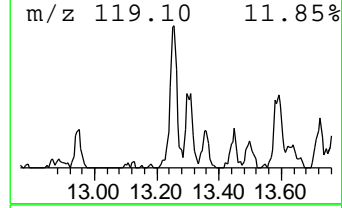
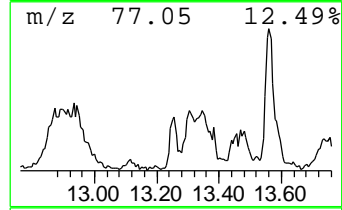
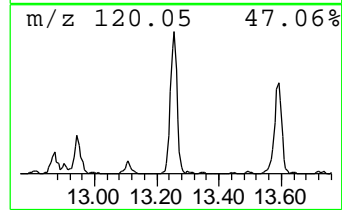
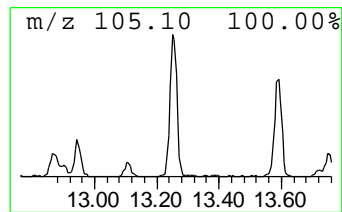
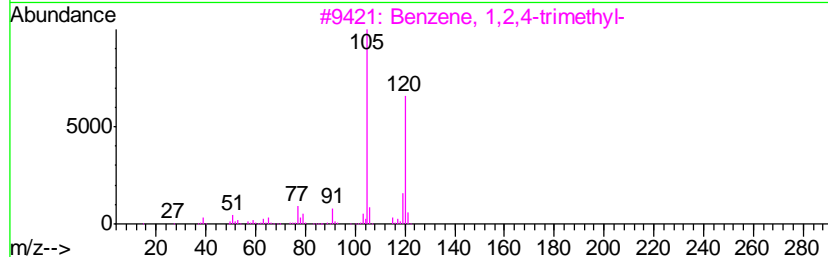
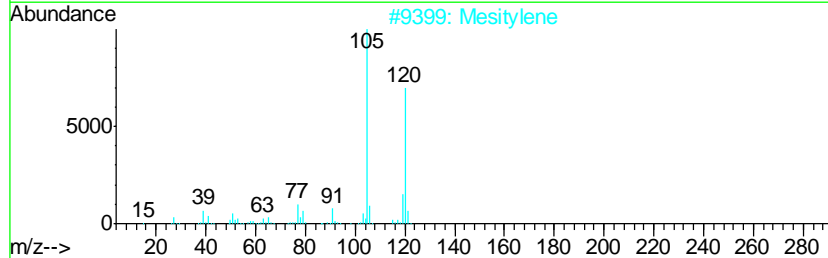
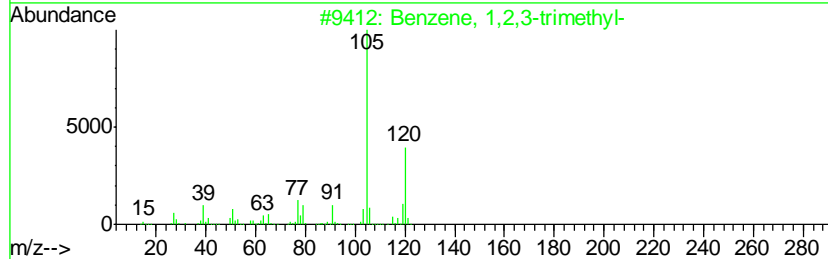
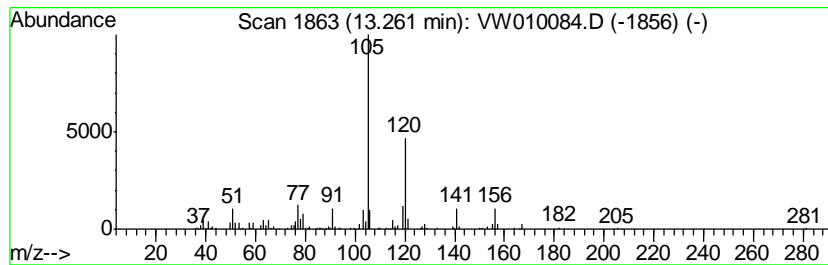
Quant Method : Z:\VOASRV\HPCHEM1\MSVOA_W\METHOD\SOM2WLM041519S.M
 Quant Title : VOC Analysis

TIC Library : C:\DATABASE\NIST11.L
 TIC Integration Parameters: LSCINT.P

 Peak Number 3 Benzene, 1,2,3-trimethyl- Concentration Rank 34

R.T.	EstConc	Area	Relative to ISTD	R.T.
13.26	1.45 ug/L	132268	1,4-Dichlorobenzene-d4	13.56

Hit#	of	Tentative ID	MW	MolForm	CAS#	Qual
1	5	Benzene, 1,2,3-trimethyl-	120	C9H12	000526-73-8	91
2		Mesitylene	120	C9H12	000108-67-8	90
3		Benzene, 1,2,4-trimethyl-	120	C9H12	000095-63-6	90
4		Benzene, 1,2,4-trimethyl-	120	C9H12	000095-63-6	90
5		Benzene, 1,2,4-trimethyl-	120	C9H12	000095-63-6	90



Data Path : Z:\voasrv\HPCHEM1\MSVOA W\Data\VW042219\
 Data File : VW010084.D
 Acq On : 22 Apr 2019 16:06
 Operator : SY/VA
 Sample : K2455-12
 Misc : 5.04G/10ML/MSVOA W/SOIL
 ALS Vial : 1 Sample Multiplier: 1

Instrument :
 MSVOA_W
 ClientSampleID :
 GAHR2

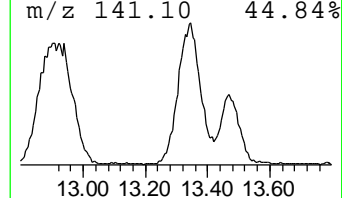
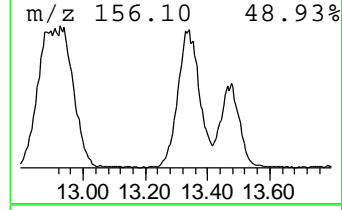
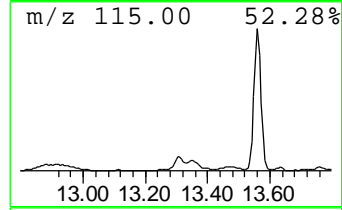
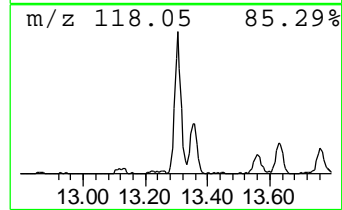
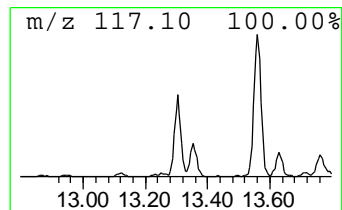
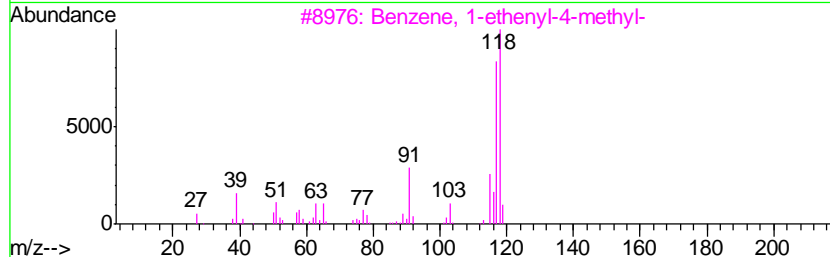
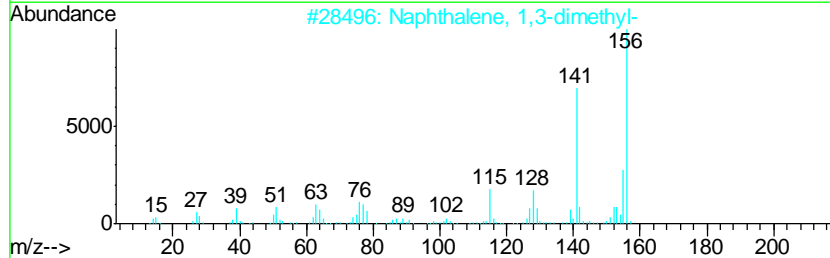
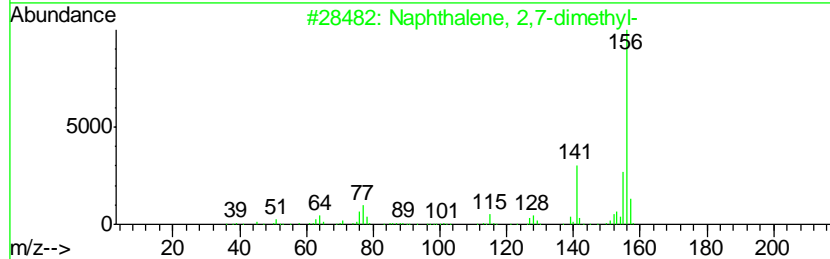
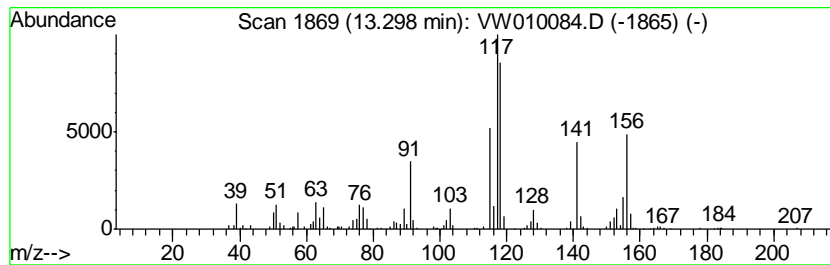
Quant Method : Z:\VOASRV\HPCHEM1\MSVOA_W\METHOD\SOM2WLM041519S.M
 Quant Title : VOC Analysis

TIC Library : C:\DATABASE\NIST11.L
 TIC Integration Parameters: LSCINT.P

 Peak Number 4 Naphthalene, 2,7-dimethyl- Concentration Rank 26

R.T.	EstConc	Area	Relative to ISTD	R.T.
13.30	3.09 ug/L	281759	1,4-Dichlorobenzene-d4	13.56

Hit#	of	Tentative ID	MW	MolForm	CAS#	Qual
1	5	Naphthalene, 2,7-dimethyl-	156	C12H12	000582-16-1	76
2		Naphthalene, 1,3-dimethyl-	156	C12H12	000575-41-7	70
3		Benzene, 1-ethenyl-4-methyl-	118	C9H10	000622-97-9	64
4		Benzene, 1-ethenyl-4-methyl-	118	C9H10	000622-97-9	64
5		Bicyclo[4.2.0]octa-1,3,5-triene,...	118	C9H10	055337-80-9	64



Data Path : Z:\voasrv\HPCHEM1\MSVOA W\Data\VW042219\
 Data File : VW010084.D
 Acq On : 22 Apr 2019 16:06
 Operator : SY/VA
 Sample : K2455-12
 Misc : 5.04G/10ML/MSVOA W/SOIL
 ALS Vial : 1 Sample Multiplier: 1

Instrument :
 MSVOA_W
 ClientSampleId :
 GAHR2

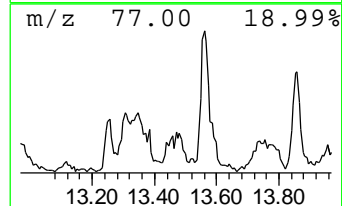
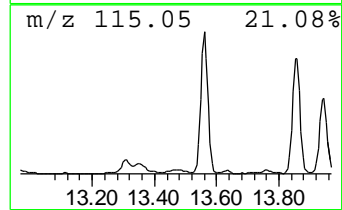
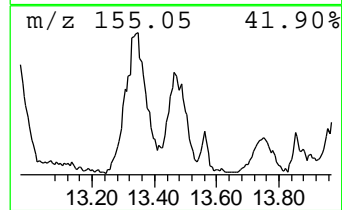
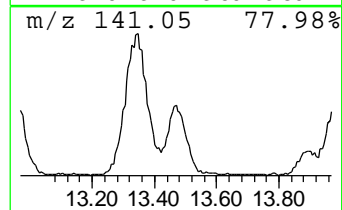
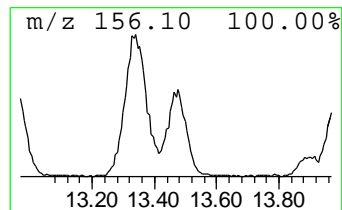
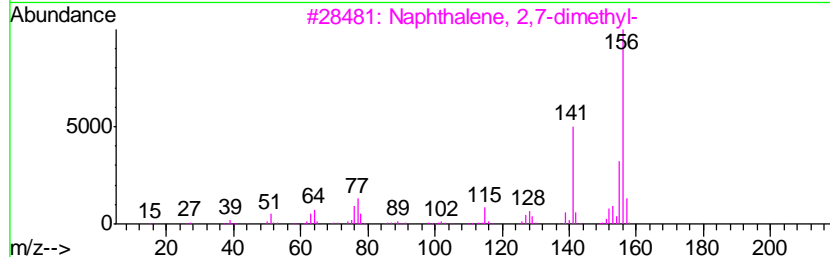
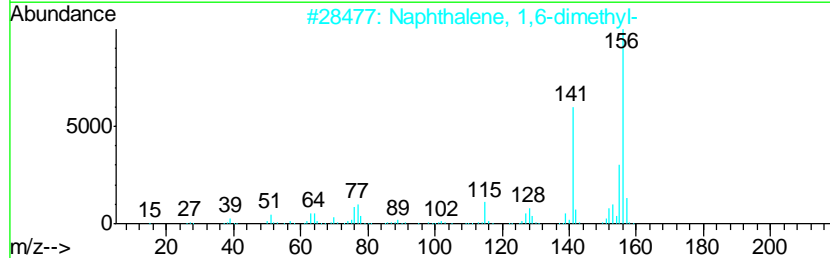
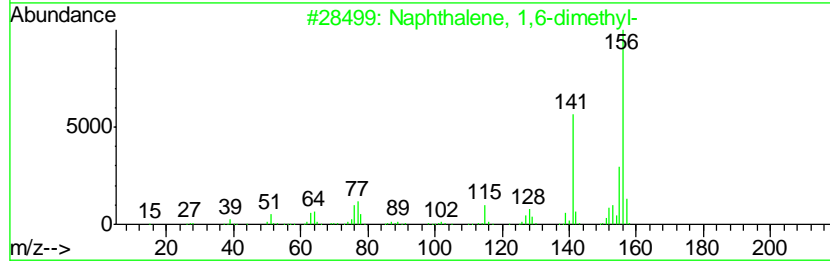
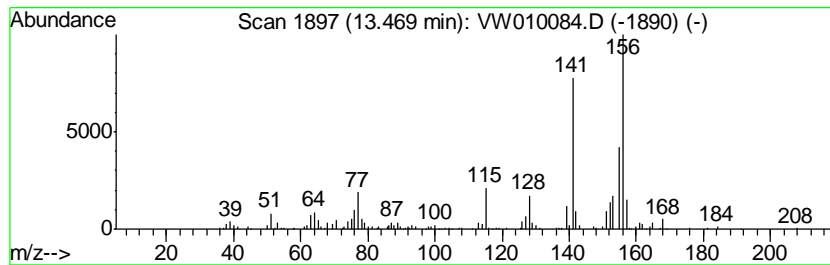
Quant Method : Z:\VOASRV\HPCHEM1\MSVOA_W\METHOD\SOM2WLM041519S.M
 Quant Title : VOC Analysis

TIC Library : C:\DATABASE\NIST11.L
 TIC Integration Parameters: LSCINT.P

 Peak Number 5 Naphthalene, 2,6-dimethyl- Concentration Rank 28

R.T.	EstConc	Area	Relative to ISTD	R.T.
13.47	2.42 ug/L	221171	1,4-Dichlorobenzene-d4	13.56

Hit#	of	Tentative ID	MW	MolForm	CAS#	Qual
1	5	Naphthalene, 1,6-dimethyl-	156	C12H12	000575-43-9	96
2		Naphthalene, 1,6-dimethyl-	156	C12H12	000575-43-9	95
3		Naphthalene, 2,7-dimethyl-	156	C12H12	000582-16-1	94
4		Naphthalene, 1,6-dimethyl-	156	C12H12	000575-43-9	94
5		Naphthalene, 2,6-dimethyl-	156	C12H12	000581-42-0	93



Data Path : Z:\voasrv\HPCHEM1\MSVOA W\Data\VW042219\
 Data File : VW010084.D
 Acq On : 22 Apr 2019 16:06
 Operator : SY/VA
 Sample : K2455-12
 Misc : 5.04G/10ML/MSVOA W/SOIL
 ALS Vial : 1 Sample Multiplier: 1

Instrument :
 MSVOA_W
 ClientSampled :
 GAHR2

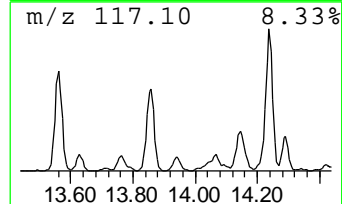
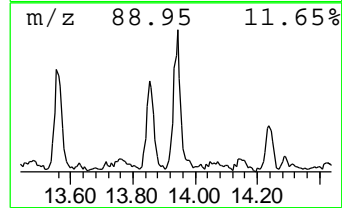
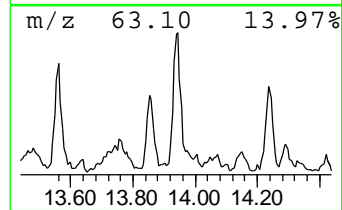
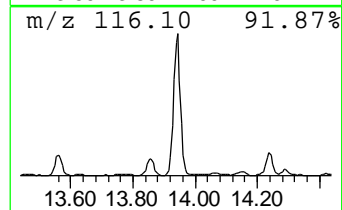
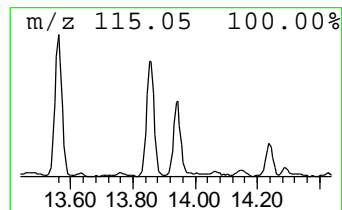
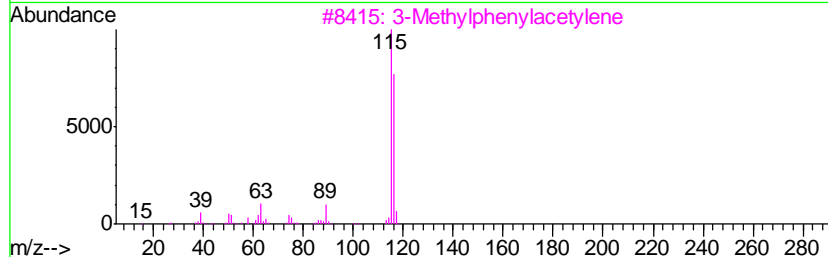
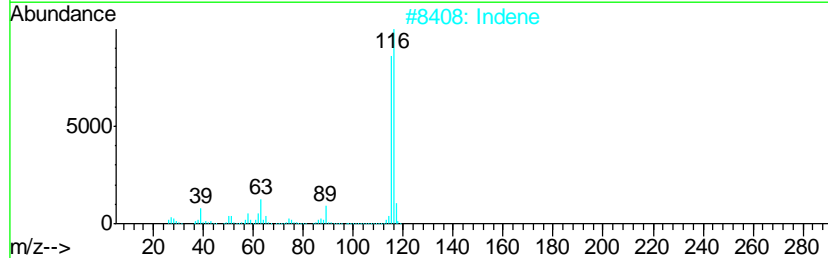
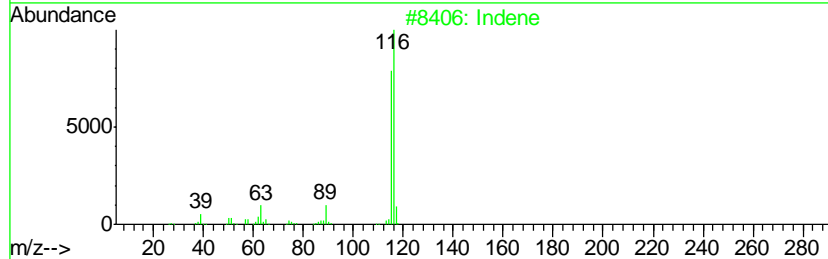
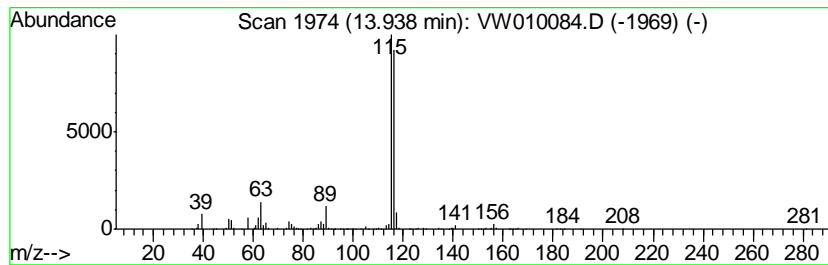
Quant Method : Z:\VOASRV\HPCHEM1\MSVOA_W\METHOD\SOM2WLM041519S.M
 Quant Title : VOC Analysis

TIC Library : C:\DATABASE\NIST11.L
 TIC Integration Parameters: LSCINT.P

 Peak Number 7 Indene Concentration Rank 18

R.T.	EstConc	Area	Relative to ISTD	R.T.
13.94	5.53 ug/L	504413	1,4-Dichlorobenzene-d4	13.56

Hit#	of	Tentative ID	MW	MolForm	CAS#	Qual
1	5	Indene	116	C9H8	000095-13-6	93
2		Indene	116	C9H8	000095-13-6	93
3		3-Methylphenylacetylene	116	C9H8	000766-82-5	91
4		Benzene, 1-propynyl-	116	C9H8	000673-32-5	91
5		Benzene, 1-propynyl-	116	C9H8	000673-32-5	90



Data Path : Z:\voasrv\HPCHEM1\MSVOA W\Data\VW042219\
 Data File : VW010084.D
 Acq On : 22 Apr 2019 16:06
 Operator : SY/VA
 Sample : K2455-12
 Misc : 5.04G/10ML/MSVOA W/SOIL
 ALS Vial : 1 Sample Multiplier: 1

Instrument :
 MSVOA_W
 ClientSampled :
 GAHR2

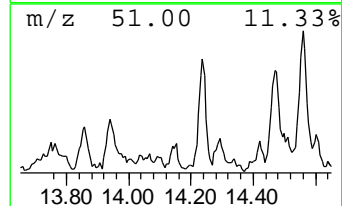
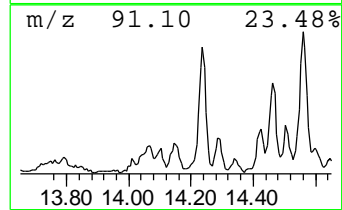
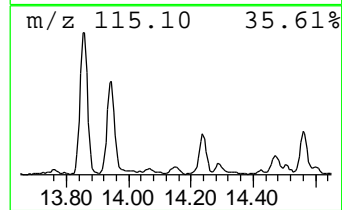
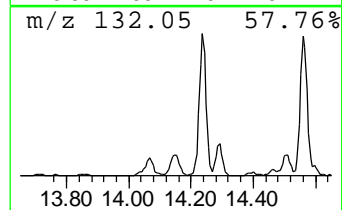
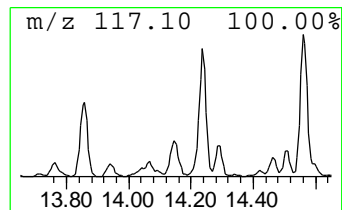
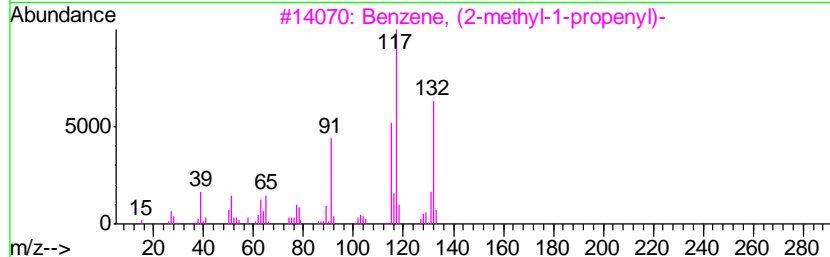
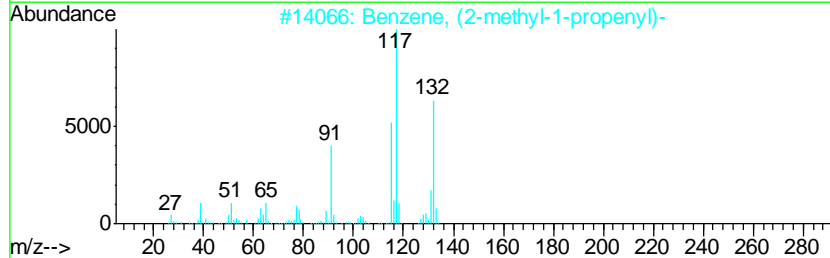
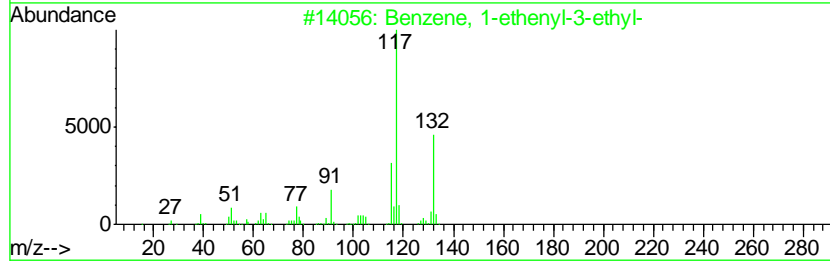
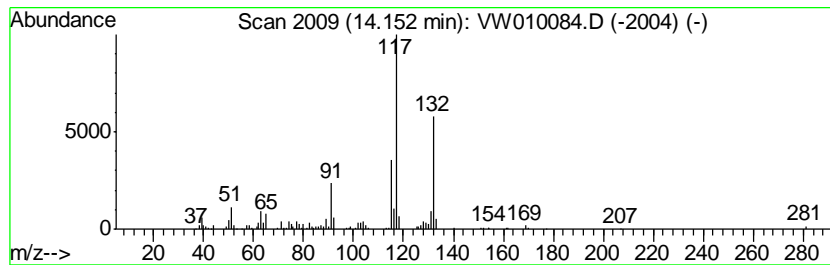
Quant Method : Z:\VOASRV\HPCHEM1\MSVOA_W\METHOD\SOM2WLM041519S.M
 Quant Title : VOC Analysis

TIC Library : C:\DATABASE\NIST11.L
 TIC Integration Parameters: LSCINT.P

 Peak Number 8 Benzene, 1-ethenyl-3-ethyl- Concentration Rank 38

R.T.	EstConc	Area	Relative to ISTD	R.T.
14.15	1.25 ug/L	114163	1,4-Dichlorobenzene-d4	13.56

Hit#	of	Tentative ID	MW	MolForm	CAS#	Qual
1	5	Benzene, 1-ethenyl-3-ethyl-	132	C10H12	007525-62-4	94
2		Benzene, (2-methyl-1-propenyl)-	132	C10H12	000768-49-0	93
3		Benzene, (2-methyl-1-propenyl)-	132	C10H12	000768-49-0	93
4		Benzene, (1-methyl-1-propenyl)-,...	132	C10H12	000768-00-3	93
5		Benzene, 1-ethenyl-3-ethyl-	132	C10H12	007525-62-4	90



Data Path : Z:\voasrv\HPCHEM1\MSVOA W\Data\VW042219\
 Data File : VW010084.D
 Acq On : 22 Apr 2019 16:06
 Operator : SY/VA
 Sample : K2455-12
 Misc : 5.04G/10ML/MSVOA W/SOIL
 ALS Vial : 1 Sample Multiplier: 1

Instrument :
 MSVOA_W
 ClientSampled :
 GAHR2

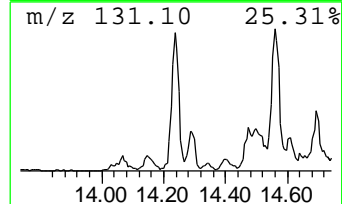
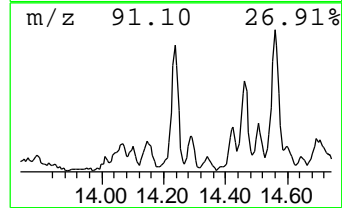
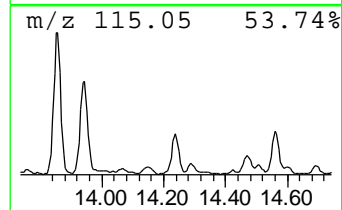
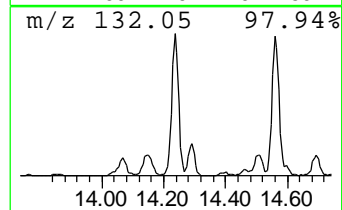
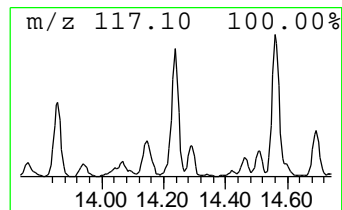
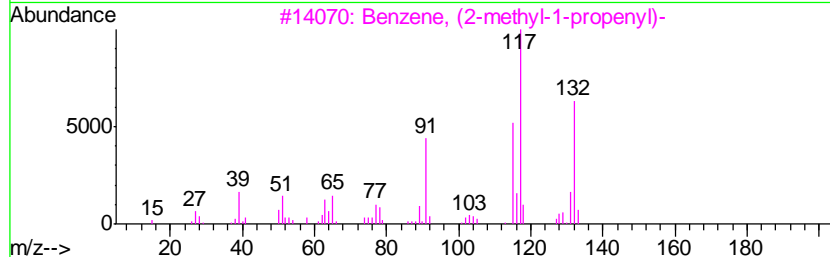
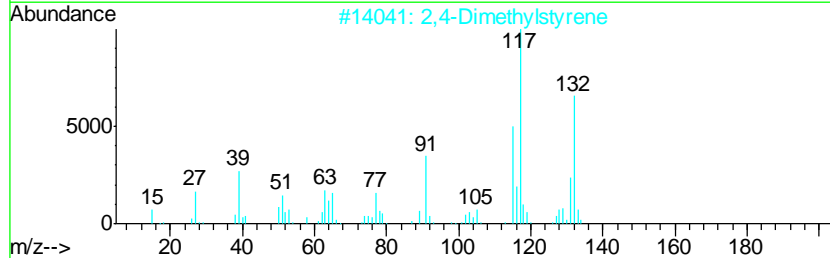
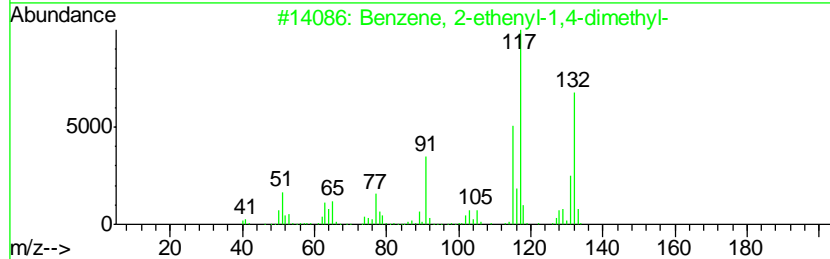
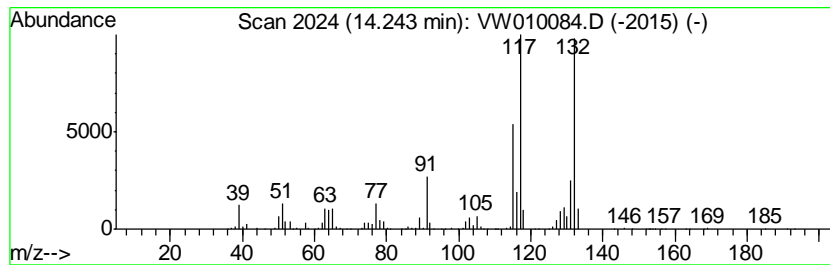
Quant Method : Z:\VOASRV\HPCHEM1\MSVOA_W\METHOD\SOM2WLM041519S.M
 Quant Title : VOC Analysis

TIC Library : C:\DATABASE\NIST11.L
 TIC Integration Parameters: LSCINT.P

 Peak Number 9 Benzene, 2-ethenyl-1,4-dime... Concentration Rank 19

R.T.	EstConc	Area	Relative to ISTD	R.T.
14.24	5.39 ug/L	491672	1,4-Dichlorobenzene-d4	13.56

Hit#	of	Tentative ID	MW	MolForm	CAS#	Qual
1	5	Benzene, 2-ethenyl-1,4-dimethyl-	132	C10H12	002039-89-6	97
2		2,4-Dimethylstyrene	132	C10H12	002234-20-0	97
3		Benzene, (2-methyl-1-propenyl)-	132	C10H12	000768-49-0	96
4		Benzene, 2-butenyl-	132	C10H12	001560-06-1	95
5		Benzene, 1-methyl-4-(2-propenyl)-	132	C10H12	003333-13-9	95



Data Path : Z:\voasrv\HPCHEM1\MSVOA W\Data\VW042219\
 Data File : VW010084.D
 Acq On : 22 Apr 2019 16:06
 Operator : SY/VA
 Sample : K2455-12
 Misc : 5.04G/10ML/MSVOA W/SOIL
 ALS Vial : 1 Sample Multiplier: 1

Instrument :
 MSVOA_W
 ClientSampled :
 GAHR2

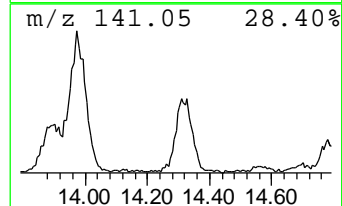
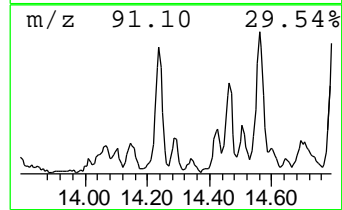
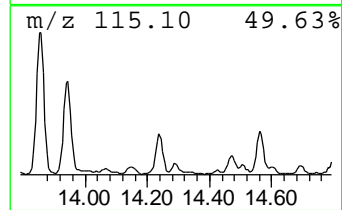
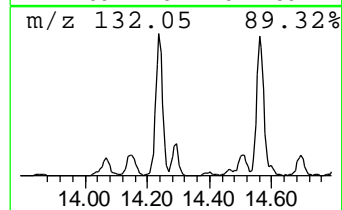
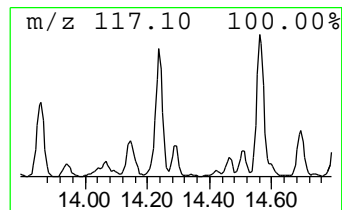
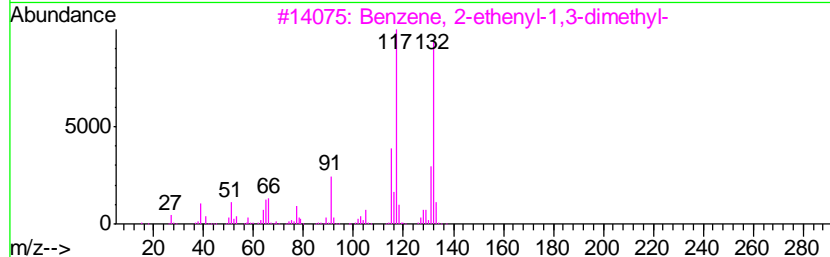
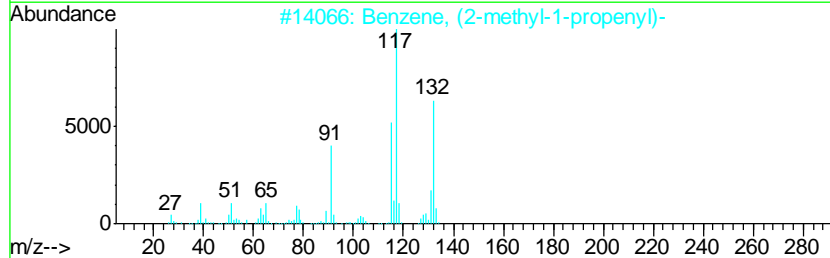
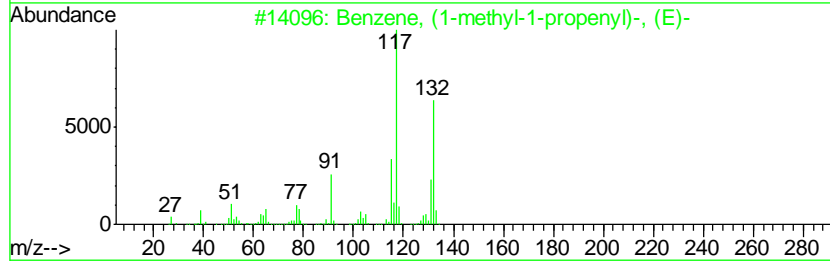
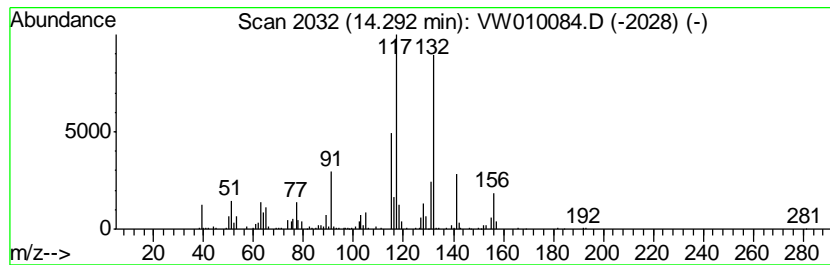
Quant Method : Z:\VOASRV\HPCHEM1\MSVOA_W\METHOD\SOM2WLM041519S.M
 Quant Title : VOC Analysis

TIC Library : C:\DATABASE\NIST11.L
 TIC Integration Parameters: LSCINT.P

 Peak Number 10 Benzene, (1-methyl-1-propen... Concentration Rank 37

R.T.	EstConc	Area	Relative to ISTD	R.T.
14.29	1.31 ug/L	119929	1,4-Dichlorobenzene-d4	13.56

Hit#	of	Tentative ID	MW	MolForm	CAS#	Qual
1	5	Benzene, (1-methyl-1-propenyl)-, ...	132	C10H12	000768-00-3	91
2		Benzene, (2-methyl-1-propenyl)-	132	C10H12	000768-49-0	91
3		Benzene, 2-ethenyl-1,3-dimethyl-	132	C10H12	002039-90-9	87
4		Benzene, 1-methyl-4-(2-propenyl)-	132	C10H12	003333-13-9	87
5		Benzene, (2-methyl-1-propenyl)-	132	C10H12	000768-49-0	87



Data Path : Z:\voasrv\HPCHEM1\MSVOA W\Data\VW042219\
 Data File : VW010084.D
 Acq On : 22 Apr 2019 16:06
 Operator : SY/VA
 Sample : K2455-12
 Misc : 5.04G/10ML/MSVOA W/SOIL
 ALS Vial : 1 Sample Multiplier: 1

Instrument :
 MSVOA_W
 ClientSampled :
 GAHR2

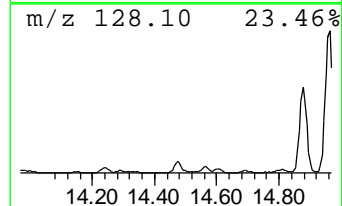
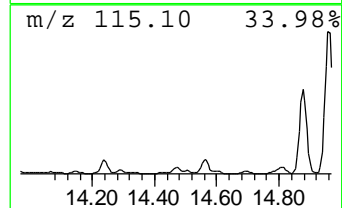
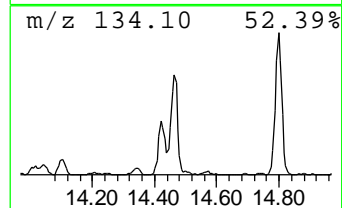
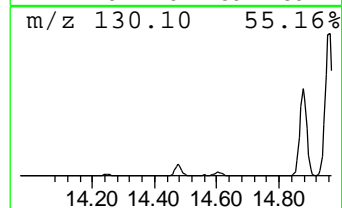
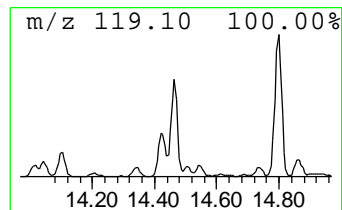
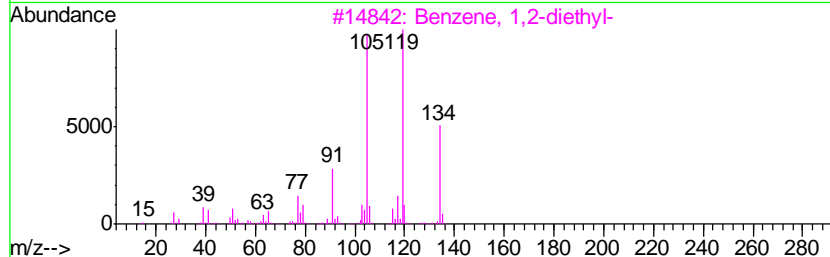
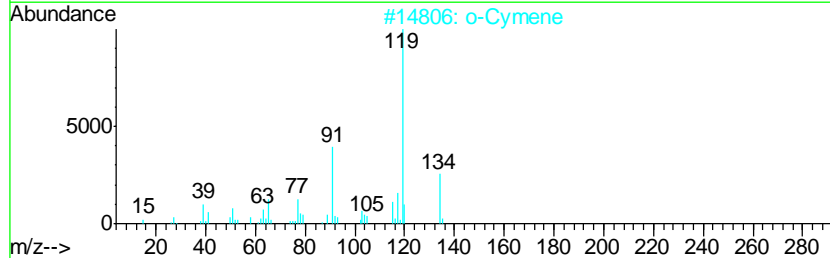
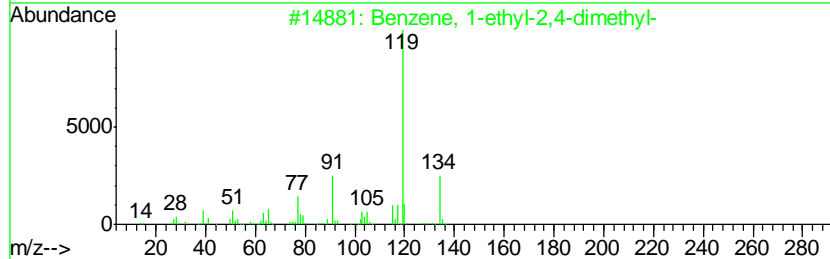
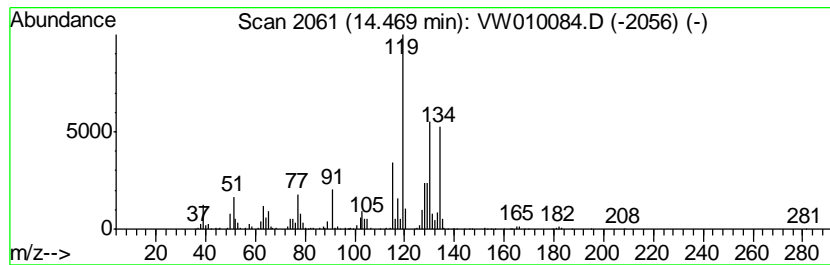
Quant Method : Z:\VOASRV\HPCHEM1\MSVOA_W\METHOD\SOM2WLM041519S.M
 Quant Title : VOC Analysis

TIC Library : C:\DATABASE\NIST11.L
 TIC Integration Parameters: LSCINT.P

 Peak Number 12 Benzene, 2-ethyl-1,4-dimethyl- Concentration Rank 20

R.T.	EstConc	Area	Relative to ISTD	R.T.
14.47	4.42 ug/L	403723	1,4-Dichlorobenzene-d4	13.56

Hit#	of	Tentative ID	MW	MolForm	CAS#	Qual
1	5	Benzene, 1-ethyl-2,4-dimethyl-	134	C10H14	000874-41-9	55
2		o-Cymene	134	C10H14	000527-84-4	53
3		Benzene, 1,2-diethyl-	134	C10H14	000135-01-3	53
4		Benzene, 2-ethyl-1,4-dimethyl-	134	C10H14	001758-88-9	53
5		Benzene, 1,4-diethyl-	134	C10H14	000105-05-5	49



Data Path : Z:\voasrv\HPCHEM1\MSVOA W\Data\VW042219\
 Data File : VW010084.D
 Acq On : 22 Apr 2019 16:06
 Operator : SY/VA
 Sample : K2455-12
 Misc : 5.04G/10ML/MSVOA W/SOIL
 ALS Vial : 1 Sample Multiplier: 1

Instrument :
 MSVOA_W
 ClientSampled :
 GAHR2

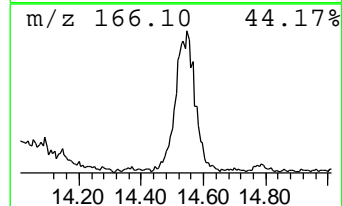
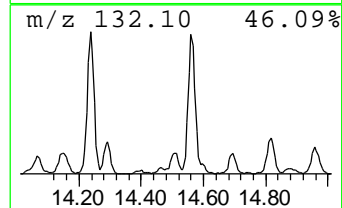
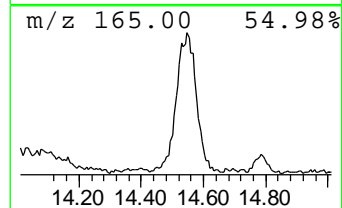
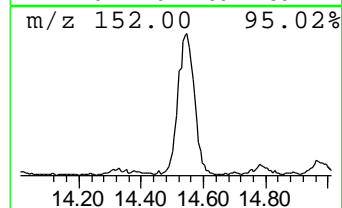
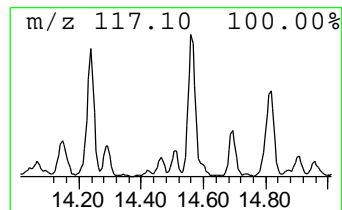
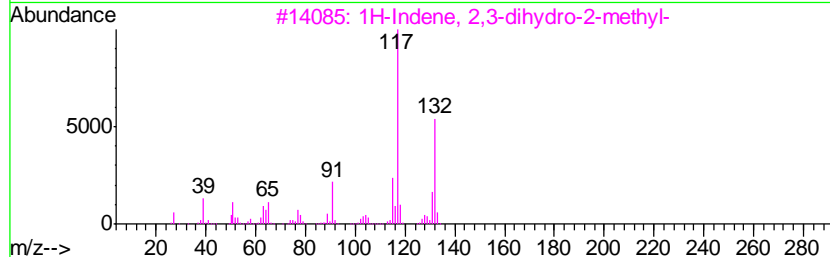
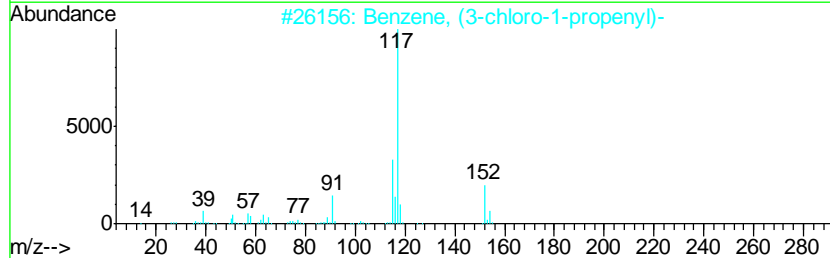
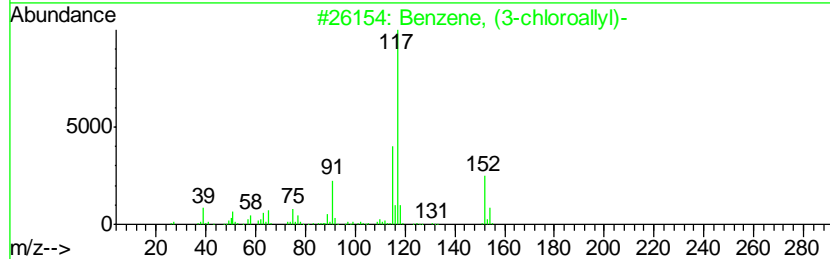
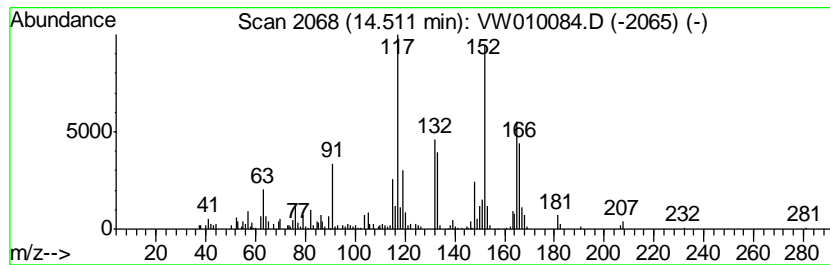
Quant Method : Z:\VOASRV\HPCHEM1\MSVOA_W\METHOD\SOM2WLM041519S.M
 Quant Title : VOC Analysis

TIC Library : C:\DATABASE\NIST11.L
 TIC Integration Parameters: LSCINT.P

 Peak Number 13 unknown-01 Concentration Rank 35

R.T.	EstConc	Area	Relative to ISTD	R.T.
14.51	1.42 ug/L	129401	1,4-Dichlorobenzene-d4	13.56

Hit#	of	Tentative ID	MW	MolForm	CAS#	Qual
1	5	Benzene, (3-chloroallyl)-	152	C9H9Cl	006268-37-7	38
2		Benzene, (3-chloro-1-propenyl)-	152	C9H9Cl	002687-12-9	38
3		1H-Indene, 2,3-dihydro-2-methyl-	132	C10H12	000824-63-5	35
4		Benzene, 1-(chloromethyl)-4-ethe...	152	C9H9Cl	001592-20-7	30
5		Benzene, 1-(chloromethyl)-4-ethe...	152	C9H9Cl	001592-20-7	30



Data Path : Z:\voasrv\HPCHEM1\MSVOA W\Data\VW042219\
 Data File : VW010084.D
 Acq On : 22 Apr 2019 16:06
 Operator : SY/VA
 Sample : K2455-12
 Misc : 5.04G/10ML/MSVOA W/SOIL
 ALS Vial : 1 Sample Multiplier: 1

Instrument :
 MSVOA_W
 ClientSampled :
 GAHR2

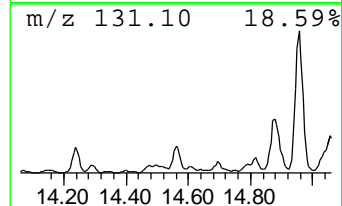
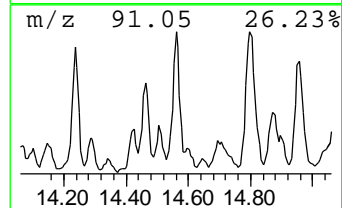
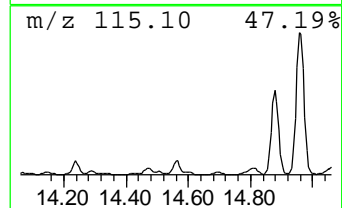
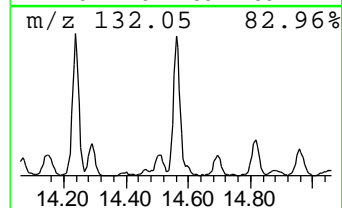
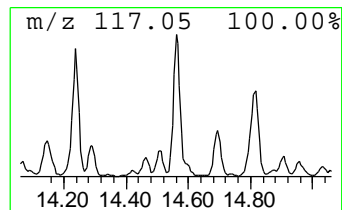
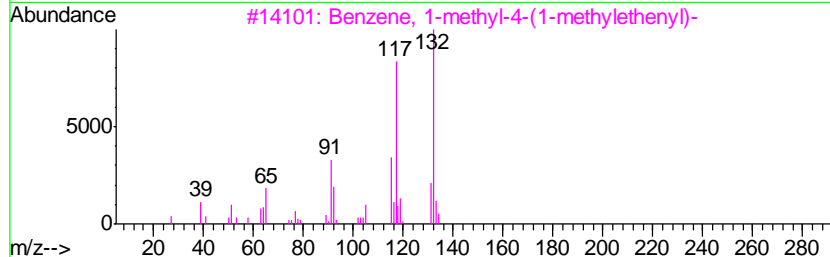
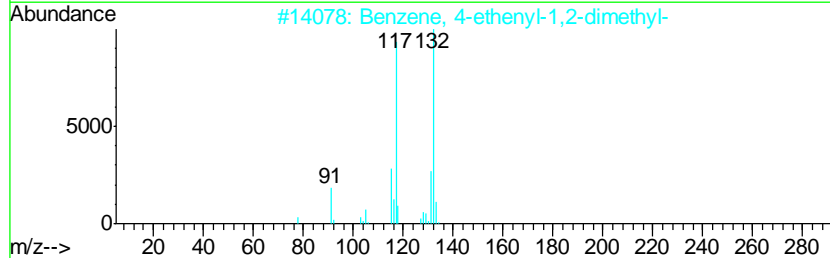
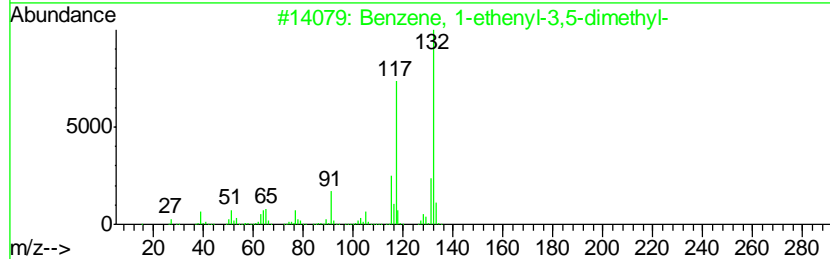
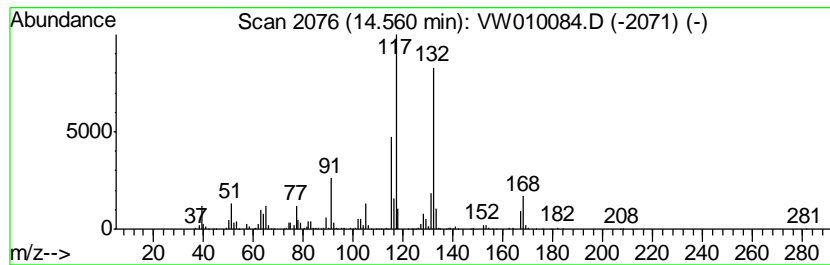
Quant Method : Z:\VOASRV\HPCHEM1\MSVOA_W\METHOD\SOM2WLM041519S.M
 Quant Title : VOC Analysis

TIC Library : C:\DATABASE\NIST11.L
 TIC Integration Parameters: LSCINT.P

 Peak Number 14 Benzene, 1-ethenyl-3,5-dime... Concentration Rank 11

R.T.	EstConc	Area	Relative to ISTD	R.T.
14.56	7.26 ug/L	662739	1,4-Dichlorobenzene-d4	13.56

Hit#	of	Tentative ID	MW	MolForm	CAS#	Qual
1	5	Benzene, 1-ethenyl-3,5-dimethyl-	132	C10H12	005379-20-4	95
2		Benzene, 4-ethenyl-1,2-dimethyl-	132	C10H12	027831-13-6	95
3		Benzene, 1-methyl-4-(1-methyleth...	132	C10H12	001195-32-0	93
4		Benzene, 1-methyl-4-(1-methyleth...	132	C10H12	001195-32-0	93
5		(E)-1-Phenyl-1-butene	132	C10H12	001005-64-7	93



Data Path : Z:\voasrv\HPCHEM1\MSVOA W\Data\VW042219\
 Data File : VW010084.D
 Acq On : 22 Apr 2019 16:06
 Operator : SY/VA
 Sample : K2455-12
 Misc : 5.04G/10ML/MSVOA W/SOIL
 ALS Vial : 1 Sample Multiplier: 1

Instrument :
 MSVOA_W
 ClientSampleID :
 GAHR2

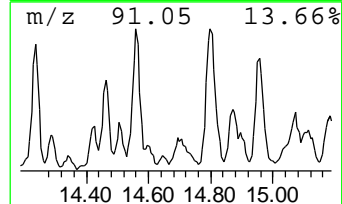
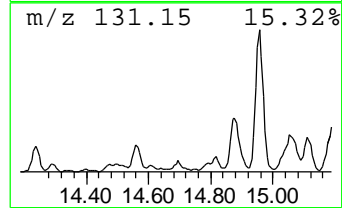
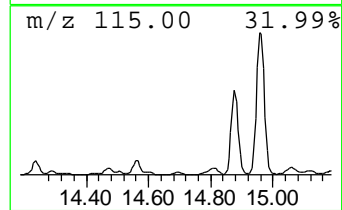
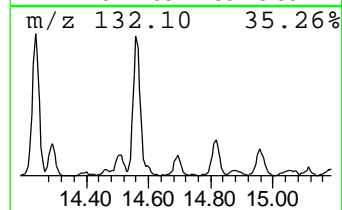
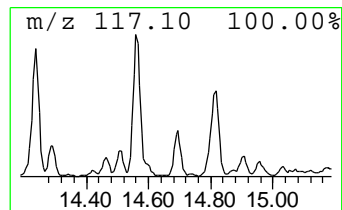
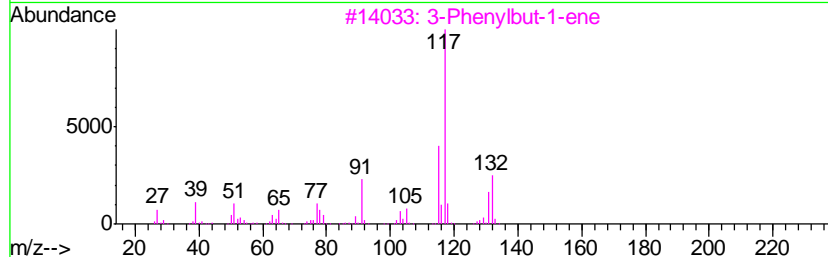
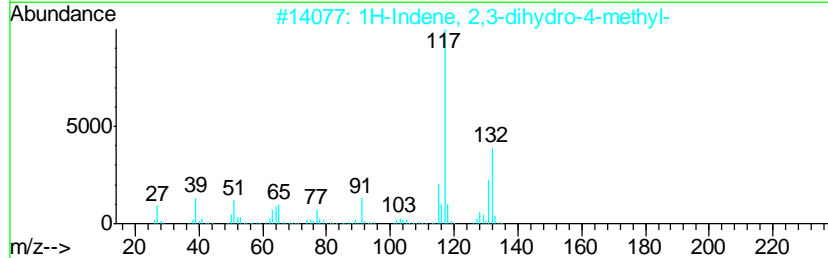
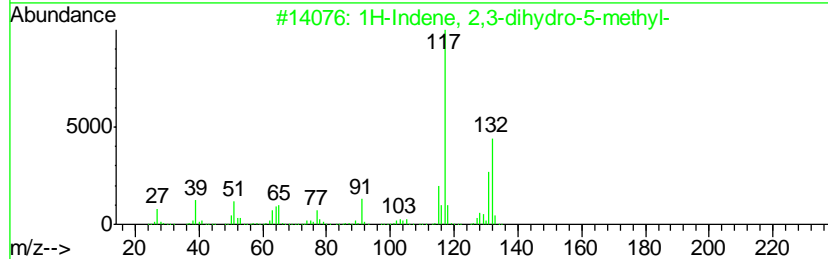
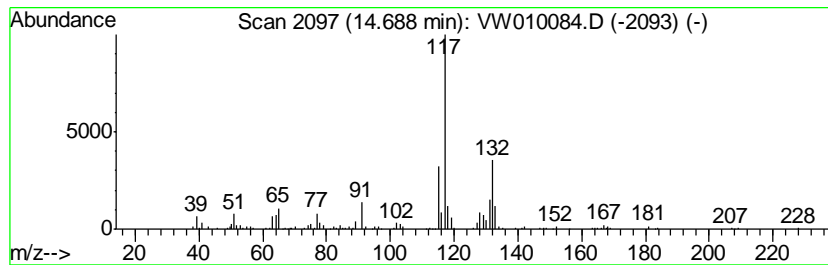
Quant Method : Z:\VOASRV\HPCHEM1\MSVOA_W\METHOD\SOM2WLM041519S.M
 Quant Title : VOC Analysis

TIC Library : C:\DATABASE\NIST11.L
 TIC Integration Parameters: LSCINT.P

 Peak Number 15 1H-Indene, 2,3-dihydro-5-me... Concentration Rank 33

R.T.	EstConc	Area	Relative to ISTD	R.T.
14.69	1.51 ug/L	137670	1,4-Dichlorobenzene-d4	13.56

Hit#	of	Tentative ID	MW	MolForm	CAS#	Qual
1	5	1H-Indene, 2,3-dihydro-5-methyl-	132	C10H12	000874-35-1	90
2		1H-Indene, 2,3-dihydro-4-methyl-	132	C10H12	000824-22-6	87
3		3-Phenylbut-1-ene	132	C10H12	000934-10-1	87
4		Benzene, 1-methyl-2-(2-propenyl)-	132	C10H12	001587-04-8	83
5		Benzene, 2-butenyl-	132	C10H12	001560-06-1	80



Data Path : Z:\voasrv\HPCHEM1\MSVOA W\Data\VW042219\
 Data File : VW010084.D
 Acq On : 22 Apr 2019 16:06
 Operator : SY/VA
 Sample : K2455-12
 Misc : 5.04G/10ML/MSVOA W/SOIL
 ALS Vial : 1 Sample Multiplier: 1

Instrument :
 MSVOA_W
 ClientSampled :
 GAHR2

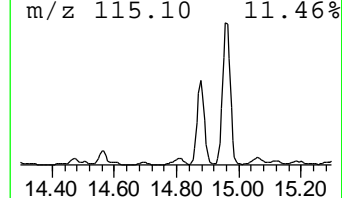
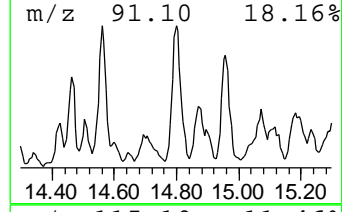
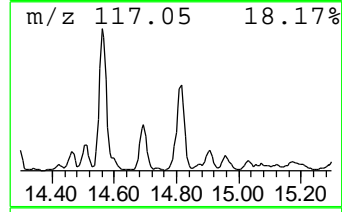
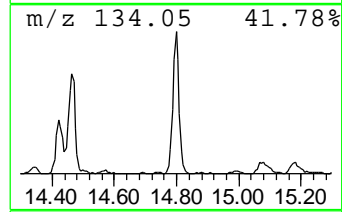
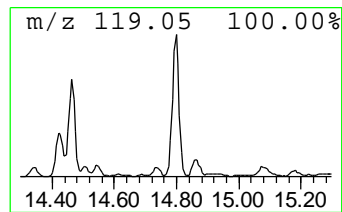
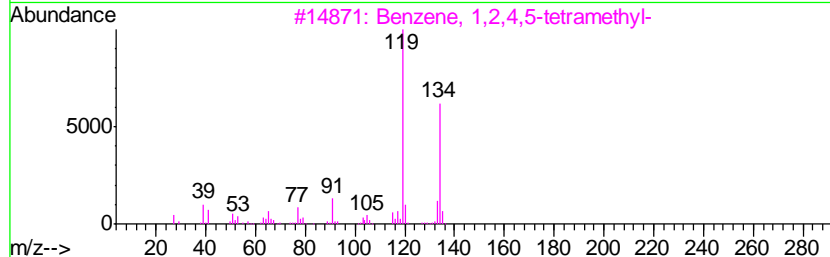
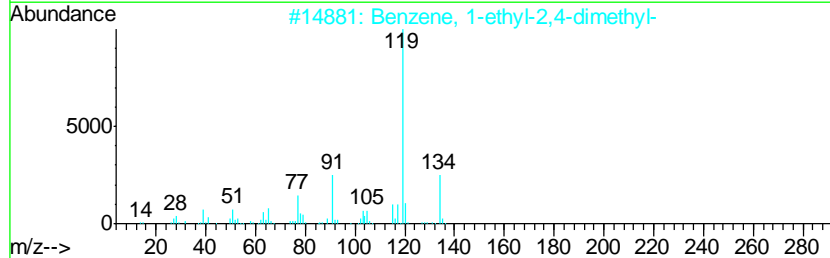
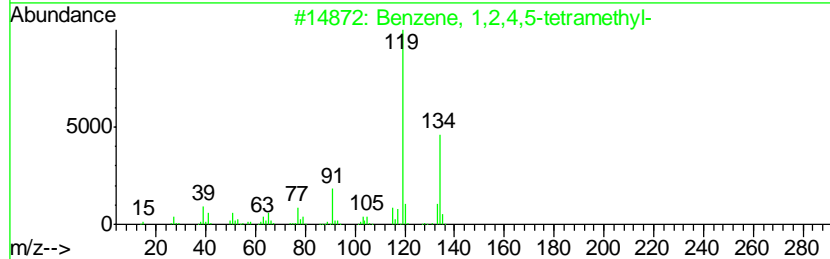
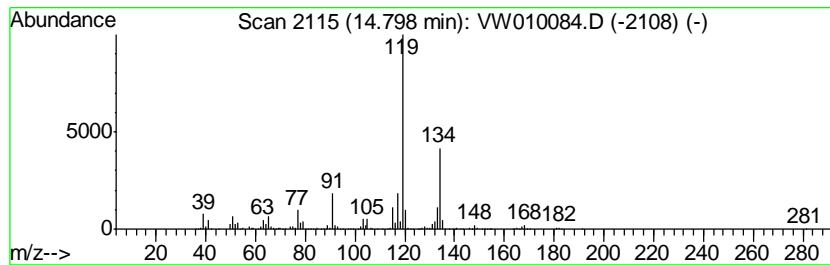
Quant Method : Z:\VOASRV\HPCHEM1\MSVOA_W\METHOD\SOM2WLM041519S.M
 Quant Title : VOC Analysis

TIC Library : C:\DATABASE\NIST11.L
 TIC Integration Parameters: LSCINT.P

 Peak Number 16 Benzene, 1,2,4,5-tetramethyl- Concentration Rank 10

R.T.	EstConc	Area	Relative to ISTD	R.T.
14.80	7.69 ug/L	702098	1,4-Dichlorobenzene-d4	13.56

Hit#	of	Tentative ID	MW	MolForm	CAS#	Qual
1	5	Benzene, 1,2,4,5-tetramethyl-	134	C10H14	000095-93-2	95
2		Benzene, 1-ethyl-2,4-dimethyl-	134	C10H14	000874-41-9	93
3		Benzene, 1,2,4,5-tetramethyl-	134	C10H14	000095-93-2	91
4		Benzene, 1-ethyl-2,3-dimethyl-	134	C10H14	000933-98-2	91
5		Benzene, 1,2,4,5-tetramethyl-	134	C10H14	000095-93-2	91



Data Path : Z:\voasrv\HPCHEM1\MSVOA W\Data\VW042219\
 Data File : VW010084.D
 Acq On : 22 Apr 2019 16:06
 Operator : SY/VA
 Sample : K2455-12
 Misc : 5.04G/10ML/MSVOA W/SOIL
 ALS Vial : 1 Sample Multiplier: 1

Instrument :
 MSVOA_W
 ClientSampleId :
 GAHR2

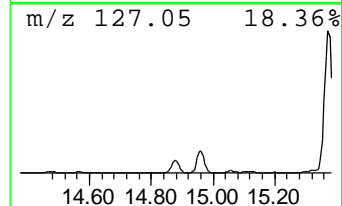
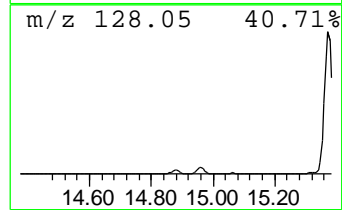
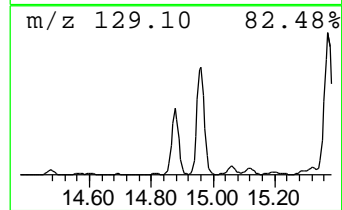
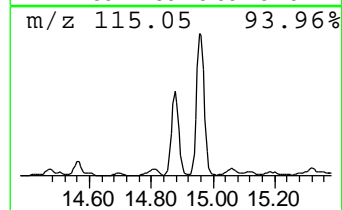
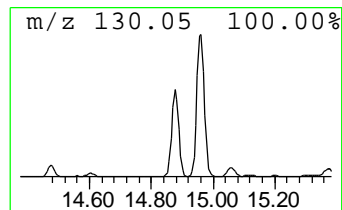
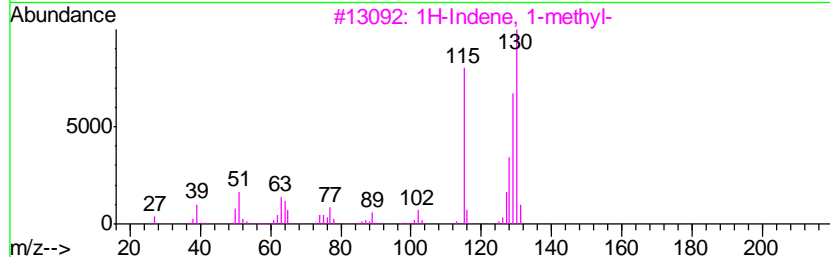
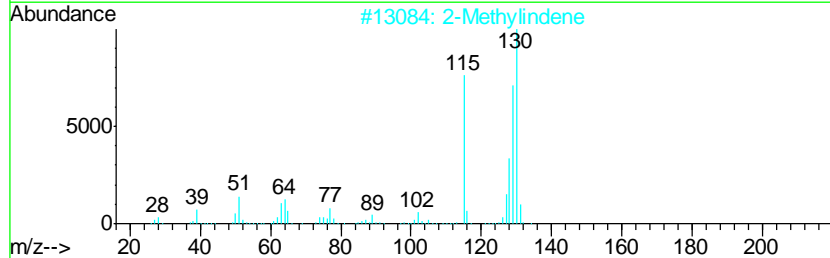
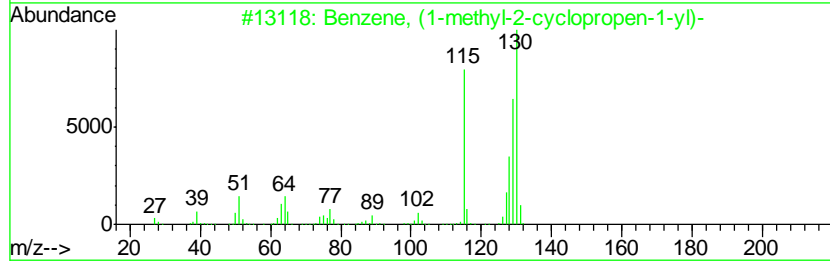
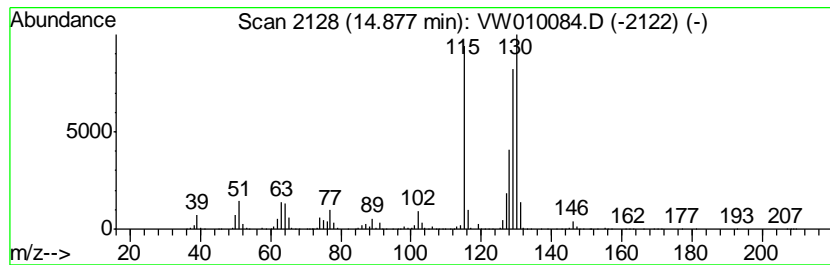
Quant Method : Z:\VOASRV\HPCHEM1\MSVOA_W\METHOD\SOM2WLM041519S.M
 Quant Title : VOC Analysis

TIC Library : C:\DATABASE\NIST11.L
 TIC Integration Parameters: LSCINT.P

 Peak Number 17 Benzene, (1-methyl-2-cyclop... Concentration Rank 5

R.T.	EstConc	Area	Relative to ISTD	R.T.
14.88	19.53 ug/L	1783110	1,4-Dichlorobenzene-d4	13.56

Hit#	of	Tentative ID	MW	MolForm	CAS#	Qual
1	5	Benzene, (1-methyl-2-cyclopropen...	130	C10H10	065051-83-4	97
2		2-Methylindene	130	C10H10	002177-47-1	97
3		1H-Indene, 1-methyl-	130	C10H10	000767-59-9	96
4		Benzene, 1-methyl-1,2-propadienyl-	130	C10H10	022433-39-2	95
5		1H-Indene, 1-methyl-	130	C10H10	000767-59-9	95



Data Path : Z:\voasrv\HPCHEM1\MSVOA W\Data\VW042219\
 Data File : VW010084.D
 Acq On : 22 Apr 2019 16:06
 Operator : SY/VA
 Sample : K2455-12
 Misc : 5.04G/10ML/MSVOA W/SOIL
 ALS Vial : 1 Sample Multiplier: 1

Instrument :
 MSVOA_W
 ClientSampled :
 GAHR2

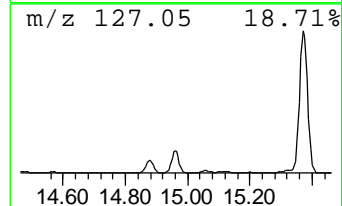
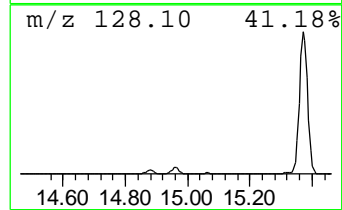
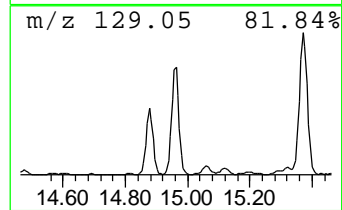
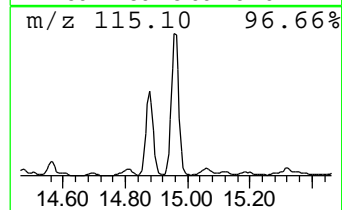
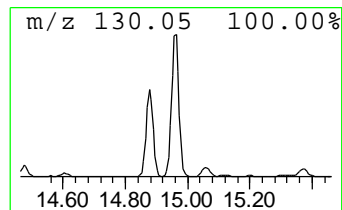
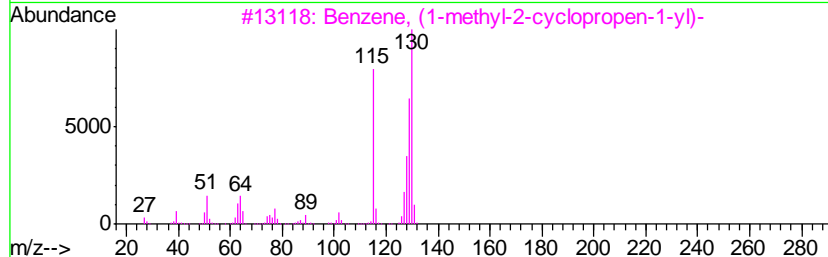
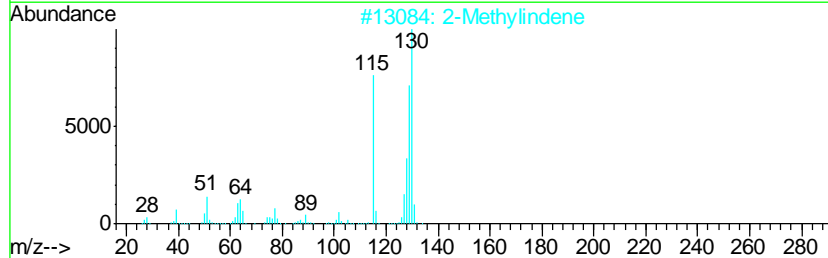
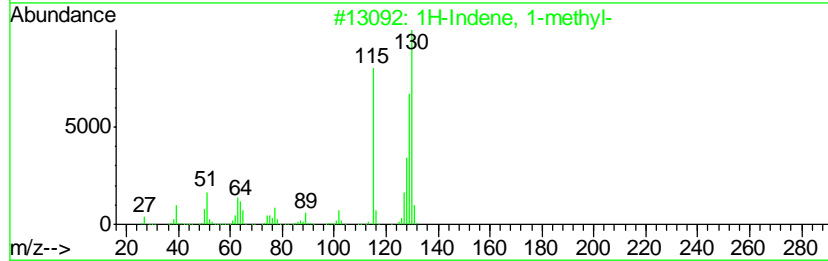
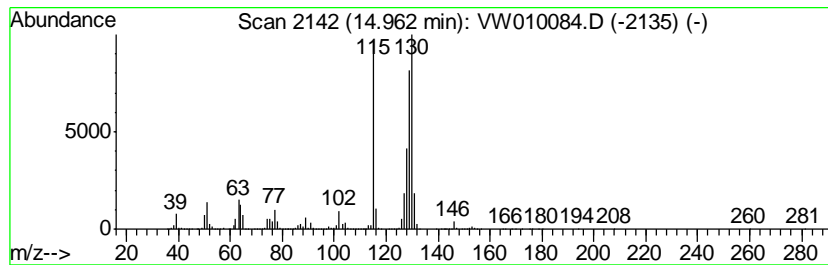
Quant Method : Z:\VOASRV\HPCHEM1\MSVOA_W\METHOD\SOM2WLM041519S.M
 Quant Title : VOC Analysis

TIC Library : C:\DATABASE\NIST11.L
 TIC Integration Parameters: LSCINT.P

 Peak Number 18 1H-Indene, 1-methyl- Concentration Rank 4

R.T.	EstConc	Area	Relative to ISTD	R.T.
14.96	35.41 ug/L	3232320	1,4-Dichlorobenzene-d4	13.56

Hit#	of	Tentative ID	MW	MolForm	CAS#	Qual
1	5	1H-Indene, 1-methyl-	130	C10H10	000767-59-9	96
2		2-Methylindene	130	C10H10	002177-47-1	96
3		Benzene, (1-methyl-2-cyclopropen...	130	C10H10	065051-83-4	95
4		Benzene, 1-methyl-1,2-propadienyl-	130	C10H10	022433-39-2	95
5		Naphthalene, 1,2-dihydro-	130	C10H10	000447-53-0	95



Data Path : Z:\voasrv\HPCHEM1\MSVOA W\Data\VW042219\
 Data File : VW010084.D
 Acq On : 22 Apr 2019 16:06
 Operator : SY/VA
 Sample : K2455-12
 Misc : 5.04G/10ML/MSVOA W/SOIL
 ALS Vial : 1 Sample Multiplier: 1

Instrument :
 MSVOA_W
 ClientSampled :
 GAHR2

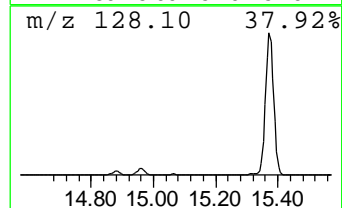
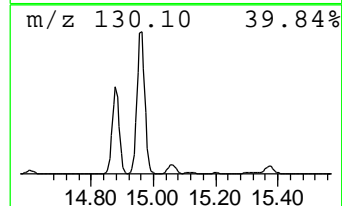
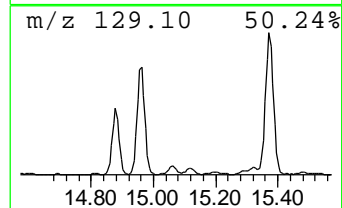
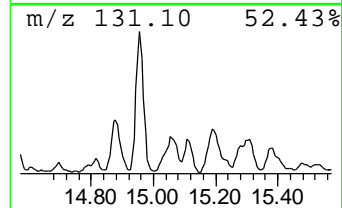
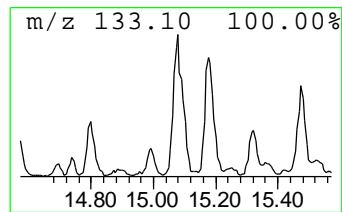
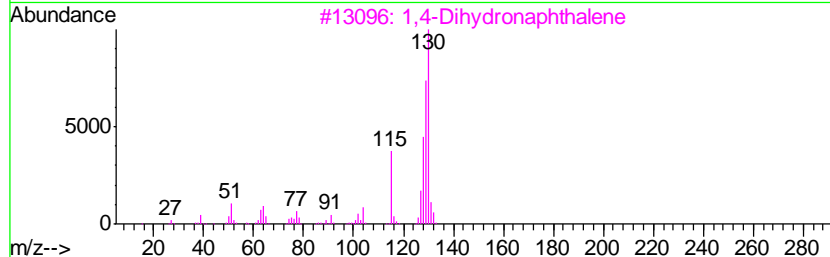
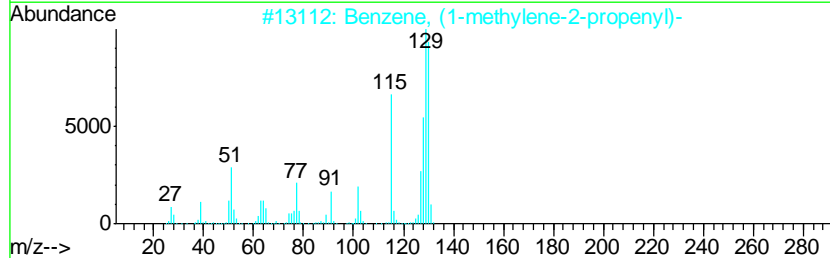
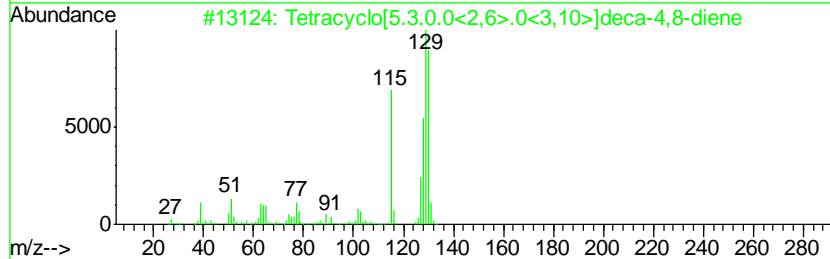
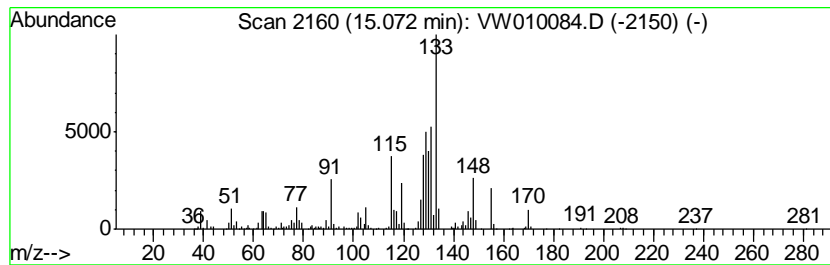
Quant Method : Z:\VOASRV\HPCHEM1\MSVOA_W\METHOD\SOM2WLM041519S.M
 Quant Title : VOC Analysis

TIC Library : C:\DATABASE\NIST11.L
 TIC Integration Parameters: LSCINT.P

 Peak Number 19 Tetracyclo[5.3.0.0<2,6>.0<3... Concentration Rank 17

R.T.	EstConc	Area	Relative to ISTD	R.T.
15.07	5.57 ug/L	508748	1,4-Dichlorobenzene-d4	13.56

Hit#	of	Tentative ID	MW	MolForm	CAS#	Qual
1	5	Tetracyclo[5.3.0.0<2,6>.0<3,10>]...	130	C10H10	034324-40-8	70
2		Benzene, (1-methylene-2-propenyl)-	130	C10H10	002288-18-8	47
3		1,4-Dihydronaphthalene	130	C10H10	000612-17-9	42
4		1,4-Dihydronaphthalene	130	C10H10	000612-17-9	38
5		Cycloprop[alindene, 1,1a,6,6a-te...	130	C10H10	015677-15-3	38



Data Path : Z:\voasrv\HPCHEM1\MSVOA W\Data\VW042219\
 Data File : VW010084.D
 Acq On : 22 Apr 2019 16:06
 Operator : SY/VA
 Sample : K2455-12
 Misc : 5.04G/10ML/MSVOA W/SOIL
 ALS Vial : 1 Sample Multiplier: 1

Instrument :
 MSVOA_W
 ClientSampleID :
 GAHR2

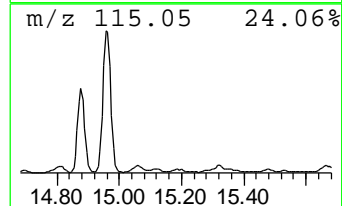
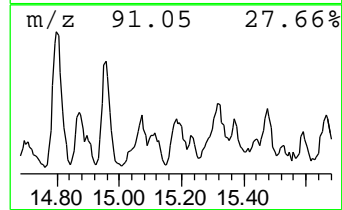
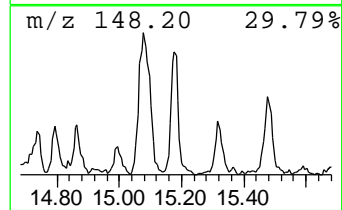
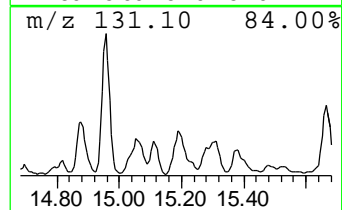
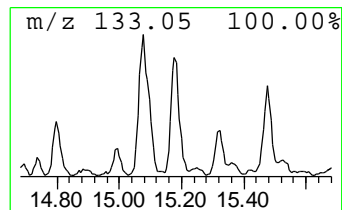
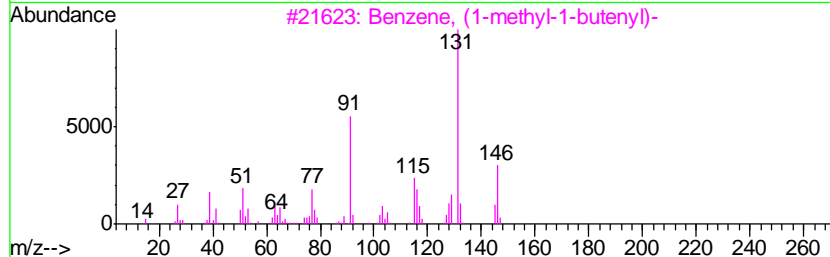
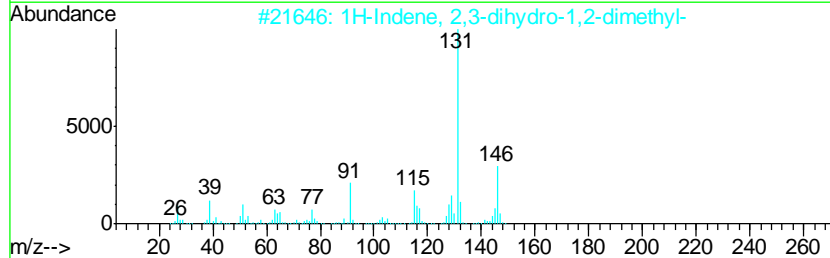
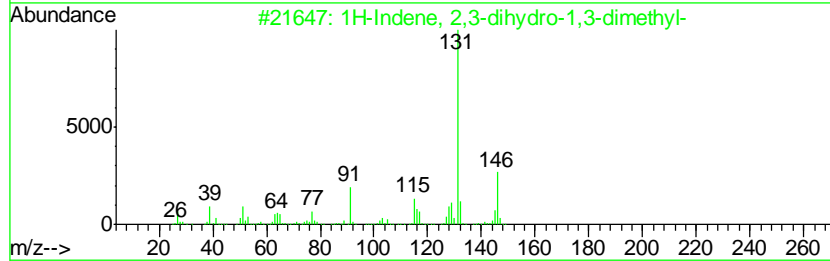
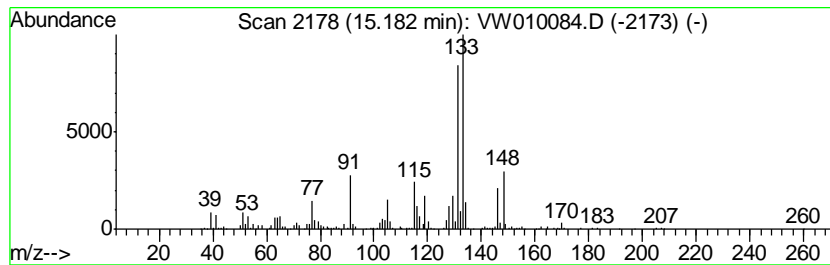
Quant Method : Z:\VOASRV\HPCHEM1\MSVOA_W\METHOD\SOM2WLM041519S.M
 Quant Title : VOC Analysis

TIC Library : C:\DATABASE\NIST11.L
 TIC Integration Parameters: LSCINT.P

 Peak Number 21 1H-Indene, 2,3-dihydro-1,3-... Concentration Rank 23

R.T.	EstConc	Area	Relative to ISTD	R.T.
15.18	3.69 ug/L	336657	1,4-Dichlorobenzene-d4	13.56

Hit#	of	Tentative ID	MW	MolForm	CAS#	Qual
1	5	1H-Indene, 2,3-dihydro-1,3-dimet...	146	C11H14	004175-53-5	64
2		1H-Indene, 2,3-dihydro-1,2-dimet...	146	C11H14	017057-82-8	50
3		Benzene, (1-methyl-1-butenyl)-	146	C11H14	053172-84-2	50
4		Benzene, 1-ethyl-4-(1-methylethyl)-	148	C11H16	004218-48-8	46
5		Benzene, (1,1-dimethyl-2-propenyl)-	146	C11H14	018321-36-3	45



Data Path : Z:\voasrv\HPCHEM1\MSVOA W\Data\VW042219\
 Data File : VW010084.D
 Acq On : 22 Apr 2019 16:06
 Operator : SY/VA
 Sample : K2455-12
 Misc : 5.04G/10ML/MSVOA W/SOIL
 ALS Vial : 1 Sample Multiplier: 1

Instrument :
 MSVOA_W
 ClientSampled :
 GAHR2

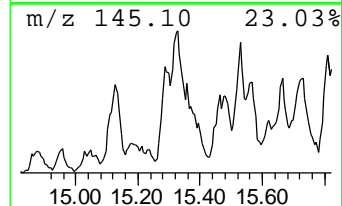
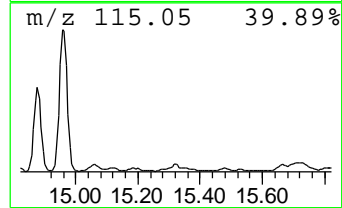
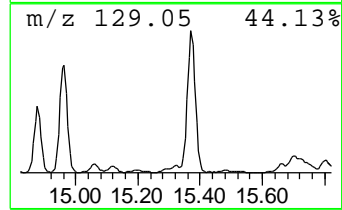
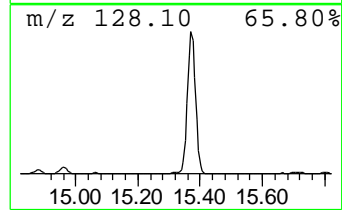
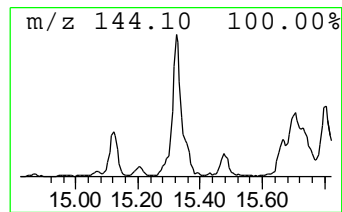
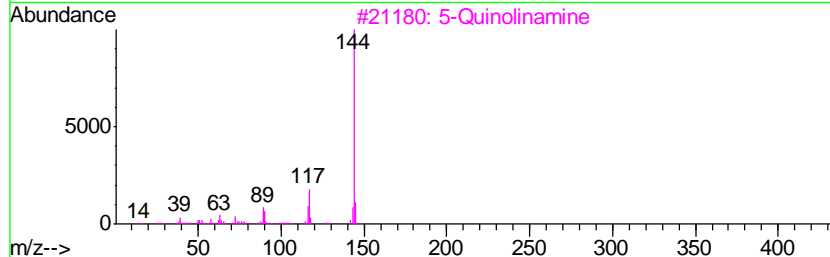
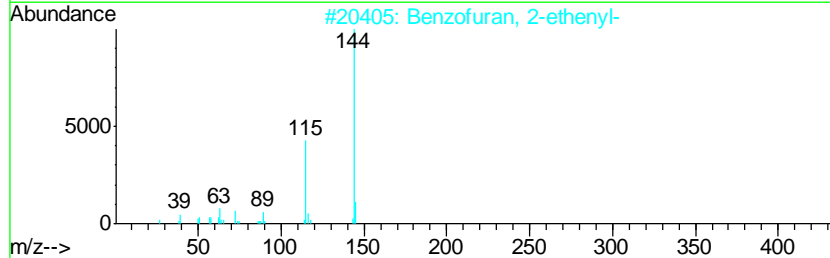
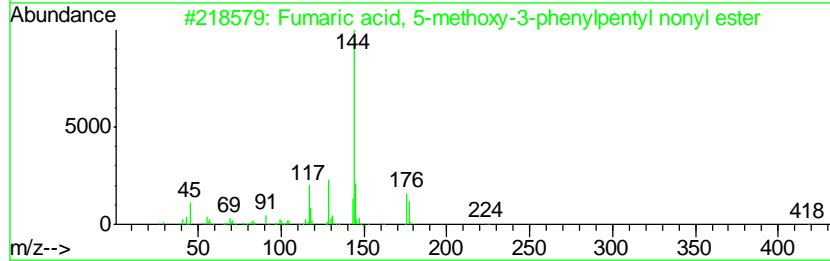
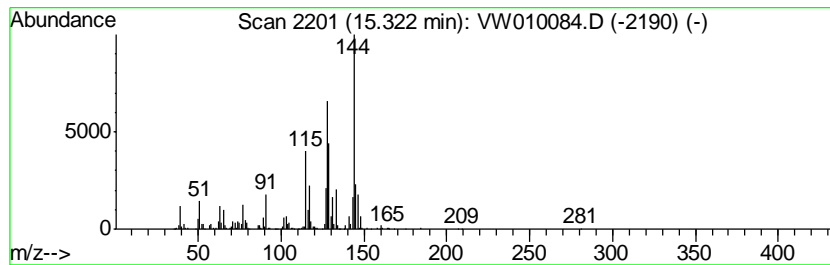
Quant Method : Z:\VOASRV\HPCHEM1\MSVOA_W\METHOD\SOM2WLM041519S.M
 Quant Title : VOC Analysis

TIC Library : C:\DATABASE\NIST11.L
 TIC Integration Parameters: LSCINT.P

 Peak Number 22 unknown-02 Concentration Rank 14

R.T.	EstConc	Area	Relative to ISTD	R.T.
15.32	6.48 ug/L	591604	1,4-Dichlorobenzene-d4	13.56

Hit#	of	Tentative ID	MW	MolForm	CAS#	Qual
1	5	Fumaric acid, 5-methoxy-3-phenyl...	418	C25H38O5	1000330-47-0	38
2		Benzofuran, 2-ethenyl-	144	C10H8O	007522-79-4	38
3		5-Quinolinamine	144	C9H8N2	000611-34-7	38
4		Fumaric acid, 5-methoxy-3-phenyl...	390	C23H34O5	1000329-79-3	38
5		1,6-Naphthyridine, 4-methyl-	144	C9H8N2	007675-30-1	38



Data Path : Z:\voasrv\HPCHEM1\MSVOA W\Data\VW042219\
 Data File : VW010084.D
 Acq On : 22 Apr 2019 16:06
 Operator : SY/VA
 Sample : K2455-12
 Misc : 5.04G/10ML/MSVOA W/SOIL
 ALS Vial : 1 Sample Multiplier: 1

Instrument :
 MSVOA_W
 ClientSampled :
 GAHR2

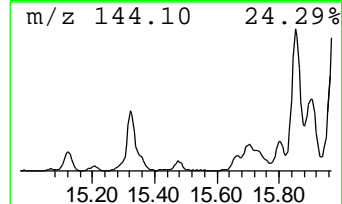
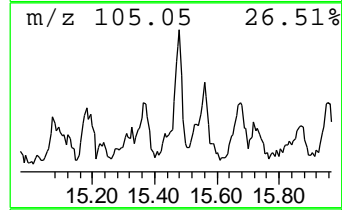
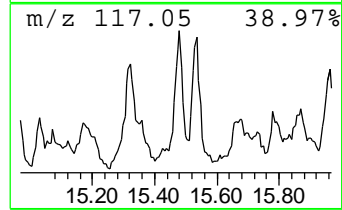
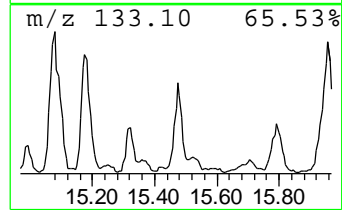
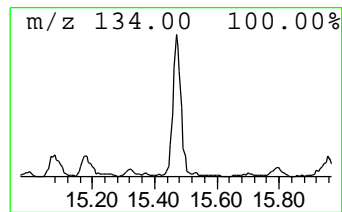
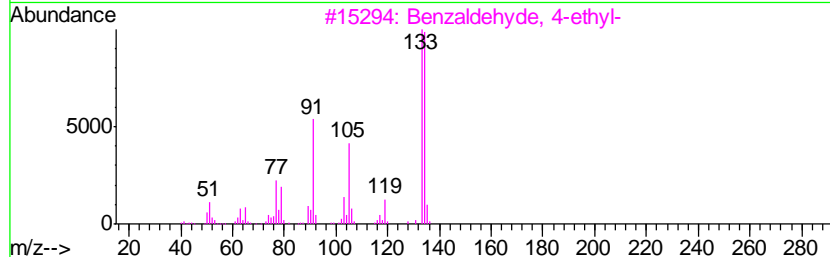
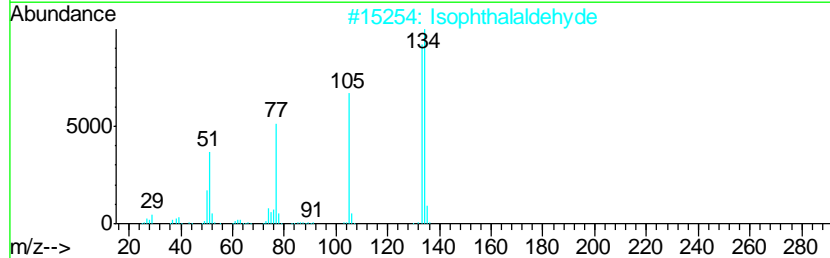
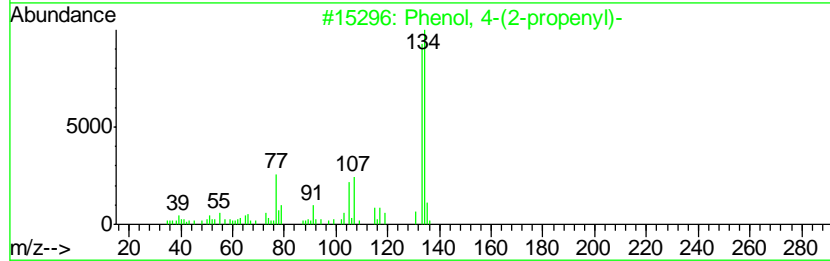
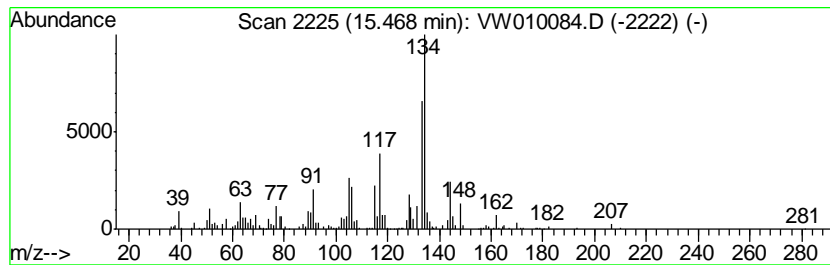
Quant Method : Z:\VOASRV\HPCHEM1\MSVOA_W\METHOD\SOM2WLM041519S.M
 Quant Title : VOC Analysis

TIC Library : C:\DATABASE\NIST11.L
 TIC Integration Parameters: LSCINT.P

 Peak Number 24 unknown-03 Concentration Rank 29

R.T.	EstConc	Area	Relative to ISTD	R.T.
15.47	2.39 ug/L	217793	1,4-Dichlorobenzene-d4	13.56

Hit#	of	Tentative ID	MW	MolForm	CAS#	Qual
1	5	Phenol, 4-(2-propenyl)-	134	C9H10O	000501-92-8	46
2		Isophthalaldehyde	134	C8H6O2	000626-19-7	45
3		Benzaldehyde, 4-ethyl-	134	C9H10O	004748-78-1	45
4		1H-Inden-5-ol, 2,3-dihydro-	134	C9H10O	001470-94-6	43
5		1,4-Benzenedicarboxaldehyde	134	C8H6O2	000623-27-8	43



Data Path : Z:\voasrv\HPCHEM1\MSVOA W\Data\VW042219\
 Data File : VW010084.D
 Acq On : 22 Apr 2019 16:06
 Operator : SY/VA
 Sample : K2455-12
 Misc : 5.04G/10ML/MSVOA W/SOIL
 ALS Vial : 1 Sample Multiplier: 1

Instrument :
 MSVOA_W
 ClientSampled :
 GAHR2

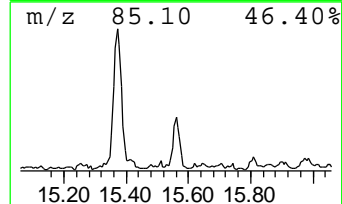
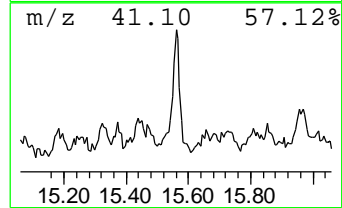
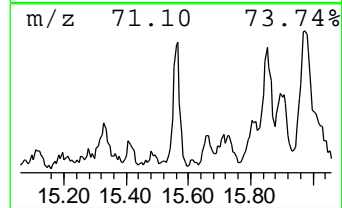
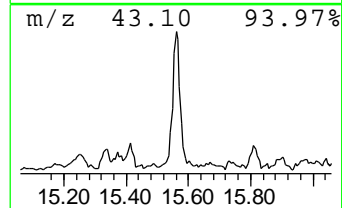
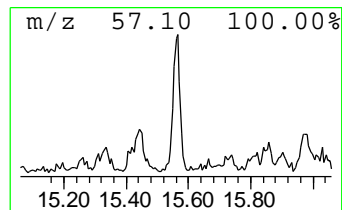
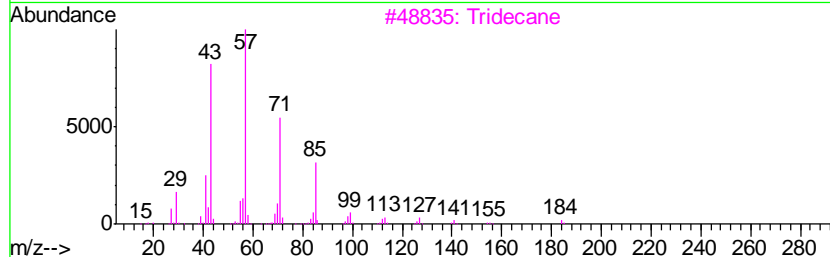
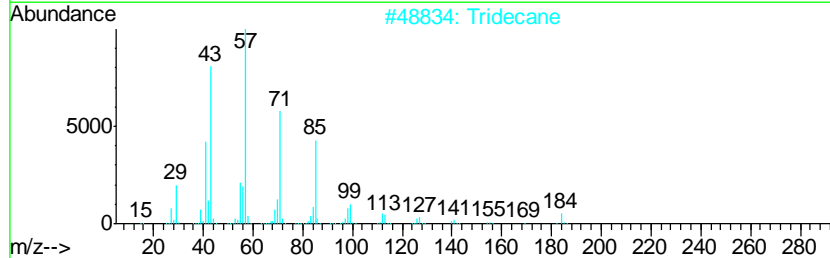
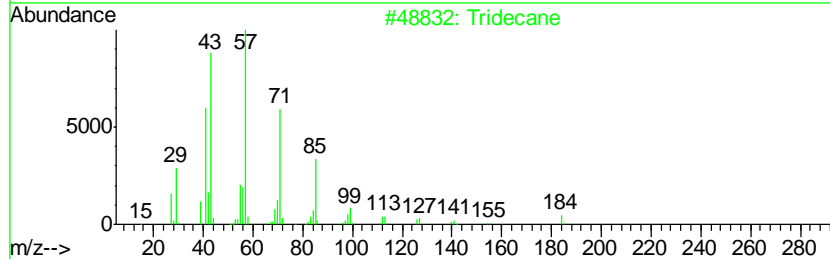
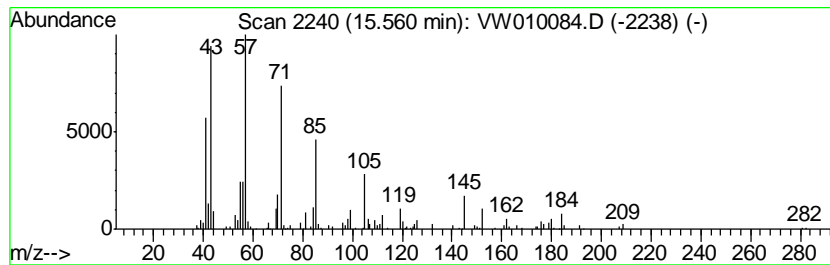
Quant Method : Z:\VOASRV\HPCHEM1\MSVOA_W\METHOD\SOM2WLM041519S.M
 Quant Title : VOC Analysis

TIC Library : C:\DATABASE\NIST11.L
 TIC Integration Parameters: LSCINT.P

 Peak Number 25 (DEL) Alkane: Straight-Chai... Concentration Rank 36

R.T.	EstConc	Area	Relative to ISTD	R.T.
15.56	1.41 ug/L	129065	1,4-Dichlorobenzene-d4	13.56

Hit#	of	Tentative ID	MW	MolForm	CAS#	Qual
1	5	Tridecane	184	C13H28	000629-50-5	89
2		Tridecane	184	C13H28	000629-50-5	89
3		Tridecane	184	C13H28	000629-50-5	76
4		Tridecane	184	C13H28	000629-50-5	76
5		Tridecane	184	C13H28	000629-50-5	76



Data Path : Z:\voasrv\HPCHEM1\MSVOA W\Data\VW042219\
 Data File : VW010084.D
 Acq On : 22 Apr 2019 16:06
 Operator : SY/VA
 Sample : K2455-12
 Misc : 5.04G/10ML/MSVOA W/SOIL
 ALS Vial : 1 Sample Multiplier: 1

Instrument :
 MSVOA_W
 ClientSampled :
 GAHR2

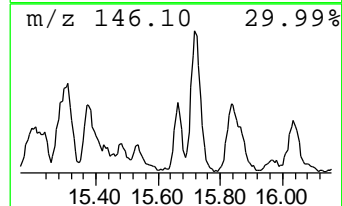
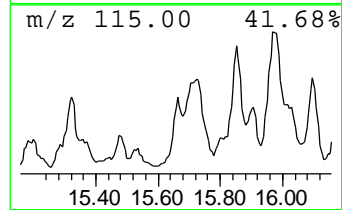
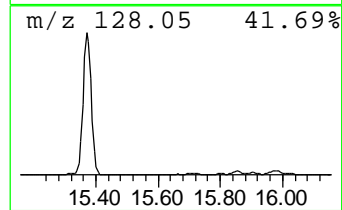
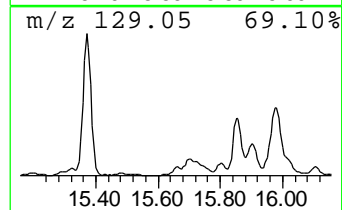
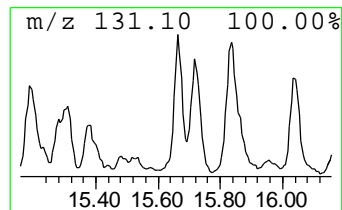
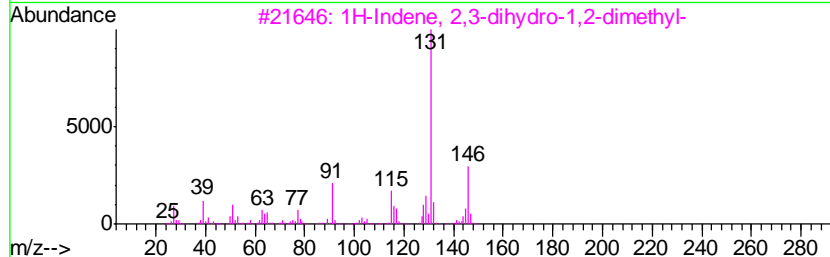
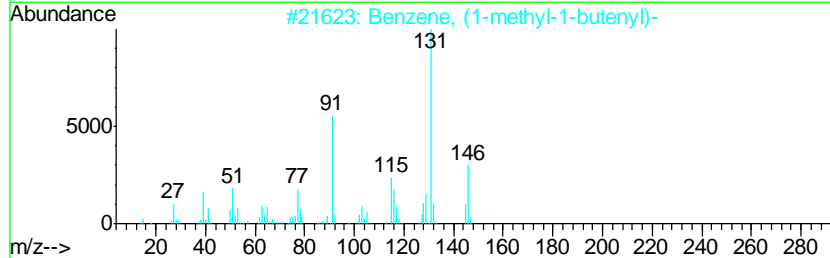
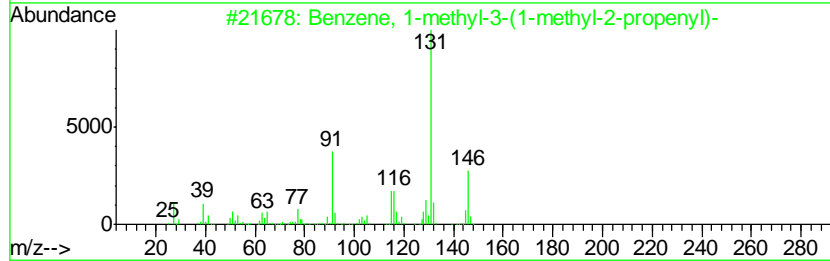
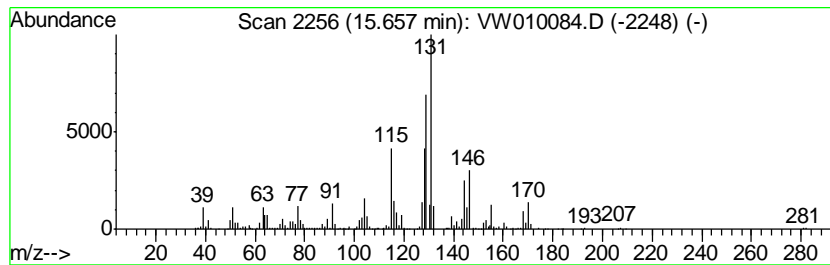
Quant Method : Z:\VOASRV\HPCHEM1\MSVOA_W\METHOD\SOM2WLM041519S.M
 Quant Title : VOC Analysis

TIC Library : C:\DATABASE\NIST11.L
 TIC Integration Parameters: LSCINT.P

 Peak Number 26 Benzene, 1-methyl-3-(1-meth... Concentration Rank 15

R.T.	EstConc	Area	Relative to ISTD	R.T.
15.66	6.30 ug/L	575308	1,4-Dichlorobenzene-d4	13.56

Hit#	of	Tentative ID	MW	MolForm	CAS#	Qual
1	5	Benzene, 1-methyl-3-(1-methyl-2-...	146	C11H14	052161-57-6	55
2		Benzene, (1-methyl-1-butenyl)-	146	C11H14	053172-84-2	49
3		1H-Indene, 2,3-dihydro-1,2-dimet...	146	C11H14	017057-82-8	49
4		(1-Methylbuta-1,3-dienyl)benzene	144	C11H12	054758-36-0	47
5		1H-Indene, 2,3-dihydro-1,6-dimet...	146	C11H14	017059-48-2	46



Data Path : Z:\voasrv\HPCHEM1\MSVOA W\Data\VW042219\
 Data File : VW010084.D
 Acq On : 22 Apr 2019 16:06
 Operator : SY/VA
 Sample : K2455-12
 Misc : 5.04G/10ML/MSVOA W/SOIL
 ALS Vial : 1 Sample Multiplier: 1

Instrument :
 MSVOA_W
 ClientSampleID :
 GAHR2

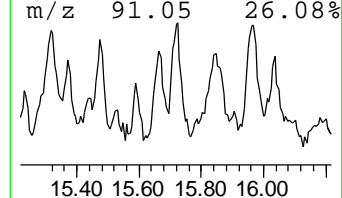
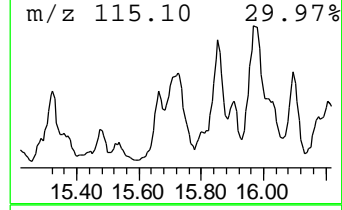
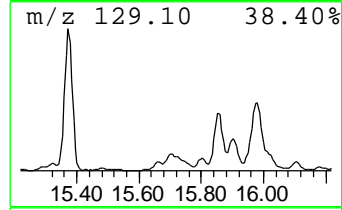
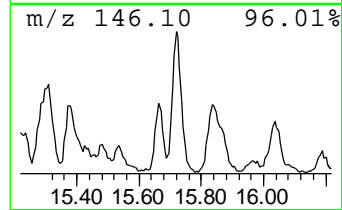
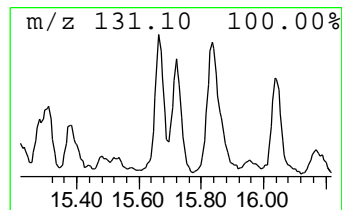
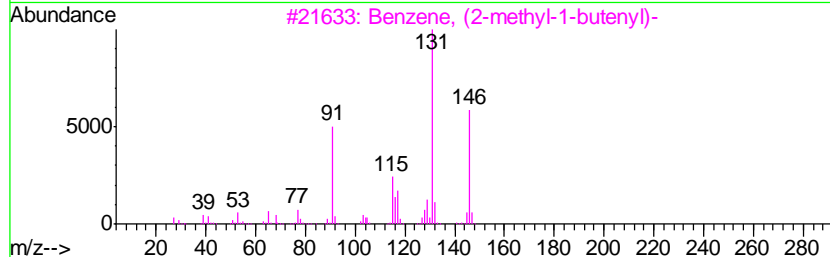
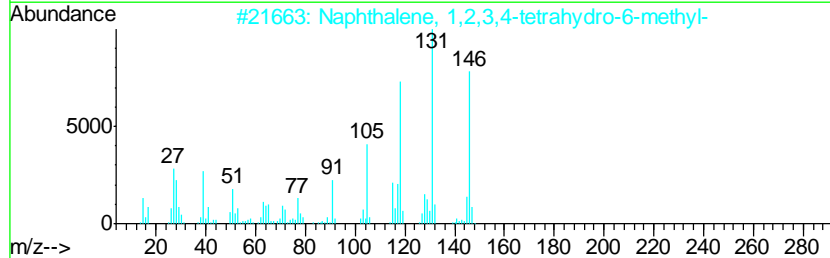
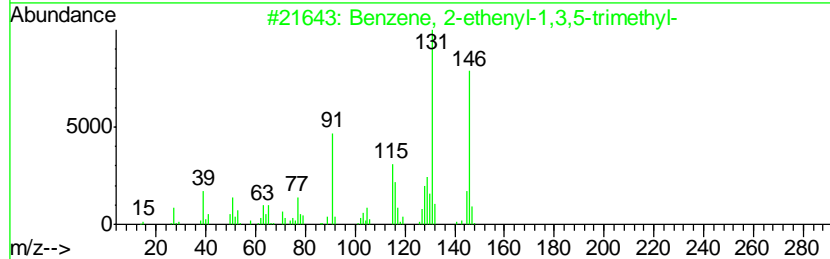
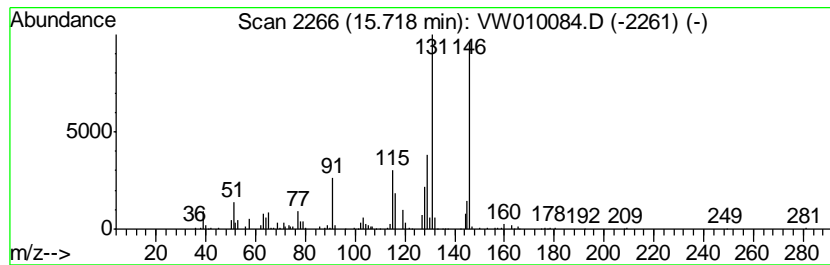
Quant Method : Z:\VOASRV\HPCHEM1\MSVOA_W\METHOD\SOM2WLM041519S.M
 Quant Title : VOC Analysis

TIC Library : C:\DATABASE\NIST11.L
 TIC Integration Parameters: LSCINT.P

 Peak Number 27 Benzene, 2-ethenyl-1,3,5-tr... Concentration Rank 13

R.T.	EstConc	Area	Relative to ISTD	R.T.
15.72	6.49 ug/L	592060	1,4-Dichlorobenzene-d4	13.56

Hit#	of	Tentative ID	MW	MolForm	CAS#	Qual
1	5	Benzene, 2-ethenyl-1,3,5-trimethyl-	146	C11H14	000769-25-5	87
2		Naphthalene, 1,2,3,4-tetrahydro-...	146	C11H14	001680-51-9	64
3		Benzene, (2-methyl-1-butenyl)-	146	C11H14	056253-64-6	53
4		Benzene, 1-methyl-4-(1-methyl-2-...	146	C11H14	097664-18-1	53
5		Benzene, 1-methyl-3-(1-methyl-2-...	146	C11H14	052161-57-6	53



Data Path : Z:\voasrv\HPCHEM1\MSVOA W\Data\VW042219\
 Data File : VW010084.D
 Acq On : 22 Apr 2019 16:06
 Operator : SY/VA
 Sample : K2455-12
 Misc : 5.04G/10ML/MSVOA W/SOIL
 ALS Vial : 1 Sample Multiplier: 1

Instrument :
 MSVOA_W
 ClientSampled :
 GAHR2

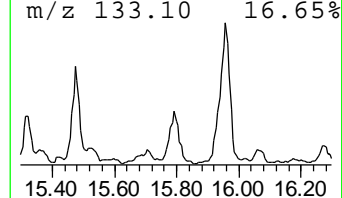
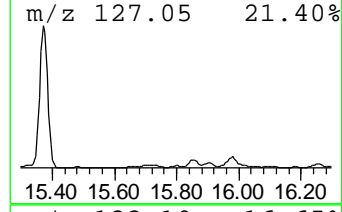
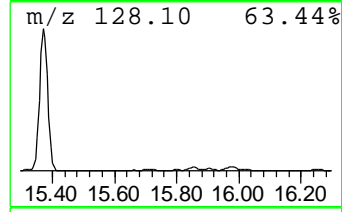
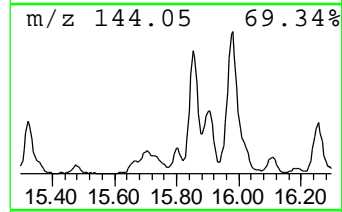
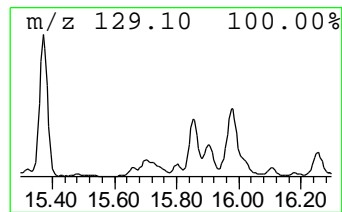
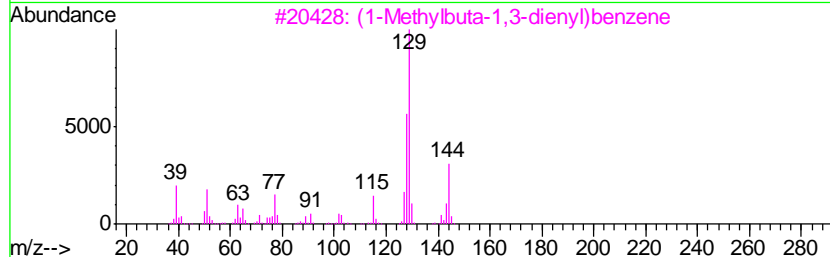
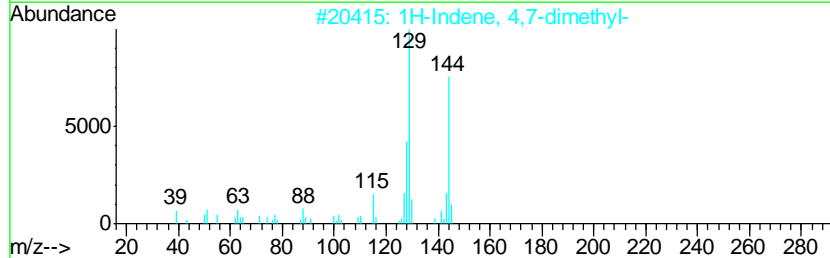
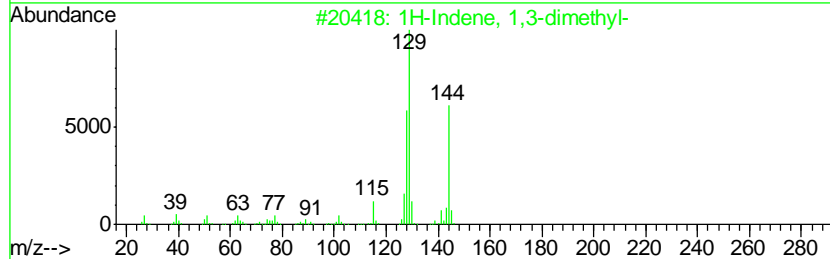
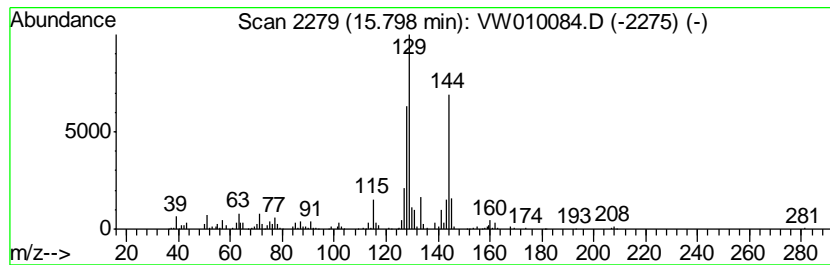
Quant Method : Z:\VOASRV\HPCHEM1\MSVOA_W\METHOD\SOM2WLM041519S.M
 Quant Title : VOC Analysis

TIC Library : C:\DATABASE\NIST11.L
 TIC Integration Parameters: LSCINT.P

 Peak Number 28 1H-Indene, 1,3-dimethyl- Concentration Rank 31

R.T.	EstConc	Area	Relative to ISTD	R.T.
15.80	2.16 ug/L	197185	1,4-Dichlorobenzene-d4	13.56

Hit#	of	Tentative ID	MW	MolForm	CAS#	Qual
1	5	1H-Indene, 1,3-dimethyl-	144	C11H12	002177-48-2	94
2		1H-Indene, 4,7-dimethyl-	144	C11H12	006974-97-6	87
3		(1-Methylbuta-1,3-dienyl)benzene	144	C11H12	054758-36-0	81
4		1H-Indene, 1,1-dimethyl-	144	C11H12	018636-55-0	74
5		(1-Methylenebut-2-enyl)benzene	144	C11H12	070588-46-4	72



Data Path : Z:\voasrv\HPCHEM1\MSVOA W\Data\VW042219\
 Data File : VW010084.D
 Acq On : 22 Apr 2019 16:06
 Operator : SY/VA
 Sample : K2455-12
 Misc : 5.04G/10ML/MSVOA W/SOIL
 ALS Vial : 1 Sample Multiplier: 1

Instrument :
 MSVOA_W
 ClientSampled :
 GAHR2

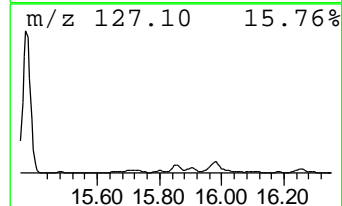
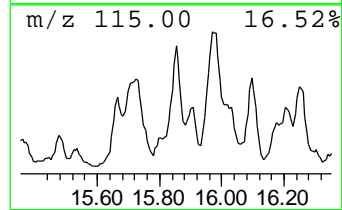
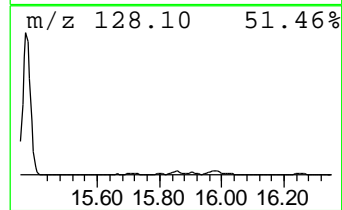
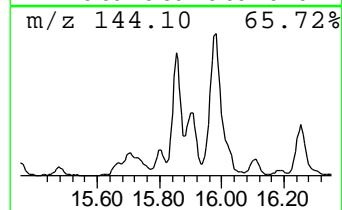
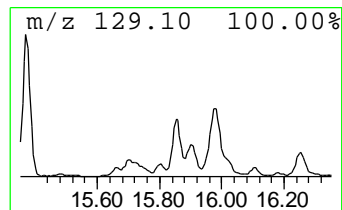
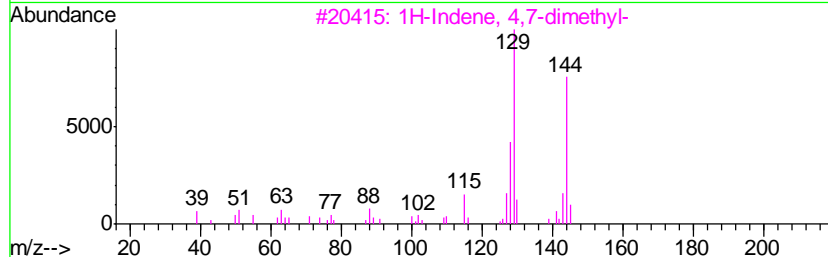
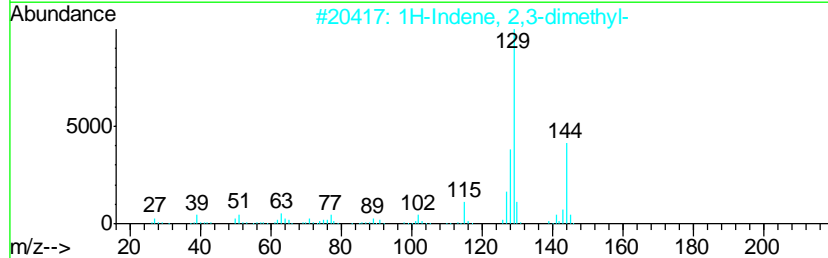
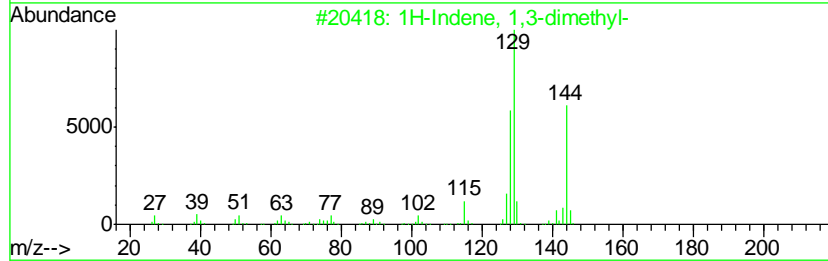
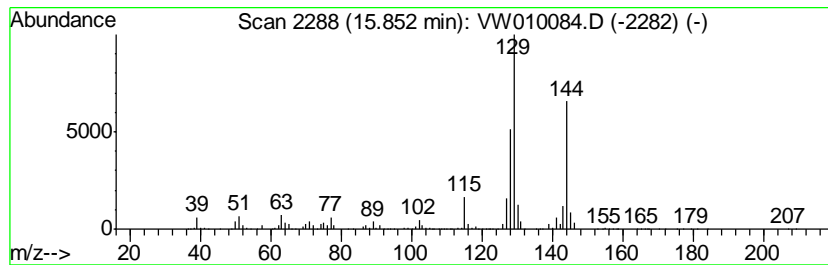
Quant Method : Z:\VOASRV\HPCHEM1\MSVOA_W\METHOD\SOM2WLM041519S.M
 Quant Title : VOC Analysis

TIC Library : C:\DATABASE\NIST11.L
 TIC Integration Parameters: LSCINT.P

 Peak Number 29 1H-Indene, 2,3-dimethyl- Concentration Rank 7

R.T.	EstConc	Area	Relative to ISTD	R.T.
15.85	10.22 ug/L	933131	1,4-Dichlorobenzene-d4	13.56

Hit#	of	Tentative ID	MW	MolForm	CAS#	Qual
1	5	1H-Indene, 1,3-dimethyl-	144	C11H12	002177-48-2	97
2		1H-Indene, 2,3-dimethyl-	144	C11H12	004773-82-4	94
3		1H-Indene, 4,7-dimethyl-	144	C11H12	006974-97-6	93
4		1H-Indene, 1,1-dimethyl-	144	C11H12	018636-55-0	90
5		1H-Indene, 1,1-dimethyl-	144	C11H12	018636-55-0	87



Data Path : Z:\voasrv\HPCHEM1\MSVOA W\Data\VW042219\
 Data File : VW010084.D
 Acq On : 22 Apr 2019 16:06
 Operator : SY/VA
 Sample : K2455-12
 Misc : 5.04G/10ML/MSVOA W/SOIL
 ALS Vial : 1 Sample Multiplier: 1

Instrument :
 MSVOA_W
 ClientSampled :
 GAHR2

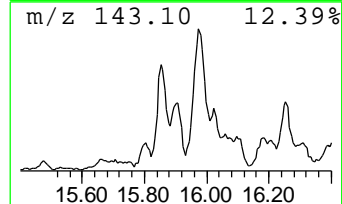
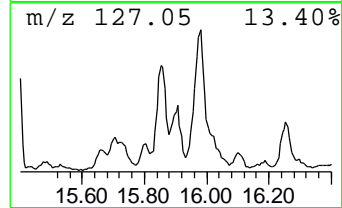
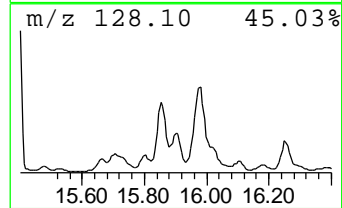
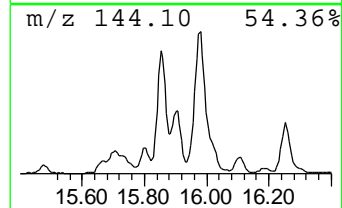
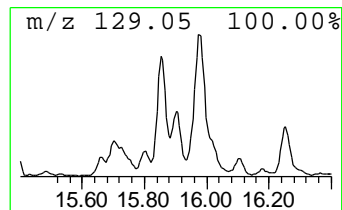
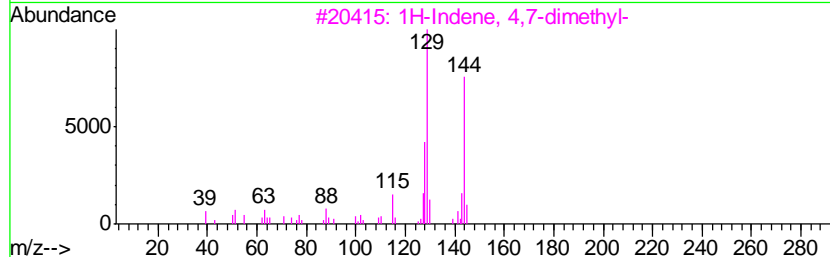
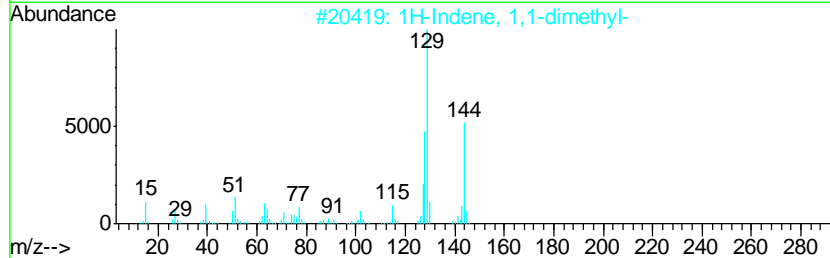
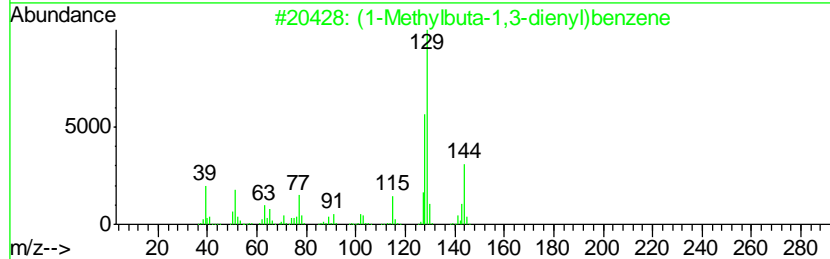
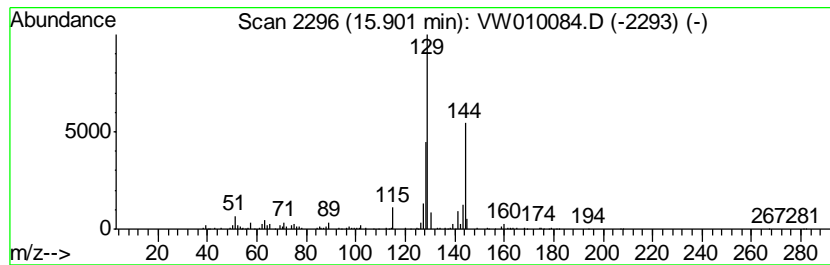
Quant Method : Z:\VOASRV\HPCHEM1\MSVOA_W\METHOD\SOM2WLM041519S.M
 Quant Title : VOC Analysis

TIC Library : C:\DATABASE\NIST11.L
 TIC Integration Parameters: LSCINT.P

 Peak Number 30 (1-Methylbuta-1,3-dienyl)be... Concentration Rank 22

R.T.	EstConc	Area	Relative to ISTD	R.T.
15.90	4.04 ug/L	369224	1,4-Dichlorobenzene-d4	13.56

Hit#	of	Tentative ID	MW	MolForm	CAS#	Qual
1	5	(1-Methylbuta-1,3-dienyl)benzene	144	C11H12	054758-36-0	91
2		1H-Indene, 1,1-dimethyl-	144	C11H12	018636-55-0	91
3		1H-Indene, 4,7-dimethyl-	144	C11H12	006974-97-6	91
4		1H-Indene, 1,3-dimethyl-	144	C11H12	002177-48-2	90
5		Naphthalene, 1,2-dihydro-4-methyl-	144	C11H12	004373-13-1	87



Data Path : Z:\voasrv\HPCHEM1\MSVOA W\Data\VW042219\
 Data File : VW010084.D
 Acq On : 22 Apr 2019 16:06
 Operator : SY/VA
 Sample : K2455-12
 Misc : 5.04G/10ML/MSVOA W/SOIL
 ALS Vial : 1 Sample Multiplier: 1

Instrument :
 MSVOA_W
 ClientSampled :
 GAHR2

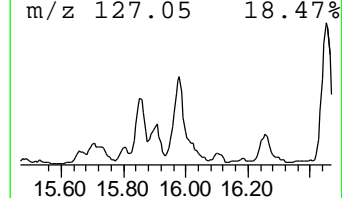
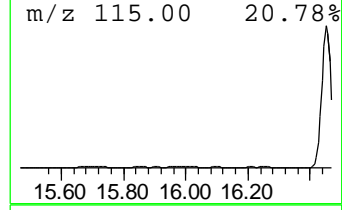
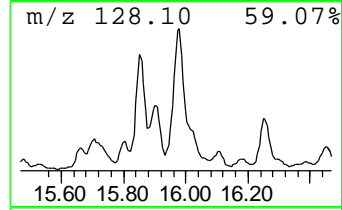
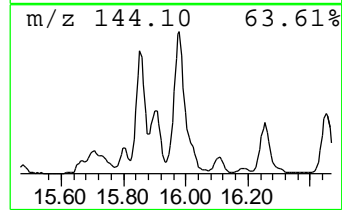
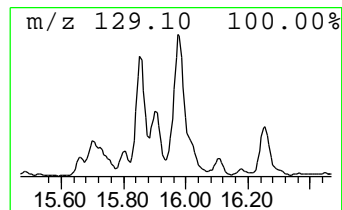
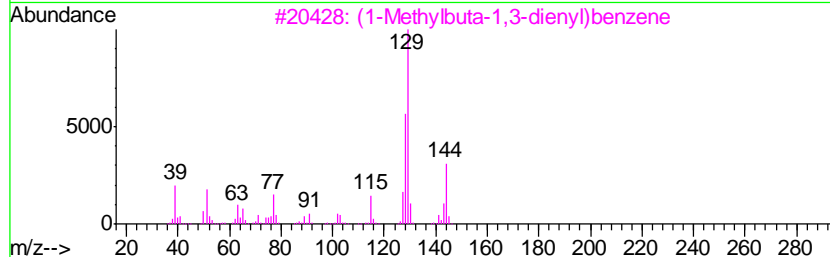
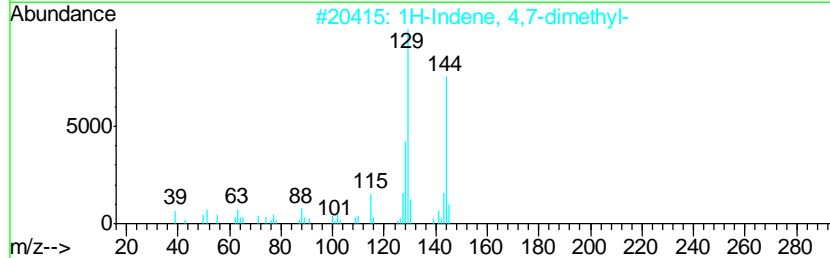
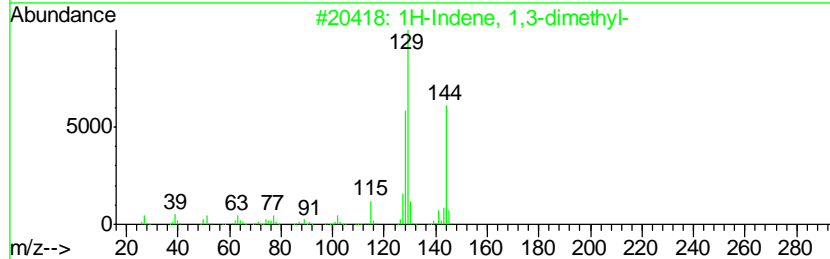
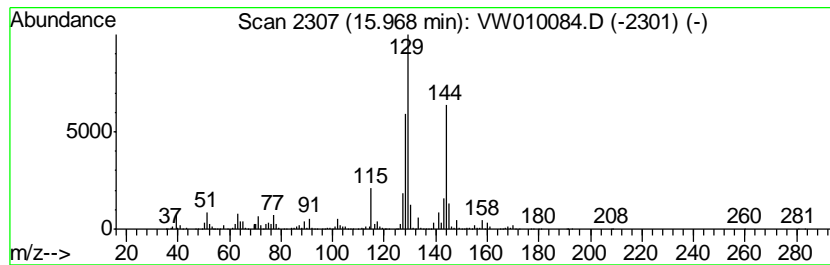
Quant Method : Z:\VOASRV\HPCHEM1\MSVOA_W\METHOD\SOM2WLM041519S.M
 Quant Title : VOC Analysis

TIC Library : C:\DATABASE\NIST11.L
 TIC Integration Parameters: LSCINT.P

 Peak Number 31 1H-Indene, 4,7-dimethyl- Concentration Rank 6

R.T.	EstConc	Area	Relative to ISTD	R.T.
15.97	18.63 ug/L	1700450	1,4-Dichlorobenzene-d4	13.56

Hit#	of	Tentative ID	MW	MolForm	CAS#	Qual
1	5	1H-Indene, 1,3-dimethyl-	144	C11H12	002177-48-2	96
2		1H-Indene, 4,7-dimethyl-	144	C11H12	006974-97-6	93
3		(1-Methylbuta-1,3-dienyl)benzene	144	C11H12	054758-36-0	91
4		1H-Cyclopropa[b]naphthalene, 1a,...	144	C11H12	006571-72-8	91
5		1H-Indene, 2,3-dimethyl-	144	C11H12	004773-82-4	90



Data Path : Z:\voasrv\HPCHEM1\MSVOA W\Data\VW042219\
 Data File : VW010084.D
 Acq On : 22 Apr 2019 16:06
 Operator : SY/VA
 Sample : K2455-12
 Misc : 5.04G/10ML/MSVOA W/SOIL
 ALS Vial : 1 Sample Multiplier: 1

Instrument :
 MSVOA_W
 ClientSampled :
 GAHR2

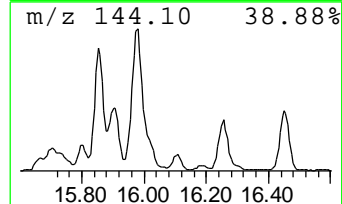
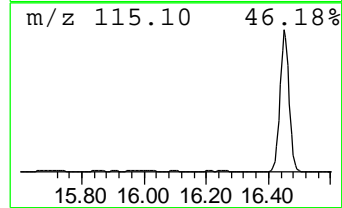
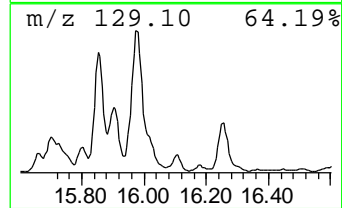
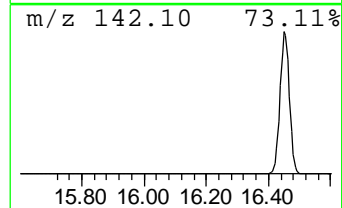
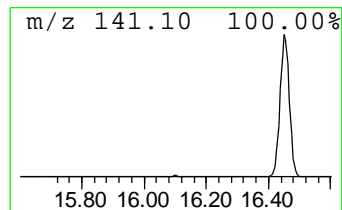
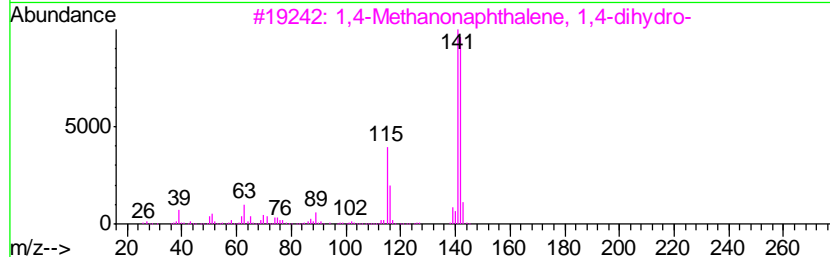
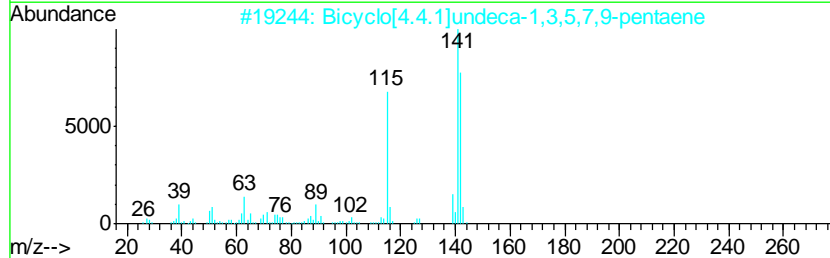
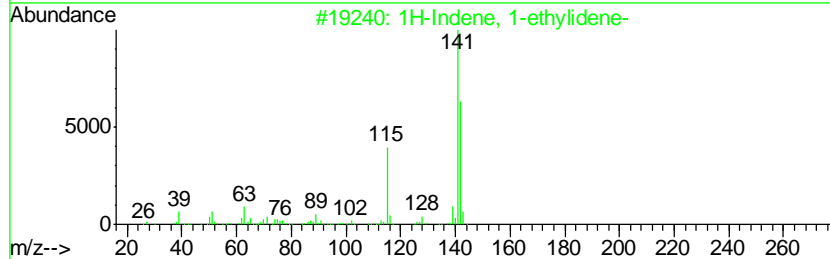
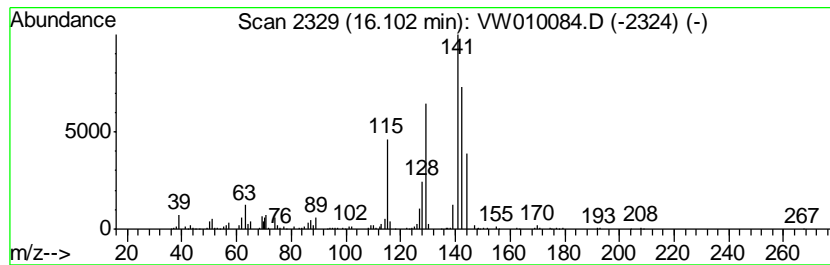
Quant Method : Z:\VOASRV\HPCHEM1\MSVOA_W\METHOD\SOM2WLM041519S.M
 Quant Title : VOC Analysis

TIC Library : C:\DATABASE\NIST11.L
 TIC Integration Parameters: LSCINT.P

 Peak Number 32 1H-Indene, 1-ethylidene- Concentration Rank 24

R.T.	EstConc	Area	Relative to ISTD	R.T.
16.10	3.68 ug/L	335775	1,4-Dichlorobenzene-d4	13.56

Hit#	of	Tentative ID	MW	MolForm	CAS#	Qual
1	5	1H-Indene, 1-ethylidene-	142	C11H10	002471-83-2	70
2		Bicyclo[4.4.1]undeca-1,3,5,7,9-p...	142	C11H10	002443-46-1	64
3		1,4-Methanonaphthalene, 1,4-dihy...	142	C11H10	004453-90-1	64
4		Bicyclo[4.4.1]undeca-1,3,5,7,9-p...	142	C11H10	002443-46-1	58
5		Naphthalene, 2-methyl-	142	C11H10	000091-57-6	50



Data Path : Z:\voasrv\HPCHEM1\MSVOA W\Data\VW042219\
 Data File : VW010084.D
 Acq On : 22 Apr 2019 16:06
 Operator : SY/VA
 Sample : K2455-12
 Misc : 5.04G/10ML/MSVOA W/SOIL
 ALS Vial : 1 Sample Multiplier: 1

Instrument :
 MSVOA_W
 ClientSampled :
 GAHR2

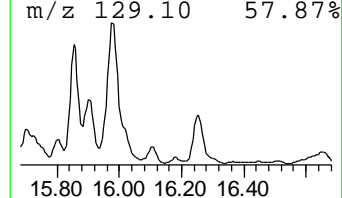
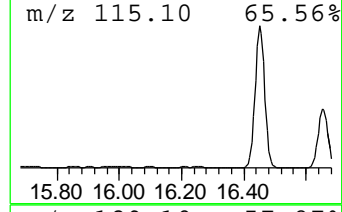
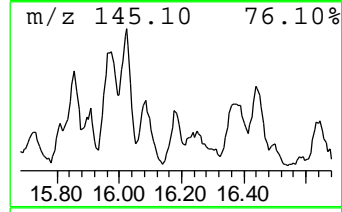
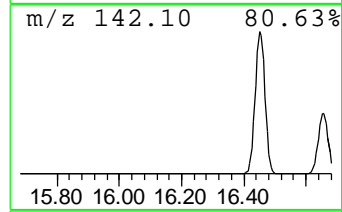
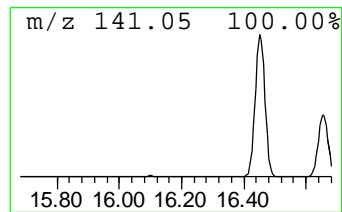
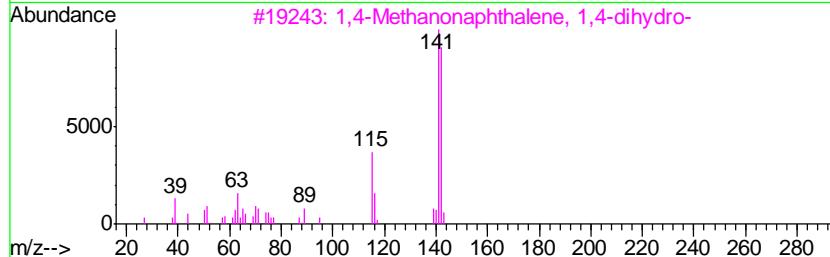
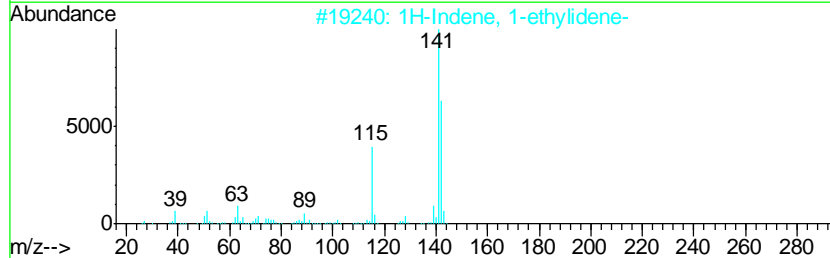
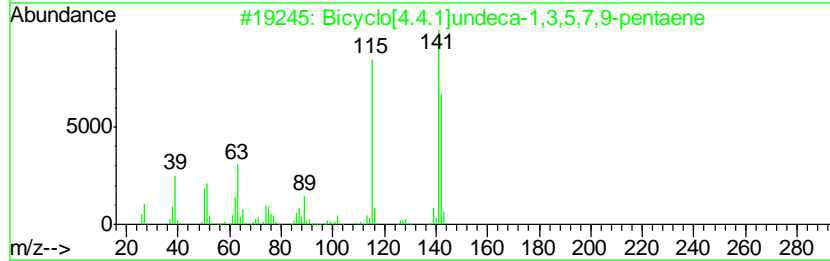
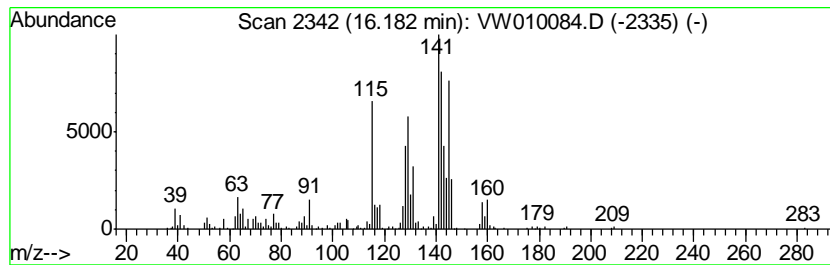
Quant Method : Z:\VOASRV\HPCHEM1\MSVOA_W\METHOD\SOM2WLM041519S.M
 Quant Title : VOC Analysis

TIC Library : C:\DATABASE\NIST11.L
 TIC Integration Parameters: LSCINT.P

 Peak Number 33 unknown-04 Concentration Rank 30

R.T.	EstConc	Area	Relative to ISTD	R.T.
16.18	2.36 ug/L	215338	1,4-Dichlorobenzene-d4	13.56

Hit#	of	Tentative ID	MW	MolForm	CAS#	Qual
1	5	Bicyclo[4.4.1]undeca-1,3,5,7,9-p...	142	C11H10	002443-46-1	35
2		1H-Indene, 1-ethylidene-	142	C11H10	002471-83-2	35
3		1,4-Methanonaphthalene, 1,4-dihy...	142	C11H10	004453-90-1	20
4		1H-Indene, 1-ethylidene-	142	C11H10	002471-83-2	20
5		Benzocycloheptatriene	142	C11H10	000264-09-5	18



Data Path : Z:\voasrv\HPCHEM1\MSVOA W\Data\VW042219\
 Data File : VW010084.D
 Acq On : 22 Apr 2019 16:06
 Operator : SY/VA
 Sample : K2455-12
 Misc : 5.04G/10ML/MSVOA W/SOIL
 ALS Vial : 1 Sample Multiplier: 1

Instrument :
 MSVOA_W
 ClientSampled :
 GAHR2

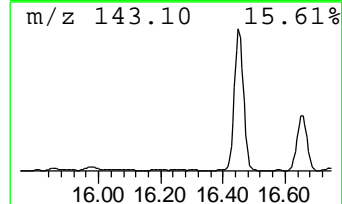
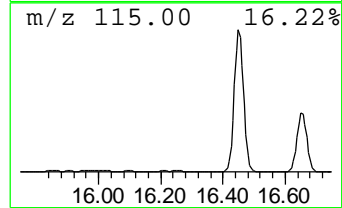
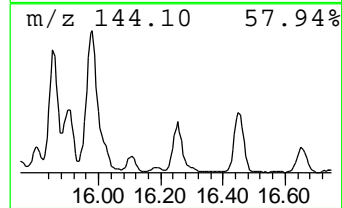
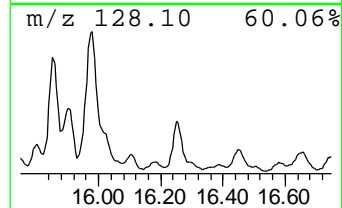
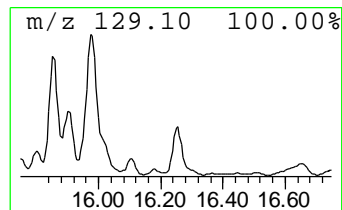
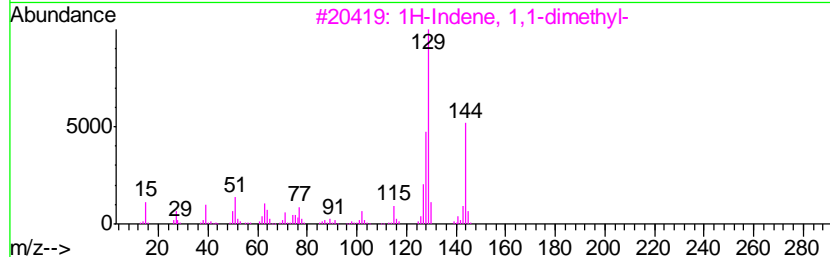
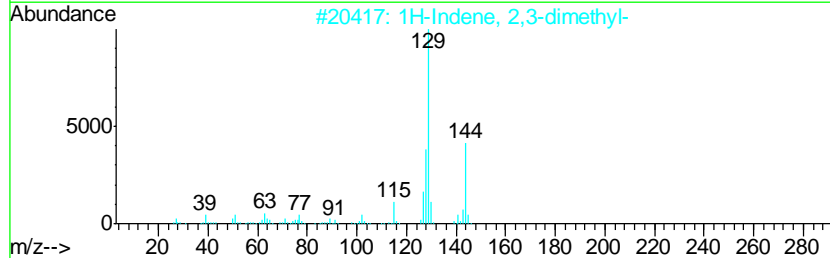
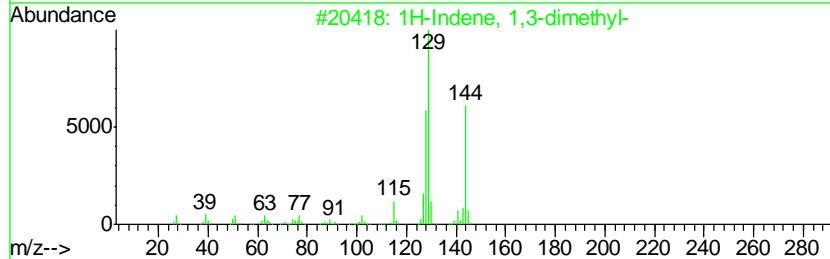
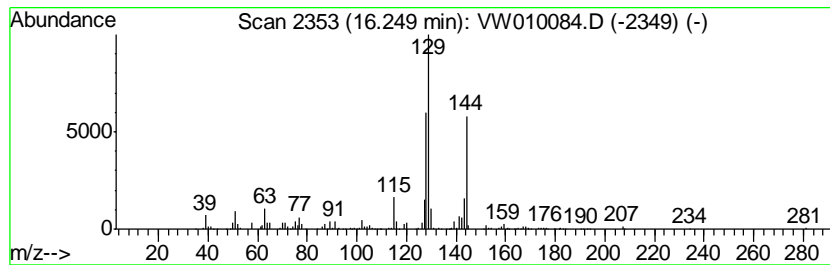
Quant Method : Z:\VOASRV\HPCHEM1\MSVOA_W\METHOD\SOM2WLM041519S.M
 Quant Title : VOC Analysis

TIC Library : C:\DATABASE\NIST11.L
 TIC Integration Parameters: LSCINT.P

 Peak Number 34 1H-Indene, 1,1-dimethyl- Concentration Rank 8

R.T.	EstConc	Area	Relative to ISTD	R.T.
16.25	8.08 ug/L	737687	1,4-Dichlorobenzene-d4	13.56

Hit#	of	Tentative ID	MW	MolForm	CAS#	Qual
1	5	1H-Indene, 1,3-dimethyl-	144	C11H12	002177-48-2	94
2		1H-Indene, 2,3-dimethyl-	144	C11H12	004773-82-4	91
3		1H-Indene, 1,1-dimethyl-	144	C11H12	018636-55-0	91
4		(1-Methylenebut-2-enyl)benzene	144	C11H12	070588-46-4	91
5		1H-Indene, 1,1-dimethyl-	144	C11H12	018636-55-0	90



Data Path : Z:\voasrv\HPCHEM1\MSVOA W\Data\VW042219\
 Data File : VW010084.D
 Acq On : 22 Apr 2019 16:06
 Operator : SY/VA
 Sample : K2455-12
 Misc : 5.04G/10ML/MSVOA W/SOIL
 ALS Vial : 1 Sample Multiplier: 1

Instrument :
 MSVOA_W
 ClientSampled :
 GAHR2

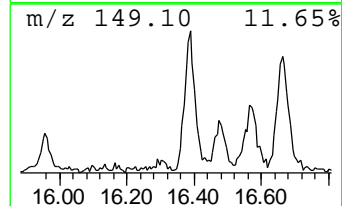
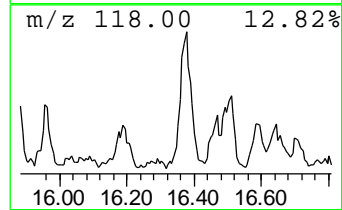
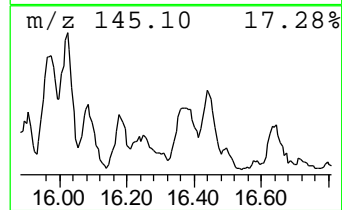
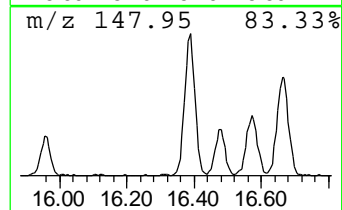
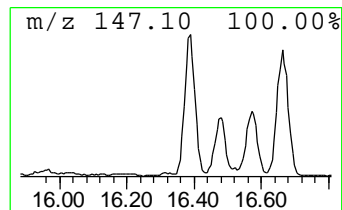
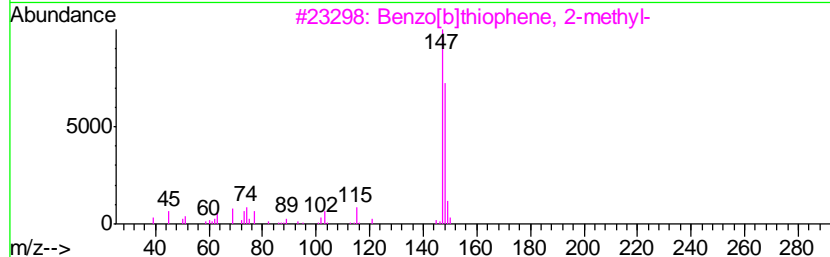
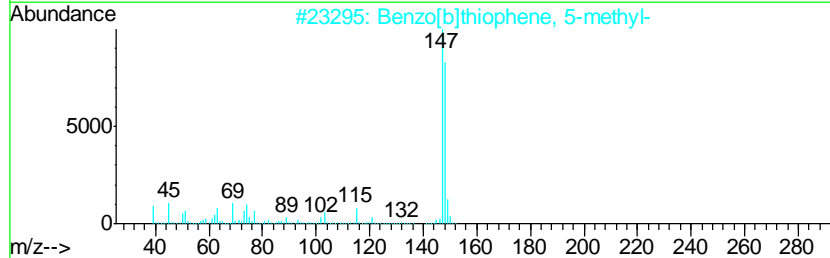
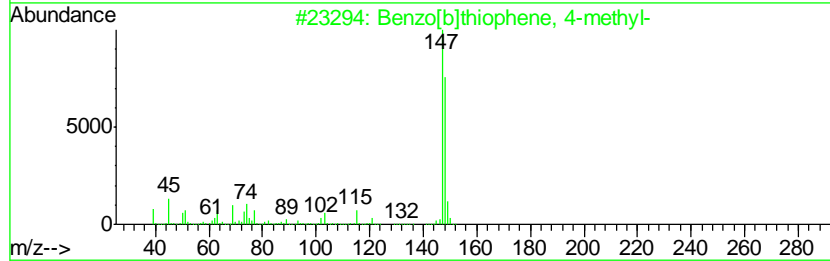
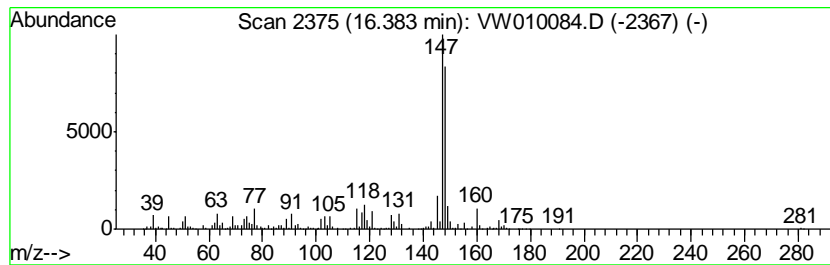
Quant Method : Z:\VOASRV\HPCHEM1\MSVOA_W\METHOD\SOM2WLM041519S.M
 Quant Title : VOC Analysis

TIC Library : C:\DATABASE\NIST11.L
 TIC Integration Parameters: LSCINT.P

 Peak Number 35 Benzo[b]thiophene, 4-methyl- Concentration Rank 16

R.T.	EstConc	Area	Relative to ISTD	R.T.
16.38	5.65 ug/L	515731	1,4-Dichlorobenzene-d4	13.56

Hit#	of	Tentative ID	MW	MolForm	CAS#	Qual
1	5	Benzo[b]thiophene, 4-methyl-	148	C9H8S	014315-11-8	81
2		Benzo[b]thiophene, 5-methyl-	148	C9H8S	014315-14-1	81
3		Benzo[b]thiophene, 2-methyl-	148	C9H8S	001195-14-8	74
4		3-Methylbenzothiophene	148	C9H8S	001455-18-1	74
5		3-Methylbenzothiophene	148	C9H8S	001455-18-1	74



Data Path : Z:\voasrv\HPCHEM1\MSVOA_W\Data\VW042219\
 Data File : VW010084.D
 Acq On : 22 Apr 2019 16:06
 Operator : SY/VA
 Sample : K2455-12
 Misc : 5.04G/10ML/MSVOA_W/SOIL
 ALS Vial : 1 Sample Multiplier: 1

Instrument :
 MSVOA_W
 ClientSampleId :
 GAHR2

Quant Method : Z:\VOASRV\HPCHEM1\MSVOA_W\METHOD\SOM2WLM041519S.M
 Quant Title : VOC Analysis

TIC Library : C:\DATABASE\NIST11.L
 TIC Integration Parameters: LSCINT.P

TIC Top Hit name	RT	EstConc	Units	Response	--Internal Standard--			
					#	RT	Resp	Conc
Naphthalene, 1,6-...	12.90	7.0	ug/L	638765	3	13.56	2282280	25.0
Benzene, 1,2,3-tr...	13.26	1.5	ug/L	132268	3	13.56	2282280	25.0
Naphthalene, 2,7-...	13.30	3.1	ug/L	281759	3	13.56	2282280	25.0
Naphthalene, 2,6-...	13.47	2.4	ug/L	221171	3	13.56	2282280	25.0
Indene	13.94	5.5	ug/L	504413	3	13.56	2282280	25.0
Benzene, 1-etheny...	14.15	1.3	ug/L	114163	3	13.56	2282280	25.0
Benzene, 2-etheny...	14.24	5.4	ug/L	491672	3	13.56	2282280	25.0
Benzene, (1-methy...	14.29	1.3	ug/L	119929	3	13.56	2282280	25.0
Benzene, 2-ethyl-...	14.47	4.4	ug/L	403723	3	13.56	2282280	25.0
unknown-01	14.51	1.4	ug/L	129401	3	13.56	2282280	25.0
Benzene, 1-etheny...	14.56	7.3	ug/L	662739	3	13.56	2282280	25.0
1H-Indene, 2,3-di...	14.69	1.5	ug/L	137670	3	13.56	2282280	25.0
Benzene, 1,2,4,5-...	14.80	7.7	ug/L	702098	3	13.56	2282280	25.0
Benzene, (1-methy...	14.88	19.5	ug/L	1783110	3	13.56	2282280	25.0
1H-Indene, 1-methyl-	14.96	35.4	ug/L	3232320	3	13.56	2282280	25.0
Tetracyclo[5.3.0....	15.07	5.6	ug/L	508748	3	13.56	2282280	25.0
1H-Indene, 2,3-di...	15.18	3.7	ug/L	336657	3	13.56	2282280	25.0
unknown-02	15.32	6.5	ug/L	591604	3	13.56	2282280	25.0
unknown-03	15.47	2.4	ug/L	217793	3	13.56	2282280	25.0
(DEL) Alkane: Str...	15.56	1.4	ug/L	129065	3	13.56	2282280	25.0
Benzene, 1-methyl...	15.66	6.3	ug/L	575308	3	13.56	2282280	25.0
Benzene, 2-etheny...	15.72	6.5	ug/L	592060	3	13.56	2282280	25.0
1H-Indene, 1,3-di...	15.80	2.2	ug/L	197185	3	13.56	2282280	25.0
1H-Indene, 2,3-di...	15.85	10.2	ug/L	933131	3	13.56	2282280	25.0
(1-Methylbuta-1,3...	15.90	4.0	ug/L	369224	3	13.56	2282280	25.0
1H-Indene, 4,7-di...	15.97	18.6	ug/L	1700450	3	13.56	2282280	25.0
1H-Indene, 1-ethy...	16.10	3.7	ug/L	335775	3	13.56	2282280	25.0
unknown-04	16.18	2.4	ug/L	215338	3	13.56	2282280	25.0
1H-Indene, 1,1-di...	16.25	8.1	ug/L	737687	3	13.56	2282280	25.0
Benzo[b]thiophene...	16.38	5.7	ug/L	515731	3	13.56	2282280	25.0