

Data Path : Z:\voasrv\HPCHEM1\MSVOA\_W\Data\VW042224\  
 Data File : VW028508.D  
 Acq On : 22 Apr 2024 14:15  
 Operator : SY/MD  
 Sample : P2164-14  
 Misc : 5.42g/10mL/MSVOA\_W/SOIL/A  
 ALS Vial : 1 Sample Multiplier: 1

Instrument :  
 MSVOA\_W  
 ClientSampleId :  
 COSA4

Integration Parameters: LSCINT.P

Integrator: RTE  
 Smoothing : OFF  
 Sampling : 1  
 Start Thrs: 0.2  
 Stop Thrs : 0  
 Filtering: 5  
 Min Area: 0 % of largest Peak  
 Max Peaks: 100  
 Peak Location: TOP

If leading or trailing edge < 100 prefer < Baseline drop else tangent >  
 Peak separation: 5

Method : Z:\voasrv\HPCHEM1\MSVOA\_W\Method\SFAMWLM040824SMA.M  
 Title : SFAM01.0

Signal : TIC: VW028508.D\data.ms

peak #	R.T. min	first scan	max scan	last scan	PK TY	peak height	corr. area	corr. % max.	% of total
1	2.363	72	78	90	rVB	97836	192973	15.02%	2.123%
2	2.893	159	165	182	rVB	64585	178301	13.88%	1.961%
3	3.387	245	246	249	rBV3	1109	1116	0.09%	0.012%
4	3.417	249	251	252	rVB2	1033	655	0.05%	0.007%
5	3.521	267	268	269	rBV	1125	773	0.06%	0.009%
6	3.655	288	290	291	rBV2	902	599	0.05%	0.007%
7	3.673	291	293	295	rVB3	1555	1205	0.09%	0.013%
8	3.887	326	328	330	rVB2	1107	729	0.06%	0.008%
9	3.905	330	331	334	rBV3	864	864	0.07%	0.010%
10	4.021	340	350	362	rBV	164476	441061	34.33%	4.852%
11	4.557	435	438	439	rBV3	707	734	0.06%	0.008%
12	4.588	441	443	447	rVV5	1090	1177	0.09%	0.013%
13	4.631	449	450	452	rBV2	1077	684	0.05%	0.008%
14	4.783	473	475	477	rVB3	959	928	0.07%	0.010%
15	4.832	481	483	485	rBV3	1051	736	0.06%	0.008%
16	4.917	485	497	505	rBV3	8842	28706	2.23%	0.316%
17	5.155	535	536	539	rBV3	1151	579	0.05%	0.006%
18	5.301	559	560	562	rBV2	766	583	0.05%	0.006%
19	5.332	562	565	567	rVB4	802	881	0.07%	0.010%
20	5.386	572	574	575	rBV2	1023	675	0.05%	0.007%
21	5.447	582	584	586	rBV3	832	657	0.05%	0.007%
22	5.515	592	595	596	rBV3	977	827	0.06%	0.009%
23	5.624	611	613	614	rBV2	925	566	0.04%	0.006%
24	5.643	614	616	619	rVB4	975	927	0.07%	0.010%
25	5.728	629	630	635	rVB5	1242	1169	0.09%	0.013%
26	5.783	635	639	642	rBV5	1424	2150	0.17%	0.024%
27	5.874	651	654	655	rBV2	1322	882	0.07%	0.010%
28	6.039	679	681	686	rVB6	861	1115	0.09%	0.012%
29	6.075	686	687	690	rVB3	972	730	0.06%	0.008%
30	6.106	690	692	693	rBV2	1332	925	0.07%	0.010%
31	6.234	711	713	714	rBV2	1068	660	0.05%	0.007%
32	6.399	738	740	742	rBV3	988	1026	0.08%	0.011%
33	6.423	742	744	746	rVV3	622	755	0.06%	0.008%
34	6.447	746	748	751	rVB4	1447	1435	0.11%	0.016%
35	6.472	751	752	755	rBV2	862	981	0.08%	0.011%
36	6.508	756	758	760	rVV3	734	728	0.06%	0.008%

Data Path : Z:\voasrv\HPCHEM1\MSVOA\_W\Data\VW042224\  
 Data File : VW028508.D  
 Acq On : 22 Apr 2024 14:15  
 Operator : SY/MD  
 Sample : P2164-14  
 Misc : 5.42g/10mL/MSVOA\_W/SOIL/A  
 ALS Vial : 1 Sample Multiplier: 1

Instrument :  
 MSVOA\_W  
 ClientSampleId :  
 COSA4

Integration Parameters: LSCINT.P

Integrator: RTE  
 Smoothing : OFF  
 Sampling : 1  
 Start Thrs: 0.2  
 Stop Thrs : 0

Filtering: 5  
 Min Area: 0 % of largest Peak  
 Max Peaks: 100  
 Peak Location: TOP

If leading or trailing edge < 100 prefer < Baseline drop else tangent >  
 Peak separation: 5

Method : Z:\voasrv\HPCHEM1\MSVOA\_W\Method\SFAMWLM040824SMA.M  
 Title : SFAM01.0

37	6.551	764	765	768	rVB3	1142	657	0.05%	0.007%
38	6.594	770	772	774	rBV3	751	616	0.05%	0.007%
39	6.648	779	781	783	rBV3	721	693	0.05%	0.008%
40	6.789	802	804	805	rVV2	1323	706	0.05%	0.008%
41	6.807	805	807	808	rVB2	846	621	0.05%	0.007%
42	6.886	819	820	822	rBV2	955	698	0.05%	0.008%
43	6.905	822	823	826	rVB3	1076	775	0.06%	0.009%
44	6.941	826	829	831	rBV4	954	1177	0.09%	0.013%
45	6.972	833	834	836	rBV2	1124	909	0.07%	0.010%
46	7.075	842	851	856	rBV	29889	80932	6.30%	0.890%
47	7.283	882	885	891	rBV7	1311	1830	0.14%	0.020%
48	7.392	901	903	907	rBV4	859	1127	0.09%	0.012%
49	7.453	912	913	915	rBV2	1029	884	0.07%	0.010%
50	7.514	921	923	925	rBV3	1074	1037	0.08%	0.011%
51	7.648	936	945	958	rVB	224596	543948	42.34%	5.983%
52	7.807	969	971	977	rVB7	992	1311	0.10%	0.014%
53	7.892	983	985	986	rBV	1226	653	0.05%	0.007%
54	8.051	1010	1011	1014	rVB3	1114	652	0.05%	0.007%
55	8.087	1014	1017	1018	rBV3	939	629	0.05%	0.007%
56	8.276	1036	1048	1062	rBV2	444614	1284698	100.00%	14.131%
57	8.459	1077	1078	1080	rBV2	979	690	0.05%	0.008%
58	8.490	1080	1083	1085	rVV4	1245	1758	0.14%	0.019%
59	8.557	1092	1094	1098	rVB5	1361	1870	0.15%	0.021%
60	8.599	1098	1101	1102	rBV3	1310	1436	0.11%	0.016%
61	8.758	1125	1127	1130	rVB4	883	875	0.07%	0.010%
62	8.843	1130	1141	1149	rBV	474845	924652	71.97%	10.171%
63	9.185	1193	1197	1198	rBV4	702	688	0.05%	0.008%
64	9.203	1198	1200	1202	rBV3	1079	962	0.07%	0.011%
65	9.270	1203	1211	1223	rVV	293971	608483	47.36%	6.693%
66	9.520	1250	1252	1257	rVB6	761	880	0.07%	0.010%
67	9.563	1257	1259	1261	rBV3	1263	1467	0.11%	0.016%
68	9.666	1273	1276	1277	rBV3	991	1170	0.09%	0.013%
69	9.831	1300	1303	1304	rBV3	1241	1507	0.12%	0.017%
70	9.947	1318	1322	1323	rBV4	1305	1090	0.08%	0.012%
71	10.032	1329	1336	1345	rBV	148449	267579	20.83%	2.943%
72	10.203	1362	1364	1365	rBV2	1275	681	0.05%	0.007%
73	10.319	1375	1383	1392	rBV	598768	1063304	82.77%	11.696%
74	10.459	1401	1406	1413	rBV2	3776	8780	0.68%	0.097%
75	10.575	1419	1425	1431	rBV	87648	151520	11.79%	1.667%
76	10.697	1441	1445	1452	rVB2	8380	15909	1.24%	0.175%

Data Path : Z:\voasrv\HPCHEM1\MSVOA\_W\Data\VW042224\  
 Data File : VW028508.D  
 Acq On : 22 Apr 2024 14:15  
 Operator : SY/MD  
 Sample : P2164-14  
 Misc : 5.42g/10mL/MSVOA\_W/SOIL/A  
 ALS Vial : 1 Sample Multiplier: 1

Instrument :  
 MSVOA\_W  
 ClientSampleId :  
 COSA4

Integration Parameters: LSCINT.P

Integrator: RTE  
 Smoothing : OFF  
 Sampling : 1  
 Start Thrs: 0.2  
 Stop Thrs : 0

Filtering: 5  
 Min Area: 0 % of largest Peak  
 Max Peaks: 100  
 Peak Location: TOP

If leading or trailing edge < 100 prefer < Baseline drop else tangent >  
 Peak separation: 5

Method : Z:\voasrv\HPCHEM1\MSVOA\_W\Method\SFAMWLM040824SMA.M  
 Title : SFAM01.0

77	10.922	1475	1482	1495	rBV	108271	195494	15.22%	2.150%
78	11.062	1500	1505	1515	rVB6	6583	13545	1.05%	0.149%
79	11.324	1544	1548	1550	rBV4	1675	2225	0.17%	0.024%
80	11.385	1556	1558	1559	rBV2	937	678	0.05%	0.007%
81	11.495	1572	1576	1577	rBV4	745	881	0.07%	0.010%
82	11.629	1591	1598	1608	rBV	625785	1048338	81.60%	11.531%
83	11.837	1628	1632	1633	rBV4	1760	1911	0.15%	0.021%
84	12.215	1692	1694	1697	rBV4	1161	983	0.08%	0.011%
85	12.306	1706	1709	1710	rVB3	937	743	0.06%	0.008%
86	12.343	1710	1715	1716	rBV5	2088	2344	0.18%	0.026%
87	12.361	1716	1718	1722	rVB5	1057	1379	0.11%	0.015%
88	12.544	1746	1748	1749	rBV2	1302	1311	0.10%	0.014%
89	12.605	1751	1758	1764	rVB2	18111	34132	2.66%	0.375%
90	12.690	1765	1772	1779	rBV	188758	313310	24.39%	3.446%
91	12.897	1803	1806	1807	rBV3	1342	1293	0.10%	0.014%
92	12.928	1809	1811	1817	rVB7	2772	4712	0.37%	0.052%
93	13.178	1848	1852	1854	rBV5	1739	1826	0.14%	0.020%
94	13.288	1865	1870	1878	rVB3	6764	13175	1.03%	0.145%
95	13.391	1884	1887	1890	rBV5	3407	4051	0.32%	0.045%
96	13.556	1907	1914	1923	rBV	501062	842683	65.59%	9.269%
97	13.757	1943	1947	1950	rBV5	2016	3333	0.26%	0.037%
98	13.848	1955	1962	1972	rVV	451431	737334	57.39%	8.110%
99	14.056	1994	1996	2003	rVB2	8758	14257	1.11%	0.157%
100	15.872	2292	2294	2297	rBV3	1907	1912	0.15%	0.021%

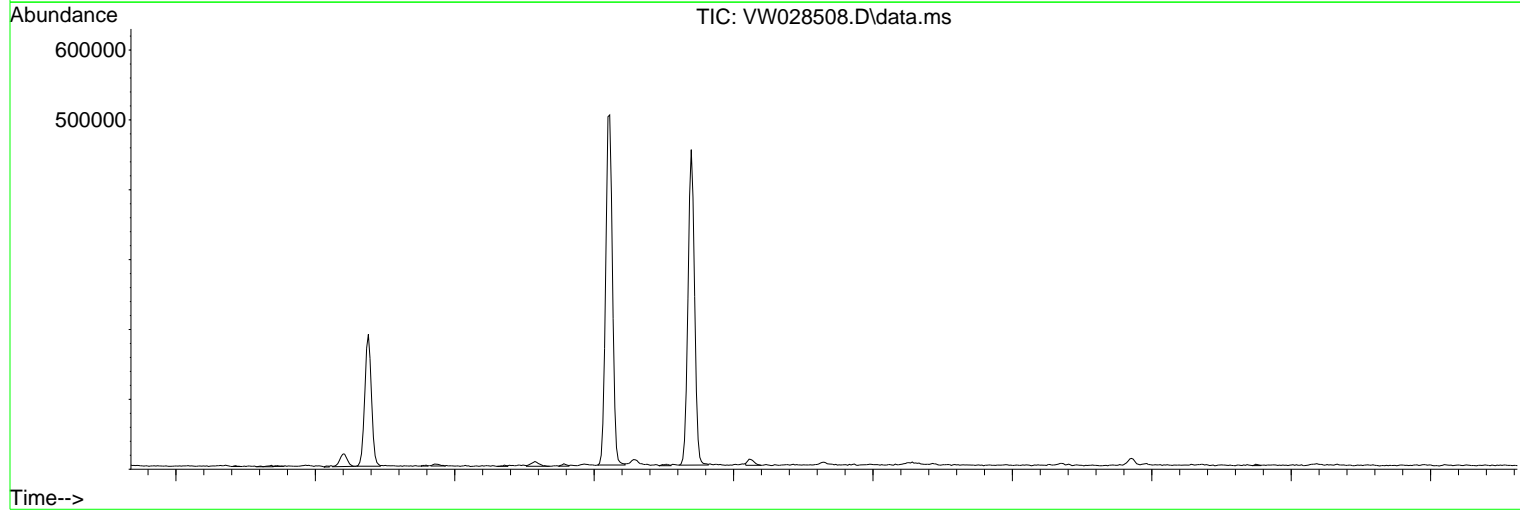
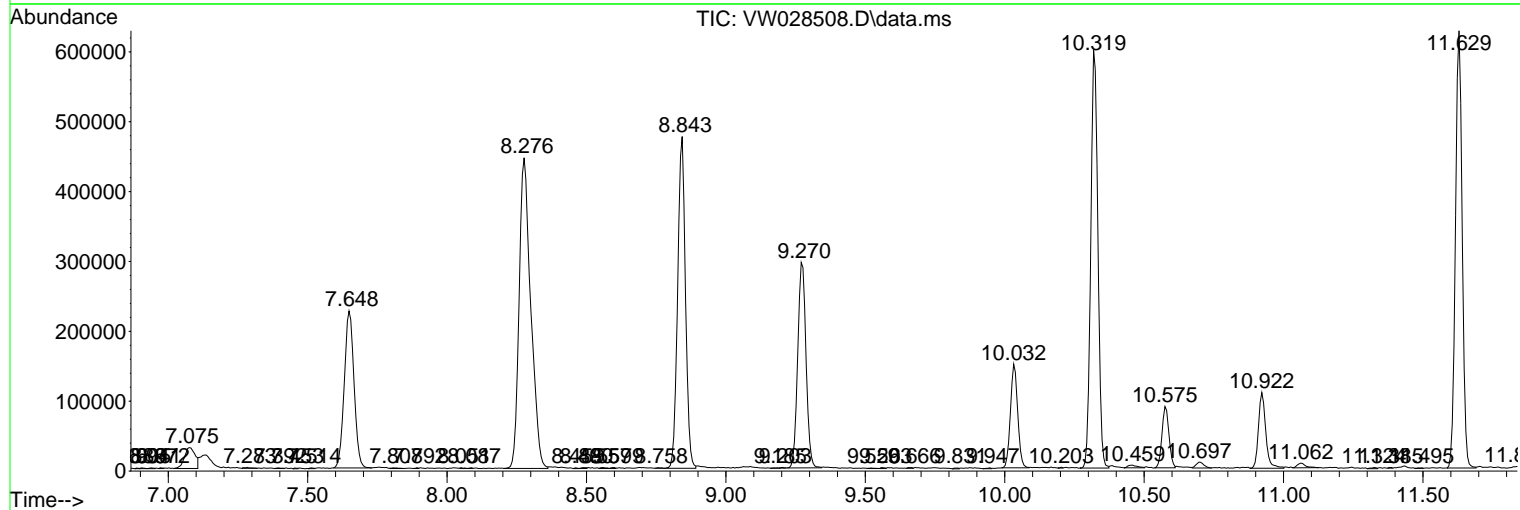
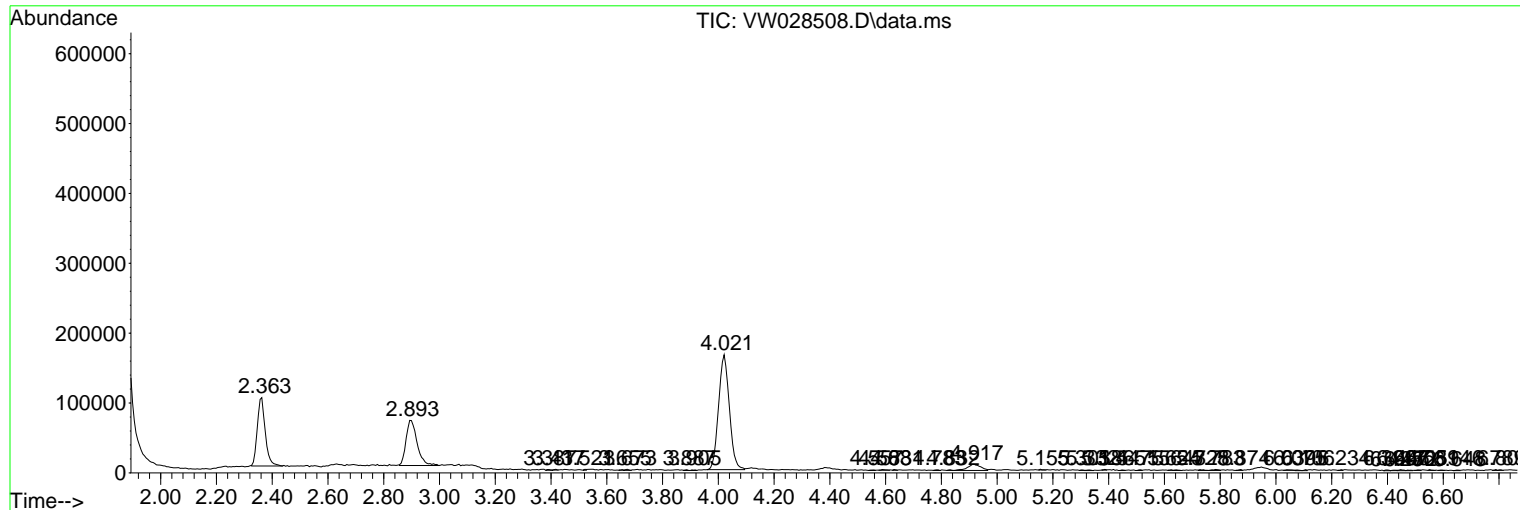
Sum of corrected areas: 9091196

Data Path : Z:\voasrv\HPCHEM1\MSVOA\_W\Data\VW042224\  
 Data File : VW028508.D  
 Acq On : 22 Apr 2024 14:15  
 Operator : SY/MD  
 Sample : P2164-14  
 Misc : 5.42g/10mL/MSVOA\_W/SOIL/A  
 ALS Vial : 1 Sample Multiplier: 1

Instrument :  
 MSVOA\_W  
 ClientSampleId :  
 COSA4

Quant Method : Z:\voasrv\HPCHEM1\MSVOA\_W\Method\SFAMWLM040824SMA.M  
 Quant Title : SFAM01.0

TIC Library : C:\Database\NIST20.L  
 TIC Integration Parameters: LSCINT.P



Library Search Compound Report

Data Path : Z:\voasrv\HPCHEM1\MSVOA\_W\Data\VW042224\  
Data File : VW028508.D  
Acq On : 22 Apr 2024 14:15  
Operator : SY/MD  
Sample : P2164-14  
Misc : 5.42g/10mL/MSVOA\_W/SOIL/A  
ALS Vial : 1 Sample Multiplier: 1

Instrument :  
MSVOA\_W  
ClientSampleId :  
C0SA4

Quant Method : Z:\voasrv\HPCHEM1\MSVOA\_W\Method\SFAMWLM040824SMA.M  
Quant Title : SFAM01.0

TIC Library : C:\Database\NIST20.L  
TIC Integration Parameters: LSCINT.P

No Library Search Compounds Detected

\*\*\*\*\*

Data Path : Z:\voasrv\HPCHEM1\MSVOA\_W\Data\VW042224\  
Data File : VW028508.D  
Acq On : 22 Apr 2024 14:15  
Operator : SY/MD  
Sample : P2164-14  
Misc : 5.42g/10mL/MSVOA\_W/SOIL/A  
ALS Vial : 1 Sample Multiplier: 1

Instrument :  
MSVOA\_W  
ClientSampleId :  
C0SA4

Quant Method : Z:\voasrv\HPCHEM1\MSVOA\_W\Method\SFAMWLM040824SMA.M  
Quant Title : SFAM01.0

TIC Library : C:\Database\NIST20.L  
TIC Integration Parameters: LSCINT.P

TIC Top Hit name	RT	EstConc	Units	Response	#	RT	Resp	Conc
------------------	----	---------	-------	----------	---	----	------	------

-----|