

Data File : VW010107.D
 Acq On : 24 Apr 2019 10:28
 Operator : SY/VA
 Sample : VSTD00514
 Misc : 5.00G/10ML/MSVOA_W/SOIL
 ALS Vial : 1 Sample Multiplier: 1

Instrument :
 MSVOA_W
 ClientSampleId :
 VSTD00514

Quant Time: Apr 24 11:34:12 2019
 Quant Method : Z:\VOASRV\HPCHEM1\MSVOA_W\METHOD\SOM2WLM042419S.M
 Quant Title : VOC Analysis
 QLast Update : Wed Apr 24 11:30:38 2019
 Response via : Initial Calibration

Internal Standards	R.T.	QIon	Response	Conc	Units	Dev(Min)
1) 1,4-Difluorobenzene	8.84	114	866606	25.00	ug/L	0.00
28) Chlorobenzene-d5	11.63	117	789772	25.00	ug/L	0.00
60) 1,4-Dichlorobenzene-d4	13.56	152	372210	25.00	ug/L	0.00

System Monitoring Compounds

4) Vinyl Chloride-d3	2.35	65	38560	4.71	ug/L	0.00
7) Chloroethane-d5	2.89	69	30687	3.70	ug/L	0.00
10) 1,1-Dichloroethene-d2	4.02	63	118412	5.21	ug/L	0.00
20) 2-Butanone-d5	7.08	46	36364	8.21	ug/L	0.00
24) Chloroform-d	7.64	84	111007	4.43	ug/L	0.00
26) 1,2-Dichloroethane-d4	8.30	65	65974	4.24	ug/L	0.00
29) Benzene-d6	8.27	84	222252	5.12	ug/L	0.00
33) 1,2-Dichloropropane-d6	9.27	67	69811	5.05	ug/L	0.00
37) Toluene-d8	10.32	98	195936	4.95	ug/L	0.00
38) trans-1,3-Dichloropropene-	10.58	79	30203	4.61	ug/L	0.00
39) 2-Hexanone-d5	10.93	63	25360	8.28	ug/L	0.00
48) 1,1,2,2-Tetrachloroethane-	12.69	84	57427	4.44	ug/L	0.00
61) 1,2-Dichlorobenzene-d4	13.86	152	68777	4.92	ug/L	0.00

Target Compounds

						Qvalue
2) Dichlorodifluoromethane	2.01	85	44606	3.669	ug/L	97
3) Chloromethane	2.21	50	40371	3.643	ug/L	96
5) Vinyl chloride	2.37	62	49647	4.762	ug/L	96
6) Bromomethane	2.78	94	29145	3.786	ug/L	99
8) Chloroethane	2.93	64	29422	3.931	ug/L	96
9) Trichlorofluoromethane	3.24	101	25039	2.917	ug/L	99
11) 1,1,2-Trichloro-1,2,2-trif	4.05	101	54894	4.912	ug/L	95
12) 1,1-Dichloroethene	4.04	96	55209	5.277	ug/L	92
13) Acetone	4.12	43	32691	8.298	ug/L	73
14) Carbon disulfide	4.37	76	148203	4.997	ug/L	99
15) Methyl Acetate	4.67	43	34754	4.371	ug/L	100
16) Methylene chloride	4.92	84	62916	4.010	ug/L	95
17) Methyl tert-butyl Ether	5.42	73	74869	4.890	ug/L	97
18) trans-1,2-Dichloroethene	5.42	96	57373	4.845	ug/L	100
19) 1,1-Dichloroethane	6.21	63	111311	4.716	ug/L	96
21) 2-Butanone	7.17	43	43275	8.389	ug/L	97
22) cis-1,2-Dichloroethene	7.16	96	61717	4.803	ug/L	98
23) Bromochloromethane	7.51	128	27588	4.610	ug/L	96
25) Chloroform	7.68	83	109960	4.553	ug/L	99
27) 1,2-Dichloroethane	8.40	62	82214	4.422	ug/L	97
30) Cyclohexane	7.95	56	95727	5.363	ug/L	99
31) 1,1,1-Trichloroethane	7.87	97	86018	5.215	ug/L	98
32) Carbon tetrachloride	8.07	117	82759	5.110	ug/L	98
34) Benzene	8.32	78	241127	5.183	ug/L	100
35) Trichloroethene	9.09	95	63359	5.238	ug/L	98
36) Methylcyclohexane	9.33	83	102278	5.262	ug/L	100
40) 1,2-Dichloropropane	9.37	63	62373	5.069	ug/L	99
41) Bromodichloromethane	9.64	83	78228	4.657	ug/L	97
42) cis-1,3-Dichloropropene	10.07	75	90888	4.791	ug/L	97
43) 4-Methyl-2-pentanone	10.21	43	91760	9.055	ug/L	100

Data File : VW010107.D
Acq On : 24 Apr 2019 10:28
Operator : SY/VA
Sample : VSTD00514
Misc : 5.00G/10ML/MSVOA_W/SOIL
ALS Vial : 1 Sample Multiplier: 1

Instrument :
MSVOA_W
ClientSampleId :
VSTD00514

Quant Time: Apr 24 11:34:12 2019
Quant Method : Z:\VOASRV\HPCHEM1\MSVOA_W\METHOD\SOM2WLM042419S.M
Quant Title : VOC Analysis
QLast Update : Wed Apr 24 11:30:38 2019
Response via : Initial Calibration

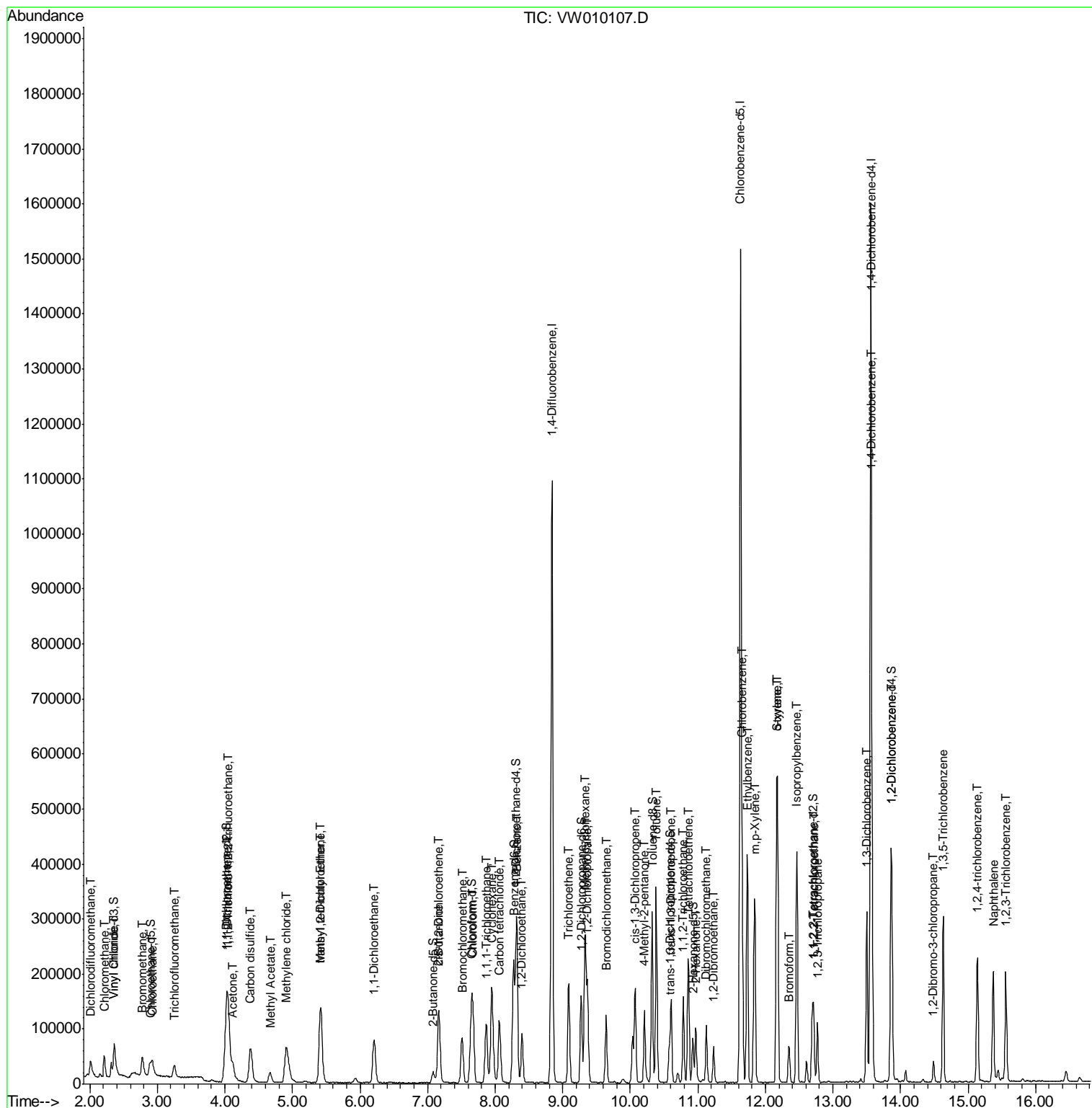
Internal Standards	R.T.	QIon	Response	Conc	Units	Dev(Min)
44) Toluene	10.38	91	254565	5.158	ug/L	99
45) trans-1,3-Dichloropropene	10.60	75	78076	4.661	ug/L	97
46) 1,1,2-Trichloroethane	10.79	97	45254	4.716	ug/L	95
47) Tetrachloroethene	10.86	164	49543	5.243	ug/L	99
49) 2-Hexanone	10.97	43	64569	8.969	ug/L	98
50) Dibromochloromethane	11.13	129	52028	4.568	ug/L	93
51) 1,2-Dibromoethane	11.24	107	43428	4.623	ug/L	95
52) Chlorobenzene	11.66	112	158250	4.914	ug/L	99
53) Ethylbenzene	11.73	91	279494	5.066	ug/L	99
54) m,p-Xylene	11.84	106	101952	5.052	ug/L	96
55) o-xylene	12.17	106	95844	4.952	ug/L	95
56) Styrene	12.18	104	163539	4.827	ug/L	98
57) Isopropylbenzene	12.46	105	265384	5.148	ug/L	100
58) 1,1,2,2-Tetrachloroethane	12.72	83	57756	4.575	ug/L	95
59) 1,2,3-Trichloropropane	12.77	75	42985	4.550	ug/L	99
62) Bromoform	12.35	173	29494	4.512	ug/L	99
63) 1,3-Dichlorobenzene	13.50	146	117899	5.243	ug/L	98
64) 1,4-Dichlorobenzene	13.58	146	124992	5.172	ug/L	99
65) 1,2-Dichlorobenzene	13.87	146	110378	5.002	ug/L	98
66) 1,2-Dibromo-3-chloropropan	14.49	75	10261	4.595	ug/L	89
67) 1,3,5-Trichlorobenzene	14.63	180	87023	5.283	ug/L	98
68) 1,2,4-trichlorobenzene	15.14	180	69021	5.115	ug/L	99
69) Naphthalene	15.38	128	171827	5.933	ug/L	100
70) 1,2,3-Trichlorobenzene	15.56	180	66016	5.127	ug/L	99

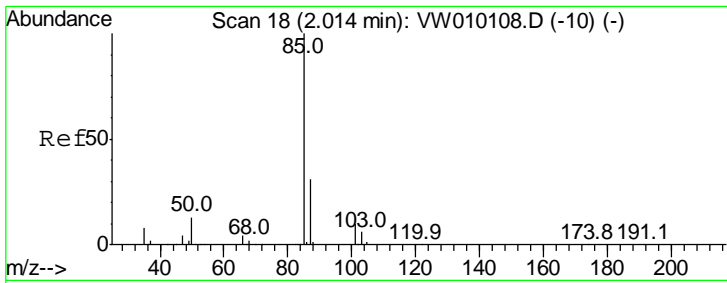
(#) = qualifier out of range (m) = manual integration (+) = signals summed

Data File : VW010107.D
Acq On : 24 Apr 2019 10:28
Operator : SY/VA
Sample : VSTD00514
Misc : 5.00G/10ML/MSVOA_W/SOIL
ALS Vial : 1 Sample Multiplier: 1

Instrument :
MSVOA_W
Client Sampled :
VSTD00514

Quant Time: Apr 24 11:34:12 2019
Quant Method : Z:\VOASRV\HPCHEM1\MSVOA_W\METHOD\SOM2WLM042419S.M
Quant Title : VOC Analysis
QLast Update : Wed Apr 24 11:30:38 2019
Response via : Initial Calibration

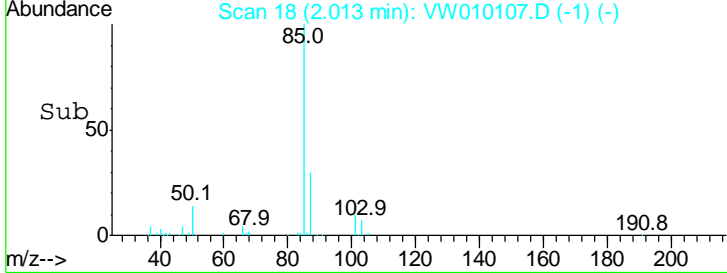
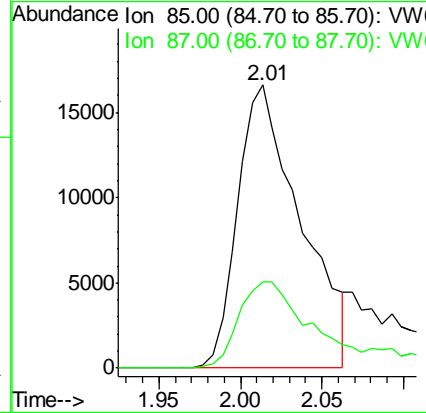
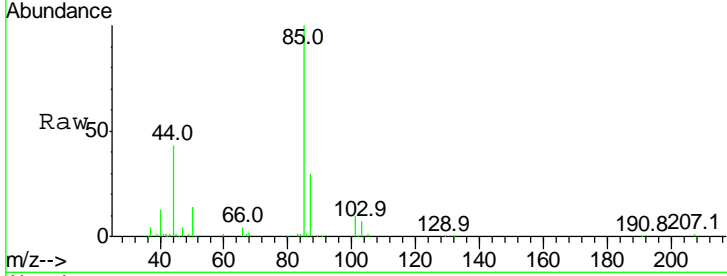




#2
 Dichlorodifluoromethane
 Concen: 3.669 ug/L
 RT: 2.01 min Scan# 18
 Delta R.T. -0.00 min
 Lab File: VW010107.D
 Acq: 24 Apr 2019 10:28

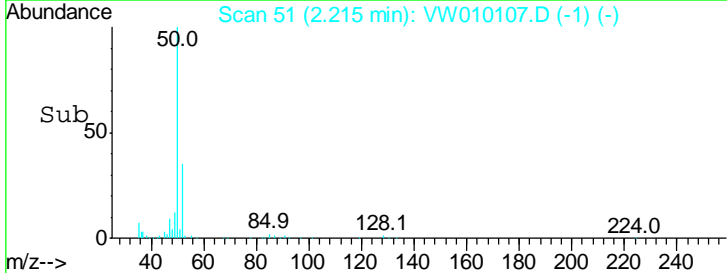
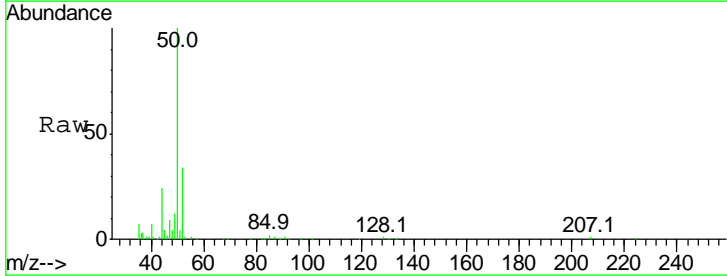
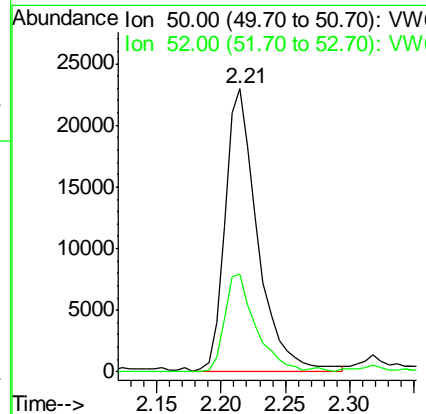
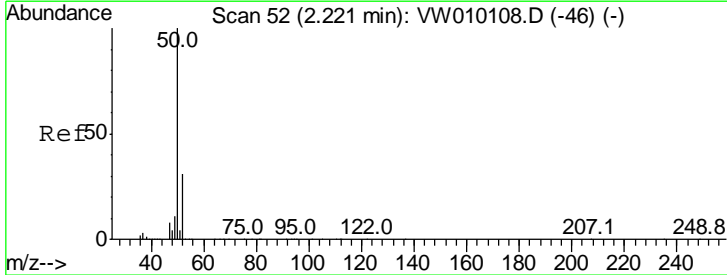
Instrument :
 MSVOA_W
ClientSampled :
 VSTD00514

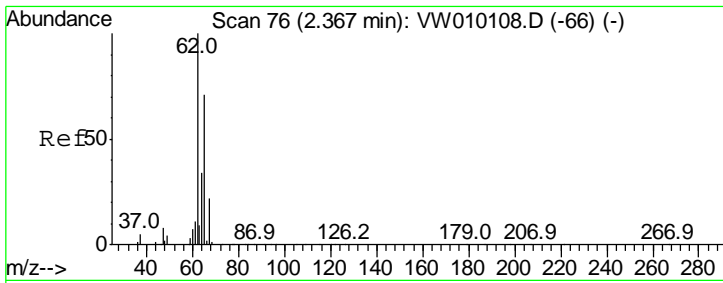
Tgt Ion: 85 Resp: 44606
 Ion Ratio Lower Upper
 85 100
 87 34.1 22.7 42.1



#3
 Chloromethane
 Concen: 3.643 ug/L
 RT: 2.21 min Scan# 51
 Delta R.T. -0.00 min
 Lab File: VW010107.D
 Acq: 24 Apr 2019 10:28

Tgt Ion: 50 Resp: 40371
 Ion Ratio Lower Upper
 50 100
 52 34.5 22.7 42.1

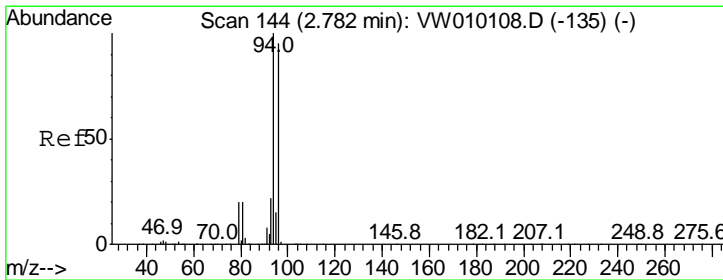
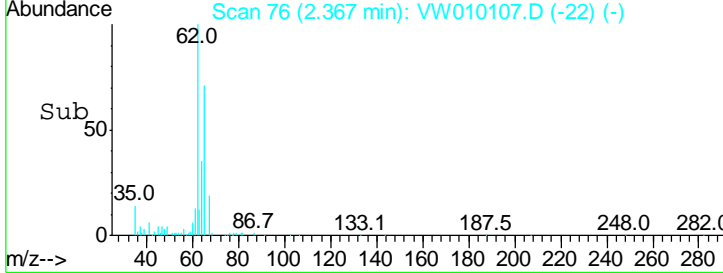
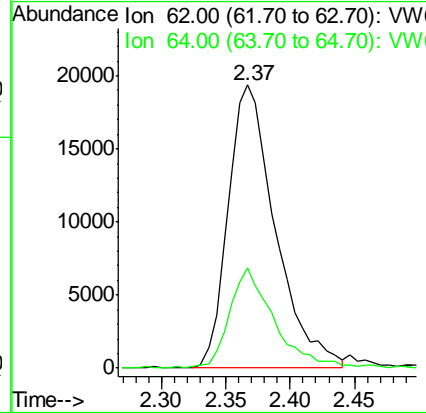
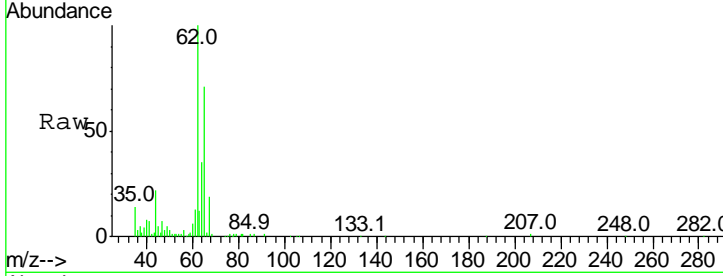




#5
 Vinyl chloride
 Concen: 4.762 ug/L
 RT: 2.37 min Scan# 76
 Delta R.T. -0.00 min
 Lab File: VW010107.D
 Acq: 24 Apr 2019 10:28

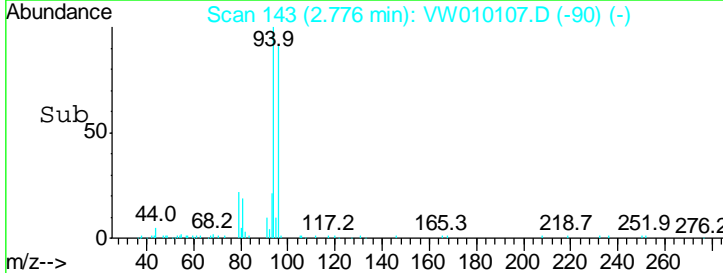
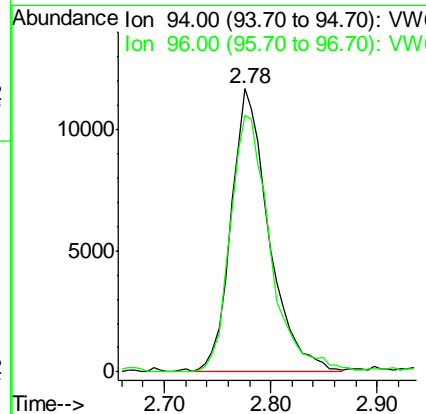
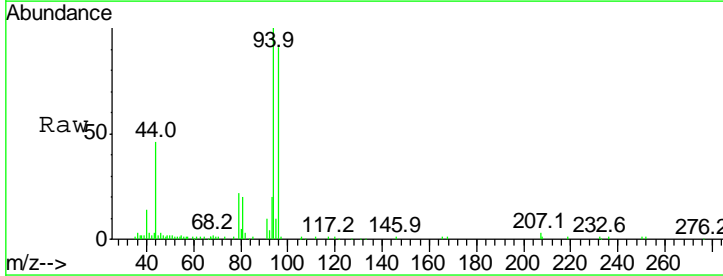
Instrument :
 MSVOA_W
 ClientSampled :
 VSTD00514

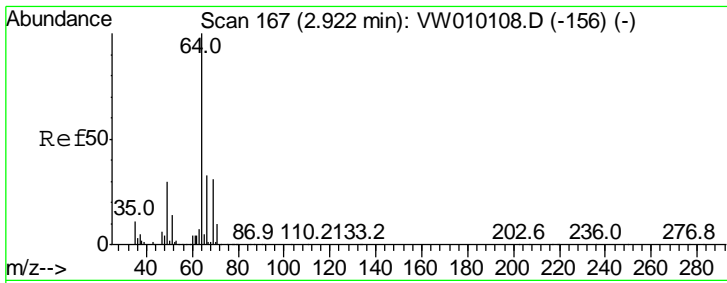
Tgt Ion: 62 Resp: 49647
 Ion Ratio Lower Upper
 62 100
 64 35.4 23.3 43.3



#6
 Bromomethane
 Concen: 3.786 ug/L
 RT: 2.78 min Scan# 143
 Delta R.T. -0.01 min
 Lab File: VW010107.D
 Acq: 24 Apr 2019 10:28

Tgt Ion: 94 Resp: 29145
 Ion Ratio Lower Upper
 94 100
 96 95.6 9.5 180.3

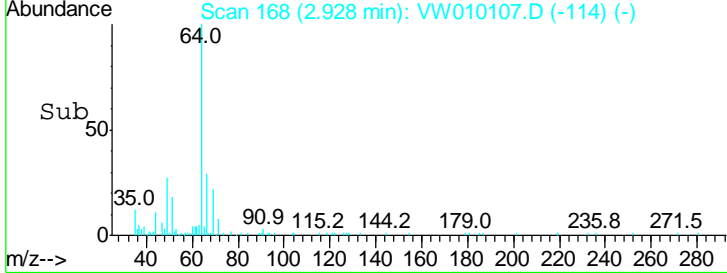
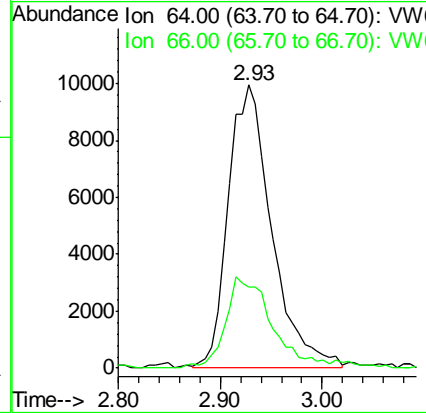
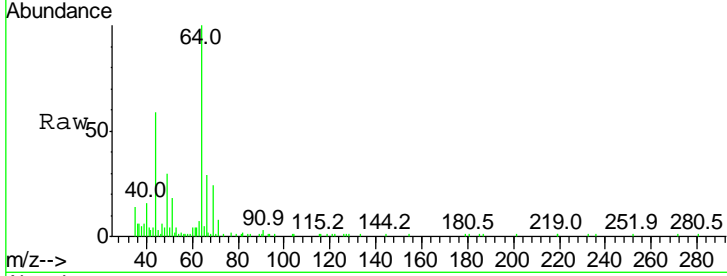




#8
 Chloroethane
 Concen: 3.931 ug/L
 RT: 2.93 min Scan# 168
 Delta R.T. -0.00 min
 Lab File: VW010107.D
 Acq: 24 Apr 2019 10:28

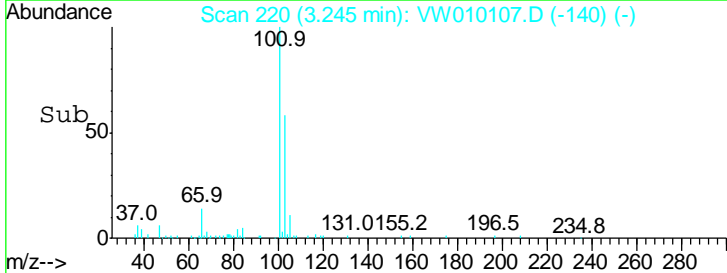
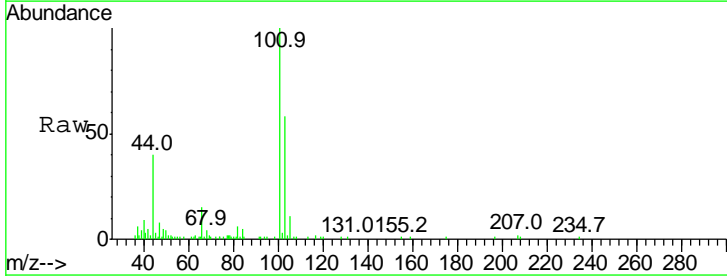
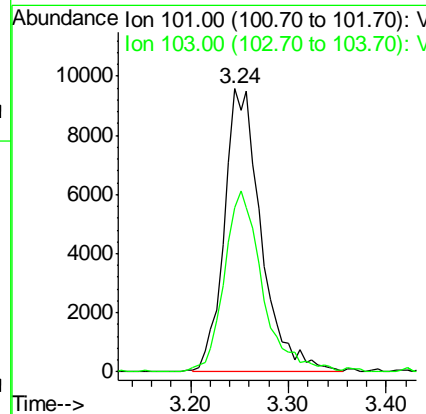
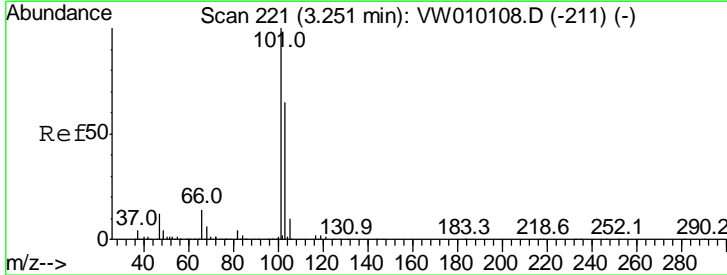
Instrument : MSVOA_W
 ClientSampled : VSTD00514

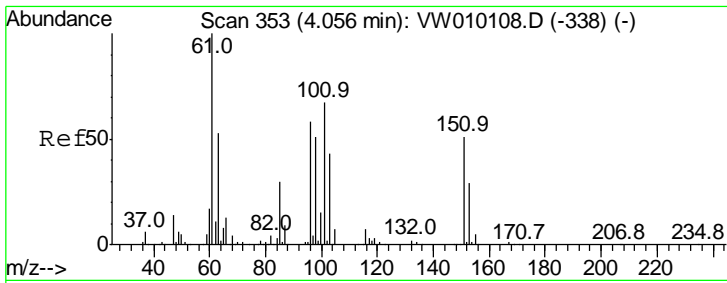
Tgt Ion: 64 Resp: 29422
 Ion Ratio Lower Upper
 64 100
 66 28.7 21.7 40.3



#9
 Trichlorofluoromethane
 Concen: 2.917 ug/L
 RT: 3.24 min Scan# 220
 Delta R.T. -0.01 min
 Lab File: VW010107.D
 Acq: 24 Apr 2019 10:28

Tgt Ion: 101 Resp: 25039
 Ion Ratio Lower Upper
 101 100
 103 64.2 44.5 82.7

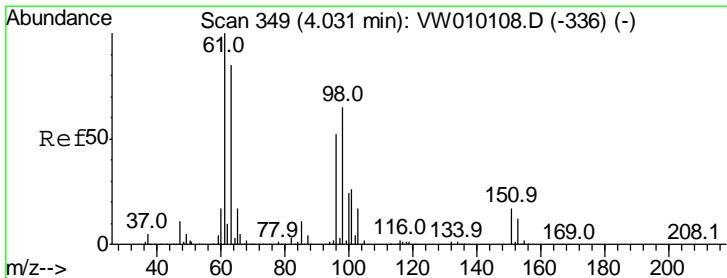
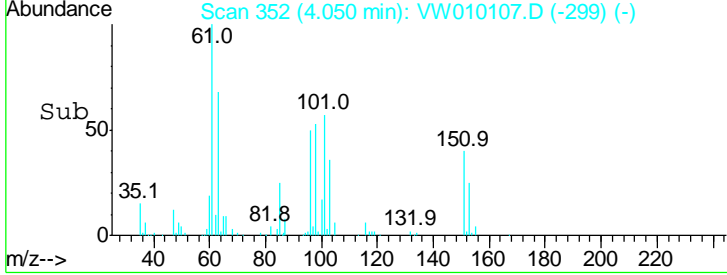
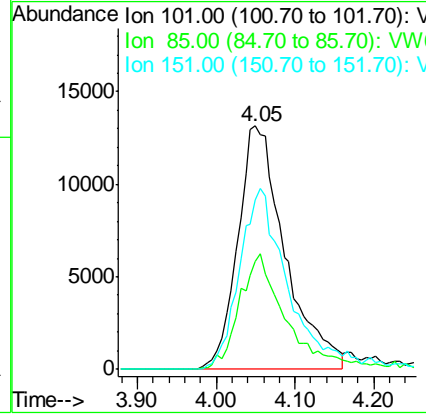
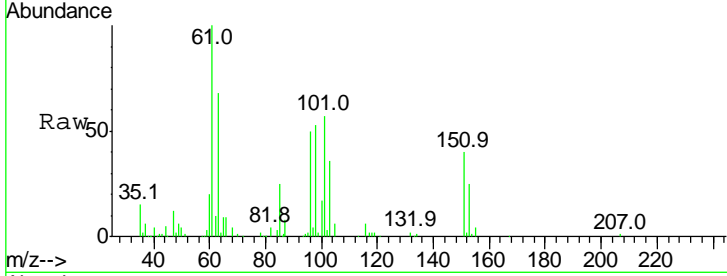




#11
 1,1,2-Trichloro-1,2,2-trifluoroethane
 Concen: 4.912 ug/L
 RT: 4.05 min Scan# 352
 Delta R.T. -0.01 min
 Lab File: VW010107.D
 Acq: 24 Apr 2019 10:28

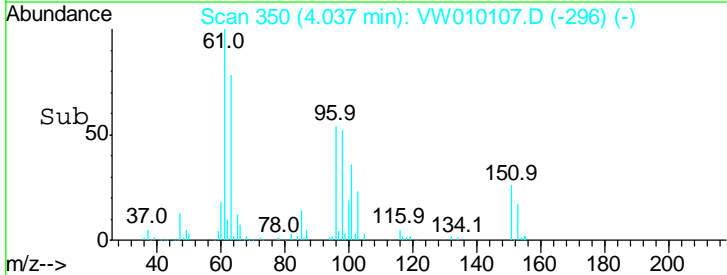
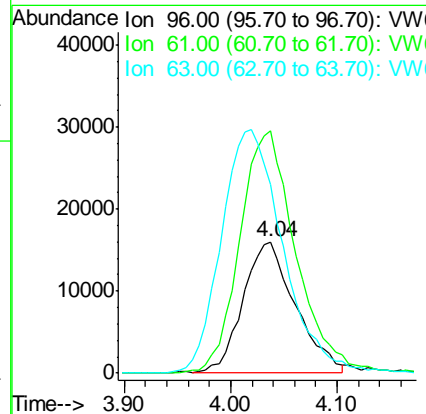
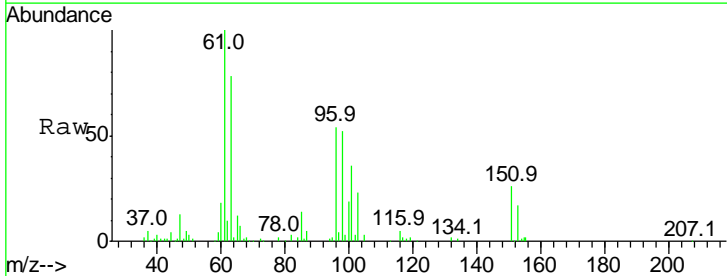
Instrument : MSVOA_W
 ClientSampled : VSTD00514

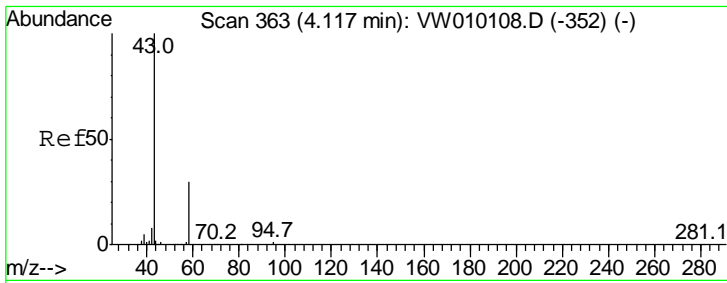
Tgt Ion	Resp	Lower	Upper
101	100		
85	39.6	37.0	55.4
151	71.2	58.2	87.2



#12
 1,1-Dichloroethene
 Concen: 5.277 ug/L
 RT: 4.04 min Scan# 350
 Delta R.T. -0.00 min
 Lab File: VW010107.D
 Acq: 24 Apr 2019 10:28

Tgt Ion	Resp	Lower	Upper
96	100		
61	183.9	131.2	243.6
63	143.5	113.9	211.5

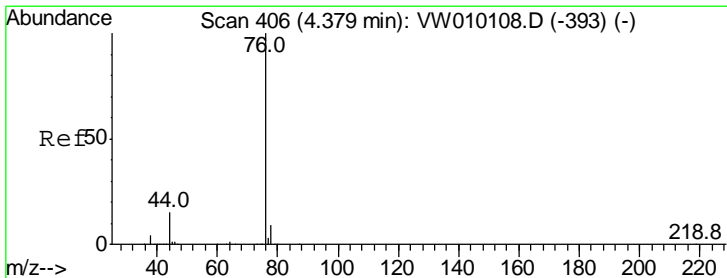
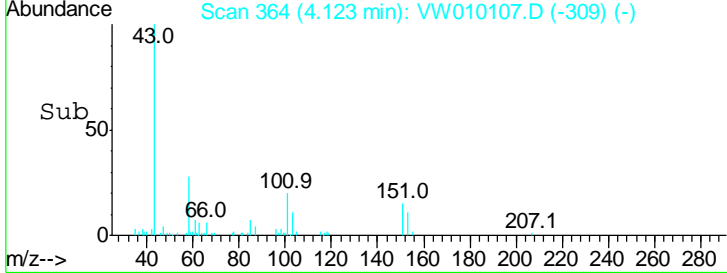
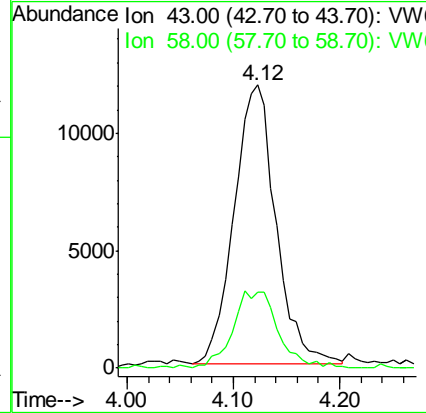
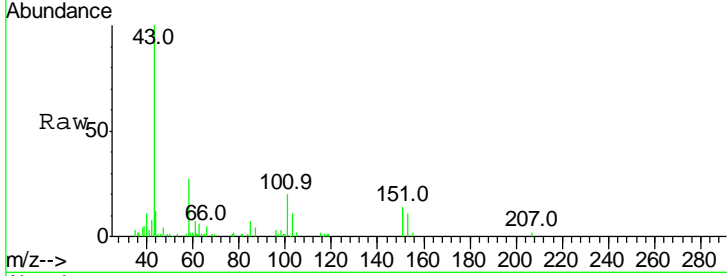




#13
 Acetone
 Concen: 8.298 ug/L
 RT: 4.12 min Scan# 364
 Delta R.T. 0.01 min
 Lab File: VW010107.D
 Acq: 24 Apr 2019 10:28

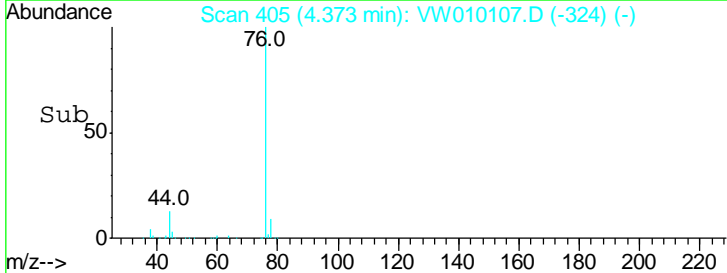
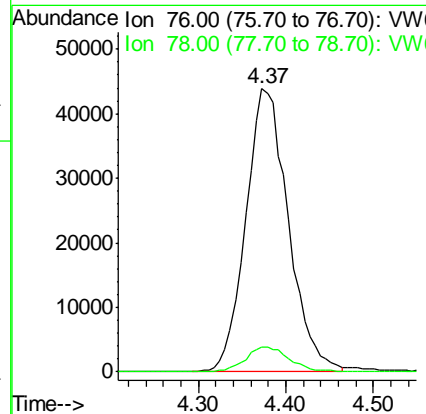
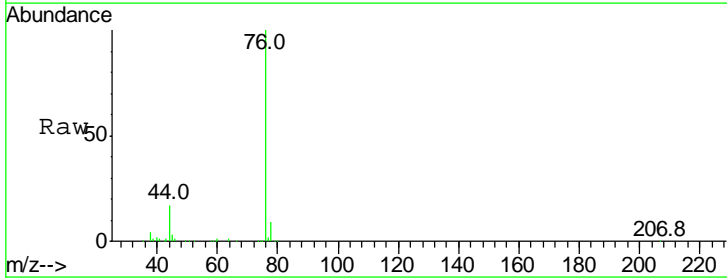
Instrument :
 MSVOA_W
ClientSampled :
 VSTD00514

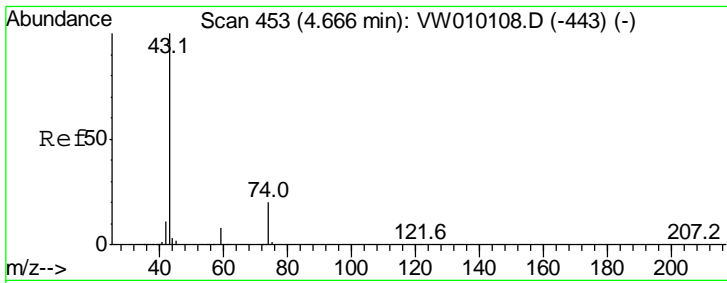
Tgt Ion	Resp	Lower	Upper
43	100		
58	13.9	0.0	56.2



#14
 Carbon disulfide
 Concen: 4.997 ug/L
 RT: 4.37 min Scan# 405
 Delta R.T. -0.01 min
 Lab File: VW010107.D
 Acq: 24 Apr 2019 10:28

Tgt Ion	Resp	Lower	Upper
76	100		
78	8.9	7.5	11.3



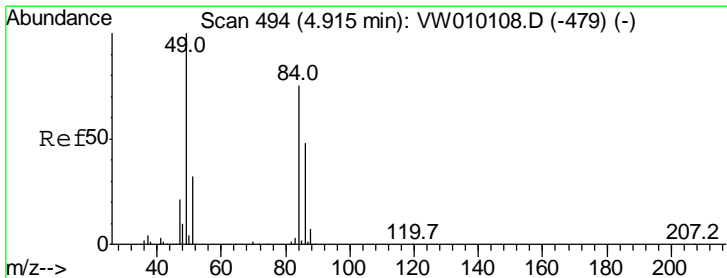
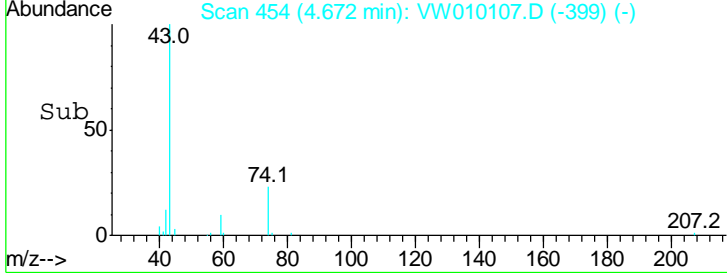
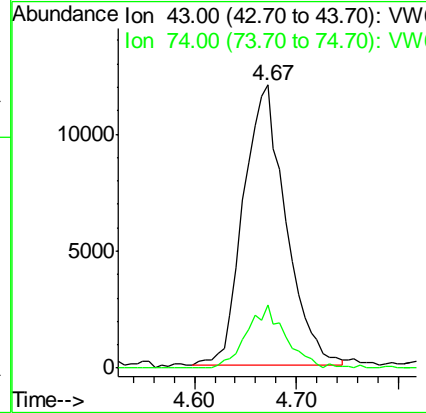
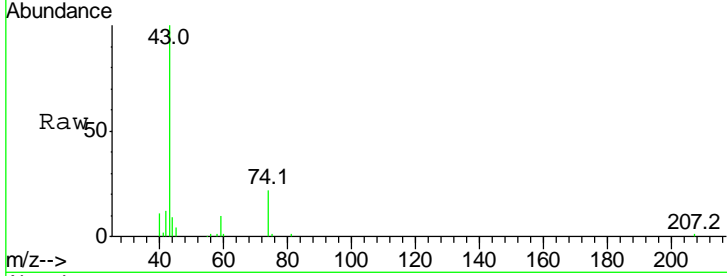


#15
 Methyl Acetate
 Concen: 4.371 ug/L
 RT: 4.67 min Scan# 454
 Delta R.T. 0.01 min
 Lab File: VW010107.D
 Acq: 24 Apr 2019 10:28

Instrument :
 MSVOA_W
ClientSampled :
 VSTD00514

Tgt Ion: 43 Resp: 34754

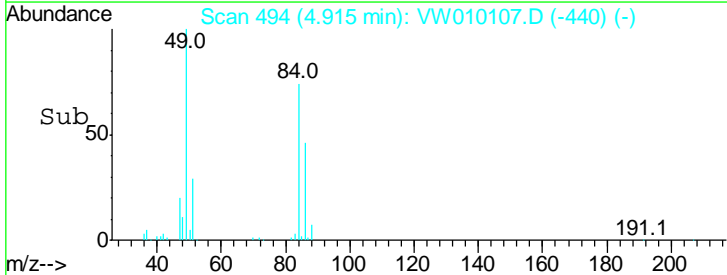
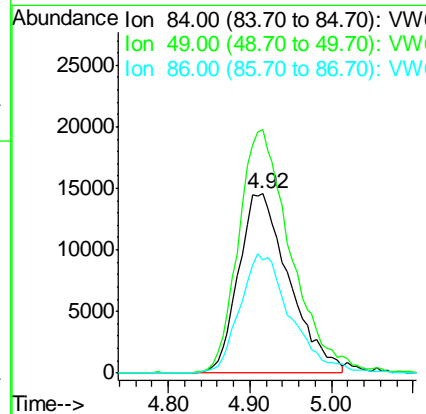
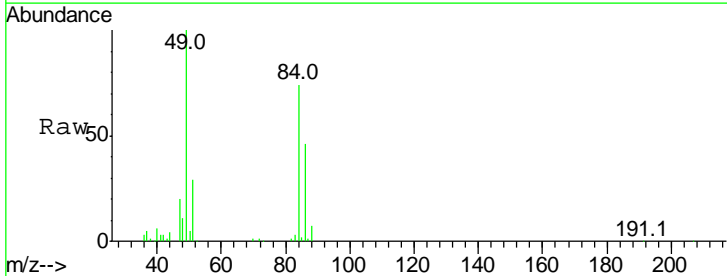
Ion	Ratio	Lower	Upper
43	100		
74	20.1	16.2	24.4

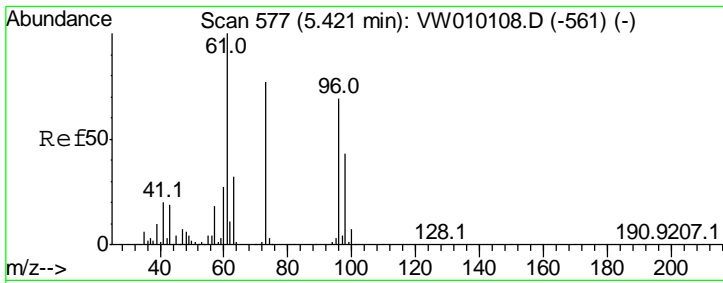


#16
 Methylene chloride
 Concen: 4.010 ug/L
 RT: 4.92 min Scan# 494
 Delta R.T. -0.00 min
 Lab File: VW010107.D
 Acq: 24 Apr 2019 10:28

Tgt Ion: 84 Resp: 62916

Ion	Ratio	Lower	Upper
84	100		
49	135.7	100.7	187.1
86	62.8	43.8	81.3

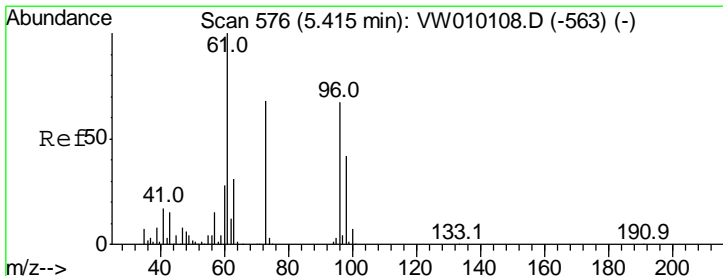
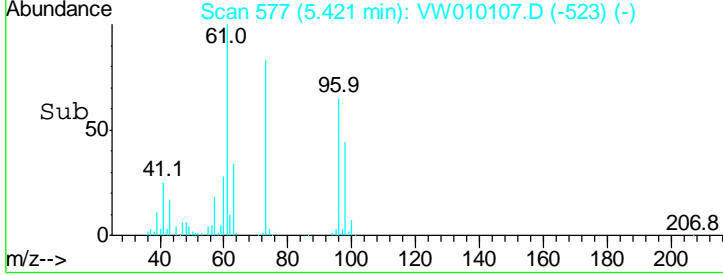
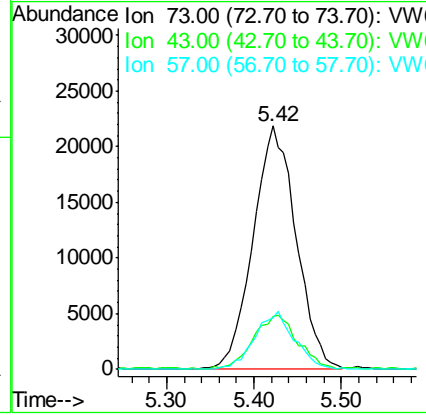
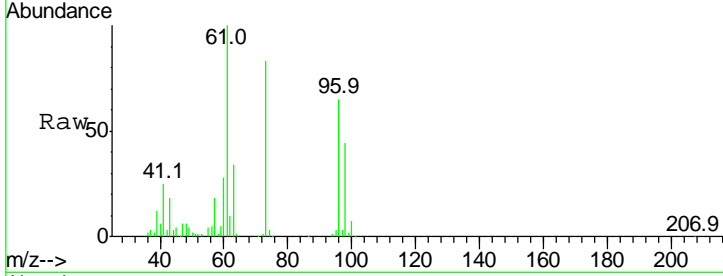




#17
 Methyl tert-butyl Ether
 Concen: 4.890 ug/L
 RT: 5.42 min Scan# 577
 Delta R.T. -0.00 min
 Lab File: VW010107.D
 Acq: 24 Apr 2019 10:28

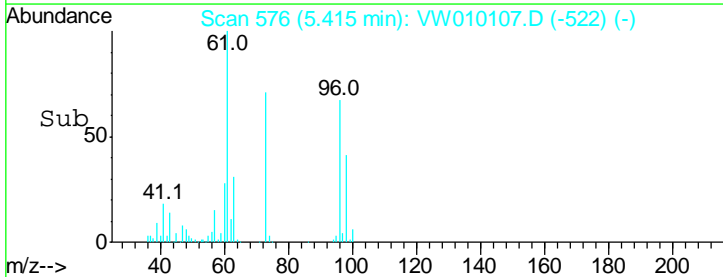
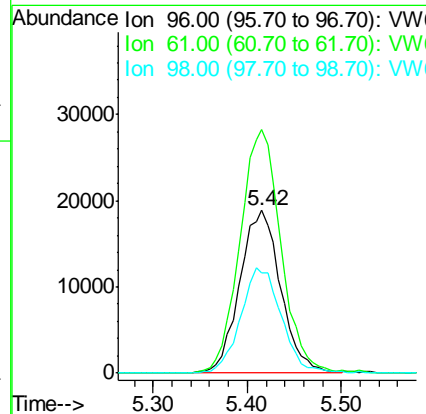
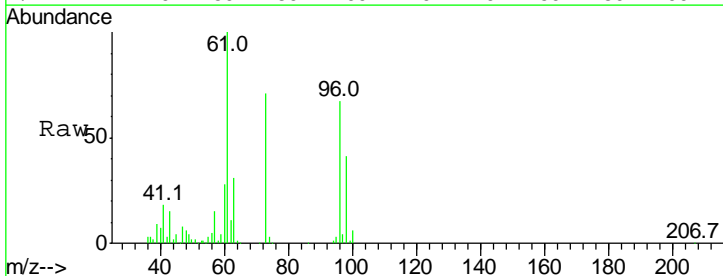
Instrument :
 MSVOA_W
 ClientSampled :
 VSTD00514

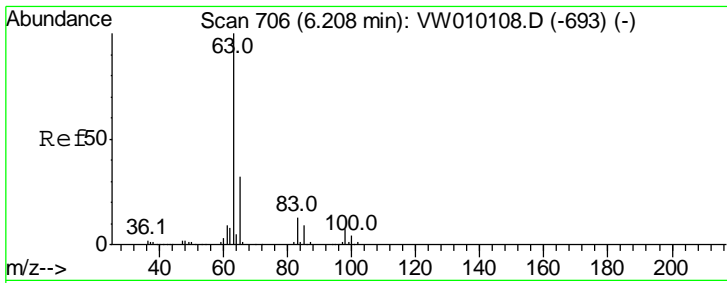
Tgt Ion	Resp	Lower	Upper
73	74869		
Ion Ratio			
73	100		
43	23.0	19.4	29.0
57	21.5	18.6	28.0



#18
 trans-1,2-Dichloroethene
 Concen: 4.845 ug/L
 RT: 5.42 min Scan# 576
 Delta R.T. -0.00 min
 Lab File: VW010107.D
 Acq: 24 Apr 2019 10:28

Tgt Ion	Resp	Lower	Upper
96	57373		
Ion Ratio			
96	100		
61	149.9	104.9	194.9
98	61.8	44.1	81.9

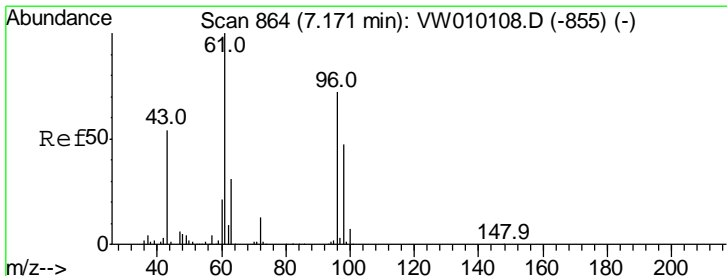
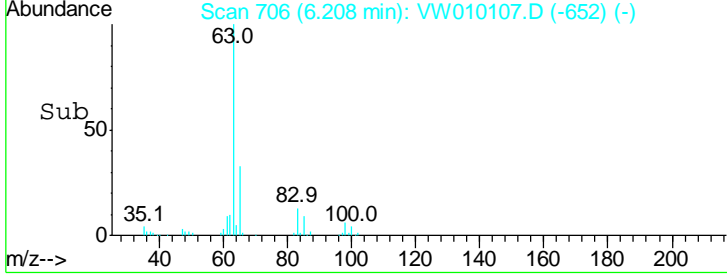
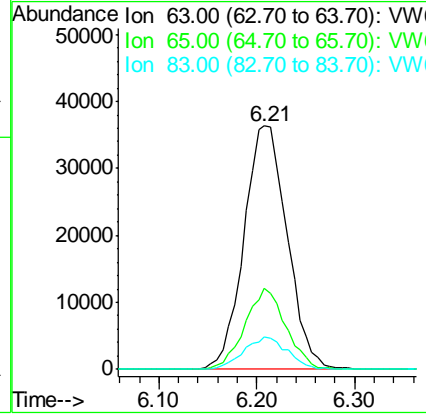
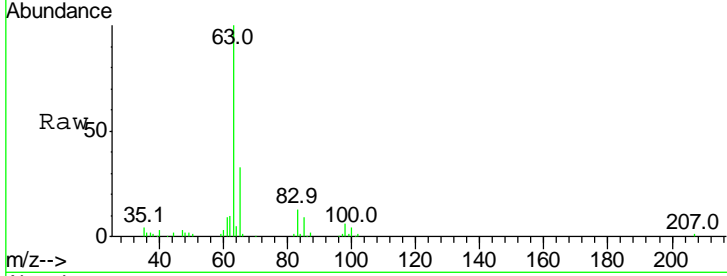




#19
 1,1-Dichloroethane
 Concen: 4.716 ug/L
 RT: 6.21 min Scan# 706
 Delta R.T. -0.00 min
 Lab File: VW010107.D
 Acq: 24 Apr 2019 10:28

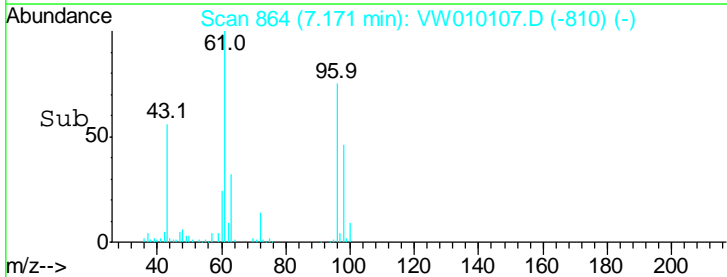
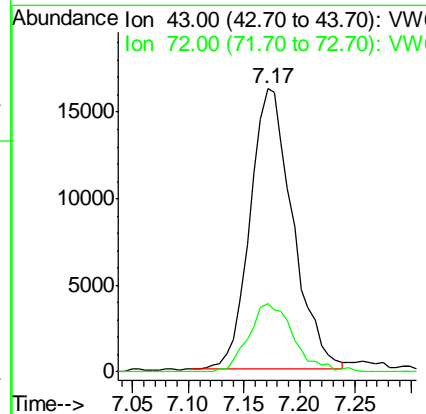
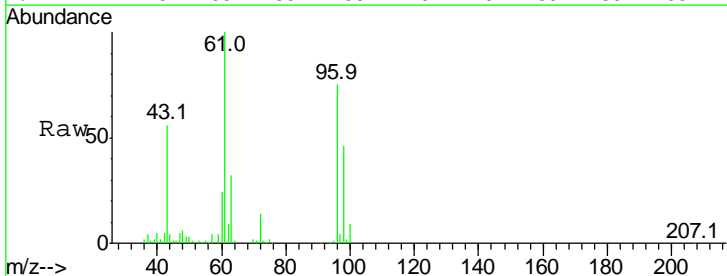
Instrument :
 MSVOA_W
ClientSampled :
 VSTD00514

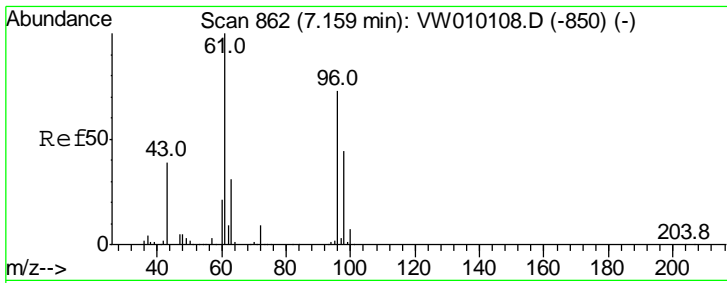
Tgt Ion	Resp	Lower	Upper
63	111311		
65	33.3	21.6	40.0
83	13.3	9.0	16.6



#21
 2-Butanone
 Concen: 8.389 ug/L
 RT: 7.17 min Scan# 864
 Delta R.T. -0.00 min
 Lab File: VW010107.D
 Acq: 24 Apr 2019 10:28

Tgt Ion	Resp	Lower	Upper
43	43275		
43	100		
72	25.5	11.9	35.7

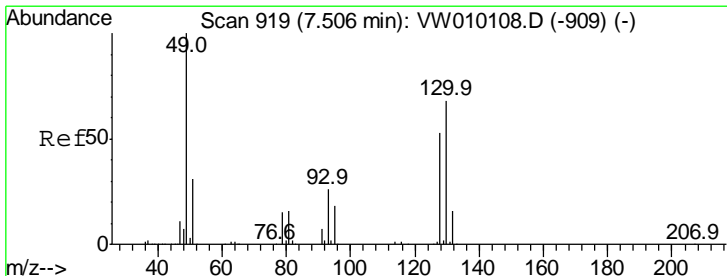
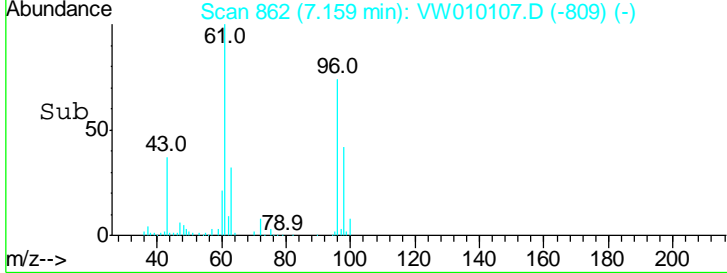
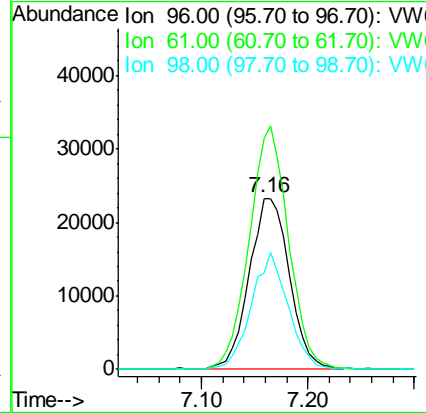
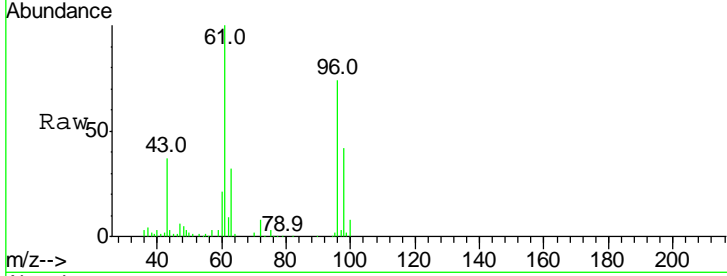




#22
 cis-1,2-Dichloroethene
 Concen: 4.803 ug/L
 RT: 7.16 min Scan# 862
 Delta R.T. -0.01 min
 Lab File: VW010107.D
 Acq: 24 Apr 2019 10:28

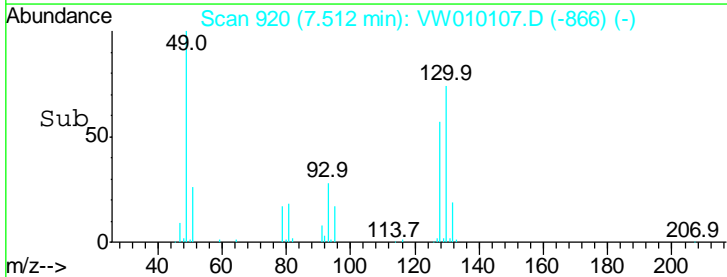
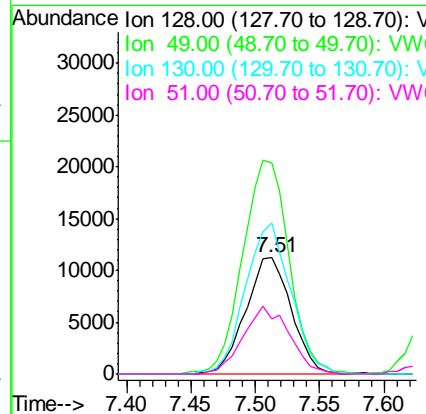
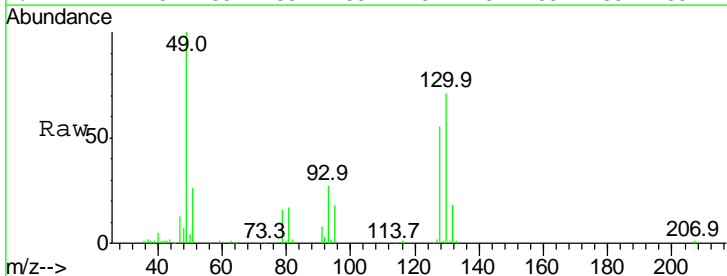
Instrument : MSVOA_W
 ClientSampled : VSTD00514

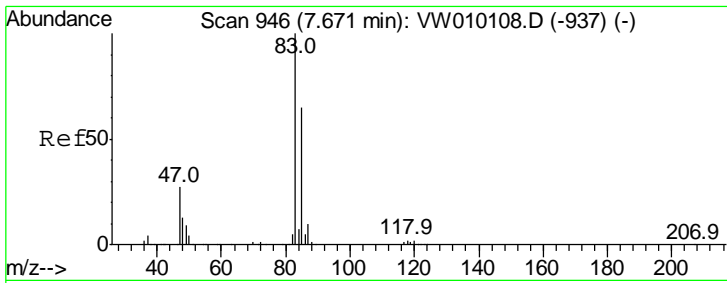
Tgt Ion	Resp	Lower	Upper
96	61717		
61	134.5	94.7	175.9
98	56.7	42.8	79.6



#23
 Bromochloromethane
 Concen: 4.610 ug/L
 RT: 7.51 min Scan# 920
 Delta R.T. -0.00 min
 Lab File: VW010107.D
 Acq: 24 Apr 2019 10:28

Tgt Ion	Resp	Lower	Upper
128	27588		
49	181.9	132.2	245.4
130	130.0	91.5	169.9
51	47.5	45.4	68.0

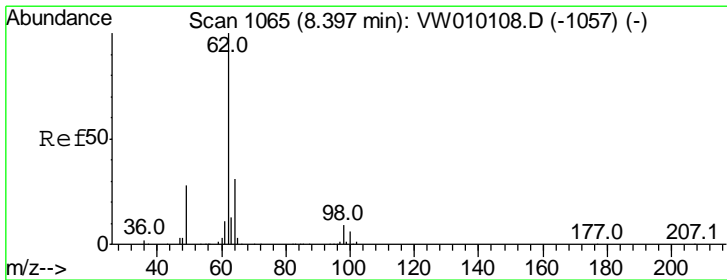
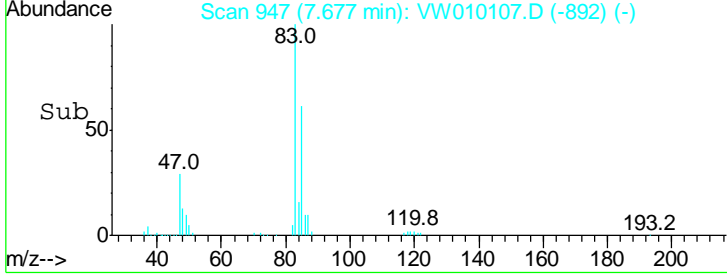
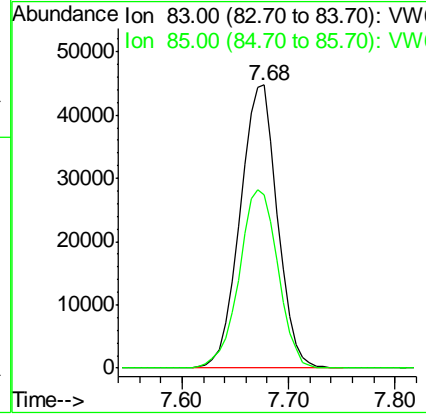
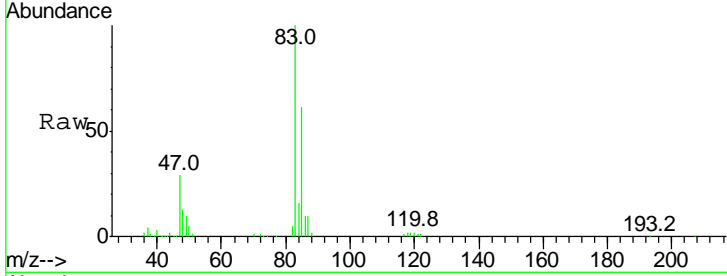




#25
 Chloroform
 Concen: 4.553 ug/L
 RT: 7.68 min Scan# 947
 Delta R.T. 0.01 min
 Lab File: VW010107.D
 Acq: 24 Apr 2019 10:28

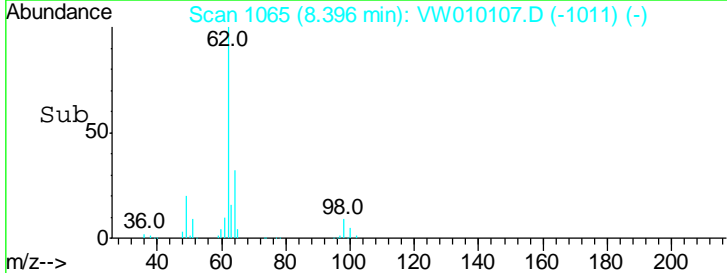
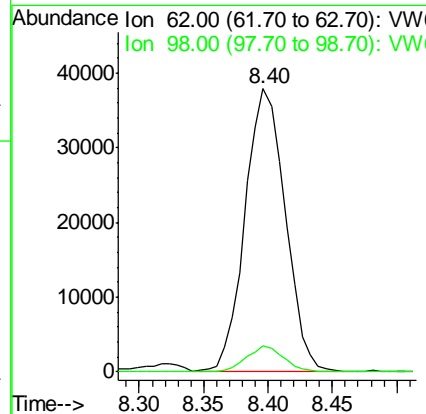
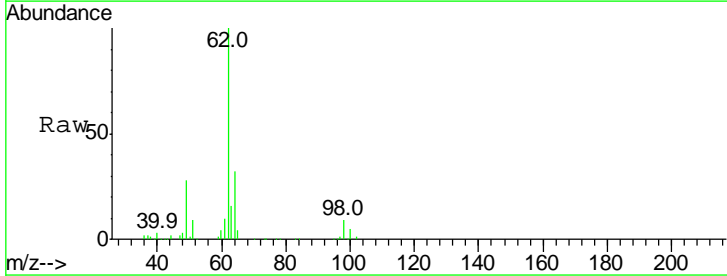
Instrument :
 MSVOA_W
 ClientSampled :
 VSTD00514

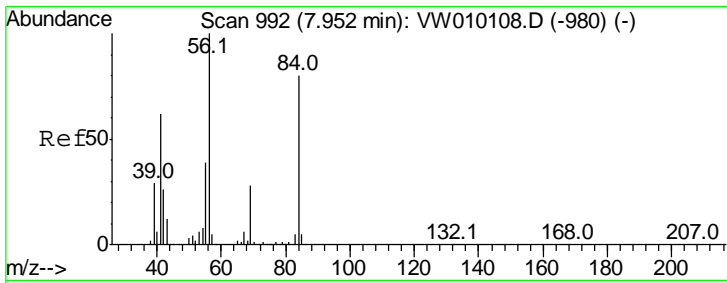
Tgt Ion: 83 Resp: 109960
 Ion Ratio Lower Upper
 83 100
 85 65.6 45.5 84.5



#27
 1,2-Dichloroethane
 Concen: 4.422 ug/L
 RT: 8.40 min Scan# 1065
 Delta R.T. -0.00 min
 Lab File: VW010107.D
 Acq: 24 Apr 2019 10:28

Tgt Ion: 62 Resp: 82214
 Ion Ratio Lower Upper
 62 100
 98 9.2 6.6 10.0

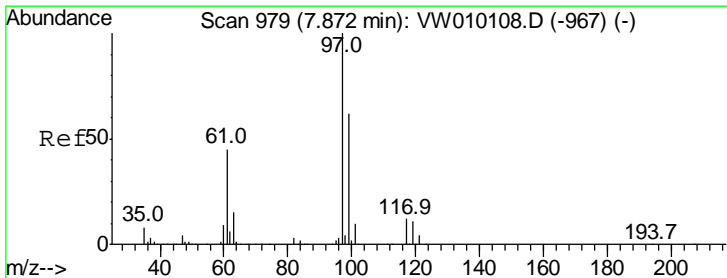
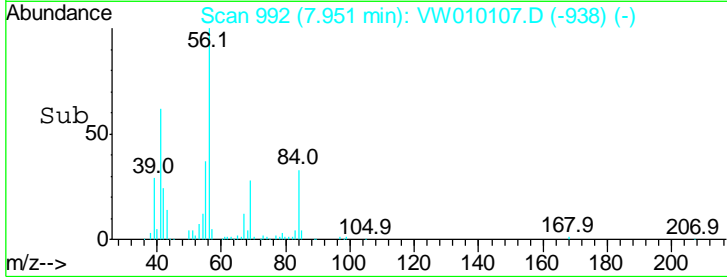
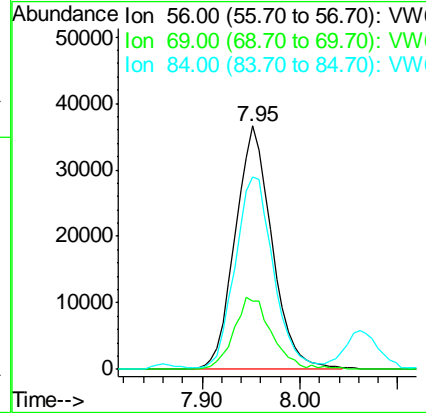
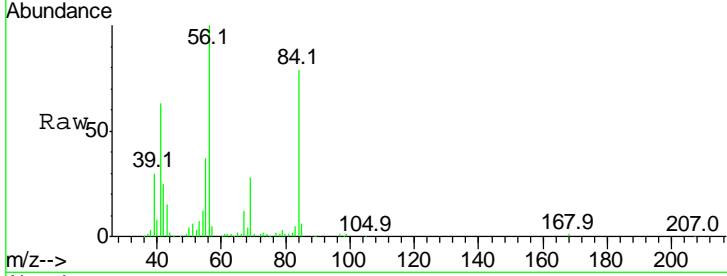




#30
 Cyclohexane
 Concen: 5.363 ug/L
 RT: 7.95 min Scan# 992
 Delta R.T. -0.00 min
 Lab File: VW010107.D
 Acq: 24 Apr 2019 10:28

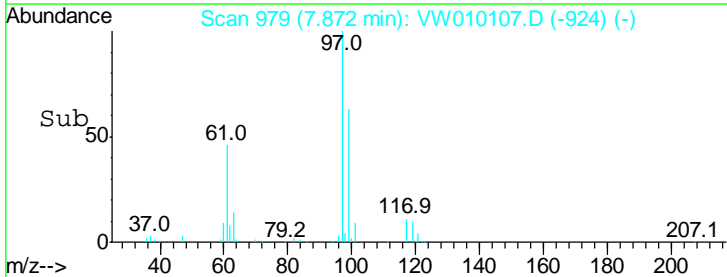
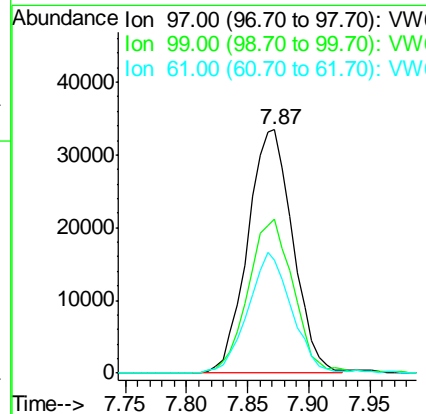
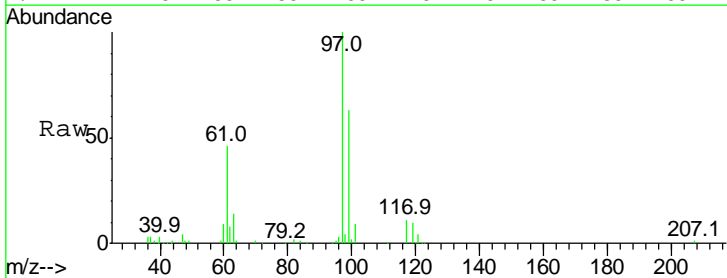
Instrument :
 MSVOA_W
 ClientSampled :
 VSTD00514

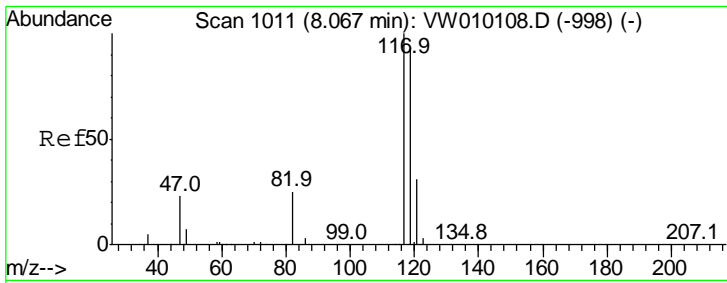
Tgt Ion	Resp	Lower	Upper
56	100		
69	29.8	23.4	35.0
84	81.3	65.5	98.3



#31
 1,1,1-Trichloroethane
 Concen: 5.215 ug/L
 RT: 7.87 min Scan# 979
 Delta R.T. 0.01 min
 Lab File: VW010107.D
 Acq: 24 Apr 2019 10:28

Tgt Ion	Resp	Lower	Upper
97	100		
99	62.5	50.8	76.2
61	47.5	39.3	58.9

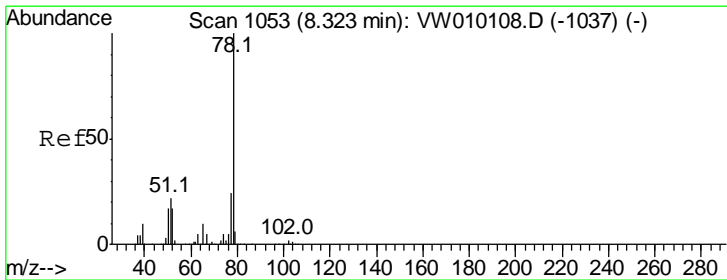
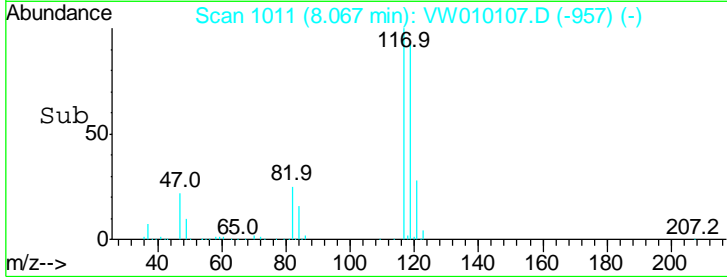
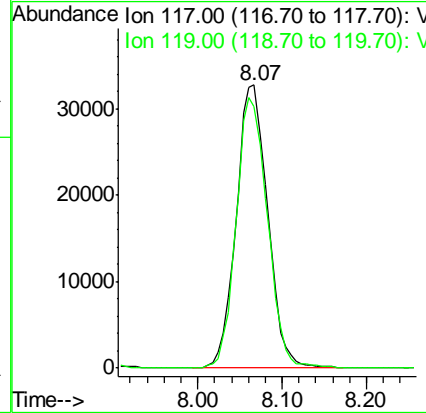
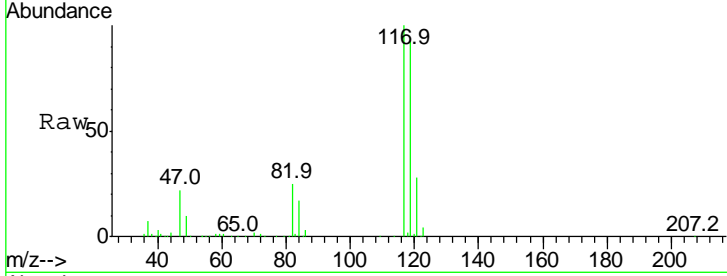




#32
 Carbon tetrachloride
 Concen: 5.110 ug/L
 RT: 8.07 min Scan# 1011
 Delta R.T. -0.00 min
 Lab File: VW010107.D
 Acq: 24 Apr 2019 10:28

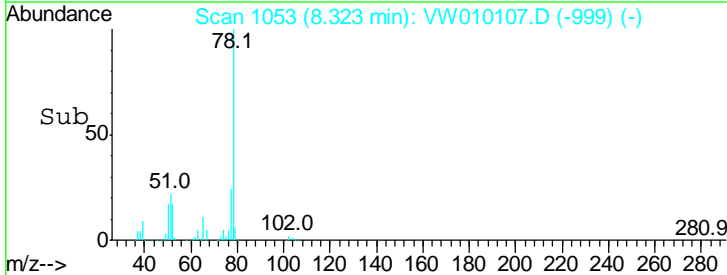
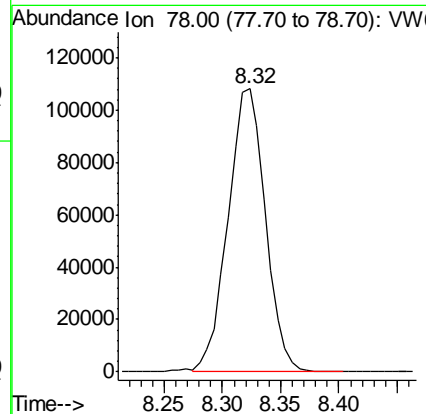
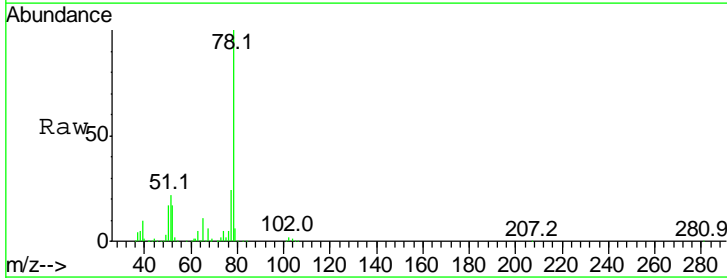
Instrument :
 MSVOA_W
ClientSampled :
 VSTD00514

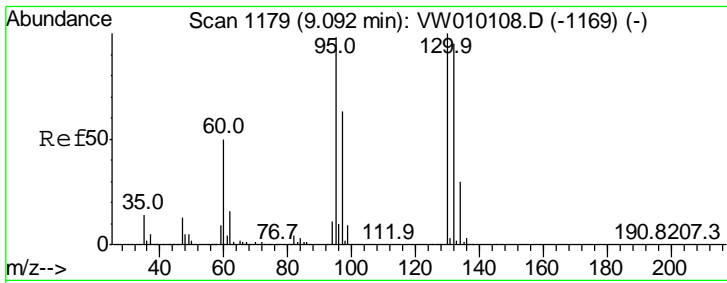
Tgt Ion: 117 Resp: 82759
 Ion Ratio Lower Upper
 117 100
 119 94.1 76.8 115.2



#34
 Benzene
 Concen: 5.183 ug/L
 RT: 8.32 min Scan# 1053
 Delta R.T. -0.00 min
 Lab File: VW010107.D
 Acq: 24 Apr 2019 10:28

Tgt Ion: 78 Resp: 241127

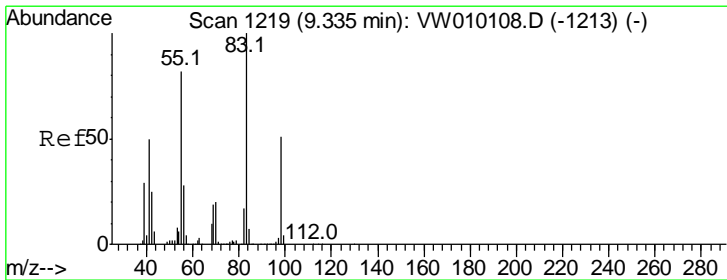
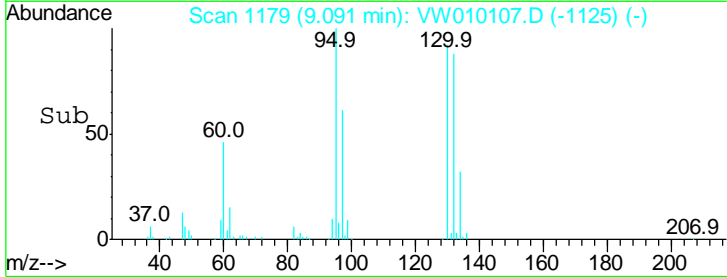
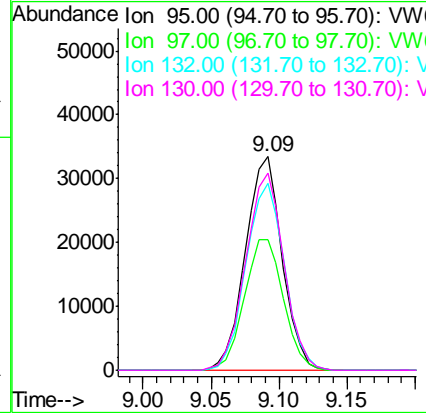
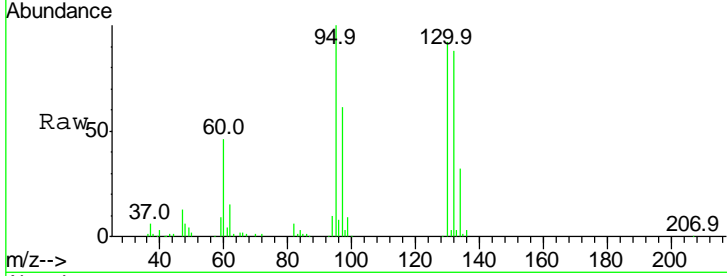




#35
 Trichloroethene
 Concen: 5.238 ug/L
 RT: 9.09 min Scan# 1179
 Delta R.T. -0.00 min
 Lab File: VW010107.D
 Acq: 24 Apr 2019 10:28

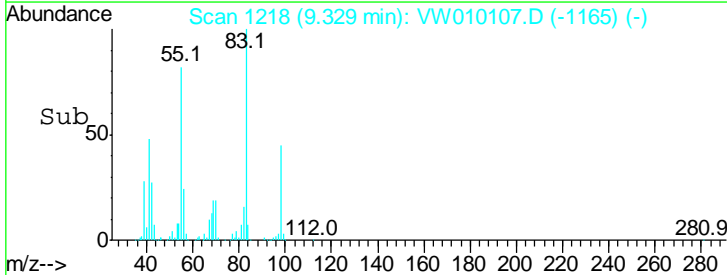
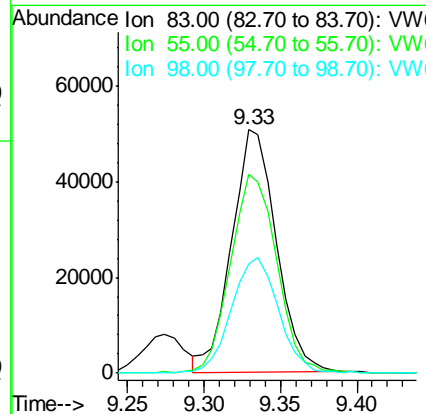
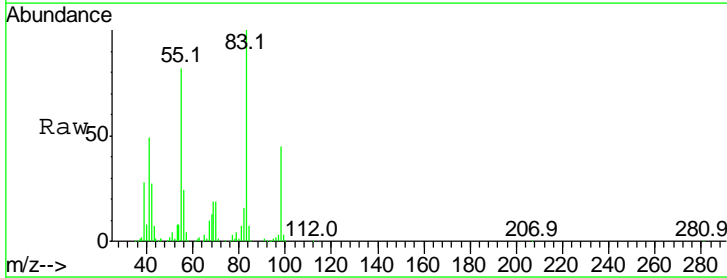
Instrument :
 MSVOA_W
 ClientSampled :
 VSTD00514

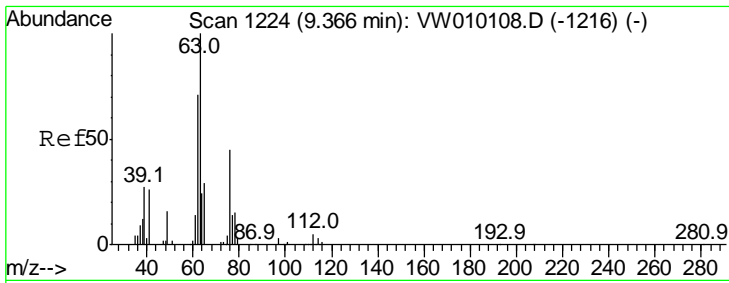
Tgt Ion	Resp	Lower	Upper
95	63359		
95	100		
97	64.9	45.3	84.1
132	91.6	65.6	121.8
130	95.8	68.5	127.3



#36
 Methylcyclohexane
 Concen: 5.262 ug/L
 RT: 9.33 min Scan# 1218
 Delta R.T. -0.01 min
 Lab File: VW010107.D
 Acq: 24 Apr 2019 10:28

Tgt Ion	Resp	Lower	Upper
83	102278		
83	100		
55	85.6	68.4	102.6
98	50.3	40.0	60.0

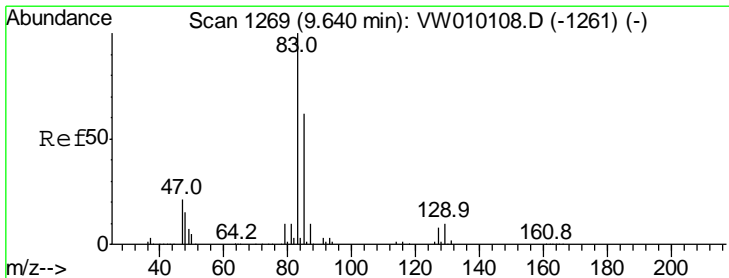
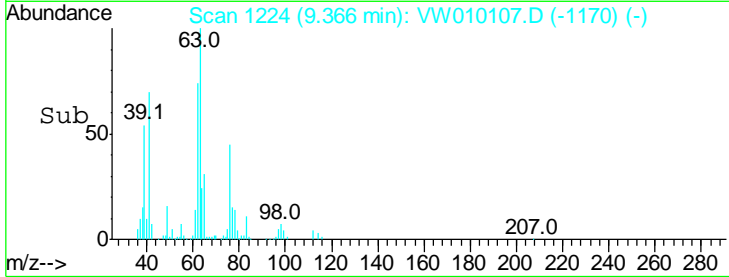
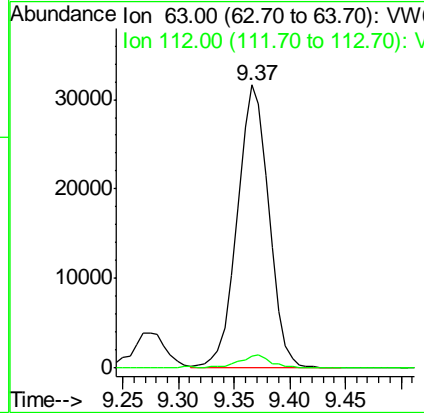
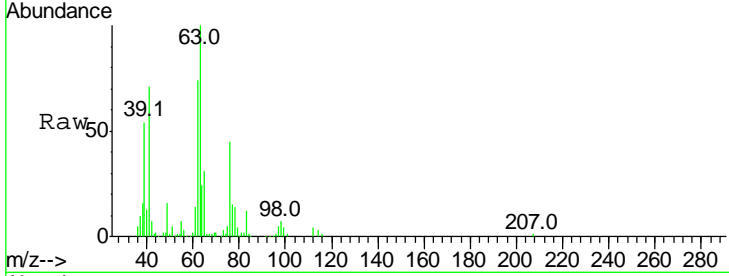




#40
 1,2-Dichloropropane
 Concen: 5.069 ug/L
 RT: 9.37 min Scan# 1224
 Delta R.T. -0.00 min
 Lab File: VW010107.D
 Acq: 24 Apr 2019 10:28

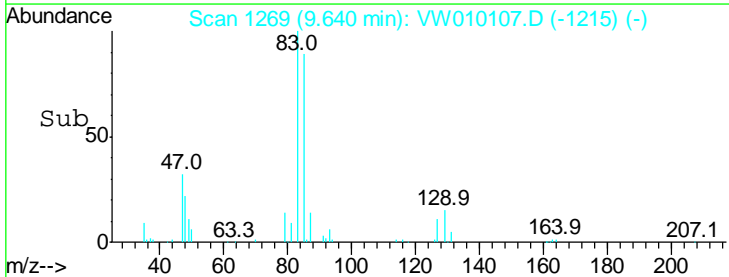
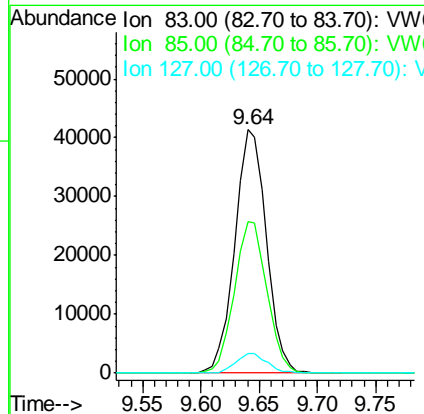
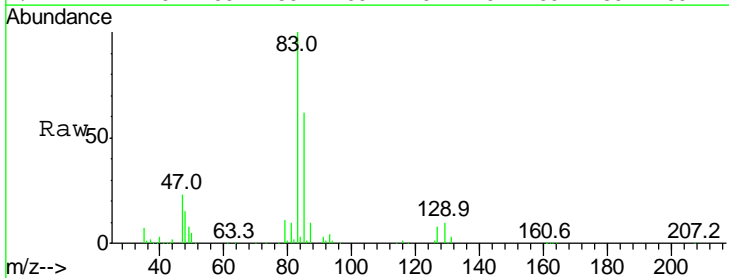
Instrument : MSVOA_W
 ClientSampled : VSTD00514

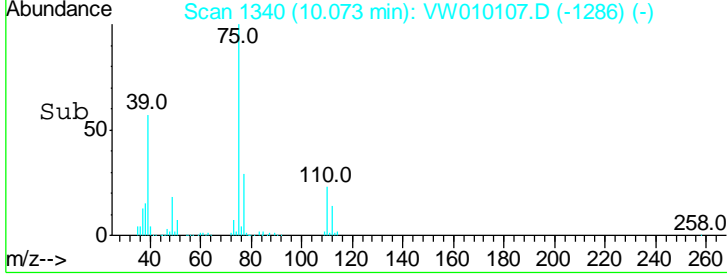
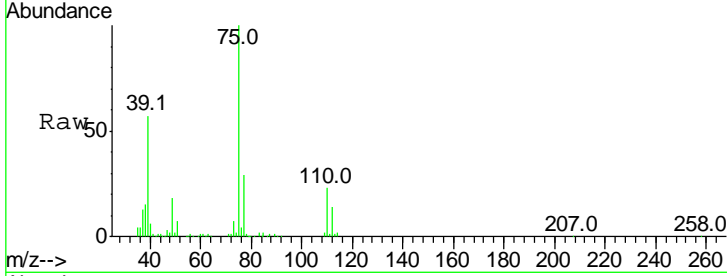
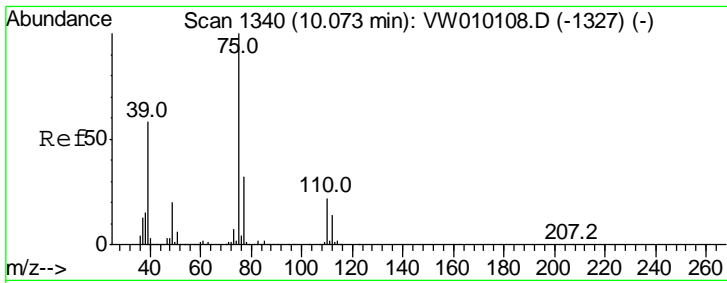
Tgt Ion	Resp	Lower	Upper
63	100		
112	4.7	3.4	5.2



#41
 Bromodichloromethane
 Concen: 4.657 ug/L
 RT: 9.64 min Scan# 1269
 Delta R.T. -0.00 min
 Lab File: VW010107.D
 Acq: 24 Apr 2019 10:28

Tgt Ion	Resp	Lower	Upper
83	100		
85	62.3	45.1	83.9
127	8.0	6.1	9.1

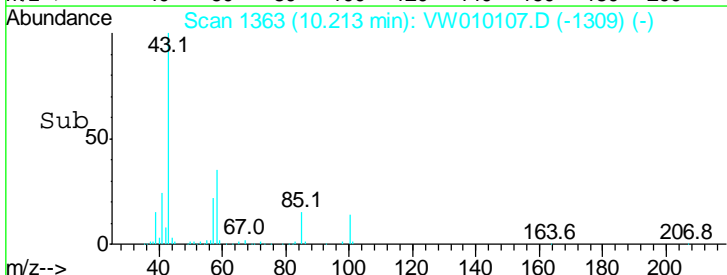
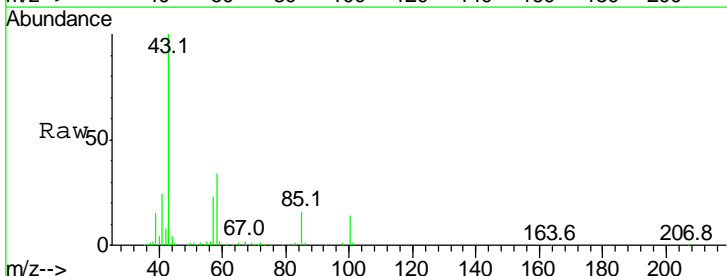
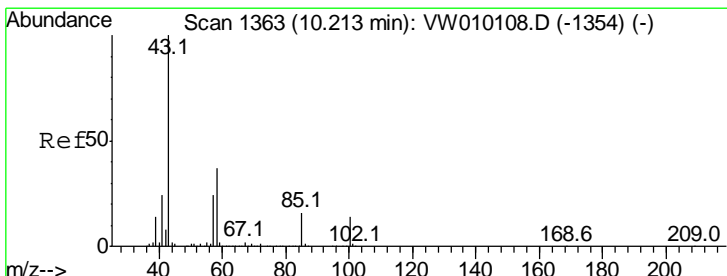
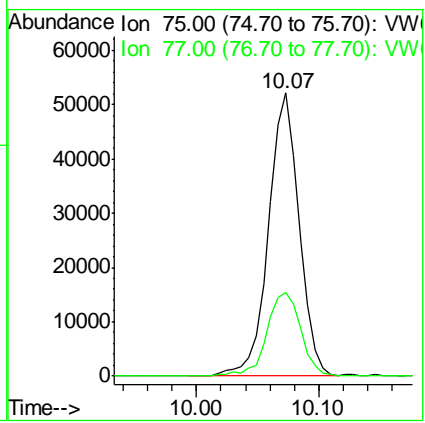




#42
 cis-1,3-Dichloropropene
 Concen: 4.791 ug/L
 RT: 10.07 min Scan# 1340
 Delta R.T. -0.00 min
 Lab File: VW010107.D
 Acq: 24 Apr 2019 10:28

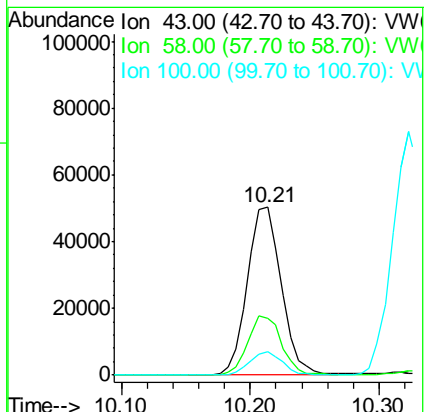
Instrument : MSVOA_W
 ClientSampleID : VSTD00514

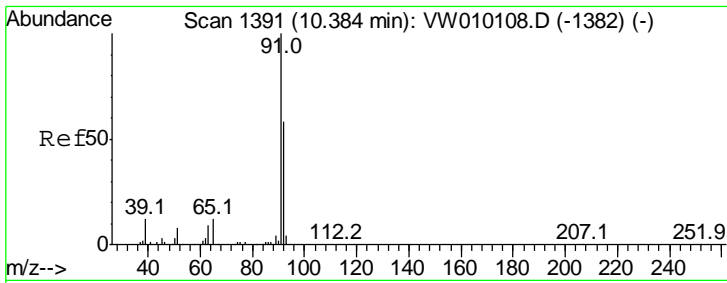
Tgt Ion	Resp	Lower	Upper
75	90888		
75	100		
77	29.4	21.8	40.4



#43
 4-Methyl-2-pentanone
 Concen: 9.055 ug/L
 RT: 10.21 min Scan# 1363
 Delta R.T. -0.00 min
 Lab File: VW010107.D
 Acq: 24 Apr 2019 10:28

Tgt Ion	Resp	Lower	Upper
43	91760		
43	100		
58	34.6	27.9	41.9
100	13.1	10.5	15.7

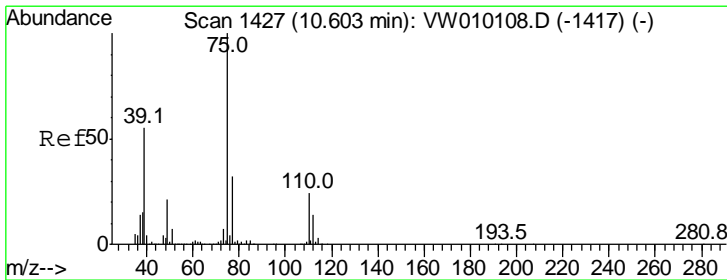
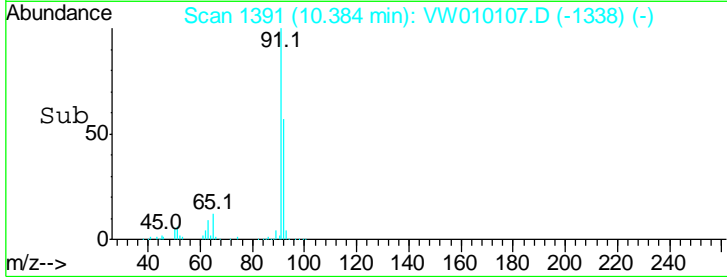
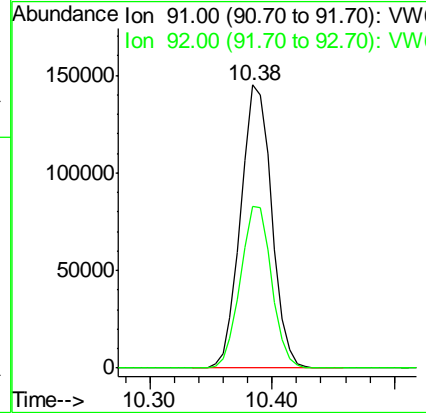
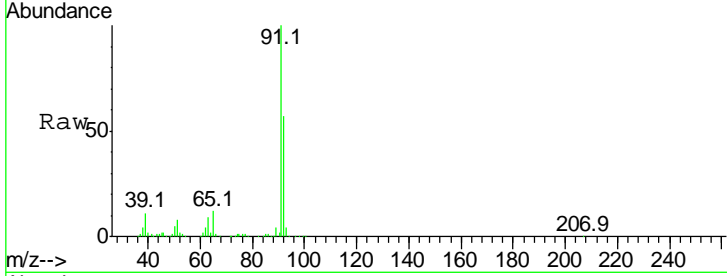




#44
 Toluene
 Concen: 5.158 ug/L
 RT: 10.38 min Scan# 1391
 Delta R.T. -0.01 min
 Lab File: VW010107.D
 Acq: 24 Apr 2019 10:28

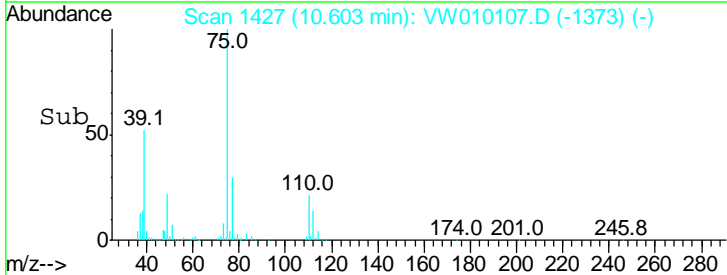
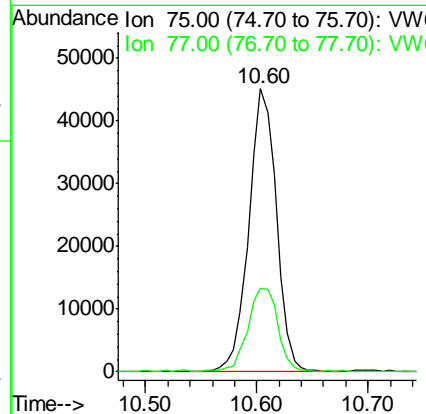
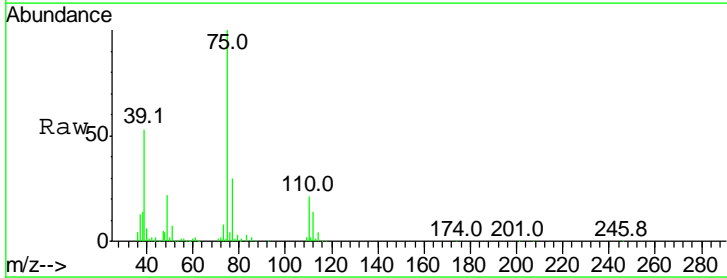
Instrument :
 MSVOA_W
 ClientSampled :
 VSTD00514

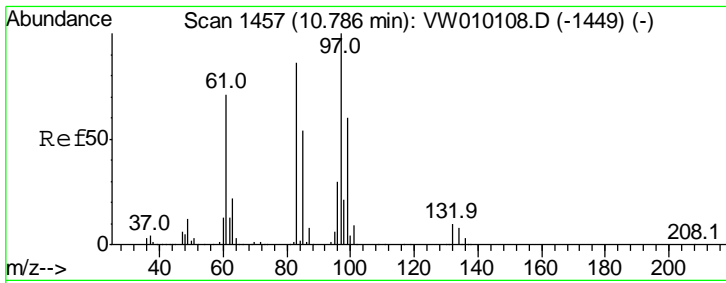
Tgt Ion: 91 Resp: 254565
 Ion Ratio Lower Upper
 91 100
 92 57.3 39.8 74.0



#45
 trans-1,3-Dichloropropene
 Concen: 4.661 ug/L
 RT: 10.60 min Scan# 1427
 Delta R.T. -0.00 min
 Lab File: VW010107.D
 Acq: 24 Apr 2019 10:28

Tgt Ion: 75 Resp: 78076
 Ion Ratio Lower Upper
 75 100
 77 29.7 22.0 41.0

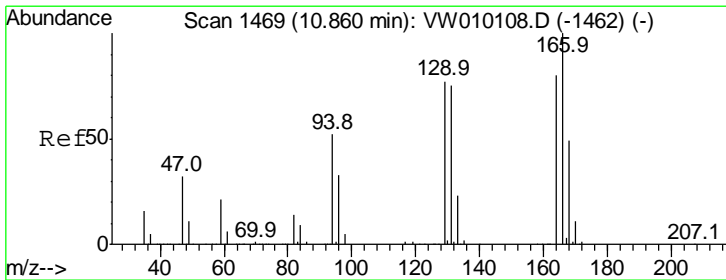
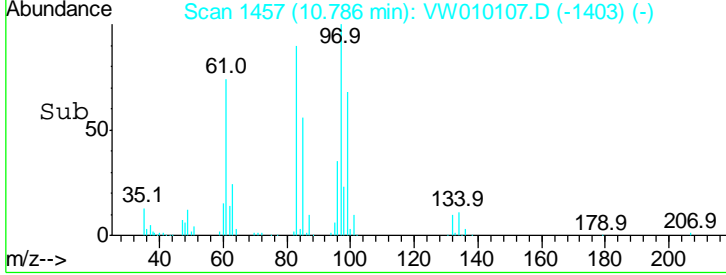
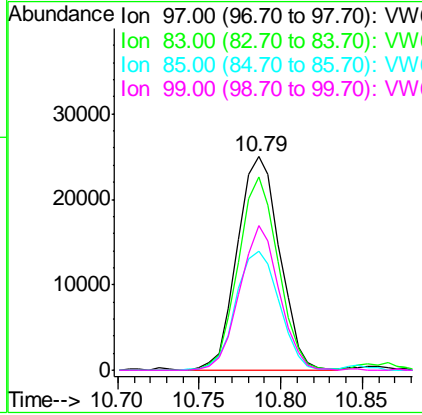
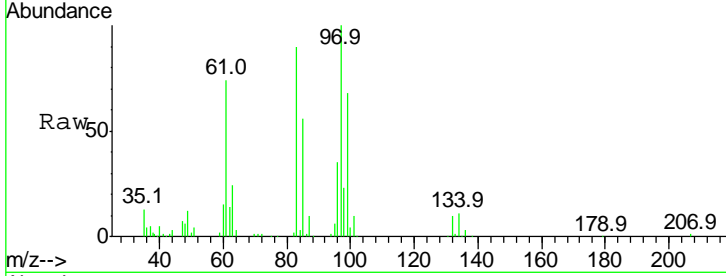




#46
 1,1,2-Trichloroethane
 Concen: 4.716 ug/L
 RT: 10.79 min Scan# 1457
 Delta R.T. -0.00 min
 Lab File: VW010107.D
 Acq: 24 Apr 2019 10:28

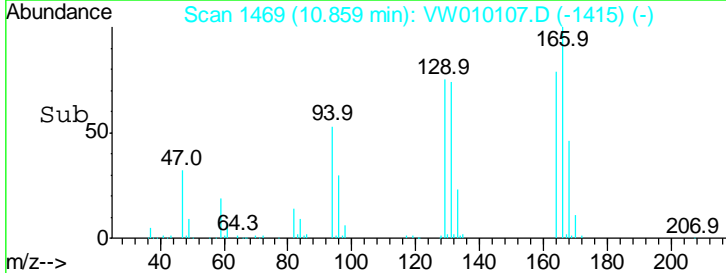
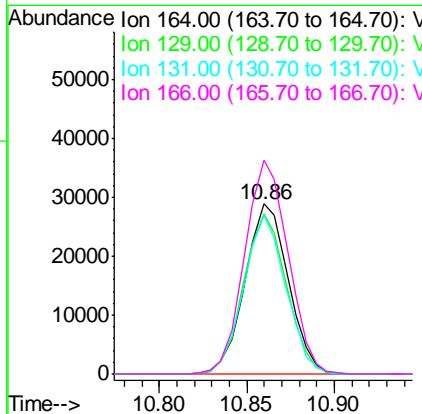
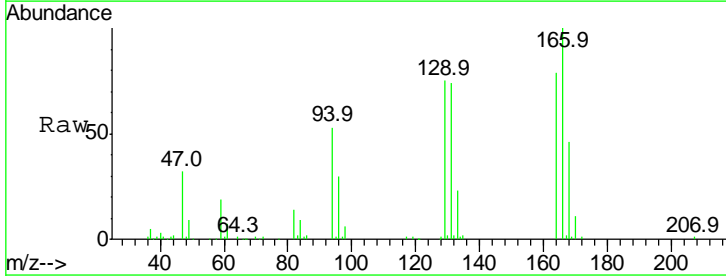
Instrument : MSVOA_W
 ClientSampled : VSTD00514

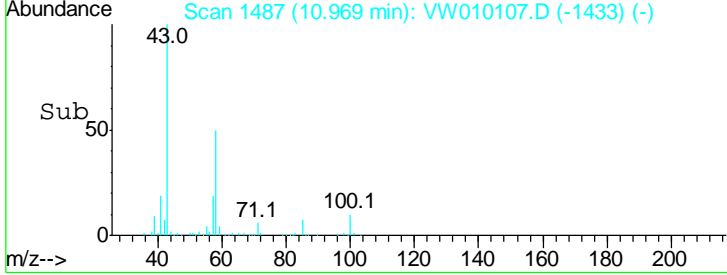
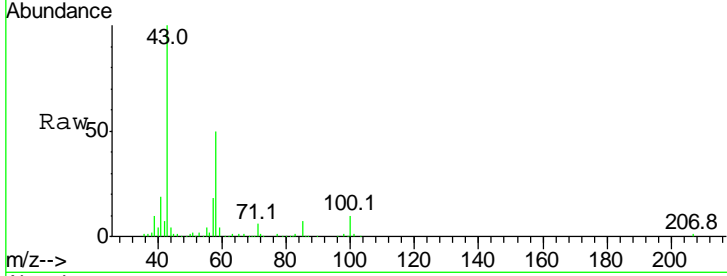
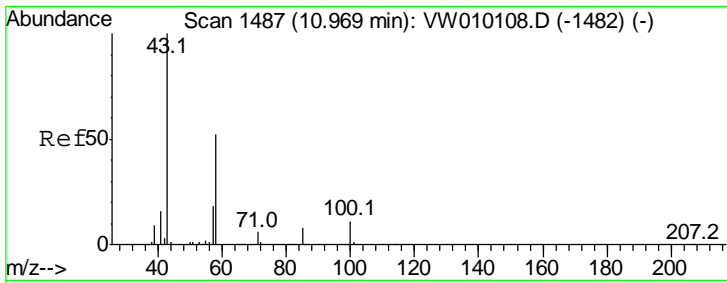
Tgt Ion	Resp	Lower	Upper
97	100		
83	90.5	59.1	109.7
85	55.7	39.3	73.1
99	67.6	43.6	81.0



#47
 Tetrachloroethene
 Concen: 5.243 ug/L
 RT: 10.86 min Scan# 1469
 Delta R.T. -0.00 min
 Lab File: VW010107.D
 Acq: 24 Apr 2019 10:28

Tgt Ion	Resp	Lower	Upper
164	100		
129	94.2	66.8	124.2
131	93.4	65.2	121.0
166	125.9	89.0	165.2

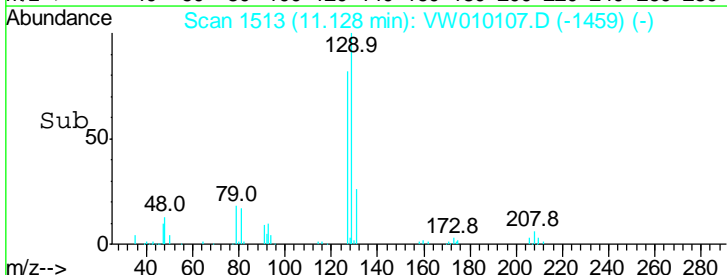
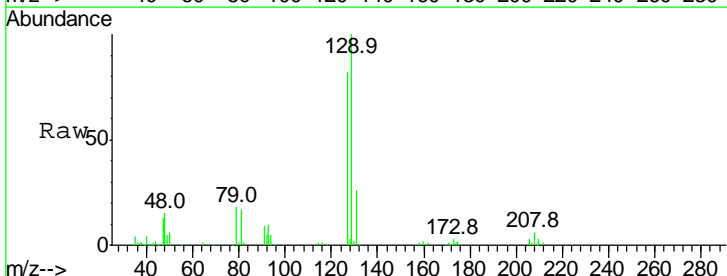
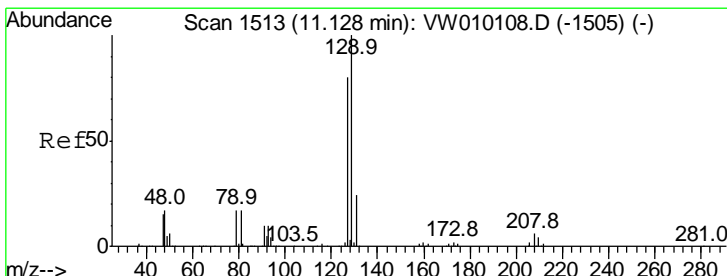
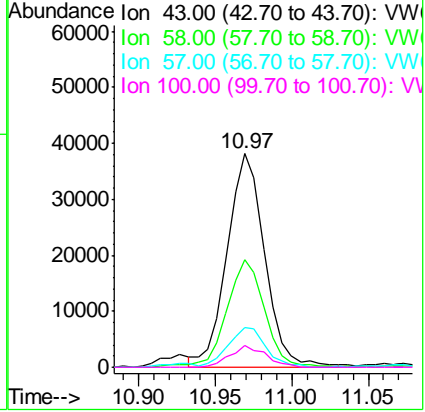




#49
 2-Hexanone
 Concen: 8.969 ug/L
 RT: 10.97 min Scan# 1487
 Delta R.T. -0.00 min
 Lab File: VW010107.D
 Acq: 24 Apr 2019 10:28

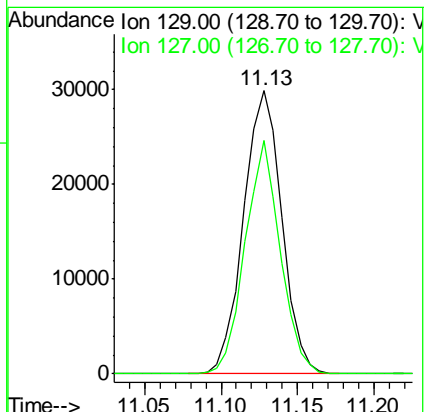
Instrument : MSVOA_W
 ClientSampled : VSTD00514

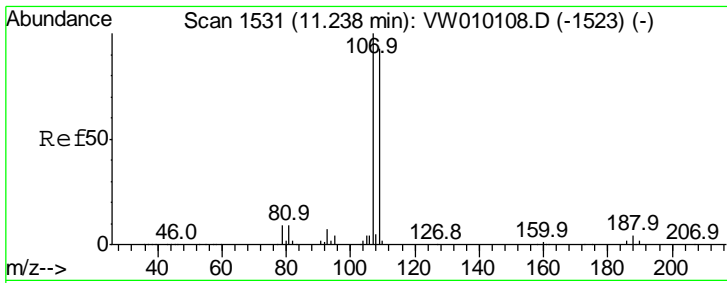
Tgt Ion	Resp	Lower	Upper
43	100		
58	50.7	39.8	59.8
57	18.8	14.1	21.1
100	9.7	8.4	12.6



#50
 Dibromochloromethane
 Concen: 4.568 ug/L
 RT: 11.13 min Scan# 1513
 Delta R.T. -0.00 min
 Lab File: VW010107.D
 Acq: 24 Apr 2019 10:28

Tgt Ion	Resp	Lower	Upper
129	100		
127	82.5	53.5	99.3

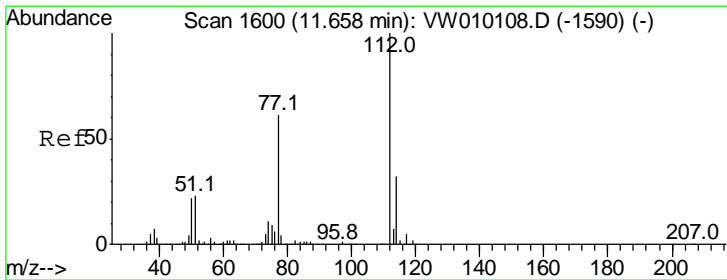
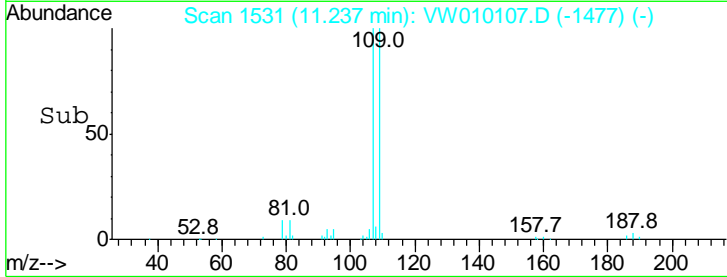
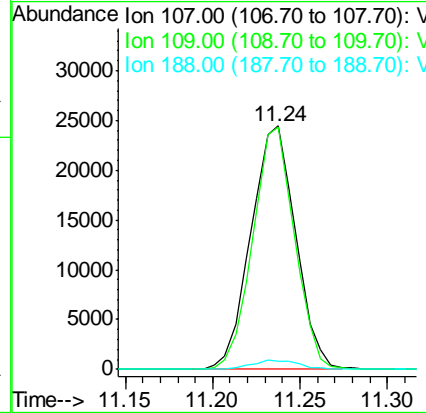
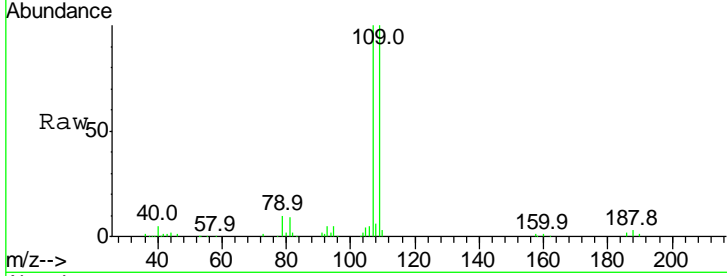




#51
 1,2-Dibromoethane
 Concen: 4.623 ug/L
 RT: 11.24 min Scan# 1531
 Delta R.T. -0.00 min
 Lab File: VW010107.D
 Acq: 24 Apr 2019 10:28

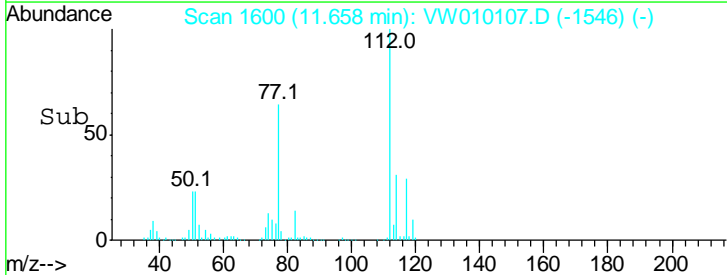
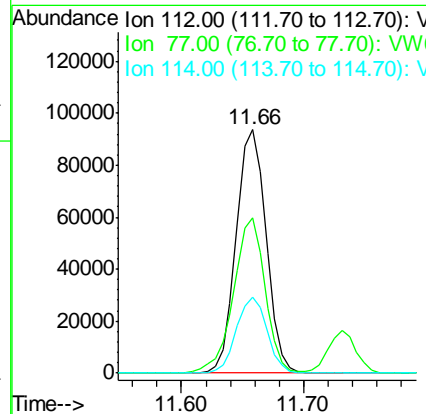
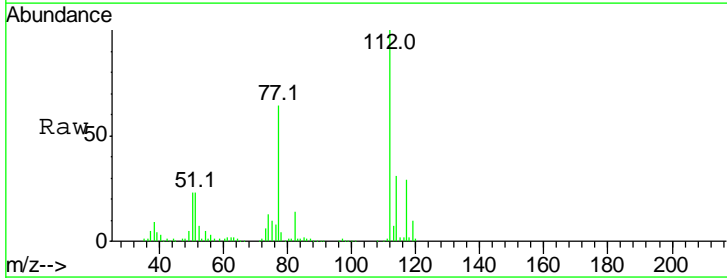
Instrument :
 MSVOA_W
 ClientSampled :
 VSTD00514

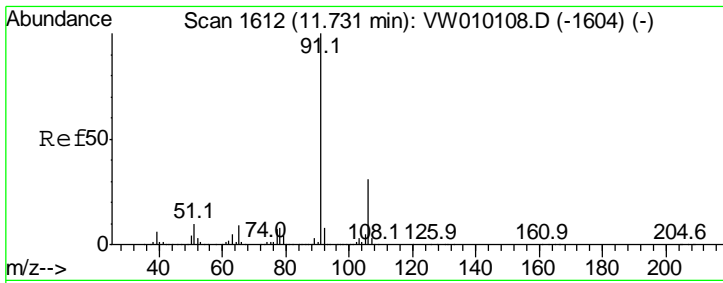
Tgt Ion	Resp	Lower	Upper
107	100		
109	99.6	66.4	123.4
188	3.4	2.7	4.1



#52
 Chlorobenzene
 Concen: 4.914 ug/L
 RT: 11.66 min Scan# 1600
 Delta R.T. -0.00 min
 Lab File: VW010107.D
 Acq: 24 Apr 2019 10:28

Tgt Ion	Resp	Lower	Upper
112	100		
77	63.6	50.2	75.4
114	31.3	22.7	42.3

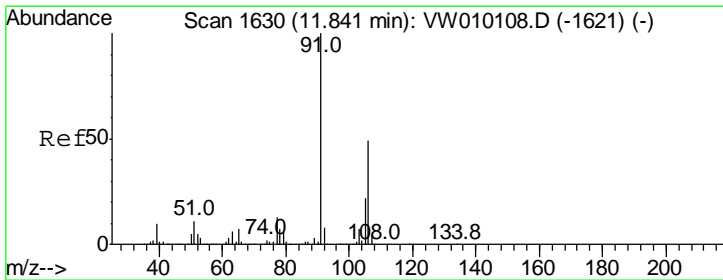
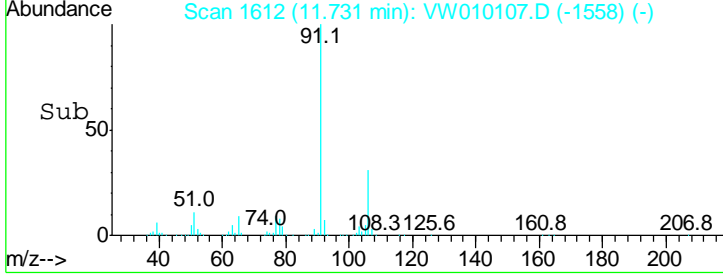
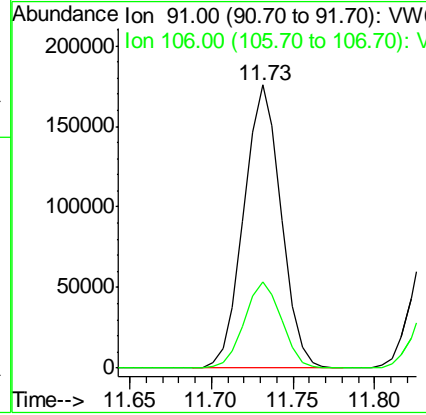
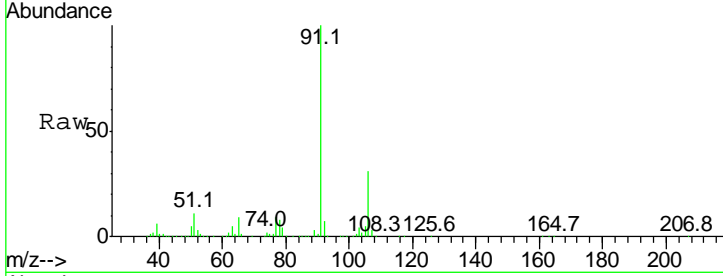




#53
 Ethylbenzene
 Concen: 5.066 ug/L
 RT: 11.73 min Scan# 1612
 Delta R.T. -0.00 min
 Lab File: VW010107.D
 Acq: 24 Apr 2019 10:28

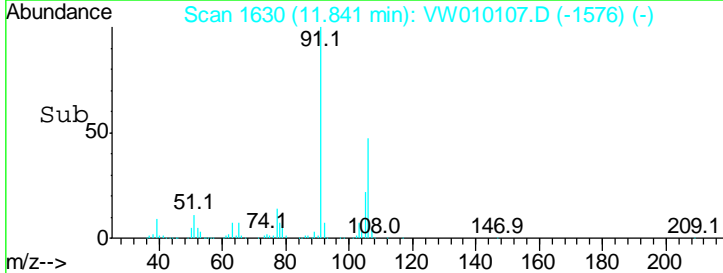
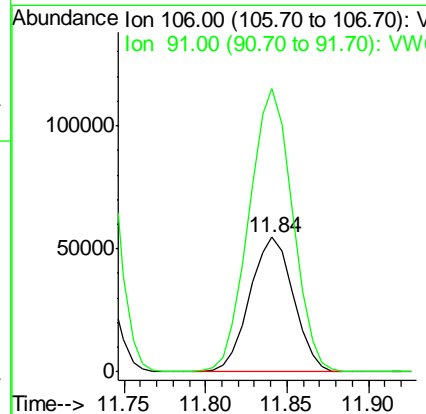
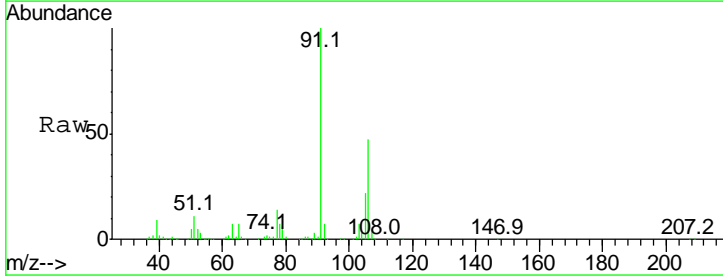
Instrument : MSVOA_W
 ClientSampled : VSTD00514

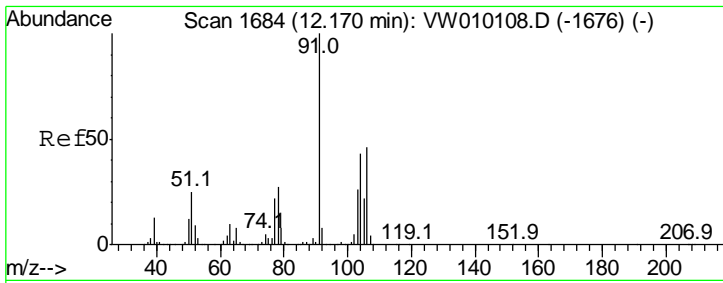
Tgt Ion: 91 Resp: 279494
 Ion Ratio Lower Upper
 91 100
 106 30.6 21.8 40.4



#54
 m,p-Xylene
 Concen: 5.052 ug/L
 RT: 11.84 min Scan# 1630
 Delta R.T. -0.00 min
 Lab File: VW010107.D
 Acq: 24 Apr 2019 10:28

Tgt Ion: 106 Resp: 101952
 Ion Ratio Lower Upper
 106 100
 91 210.8 143.4 266.2



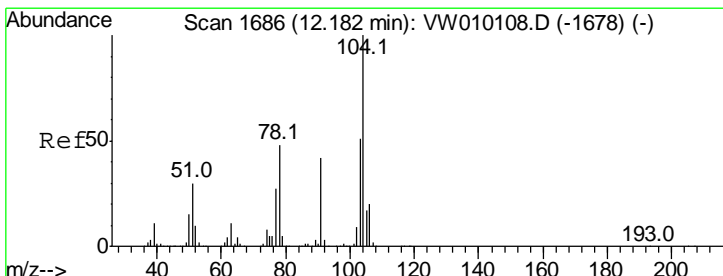
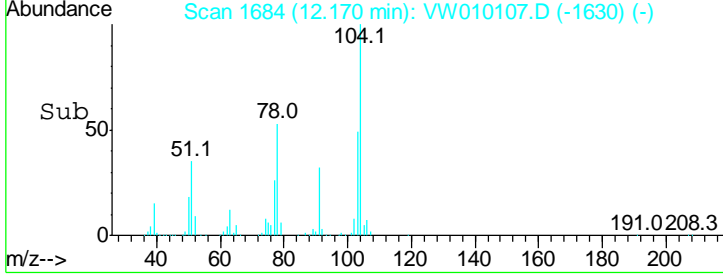
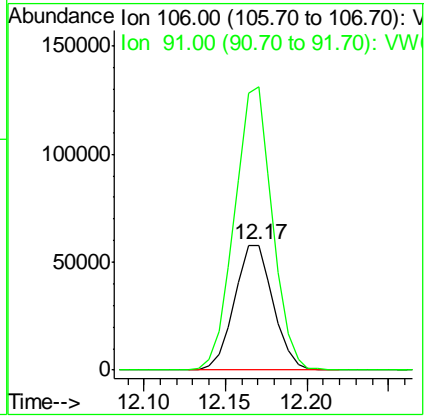
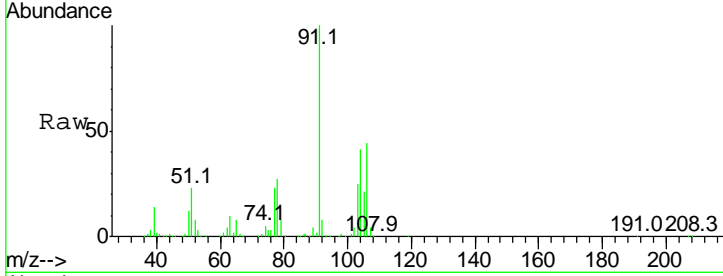


#55
 o-xylene
 Concen: 4.952 ug/L
 RT: 12.17 min Scan# 1684
 Delta R.T. -0.00 min
 Lab File: VW010107.D
 Acq: 24 Apr 2019 10:28

Instrument : MSVOA_W
 ClientSampled : VSTD00514

Tgt Ion: 106 Resp: 95844

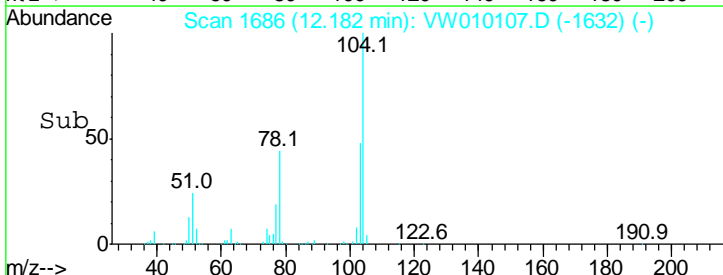
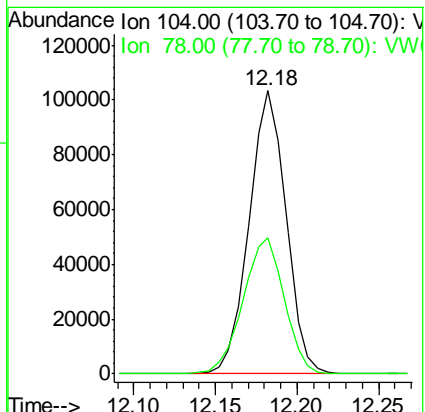
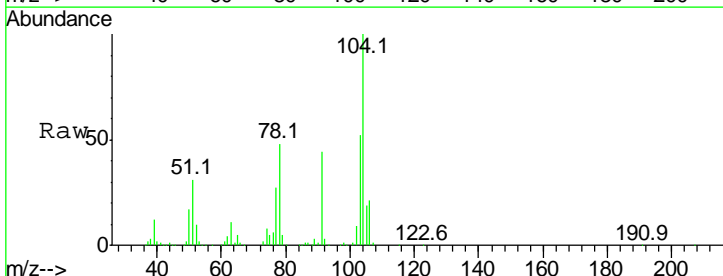
Ion	Ratio	Lower	Upper
106	100		
91	225.9	152.2	282.7

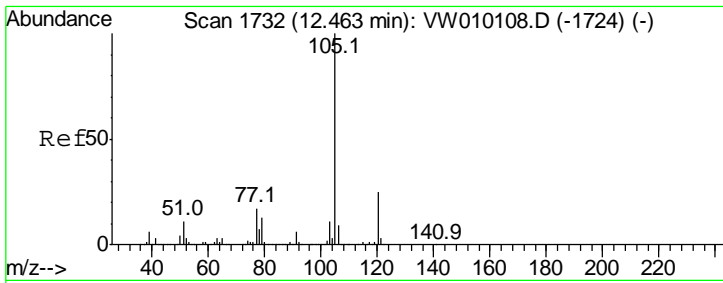


#56
 Styrene
 Concen: 4.827 ug/L
 RT: 12.18 min Scan# 1686
 Delta R.T. -0.00 min
 Lab File: VW010107.D
 Acq: 24 Apr 2019 10:28

Tgt Ion: 104 Resp: 163539

Ion	Ratio	Lower	Upper
104	100		
78	48.0	32.7	60.7

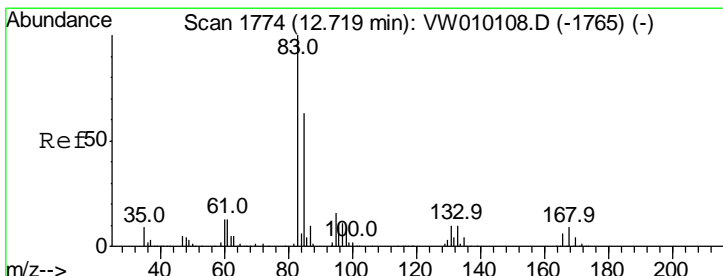
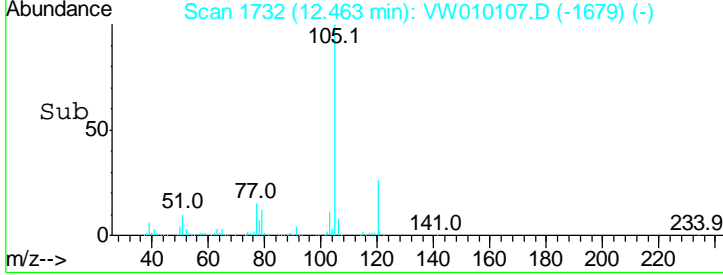
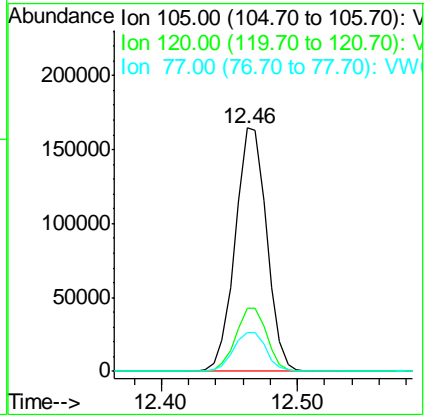
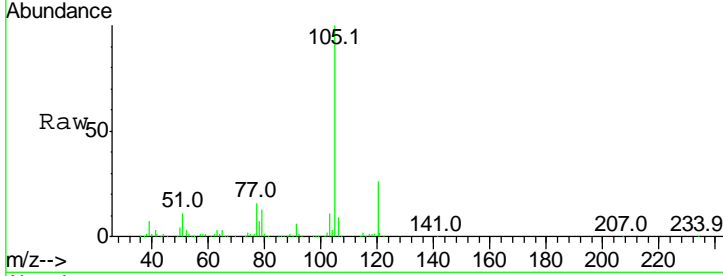




#57
 Isopropylbenzene
 Concen: 5.148 ug/L
 RT: 12.46 min Scan# 1732
 Delta R.T. -0.01 min
 Lab File: VW010107.D
 Acq: 24 Apr 2019 10:28

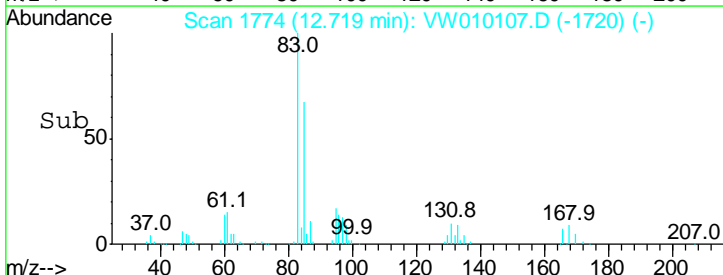
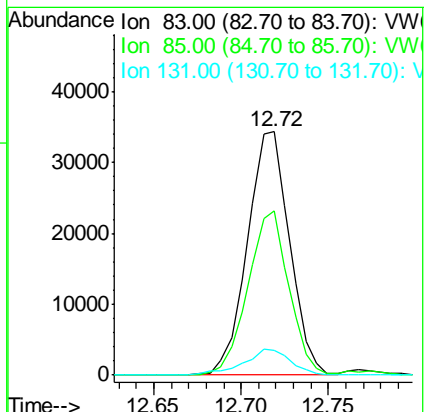
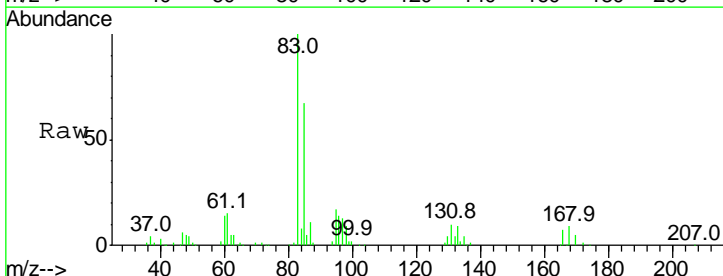
Instrument : MSVOA_W
 ClientSampled : VSTD00514

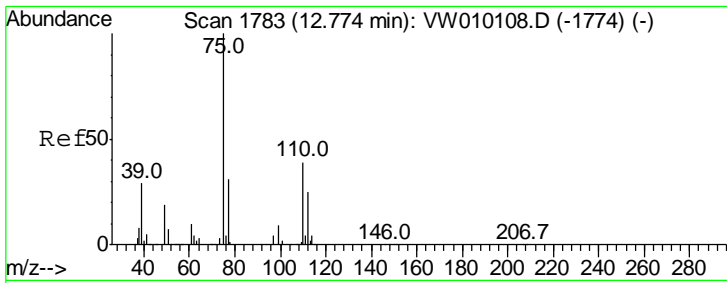
Tgt Ion	Resp	Lower	Upper
105	100		
120	25.9	20.6	30.8
77	16.7	13.4	20.2



#58
 1,1,2,2-Tetrachloroethane
 Concen: 4.575 ug/L
 RT: 12.72 min Scan# 1774
 Delta R.T. -0.00 min
 Lab File: VW010107.D
 Acq: 24 Apr 2019 10:28

Tgt Ion	Resp	Lower	Upper
83	100		
85	67.3	44.1	81.9
131	10.2	8.3	12.5

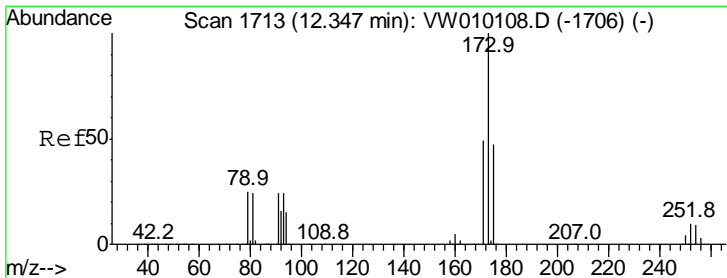
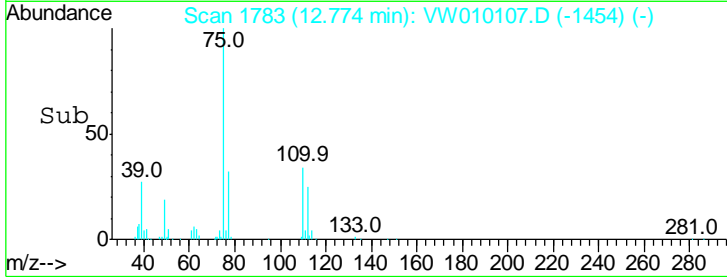
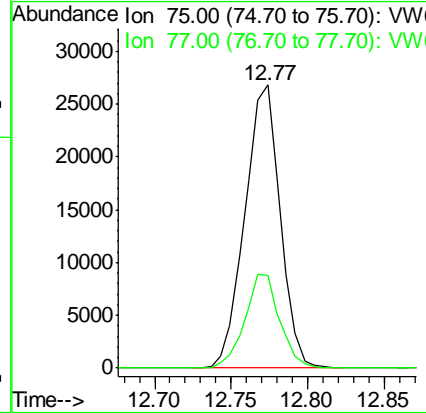
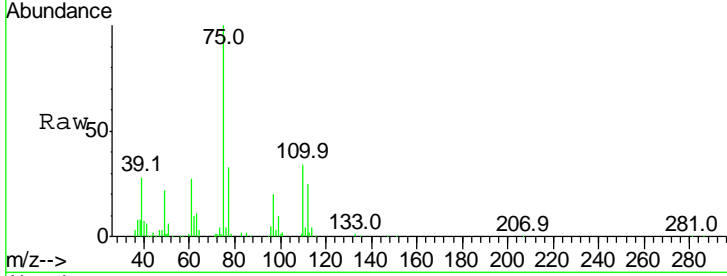




#59
 1,2,3-Trichloropropane
 Concen: 4.550 ug/L
 RT: 12.77 min Scan# 1783
 Delta R.T. 0.01 min
 Lab File: VW010107.D
 Acq: 24 Apr 2019 10:28

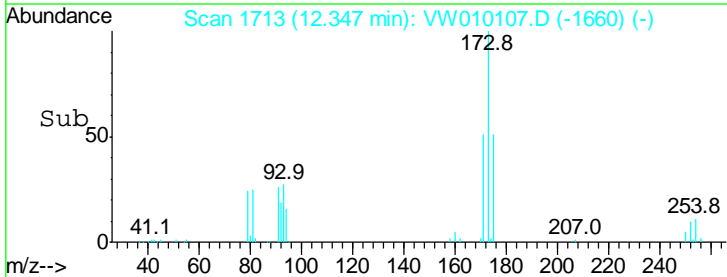
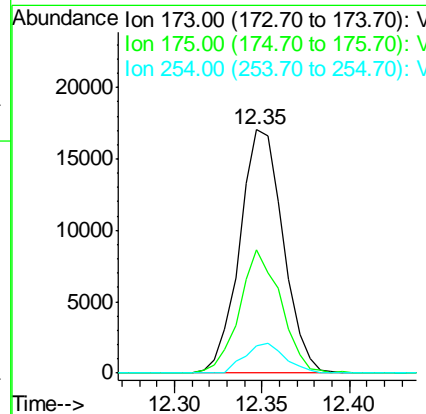
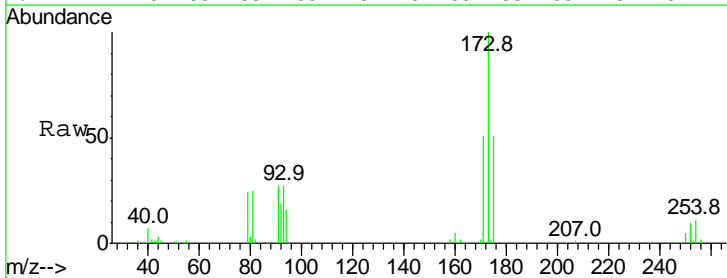
Instrument :
 MSVOA_W
 ClientSampled :
 VSTD00514

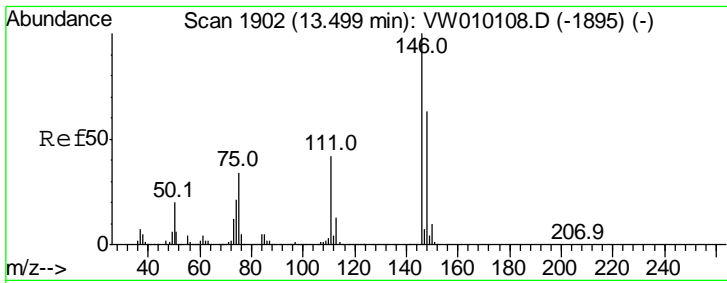
Tgt Ion: 75 Resp: 42985
 Ion Ratio Lower Upper
 75 100
 77 32.7 25.8 38.6



#62
 Bromoform
 Concen: 4.512 ug/L
 RT: 12.35 min Scan# 1713
 Delta R.T. -0.01 min
 Lab File: VW010107.D
 Acq: 24 Apr 2019 10:28

Tgt Ion: 173 Resp: 29494
 Ion Ratio Lower Upper
 173 100
 175 48.2 38.4 57.6
 254 11.2 7.7 11.5

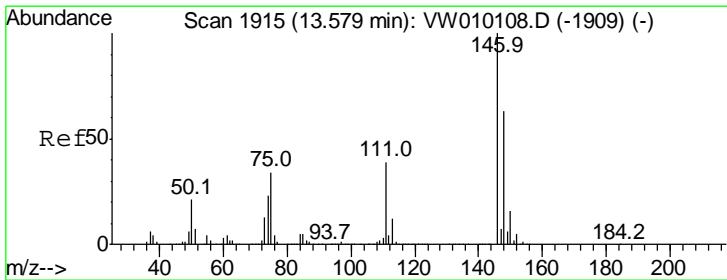
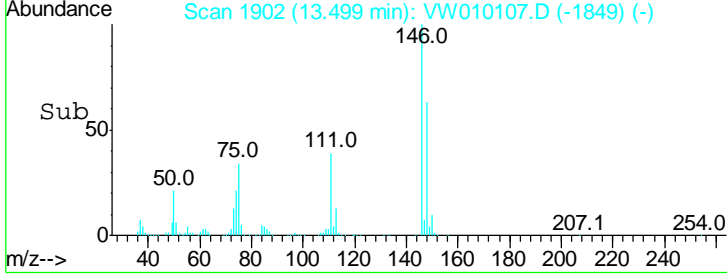
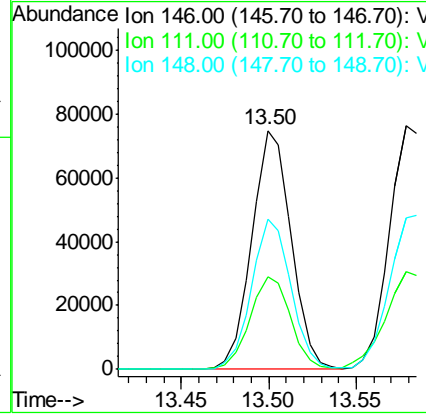
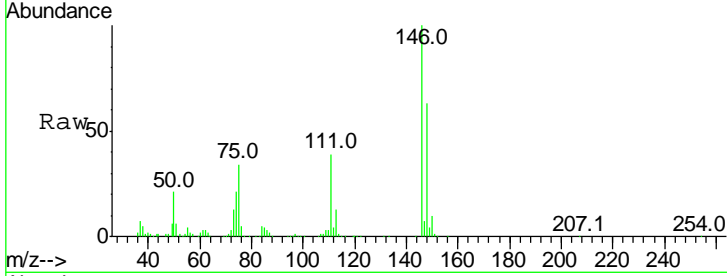




#63
 1,3-Dichlorobenzene
 Concen: 5.243 ug/L
 RT: 13.50 min Scan# 1902
 Delta R.T. -0.01 min
 Lab File: VW010107.D
 Acq: 24 Apr 2019 10:28

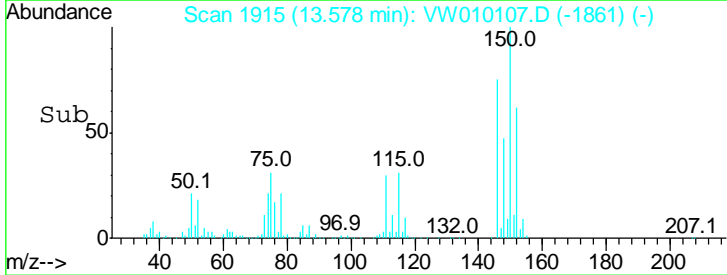
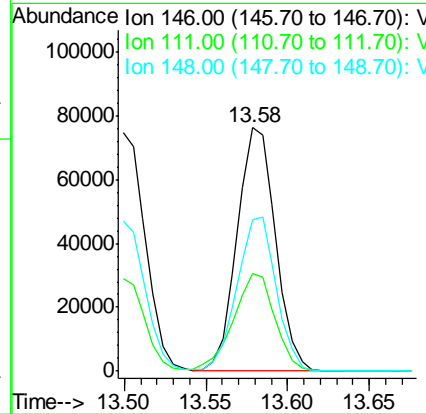
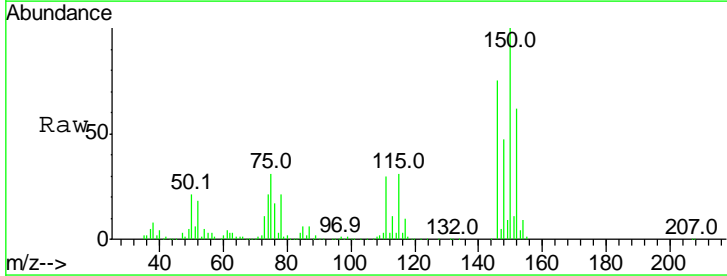
Instrument : MSVOA_W
 ClientSampled : VSTD00514

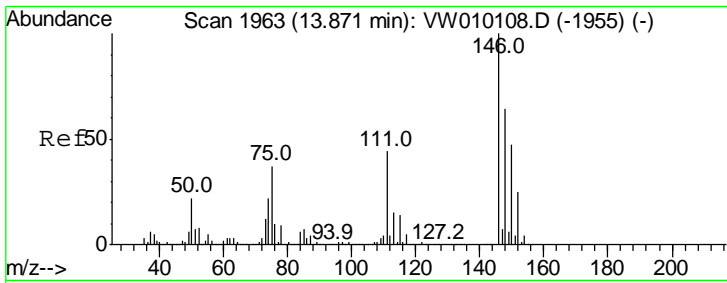
Tgt Ion	Resp	Lower	Upper
146	117899		
111	38.6	29.3	54.3
148	63.0	44.1	81.9



#64
 1,4-Dichlorobenzene
 Concen: 5.172 ug/L
 RT: 13.58 min Scan# 1915
 Delta R.T. -0.00 min
 Lab File: VW010107.D
 Acq: 24 Apr 2019 10:28

Tgt Ion	Resp	Lower	Upper
146	124992		
111	40.3	28.0	52.0
148	62.4	44.1	81.9

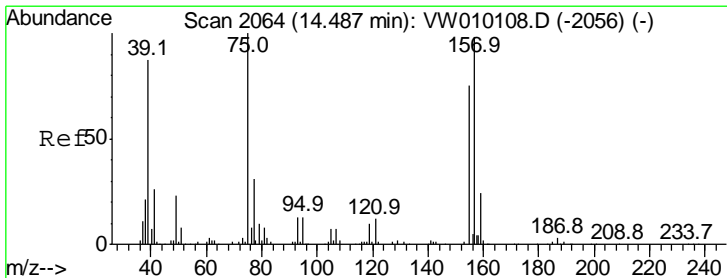
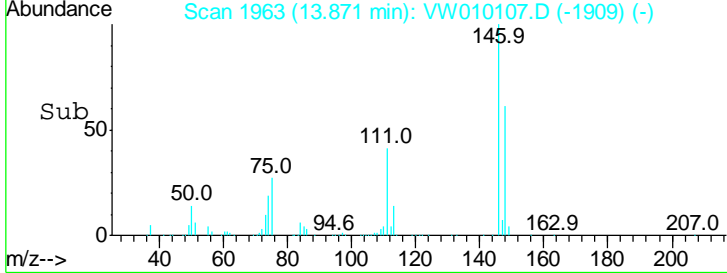
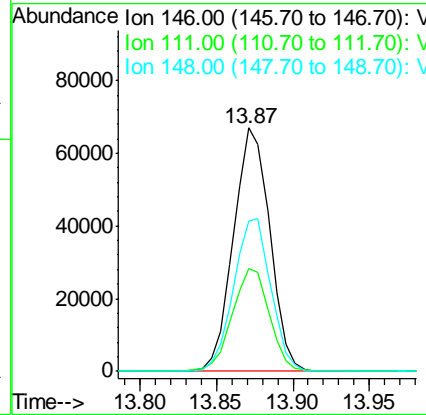
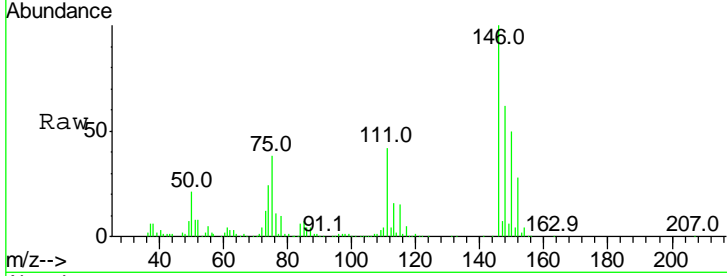




#65
 1,2-Dichlorobenzene
 Concen: 5.002 ug/L
 RT: 13.87 min Scan# 1963
 Delta R.T. -0.00 min
 Lab File: VW010107.D
 Acq: 24 Apr 2019 10:28

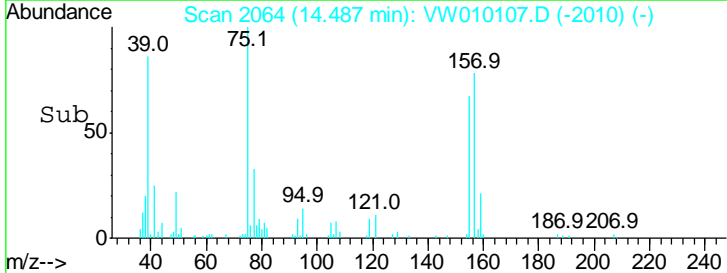
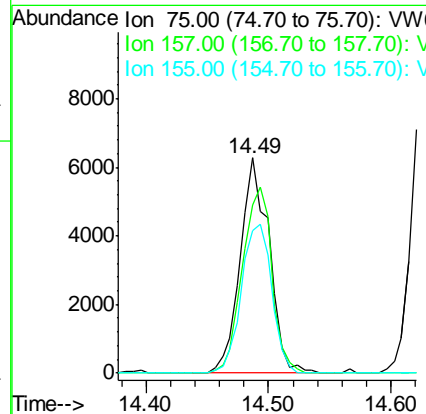
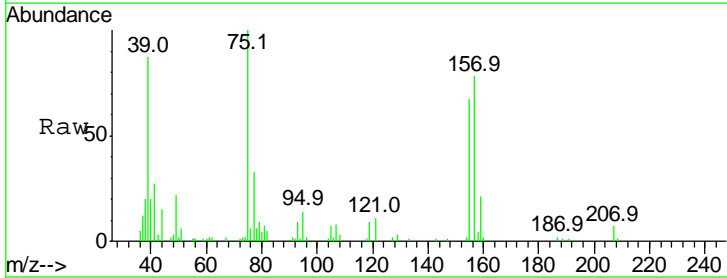
Instrument :
 MSVOA_W
 ClientSampled :
 VSTD00514

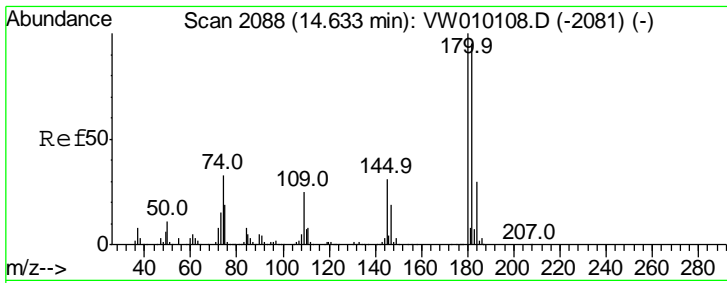
Tgt Ion	Resp	Lower	Upper
146	110378		
111	42.2	35.0	52.6
148	61.6	50.4	75.6



#66
 1,2-Dibromo-3-chloropropane
 Concen: 4.595 ug/L
 RT: 14.49 min Scan# 2064
 Delta R.T. -0.00 min
 Lab File: VW010107.D
 Acq: 24 Apr 2019 10:28

Tgt Ion	Resp	Lower	Upper
75	10261		
157	78.0	73.3	109.9
155	66.6	58.6	88.0

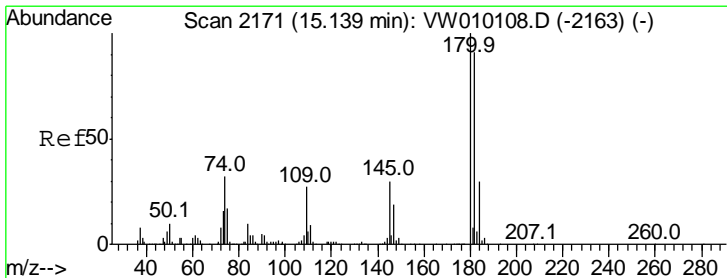
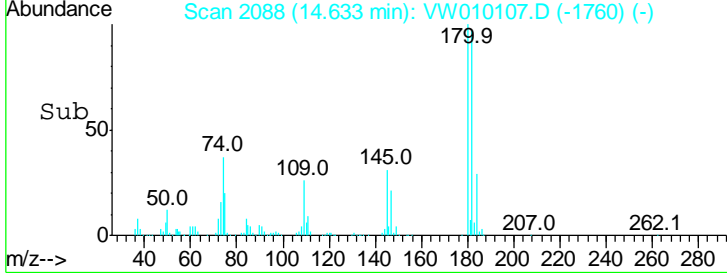
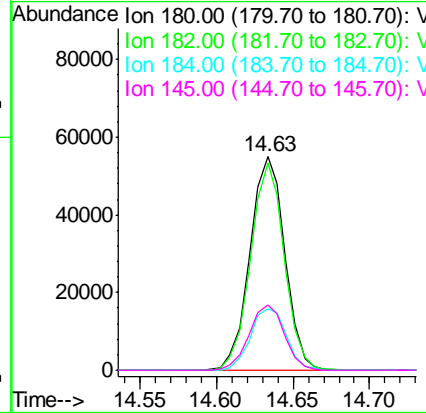
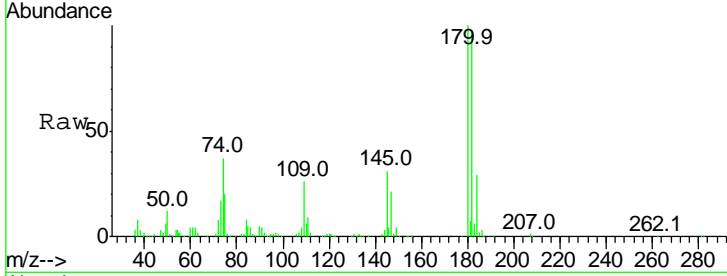




#67
 1,3,5-Trichlorobenzene
 Concen: 5.283 ug/L
 RT: 14.63 min Scan# 2088
 Delta R.T. -0.00 min
 Lab File: VW010107.D
 Acq: 24 Apr 2019 10:28

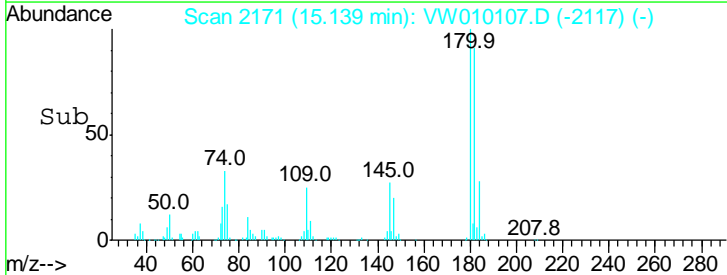
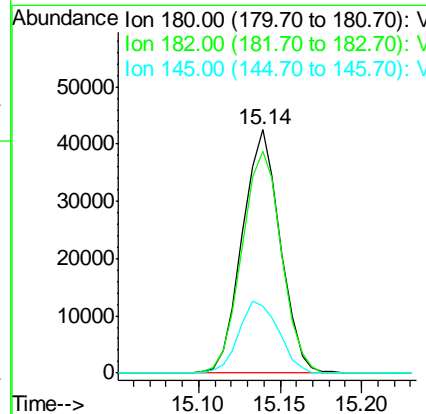
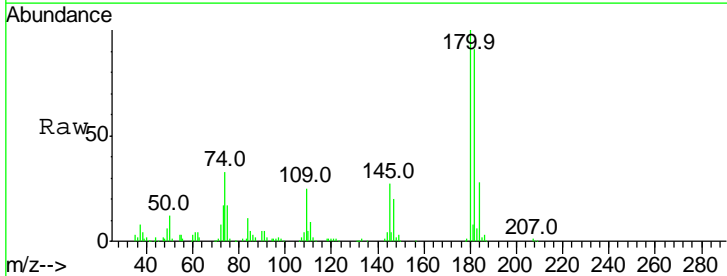
Instrument : MSVOA_W
 ClientSampled : VSTD00514

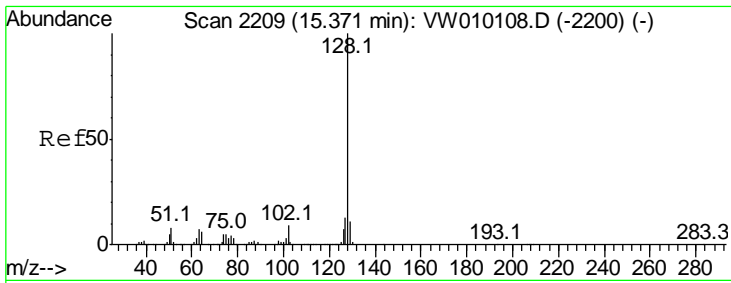
Tgt Ion	Resp	Lower	Upper
180	100		
182	93.8	76.8	115.2
184	30.0	24.0	36.0
145	30.9	24.4	36.6



#68
 1,2,4-trichlorobenzene
 Concen: 5.115 ug/L
 RT: 15.14 min Scan# 2171
 Delta R.T. -0.00 min
 Lab File: VW010107.D
 Acq: 24 Apr 2019 10:28

Tgt Ion	Resp	Lower	Upper
180	100		
182	95.1	75.4	113.0
145	31.0	25.0	37.4

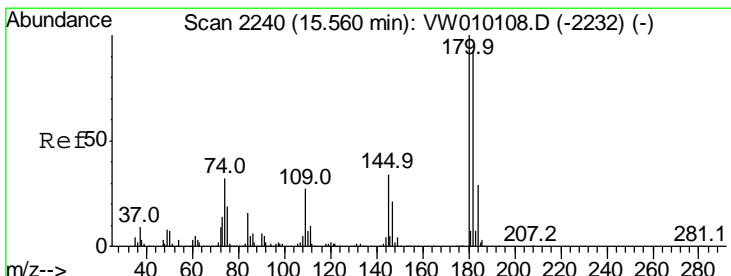
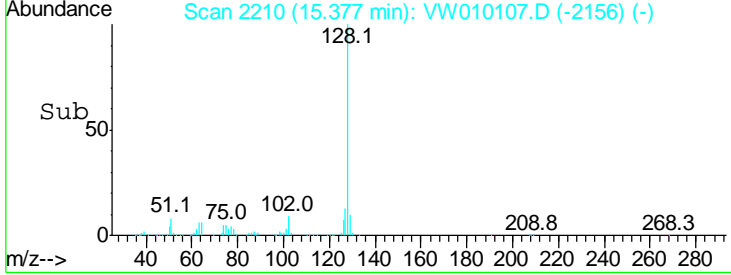
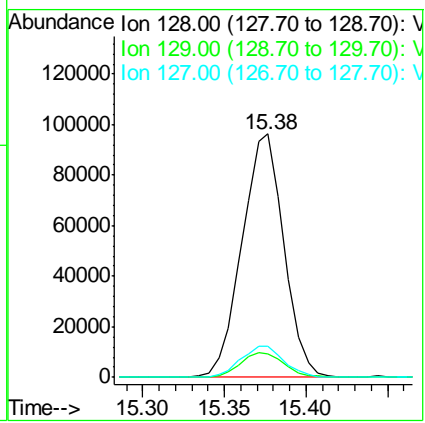
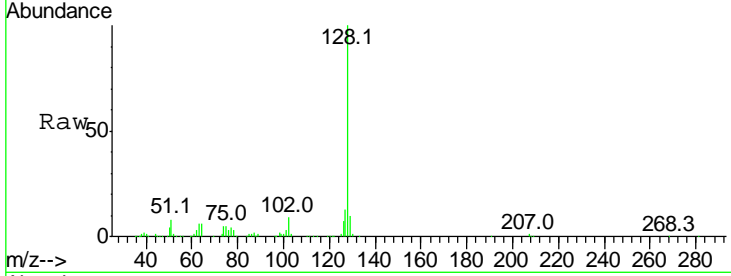




#69
 Naphthalene
 Concen: 5.933 ug/L
 RT: 15.38 min Scan# 2210
 Delta R.T. -0.00 min
 Lab File: VW010107.D
 Acq: 24 Apr 2019 10:28

Instrument : MSVOA_W
 ClientSampled : VSTD00514

Tgt Ion	Resp	Lower	Upper
128	171827		
129	10.5	8.6	12.8
127	13.3	10.6	16.0



#70
 1,2,3-Trichlorobenzene
 Concen: 5.127 ug/L
 RT: 15.56 min Scan# 2240
 Delta R.T. -0.01 min
 Lab File: VW010107.D
 Acq: 24 Apr 2019 10:28

Tgt Ion	Resp	Lower	Upper
180	66016		
182	93.7	76.0	114.0
145	32.8	26.3	39.5

