

Data Path : Z:\VOASRV\HPCHEM1\MSVOA_W\DATA\VW042419\
 Data File : VW010147.D
 Acq On : 25 Apr 2019 17:37
 Operator : SY/VA
 Sample : K2481-21
 Misc : 5.09G/10ML/MSVOA_W/SOIL
 ALS Vial : 1 Sample Multiplier: 1

Instrument :
 MSVOA_W
 ClientSampleID :
 GAHX4

Quant Time: Apr 26 01:08:50 2019
 Quant Method : Z:\VOASRV\HPCHEM1\MSVOA_W\METHOD\SOM2WLM042419S.M
 Quant Title : VOC Analysis
 QLast Update : Fri Apr 26 01:05:00 2019
 Response via : Initial Calibration

| Internal Standards | R.T. | QIon | Response | Conc | Units | Dev(Min) |
|----------------------------|-------|------|----------|-------|-------|----------|
| 1) 1,4-Difluorobenzene | 8.84 | 114 | 677576 | 25.00 | ug/L | 0.00 |
| 28) Chlorobenzene-d5 | 11.63 | 117 | 636841 | 25.00 | ug/L | 0.00 |
| 60) 1,4-Dichlorobenzene-d4 | 13.56 | 152 | 288070 | 25.00 | ug/L | 0.00 |

System Monitoring Compounds

| | | | | | | |
|--------------------------------|--------|-------|----------|----------|------|--------|
| 4) Vinyl Chloride-d3 | 2.36 | 65 | 145094 | 22.40 | ug/L | 0.00 |
| Spiked Amount | 25.000 | Range | 30 - 150 | Recovery | = | 89.60% |
| 7) Chloroethane-d5 | 2.89 | 69 | 119136 | 22.26 | ug/L | 0.00 |
| Spiked Amount | 25.000 | Range | 30 - 150 | Recovery | = | 89.04% |
| 10) 1,1-Dichloroethene-d2 | 4.01 | 63 | 243952 | 12.83 | ug/L | -0.01 |
| Spiked Amount | 25.000 | Range | 45 - 110 | Recovery | = | 51.32% |
| 20) 2-Butanone-d5 | 7.08 | 46 | 105409 | 34.46 | ug/L | 0.00 |
| Spiked Amount | 50.000 | Range | 20 - 135 | Recovery | = | 68.92% |
| 24) Chloroform-d | 7.64 | 84 | 407967 | 22.61 | ug/L | 0.00 |
| Spiked Amount | 25.000 | Range | 40 - 150 | Recovery | = | 90.44% |
| 26) 1,2-Dichloroethane-d4 | 8.31 | 65 | 221303 | 20.98 | ug/L | 0.00 |
| Spiked Amount | 25.000 | Range | 70 - 130 | Recovery | = | 83.92% |
| 29) Benzene-d6 | 8.27 | 84 | 820690 | 22.75 | ug/L | 0.00 |
| Spiked Amount | 25.000 | Range | 20 - 135 | Recovery | = | 91.00% |
| 33) 1,2-Dichloropropane-d6 | 9.27 | 67 | 254011 | 22.59 | ug/L | 0.00 |
| Spiked Amount | 25.000 | Range | 70 - 120 | Recovery | = | 90.36% |
| 37) Toluene-d8 | 10.32 | 98 | 742576 | 22.67 | ug/L | 0.00 |
| Spiked Amount | 25.000 | Range | 30 - 130 | Recovery | = | 90.68% |
| 38) trans-1,3-Dichloropropene- | 10.58 | 79 | 100007 | 19.30 | ug/L | 0.00 |
| Spiked Amount | 25.000 | Range | 30 - 135 | Recovery | = | 77.20% |
| 39) 2-Hexanone-d5 | 10.93 | 63 | 85702 | 36.27 | ug/L | 0.00 |
| Spiked Amount | 50.000 | Range | 20 - 135 | Recovery | = | 72.54% |
| 48) 1,1,2,2-Tetrachloroethane- | 12.69 | 84 | 185314 | 19.85 | ug/L | 0.00 |
| Spiked Amount | 25.000 | Range | 45 - 120 | Recovery | = | 79.40% |
| 61) 1,2-Dichlorobenzene-d4 | 13.85 | 152 | 260112 | 24.39 | ug/L | 0.00 |
| Spiked Amount | 25.000 | Range | 75 - 120 | Recovery | = | 97.56% |

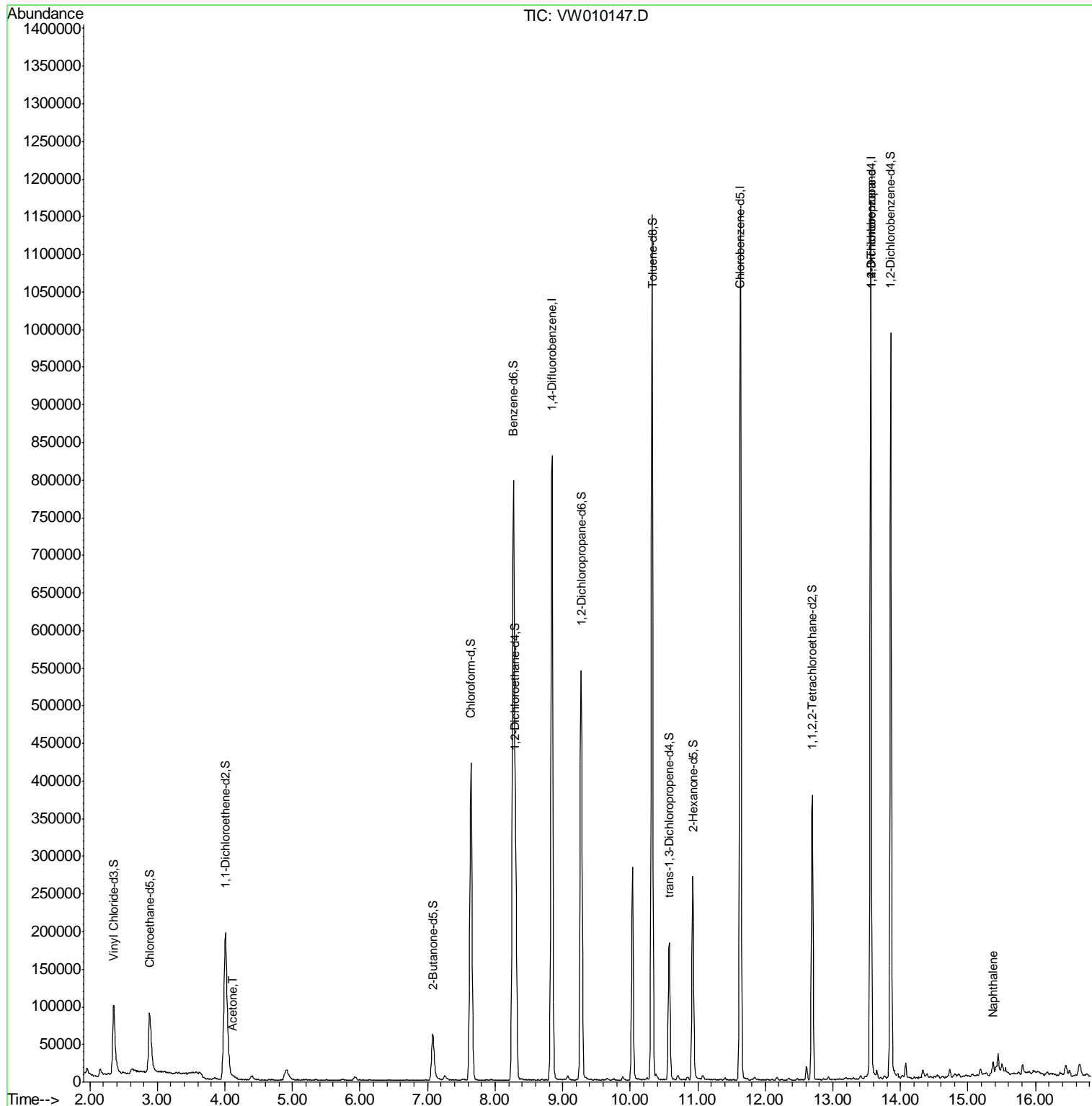
| Target Compounds | R.T. | QIon | Response | Conc | Units | Qvalue |
|----------------------------|-------|------|----------|-------|--------|--------|
| 13) Acetone | 4.12 | 43 | 3959 | 1.715 | ug/L | 72 |
| 59) 1,2,3-Trichloropropane | 13.56 | 75 | 35053 | 5.042 | ug/L | 91 |
| 69) Naphthalene | 15.37 | 128 | 16180 | 0.599 | ug/L # | 90 |

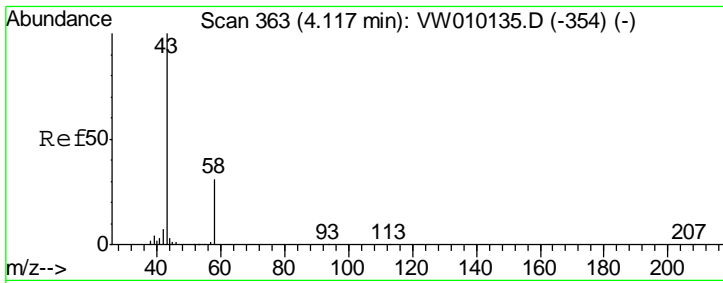
(#) = qualifier out of range (m) = manual integration (+) = signals summed

Data Path : Z:\VOASRV\HPCHEM1\MSVOA_W\DATA\VW042419\
 Data File : VW010147.D
 Acq On : 25 Apr 2019 17:37
 Operator : SY/VA
 Sample : K2481-21
 Misc : 5.09G/10ML/MSVOA_W/SOIL
 ALS Vial : 1 Sample Multiplier: 1

Instrument :
 MSVOA_W
 Client Sampled :
 GAHX4

Quant Time: Apr 26 01:08:50 2019
 Quant Method : Z:\VOASRV\HPCHEM1\MSVOA_W\METHOD\SOM2WLM042419S.M
 Quant Title : VOC Analysis
 QLast Update : Fri Apr 26 01:05:00 2019
 Response via : Initial Calibration

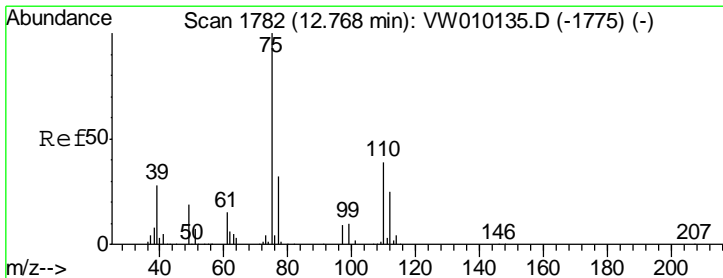
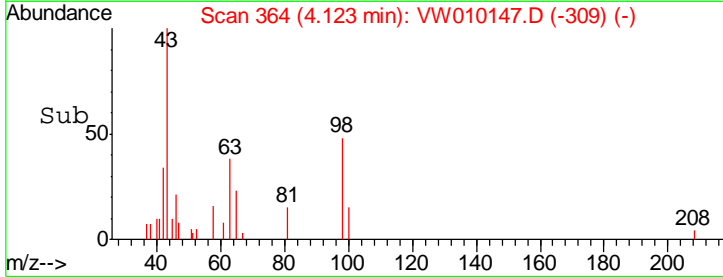
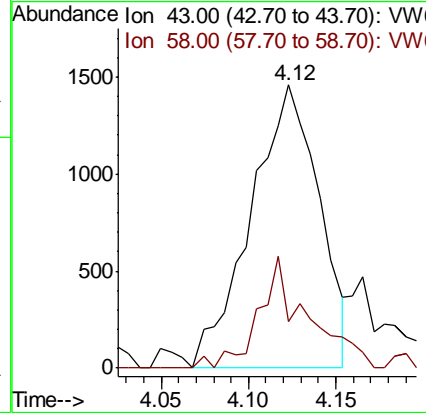
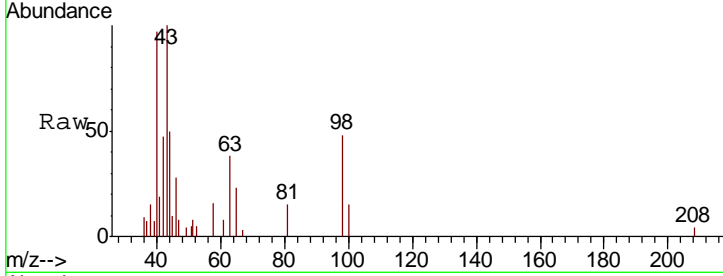




#13
 Acetone
 Concen: 1.715 ug/L
 RT: 4.12 min Scan# 364
 Delta R.T. 0.01 min
 Lab File: VW010147.D
 Acq: 25 Apr 2019 17:37

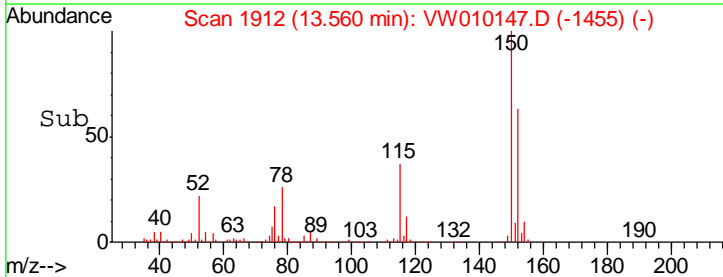
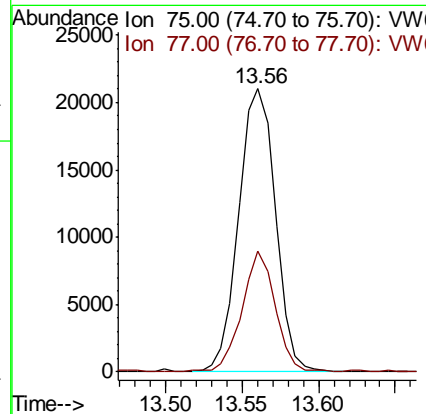
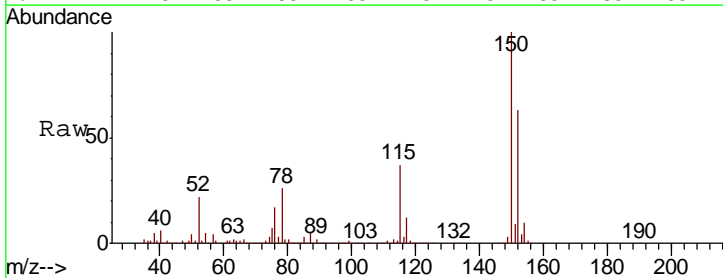
Instrument :
 MSVOA_W
 ClientSampled :
 GAHX4

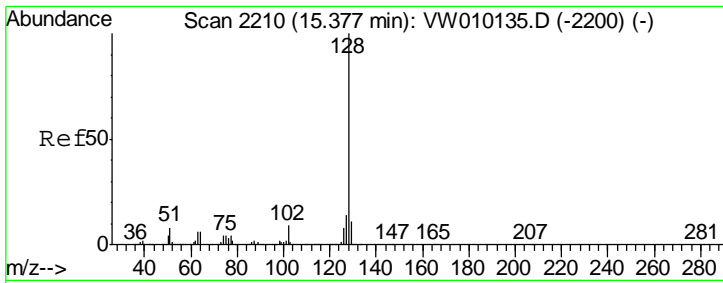
| Tgt Ion | Resp | Lower | Upper |
|---------|------|-------|-------|
| 43 | 100 | | |
| 58 | 14.1 | 0.0 | 58.2 |



#59
 1,2,3-Trichloropropane
 Concen: 5.042 ug/L
 RT: 13.56 min Scan# 1912
 Delta R.T. 0.79 min
 Lab File: VW010147.D
 Acq: 25 Apr 2019 17:37

| Tgt Ion | Resp | Lower | Upper |
|---------|------|-------|-------|
| 75 | 100 | | |
| 77 | 37.9 | 26.1 | 39.1 |





#69
 Naphthalene
 Concen: 0.599 ug/L
 RT: 15.37 min Scan# 2209
 Delta R.T. 0.00 min
 Lab File: VW010147.D
 Acq: 25 Apr 2019 17:37

Instrument : MSVOA_W
 ClientSampleId : GAHX4

| Tgt Ion | Resp | Lower | Upper |
|---------|-------|-------|-------|
| 128 | 16180 | | |
| 129 | 11.7 | 8.6 | 13.0 |
| 127 | 7.1 | 10.8 | 16.2# |

