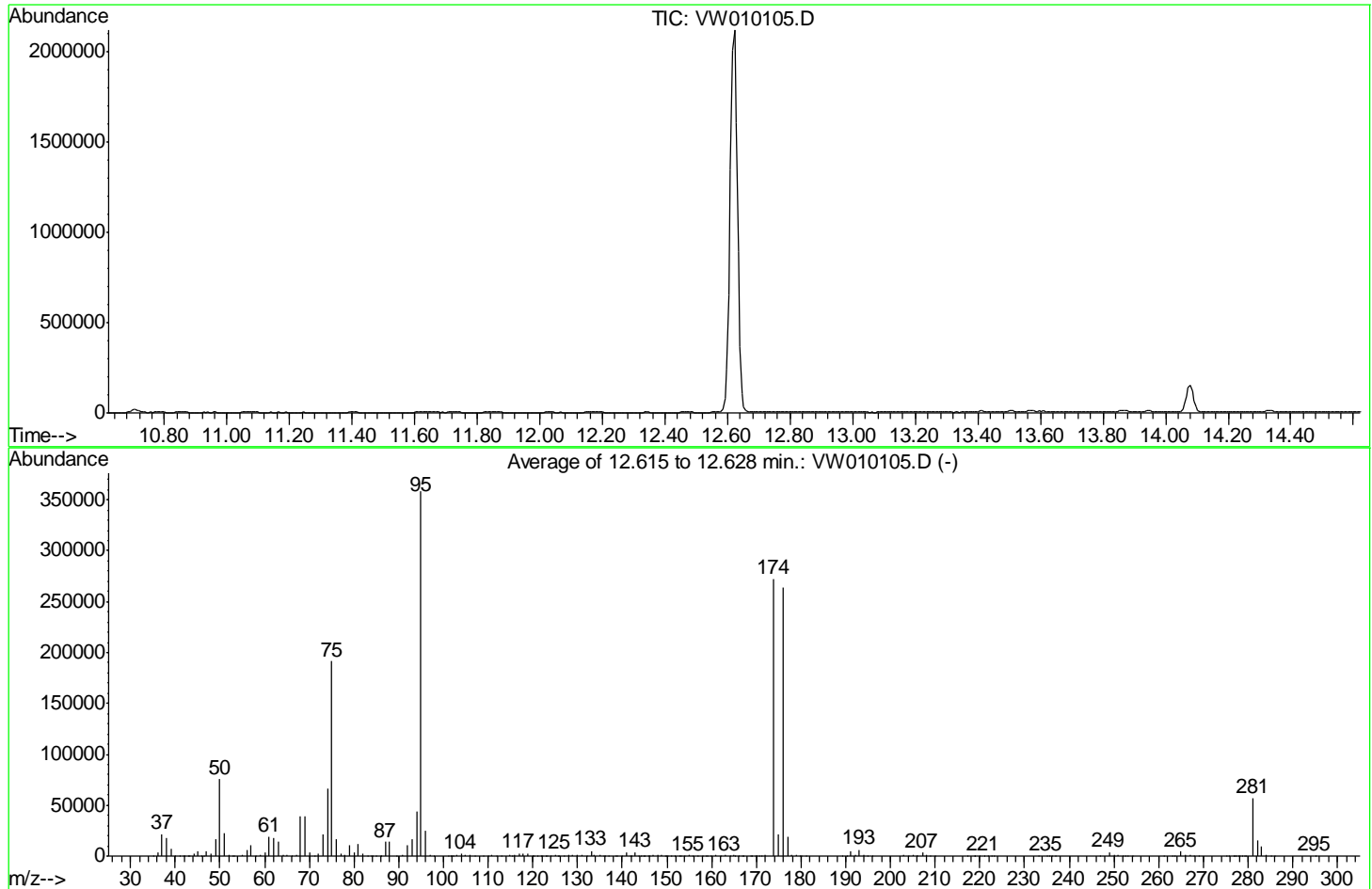


Data Path : Z:\voasrv\HPCHEM1\MSVOA_W\Data\VW042419\
 Data File : VW010105.D
 Acq On : 24 Apr 2019 08:44
 Operator : SY/VA
 Sample : BFB06
 Misc : 5.00G/10ML/MSVOA_W/SOIL
 ALS Vial : 1 Sample Multiplier: 1

Instrument :
 MSVOA_W
 ClientSampleId :
 BFB06

Integration File: LSCINT.P

Method : Z:\VOASRV\HPCHEM1\MSVOA_W\METHOD\SOM2WLM042419S.M
 Title : VOC Analysis
 Last Update : Fri Apr 26 01:05:00 2019



AutoFind: Scans 1757, 1758, 1759; Background Corrected with Scan 1749

Target Mass	Rel. to Mass	Lower Limit%	Upper Limit%	Rel. Abn%	Raw Abn	Result Pass/Fail
50	95	15	40	21.1	75605	PASS
75	95	30	80	53.4	191424	PASS
95	95	100	100	100.0	358293	PASS
96	95	5	9	6.8	24421	PASS
173	174	0.00	2	0.0	0	PASS
174	95	50	120	75.8	271637	PASS
175	174	5	9	7.7	21013	PASS
176	174	95	101	97.0	263573	PASS
177	176	5	9	7.2	18976	PASS

m/z	Abundance
38.40	183.0
39.00	61.0
40.10	1111.0
40.80	90.0
43.00	206.0
44.10	777.0
50.90	105.0
52.90	64.0
55.00	116.0
56.90	241.0
70.90	106.0
84.20	55.0
84.90	60.0
125.90	63.0
128.20	398.0
136.50	75.0
207.10	58.0

Instrument :
MSVOA_W
ClientSampleId :
BFB06

m/z	Abundance
35.10	57.0
36.00	3822.0
37.00	22512.0
38.10	20008.0
39.10	7938.0
40.00	1352.0
40.90	232.0
41.70	267.0
42.90	647.0
44.10	2569.0
45.10	5359.0
46.20	509.0
47.10	5146.0
48.00	2472.0
49.00	17688.0
50.00	81728.0
51.00	24680.0
52.00	1327.0
52.90	354.0
55.00	1511.0
56.00	6720.0
57.00	10438.0
58.00	522.0
59.00	1427.0
60.00	3425.0
61.00	21152.0
62.10	20928.0
63.10	15330.0
64.00	1463.0
65.00	1482.0
66.20	283.0
67.00	987.0
68.00	42200.0
69.00	43088.0
70.00	3606.0
71.00	247.0
72.10	1768.0
73.10	23800.0
74.00	71632.0
75.00	204608.0
76.10	18232.0
77.10	2216.0
77.80	1154.0
78.90	13116.0
80.00	3464.0
81.00	11886.0
82.00	2741.0
83.20	335.0
83.70	94.0
84.90	199.0
87.00	15843.0
88.00	14346.0
90.90	1350.0
92.00	11652.0
93.00	17696.0
94.00	47160.0
95.00	367872.0
96.00	26672.0
97.00	790.0
101.10	56.0
102.00	153.0
103.00	1675.0
103.90	2259.0
104.90	783.0
105.90	1640.0
106.90	450.0
109.00	57.0
110.00	522.0
110.90	599.0
112.00	670.0
113.00	400.0
115.00	996.0
116.00	1455.0
116.90	2829.0
117.90	2349.0
119.00	2940.0
119.80	184.0
120.10	171.0
121.10	212.0
121.90	234.0
122.90	233.0
123.80	237.0
125.00	1946.0
125.50	908.0
126.90	357.0
127.90	1555.0
128.90	828.0
129.90	1535.0
130.90	704.0
133.10	7636.0
133.70	1854.0
135.00	1561.0

Instrument :
MSVOA_W
ClientSampleId :
BFB06

136. 10	153. 0
136. 90	673. 0
138. 60	128. 0
139. 90	319. 0
140. 90	3400. 0
141. 80	523. 0
142. 90	3932. 0
144. 10	342. 0
145. 00	794. 0
145. 90	545. 0
147. 00	859. 0
147. 90	1107. 0
148. 90	604. 0
149. 60	222. 0
150. 10	406. 0
150. 90	110. 0
151. 90	217. 0
153. 00	388. 0
153. 90	197. 0
154. 80	812. 0
155. 80	87. 0
156. 80	399. 0
158. 80	536. 0
159. 70	60. 0
160. 90	902. 0
161. 90	233. 0
163. 00	1077. 0
164. 00	267. 0
165. 00	805. 0
166. 00	82. 0
166. 80	121. 0
168. 70	80. 0
170. 00	230. 0
170. 70	284. 0
171. 90	2316. 0
173. 90	257344. 0
175. 00	20088. 0
176. 00	248640. 0
176. 90	18848. 0
177. 90	1281. 0
179. 00	1790. 0
179. 70	219. 0
180. 10	173. 0
181. 10	215. 0
189. 00	501. 0
190. 20	577. 0
191. 00	6998. 0
192. 00	1723. 0
193. 00	8824. 0
194. 00	1684. 0
194. 90	741. 0
196. 00	138. 0
203. 00	1009. 0
204. 00	142. 0
205. 00	1595. 0
205. 80	282. 0
207. 10	4531. 0
208. 00	913. 0
208. 90	720. 0
210. 00	74. 0
218. 70	135. 0
219. 10	123. 0
219. 80	230. 0
220. 90	400. 0
221. 90	67. 0
222. 70	137. 0
233. 20	123. 0
234. 90	609. 0
236. 00	206. 0
237. 00	111. 0
246. 80	178. 0
249. 00	5662. 0
250. 00	970. 0
251. 00	2167. 0
252. 00	721. 0
253. 10	329. 0
254. 10	153. 0
261. 10	58. 0
263. 00	121. 0
265. 00	6400. 0
266. 00	1394. 0
267. 10	2022. 0
268. 00	450. 0
268. 90	222. 0
275. 00	62. 0
275. 70	68. 0
276. 70	165. 0
277. 10	184. 0
277. 80	266. 0
278. 50	538. 0
279. 40	682. 0
281. 10	73656. 0
282. 10	21432. 0
283. 00	13269. 0
284. 00	2206. 0
285. 10	724. 0

Instrument :
MSVOA_W
ClientSampleId :
BFB06

286.00
295.00

70.0
52.0

Instrument :
MSVOA_W
ClientSampleId :
BFB06

m/z	Abundance
36.00	3991.0
37.10	24528.0
38.10	18824.0
39.10	8575.0
40.00	1469.0
42.10	94.0
43.10	438.0
44.10	2952.0
45.10	4659.0
45.90	289.0
47.10	4781.0
48.00	3312.0
49.00	17848.0
50.00	83776.0
51.10	25440.0
52.00	981.0
53.10	182.0
55.00	1421.0
56.00	6839.0
57.00	12468.0
58.00	519.0
59.00	1026.0
60.00	4199.0
61.00	20088.0
62.00	19896.0
63.00	16283.0
64.10	1464.0
65.10	799.0
66.00	212.0
67.10	1230.0
68.00	40888.0
69.00	44072.0
70.10	3358.0
71.20	259.0
72.00	2589.0
73.10	23432.0
74.00	73280.0
75.00	212032.0
76.00	18840.0
77.10	2570.0
77.80	1359.0
78.90	11664.0
79.90	3561.0
81.00	14152.0
82.00	2511.0
83.00	411.0
84.10	161.0
84.90	67.0
85.90	655.0
87.00	15005.0
87.90	14577.0
90.90	1470.0
92.00	11407.0
93.00	18320.0
94.00	48120.0
95.00	402752.0
96.10	27048.0
97.00	803.0
97.90	53.0
101.70	108.0
102.20	223.0
102.90	805.0
103.90	2053.0
104.90	857.0
106.00	1791.0
107.00	322.0
110.00	459.0
110.90	907.0
111.90	714.0
113.00	422.0
115.00	676.0
115.90	1501.0
117.00	2377.0
117.90	1972.0
118.80	2907.0
119.90	156.0
121.00	261.0
121.70	114.0
122.80	82.0
123.10	87.0
123.80	224.0
125.00	1412.0
125.90	581.0
128.00	1533.0
128.80	1067.0
129.80	1328.0
130.90	963.0
132.00	223.0
133.00	4995.0
134.80	849.0
135.80	128.0
136.90	665.0

Instrument :
MSVOA_W
ClientSampleId :
BFB06

138.90	114.0
140.00	428.0
140.90	3958.0
142.00	591.0
143.00	4465.0
144.10	247.0
145.10	400.0
145.80	630.0
147.00	1001.0
147.90	995.0
148.80	787.0
149.80	482.0
151.00	89.0
151.80	258.0
152.70	237.0
153.10	287.0
153.90	413.0
154.90	909.0
156.90	797.0
159.00	444.0
159.80	113.0
160.90	587.0
162.00	244.0
163.00	1013.0
164.10	449.0
164.80	888.0
166.10	102.0
166.90	89.0
168.70	108.0
169.10	115.0
169.70	184.0
171.00	480.0
172.00	2185.0
174.00	304128.0
175.00	23632.0
176.00	298048.0
177.00	20912.0
177.90	1166.0
179.10	974.0
180.00	248.0
181.20	67.0
189.10	595.0
191.00	4493.0
192.10	1120.0
193.00	6379.0
194.00	1199.0
195.00	589.0
196.00	141.0
203.00	728.0
204.00	159.0
205.10	1138.0
205.80	450.0
207.10	4181.0
208.00	785.0
208.90	415.0
209.80	117.0
218.90	62.0
220.80	208.0
221.90	118.0
223.00	67.0
235.00	602.0
236.00	77.0
236.80	163.0
246.80	132.0
249.00	4381.0
250.00	1267.0
250.90	1499.0
252.00	402.0
253.00	137.0
263.00	106.0
263.60	106.0
265.00	4814.0
266.00	1385.0
267.00	1391.0
267.80	173.0
269.00	121.0
275.00	116.0
275.60	130.0
277.00	269.0
278.00	215.0
279.10	583.0
281.10	60640.0
282.10	15968.0
283.10	10255.0
284.10	2155.0
285.00	448.0
286.00	80.0
295.00	71.0

Instrument :
MSVOA_W
ClientSampleId :
BFB06

m/z	Abundance
36.10	3111.0
37.10	17976.0
38.10	13328.0
39.10	5320.0
40.00	1351.0
41.10	218.0
42.20	95.0
43.10	393.0
44.10	2433.0
45.00	3999.0
46.30	327.0
47.00	3950.0
47.90	1959.0
49.10	14380.0
50.00	61312.0
51.10	18656.0
52.10	856.0
53.10	154.0
55.10	753.0
56.00	4695.0
57.00	9589.0
57.90	457.0
58.90	331.0
60.00	3606.0
61.00	15588.0
62.00	14177.0
63.00	11429.0
64.00	1181.0
65.10	757.0
66.10	208.0
67.00	789.0
68.10	33520.0
69.00	31112.0
70.00	2367.0
71.10	228.0
72.00	1643.0
73.00	16424.0
74.00	54768.0
75.00	157632.0
76.00	11933.0
77.10	1941.0
77.90	1381.0
79.00	8809.0
80.00	2970.0
80.90	9060.0
82.00	2454.0
83.00	361.0
84.10	162.0
84.90	86.0
86.10	392.0
87.00	11577.0
88.00	12516.0
89.60	84.0
90.90	1312.0
92.00	8982.0
93.00	13995.0
94.10	36368.0
95.00	304256.0
96.10	19544.0
97.00	552.0
98.00	59.0
101.60	63.0
102.90	551.0
104.00	1535.0
104.90	559.0
105.90	1668.0
107.00	500.0
110.10	325.0
111.00	466.0
111.90	266.0
112.90	391.0
114.80	594.0
115.30	217.0
115.90	1282.0
116.90	2292.0
117.90	1295.0
119.00	1592.0
120.90	190.0
121.80	81.0
122.10	84.0
123.10	116.0
123.90	209.0
125.10	747.0
125.80	413.0
126.90	227.0
128.00	1363.0
128.90	710.0
129.90	1172.0
131.00	713.0
132.00	85.0
133.10	2317.0
133.70	618.0

Instrument :
MSVOA_W
ClientSampleId :
BFB06

134.80	790.0
135.80	126.0
136.90	544.0
138.90	54.0
140.10	232.0
140.90	3525.0
141.90	474.0
142.90	3400.0
143.60	166.0
144.00	116.0
144.80	665.0
145.70	425.0
146.10	321.0
146.80	566.0
147.90	982.0
148.90	565.0
149.90	362.0
151.00	77.0
151.80	222.0
152.90	194.0
153.80	273.0
154.90	775.0
155.80	245.0
157.00	573.0
157.80	55.0
158.70	357.0
158.90	352.0
161.00	483.0
162.90	396.0
164.10	77.0
164.70	362.0
165.30	148.0
166.00	117.0
167.10	95.0
169.10	126.0
169.70	87.0
171.00	388.0
174.00	253440.0
175.00	19320.0
175.90	244032.0
177.00	17168.0
177.90	459.0
178.90	831.0
180.00	148.0
189.10	302.0
190.00	167.0
191.00	2305.0
192.10	677.0
193.00	2570.0
194.10	459.0
194.80	331.0
196.00	113.0
203.00	290.0
204.00	50.0
205.00	685.0
206.00	394.0
207.00	1869.0
208.10	434.0
209.00	303.0
209.80	62.0
217.10	59.0
218.90	186.0
220.70	59.0
235.00	371.0
235.60	137.0
236.70	53.0
248.90	1621.0
250.00	628.0
251.00	660.0
252.00	234.0
252.60	57.0
263.10	51.0
263.60	66.0
264.90	2243.0
265.90	593.0
267.00	819.0
269.00	101.0
276.70	54.0
277.30	128.0
278.60	230.0
281.10	34856.0
282.10	7738.0
283.00	6111.0
284.10	1064.0
285.20	303.0
285.90	71.0
295.10	54.0

Instrument :
MSVOA_W
ClientSampleId :
BFB06