

Data Path : Z:\VOASRV\HPCHEM1\MSVOA W\DATA\VW042420\
 Data File : VW015340.D
 Acq On : 24 Apr 2020 13:55
 Operator : SY/VA
 Sample : L2118-01
 Misc : 7.66G/5ML/MSVOA W/SOIL
 ALS Vial : 9 Sample Multiplier: 1

Instrument :
 MSVOA_W
 ClientSampleId :
 EO-02-042320

Quant Time: Apr 25 07:14:56 2020
 Quant Method : Z:\VOASRV\HPCHEM1\MSVOA_W\METHOD\82W042020S.M
 Quant Title : SW846 8260
 QLast Update : Tue Apr 21 06:39:58 2020
 Response via : Initial Calibration

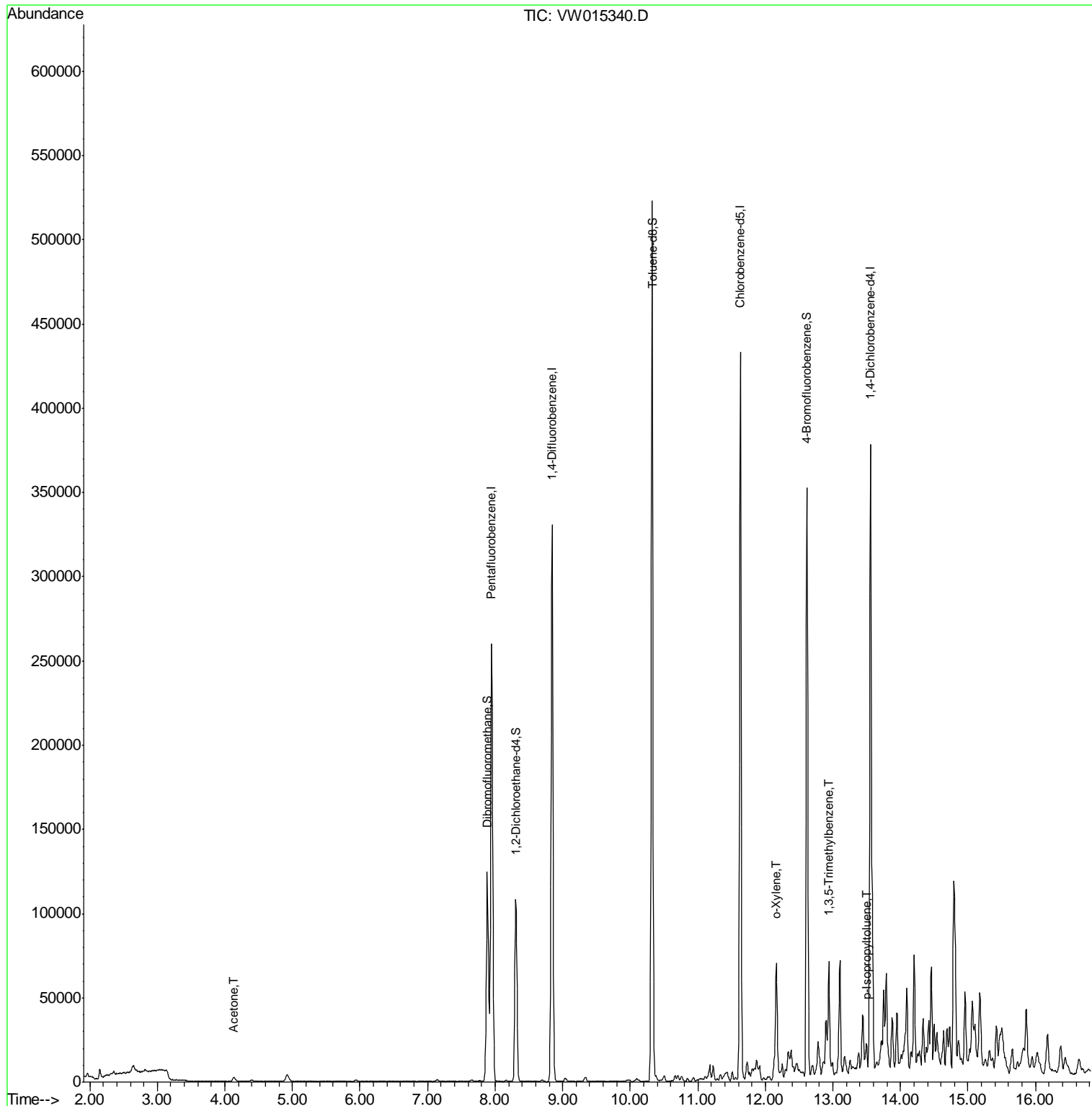
Internal Standards	R.T.	QIon	Response	Conc	Units	Dev(Min)
1) Pentafluorobenzene	7.95	168	218909	50.00	ug/l	0.00
34) 1,4-Difluorobenzene	8.84	114	297768	50.00	ug/l	0.00
63) Chlorobenzene-d5	11.63	117	255894	50.00	ug/l	0.00
72) 1,4-Dichlorobenzene-d4	13.55	152	104845	50.00	ug/l	0.00
System Monitoring Compounds						
33) 1,2-Dichloroethane-d4	8.31	65	84547	47.23	ug/l	0.00
Spiked Amount	50.000		Recovery	=	94.46%	
35) Dibromofluoromethane	7.88	113	85947	52.11	ug/l	0.00
Spiked Amount	50.000		Recovery	=	104.22%	
50) Toluene-d8	10.32	98	351622	50.68	ug/l	0.00
Spiked Amount	50.000		Recovery	=	101.36%	
62) 4-Bromofluorobenzene	12.62	95	108715	41.07	ug/l	0.00
Spiked Amount	50.000		Recovery	=	82.14%	
Target Compounds						
16) Acetone	4.14	43	5063	16.193	ug/l	95
69) o-Xylene	12.16	106	17595	5.136	ug/l	99
80) 1,3,5-Trimethylbenzene	12.94	105	27211	4.345	ug/l	100
86) p-Isopropyltoluene	13.49	119	8903	1.268	ug/l	97

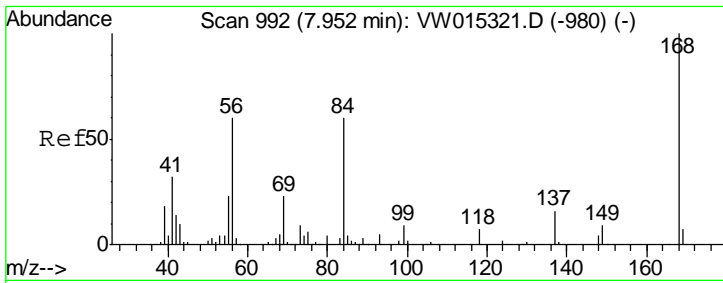
(#) = qualifier out of range (m) = manual integration (+) = signals summed

Data Path : Z:\VOASRV\HPCHEM1\MSVOA W\DATA\VW042420\
 Data File : VW015340.D
 Acq On : 24 Apr 2020 13:55
 Operator : SY/VA
 Sample : L2118-01
 Misc : 7.66G/5ML/MSVOA W/SOIL
 ALS Vial : 9 Sample Multiplier: 1

Instrument :
 MSVOA_W
 ClientSampleId :
 EO-02-042320

Quant Time: Apr 25 07:14:56 2020
 Quant Method : Z:\VOASRV\HPCHEM1\MSVOA_W\METHOD\82W042020S.M
 Quant Title : SW846 8260
 QLast Update : Tue Apr 21 06:39:58 2020
 Response via : Initial Calibration

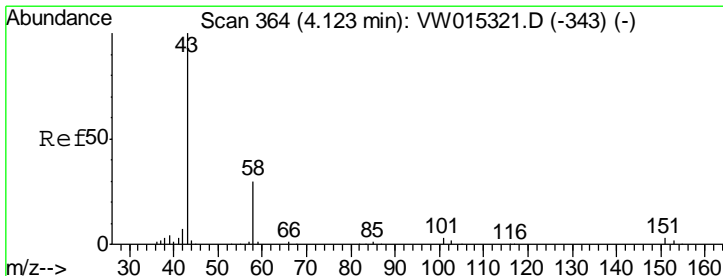
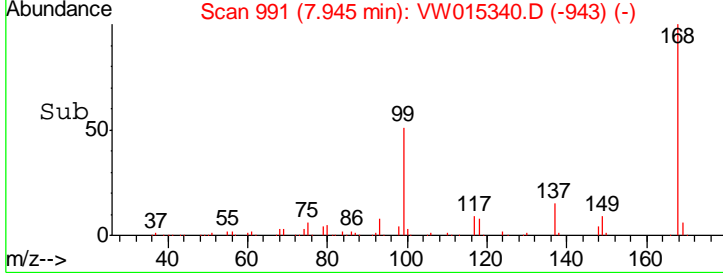
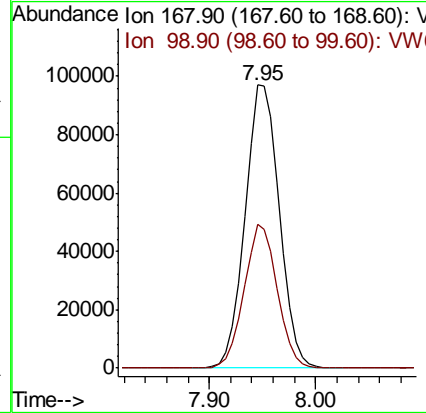
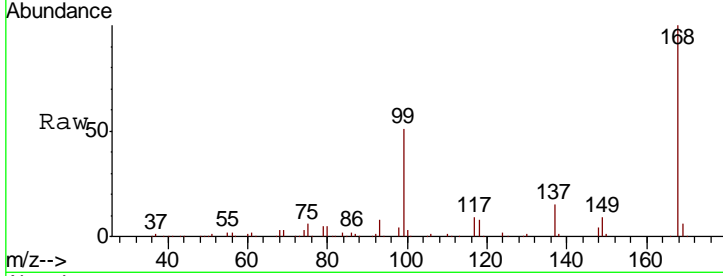




#1
 Pentafluorobenzene
 Concen: 50.000 ug/l
 RT: 7.95 min Scan# 991
 Delta R.T. -0.01 min
 Lab File: VW015340.D
 Acq: 24 Apr 2020 13:55

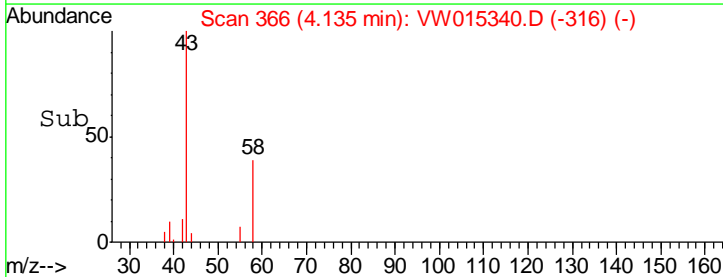
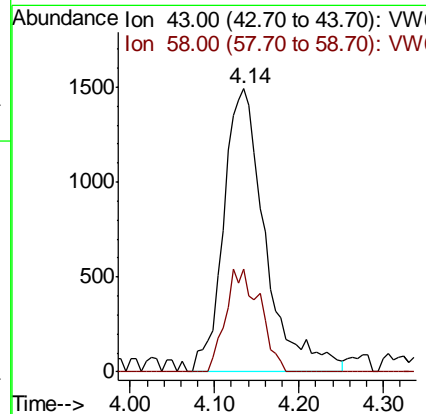
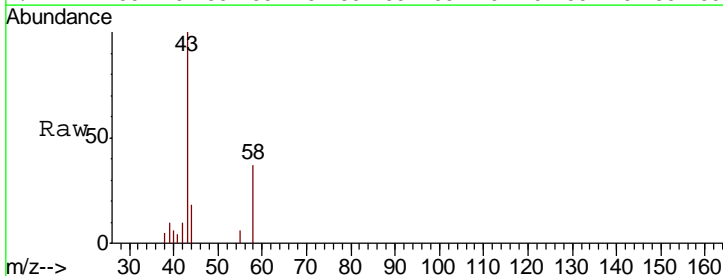
Instrument :
 MSVOA_W
 ClientSampled :
 EO-02-042320

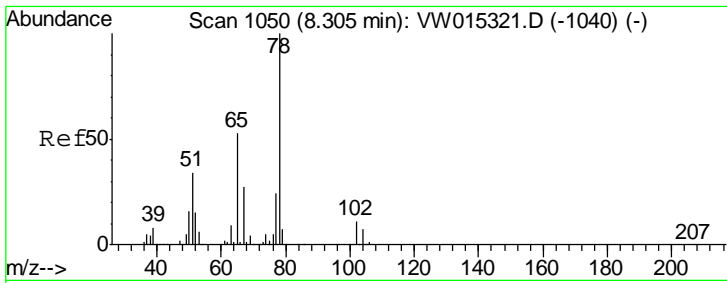
Tgt Ion: 168 Resp: 218909
 Ion Ratio Lower Upper
 168 100
 99 50.7 48.5 72.7



#16
 Acetone
 Concen: 16.193 ug/l
 RT: 4.14 min Scan# 366
 Delta R.T. 0.01 min
 Lab File: VW015340.D
 Acq: 24 Apr 2020 13:55

Tgt Ion: 43 Resp: 5063
 Ion Ratio Lower Upper
 43 100
 58 36.6 27.0 40.4

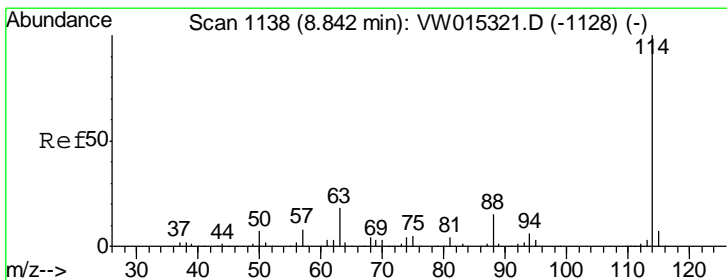
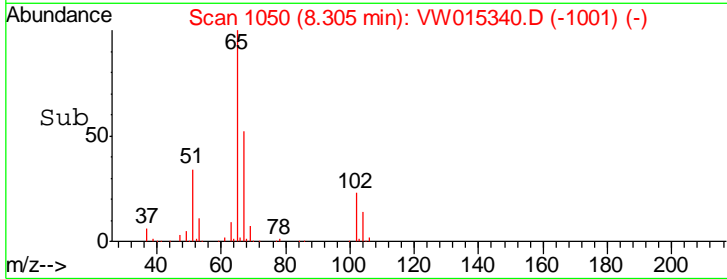
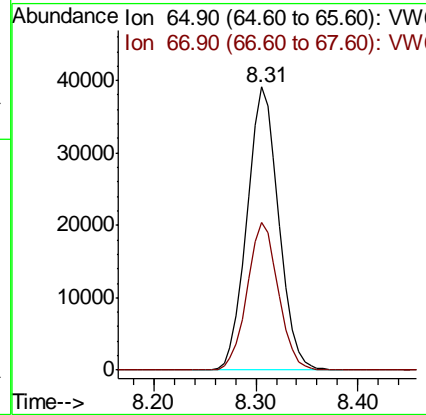
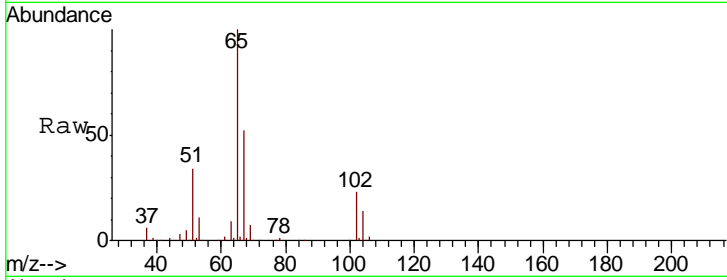




#33
 1,2-Dichloroethane-d4
 Concen: 47.230 ug/l
 RT: 8.31 min Scan# 1050
 Delta R.T. 0.00 min
 Lab File: VW015340.D
 Acq: 24 Apr 2020 13:55

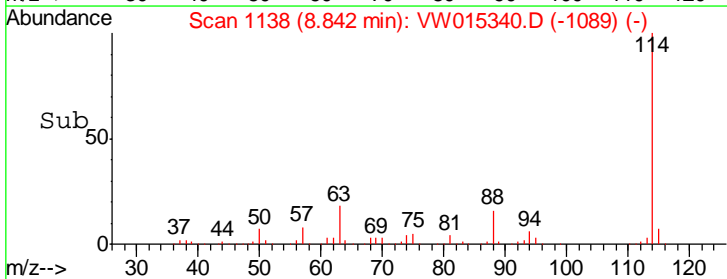
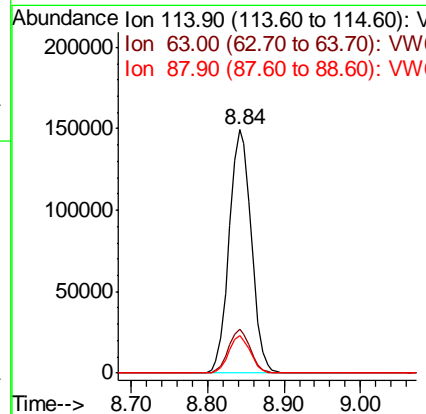
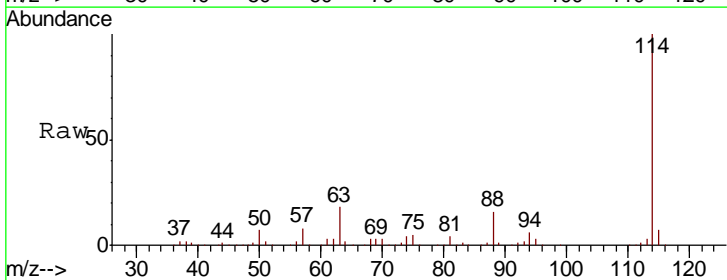
Instrument :
 MSVOA_W
 ClientSampled :
 EO-02-042320

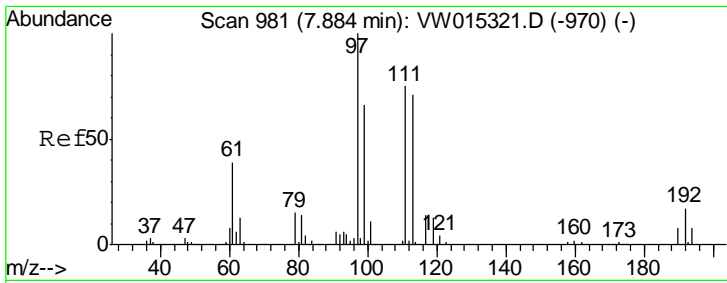
Tgt Ion: 65 Resp: 84547
 Ion Ratio Lower Upper
 65 100
 67 51.3 0.0 107.0



#34
 1,4-Difluorobenzene
 Concen: 50.000 ug/l
 RT: 8.84 min Scan# 1138
 Delta R.T. 0.00 min
 Lab File: VW015340.D
 Acq: 24 Apr 2020 13:55

Tgt Ion: 114 Resp: 297768
 Ion Ratio Lower Upper
 114 100
 63 18.0 0.0 39.8
 88 15.6 0.0 30.2

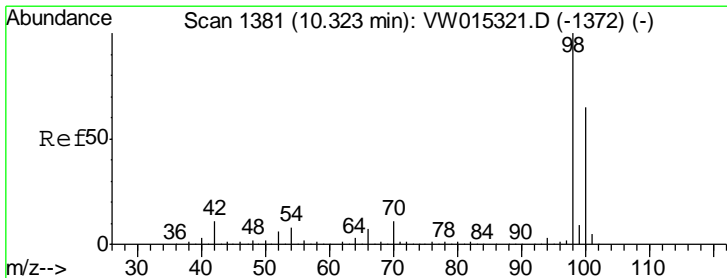
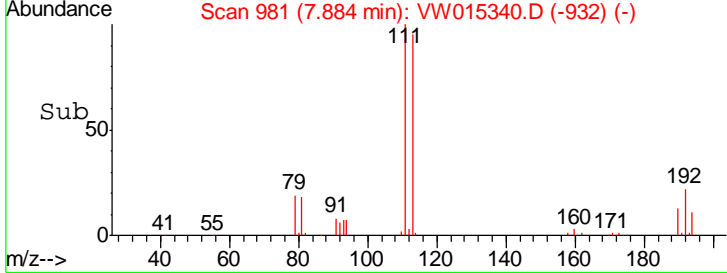
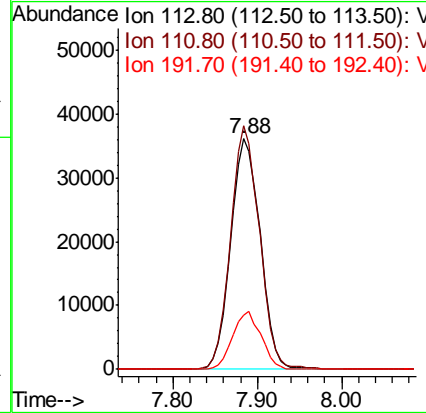
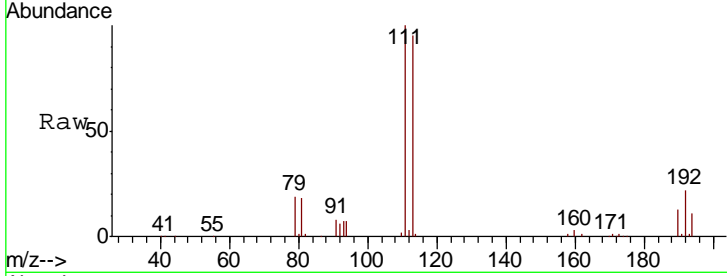




#35
 Dibromofluoromethane
 Concen: 52.108 ug/l
 RT: 7.88 min Scan# 981
 Delta R.T. 0.00 min
 Lab File: VW015340.D
 Acq: 24 Apr 2020 13:55

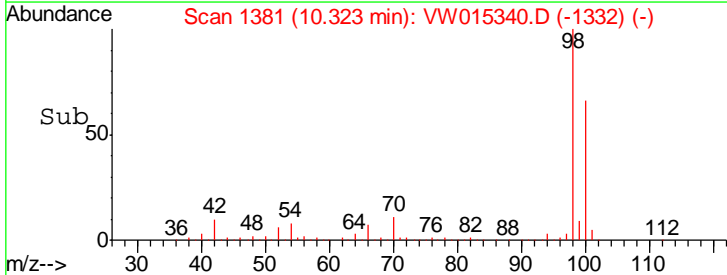
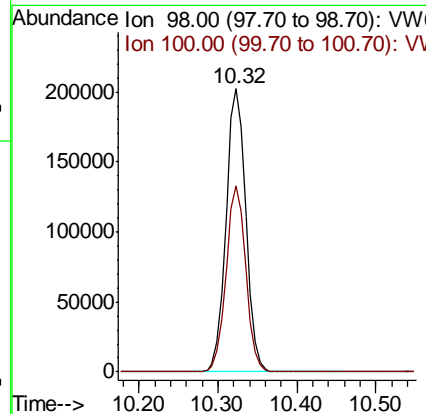
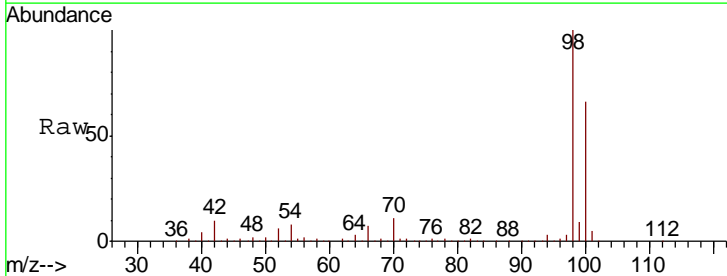
Instrument :
 MSVOA_W
 ClientSampled :
 EO-02-042320

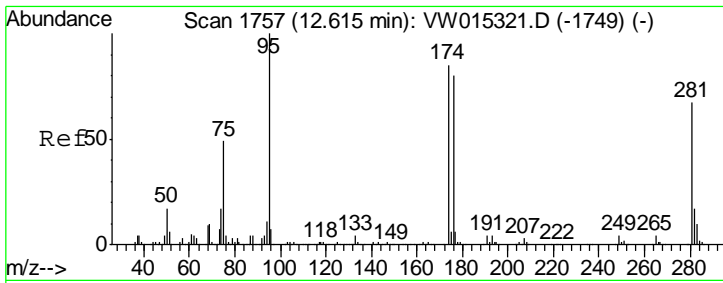
Tgt Ion	Resp	Lower	Upper
113	100		
111	103.0	83.0	124.4
192	24.3	15.1	22.7#



#50
 Toluene-d8
 Concen: 50.677 ug/l
 RT: 10.32 min Scan# 1381
 Delta R.T. 0.00 min
 Lab File: VW015340.D
 Acq: 24 Apr 2020 13:55

Tgt Ion	Resp	Lower	Upper
98	100		
100	65.3	52.9	79.3

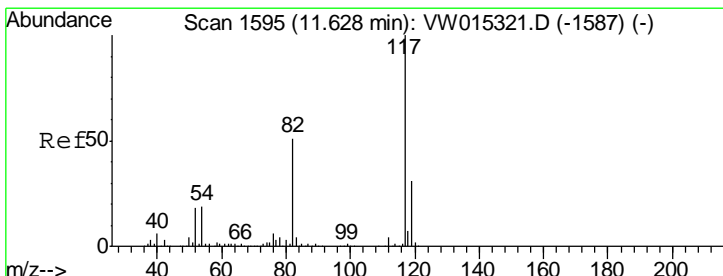
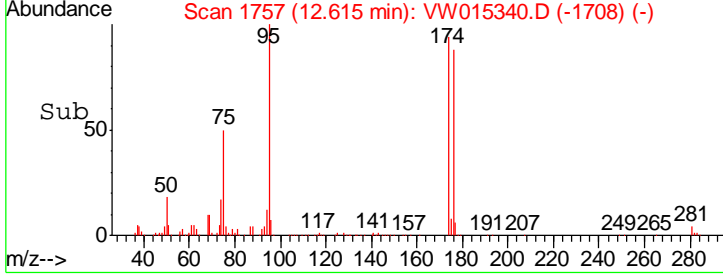
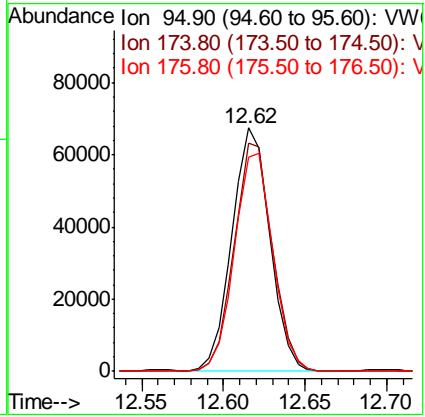
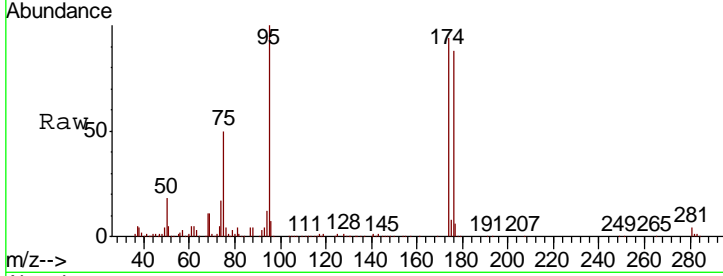




#62
 4-Bromofluorobenzene
 Concen: 41.065 ug/l
 RT: 12.62 min Scan# 1757
 Delta R.T. 0.00 min
 Lab File: VW015340.D
 Acq: 24 Apr 2020 13:55

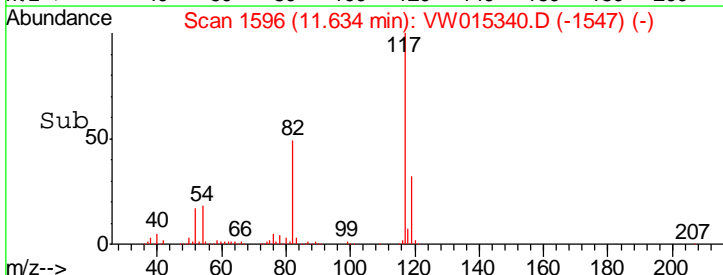
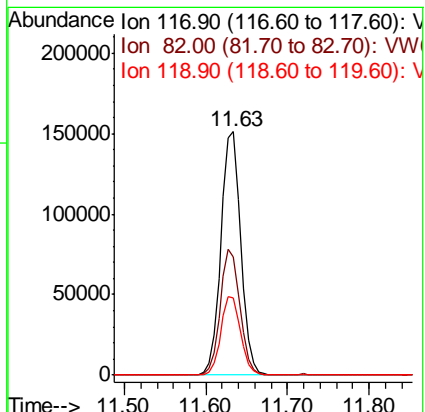
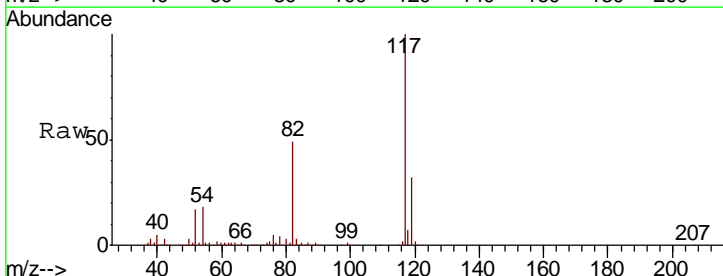
Instrument : MSVOA_W
 ClientSampled : EO-02-042320

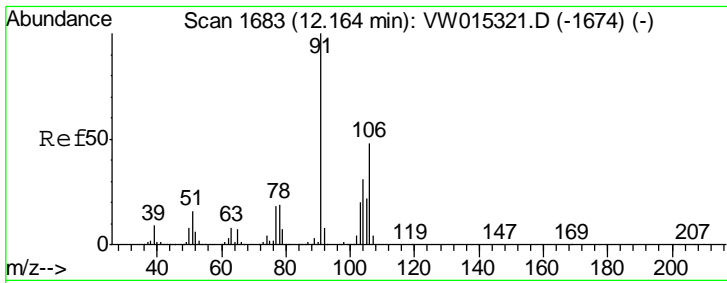
Tgt Ion	Resp	Lower	Upper
95	108715		
174	95.4	0.0	144.4
176	91.6	0.0	140.6



#63
 Chlorobenzene-d5
 Concen: 50.000 ug/l
 RT: 11.63 min Scan# 1596
 Delta R.T. 0.00 min
 Lab File: VW015340.D
 Acq: 24 Apr 2020 13:55

Tgt Ion	Resp	Lower	Upper
117	255894		
82	48.5	44.1	66.1
119	31.8	24.9	37.3

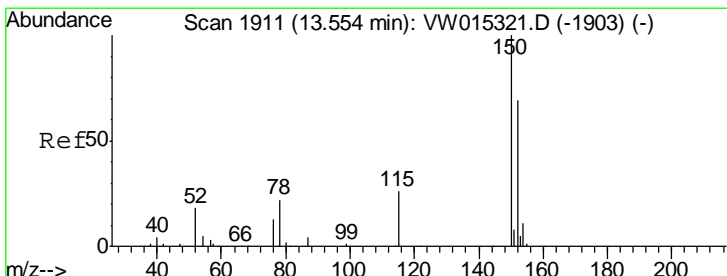
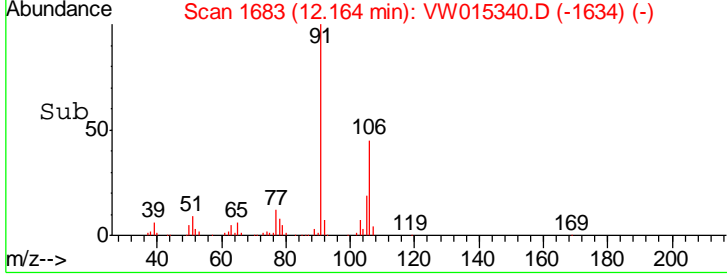
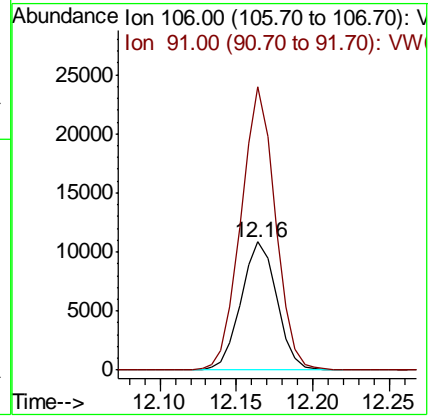
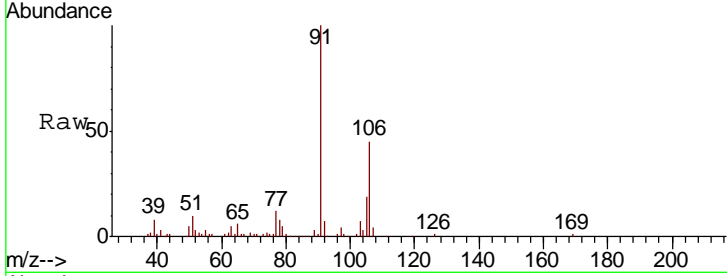




#69
 o-Xylene
 Concen: 5.136 ug/l
 RT: 12.16 min Scan# 1683
 Delta R.T. 0.00 min
 Lab File: VW015340.D
 Acq: 24 Apr 2020 13:55

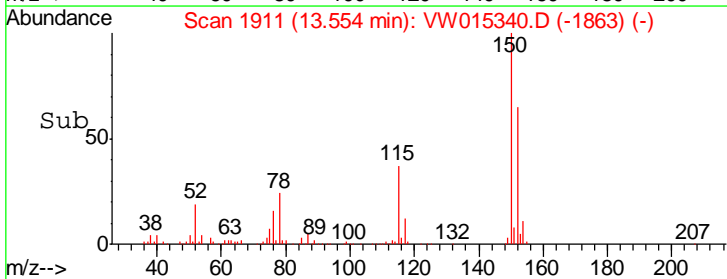
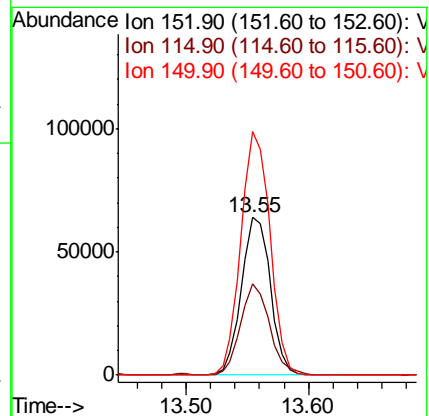
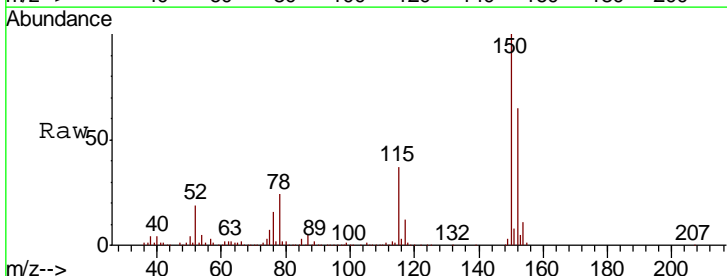
Instrument : MSVOA_W
 ClientSampled : EO-02-042320

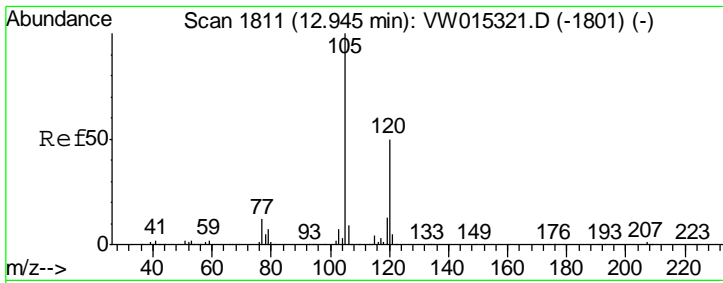
Tgt Ion	Resp	Lower	Upper
106	17595		
91	213.0	105.7	317.1



#72
 1,4-Dichlorobenzene-d4
 Concen: 50.000 ug/l
 RT: 13.55 min Scan# 1911
 Delta R.T. -0.01 min
 Lab File: VW015340.D
 Acq: 24 Apr 2020 13:55

Tgt Ion	Resp	Lower	Upper
152	104845		
115	58.3	31.3	93.9
150	155.9	0.0	343.4

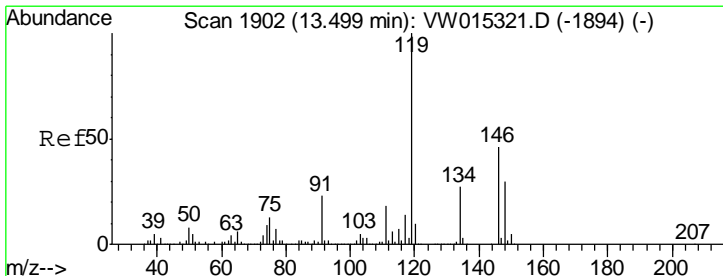
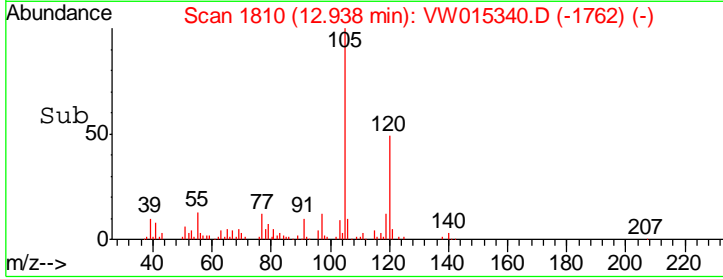
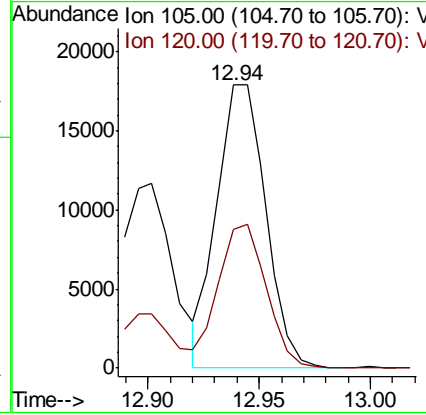
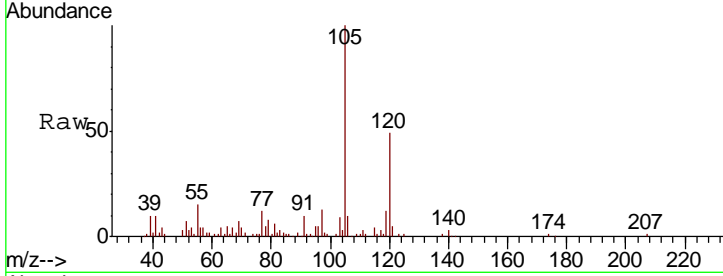




#80
 1,3,5-Trimethylbenzene
 Concen: 4.345 ug/l
 RT: 12.94 min Scan# 1810
 Delta R.T. -0.01 min
 Lab File: VW015340.D
 Acq: 24 Apr 2020 13:55

Instrument :
 MSVOA_W
 ClientSampled :
 EO-02-042320

Tgt Ion	Resp	Lower	Upper
105	27211		
120	50.1	24.9	74.8



#86
 p-Isopropyltoluene
 Concen: 1.268 ug/l
 RT: 13.49 min Scan# 1901
 Delta R.T. -0.01 min
 Lab File: VW015340.D
 Acq: 24 Apr 2020 13:55

Tgt Ion	Resp	Lower	Upper
119	8903		
134	27.7	13.3	39.9
91	22.5	12.0	36.1

